

Agenda Item 24-1131 (Jenna Dinkel)

Resolution approving the partial vacation of the public street right-of-way on Chestnut Place.

General Location

Council District 2, east of Wisconsin Highway 16, Adjacent to 3102 and 3130 Chestnut Place and 2830 and 2841 Darling Court as depicted on the attached map.

Background Information

The applicant is requesting a partial vacation of Chestnut Place of approximately 43,506 square feet. The partial vacation was applied for by the owner of 3102 Chestnut Place, the property to the southwest of the vacation, for private development. The additional portions of Chestnut Place requested to be vacated are adjacent to 3130 Chestnut Place, 2830 Darling Court and 2841 Darling Court. All property owners have confirmed with staff they are aware and in favor of the partial vacation.

The current width of Chestnut Place is 150 feet. The recommended width from Engineering staff to maintain a two-lane road, parking, boulevards and sidewalk is 80 feet. This partial vacation will not inhibit public needs as the existing width is determined to be surplus.

Recommendation of Other Boards and Commissions.

The Board of Public Works approved this resolution on August 19, 2024.

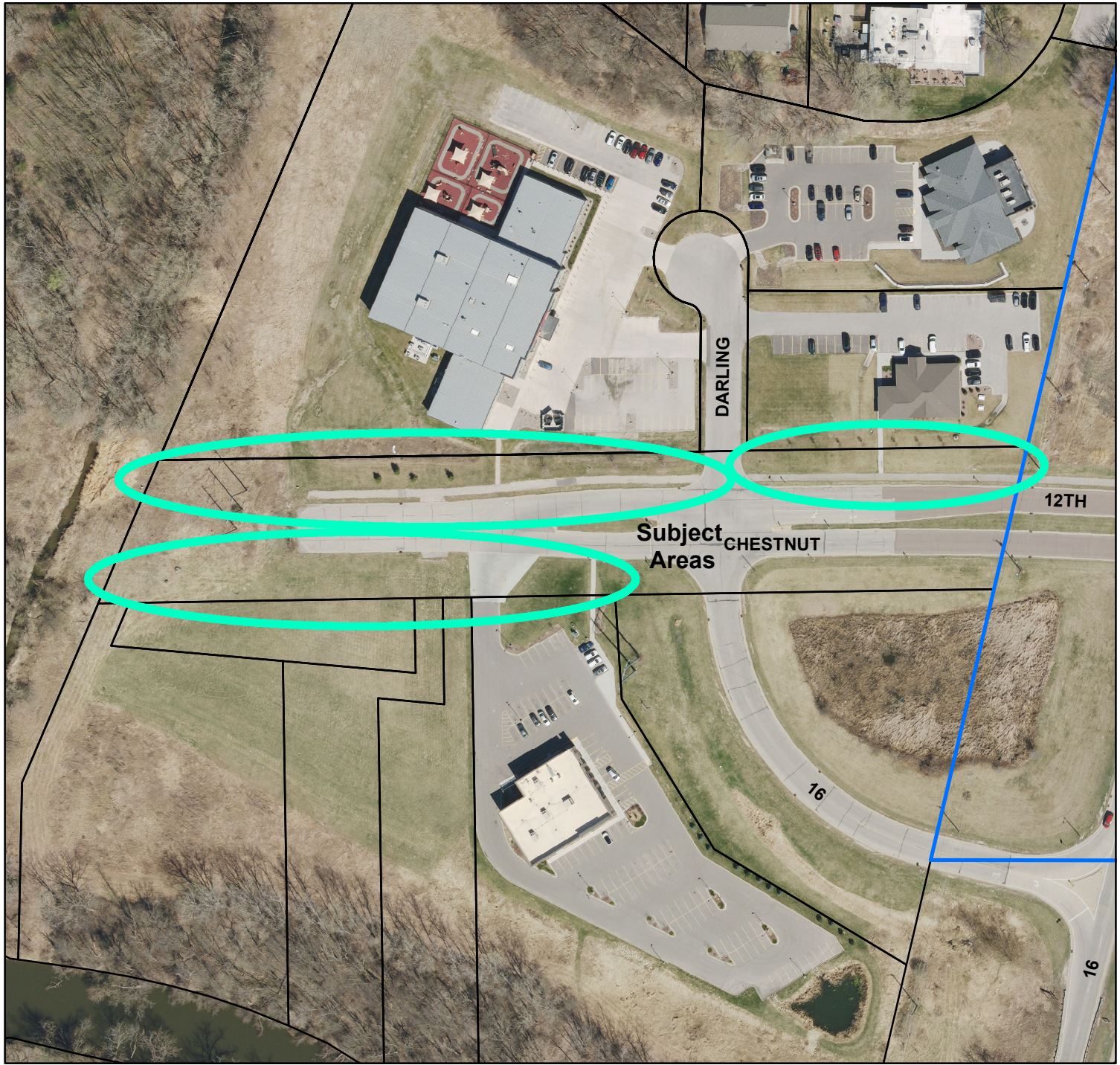
Consistency with Adopted Comprehensive Plan

This vacation will add more land for private use and development while still allowing necessary and standard space for public amenities which is consistent with the Comprehensive Plan.

Staff Recommendation

Approval - Staff recommends approval.

Routing F&P 11.7.2024



BASIC ZONING DISTRICTS

	R1 - SINGLE FAMILY
	R2 - RESIDENCE
	WR - WASHBURN RES
	R3 - SPECIAL RESIDENCE
	R4 - LOW DENSITY MULTI
	R5 - MULTIPLE DWELLING
	R6 - SPECIAL MULTIPLE
	PD- PLANNED DEVELOP
	TND - TRAD NEIGH DEV.
	C1 - LOCAL BUSINESS
	C2 - COMMERCIAL
	C3 - COMMUNITY BUSINESS
	M1 - LIGHT INDUSTRIAL
	M2 - HEAVY INDUSTRIAL
	PS - PUBLIC & SEMI-PUBLIC
	PL - PARKING LOT
	UT - PUBLIC UTILITY
	CON - CONSERVANCY
	FW - FLOODWAY
	A1 - AGRICULTURAL
	EA - EXCLUSIVE AG
	City Limits
	SUBJECT PROPERTY



