

EAST WARD COMMERCE CENTER

PDD SUBMITTAL

LA CROSSE, WISCONSIN

ISG PROJECT # 20-24527



LEGEND

EXISTING	
---	CITY LIMITS
---	SECTION LINE
---	QUARTER SECTION LINE
---	RIGHT OF WAY LINE
---	PROPERTY / LOTLINE
---	EASEMENT LINE
---	ACCESS CONTROL
---	WATER EDGE
---	WETLAND BOUNDARY
---	WETLAND / MARSH
---	FENCE LINE
---	CULVERT
---	STORM SEWER
---	SANITARY SEWER
---	SANITARY SEWER FORCEMAIN
---	WATER
---	GAS
---	OVERHEAD ELECTRIC
---	UNDERGROUND ELECTRIC
---	UNDERGROUND TELEPHONE
---	UNDERGROUND TV
---	OVERHEAD UTILITY
---	UNDERGROUND UTILITY
---	UNDERGROUND FIBER OPTIC
---	CONTOUR (MAJOR)
---	CONTOUR (MINOR)
---	DECIDUOUS TREE
---	CONIFEROUS TREE
---	TREE LINE
---	MANHOLE/STRUCTURE
---	CATCH BASIN
---	HYDRANT
---	VALVE
---	CURB STOP
---	POWER POLE
---	UTILITY PEDESTAL / CABINET
PROPOSED	
---	LOT LINE
---	RIGHT OF WAY
---	EASEMENT
---	CULVERT
---	STORM SEWER
---	STORM SEWER (PIPE WIDTH)
---	SANITARY SEWER
---	SANITARY SEWER (PIPE WIDTH)
---	WATER
---	GAS
---	OVERHEAD ELECTRIC
---	UNDERGROUND ELECTRIC
---	UNDERGROUND TV
---	CONTOUR
---	MANHOLE
---	CATCH BASIN
---	HYDRANT
---	VALVE



LOCATION MAP
SCALE IN FEET
0 200 400

ABBREVIATIONS:

AC	ACRE	CMP	CORRUGATED METAL PIPE	FDN	FOUNDATION	HR	HOUR	MB	MAIL BOX	PVC	POLYVINYL CHLORIDE	TEL	TELEPHONE
ADA	AMERICANS WITH DISABILITIES ACT	CO	CLEANOUT	FFE	FINISHED FLOOR ELEVATION	HWL	HIGH WATER LEVEL	MECH	MECHANICAL	PVMT	PAVEMENT	TEMP	TEMPORARY
ADD	ADDENDUM	CONC	CONCRETE	FPM	FEET PER MINUTE	HWY	HIGHWAY	QTY	QUANTITY	RAD	RADIUS	THRU	THROUGH
AFF	ABOVE FINISHED FLOOR	CONST	CONSTRUCTION	FPS	FEET PER SECOND	HYD	HYDRANT	NO	NUMBER	RCP	REINFORCED CONCRETE PIPE	TNTH	TOP NUT OF FIRE HYDRANT
AGG	AGGREGATE	CONT	CONTINUOUS	FT	FOOT, FEET	I	INVERT	MISC	MISCELLANEOUS	RD	ROOF DRAIN	TRANS	TRANSFORMER
APPROX	APPROXIMATE	CY	CUBIC YARD	FTG	FOOTING	ID	INSIDE DIAMETER	NO	NUMBER	REBAR	REINFORCING BAR	TV	TELEVISION
ARCH	ARCHITECT, ARCHITECTURAL	C&G	CURB AND GUTTER	GAL	GALLON	INV	INVERT	NTS	NOT TO SCALE	ROW	RIGHT OF WAY	T/W	TOP OF WALL
BFE	BASEMENT FLOOR ELEVATION	DEMO	DEMOLITION	GALV	GALVANIZED	IP	IRON PIPE	NWL	NORMAL WATER LEVEL	R/W	RIGHT OF WAY	TYP	TYPICAL
BIT	BITUMINOUS	DIA	DIAMETER	GC	GENERAL CONTRACTOR	IPS	IRON PIPE SIZE	OC	ON CENTER	OCEW	ON CENTER EACH WAY	UT	UTILITY, UNDERGROUND
CAD	COMPUTER-AIDED DESIGN	DIM	DIMENSION	GFC	GENERAL CONTRACTOR	IT	JOINT	OHD	OVERHEAD	OH	OVERHEAD DOOR	VCP	VITRIFIED CLAY PIPE
CB	CATCH BASIN	DS	DOWNSPOUT	GFE	GARAGE FLOOR ELEVATION	J-BOX	JUNCTION BOX	OZ	OUNCE	OHD	OVERHEAD DOOR	W/O	WITHOUT
CFS	CUBIC FEET PER SECOND	EA	EACH	GL	GUTTER LINE	JT	JOINT	PED	PEDESTAL, PEDESTRIAN	PERF	PERFORATED	W/	WITH
CF	CUBIC FOOT	ELEC	ELECTRICAL	GPM	GALLONS PER MINUTE	LF	LINEAR FEET	PL	PEDESTAL, PEDESTRIAN	PL	PROPERTY LINE	YD	YARD
CI	CAST IRON	ELEV	ELEVATION	GV	GATE VALVE	LIN	LINEAR	PP	POLYPROPYLENE	PSI	POUNDS PER SQUARE INCH	YR	YEAR
CIP	CAST IRON PIPE	EQ	EQUAL	HDPE	HIGH DENSITY POLYETHYLENE	LPS	LOW PRESSURE STEAM	PSI	POUNDS PER SQUARE INCH	T/C	TOP OF CURB		
CIPC	CAST IN PLACE CONCRETE	EQ	EQUAL	HDPE	HIGH DENSITY POLYETHYLENE	LS	LUMP SUM						
CL	CONTROL JOINT	EX	EXISTING	HH	HANDHOLE	LSO	LOWEST STRUCTURAL OPENING						
CL	CENTERLINE	FDC	FIRE DEPARTMENT CONNECTION	HORIZ	HORIZONTAL	MAX	MAXIMUM						

PROJECT INDEX:

OWNER:
PM 2 LLC
PO Box 609
La Crosse, WI 54602

PROJECT ADDRESS:
2625 EAST AVE S
LA CROSSE, WI 54601

MANAGING OFFICE:

LA CROSSE OFFICE
201 MAIN STREET
SUITE 1020
LA CROSSE, WI 54601
PHONE: 608.789.2034

PROJECT MANAGER: KRIS ROPPE
EMAIL: KRISTOPHER.ROPPE@ISGNC.COM

SPECIFICATIONS REFERENCE
ALL CONSTRUCTION SHALL COMPLY WITH THE CITY OF LA CROSSE STANDARD SPECIFICATIONS, CURRENT EDITION, WISDOT STANDARD SPECIFICATIONS, 2021 EDITION, WISDOT CONSTRUCTION AND MATERIALS MANUAL, CURRENT EDITION, WISCONSIN DEPARTMENT OF SAFETY AND PROFESSIONAL SERVICES STATE PLUMBING CODE, CURRENT EDITION, AND STANDARD SPECIFICATION FOR SEWER & WATER CONSTRUCTION IN WISCONSIN, 6th EDITION, UNLESS DIRECTED OTHERWISE.

PROJECT DATUM
HORIZONTAL COORDINATES HAVE BEEN REFERENCED TO THE NORTH AMERICAN DATUM OF 1983 (NAD83), 2011 ADJUSTMENT (NAD83/2011) ON THE LA CROSSE COUNTY COORDINATE SYSTEM, IN U.S. SURVEY FEET.

B.M. ELEVATION=675.61
3/4" 1B 50FT SOUTH AND 15 FT WEST
OF THE SOUTHEAST BUILDING CORNER

TITLE SHEET

SHEET
G1-10

SHEET INDEX

G1-10	TITLE SHEET
C0-10	SITE DETAILS
C0-11	SITE DETAILS
C1-10	EROSION CONTROL NOTES & DETAILS
C1-20	EROSION CONTROL PLAN
C2-10	OVERALL EXISTING SITE PLAN
C2-20	EXISTING SITE & REMOVAL PLAN
C3-10	SITE & UTILITY PLAN
C4-10	GRADING PLAN
C5-10	SITE RESTORATION PLAN

PROJECT GENERAL NOTES

- ALL WORK SHALL CONFORM TO THE CONTRACT DOCUMENTS, WHICH INCLUDE, BUT ARE NOT LIMITED TO, THE OWNER - CONTRACTOR AGREEMENT, THE PROJECT MANUAL (WHICH INCLUDES GENERAL SUPPLEMENTARY CONDITIONS AND SPECIFICATIONS), DRAWINGS OF ALL DISCIPLINES AND ALL ADDENDA, MODIFICATIONS AND CLARIFICATIONS ISSUED BY THE ARCHITECT/ENGINEER.
- CONTRACT DOCUMENTS SHALL BE ISSUED TO ALL SUBCONTRACTORS BY THE GENERAL CONTRACTOR IN COMPLETE SETS IN ORDER TO ACHIEVE THE FULL EXTENT AND COMPLETE COORDINATION OF ALL WORK.
- WRITTEN DIMENSIONS TAKE PRECEDENCE OVER SCALED DIMENSIONS. NOTIFY ARCHITECT/ENGINEER OF ANY DISCREPANCIES OR CONDITIONS REQUIRING INFORMATION OR CLARIFICATION BEFORE PROCEEDING WITH THE WORK.
- FIELD VERIFY ALL EXISTING CONDITIONS AND DIMENSIONS. NOTIFY ARCHITECT/ENGINEER OF ANY DISCREPANCIES OR CONDITIONS REQUIRING INFORMATION OR CLARIFICATION BEFORE PROCEEDING WITH THE WORK.
- DETAILS SHOWN ARE INTENDED TO BE INDICATIVE OF THE PROFILES AND TYPE OF DETAILING REQUIRED THROUGHOUT THE WORK. DETAILS NOT SHOWN ARE SIMILAR IN CHARACTER TO DETAILS SHOWN. WHERE SPECIFIC DIMENSIONS, DETAILS OR DESIGN INTENT CANNOT BE DETERMINED, NOTIFY ARCHITECT/ENGINEER BEFORE PROCEEDING WITH THE WORK.
- ALL MANUFACTURED ARTICLES, MATERIALS AND EQUIPMENT SHALL BE APPLIED, INSTALLED, CONNECTED, ERECTED, CLEANED AND CONDITIONED ACCORDING TO MANUFACTURERS' INSTRUCTIONS. IN CASE OF DISCREPANCIES BETWEEN MANUFACTURERS' INSTRUCTIONS AND THE CONTRACT DOCUMENTS, NOTIFY ARCHITECT/ENGINEER BEFORE PROCEEDING WITH THE WORK.
- ALL DISSIMILAR METALS SHALL BE EFFECTIVELY ISOLATED FROM EACH OTHER TO AVOID GALVANIC CORROSION.
- THE LOCATION AND TYPE OF ALL INPLACE UTILITIES SHOWN ON THE PLANS ARE FOR GENERAL INFORMATION ONLY AND ARE ACCURATE AND COMPLETE TO THE BEST OF THE KNOWLEDGE OF I & S GROUP, INC. (ISG). NO WARRANTY OR GUARANTEE IS IMPLIED. THE CONTRACTOR SHALL VERIFY THE SIZES, LOCATIONS AND ELEVATIONS OF ALL INPLACE UTILITIES PRIOR TO CONSTRUCTION. CONTRACTOR SHALL IMMEDIATELY NOTIFY ENGINEER OF ANY DISCREPANCIES OR VARIATIONS FROM PLAN.
- THE CONTRACTOR IS TO CONTACT "DIGGER'S HOTLINE" FOR UTILITY LOCATIONS, MINIMUM 3 BUSINESS DAYS PRIOR TO ANY EXCAVATION / CONSTRUCTION (811 OR 1-800-242-8511).



THIS DOCUMENT IS THE PROPERTY OF I & S GROUP, INC. AND MAY NOT BE USED, COPIED OR DUPLICATED WITHOUT PRIOR WRITTEN CONSENT.

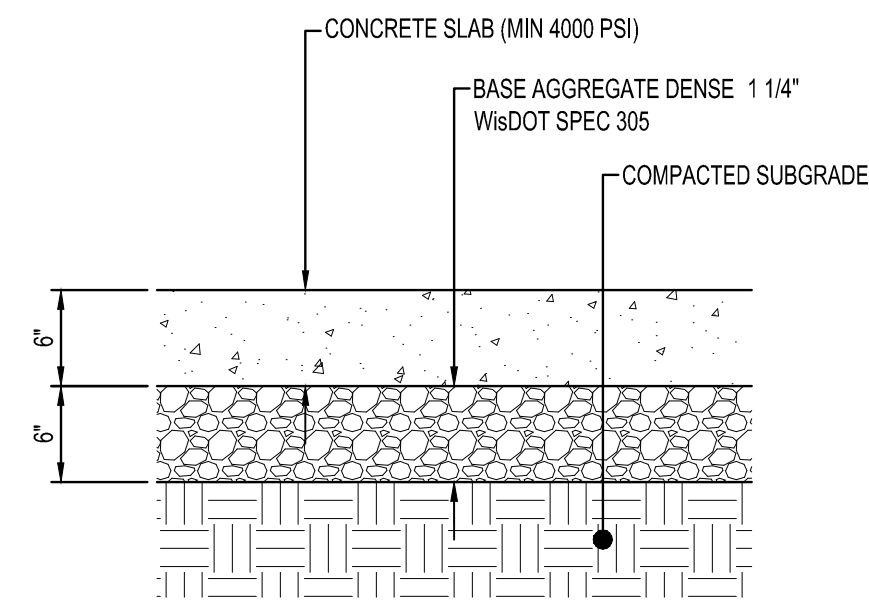
PROJECT
**EAST WARD
COMMERCE CENTER**
LA CROSSE WISCONSIN

REVISION SCHEDULE		
DATE	DESCRIPTION	BY

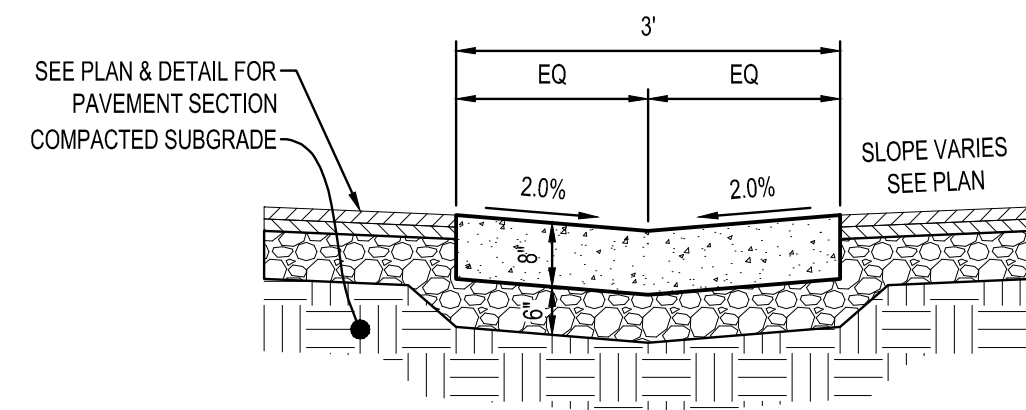
PROJECT NO. 20-24527
FILE NAME 24527 G1-TITLE
DRAWN BY CLF
DESIGNED BY CLF
REVIEWED BY KBR
ORIGINAL ISSUE DATE 02/05/2021
CLIENT PROJECT NO. -

TITLE
TITLE SHEET
SHEET
G1-10

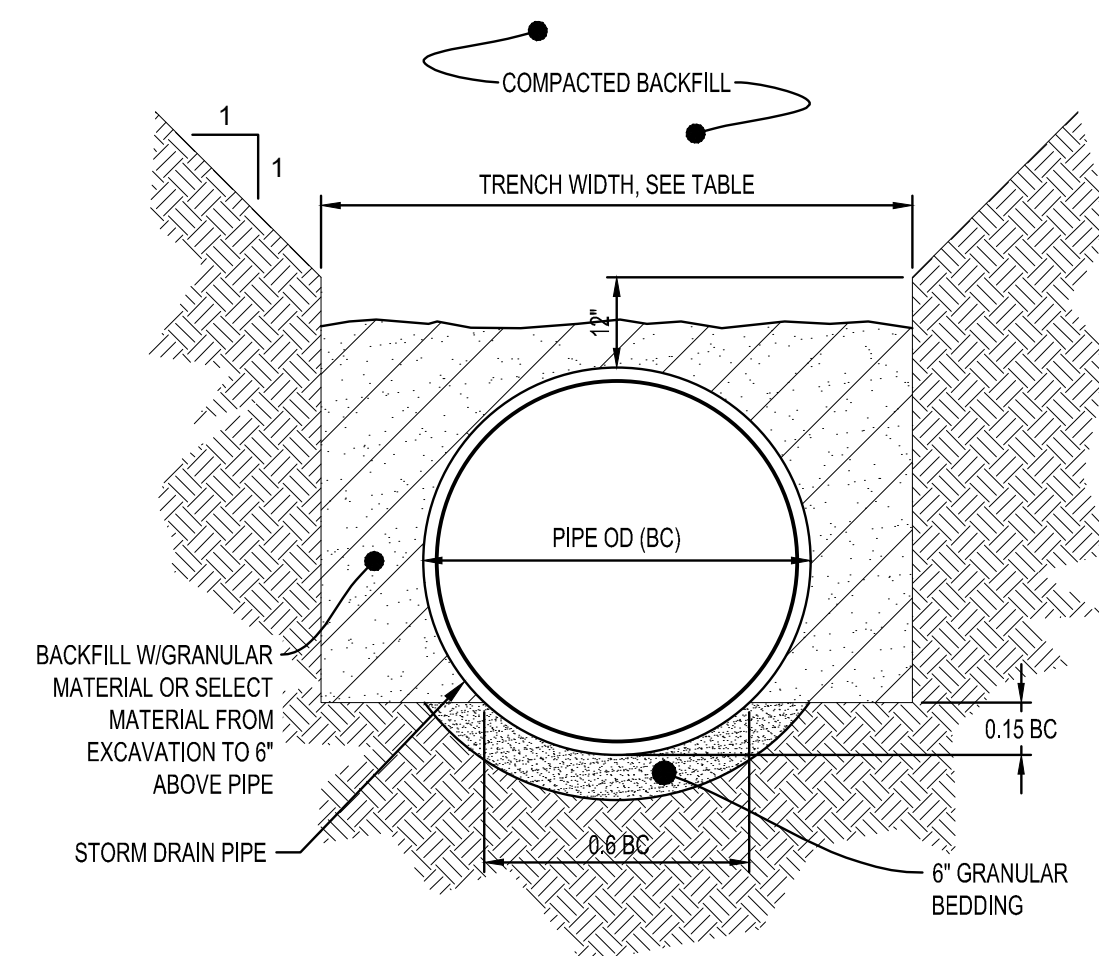
FOR REVIEW ONLY



STANDARD CONCRETE PAVEMENT
NTS ST120



CONCRETE VALLEY GUTTER
NTS ST260

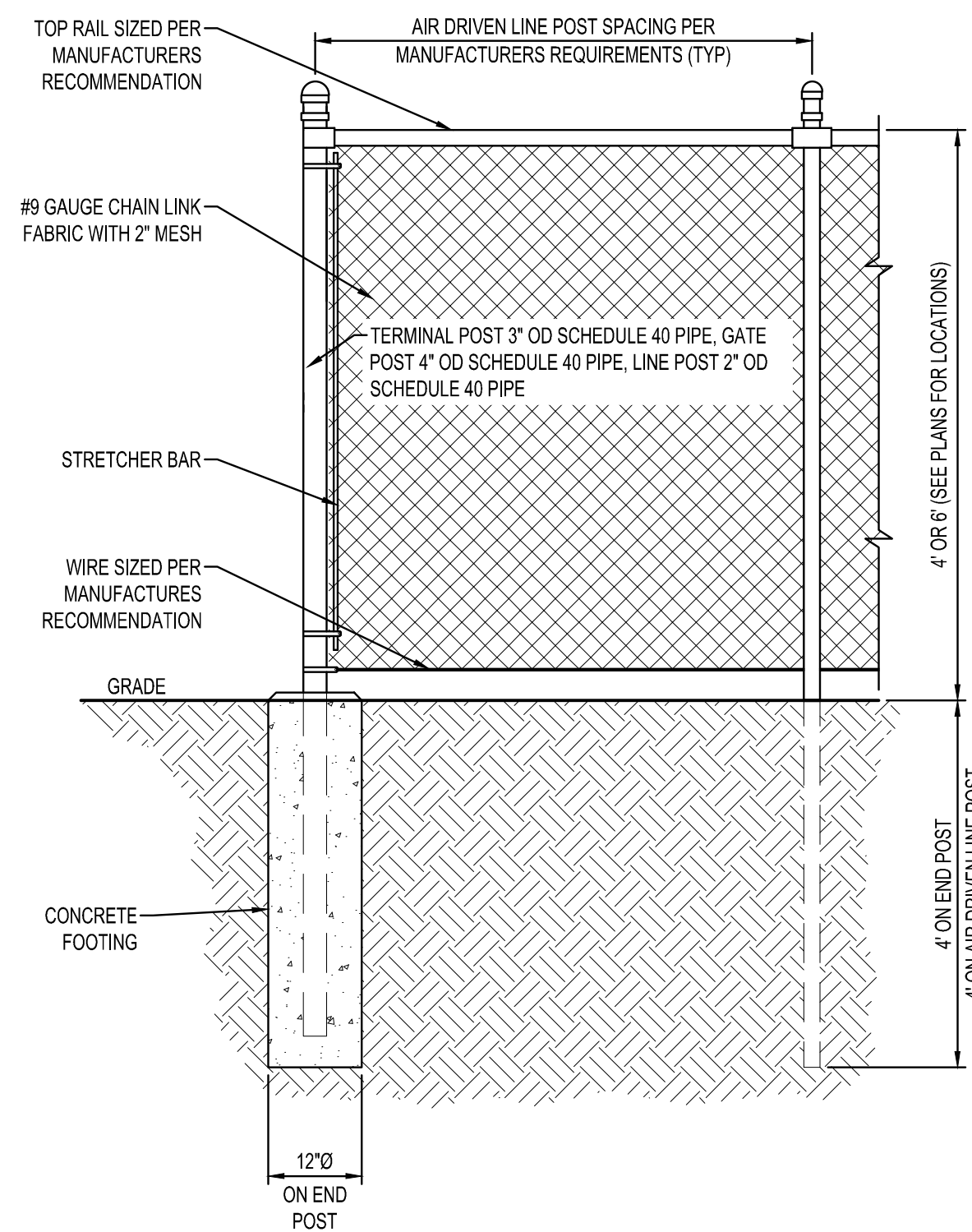


TRENCH WIDTH	
PIPE Ø	TRENCH WIDTH
36" OR LESS	BC + 24"
42" TO 54"	1.5 x BC
60" OR OVER	BC + 36"

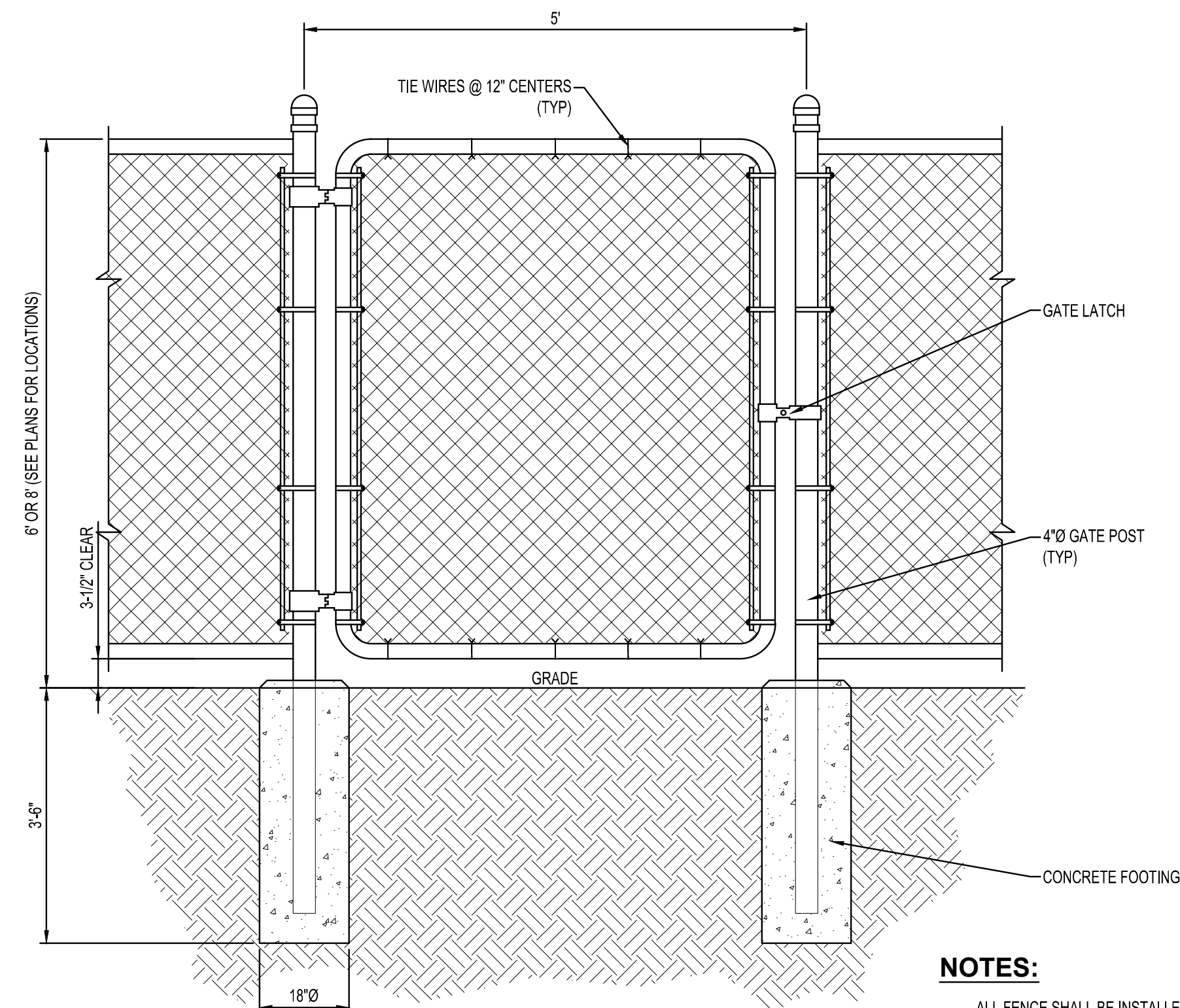
NOTES:
GRANULAR BEDDING AND BACKFILL FOR STORM DRAIN PIPES SHALL BE INCIDENTAL TO STORM DRAIN CONSTRUCTION

NON-CONCRETE STORM DRAIN PIPE BEDDING
NTS SD600

THIS DOCUMENT IS THE PROPERTY OF I & S GROUP, INC. AND MAY NOT BE USED, COPIED OR DUPLICATED WITHOUT PRIOR WRITTEN CONSENT.

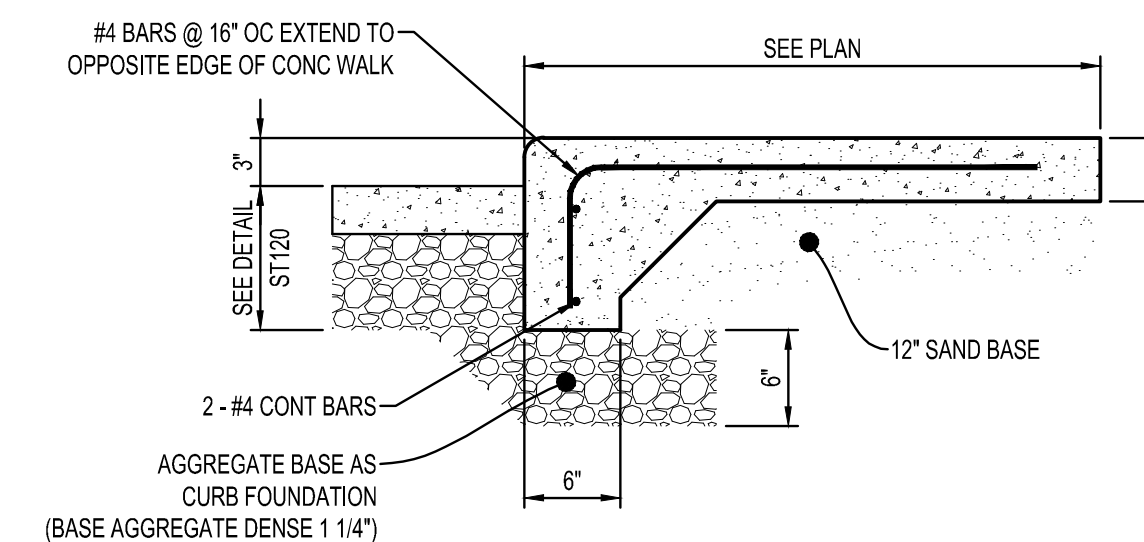


4' OR 6' CHAIN LINK FENCE
NTS LD204



NOTES:
ALL FENCE SHALL BE INSTALLED AS SHOWN ON THE PLANS, SPECS, AND ACCORDING TO ALL MANUFACTURERS SPECIFICATIONS.

CHAIN LINK FENCE GATE
NTS LD200



TURN DOWN CONCRETE SIDEWALK
NTS ST170

PROJECT

EAST WARD COMMERCE CENTER

LA CROSSE WISCONSIN

REVISION SCHEDULE		
DATE	DESCRIPTION	BY

PROJECT NO.	20-24527
FILE NAME	24527 CO-DETAILS
DRAWN BY	CLF
DESIGNED BY	CLF
REVIEWED BY	KBR
ORIGINAL ISSUE DATE	02/05/2021
CLIENT PROJECT NO.	-

TITLE

SITE DETAILS

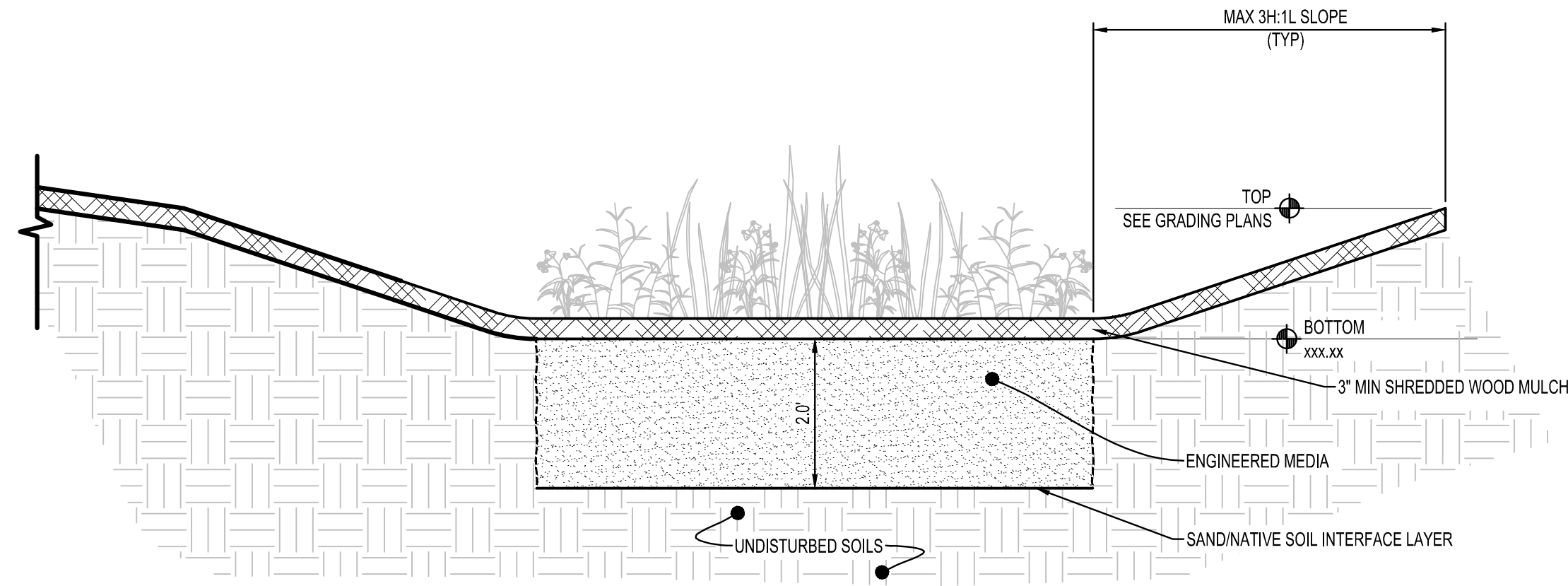
SHEET

C0-10

FOR REVIEW ONLY

FOR REVIEW ONLY

REFER TO
LANDSCAPING PLANS
FOR PLANTING DETAILS



ENGINEERED MEDIA COMPOSITION:

- 60% SILICA SAND - USDA COARSE SAND, (0.02 TO 0.04") PRE-WASHED TO REMOVE CLAY AND SILT PARTICLES AND WELL-DRAINED OR DRY PRIOR TO MIXING.
- 20% COMPOST - SHALL MEET DNR SPECIFICATION S100, COMPOST.
- 20% TOPSOIL.
- ENGINEERED SOIL MIX SHALL BE FREE OF ROCKS, STUMPS, ROOTS, BRUSH, OR OTHER MATERIAL OVER 1" DIA. NO OTHER MATERIALS SHALL BE MIXED WITH THE PLANTING SOIL THAT MAY BE HARMFUL TO THE PLANT GROWTH OR PROVE A HINDRANCE TO PLANTING OR MAINTENANCE.

- SAND / NATIVE SOIL INTERFACE LAYER:**
- 3" OF SAND SHALL BE VERTICALLY MIXED WITH THE NATIVE SOIL INTERFACE TO A DEPTH OF 2'-4".

NOTES:

- DESIGN INFILTRATION RATE = 0.5 IN/HR. ACTUAL INFILTRATION RATE MUST MEET OR EXCEED DESIGN RATE.
- BIO-INFILTRATION BASIN SHALL BE STAKED OFF AND MARKED TO KEEP ALL CONSTRUCTION TRAFFIC, EQUIPMENT, AND MATERIAL STOCK PILES OUT OF THE PROPOSED AREA.
- CONTRACTOR SHALL ENSURE THAT THE BIO-INFILTRATION BASIN IS NOT USED AS A SEDIMENT TRAP DURING CONSTRUCTION AND THAT NO RUNOFF ENTERS BIO-INFILTRATION BASIN PRIOR TO THE COMPLETION OF CONSTRUCTION AND COMPLETE STABILIZATION OF SURROUNDING AREAS. ALL UPLAND DRAINAGE MUST BE DIVERTED TO PREVENT RUNOFF FROM ENTERING BIO-INFILTRATION BASIN AREA.
- BIO-INFILTRATION BASIN SHALL BE CONSTRUCTED AT END OF PROJECT AFTER ALL AREAS SURROUNDING IT AND DRAINING INTO IT HAVE BEEN CONSTRUCTED AND FULLY STABILIZED. NO EQUIPMENT SHALL BE DRIVEN IN THE AREA OF THE BIO-INFILTRATION BASIN PRIOR TO ITS CONSTRUCTION AND ONLY LIGHT EARTH MOVING EQUIPMENT WITH TRACKS SHALL BE USED.
- IMMEDIATELY FOLLOWING BIO-INFILTRATION BASIN CONSTRUCTION, THE ENTIRE BIO-INFILTRATION BASIN SHALL BE SEEDED AND STABILIZED AS INDICATED IN THE CONTRACT DOCUMENTS. BIO-INFILTRATION BASIN MUST BE FULLY STABILIZED PRIOR TO ANY UPSTREAM RUNOFF BEING DIRECTED TO THE BASIN.

BIO-INFILTRATION BASIN
NTS

TYP. MAINTENANCE ACTIVITIES FOR BIORETENTION AREAS
ACTIVITY
WATER PLANTS
WATER AS NECESSARY DURING DRY PERIODS
RE-MULCH VOID AREAS
TREAT DISEASED TREES AND SHRUBS
INSPECT SOIL AND REPAIR ERODED AREAS
REMOVE LITTER AND DEBRIS
ADD ADDITIONAL MULCH



THIS DOCUMENT IS THE PROPERTY OF I & S GROUP, INC. AND MAY NOT BE USED, COPIED OR DUPLICATED WITHOUT PRIOR WRITTEN CONSENT.

PROJECT

**EAST WARD
COMMERCE CENTER**

LA CROSSE WISCONSIN

REVISION SCHEDULE		
DATE	DESCRIPTION	BY

PROJECT NO.	20-24527
FILE NAME	24527 C0-DETAILS
DRAWN BY	CLF
DESIGNED BY	CLF
REVIEWED BY	KBR
ORIGINAL ISSUE DATE	02/05/2021
CLIENT PROJECT NO.	-

TITLE

SITE DETAILS

SHEET

C0-11

FOR REVIEW ONLY

FOR REVIEW ONLY

CONSTRUCTION ACTIVITY NOTES:

EROSION PREVENTION:
Construction of silt fence and all other erosion control measures shall be complete before other construction activity occurs. Use phased construction wherever practical and establish turf as soon as possible to minimize sediment transport.

Temporary cover during construction is incidental.

Pipe outlets must be provided with temporary or permanent energy dissipation within 24 hours after connection to a surface water.

All disturbed areas shall be seeded and mulched at the earliest possible time to prevent/reduce erosion.

Refer to Landscaping Plan for restoration of disturbed areas.

Additional erosion prevention measures may be found at the Wisconsin Department of Natural Resources Best Management Practices.

SEDIMENT CONTROL PRACTICES:

Construction of silt fence and all other erosion control measures shall be complete prior to land disturbing activities occur.

A tracking pad entrance or other approved alternatives must be constructed at the exit point from the project site.

Inlet erosion protection shall be installed and maintained until turf or pavement has been established.

The contractor shall be responsible to control erosion from leaving the construction zone. All eroded material that leaves the construction zone shall be collected by the contractor and returned to the site at the contractor's expense.

Contractor shall maintain a 50-foot natural buffer or use redundant sediment controls near surface waters if a buffer is not feasible.

Contractor shall take the necessary steps to minimize soil compaction and preserve topsoil on site.

All streets must be swept within 24 hours when any tracking occurs.

Silt fence or other effective erosion control measures must be installed around the perimeter of any soil stockpiled, including temporary stockpiles, at this location or any other on the project site. Stockpiles cannot be placed in surface waters, including storm water conveyances such as curb and gutter systems, or conduits and ditches.

DEWATERING AND BASIN DRAINING:

Dewater sediment-laden water to sedimentation basins if possible, or use other BMP's to prevent erosion when discharging to surface waters. Use appropriate energy dissipation measures on all discharges.

Dewatering practices cannot cause nuisance conditions, erosion or in receiving channels or inundation of wetlands resulting in adverse impacts.

POLLUTION PREVENTION:

All solid waste collected from the construction site must be disposed in accordance with all applicable regulations.

All hazardous materials (oil, gasoline, fuel, paint, etc.) must be properly stored to prevent spills, leaks, or other discharge. Storage areas shall provide secondary containment and a hazardous materials spill kit. Equipment fueling and maintenance shall occur in a designated, contained area. Storage and disposal of hazardous waste must be in compliance with all applicable regulations. All runoff containing any hazardous material must be properly collected and disposed. No engine degreasing shall be allowed on site.

All sanitary wastes must be collected from portable units on site by a licensed sanitary waste management contractor. The units must be secured and shall be maintained on a regular basis as needed to prevent overflowing.

Emergency Spill Plan - The Contractor is responsible for all construction personnel to be informed of the manufacturers' recommended spill cleanup methods, and the location of that information and cleanup supplies. The Contractor shall modify the SWPPP as required within seven calendar days of knowledge of the release to: provide a description of the release, the circumstances leading to the release, and the date of the release. Plans must identify measures to prevent the recurrence of such releases. If a spill occurs, the following steps shall be followed:

1. Observe the safety precautions associated with the spilled material. Stop the source of the spill, if you can do so safely. Call 911 if fire or public safety hazards are created.
2. Contain the spilled material. Dirt, sand, or any semi-impermeable material may be used to create a containment structure to prevent the material from flowing.
3. Report the spill to Wisconsin's Spill Hotline at (800) 943-0003.
4. Clean up the spilled material and dispose of the wastes properly.

The contractor is responsible for monitoring air pollution and ensuring it does not exceed levels set by local, state, or federal regulations. This includes dust created by work being performed on the site. Air pollution and dust control correction is considered incidental to the unit bid prices for which work is being performed. Additional dust control measures may be required by the Engineer.

Concrete washout onsite: All liquid and solid wastes generated by concrete washout operations must be contained in a leak-proof containment facility or impermeable liner. A compacted clay liner that does not allow washout liquids to enter ground water is considered an impermeable liner. The liquid and solid wastes must not contact the ground, and there must not be runoff from the concrete washout operations or areas. Liquid and solid wastes must be disposed of properly. A sign must be installed adjacent to each washout facility to inform concrete equipment operators to utilize the proper facilities.

INSPECTION AND MAINTENANCE:

The Permittees must routinely inspect the construction site once every seven (7) days during active construction and within 24 hours of a rainfall event greater than 0.5 inches in a 24 hour period.

All inspections performed during construction must be recorded and records retained with the erosion plan in accordance with the Permit. Contractor is responsible for keeping a record of all rainfall data & erosion control maintenance until final establishment of turf.

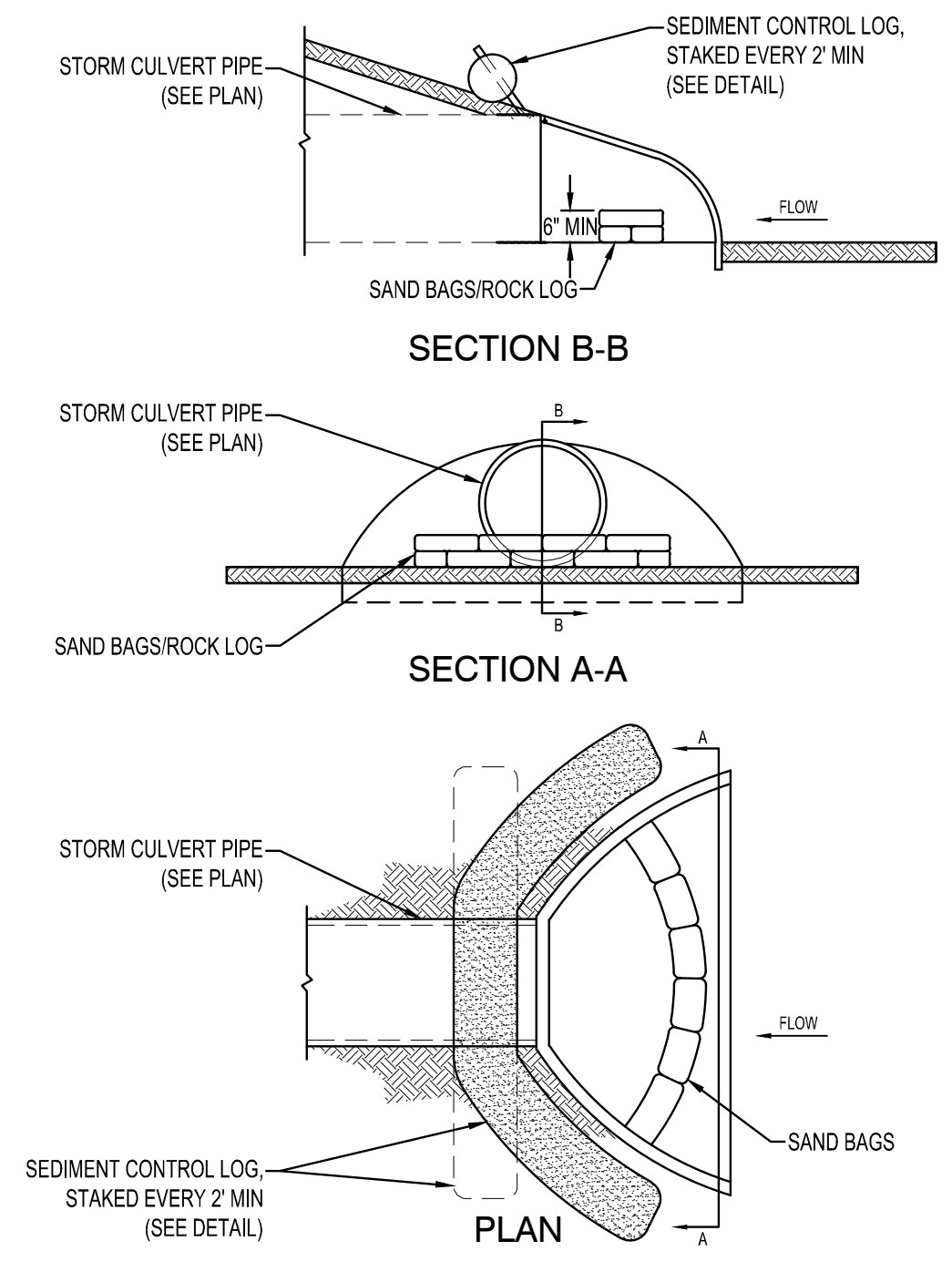
Erosion control and other BMP's must be replaced, repaired, or supplemented when they reach 33% design load.

FINAL STABILIZATION:

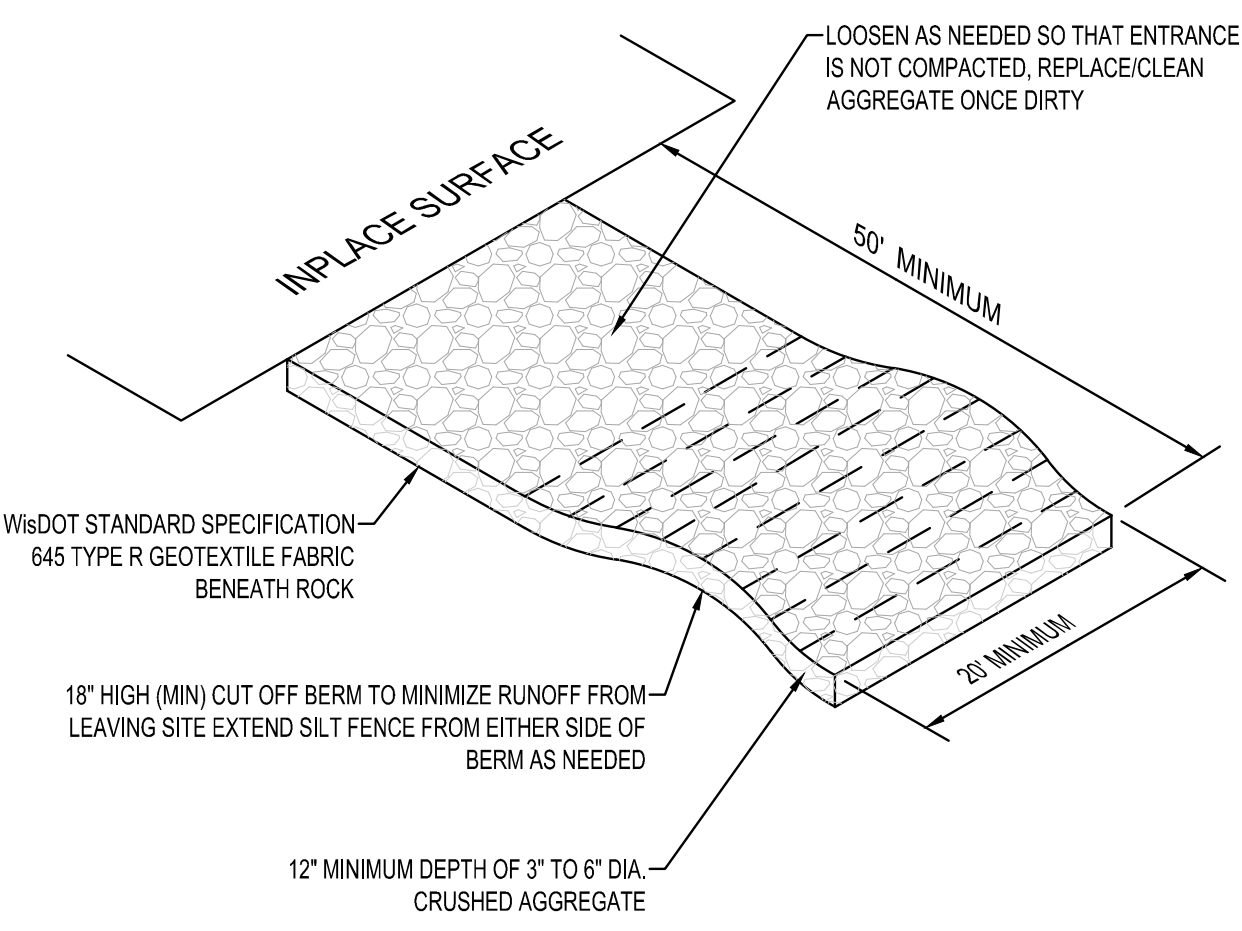
The Contractor must ensure final stabilization of the site. The Contractor must submit a Notice of Termination when the site has undergone final stabilization and all stormwater discharges associated with the construction site activities that require to have WPDES coverage have ceased.

All temporary erosion control measures and BMP's must be removed as part of the final site stabilization.

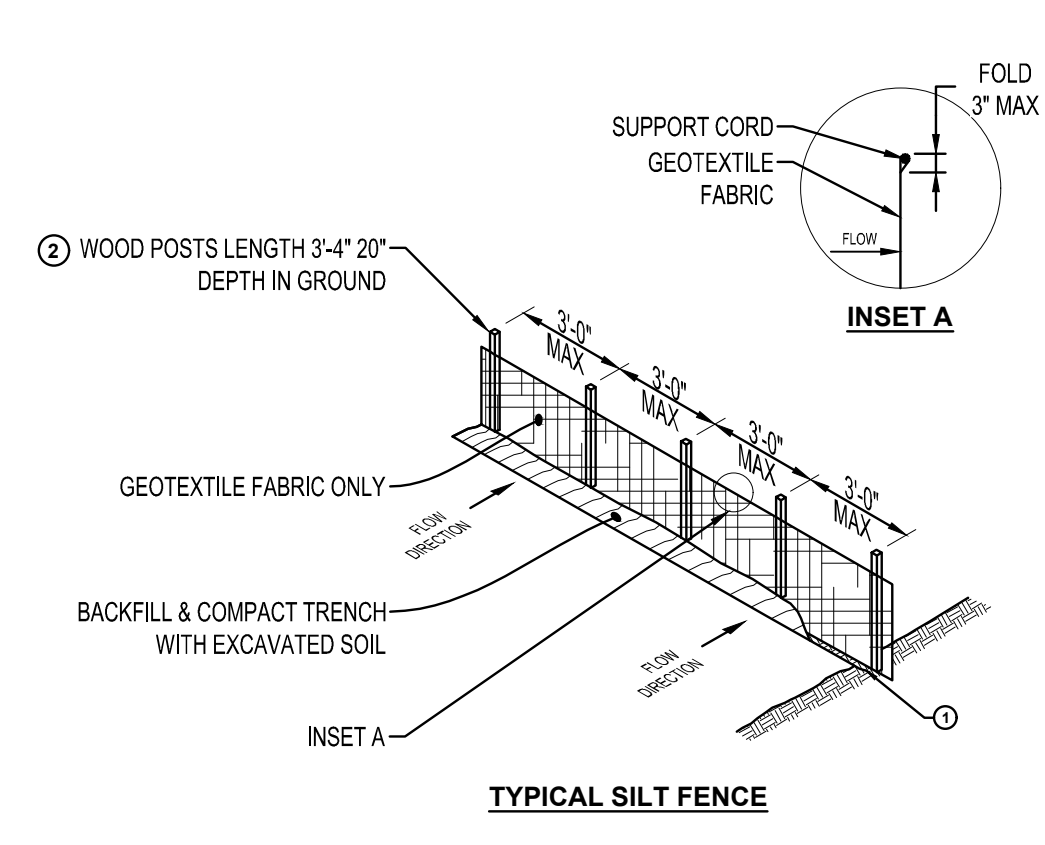
The storm water permit further defines final stabilization and its requirements.



CULVERT PIPE DITCH CHECK
NTS EC350



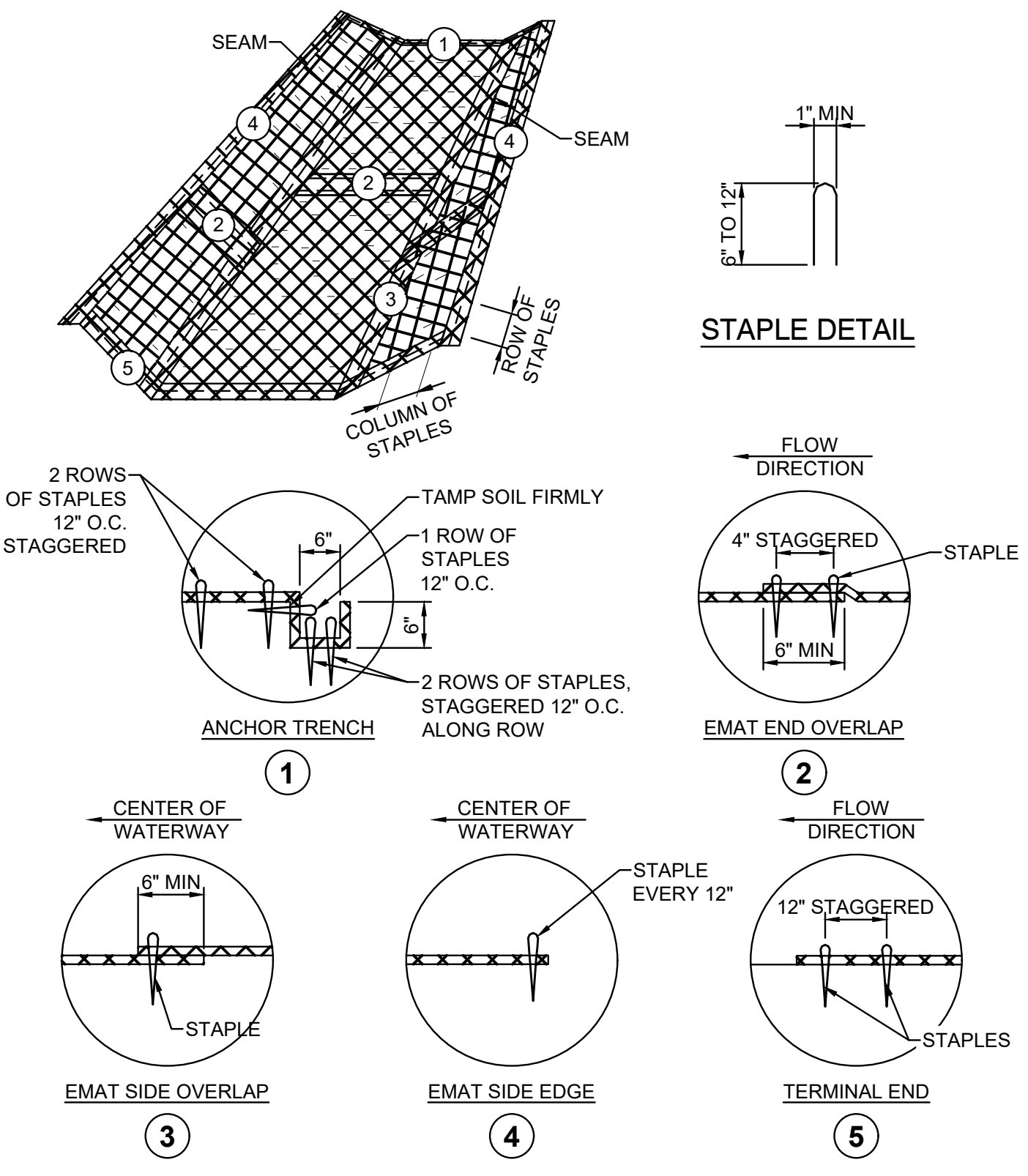
ROCK TRACKING PAD
NTS EC600



NOTES:

- ATTACH FABRIC TO THE POSTS WITH WIRE STAPLES OR WOODEN LATH & NAILS. ADDITIONAL POST DEPTH OR TIE BACKS MAY BE REQUIRED IN UNSTABLE SOILS. 8'-0" POST SPACING ALLOWED IF A WOVEN GEOTEXTILE FABRIC IS USED.
- TRENCH SHALL BE A MINIMUM OF 4" WIDE & 6" DEEP TO BURY & ANCHOR THE GEOTEXTILE FABRIC. FOLD MATERIAL TO FIT TRENCH, BACKFILL, & COMPACT TRENCH WITH EXCAVATED SOIL.
- WOOD POST SHALL BE A MINIMUM SIZE OF 1 1/2" x 1 1/2" OF OAK OR HICKORY.
- CONSTRUCT SILT FENCE FROM A CONTINUOUS ROLL IF POSSIBLE BY CUTTING LENGTHS TO AVOID JOINTS. IF A JOINT IS NECESSARY USE ONE OF THE FOLLOWING TWO METHODS.
 - A. TWIST METHOD - OVERLAP THE END POSTS & TWIST, OR ROTATE AT LEAST 180°.
 - B. HOOK METHOD - HOOK END OF EACH SILT FENCE LENGTH.

SILT FENCE
NTS EC100



NOTES:

- INSTALL EROSION MAT (EMAT) OVER WATERWAYS AS SHOWN IN THE EROSION CONTROL PLAN.
- THE EMAT SHALL CONFORM TO WisDOT STANDARD SPECIFICATIONS SECTION 628.
- PREPARE SOIL PRIOR TO INSTALLING EMAT, INCLUDING SEEDING AND FERTILIZING.
- THE EMAT SHALL BE PLACED IN FIRM CONTACT WITH THE SOIL AND NOT BE ALLOWED TO BRIDGE OVER SURFACE IRREGULARITIES. THE MAT SHALL NOT BE STRETCHED.
- START LAYING THE MATS BY ROLLING CENTER MAT IN THE DIRECTION OF FLOW. CENTERED ON THE CENTERLINE OF WATERWAY. THERE SHALL NOT BE AN OVERLAP OF MATS AT THE CENTER OF THE WATERWAY.
- THE EMAT SHALL BE ANCHORED, OVERLAPPED, AND STAPLED ACCORDING TO MANUFACTURER'S INSTRUCTIONS. IF NO MANUFACTURER'S INSTRUCTIONS ARE AVAILABLE, INSTALL THE MAT AS FOLLOWS.
 - STAPLES SHALL BE "U" SHAPED, 0.12" DIAMETER WIRE OR GREATER (#11 GAUGE), (SEE STAPLE DETAIL FOR DIMENSIONS)
 - BURY UPSTREAM END OF MAT IN A TRENCH 6" WIDE BY 6" DEEP AND STAPLED IN STAGGERED ROWS ACROSS THE WIDTH AS SHOWN IN DETAIL 1.
 - C. FOR JOINING ENDS OF ROLLS, OVERLAP END OF UP SLOPE MAT A MINIMUM OF 6" OVER DOWN SLOPE MAT (SHINGLE STYLE). USE A DOUBLE ROW OF STAGGERED STAPLES 4" APART, AS SHOWN IN DETAIL 2.
 - D. MATS ON SIDE SLOPES SHALL OVERLAP A MINIMUM OF 6" OVER THE MAT BELOW (SHINGLE STYLE). STAPLE OVERLAP AT 12" INTERVALS. (SEE DETAIL 3)
 - E. THE OUTER EDGE ALONG SIDES OF THE MAT SHALL BE STAPLED EVERY 12". (SEE DETAIL 4)
 - F. STAPLES ARE TO BE PLACED ALTERNATELY IN COLUMNS (IN THE DIRECTION OF THE WATERWAY) 2' APART AND IN ROWS (ACROSS THE WATERWAY) 3' APART THROUGHOUT THE AREA COVERED BY THE ECB.
 - G. DOWNSTREAM (TERMINAL) END OF BLANKET SHALL BE STAPLED WITH A DOUBLE ROW OF STAGGERED STAPLES 12" APART. (SEE DETAIL 5)

EROSION MAT INSTALLATION
NTS EC700



THIS DOCUMENT IS THE PROPERTY OF I & S GROUP, INC. AND MAY NOT BE USED, COPIED OR DUPLICATED WITHOUT PRIOR WRITTEN CONSENT.

PROJECT

**EAST WARD
COMMERCE CENTER**

LA CROSSE WISCONSIN

REVISION SCHEDULE		
DATE	DESCRIPTION	BY

PROJECT NO.	20-24527
FILE NAME	24527 CO-DETAILS
DRAWN BY	CLF
DESIGNED BY	CLF
REVIEWED BY	KBR
ORIGINAL ISSUE DATE	02/05/2021
CLIENT PROJECT NO.	-

TITLE

EROSION CONTROL NOTES & DETAILS

SHEET

FOR REVIEW ONLY

FOR REVIEW ONLY

EROSION CONTROL LEGEND

SYMBOL	DESCRIPTION		
	PERIMETER CONTROL		EROSION CONTROL MAT, CLASS I TYPE A
	STORM DRAIN INLET PROTECTION		CONCRETE WASHOUT AREA
	STABILIZED CONSTRUCTION EXIT		
	EXISTING DRAINAGE ARROW		PROPOSED DRAINAGE ARROW
	EXISTING CONTOUR (MINOR INTERVAL)		PROPOSED CONTOUR (MINOR INTERVAL)
	EXISTING CONTOUR (MAJOR INTERVAL)		PROPOSED CONTOUR (MAJOR INTERVAL)

PERIMETER CONTROL CAN BE SILT FENCE OR SEDIMENT CONTROL LOG.
 SEE SITE RESTORATION PLAN FOR FINAL TURF ESTABLISHMENT.
 NOTE: EROSION CONTROL PLAN COVERAGE INCLUDES ELECTRIC, GAS, TELEPHONE, AND CABLE INSTALLATION. EACH COMPANY OR THEIR SUBCONTRACTOR IS RESPONSIBLE TO FOLLOW THE REQUIREMENTS OF THIS EROSION CONTROL PLAN INCLUDING PROVIDING THEIR OWN RESTORATION IF INSTALLATION OCCURS AFTER PRIMARY INSTALLATION OF SEEDING/SODDING/MULCHING DURING CONSTRUCTION OF EACH UTILITY.

EROSION CONTROL QUANTITIES

DESCRIPTION	UNITS	QUANTITY
STORM DRAIN INLET PROTECTION	EACH	2
PERIMETER CONTROL	LF	650
STABILIZED CONSTRUCTION EXIT	EACH	1
EROSION CONTROL MAT, CLASS I TYPE A	SY	800
CONCRETE WASHOUT AREA	EA	—

STORM WATER POLLUTION PREVENTION PLAN NOTES:

GENERAL PROJECT INFORMATION:

PROJECT NARRATIVE:
 This project consists of the construction of a storage buildings, concrete pavement, and storm sewer along with all the necessary grading, utilities, storm water management, erosion control, and any additional components.

RESPONSIBLE PARTIES:
 Owner are required to apply for and receive a Wisconsin Pollution Discharge Elimination System (WPDES) Stormwater Construction Permit from the WDNR at least 14 working days prior to beginning work.

Contractor and owner shall identify a person knowledgeable and experienced in the application of erosion prevention and sediment control BMP's who will oversee the implementation of the erosion control plan.

Company: _____ Contact Person: _____ Phone: _____

Company: _____ Contact Person: _____ Phone: _____

Owner shall identify the entity responsible for the long term Operation and Maintenance of the storm water management system.

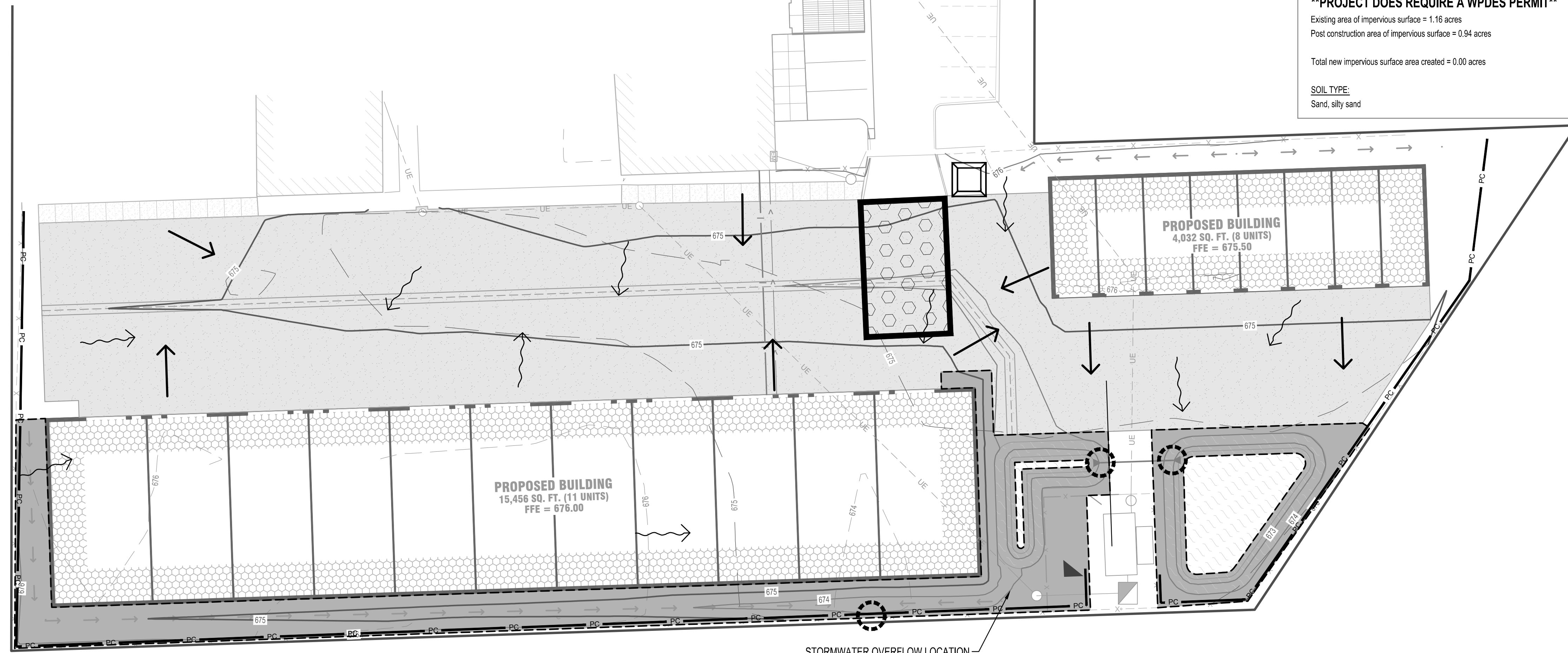
Company: _____ Contact Person: _____ Phone: _____

PROJECT AREAS:
 Total project size (disturbed area) = 1.22 acres
 Minimum area requiring WDNR permit = 1.00 acres
****PROJECT DOES REQUIRE A WPDES PERMIT****

Existing area of impervious surface = 1.16 acres
 Post construction area of impervious surface = 0.94 acres

Total new impervious surface area created = 0.00 acres

SOIL TYPE:
 Sand, silty sand



STORMWATER OVERFLOW LOCATION



THIS DOCUMENT IS THE PROPERTY OF I & S GROUP, INC. AND MAY NOT BE USED, COPIED OR DUPLICATED WITHOUT PRIOR WRITTEN CONSENT.

**EAST WARD
 COMMERCE CENTER**

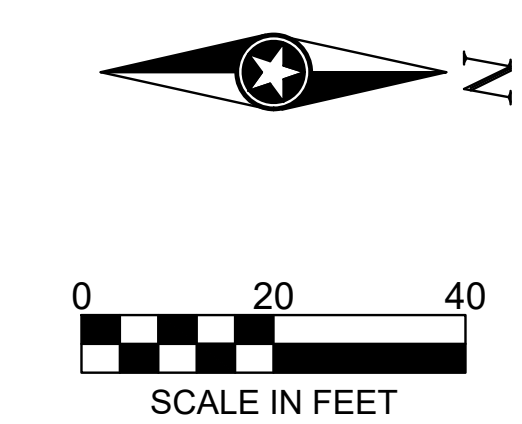
LA CROSSE WISCONSIN

REVISION SCHEDULE		
DATE	DESCRIPTION	BY

PROJECT NO.	20-24527
FILE NAME	24527 C1-SWPPP
DRAWN BY	CLF
DESIGNED BY	CLF
REVIEWED BY	KBR
ORIGINAL ISSUE DATE	02/05/2021
CLIENT PROJECT NO.	-

**EROSION
 CONTROL PLAN**

SHEET
C1-20



FOR REVIEW ONLY



THIS DOCUMENT IS THE PROPERTY OF I & S GROUP, INC. AND MAY NOT BE USED, COPIED OR DUPLICATED WITHOUT PRIOR WRITTEN CONSENT.

PROJECT
**EAST WARD
 COMMERCE CENTER**

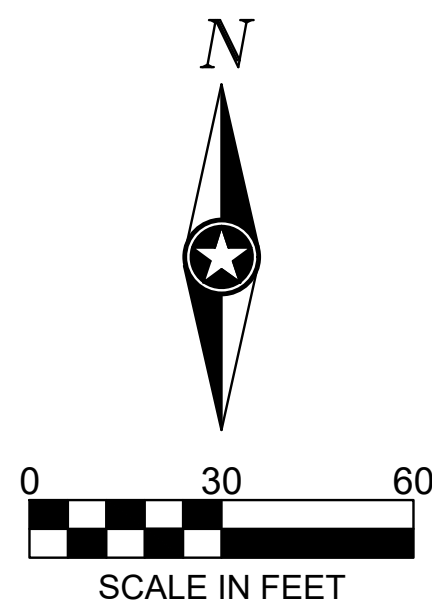
LA CROSSE WISCONSIN

REVISION SCHEDULE		
DATE	DESCRIPTION	BY

PROJECT NO.	20-24527
FILE NAME	24527 C2-EXIST
DRAWN BY	CLF
DESIGNED BY	CLF
REVIEWED BY	KBR
ORIGINAL ISSUE DATE	02/05/2021
CLIENT PROJECT NO.	-

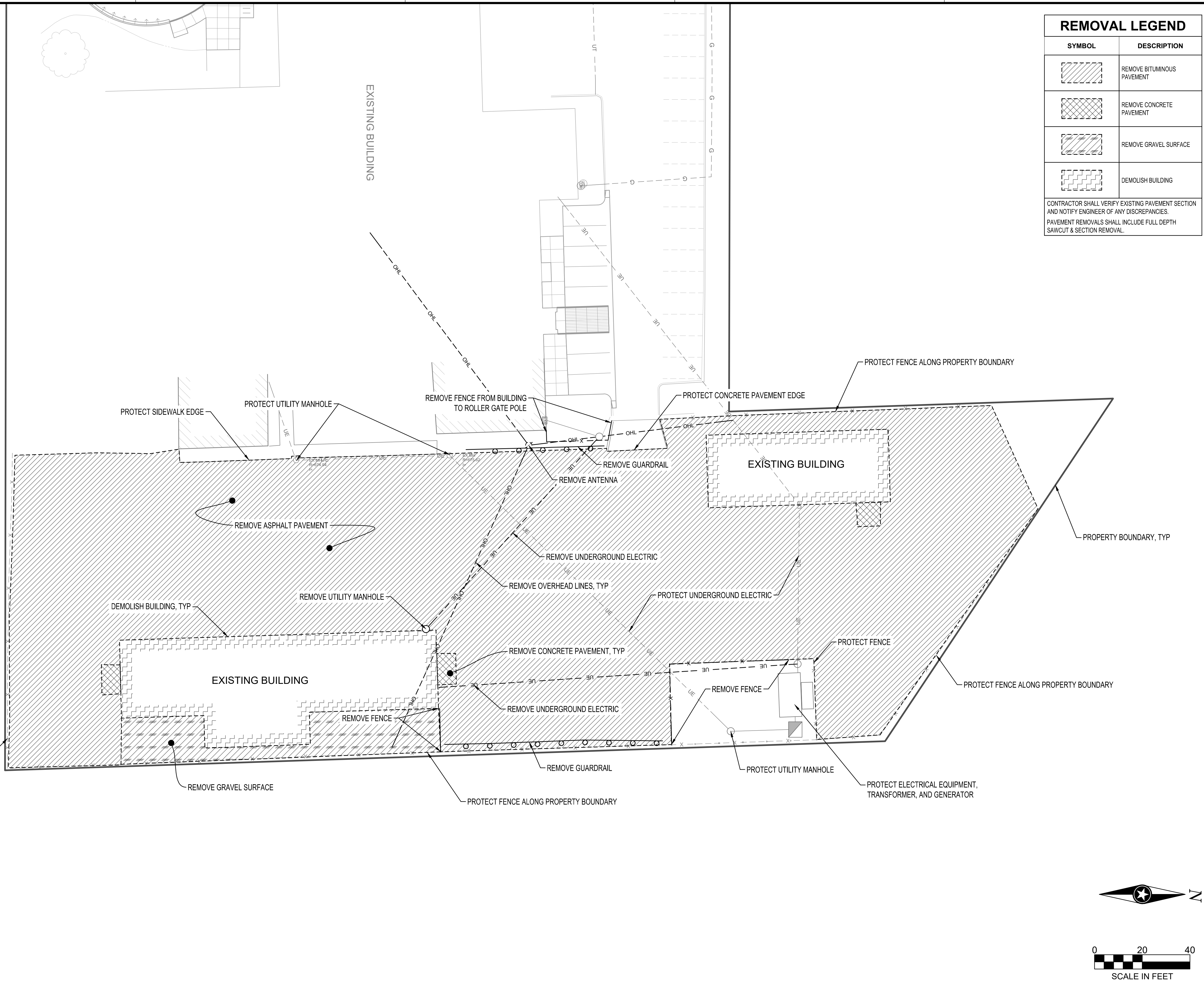
TITLE
**OVERALL
 EXISTING SITE
 PLAN**

SHEET
C2-10



FOR REVIEW ONLY

FOR REVIEW ONLY



REMOVAL LEGEND	
SYMBOL	DESCRIPTION
	REMOVE BITUMINOUS PAVEMENT
	REMOVE CONCRETE PAVEMENT
	REMOVE GRAVEL SURFACE
	DEMOLISH BUILDING

CONTRACTOR SHALL VERIFY EXISTING PAVEMENT SECTION AND NOTIFY ENGINEER OF ANY DISCREPANCIES.
PAVEMENT REMOVALS SHALL INCLUDE FULL DEPTH SAWCUT & SECTION REMOVAL.



THIS DOCUMENT IS THE PROPERTY OF I & S GROUP, INC. AND MAY NOT BE USED, COPIED OR DUPLICATED WITHOUT PRIOR WRITTEN CONSENT.

PROJECT

EAST WARD COMMERCE CENTER

LA CROSSE WISCONSIN

REVISION SCHEDULE		
DATE	DESCRIPTION	BY

PROJECT NO.	20-24527
FILE NAME	24527 C2-EXIST
DRAWN BY	CLF
DESIGNED BY	CLF
REVIEWED BY	KBR
ORIGINAL ISSUE DATE	02/05/2021
CLIENT PROJECT NO.	-

TITLE

EXISTING SITE & REMOVAL PLAN

SHEET

C2-20

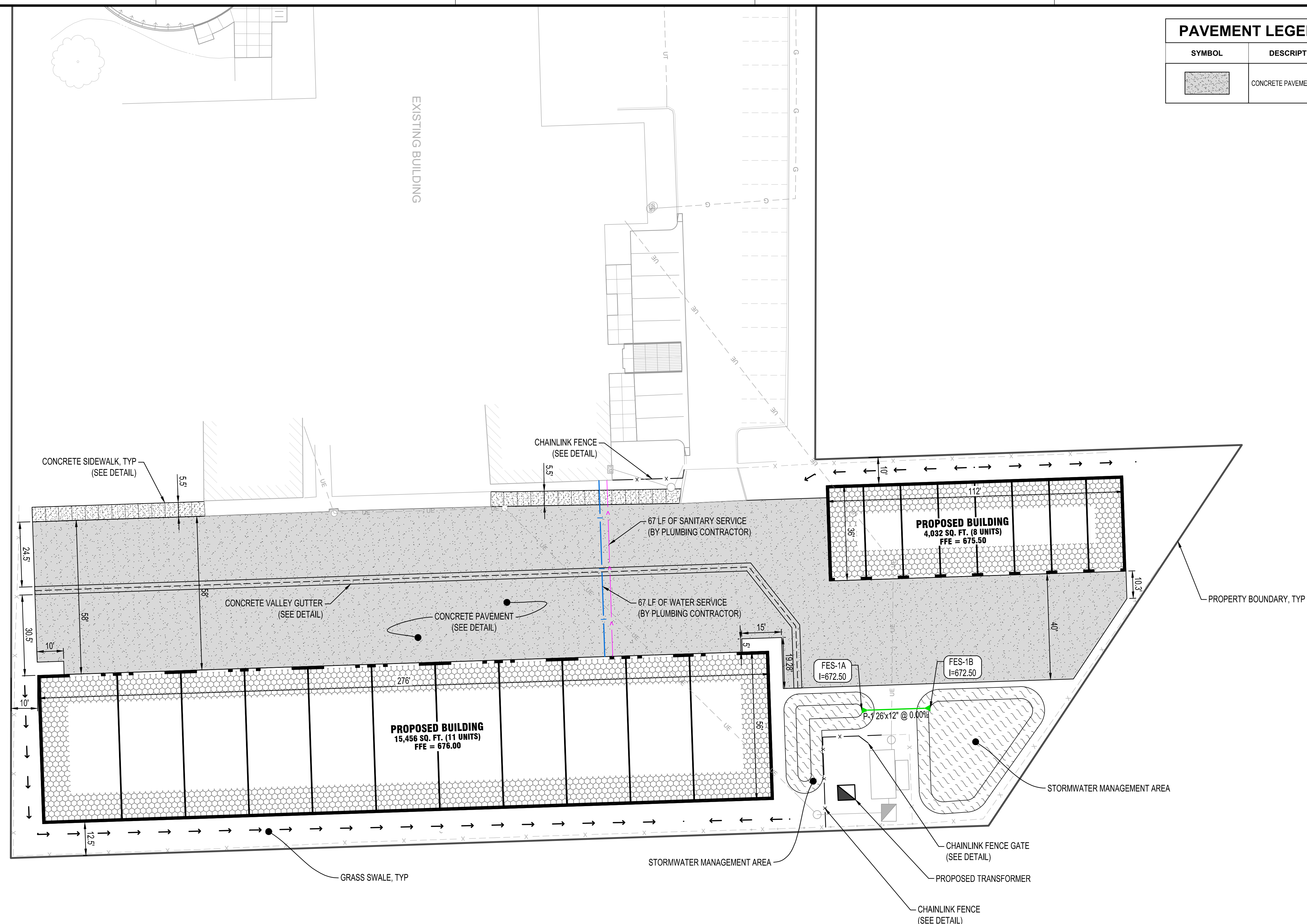


FOR REVIEW ONLY

FOR REVIEW ONLY



PAVEMENT LEGEND	
SYMBOL	DESCRIPTION
	CONCRETE PAVEMENT



THIS DOCUMENT IS THE PROPERTY OF I & S GROUP, INC. AND MAY NOT BE USED, COPIED OR DUPLICATED WITHOUT PRIOR WRITTEN CONSENT.

PROJECT
**EAST WARD
COMMERCE CENTER**

LA CROSSE WISCONSIN

REVISION SCHEDULE		
DATE	DESCRIPTION	BY

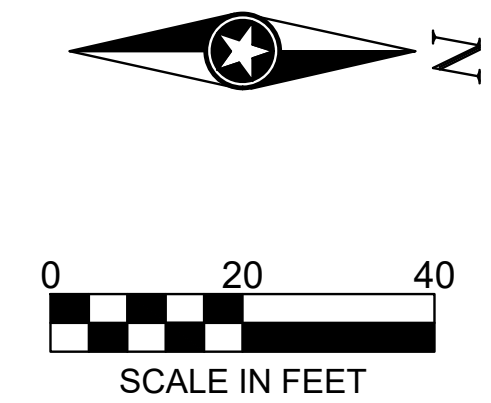
PROJECT NO.	20-24527
FILE NAME	24527 C3-SITE
DRAWN BY	CLF
DESIGNED BY	CLF
REVIEWED BY	KBR
ORIGINAL ISSUE DATE	02/05/2021
CLIENT PROJECT NO.	-

TITLE
**SITE & UTILITY
PLAN**

SHEET
C3-10

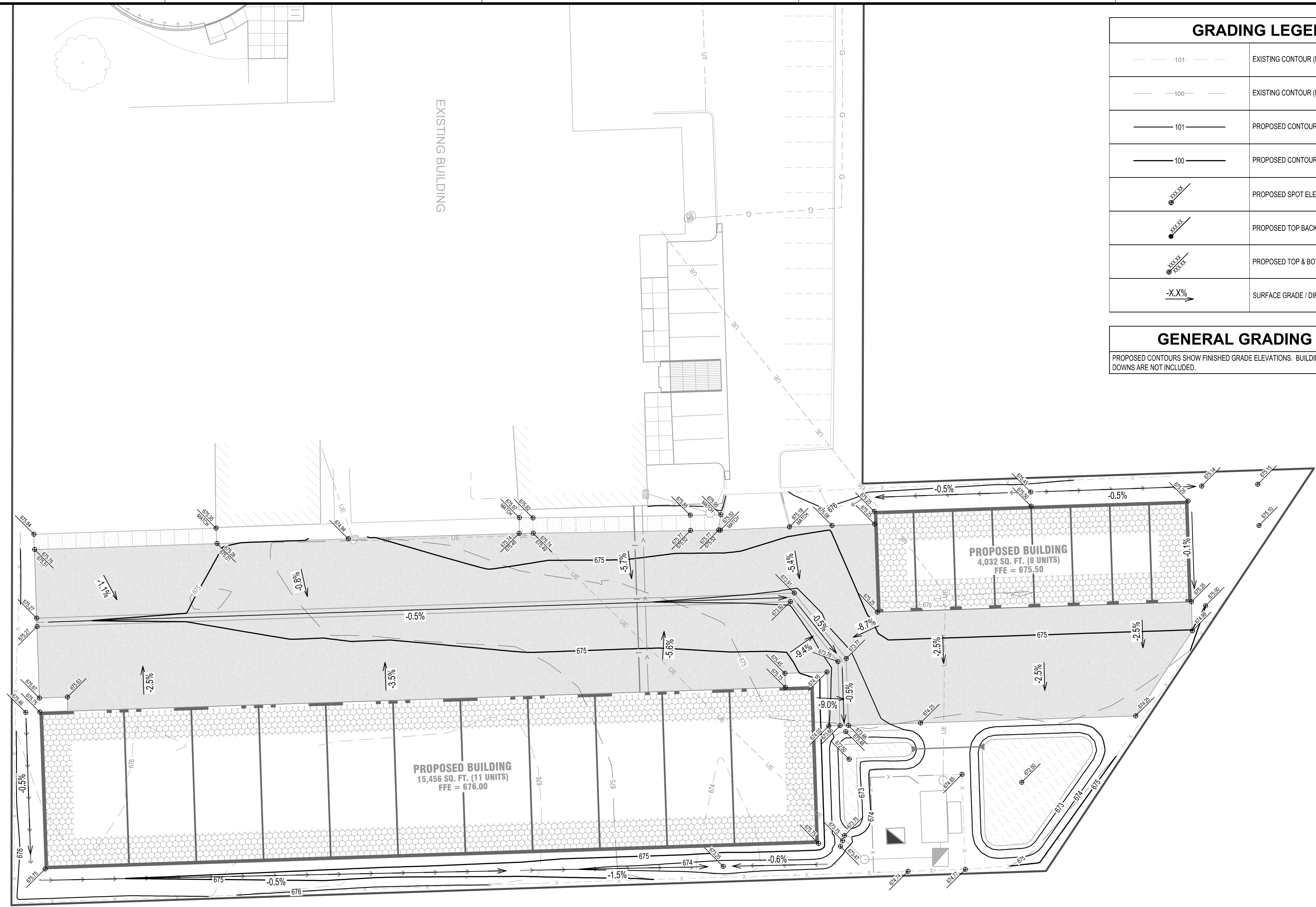
APRON NO.	APRON SIZE (in)	APRON MATERIAL	INVERT ELEVATION	PIPE NO.
FES-1A	12	HDPE	672.50	P-1
FES-1B	12	HDPE	672.50	P-1

PIPE NO.	DRAIN FROM	INLET ELEVATION	DRAIN TO	OUTLET ELEVATION	PIPE SIZE (IN)	MATERIAL	PIPE CLASS	PIPE GRADE	PIPE LENGTH (FT)
P-1	FES-1B	672.50	FES-1A	672.50	12	HDPE	HDPE	0.00%	26



FOR REVIEW ONLY

FOR REVIEW ONLY



GRADING LEGEND	
---101---	EXISTING CONTOUR (MINOR INTERVAL)
---100---	EXISTING CONTOUR (MAJOR INTERVAL)
—101—	PROPOSED CONTOUR (MINOR INTERVAL)
—100—	PROPOSED CONTOUR (MAJOR INTERVAL)
● 101.0	PROPOSED SPOT ELEVATION
● 101.0	PROPOSED TOP BACK OF CURB SPOT ELEVATION
● 101.0 / ● 100.0	PROPOSED TOP & BOTTOM ELEVATION
-X.X%	SURFACE GRADE / DIRECTION

GENERAL GRADING NOTES
 PROPOSED CONTOURS SHOW FINISHED GRADE ELEVATIONS. BUILDING PAD AND PAVEMENT HOLD DOWNS ARE NOT INCLUDED.



THIS DOCUMENT IS THE PROPERTY OF I & S GROUP, INC. AND MAY NOT BE USED, COPIED OR DUPLICATED WITHOUT PRIOR WRITTEN CONSENT.

PROJECT
**EAST WARD
 COMMERCE CENTER**
 LA CROSSE WISCONSIN

REVISION SCHEDULE		
DATE	DESCRIPTION	BY

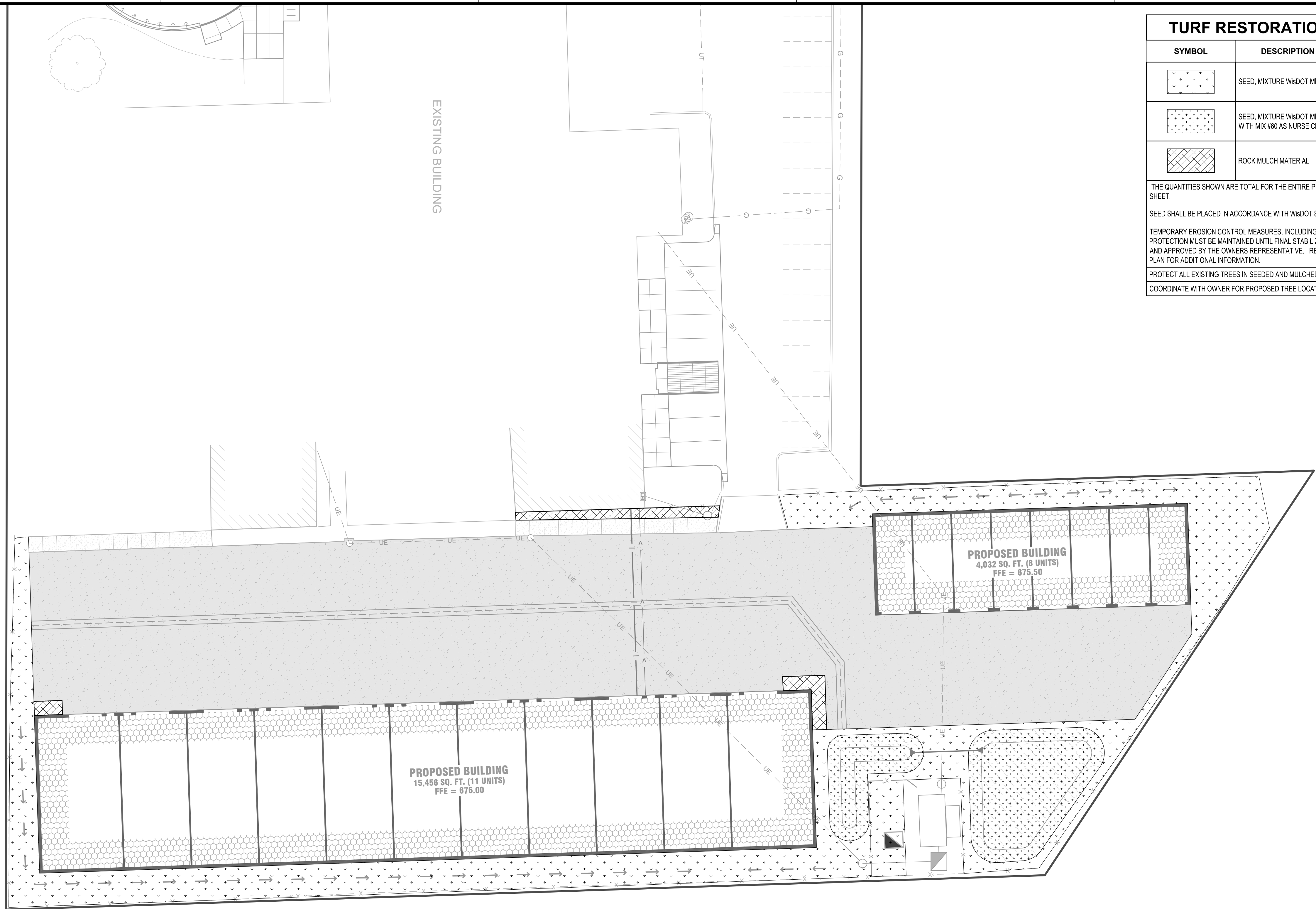
PROJECT NO. 20-24527
 FILE NAME 24527 C4-GRADE
 DRAWN BY CLF
 DESIGNED BY CLF
 REVIEWED BY KBR
 ORIGINAL ISSUE DATE 02/05/2021
 CLIENT PROJECT NO. -

TITLE
GRADING PLAN

SHEET
C4-10

FOR REVIEW ONLY

FOR REVIEW ONLY



TURF RESTORATION LEGEND			
SYMBOL	DESCRIPTION	UNITS	QUANTITY
	SEED, MIXTURE WisDOT MIX #20	AC	.21
	SEED, MIXTURE WisDOT MIX #75 WITH MIX #60 AS NURSE CROP	AC	.05
	ROCK MULCH MATERIAL	CY	15

THE QUANTITIES SHOWN ARE TOTAL FOR THE ENTIRE PROJECT NOT SPECIFIC TO THIS SHEET.

SEED SHALL BE PLACED IN ACCORDANCE WITH WisDOT SPECIFICATION SECTION 630.

TEMPORARY EROSION CONTROL MEASURES, INCLUDING PERIMETER CONTROL AND INLET PROTECTION MUST BE MAINTAINED UNTIL FINAL STABILIZATION MEASURES ARE IN PLACE AND APPROVED BY THE OWNERS REPRESENTATIVE. REFER TO THE EROSION CONTROL PLAN FOR ADDITIONAL INFORMATION.

PROTECT ALL EXISTING TREES IN SEEDED AND MULCHED AREAS.

COORDINATE WITH OWNER FOR PROPOSED TREE LOCATIONS



THIS DOCUMENT IS THE PROPERTY OF I & S GROUP, INC. AND MAY NOT BE USED, COPIED OR DUPLICATED WITHOUT PRIOR WRITTEN CONSENT.

PROJECT

**EAST WARD
COMMERCE CENTER**

LA CROSSE WISCONSIN

REVISION SCHEDULE		
DATE	DESCRIPTION	BY

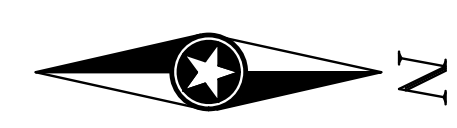
PROJECT NO.	20-24527
FILE NAME	24527 C-LAND
DRAWN BY	CLF
DESIGNED BY	CLF
REVIEWED BY	KBR
ORIGINAL ISSUE DATE	02/05/2021
CLIENT PROJECT NO.	-

TITLE

**SITE
RESTORATION
PLAN**

SHEET

C5-10



FOR REVIEW ONLY

FOR REVIEW ONLY