

Station 1 Windows

Maintenance or replacement needed

Station 1

726 5th Ave S

- **50 Windows** in total of this style throughout the Station.
- 33 windows on Division 2.
- 17 windows on Division 1.





Caulk has become dry and is causing cracking. Examples from both divisions of Station 1.

Half the windows in the station are starting to get caulk cracking.

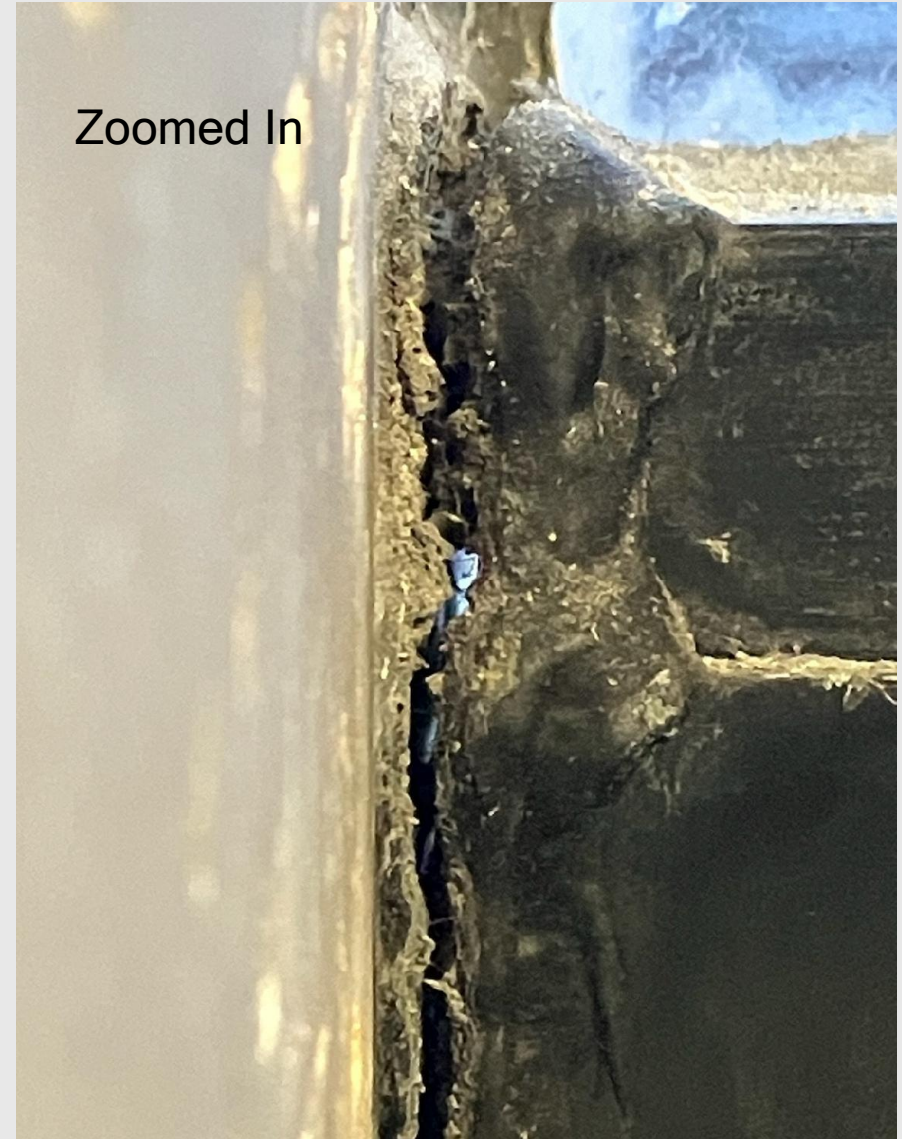


Zoomed out



3 Windows were noted with enough caulk damage that you can see a visible gap to the outside. Causing an extreme amount of cold air into that area of the room.

Zoomed In



Several windows have shifted causing the frames to pull apart.



Frost

- Temperatures below 10 degrees cause a large amount of frost and moisture build up.

