



# Advisory Report on Public Art Work in the City of La Crosse

APPROVED BY ARTS BOARD 01/04/2019

PREPARED BY BARRY MCKNIGHT AND DILLON MCARDLE

*The Eagle* (1987) by Elmer Petersen  
Welded Cor-Ten and stainless steel

Located at 2nd St. & Main St.

Dedicated to the past, present, and future  
Employees of Gateway Foods, Inc. and  
Affiliated Companies from the D. B.  
Reinhart Family.

**Condition**

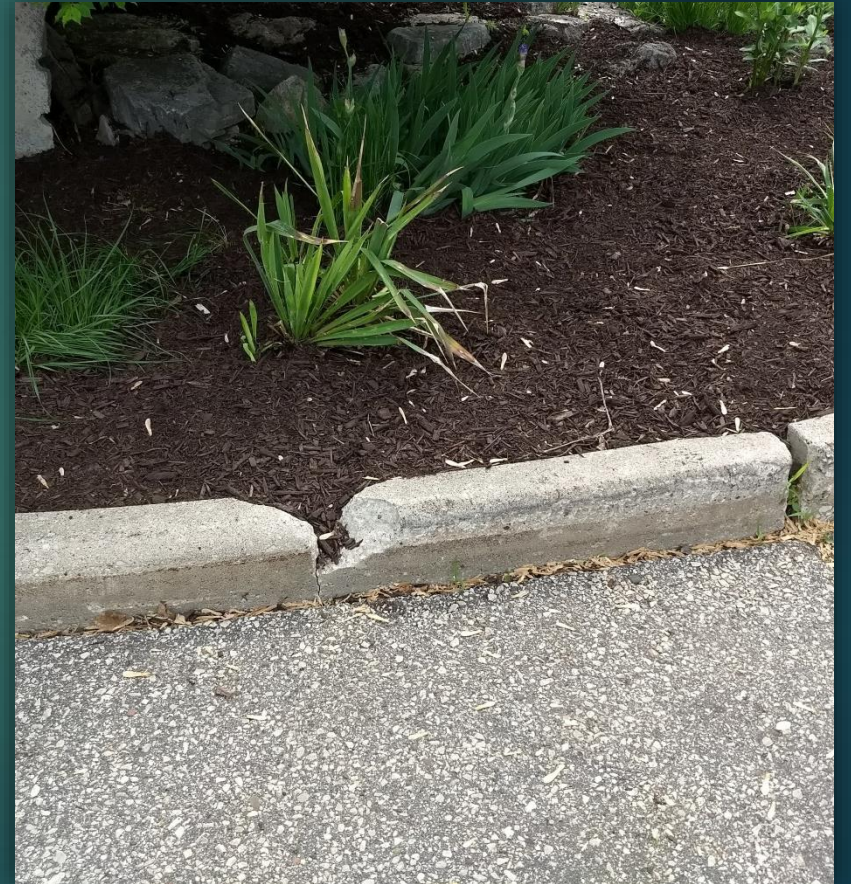
*An I-beam provides the framework for work and  
the sculpture is stable.*



*Steel on every side at the base is rusting away. Several areas on the upper surface of the structure are showing cracks and are also rusting through.*



The landscaping around the sculpture needs work and attention. A large planter is held together with zip ties. The curbing around the sculpture site is crumbling.



## **Recommendation**

*This sculpture is a focal point of one of the city's main cultural and tourist areas; it needs greater attention.*

- ***Use funds allocated Capital Improvement Program to repair sculpture in 2020***
- ***Maintenance and replacement of plantings at the base of the sculpture***
- ***Repair curb; replace or remove broken planters***
- ***Add lighting to illuminate at night***



# Reflections III (1983) by Paul Granlund

Bronze sculpture and the pond and fountain

Locate at 800 Main St. by the north entrance.

The sculpture is tribute to Carroll McCarty Gundersen, Donated by Dr. Adolph Gundersen.

## **Condition**

*Since the 2012 report, the fountain and pond are no longer in operation and instead function as a planter containing local flora. The sculpture itself is still in excellent condition.*

## **Recommendation**

- **Add lighting to illuminate at night**



## Dancers (2001) by Donna Cuta

Metal work by C and C Machine, Inc.  
Pedestal by Swanson Heavy Moving  
Co. Donated by Isola Laminate System  
Corp & City Vision .

Located at 119 King St. in parking lot.



## Condition

The pedestal is discolored, but the plaque is in good condition.





*Rust occurring at the base of the sculpture where the plates are attached to the concrete base. Rust is showing through the paint on the metal dancers.*



## **Recommendation**

The Pump House and Artspire request that the sculpture be moved

- **Find a suitable location for the sculpture to be relocated**
- **Remove rust and repaint metal**
- **Repair or replace platform**
- **Add lighting to illuminate at night**



# Anidonts (1983) by Luis Arata

Aluminum

Located west of Myrick Park's La  
Crosse St. entrance

## **Condition**

*There is no marker indicating the artist or the  
name of the work.*

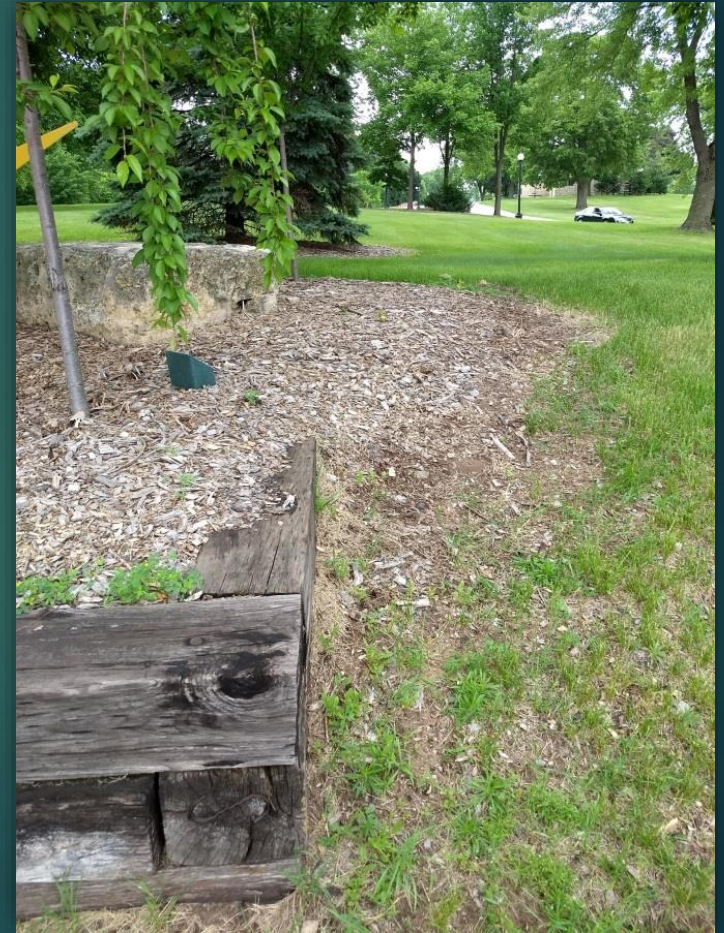


*Paint is peeling. Screws and base plates are rusting*



## Recommendation

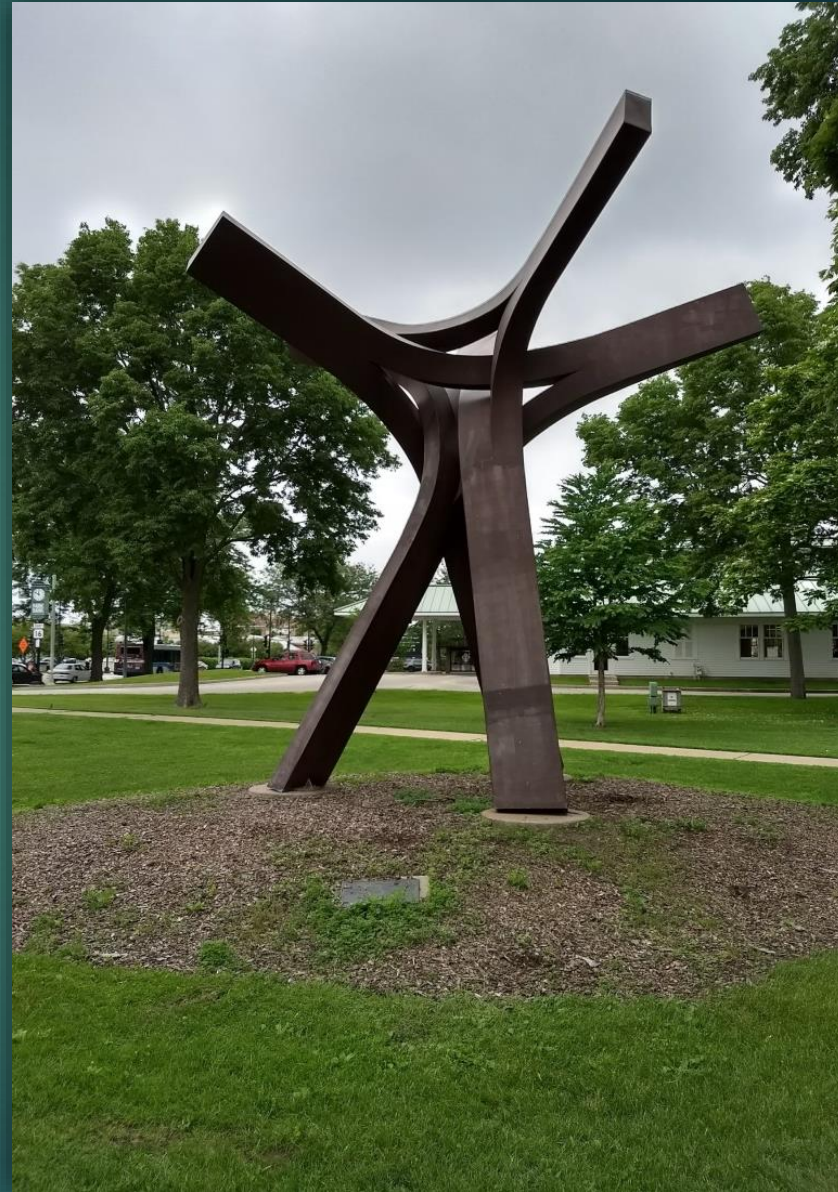
- *Remove rust and repaint metal*
- *Add lighting to illuminate at night*
- *Trim back tree branches to better showcase the sculpture*
- *Clean up wood mulch and landscaping*



Lyra (1980) by Bruce White  
Aluminum

Installed originally at Valley View Mall. Northern Engraving Corporation, The Gelatt Foundation, Inc. The La Crosse Community Foundation, Swanson Heavy Moving, Inc. Moved to current location in 1991, Painted dark brown.

Located in the west side of Burns Park



## Condition

Brown paint is peeling off, bright blue color is showing through. Adjacent trees obscure the sculpture. Weeds are growing among wood chip base



## Recommendations

- **Cut back adjacent tree branches to better showcase the work.**
- **Repaint the original blue** (Arts Board has allocated \$3500 of the funding necessary for the repainting)
- **Install lighting to illuminate the sculpture at night**





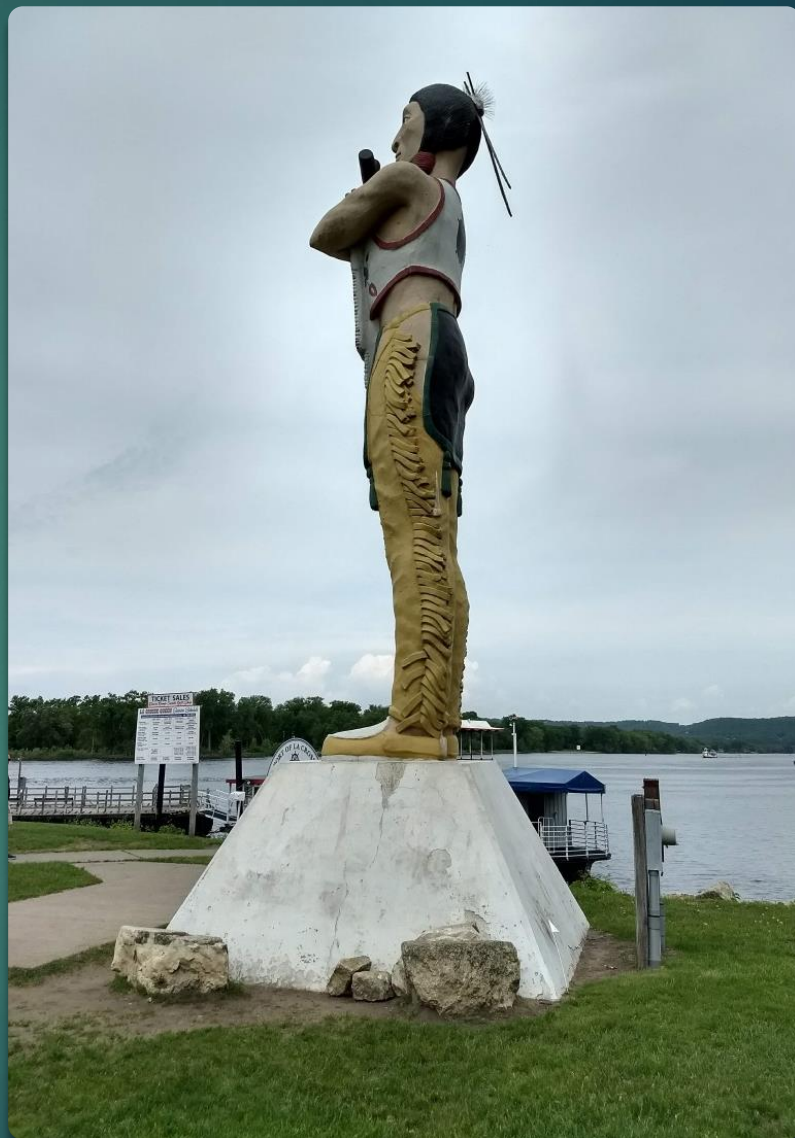
Hiawatha (1962) by Anthony Zimmerhaki  
Concrete

Completed with assistance from sons Don, David,  
and Stephan Zimmerhaki

Located at the north end of Riverside Park

**Condition**

*The color of the paint on the sculpture has faded significantly since the previous 2012 report.*



The outer coating of the base is cracked in many places and the sign is heavily tarnished.



*There are numerous spots where the paint has peeled away from the sculpture and significant cracks in the north side as well.*



*The landscaping around the pedestal is patchy and unattractive.*



## **Recommendation**

**No Arts Boards funds should be spent on the maintenance of this statute.** *Repairs in 2001 were over \$35,000. Similar work is needed today, with the cost likely exceeding past repairs. The City has spent tens of thousands of dollars to maintain and repair the statue since its installation despite assurances that no tax dollars would be used.*



## Le Pinau

(Boy removing splinter from foot)

A symbol of friendship between La Crosse and Sister City, Epinal, France.

Supported by City Vision 2010, Charles and Sue Gelatt, Phillip Gelatt, Dick Record and Family, Gail K. Cleary Family, Nettie O. Mooney and Family, Dacia and David L. Morris, Coulee Bank, Diane Sayler and the Epinal Committee.

Located on a small platform overlooking the circulating fountain on the west side of 2nd Street at Main Street.





**Condition**  
Very good



**Recommendation**

- Clean sculpture base and inspect masonry
- Consider lighting to illuminate at night

The Players (1980) by Elmer Petersen  
Cor-Ten steel.

Dedicated in memory of Frank and  
Elizabeth Stern by Wald Stern.  
Architecture and engineering services  
donated by HSR Associates, 1980.

Located on the west side of 2nd Street at  
Main Street





## Condition

Very good

## Recommendation

- Clean plaque



A Simpler Time (2006) by Mike  
Martino  
Bronze

Located in Riverside Park

Inspired by a photograph by Theresa Smerud. Donated by the City Vision Endowment, with contributions from Sue Conner Gelatt and Liz Goli Ranger in honor of their Great Grandfathers, Will Ott and John Kutz Borsky. Additional contributors inscribed on the 18' x 40' walkway.

**Condition** Very good

