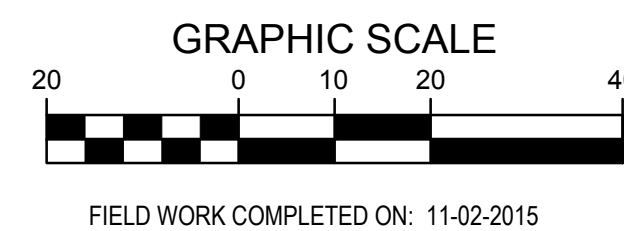
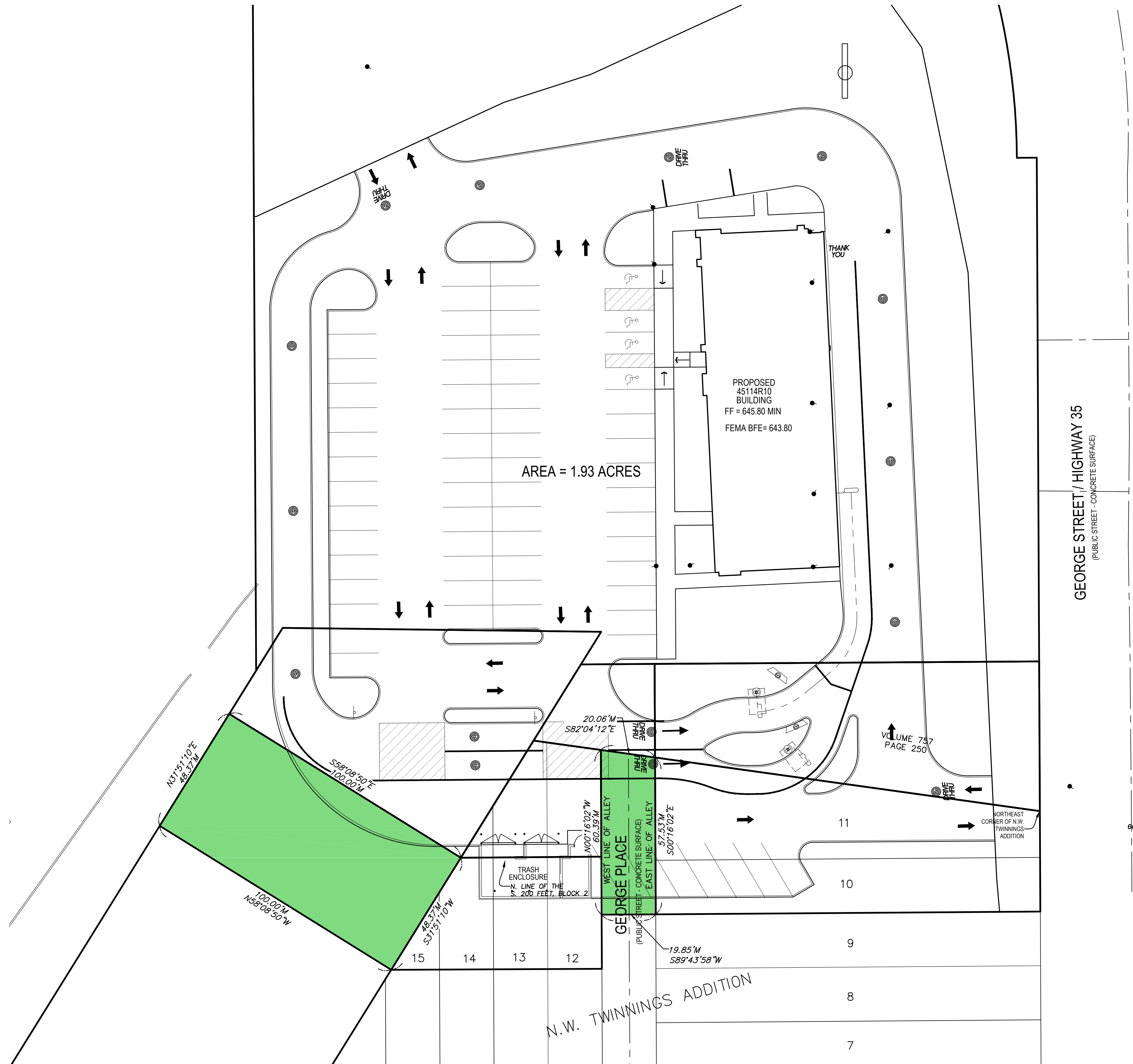


McDONALD'S - LA CROSSE, WISCONSIN - S.W. GEORGE STREET

ACQUISITION DESCRIPTIONS



- ABBREVIATIONS:**
- AC ACRES
 - ASPH ASPHALT
 - BK BOOK
 - CONC CONCRETE
 - D DEEDED DISTANCE
 - EX EXISTING
 - ENCL ENCLOSURE
 - FF FINISHED FLOOR
 - FL FLOW LINE
 - FRAC FRACTIONAL
 - M MEASURED DISTANCE
 - MH MANHOLE
 - OPC ORANGE PLASTIC CAP
 - P PLATTED DISTANCE
 - PG PAGE
 - POB POINT OF BEGINNING
 - POC POINT OF COMMENCEMENT
 - R RECORDED
 - PUE PUBLIC UTILITY EASEMENT
 - ROW RIGHT OF WAY
 - RPC RED PLASTIC CAP
 - SF SQUARE FEET
 - SAN SANITARY
 - YPC YELLOW PLASTIC CAP
 - N NORTH
 - S SOUTH
 - E EAST
 - W WEST
 - PID PROPERTY ID PER CITY OF LA CROSSE GIS WEBSITE

COPYRIGHT 2016 BISHOP ENGINEERING. THIS DOCUMENT AND THE INFORMATION CONTAINED MAY NOT BE REPRODUCED OR EXCERPTED WITHOUT THE EXPRESS WRITTEN PERMISSION OF BISHOP ENGINEERING AND TROSEN LAND SURVEYING, LLC. UNAUTHORIZED COPYING OR DISCLOSURE OF CONSTRUCTION USE ARE PROHIBITED BY COPYRIGHT LAW.

10/4/2016 8:33:57 AM M:\LAND PROJECTS\2012\120207 LA CROSSE, WI - GEORGE ST\DWG\2ND ACQUISITION DRAWINGS.DWG

SHEET NO.	1 OF 1	
	BE# 120207	
TITLE	LA CROSSE, WI SITE PLAN ACQUISITION DRAWING	
DRAWN BY	MJH	
BID ISSUE DATE	12/07/15	
REVIEWED BY	JEL & SCT	
DATE ISSUED	12/07/15	
SITE ADDRESS	1140 W GEORGE ST, LA CROSSE, WI 54601	
SITE ID	480538	
PREPARED FOR:	<p>© 2015 McDonald's USA, LLC These drawings and specifications are the confidential and proprietary property of McDonald's USA, LLC and shall not be copied or reproduced without written authorization. The contract documents were prepared not suitable for use on a different site or at a later time. Use of these drawings for reference or example on another project requires the contract documents for reuse on another project is not authorized.</p>	
PREPARED BY:	<p>Bishop Engineering Training Your Successful Development 3501 104th Street Des Moines, Iowa 50323-5825 Phone: 515-281-4646 Fax: 515-281-0127 Civil Engineering & Land Surveying Established 1999</p>	
REV	0	DATE
DESCRIPTION		