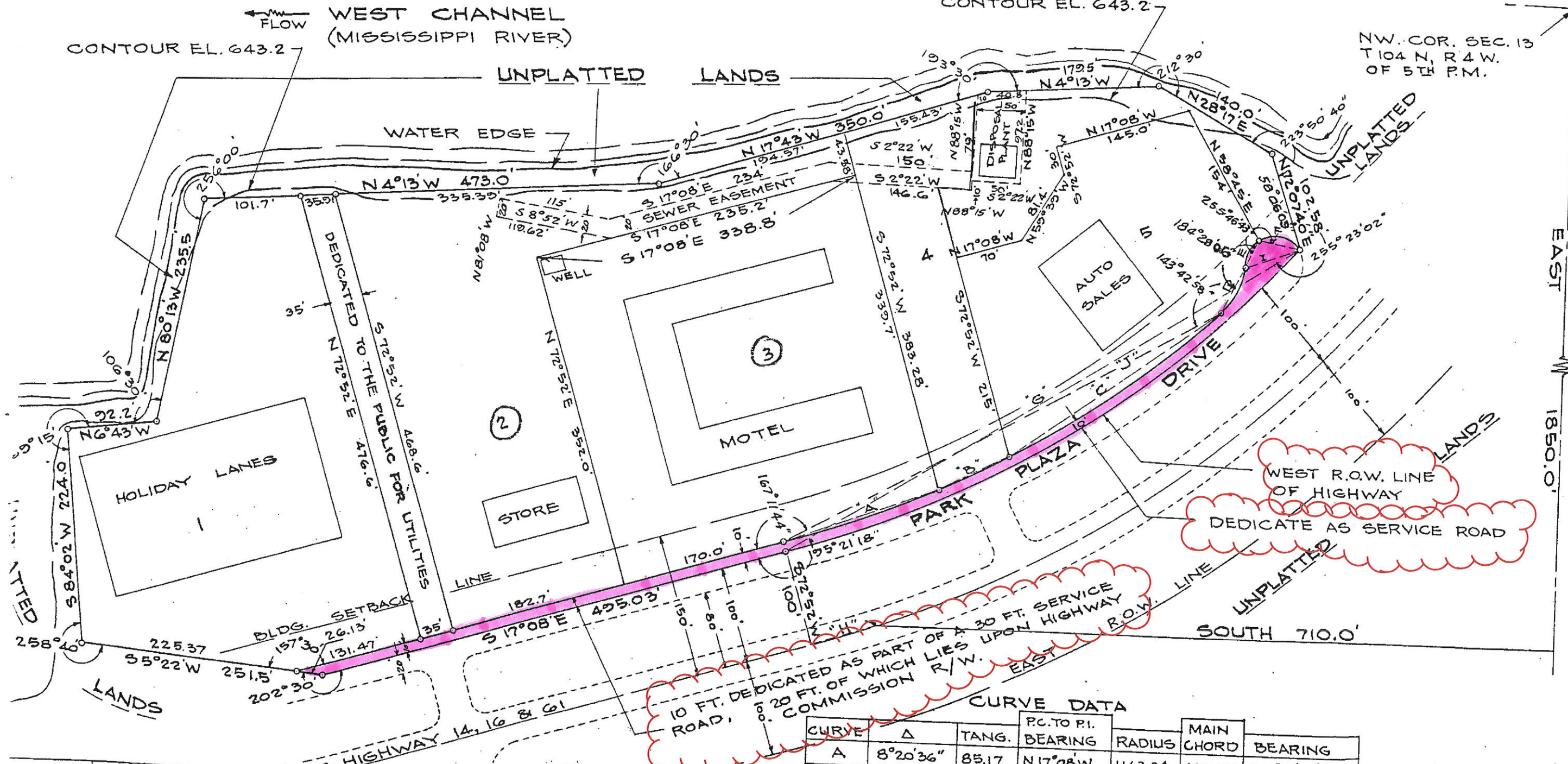


WATER ELEV. ON DATE OF SURVEY 630.32

MAX. HIGH WATER LEVEL EL. 641.13  
 NORMAL WATER LEVEL EL. 630.43  
 U.S.G.S. DATUM, 1929 ADJUSTMENT.  
 CONTOUR EL. 643.2

LA CROSSE CITY LIMITS  
 CENTERLINE OF THE WEST  
 CHANNEL, MISSISSIPPI RIVER.

NW. COR. SEC. 13  
 T104 N, R4 W.  
 OF 5TH P.M.

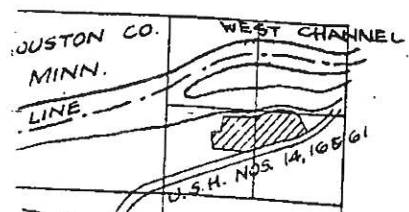


WEST R.O.W. LINE  
 OF HIGHWAY  
 DEDICATE AS SERVICE ROAD

10 FT. DEDICATED AS PART OF A 30 FT. SERVICE ROAD, 20 FT. OF WHICH LIES UPON HIGHWAY COMMISSION R/W. EAST R.O.W. LINE

CURVE DATA

CURVE	Δ	TANG.	P.C. TO P.I. BEARING	RADIUS	MAIN CHORD	BEARING
A	8°20'36"	85.17	N17°08'W	1163.24	169.25	N21°18'18"W
B	3°58'	40.27	N25°28'36"W	1163.24	80.52	N27°27'36"W
C	13°17'56"	135.61	N29°26'36"W	1163.24	269.38	N36°05'34"W
D	46°57'32"	31.38	N42°44'32"W	72.25	57.56	N66°13'18"W
E	55°53'44"	15.92	N89°42'04"W	30.00	28.12	N61°45'12"W
F	95°39'42"	33.12	N32°18'20"W	30.00	1.12	N61°45'12"W



2" x 30" IRON PIPE STAKES 3.65# / LIN. FT. AT ALL EXTERIOR BOUNDARY CORNERS AND...