



GREAT LAKES CHEESE

WASTEWATER TREATMENT BUILDING

2200 ENTERPRISE AVENUE

LA CROSSE, WI 54603

PLAN COMMISSION REVIEW

RELEASED: MAY 23, 2018

DRAWING LIST

• DENOTES DRAWINGS INCLUDED WITH RELEASE / PACKAGE

- ARCHITECTURAL**
- A0.000 ARCHITECTURAL COVER SHEET
 - A0.100 CODE COMPLIANCE INFORMATION SHEET
 - A1.100 OVERALL GROUND FLOOR FACILITY REFERENCE PLAN
 - A1.101 GROUND FLOOR PLAN
 - A3.000 EXTERIOR ELEVATIONS
 - A4.000 OVERALL ROOF PLAN
 - A4.101 ENLARGED ROOF PLAN
 - A4.200 ROOF DETAILS
 - A5.000 ROOM FINISH SCHEDULE / DOOR and FRAME SCHEDULE & DETAILS
 - A8.000 BUILDING SECTIONS
- ARCHITECTURAL CONT.**
- A10.001 ARCHITECTURAL SPECIFICATIONS - SHEET 1
 - A10.002 ARCHITECTURAL SPECIFICATIONS - SHEET 2
 - A10.003 ARCHITECTURAL SPECIFICATIONS - SHEET 3
 - A10.004 ARCHITECTURAL SPECIFICATIONS - SHEET 4
 - A10.005 ARCHITECTURAL SPECIFICATIONS - SHEET 5
 - A10.006 ARCHITECTURAL SPECIFICATIONS - SHEET 6
 - A10.007 ARCHITECTURAL SPECIFICATIONS - SHEET 7
 - A10.008 ARCHITECTURAL SPECIFICATIONS - SHEET 8
 - A10.009 ARCHITECTURAL SPECIFICATIONS - SHEET 9
 - A10.010 ARCHITECTURAL SPECIFICATIONS - SHEET 10

SYMBOLS / ABBREVIATIONS

	METAL STUD WALLS
	INSULATED METAL PANEL WALLS
	CONCRETE MASONRY UNIT WALLS
	DOOR NUMBER
	ROOM NAME
	ROOM NUMBER
	ROOM TEMPERATURE
	WALL TYPE
	WALL SECTION
	WALL SECTION
	BUILDING SECTION
	BUILDING SECTION
	DETAIL REFERENCE
	INTERIOR ELEVATION SYMBOL
	FLOOR / GRADE ELEVATION MARKER
	WINDOW TYPE

DESIGN TEAM

- ARCHITECT**
THE DENNIS GROUP, LLC
- STRUCTURAL ENGINEER**
THE DENNIS GROUP, LLC
- PLUMBING ENGINEER**
THE DENNIS GROUP, LLC
- ELECTRICAL ENGINEER**
THE DENNIS GROUP, LLC
- MECHANICAL ENGINEER**
THE DENNIS GROUP, LLC
- REFRIGERATION ENGINEER**
THE DENNIS GROUP, LLC
- CONSTRUCTION MANAGER**
THE DENNIS GROUP, LLC

AC	AIR CONDITIONING
AF	ABOVE FINISHED FLOOR
ALUM	ALUMINUM
ARCH	ARCHITECTURAL
BUILD	BUILDING
BLKG	BLOCKING
BTRM	BETWEEN
CL	CENTER LINE
CONST	CONSTRUCTION
CONT.	CONTINUOUS
CLO	CLOSET
CL	CLEAR
CM	CONCRETE MASONRY UNIT
CONC	CONCRETE
CONTR	CONTRACTOR
CPT	CARPET
CT	CERAMIC TILE
DF	DRINKING FOUNTAIN
(E), EX	EXISTING
ED	ELECTRICAL PANEL
EQUIP	EQUIPMENT
FCCO	FLOOR CLEAN-OUT
FD	FLOOR DRAIN
FE	FIRE EXTINGUISHER
FE	FIRE EXTINGUISHER CABINET
FIN	FINISH FLOOR
FOC	FACE OF CONCRETE
FOM	FACE OF FINISH
FOS	FACE OF MASONRY
FS	FLOOR SINK
GB	GRASS BAR
GWB	GYPSPUM WALL BOARD
GYPB	GYPSPUM BOARD
CS	CONCRETE SEALER
LAT	LAY-IN ACOUSTICAL TILE
MRP	MONOLITHIC RESINOUS
HC	HOLLOW METAL
HMR	HARDWARE
HVAC	HOLLOW METAL HEATING, VENTILATING AND AIR CONDITIONING
IMP	INSULATED METAL PANEL
MAX	MAXIMUM
MECH	MECHANICAL
METMTL	METAL MANUFACTURER
MFR	MANUFACTURER
MIN	MINIMUM
NA	NOT APPLICABLE
NT	NOT IN CONTRACT
NIC	NOT TO SCALE
NTS	NOT TO SCALE
OC	ON CENTER
PLYWD	PLYWOOD
PLY	PLYWOOD
PTW	PAPER TIE WIRE
PR	PRESERVED WOOD
PROP	PROPERTY LINE PLATE
REC'D	REQUIRED
RO	ROUGH OPENING
RO	ROUGH OPENING
SC	SOLID CORE
SKIP	SKIP
SKIP	SKIP
STL	STEEL
TD	TRENCH DRAIN
TEL	TELEPHONE
TPD	TOILET PAPER DISPENSER
TPP	TYPICAL
UN	UNLESS OTHERWISE NOTED
UNT	UNTIL COMPOSITION TILE
VER	VERTICAL
W	WITH
W/O	WITHOUT
WD	WOOD

A	05.23.2018	SDP	SDP	PLAN COMMISSION REVIEW	
RELEASE	DATE	BY	APP.	RELEASED FOR...	

GREAT LAKES CHEESE
2200 ENTERPRISE AVENUE
LA CROSSE, WISCONSIN 54603

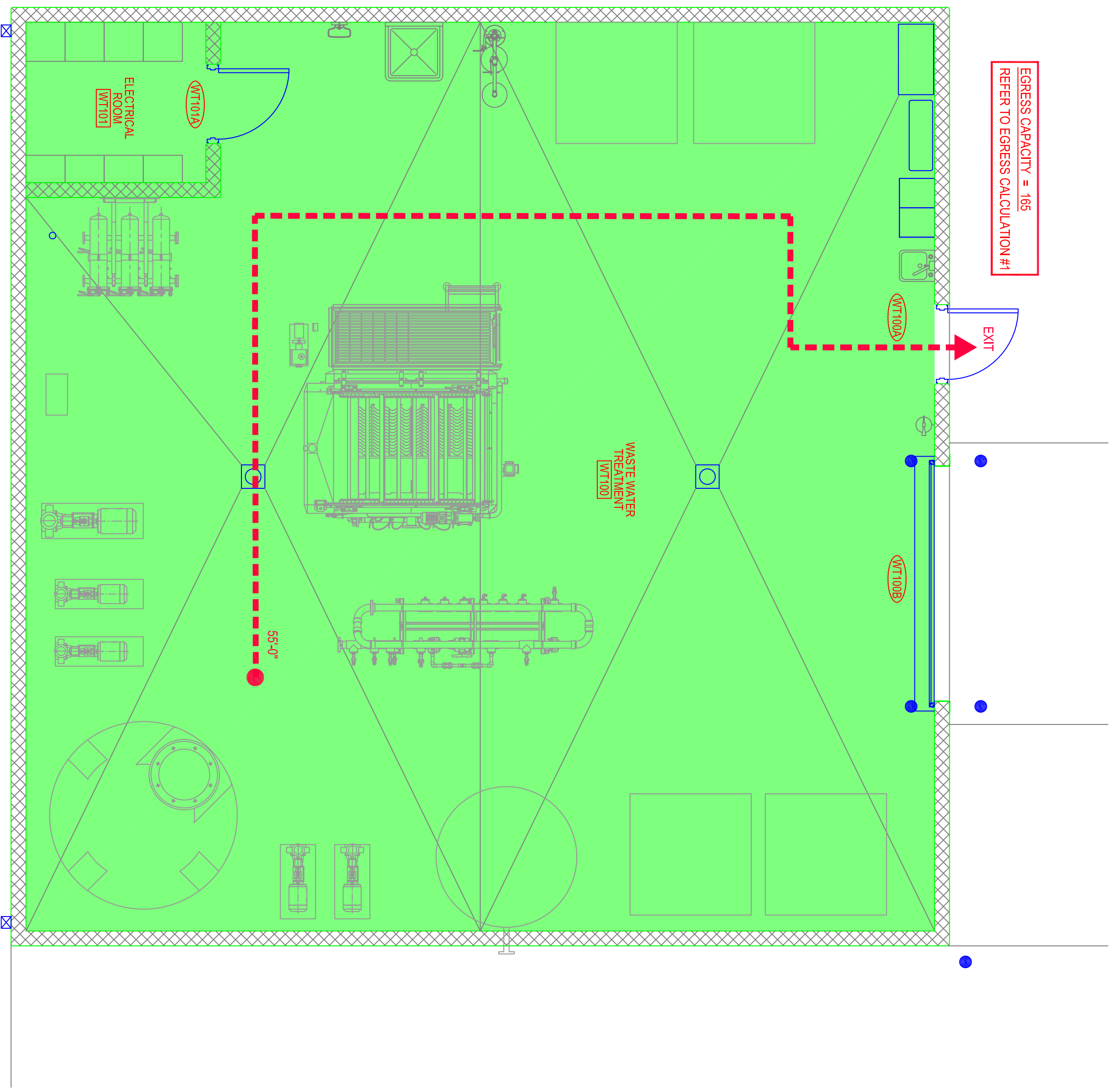
ARCHITECTURAL COVER SHEET

DENNIS GROUP
Plan • Design • Engineer • Build • Start-Up

dennisgroup.com
United States • Canada • Brazil • Portugal

DRAWING NO. **A0.000**

5590



EGRESS CALCULATION #1	EGRESS CAPACITY = 165
ACTUAL UNOBSTRUCTED OPENING WIDTH	EGRESS WIDTH/HER OCCUPANT = CAPACITY
DOOR WIDTH PROVIDED: 33" CLEAR	EGRESS WIDTH: 0/2 (PER SECTION 1006.3.2)

- LEGEND:**
- INDICATES MOST REMOTE LOCATION AND EXIT PATHWAY TO EXIT
 - INDICATES MAX. DISTANCE OF TRAVEL TO EXIT
 - EXIT LOCATIONS
 - E-1 INDUSTRIAL USE and OCCUPANCY CLASSIFICATION
 - WALL / BRACKET MOUNTED FIRE EXTINGUISHER

A GROUND FLOOR PLAN
SCALE: 1/4" = 1'-0"

CHAPTER 6 - CONSTRUCTION CLASSIFICATION TYPE

- TYPE I-B THROUGHOUT
- FIRE RESISTANCE REQUIREMENT FOR BUILDING ELEMENTS = 0 HRS. (PER TABLE 601)
- REQUIRED FIRE RATINGS OF EXTERIOR WALLS = 0 HOURS, NO SIDE WALL LESS THAN 60 FEET. (PER 907.4 & TABLE 602)
- FIRE RESISTANCE RATING FOR TYPE I-B CONSTRUCTION (TABLE 601)

BUILDING ELEMENT	FIRE RATING
STRUCTURAL FRAME	0
BEARING WALLS	
EXTERIOR	0
INTERIOR	0
NONBEARING WALLS	
EXTERIOR	0
INTERIOR	0
NONBEARING WALLS & PARTITIONS	
INTERIOR	0
FLOOR CONSTRUCTION INCLUDING SUPPORTING BEAMS & JOISTS	0
ROOF CONSTRUCTION INCLUDING SUPPORTING BEAMS & JOISTS	0

CHAPTER 9 - FIRE PROTECTION

- FULLY SPRINKLED BUILDING - AUTOMATIC SPRINKLER SYSTEM (PER SECTION 903)
- PERIB 903.4 THE FIRE PROTECTION SYSTEM SWITCHES TRIPPER SWITCHES, PRESSURE SWITCHES, ETC. ARE MONITORED BY THE EXISTING FACILITY'S FIRE ALARM SYSTEM. REFER TO THE ELECTRICAL AND FIRE PROTECTION DRAWINGS FOR ADDITIONAL INFORMATION.
- PORTABLE FIRE EXTINGUISHERS (PER SECTION 906)
- PER FIRE/LEASURES CODE: NFPA-1 2012 (WISCONSIN COMMERCIAL CODE, CHAPTER 314) & NFPA 10
- SMOKE AND HEAT VENTS (PER SECTION 910)
- DESIGN AND INSTALLATION OF SMOKE AND HEAT VENTS SHALL BE IN ACCORDANCE WITH SECTIONS 910.3.1 THROUGH 910.3.3

CHAPTER 10 - MEANS OF EGRESS

MAXIMUM FLOOR AREA ALLOWANCES PER OCCUPANT - OVERALL FACILITY

PER TABLE 1004.1.1	USE	SF / OCC.	AREA SF	CALC. OCC. LOAD	ACTUAL OCC. LOAD
BUSINESS	B	100	10,863	107	42*
FACTORY INDUSTRIAL	F-1	100	48,960	466	50*
STORAGE	S-2	500	107,310	215	25*
FACTORY INDUSTRIAL	F-1	100	1,002	10	0*
FACTORY INDUSTRIAL	F-1	100	1,800	18	0*
TOTAL =				84	117*

* AS PROJECTED BY OWNER (ON LARGEST SHIFT)

- EXIT AND PASSAGEWAYS
- ACCESSIBLE MEANS OF EGRESS COMPLY WITH SECTION 1009
- STAIRS COMPLY WITH SECTION 1011
- RAMP (IF PROVIDED) COMPLY WITH SECTION 1012
- HANDRAILS COMPLY WITH SECTION 1014
- GUARDS COMPLY WITH SECTION 1015

EXIT ACCESS TRAVEL DISTANCE

FACTORY INDUSTRIAL	F-1	115'	N/A	COMMENTS
		WITH APPROVED FIRE SPRINKLER SYSTEM	WITH APPROVED SMOKE VENT SYSTEM	

NUMBER OF EXITS

USE	LOC.	CALC. OCC. RECD.	EXITS PROVIDED	EXITS MULTIPLIER	CAPACITY PROVIDED	MIN. EGRESS WIDTH	EGRESS WIDTH PROVIDED	
BUSINESS	B	107	2	2	0.2	21.4'	99"	
STORAGE	S-2	215	2	11	0.2	42'	363"	
FACTORY	F-1	206	3	5	0.2	107.2'	168"	
FACTORY	F-1	18	1	1	0.2	3.2'	33"	
TOTAL EGRESS WIDTH (TO EXTERIOR ONLY)							167.8'	661"

CHAPTER 11 - ACCESSIBILITY (ICC/ANSI A117.1 ACCESSIBILITY STANDARDS) and ADA STANDARDS FOR ACCESSIBLE DESIGN

- COMPLIES WITH STATE ACCESSIBILITY REQUIREMENTS
- DOOR CLEARANCE DIMENSIONS
- MINIMUM CLEARANCE UNDER DOOR
- FULL SIZE = 36" MINIMUM
- DOOR WIDTH = 2'4" (32") MINIMUM CLEAR OPENING WIDTH
- ACCESSIBLE ROUTE DIMENSIONS
- MINIMUM WIDTH = 36"
- MINIMUM WIDTH AT ANY GIVEN POINT = 32" IF LESS THAN 24" LONG
- PUBLIC ENTRANCES COMPLY WITH SECTION 1105.1
- 60% OF ALL PUBLIC ENTRANCES SHALL BE ACCESSIBLE

CHAPTER 13 - ENERGY EFFICIENCY

- CLIMATE ZONE PER CHAPTER 3 OF THE IECC - ZONE 6A
- ASSIGNED R-VALUES TO CONDITIONED AREAS PER 2015 IECC TABLE 502.2(1):
- EXTERIOR PROCESS AREA WALLS = R-34 (CODE MINIMUM = R-41.4.5)
- ROOF = R-24.2 LTRR (CODE MINIMUM = R-20)
- FOUNDATIONS (ALL AREAS) = R-10 (CODE MINIMUM = R-10 FOR 24" BELOW GRADE)

BUILDING CODE SUMMARY

CLIENT:	GREAT LAKES CHEESE
PROPOSED USE:	WASTE WATER TREATMENT
PROJECT NAME:	WASTE WATER TREATMENT BUILDING
PROJECT LOCATION:	2200 ENTERPRISE AVENUE LA CROSSE, WI 54603
AUTHORIZED AGENT:	THE DENNIS GROUP, LLC JEREMY TOAL, R.A., NCARB - PROJECT ARCHITECT TEL: 413.787.1788 FAX: 413.787.1788 email: Toal@dennisgroup.com
CODE ENFORCEMENT:	WISCONSIN COMMERCIAL BUILDING CODE

- 1. BUILDING CODES:**
- A. WISCONSIN COMMERCIAL BUILDING CODE
 - B. ICC INTERNATIONAL BUILDING CODE: 2015 (WISCONSIN COMMERCIAL BUILDING CODE, CHAPTER SPS 382)
 - C. ACCESSIBILITY: ICC/ANSI A117.1-2015 (AS AMENDED BY WISCONSIN)
 - D. ICC INTERNATIONAL MECHANICAL CODE: 2015 (WISCONSIN COMMERCIAL BUILDING CODE, CHAPTER SPS 384)
 - E. SAFETY CODE: NFPA 1 2012 (WISCONSIN COMMERCIAL CODE, CHAPTERS SPS 314)
 - F. STANDARD FOR THE INSTALLATION OF SPRINKLER SYSTEMS (NFPA-13): 2013
 - G. WISCONSIN PLUMBING CODE (WISCONSIN COMMERCIAL BUILDING CODE, CHAPTERS SPS 381-394)
 - H. ICC INTERNATIONAL FUEL GAS CODE: 2015 (WISCONSIN COMMERCIAL BUILDING CODE, CHAPTER SPS 385)
 - I. NATIONAL ELECTRICAL CODE (NFPA 70): 2011 (WISCONSIN COMMERCIAL BUILDING CODE, CHAPTER SPS 316)
 - J. NATIONAL FIRE ALARM CODE (NFPA-72-07): 2013
 - K. ICC INTERNATIONAL ENERGY CONSERVATION CODE: 2015 (WISCONSIN COMMERCIAL BUILDING CODE, CHAPTER SPS 383)
- ALL CODES INCLUDE WISCONSIN COMMERCIAL BUILDING CODE AMENDMENTS

CHAPTER 3 - USE AND OCCUPANCY CLASSIFICATION (302.1)

NON-SEPARATED MIXED USE PER 508.3.2	EXISTING	NEW
B BUSINESS (304.1)	10,663 SF	N/A
F-1 FACTORY INDUSTRIAL - MODERATE HAZARD (306.2)	50,560 SF	N/A
S-2 LOW HAZARD STORAGE (311.3)	107,310 SF	N/A
F-1 FACTORY INDUSTRIAL - MODERATE HAZARD (306.2)	N/A	1,600 SF
TOTAL =		168,536 SF
COMBINED TOTALS =		170,136 SF

CHEMICAL	HAZARD	QUANTITY
SULFURIC ACID (H ₂ SO ₄) 30% CONCENTRATION	CORROSIVE	275 GAL
SODIUM HYDROXIDE (NAOH) 50% CONCENTRATION	CORROSIVE	275 GAL
TOTAL ALLOWED	CORROSIVE	550 GAL
TOTAL ALLOWED	CORROSIVE	1000 GAL

- PER TABLE 307.1(2) FOOTNOTES B & D AGGREGATE OF 1,000 GAL OF CORROSIVES MAY BE STORED AND USED IN CLOSED SYSTEMS.
- 550 GAL < 1,000 GAL: SPACE NEED NOT BE CLASSIFIED AS HIGH HAZARD GROUP H.
- CHEMICALS TO BE STORED IN TOTES AND DIRECTLY HOOKED UP AND PUMPED IN TO THE INJECTION POINTS.

CHAPTER 5 - GENERAL BUILDING HEIGHTS and AREAS CONSTRUCTION (PER TABLE 503; TYPE IIB)

F-1	3 STORES - 30 FEET	W/ AUTOMATIC SPRINKLER SYSTEM INCREASE: 504.2	ACTUAL
			20'-0"

- BUILDINGS ON THE SAME LOT: SECTION 503.1.2
- WASTEWATER TREATMENT BUILDING WILL BE CONSIDERED AS PORTIONS OF THE MAIN FACILITY.
- AREA LIMITATIONS: UNLIMITED PER SECTION 507.8
- AUTOMATIC SPRINKLER SYSTEM THROUGHOUT: 903.3.1.1
- 60-FOOT WIDE PERIMETER OF PUBLIC WAYS OR YARDS

BUILDING AREAS

8. NEW BUILDING AREA USE GROUP	AREA	AREA	AREA
FACTORY AREA WASTE WATER TREATMENT: F-1	1600 S.F.		
b. TOTAL NEW BUILDING AREA (ALL LEVELS):			1600 S.F.
c. EXISTING BUILDING TO REMAIN (ALL LEVELS)			168,536 S.F.
d. TOTAL BUILDING AREA (NEW AND EXISTING)			170,136 S.F.

RELEASE	DATE	BY	APP.	PLAN COMMISSION REVIEW
	05.23.2018	SDP	SDP	RELEASED FOR ...

GREAT LAKES CHEESE
2200 ENTERPRISE AVENUE
LA CROSSE, WISCONSIN 54603

CODE COMPLIANCE INFORMATION SHEET

DENNIS GROUP
Plan • Design • Engineer • Build • Start-Up

dennisgroup.com
United States • Canada • Brazil • Portugal

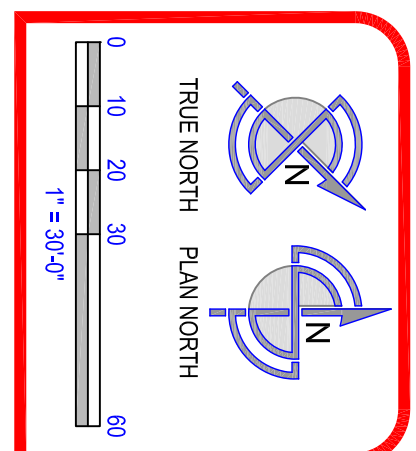
DRAWING NO. A0.100

5590



A OVERALL GROUND FLOOR FACILITY REFERENCE PLAN
SCALE: 1" = 30'-0"

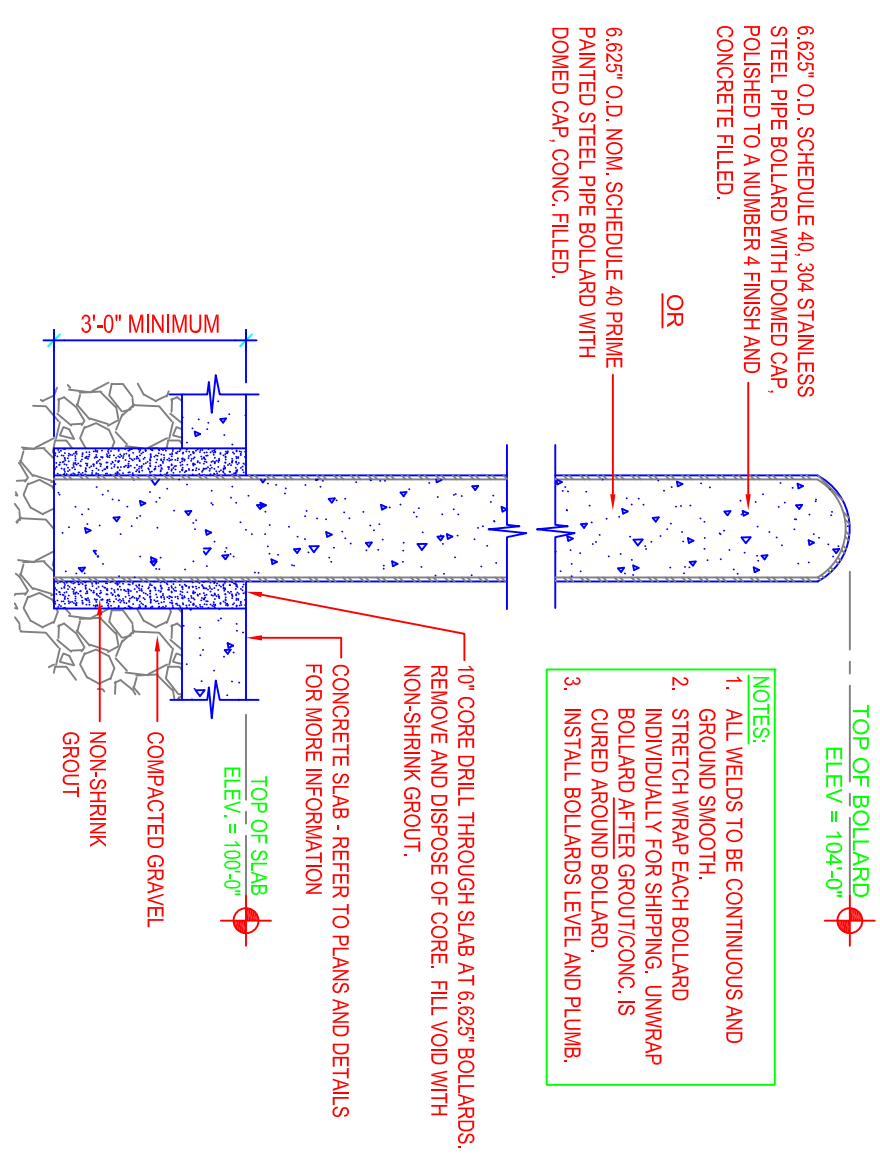
DRAWING NO.
A1.100
5590



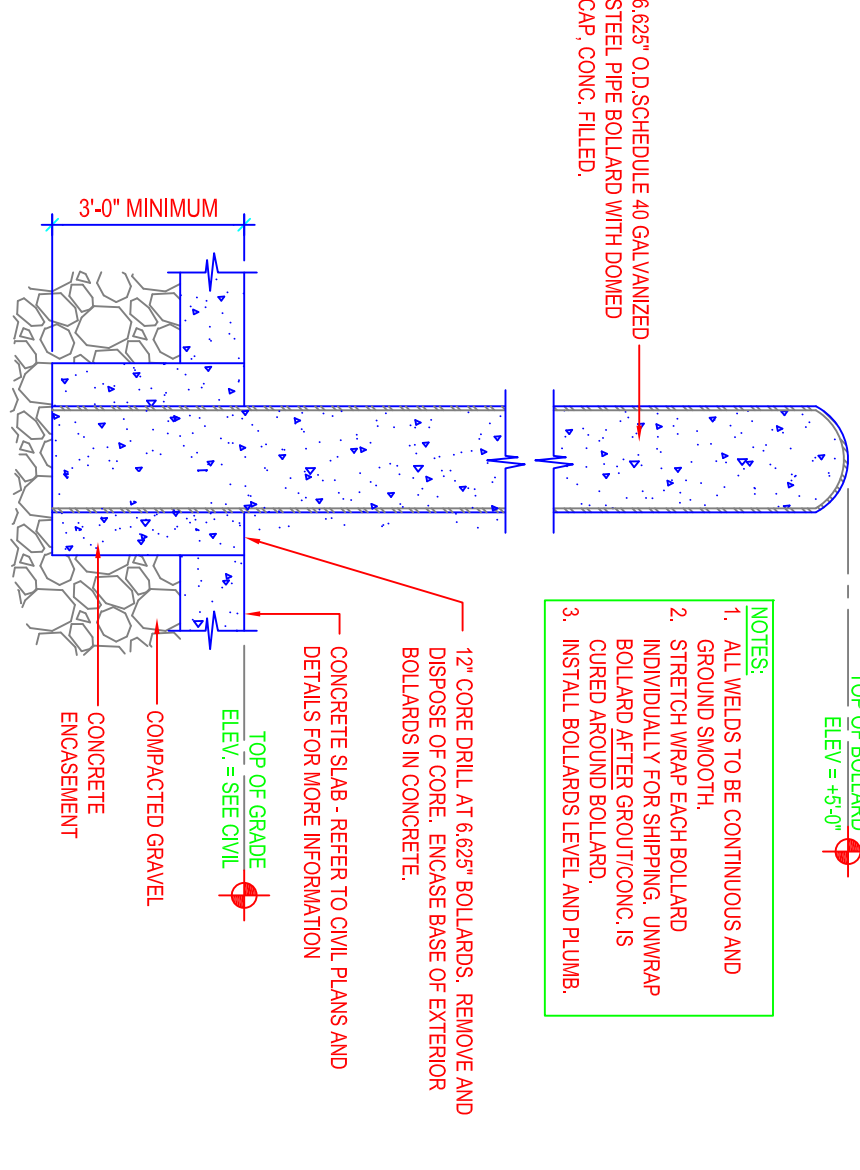
DENNIS GROUP
Plan • Design • Engineer • Build • Start-Up
dennisgroup.com
United States • Canada • Brazil • Portugal

GREAT LAKES CHEESE
2200 ENTERPRISE AVENUE
LA CROSSE, WISCONSIN 54603
OVERALL GROUND FLOOR FACILITY
REFERENCE PLAN

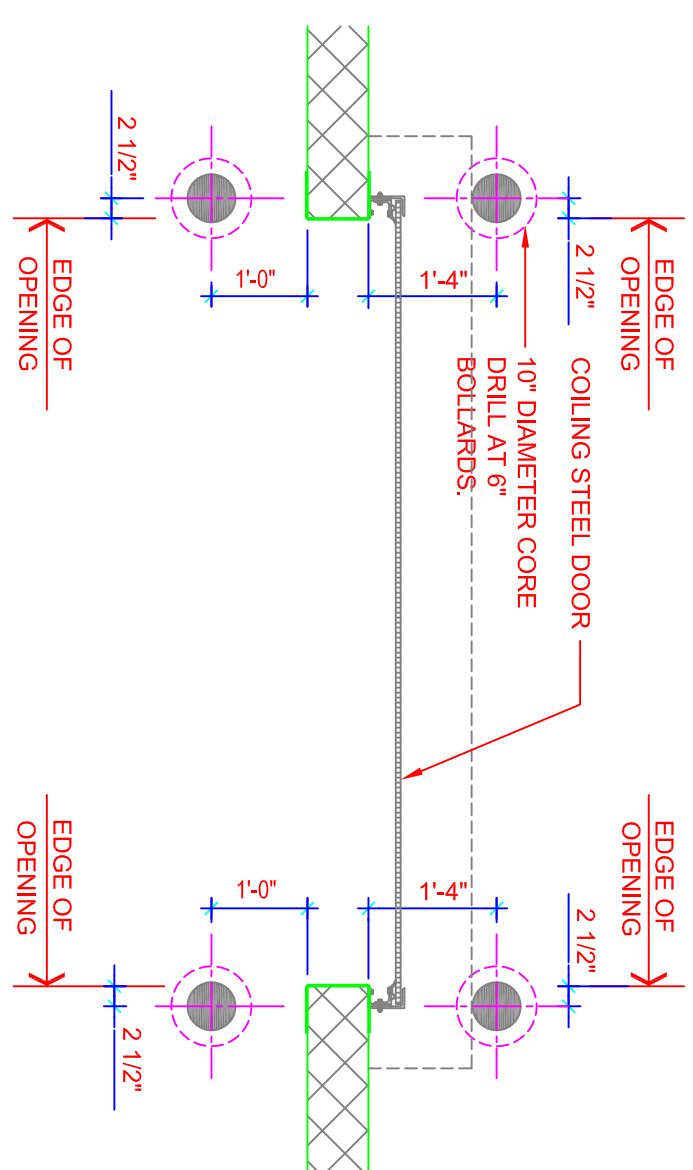
RELEASE	DATE	BY	APP.	RELEASED FOR...
A	05.23.2018	SDP	SDP	PLAN COMMISSION REVIEW



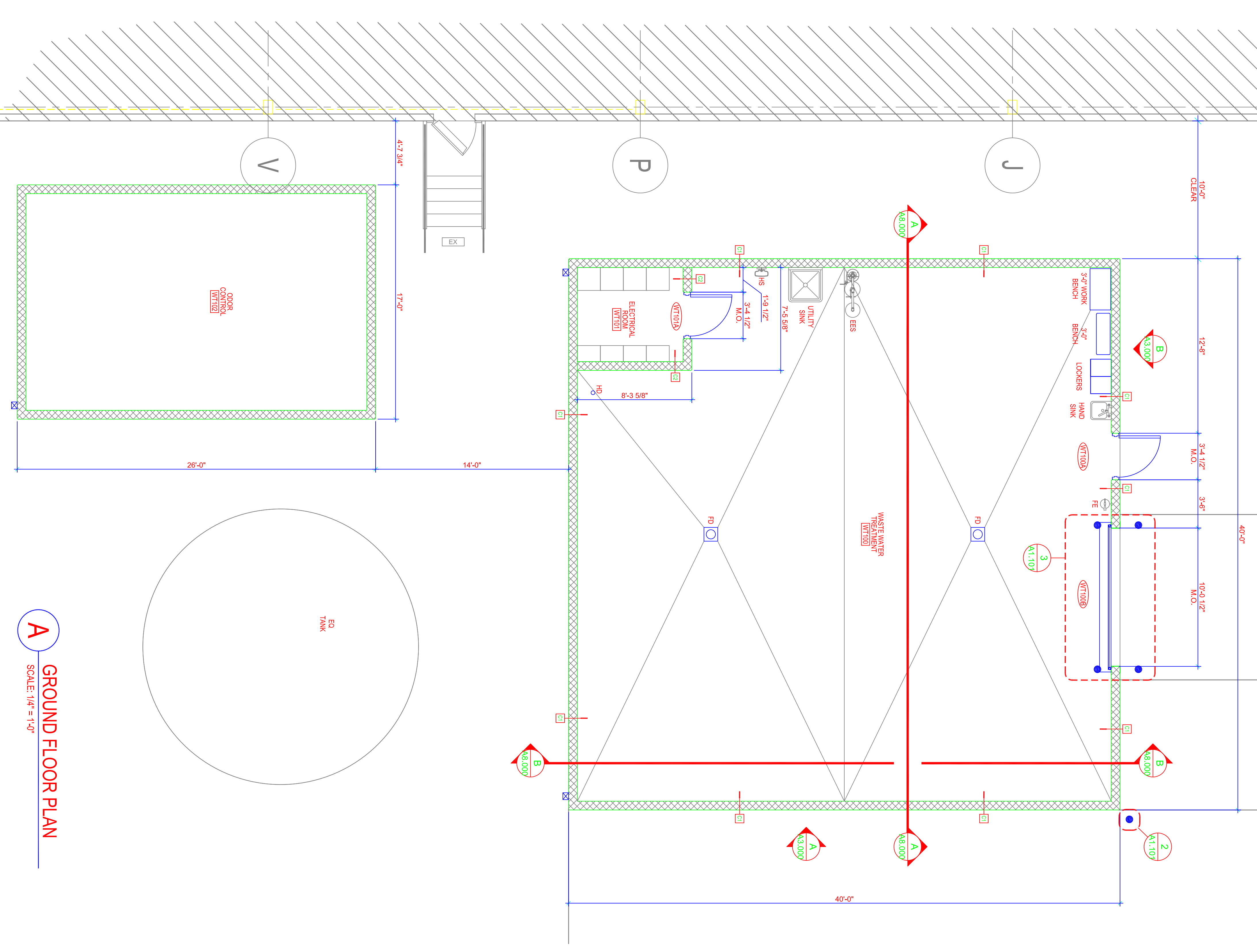
1
SCALE: 1" = 1'-0"



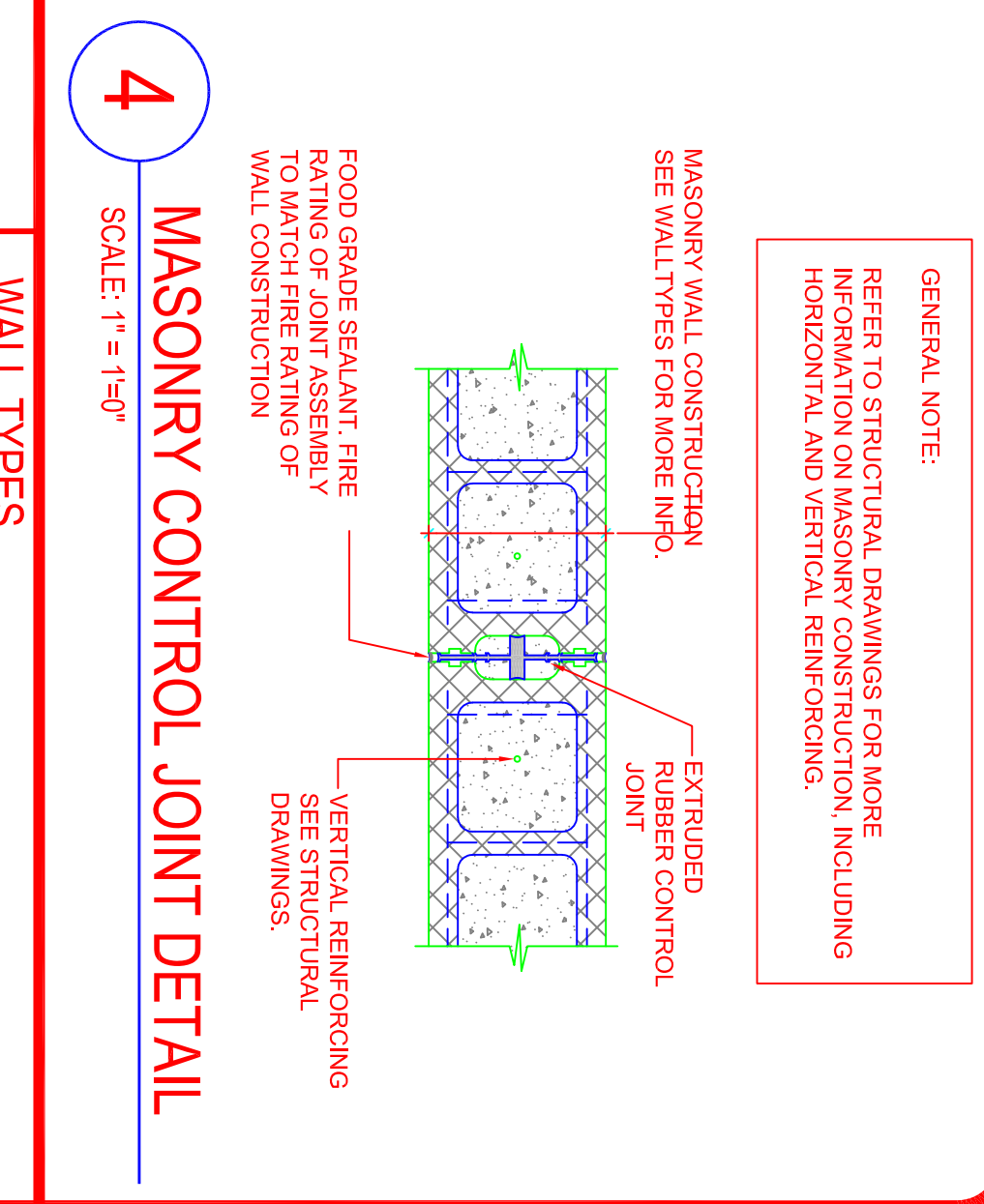
2
SCALE: 1" = 1'-0"



3
SCALE: 1/2" = 1'-0"



A
SCALE: 1/4" = 1'-0"



4
SCALE: 1" = 1'-0"

GENERAL NOTE:
REFER TO STRUCTURAL DRAWINGS FOR MORE INFORMATION ON MASONRY CONSTRUCTION, INCLUDING HORIZONTAL AND VERTICAL REINFORCING.

MASONRY WALL CONSTRUCTION SEE WALL TYPES FOR MORE INFO.
EXTRUDED RUBBER CONTROL JOINT
VERTICAL REINFORCING SEE STRUCTURAL DRAWINGS.

FOOD GRADE SEALANT, FIRE RATING OF JOINT ASSEMBLY TO MATCH FIRE RATING OF WALL CONSTRUCTION

WALL TYPES

C1	8" THICK MASONRY UNIT MASONRY WALL WITH ANCHORS AND DETAILS. REFER TO ELEVATIONS AND STRUCTURAL DRAWINGS FOR MORE INFORMATION.
C2	8" THICK MASONRY UNIT MASONRY WALL WITH ANCHORS AND DETAILS. REFER TO ELEVATIONS AND STRUCTURAL DRAWINGS FOR MORE INFORMATION.

SYMBOLS

- DOOR NUMBER
- ROOM NAME
- ROOM NUMBER
- ROOM TEMPERATURE
- WALL TYPE
- WINDOW TYPE

LEGEND

- THIN STONE VENEER OVER METAL STUDS
- INSULATED METAL PANEL
- INSULATED METAL STUDS
- CONCRETE MASONRY UNIT
- 8x8 OVER METAL STUDS

NOTES

- INDICATES 3/4" FIRE RATED WALL CONSTRUCTION
- ALL WEEDS (SOP) AND FIELD ARE TO BE CONTINUOUS AND GROUND SMOOTH
- FIELD TOUCH-UP SHOP PRIMER AS NEEDED
- ALL MATERIALS SCHEDULED TO BE GALVANIZED. SHALL BE HOT DIPPED AS FINISHED FABRICATED ASSEMBLIES
- FIELD TOUCH-UP GALVANIZED ASSEMBLIES WITH AN PERFORM TOUCH-UP PAINT TO MATCH EXISTING COOR. COLOR. REFER TO COOR. MODEL. CONTROL LOCATIONS WITH CONSTRUCTION NUMBER AND ASSEMBLY IDENT TO PLACING ANY BOLLARDS

KEY PLAN

DRAWING NO.
A1.101

5590

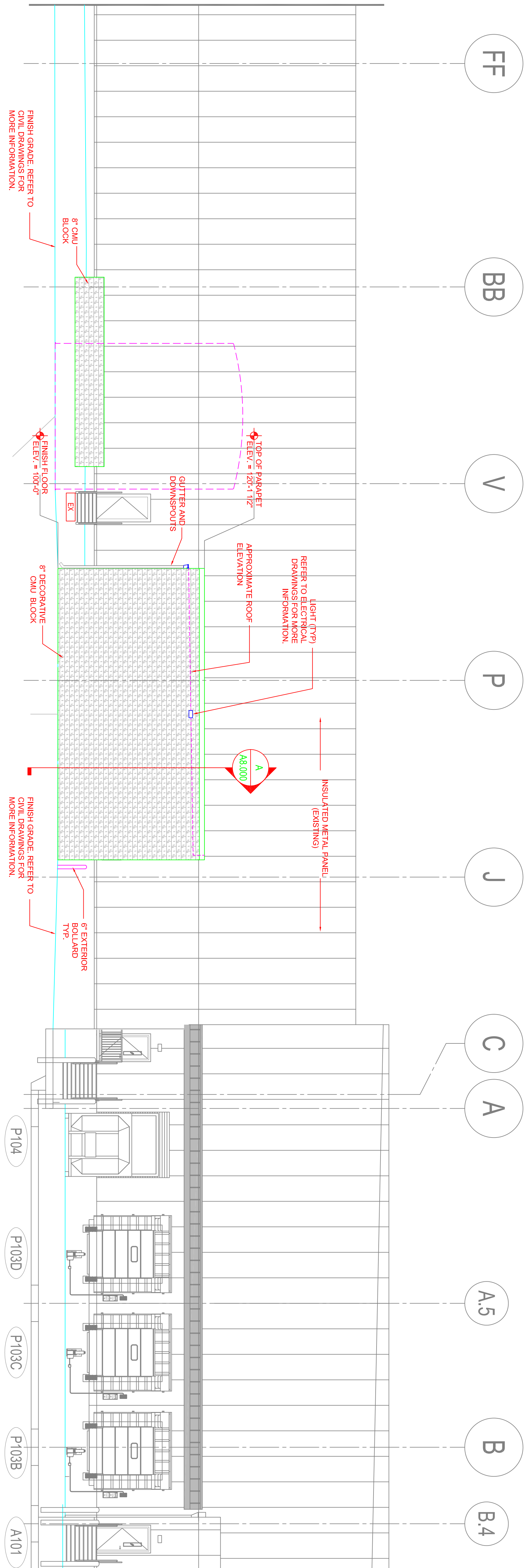
DENNIS GROUP
Plan • Design • Engineer • Build • Start-Up

dennigroup.com
United States • Canada • Brazil • Portugal

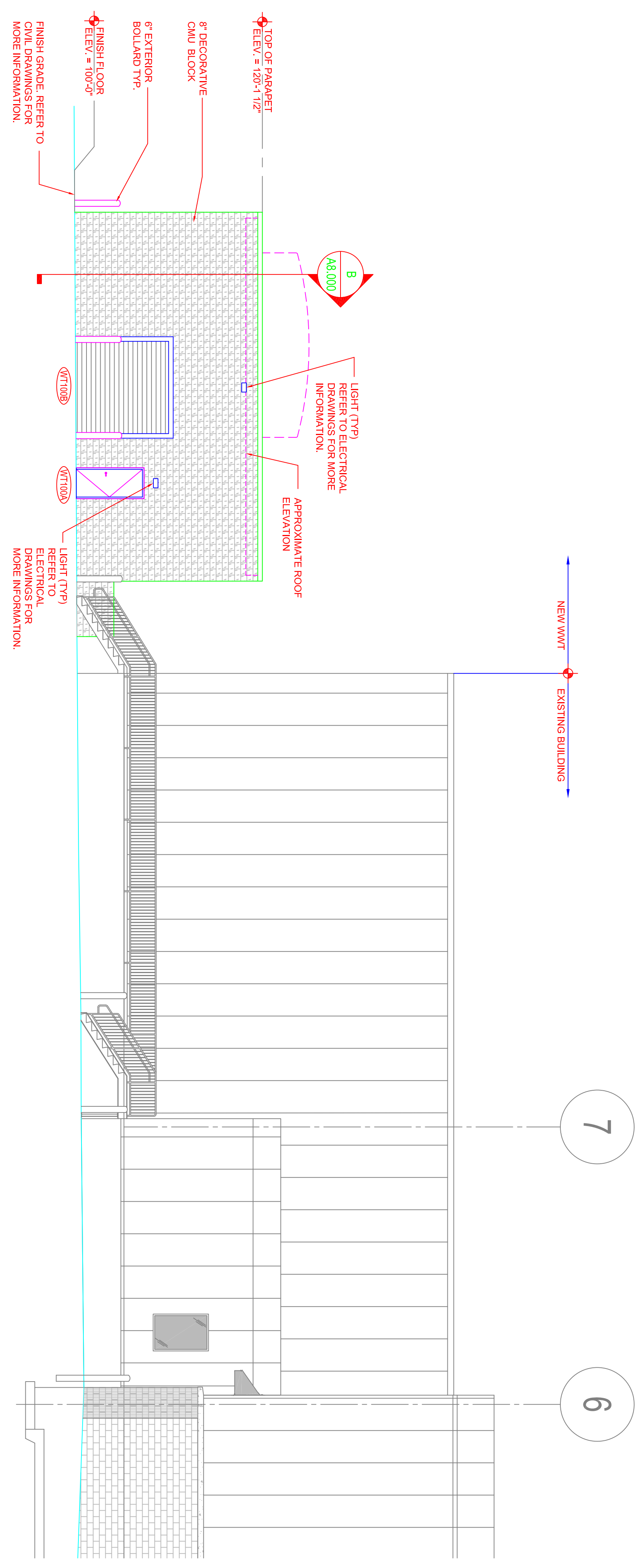
GREAT LAKES CHEESE
2200 ENTERPRISE AVENUE
LA CROSSE, WISCONSIN 54603

GROUND FLOOR PLAN

A	05.223.2018	SDP	SDP	PLAN COMMISSION REVIEW
RELEASE	DATE	BY	APP.	RELEASED FOR...



A
EAST ELEVATION
SCALE: 1/8" = 1'-0"



B
NORTH ELEVATION
SCALE: 1/8" = 1'-0"

RELEASE	DATE	BY	APP.	PLAN COMMISSION REVIEW
A	05.23.2018	SDP	SDP	PLAN COMMISSION REVIEW
				RELEASED FOR...

GREAT LAKES CHEESE
2200 ENTERPRISE AVENUE
LA CROSSE, WISCONSIN 54603

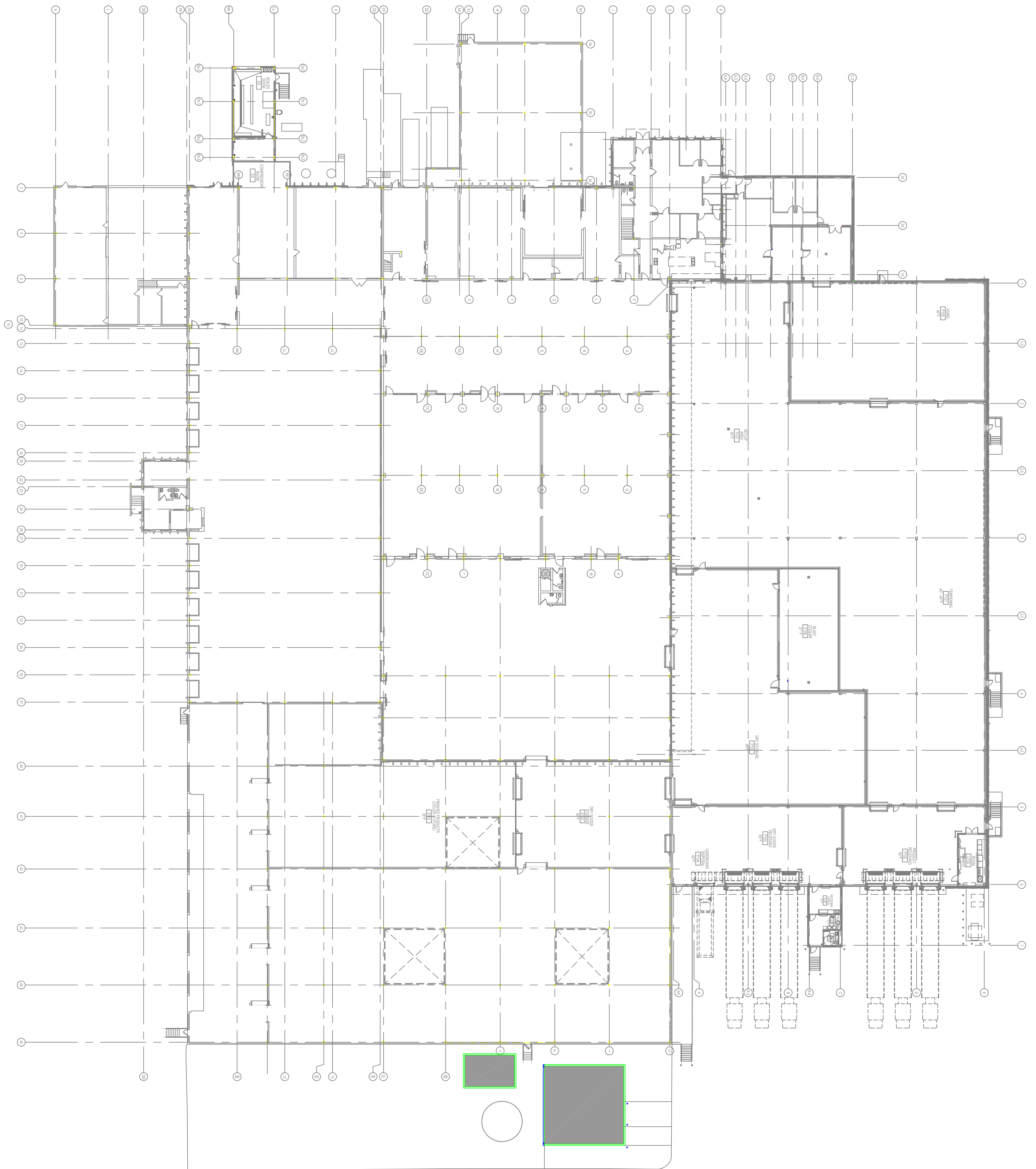
EXTERIOR ELEVATIONS

DENNIS GROUP
Plan • Design • Engineer • Build • Start-Up

dennisgroup.com
United States • Canada • Brazil • Portugal

DRAWING NO.
A3.000

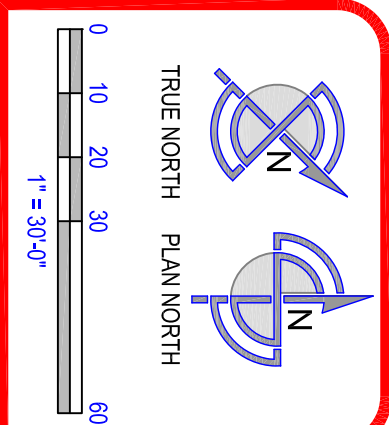
5590



A

OVERALL FACILITY ROOF PLAN
SCALE: 1" = 30'-0"

DRAWING NO.
A4.000
5590



DENNIS GROUP
Plan • Design • Engineer • Build • Start-Up

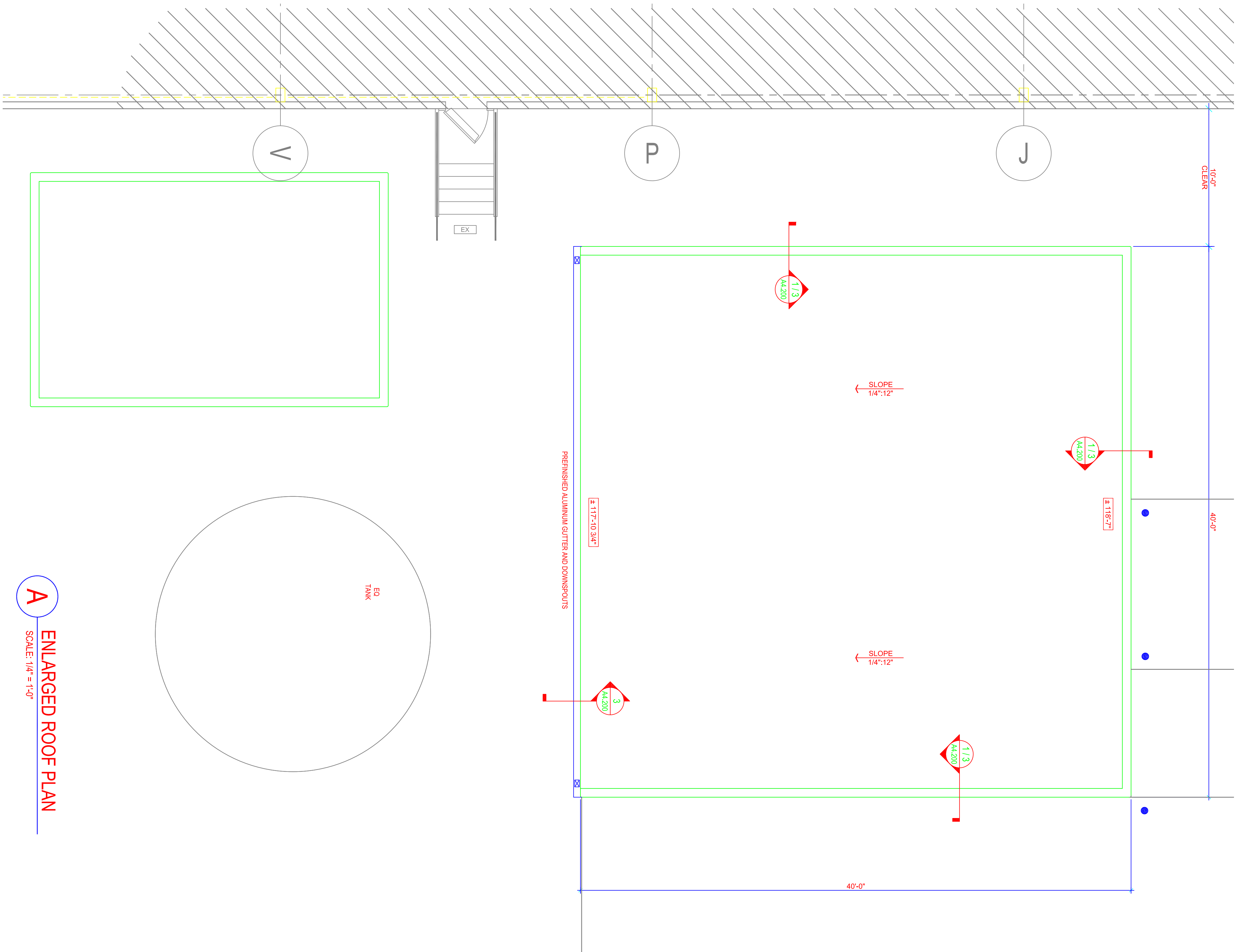
dennisgroup.com
United States • Canada • Brazil • Portugal



GREAT LAKES CHEESE
2200 ENTERPRISE AVENUE
LA CROSSE, WISCONSIN 54603

OVERALL FACILITY
ROOF PLAN

RELEASE	DATE	BY	APP.	RELEASED FOR...
A	05.22.2018	SDP	SDP	PLAN COMMISSION REVIEW

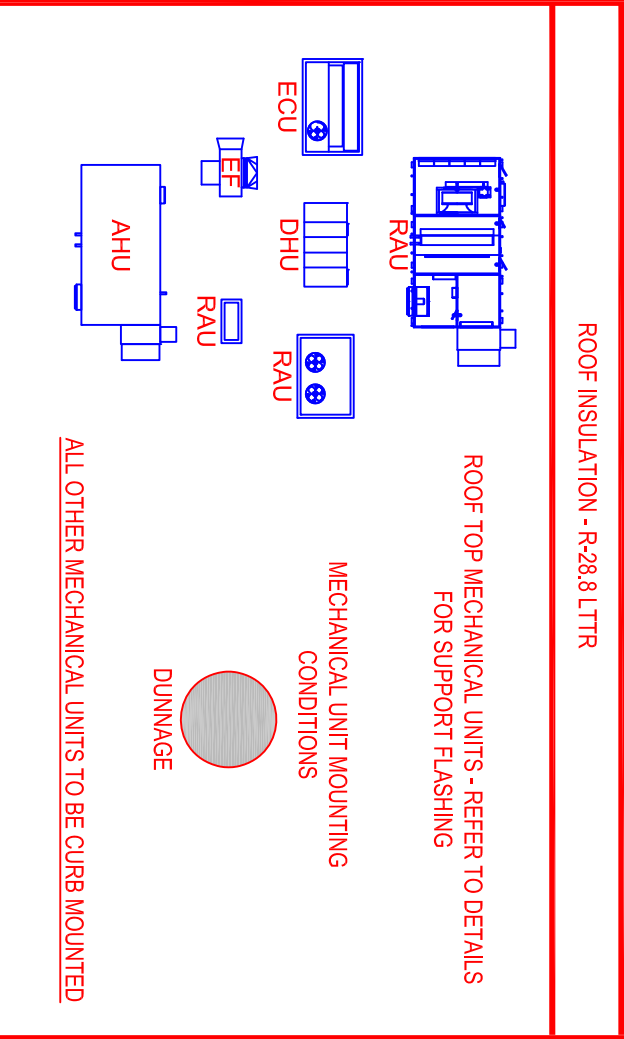


A
ENLARGED ROOF PLAN
SCALE: 1/4" = 1'-0"

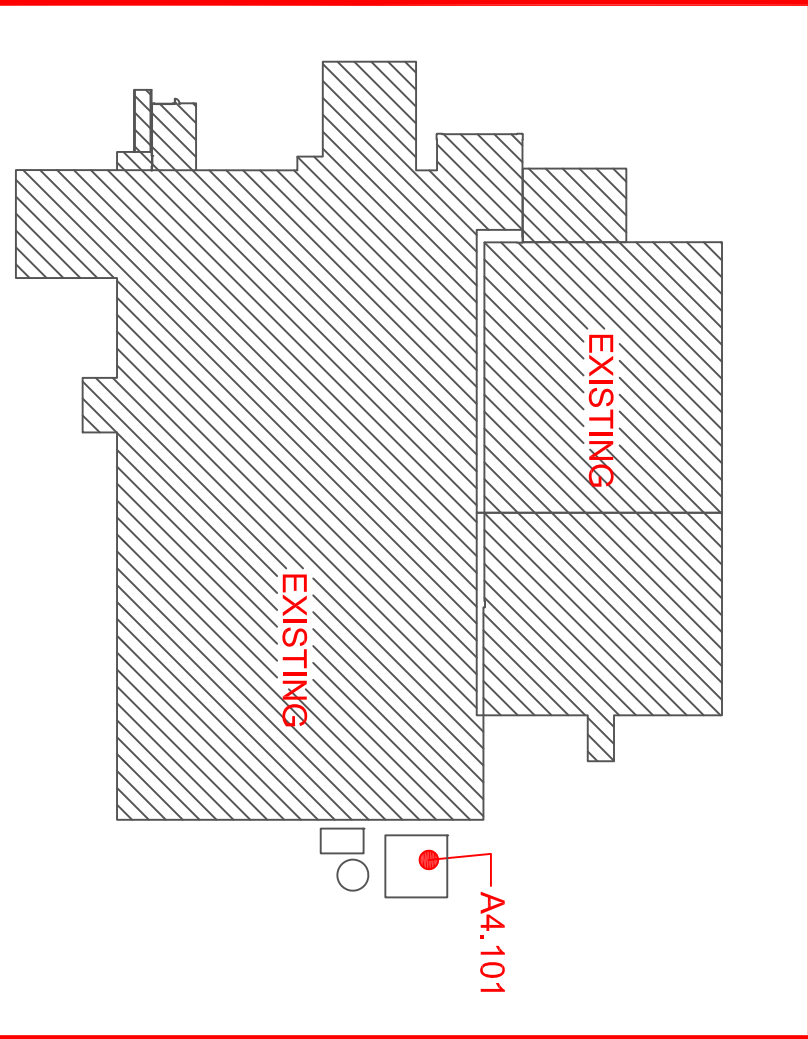
ROOF NOTES

1. TOTAL THICKNESS OF ROOF INSULATION: 2 LAYERS OF INSULATION AT 2-1/2" R-14. LTR EACH LAYER FOR A MINIMUM R-VALUE OF 28.1 LTR. STAGGER ALL INSULATION TO WALL INTERSECTIONS.
2. ROOF MEMBRANE TO BE TREKO BURMASTIC 4-PLY SYSTEM MECHANICALLY FASTENED TO ACHIEVE AN FM GLOBAL 14-90 RATING.
3. ROOFING CONTRACTORS TO CONSULT SPECIFIED MANUFACTURERS STANDARDS DETAILS FOR WARRANTY COMPLIANT INFORMATION OF MEMBRANE AND FLASHINGS.
4. REFER TO ROOF DETAILS FOR FLASHING DETAILS FOR ROOF PENETRATIONS AND CURBS.

LEGEND



KEY PLAN



A	05.23.2018	SDP	SDP	PLAN COMMISSION REVIEW
RELEASE	DATE	BY	APP.	RELEASED FOR...

GREAT LAKES CHEESE
2200 ENTERPRISE AVENUE
LA CROSSE, WISCONSIN 54603

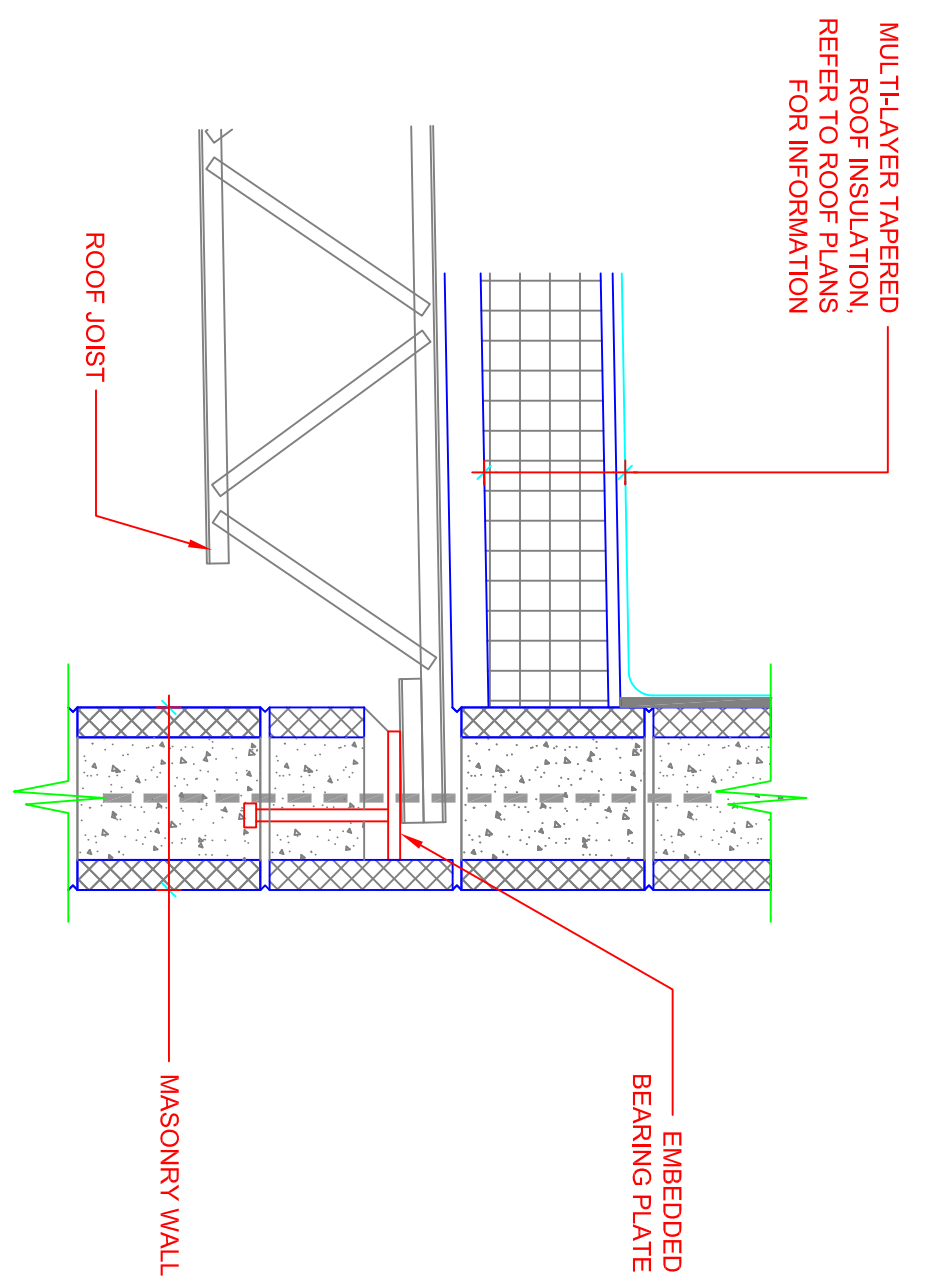
ENLARGED ROOF PLAN

DENNIS GROUP
Plan • Design • Engineer • Build • Start-Up

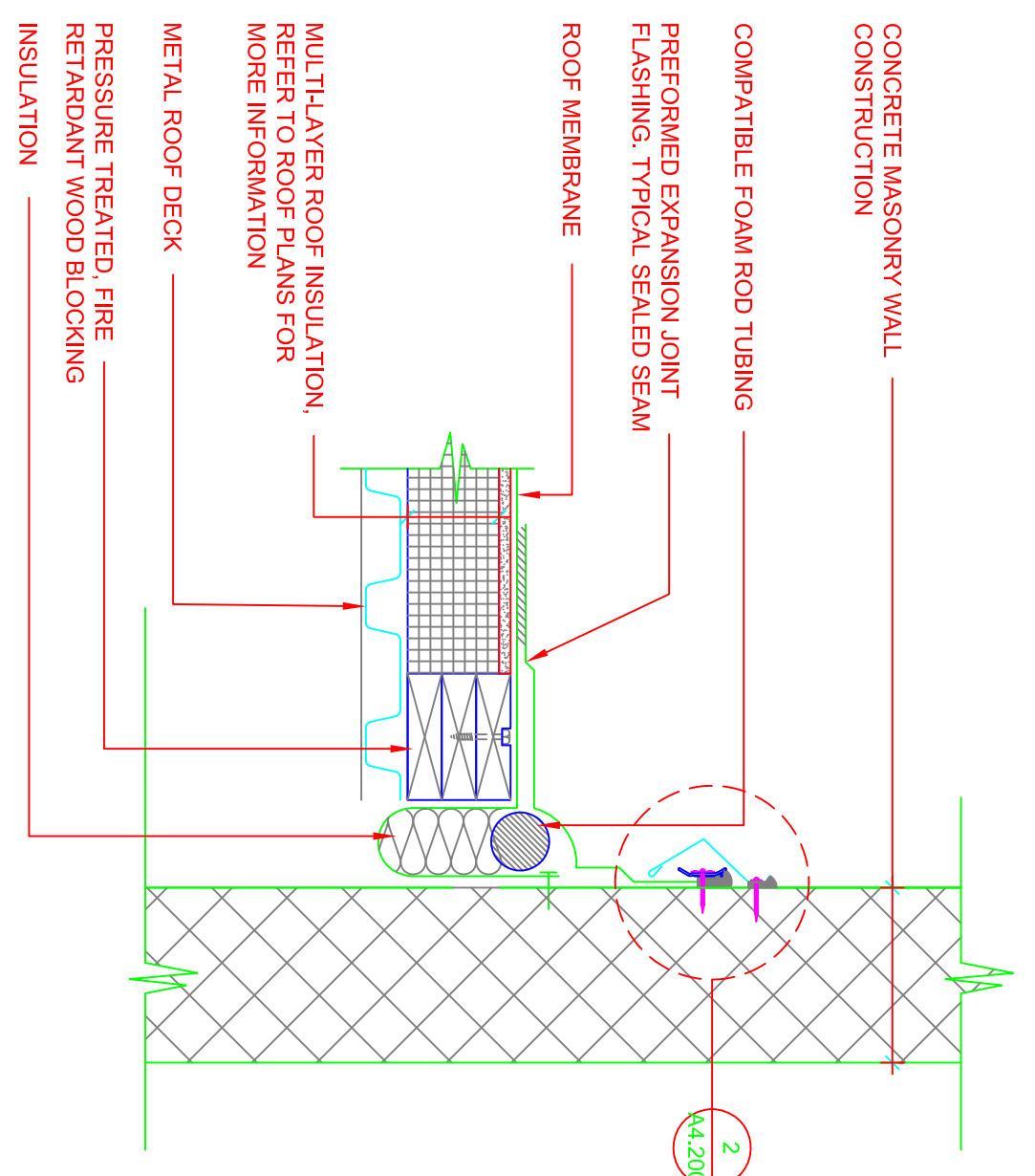
dennisgroup.com
United States • Canada • Brazil • Portugal

TRUE NORTH PLAN NORTH
1/4" = 1'-0"

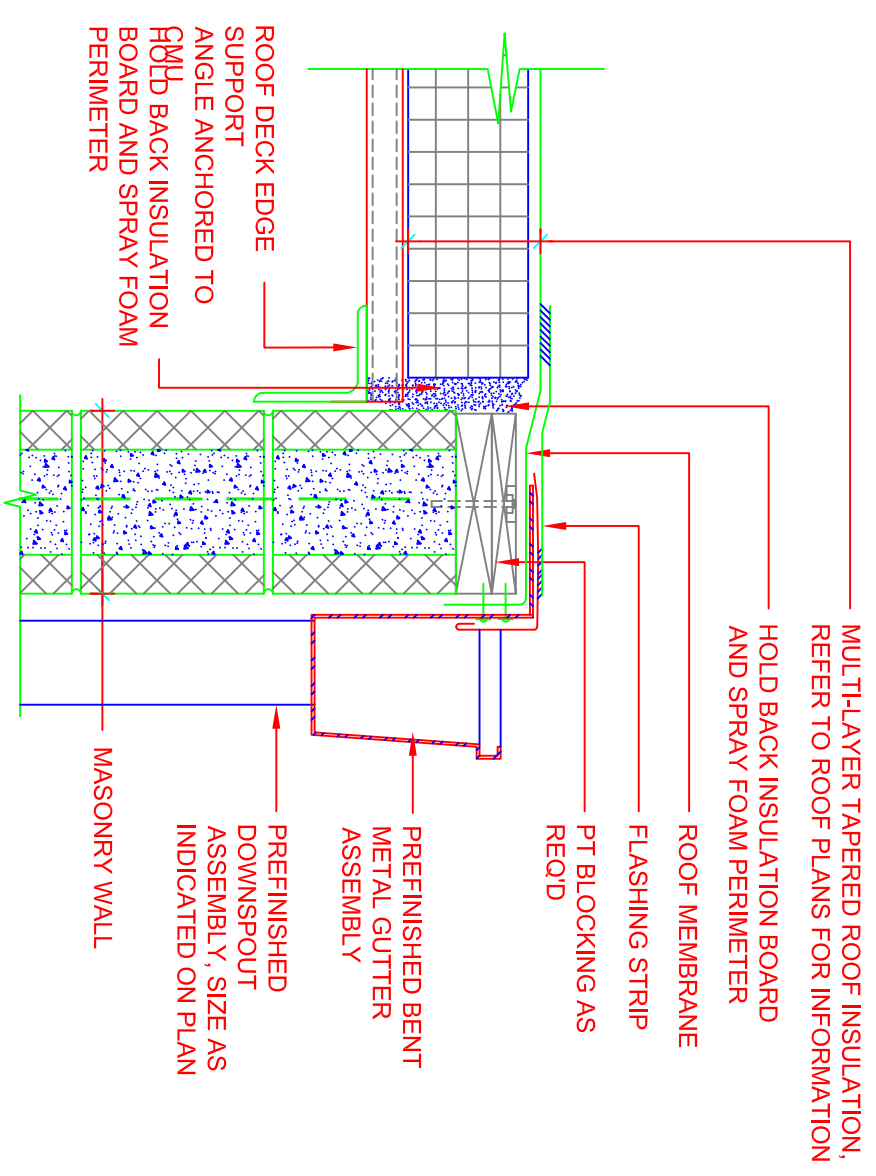
DRAWING NO.
A4.101
5590



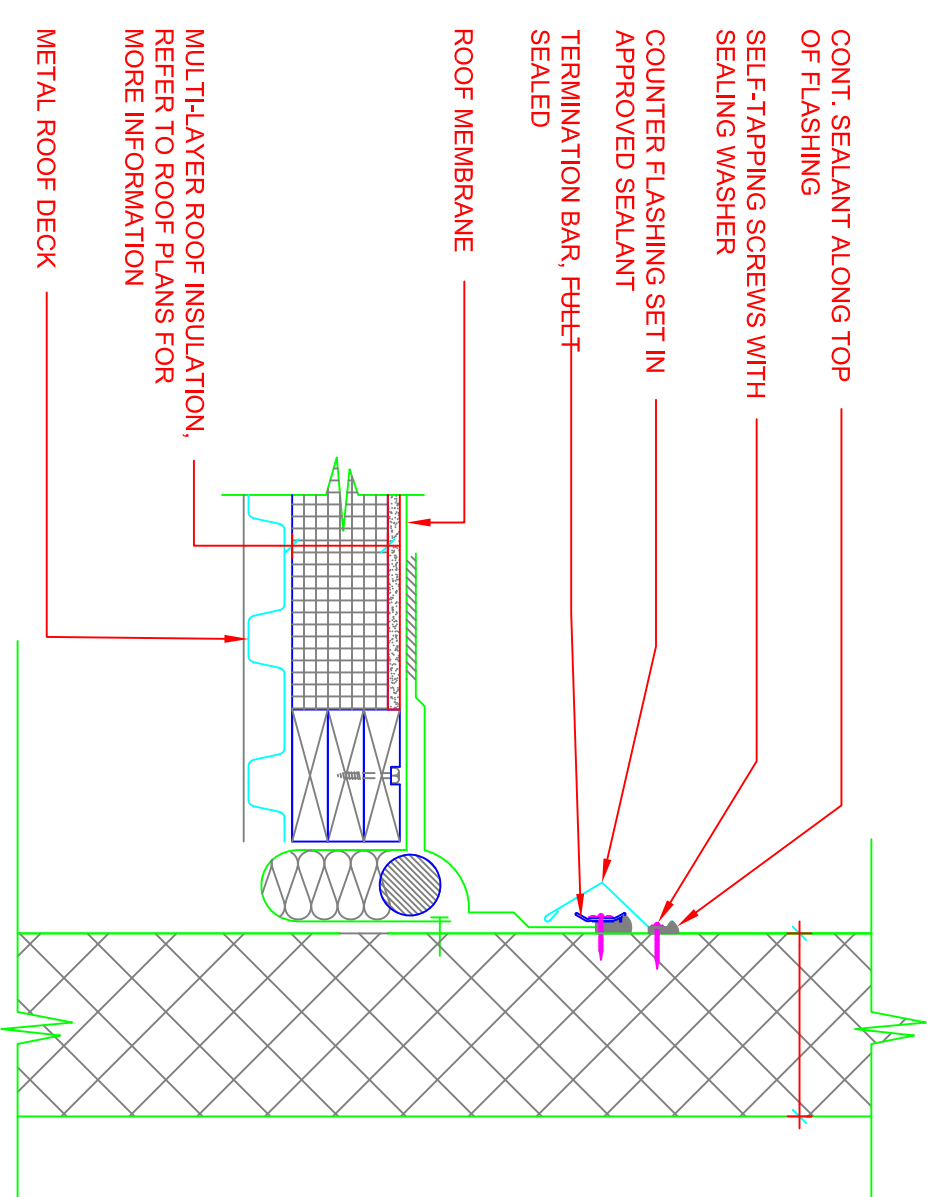
4 ROOF JOIST AT BEARING CMU WALL
SCALE: 1/12" = 1'-0"



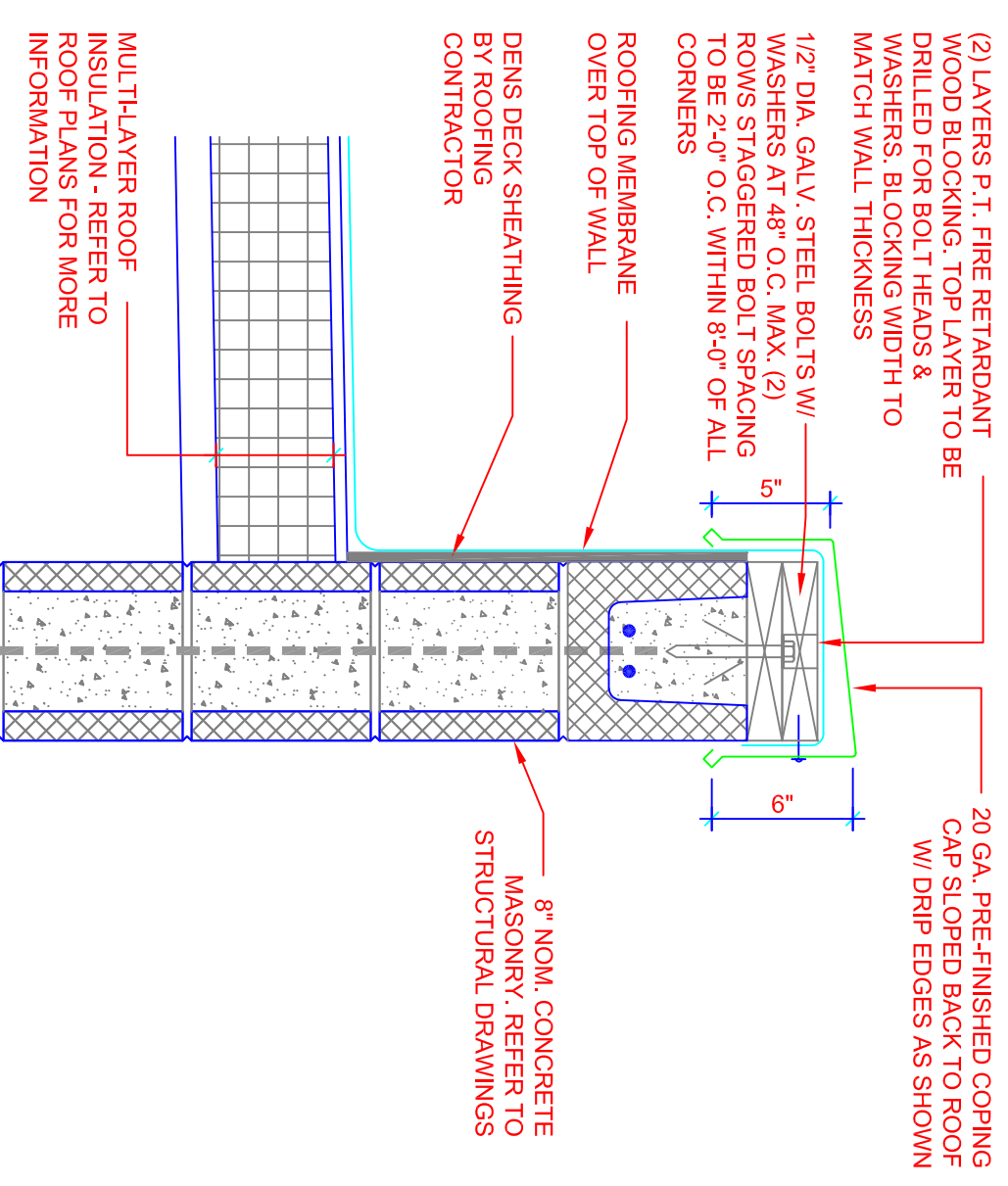
1 EXPANSION JOINT AT CMU WALL
SCALE: 1/12" = 1'-0"



5 GUTTER AT CMU WALL DETAIL
SCALE: 1/12" = 1'-0"



2 FLASHING AT CMU WALL
SCALE: 1/12" = 1'-0"



3 ROOF PARAPET AT CMU WALL
SCALE: 1/12" = 1'-0"

RELEASE	DATE	BY	APP.	RELEASED FOR...
A	05.23.2018	SDP	SDP	PLAN COMMISSION REVIEW



GREAT LAKES CHEESE
2200 ENTERPRISE AVENUE
LA CROSSE, WISCONSIN 54603

**ROOF
DETAILS**

DENNIS GROUP

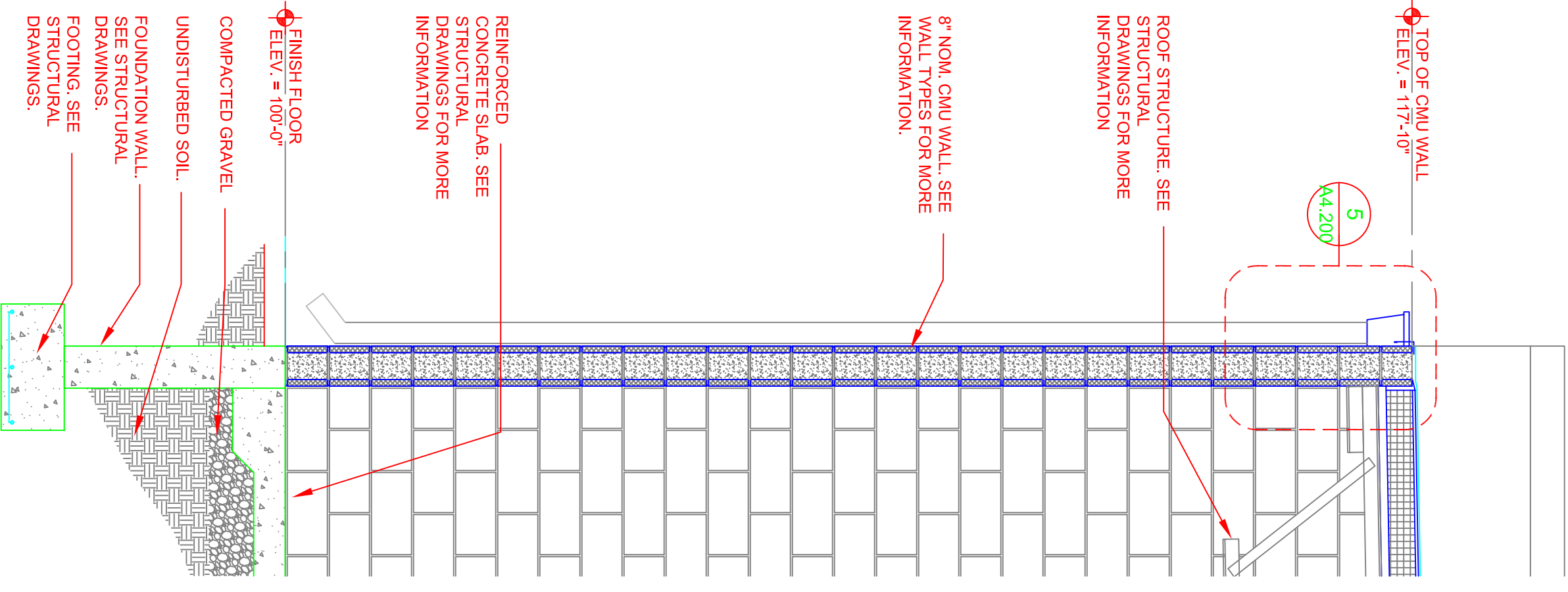
Plan • Design • Engineer • Build • Start-Up

dennisgroup.com
United States • Canada • Brazil • Portugal

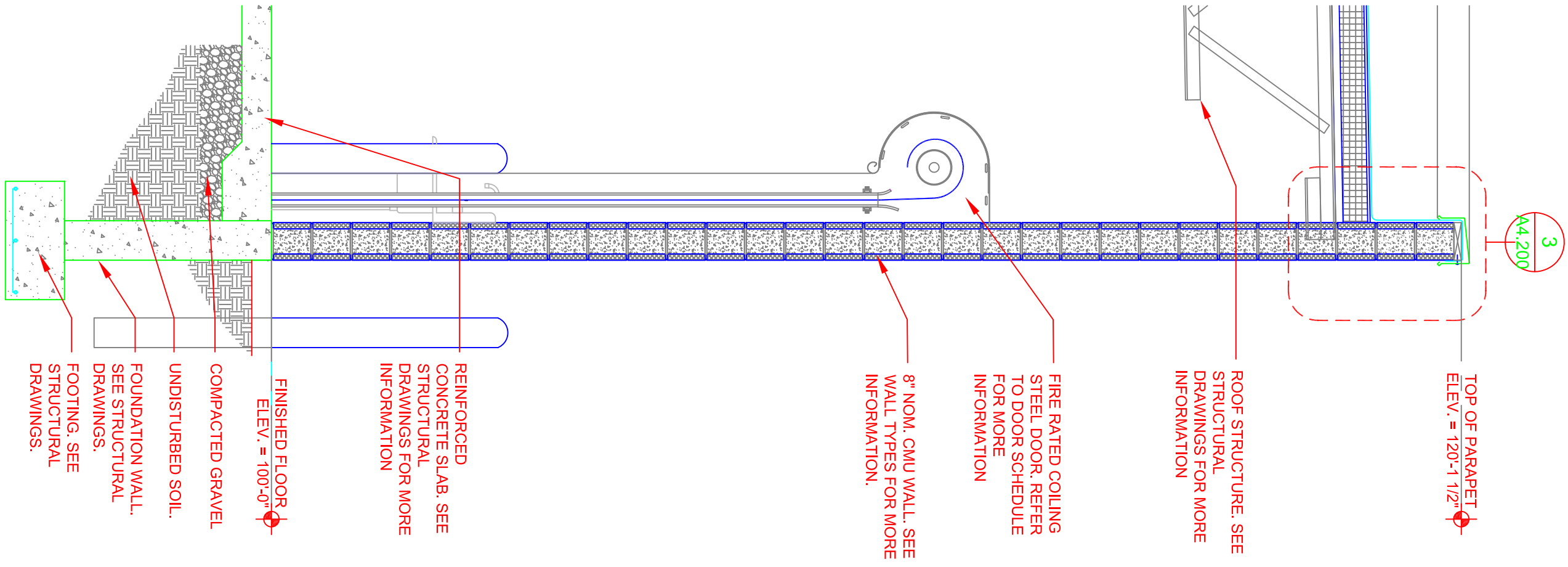
DRAWING NO.

A4.200

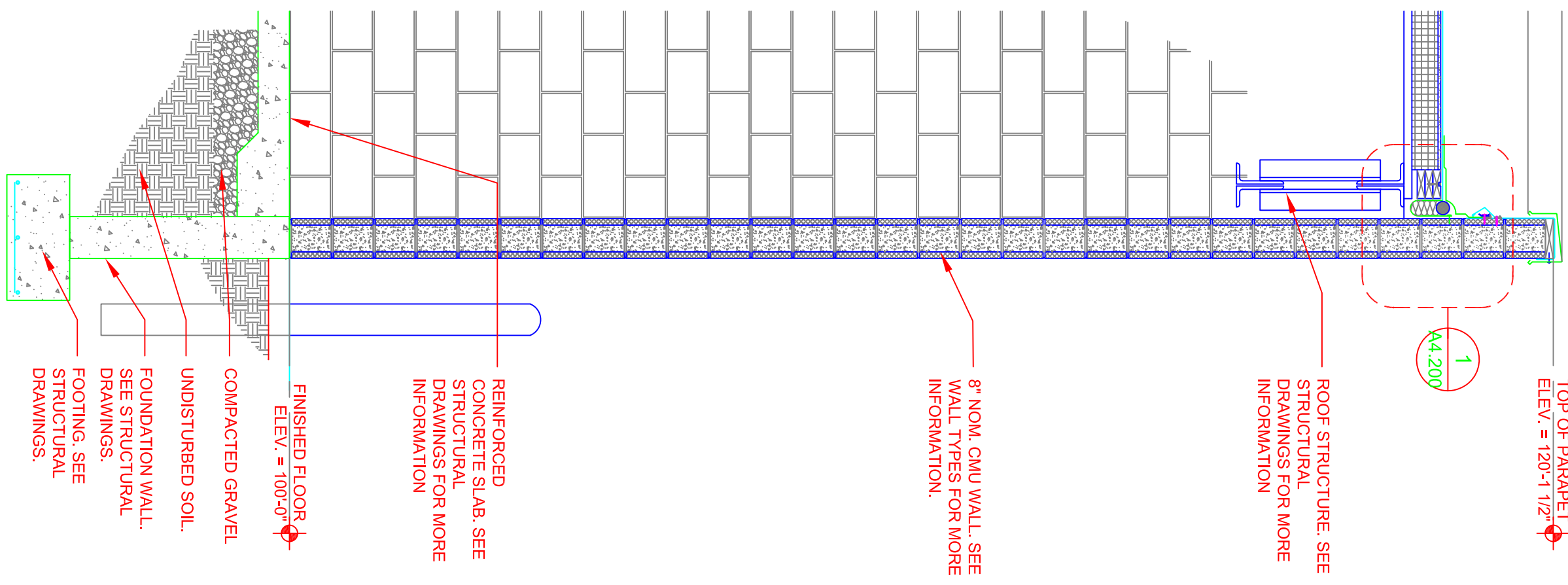
5590



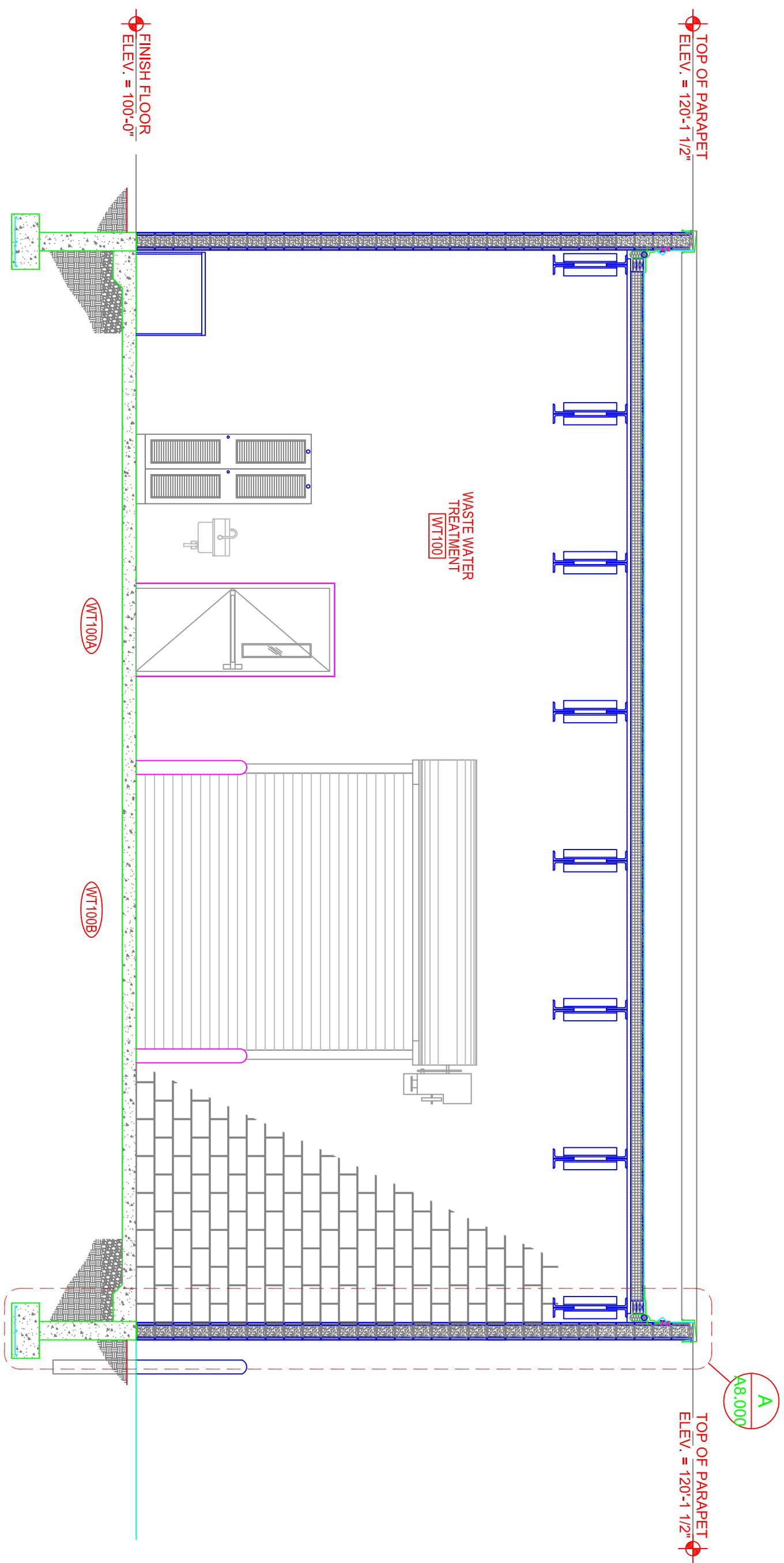
E WALL SECTION
SCALE: 1/2" = 1'-0"



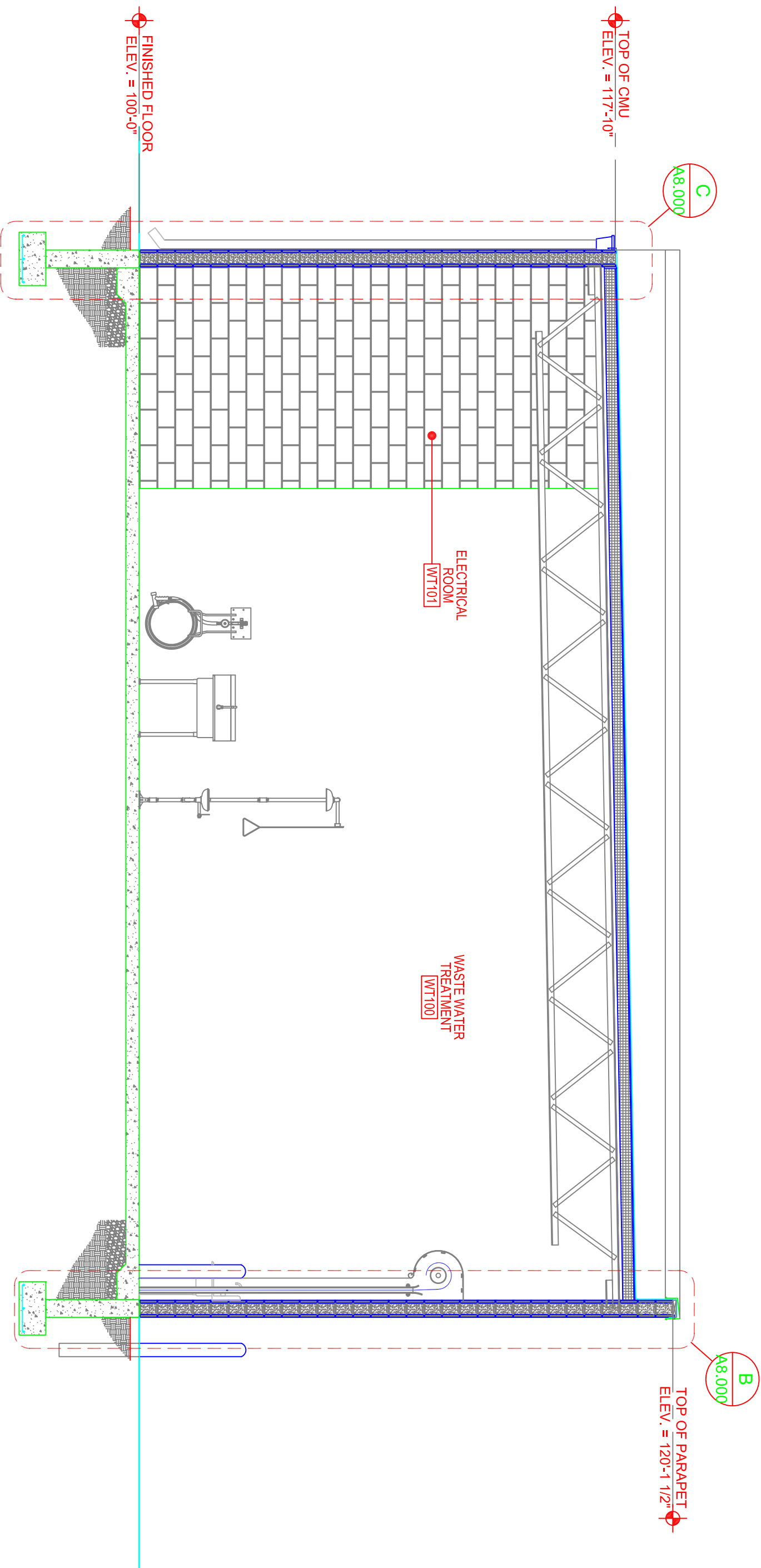
D WALL SECTION
SCALE: 1/2" = 1'-0"



C WALL SECTION
SCALE: 1/2" = 1'-0"



A BUILDING SECTION
SCALE: 1/4" = 1'-0"



B BUILDING SECTION
SCALE: 1/4" = 1'-0"

DENNIS GROUP

Plan • Design • Engineer • Build • Start-Up

dennisgroup.com
United States • Canada • Brazil • Portugal



GREAT LAKES CHEESE
2200 ENTERPRISE AVENUE
LA CROSSE, WISCONSIN 54603

BUILDING SECTIONS /
WALL SECTIONS

A	05.23.2018	SDP	SDP	PLAN COMMISSION REVIEW
RELEASE	DATE	BY	APP.	RELEASED FOR...

DRAWING NO.
A8.000
5590

10 44 16 - PORTABLE FIRE EXTINGUISHERS

PART 1 - GENERAL
1.01 SUMMARY
A. THIS SECTION INCLUDES THE FOLLOWING:
1. PORTABLE FIRE EXTINGUISHERS AND MOUNTING BRACKETS.
1.02 SUBMITTALS
A. PRODUCT DATA: INCLUDE CONSTRUCTION DETAILS, MATERIAL DESCRIPTIONS, DIMENSIONS OF INDIVIDUAL COMPONENTS AND PROFILES, AND FINISHES FOR FIRE-PROTECTION CABINETS.
1. FIRE EXTINGUISHERS: INCLUDE RATING AND CLASSIFICATION.
B. MAINTENANCE DATA: FOR FIRE EXTINGUISHERS TO INCLUDE IN MAINTENANCE MANUALS.
1.03 QUALITY ASSURANCE
A. SOURCE LIMITATIONS: OBTAIN FIRE EXTINGUISHERS AND FIRE-PROTECTION CABINETS THROUGH ONE SOURCE FROM A SINGLE MANUFACTURER.
B. NFPA COMPLIANCE: FABRICATE AND LABEL FIRE EXTINGUISHERS TO COMPLY WITH NFPA 10, "PORTABLE FIRE EXTINGUISHERS."
C. FIRE EXTINGUISHERS: LISTED AND LABELED FOR TYPE, RATING, AND CLASSIFICATION BY AN INDEPENDENT TESTING AGENCY ACCEPTABLE TO AUTHORITIES HAVING JURISDICTION.
1.04 COORDINATION
A. COORDINATE SIZE AND CAPACITY OF FIRE EXTINGUISHERS INDICATED ARE ACCOMMODATED.
1.05 WARRANTY
A. SPECIAL WARRANTY: MANUFACTURER'S STANDARD FORM IN WHICH MANUFACTURER AGREES TO REPAIR OR REPLACE COMPONENTS OF PORTABLE FIRE EXTINGUISHERS THAT FAIL IN MATERIALS OR WORKMANSHIP WITHIN SPECIFIED WARRANTY PERIOD.
1. FAILURES INCLUDE, BUT ARE NOT LIMITED TO, THE FOLLOWING:
A. FAILURE OF HYDROSTATIC TEST ACCORDING TO NFPA 10.
B. FAULTY OPERATION OF VALVES OR RELEASE LEVERS.
2. WARRANTY PERIOD: SIX YEARS FROM DATE OF SUBSTANTIAL COMPLETION.
PART 2 - PRODUCTS
2.01 MANUFACTURERS
A. IN OTHER PART 2 ARTICLES WHERE TITLES BELOW INTRODUCE LISTS, THE FOLLOWING REQUIREMENTS APPLY TO PRODUCT SELECTION:
B. AVAILABLE MANUFACTURERS: SUBJECT TO COMPLIANCE WITH REQUIREMENTS, MANUFACTURERS OFFERING PRODUCTS THAT MAY BE INCORPORATED INTO THE WORK INCLUDE, BUT ARE NOT LIMITED TO, MANUFACTURERS SPECIFIED.
2.02 PORTABLE FIRE EXTINGUISHERS
A. AVAILABLE MANUFACTURERS:
1. ANSUL INCORPORATED.
2. JI INDUSTRIES, INC.
3. KIDDE PYRNETICS.
4. LARSEN'S MANUFACTURING COMPANY.
B. GENERAL: PROVIDE FIRE EXTINGUISHERS OF TYPE, SIZE, AND CAPACITY FOR EACH MOUNTING BRACKET INDICATED.
C. MULTIPURPOSE DRY-CHEMICAL TYPE IN STEEL CONTAINER: UL-RATED 4-A:60-B:C, 4.5-KG (10-LB)
2.03 MOUNTING BRACKETS
A. AVAILABLE MANUFACTURERS:
1. ANSUL INCORPORATED.
2. JI INDUSTRIES, INC.
3. LARSEN'S MANUFACTURING COMPANY.
B. MOUNTING BRACKETS: MANUFACTURER'S STANDARD STEEL, DESIGNED TO SECURE FIRE EXTINGUISHER TO WALL OR STRUCTURE, OF SIZES REQUIRED FOR TYPES AND CAPACITIES OF FIRE EXTINGUISHERS INDICATED, WITH PLATED OR BAKED-ENAMEL FINISH.
1. COLOR: RED.
C. IDENTIFICATION: LETTERING COMPLYING WITH AUTHORITIES HAVING JURISDICTION FOR LETTER STYLE, SIZE, SPACING, AND LOCATION. LOCATE AS INDICATED BY ARCHITECT
1. IDENTIFY BRACKET-MOUNTED FIRE EXTINGUISHERS WITH THE WORDS "FIRE EXTINGUISHER" IN RED LETTER DECALS APPLIED TO MOUNTING SURFACE.
A. ORIENTATION: VERTICAL.
2.04 EXTINGUISHER CABINETS
A. AVAILABLE MANUFACTURERS:
1. JI INDUSTRIES, INC.
2. THOMAS PRODUCTS
B. OFFICE EXTINGUISHER CABINETS: SEMI-RECESSED WALL MOUNTED CABINET, INSIDE BOX DIMENSIONS: 24" H X 9-1/2" W X 6" D, PROJECTING 2-1/2" FROM WALL FACE.
1. COLOR: CLEAR ANODIZED ALUMINUM
2. STYLE: DUO PANEL
3. GLAZING: CLEAR ARCILIC
C. PLANT EXTINGUISHER CABINETS: GASKETED FIBERGLASS WALL MOUNTED CABINET
1. COLOR: RED
3. GLAZING: CLEAR POLYCARBONATE
D. IDENTIFICATION: LETTERING COMPLYING WITH AUTHORITIES HAVING JURISDICTION FOR LETTER STYLE, SIZE, SPACING, AND LOCATION. LOCATE AS INDICATED BY ARCHITECT
1. IDENTIFY EXTINGUISHER CABINETS WITH THE SIGNAGE THAT READS "FIRE EXTINGUISHER" AND THAT IS IN ACCORDANCE WITH LOCAL AUTHORITIES.
A. ORIENTATION: WALL MOUNTED.
2.05 FINISHES, GENERAL
A. COMPLY WITH NAAMMS "METAL FINISHES MANUAL FOR ARCHITECTURAL AND METAL PRODUCTS" FOR RECOMMENDATIONS FOR APPLYING AND DESIGNATING FINISHES.
B. PROTECT MECHANICAL FINISHES ON EXPOSED SURFACES FROM DAMAGE BY APPLYING A STRIPPABLE, TEMPORARY PROTECTIVE COVERING BEFORE SHIPPING.
C. APPEARANCE OF FINISHED WORK: VARIATIONS IN APPEARANCE OF ABUTTING OR ADJACENT PIECES ARE ACCEPTABLE IF THEY ARE WITHIN ONE-HALF OF THE RANGE OF APPROVED SAMPLES. NOTICEABLE VARIATIONS IN THE SAME PIECE ARE NOT ACCEPTABLE. VARIATIONS IN APPEARANCE OF OTHER COMPONENTS ARE ACCEPTABLE IF THEY ARE WITHIN THE RANGE OF APPROVED SAMPLES AND ARE ASSEMBLED OR INSTALLED TO MINIMIZE CONTRAST.
2.06 STEEL FINISHES
A. SURFACE PREPARATION: CLEAN SURFACES OF DIRT, OIL, GREASE, MILL SCALE, RUST, AND OTHER CONTAMINANTS THAT COULD IMPAIR PAINT BOND USING MANUFACTURER'S STANDARD METHODS.
B. BAKED-ENAMEL FINISH: IMMEDIATELY AFTER CLEANING AND PRETREATING, APPLY MANUFACTURER'S STANDARD TWO-COAT, BAKED-ENAMEL FINISH CONSISTING OF PRIME COAT AND THERMOSETTING TOPCOAT. COMPLY WITH PAINT MANUFACTURERS WRITTEN INSTRUCTIONS FOR APPLYING AND BAKING TO ACHIEVE A MINIMUM DRY FILM THICKNESS OF 0.05 MM (2 MILS).
PART 3 - EXECUTION
3.01 EXAMINATION
A. EXAMINE FIRE EXTINGUISHERS FOR PROPER CHARGING AND TAGGING.
1. REMOVE AND REPLACE DAMAGED, DEFECTIVE, OR UNDERCHARGED UNITS.
B. PROCEED WITH INSTALLATION ONLY AFTER UNSATISFACTORY CONDITIONS HAVE BEEN CORRECTED.
3.02 INSTALLATION
A. GENERAL: INSTALL FIRE-PROTECTION SPECIALTIES IN LOCATIONS AND AT MOUNTING HEIGHTS INDICATED OR, IF NOT INDICATED, AT HEIGHTS ACCEPTABLE TO AUTHORITIES HAVING JURISDICTION.
B. FASTEN MOUNTING BRACKETS TO SURFACES, SQUARE AND PLUMB, AT LOCATIONS INDICATED.
C. IDENTIFICATION: APPLY VINYL LETTERING AT LOCATIONS INDICATED.
3.03 ADJUSTING AND CLEANING
A. REMOVE TEMPORARY PROTECTIVE COVERINGS AND STRIPPABLE FILMS, IF ANY, AS FIRE-PROTECTION SPECIALTIES ARE INSTALLED, UNLESS OTHERWISE INDICATED IN MANUFACTURER'S WRITTEN INSTALLATION INSTRUCTIONS.
END OF SECTION 10 44 16

10 51 13 - METAL LOCKERS

PART 1 - GENERAL
1.01 SUMMARY
A. THIS SECTION INCLUDES THE FOLLOWING:
1. WELDED METAL LOCKERS.
2. LOCKER BENCHES.
1.02 DEFINITIONS
A. UNCOATED STEEL SHEET THICKNESSES: INDICATED AS THE MINIMUM THICKNESSES.
1.03 SUBMITTALS
A. PRODUCT DATA: INCLUDE CONSTRUCTION DETAILS, MATERIAL DESCRIPTIONS, DIMENSIONS OF INDIVIDUAL COMPONENTS AND PROFILES, AND FINISHES FOR EACH TYPE OF METAL LOCKER.
B. SHOP DRAWINGS: INCLUDE PLANS, ELEVATIONS, SECTIONS, DETAILS, AND ATTACHMENTS TO OTHER WORK.
1. SHOW BASE, SLOPING TOPS, FILLER PANELS AND OTHER ACCESSORIES.
2. INCLUDE LOCKER IDENTIFICATION SYSTEM.
C. SAMPLES FOR INITIAL SELECTION: FOR UNITS WITH FACTORY-APPLIED COLOR FINISHES.
D. QUALIFICATION DATA: FOR INSTALLER.
E. MAINTENANCE DATA: FOR ADJUSTING, REPAIRING, AND REPLACING LOCKER DOORS AND LATCHING MECHANISMS TO INCLUDE IN MAINTENANCE MANUALS.
F. WARRANTY: SPECIAL WARRANTY SPECIFIED IN THIS SECTION.
1.04 QUALITY ASSURANCE
A. INSTALLER QUALIFICATIONS: AN AUTHORIZED REPRESENTATIVE OF METAL LOCKER MANUFACTURER FOR INSTALLATION AND MAINTENANCE OF UNITS REQUIRED FOR THIS PROJECT.
B. SOURCE LIMITATIONS: OBTAIN METAL LOCKERS AND ACCESSORIES THROUGH ONE SOURCE FROM A SINGLE MANUFACTURER.
C. REGULATORY REQUIREMENTS: WHERE METAL LOCKERS ARE INDICATED TO COMPLY WITH ACCESSIBILITY REQUIREMENTS, COMPLY WITH "AMERICANS WITH DISABILITIES ACT (ADA), ACCESSIBILITY GUIDELINES FOR BUILDINGS AND FACILITIES (ADAAG)", ANSII A117.1.
1. PROVIDE HARDWARE THAT DOES NOT REQUIRE TIGHT GRASPING, PINCHING, OR TWISTING OF THE WRIST, AND THAT OPERATES WITH A FORCE OF NOT MORE THAN 5 LBF (22.2 N).
D. CONSTRUCTION REQUIREMENTS, DOOR ASSEMBLY: PROVIDE METAL DOOR ASSEMBLIES CONFIGURED AND TESTED FOR APPLICABLE CRITERIA IN ACCORDANCE WITH ASTM F-476-1984(R96) FOR MINIMUM X3 CLASSIFICATION FOR GRADE 10 LOCKERS.
1.05 DELIVERY, STORAGE, AND HANDLING
A. DO NOT DELIVER METAL LOCKERS UNTIL SPACES TO RECEIVE THEM ARE CLEAN, DRY, AND READY FOR METAL LOCKER INSTALLATION.
1.06 PROJECT CONDITIONS
A. FIELD MEASUREMENTS: VERIFY THE FOLLOWING BY FIELD MEASUREMENTS BEFORE FABRICATION AND INDICATE MEASUREMENTS ON SHOP DRAWINGS:
1. CONCEALED FRAMING, BLOCKING, AND REINFORCEMENTS THAT SUPPORT METAL LOCKERS BEFORE THEY ARE ENCLOSED.
1.07 COORDINATION
A. COORDINATE SIZES AND LOCATIONS OF FRAMING, BLOCKING, FURRING, REINFORCEMENTS, AND OTHER RELATED UNITS OF WORK SPECIFIED IN OTHER SECTIONS TO ENSURE THAT METAL LOCKERS CAN BE SUPPORTED AND INSTALLED AS INDICATED.
1.08 WARRANTY
A. SPECIAL WARRANTY: MANUFACTURER'S STANDARD FORM IN WHICH MANUFACTURER AGREES TO REPAIR OR REPLACE COMPONENTS OF METAL LOCKERS THAT FAIL IN MATERIALS OR WORKMANSHIP, EXCLUDING FINISH, WITHIN SPECIFIED WARRANTY PERIOD.
1. FAILURES INCLUDE, BUT ARE NOT LIMITED TO, THE FOLLOWING:
a. STRUCTURAL FAILURES
b. FAULTY OPERATION OF LATCHES AND OTHER DOOR HARDWARE.
2. DAMAGE FROM DELIBERATE DESTRUCTION AND VANDALISM IS EXCLUDED.
3. WARRANTY PERIOD FOR WELDED METAL LOCKERS: TEN YEARS FROM DATE OF SUBSTANTIAL COMPLETION.
PART 2 - PRODUCTS
2.01 MANUFACTURERS
A. IN OTHER PART 2 ARTICLES WHERE TITLES BELOW INTRODUCE LISTS, THE FOLLOWING REQUIREMENTS APPLY TO PRODUCT SELECTION:
1. AVAILABLE PRODUCTS: SUBJECT TO COMPLIANCE WITH REQUIREMENTS, PRODUCTS THAT MAY BE INCORPORATED INTO THE WORK INCLUDE:
a) REPUBLIC STORAGE SYSTEMS
b) ARCHITECT APPROVED EQUAL
2.02 MATERIALS
A. COLD-ROLLED STEEL SHEET: ASTM A 1008, COMMERCIAL STEEL (CS) TYPE B, SUITABLE FOR EXPOSED APPLICATIONS.
B. STAINLESS-STEEL SHEET: ASTM A 666, TYPE 304.
C. FASTENERS: ZINC-OR NICKEL-PLATED STEEL, SLOTLESS-TYPE EXPOSED BOLT HEADS, AND SELF-LOCKING NUTS OR LOCK WASHERS FOR NUTS ON MOVING PARTS.
D. ANCHORS: SELECT MATERIAL, TYPE, SIZE, AND FINISH REQUIRED FOR SECURE ANCHORAGE TO EACH SUBSTRATE.
1. PROVIDE NONFERROUS-METAL OR HOT-DIP GALVANIZED ANCHORS AND INSERTS FOR CORROSION RESISTANCE.
2. PROVIDE TOOTHED-STEEL OR LEAD EXPANSION SLEEVES FOR DRILLED-IN-PLACE ANCHORS.
2.03 ALL-WELDED METAL LOCKERS
A. MANUFACTURERS:
1. REPUBLIC STORAGE SYSTEMS.
B. LOCKER ARRANGEMENT: REFER TO FLOOR PLANS AND ELEVATIONS
1. DOUBLE TIER - HDV 72 INCH
2. 4 TIER - HDV 72 INCH
C. BODY: ASSEMBLED BY WELDING BODY COMPONENTS TOGETHER. FABRICATE FROM UNPERFORATED, COLD-ROLLED STEEL SHEET WITH THICKNESSES AS FOLLOWS:
1. TOPS, BOTTOMS, AND SIDES: 0.0528 INCH (1.35 MM) THICK.
2. BACKS: 0.0428 INCH (1.1 MM) THICK.
3. SHELVES: 0.0528 INCH (1.35 MM) THICK, WITH DOUBLE BEND AT FRONT AND SINGLE BEND AT SIDES AND BACK.
D. FRAMES: CHANNEL FORMED; FABRICATED FROM 0.0528 INCH- (1.35-MM-) THICK, COLD-ROLLED STEEL SHEET, LAPPED AND FACTORY WELDED AT CORNERS, WITH TOP AND BOTTOM MAIN FRAMES FACTORY WELDED TO VERTICAL MAIN FRAMES. FORM CONTINUOUS, INTEGRAL DOOR STRIKE FULL HEIGHT ON VERTICAL MAIN FRAMES.
1. CROSS FRAMES BETWEEN TIERS: CHANNEL FORMED AND FABRICATED FROM SAME MATERIAL AS MAIN FRAMES; WELDED TO VERTICAL MAIN FRAMES.
E. DOORS: ONE-PIECE; FABRICATED FROM 0.0677-INCH- (1.73-MM-) THICK, COLD-ROLLED STEEL SHEET FORMED INTO CHANNEL SHAPE WITH DOUBLE BEND AT VERTICAL EDGES, AND WITH RIGHT-ANGLE SINGLE BEND AT HORIZONTAL EDGES.
1. REINFORCEMENT: MANUFACTURER'S STANDARD REINFORCING ANGLES, CHANNELS, OR STIFFENERS FOR DOORS MORE THAN 15 INCHES (381 MM) WIDE; WELDED TO INNER FACE OF DOORS.
2. DOOR STYLE: VENTED PANEL AS FOLLOWS:
a. DOUBLE TIER: DIAMOND SHAPED PERFORATION.
F. HINGES: SELF-CLOSING; WELDED TO DOOR AND ATTACHED TO DOOR FRAME WITH NOT LESS THAN 2 FACTORY-INSTALLED RIVETS PER HINGE THAT ARE COMPLETELY CONCEALED AND TAMPER RESISTANT WHEN DOOR IS CLOSED; FABRICATED TO SWING 180 DEGREES.
1. CONTINUOUS HINGES: MANUFACTURER'S STANDARD, STEEL CONTINUOUS HINGE.
2. HINGES: MANUFACTURER'S STANDARD, STEEL CONTINUOUS OR KNUCKLE TYPE.
G. RECESSED DOOR HANDLE AND LATCH AT DOUBLE TIER LOCATIONS: STAINLESS-STEEL CUP WITH INTEGRAL DOOR PULL, RECESSED SO LOCKING DEVICE DOES NOT PROTRUDE BEYOND FACE OF DOOR; PRY RESISTANT.
1. MULTIPoint LATCHING: FINGER-LIFT LATCH CONTROL DESIGNED FOR USE WITH BUILT-IN PADLOCKS; POSITIVE AUTOMATIC AND PRELOCKING.
a. LATCH HOOKS: EQUIP DOORS WITH 2 LATCH HOOKS; FABRICATED FROM MINIMUM 0.1116-INCH- (2.8-MM) THICK STEEL, WELDED TO FULL-HEIGHT DOOR STRIKES; WITH RESILIENT SILENCER ON EACH LATCH HOOK.
b. LATCHING MECHANISM: MANUFACTURER'S STANDARD RATTLE-FREE LATCHING MECHANISM AND MOVING COMPONENTS ISOLATED TO PREVENT METAL-TO-METAL CONTACT AND INCORPORATING A PRELOCKING DEVICE THAT ALLOWS LOCKER DOOR TO BE LOCKED WHILE DOOR IS OPEN AND THEN CLOSED WITHOUT UNLOCKING OR DAMAGING LOCK OR LATCHING MECHANISM.
H. EQUIPMENT: EQUIP EACH DOUBLE TIER METAL LOCKER WITH THE FOLLOWING, UNLESS OTHERWISE INDICATED:
1. COAT RODS: FOR EACH COMPARTMENT OF DOUBLE-TIER METAL LOCKERS - CENTERED IN LOCKER UNIT.
I. ACCESSORIES:
1. CONTINUOUS SLOPING TOPS: FABRICATED FROM MINIMUM 0.0428-INCH- (1.1-MM-) THICK, COLD-ROLLED STEEL SHEET; APPROXIMATELY 20-DEGREE PITCH.
a. CLOSURES: VERTICAL-END TYPE.
2. FILLER PANELS: FABRICATED FROM 0.0428-INCH- (1.1-MM-) THICK, COLD-ROLLED STEEL SHEET.
J. FINISH: BAKED ENAMEL.
1. COLOR: AS SELECTED BY ARCHITECT FROM MANUFACTURER'S FULL RANGE.

10 51 13 - METAL LOCKERS CONT.

2.04 LOCKER BENCHES
A. GENERAL: PROVIDE LOCKER BENCHES FABRICATED BY SAME MANUFACTURER AS METAL LOCKERS.
B. BENCH TOPS (STANDARD): MANUFACTURER'S STANDARD 1-PIECE UNITS, OF THE FOLLOWING MATERIAL, MINIMUM 9-1/2 INCHES (240 MM) WIDE BY 1-1/4 INCHES (32 MM) THICK, WITH ROUNDED CORNERS AND EDGES.
1. LAMINATED MAPLE WITH ONE COAT OF CLEAR SEALER ON ALL SURFACES, AND ONE COAT OF CLEAR LACQUER ON TOP AND SIDES.
C. BENCH TOPS (ACCESSIBLE): MANUFACTURER'S STANDARD 1-PIECE UNITS, OF THE FOLLOWING MATERIAL, MINIMUM 20 TO 24 INCHES (240 MM) WIDE BY 42 INCHES LONG BY 1-1/4 INCHES (32 MM) THICK, WITH ROUNDED CORNERS AND EDGES.
1. LAMINATED MAPLE WITH ONE COAT OF CLEAR SEALER ON ALL SURFACES, AND ONE COAT OF CLEAR LACQUER ON TOP AND SIDES.
D. FIXED PEDESTALS: MANUFACTURER'S STANDARD SUPPORTS, WITH PREDRILLED FASTENER HOLES FOR ATTACHING BENCH TOP AND ANCHORING TO FLOOR, COMPLETE WITH FASTENERS AND ANCHORS, AND AS FOLLOWS:
1. TUBULAR STEEL - 1-1/4-INCH- (32-MM-) DIAMETER STEEL TUBING, WITH 0.1265-INCH- (3.2-MM-) THICK STEEL FLANGES WELDED AT TOP AND BASE, WITH BAKED-ENAMEL FINISH; ANCHORED WITH EXPOSED FASTENERS.
a. COLOR: MATCH METAL LOCKERS.
2.05 FABRICATION
A. GENERAL: FABRICATE METAL LOCKERS SQUARE, RIGID, AND WITHOUT WARP; WITH METAL FACES FLAT AND FREE OF DENTS OR DISTORTION. MAKE EXPOSED METAL EDGES FREE OF SHARP EDGES AND BURRS, AND SAFE TO TOUCH.
1. FORM BODY PANELS, DOORS, SHELVES, AND ACCESSORIES FROM ONE-PIECE STEEL SHEET, UNLESS OTHERWISE INDICATED.
2. PROVIDE FASTENERS, FILLER PLATES, SUPPORTS, CLIPS, AND CLOSURES AS REQUIRED FOR A COMPLETE INSTALLATION.
B. UNIT PRINCIPLE: FABRICATE EACH METAL LOCKER WITH AN INDIVIDUAL DOOR AND FRAME; INDIVIDUAL TOP, BOTTOM, AND BACK; AND COMMON INTERMEDIATE UPRIGHTS SEPARATING COMPARTMENTS.
C. ALL-WELDED CONSTRUCTION: FACTORY PREASSEMBLE METAL LOCKERS BY WELDING ALL JOINTS, SEAMS, AND CONNECTIONS, WITH NO BOLTS, NUTS, SCREWS, OR RIVETS USED IN ASSEMBLY OF MAIN LOCKER GROUPS. FACTORY WELD MAIN LOCKER GROUPS INTO ONE-PIECE STRUCTURES. GRIND EXPOSED WELDS FLUSH.
D. COAT RODS: FABRICATED FROM 3/4-INCH- (19-MM-) DIAMETER STEEL; CHROME FINISHED.
E. CONTINUOUS BASE: FORMED INTO CHANNEL OR Z PROFILE FOR STIFFNESS, AND FABRICATED IN LENGTHS AS LONG AS PRACTICABLE TO ENCLOSE BASE AND BASE ENDS OF METAL LOCKERS; FINISHED TO MATCH LOCKERS.
F. CONTINUOUS SLOPING TOPS: FABRICATED IN LENGTHS AS LONG AS PRACTICABLE, WITHOUT VISIBLE FASTENERS AT SPLICE LOCATIONS; FINISHED TO MATCH LOCKERS.
G. FINISHED END PANELS: DESIGNED FOR CONCEALING UNUSED PENETRATIONS AND FASTENERS, EXCEPT FOR PERIMETER FASTENERS, AT EXPOSED ENDS OF NONRECESSED METAL LOCKERS; FINISHED TO MATCH LOCKERS.
2.06 STEEL SHEET FINISHES
A. GENERAL: COMPLY WITH NAAMMS "METAL FINISHES MANUAL FOR ARCHITECTURAL AND METAL PRODUCTS" FOR RECOMMENDATIONS FOR APPLYING AND DESIGNATING FINISHES.
B. FACTORY FINISH STEEL SURFACES AND ACCESSORIES EXCEPT STAINLESS-STEEL AND CHROME-PLATED SURFACES.
C. SURFACE PREPARATION: CLEAN SURFACES OF DIRT, OIL, GREASE, MILL SCALE, RUST, AND OTHER CONTAMINANTS THAT COULD IMPAIR PAINT BOND. USE MANUFACTURER'S STANDARD METHODS.
D. BAKED-ENAMEL FINISH: IMMEDIATELY AFTER CLEANING, PRETREATING, AND PHOSPHATIZING, APPLY MANUFACTURER'S STANDARD THERMOSETTING BAKED-ENAMEL FINISH. COMPLY WITH PAINT MANUFACTURERS WRITTEN INSTRUCTIONS FOR APPLICATION, BAKING, AND MINIMUM DRY FILM THICKNESS.
PART 3 - EXECUTION
3.01 EXAMINATION
A. EXAMINE WALLS, FLOORS, AND SUPPORT BASES, WITH INSTALLER PRESENT, FOR COMPLIANCE WITH REQUIREMENTS FOR INSTALLATION TOLERANCES AND OTHER CONDITIONS AFFECTING PERFORMANCE OF WORK.
B. PROCEED WITH INSTALLATION ONLY AFTER UNSATISFACTORY CONDITIONS HAVE BEEN CORRECTED.
3.02 INSTALLATION
A. GENERAL: INSTALL LEVEL, PLUMB, AND TRUE; SHIM AS REQUIRED, USING CONCEALED SHIMS.
1. ANCHOR LOCKER RUNS AT ENDS AND AT INTERVALS RECOMMENDED BY MANUFACTURER, BUT NOT MORE THAN 910 MM (36 INCHES) O.C. INSTALL ANCHORS THROUGH BACKUP REINFORCING PLATES, CHANNELS, OR BLOCKING AS REQUIRED TO PREVENT METAL DISTORTION, USING CONCEALED FASTENERS.
B. ALL-WELDED METAL LOCKERS: CONNECT GROUPS OF ALL-WELDED METAL LOCKERS TOGETHER WITH STANDARD FASTENERS, WITH NO EXPOSED FASTENERS ON FACE FRAMES.
C. EQUIPMENT AND ACCESSORIES: FIT EXPOSED CONNECTIONS OF TRIM, FILLERS, AND CLOSURES ACCURATELY TOGETHER TO FORM TIGHT, HAIRLINE JOINTS, WITH CONCEALED FASTENERS AND SPLICE PLATES.
1. ATTACH SLOPING TOP UNITS TO METAL LOCKERS, WITH CLOSURES AT EXPOSED ENDS.
2. ATTACH FINISHED END PANELS WITH FASTENERS ONLY AT PERIMETER TO CONCEAL EXPOSED ENDS OF NONRECESSED METAL LOCKERS.
3.03 ADJUSTING, CLEANING, AND PROTECTION
A. CLEAN, LUBRICATE, AND ADJUST HARDWARE. ADJUST DOORS AND LATCHES TO OPERATE EASILY WITHOUT BINDING.
B. PROTECT METAL LOCKERS FROM DAMAGE, ABUSE, DUST, DIRT, STAIN, OR PAINT. DO NOT PERMIT METAL LOCKER USE DURING CONSTRUCTION.
C. TOUCH UP MARRED FINISHES, OR REPLACE METAL LOCKERS THAT CANNOT BE RESTORED TO FACTORY-FINISHED APPEARANCE. USE ONLY MATERIALS AND PROCEDURES RECOMMENDED OR FURNISHED BY METAL LOCKER MANUFACTURER.
END OF SECTION 10 51 13

FILE PATH: G:\5550\DWG\5550A10_006-010.dwg PLOT DATE: 02/20/18 PLOT TIME: 4:08:15 PM

Table with 10 columns and 10 rows for revision tracking. Columns include: No., Description, Date, By, App., SPP, SPP, SPP, SPP, SPP.

GREAT LAKES CHEESE
2200 ENTERPRISE AVENUE
LA CROSSE, WISCONSIN 54603
ARCHITECTURAL SPECIFICATIONS
SHEET 10

DENNIS GROUP
Plan • Design • Engineer • Build • Start-Up
United States • Canada • Brazil • Portugal
dennisgroup.com

DRAWING NO.
A10.010
5590