

metronet
2701 COMMUNICATIONS WAY
EVANSVILLE, IN, 47715

Fullerton
1100 E WOODFIELD ROAD, SUITE 503
SCI LAUMBURG, ILLINOIS 60173
TEL: 847-908-8400
DESIGN FIRM NO 184 008202-0006
www.fullerton-us.com

REV	DATE	DESCRIPTION	BY
A	09/25/23	ISSUED FOR REVIEW	NS

I HEREBY CERTIFY THAT THESE DRAWINGS WERE PREPARED BY ME OR UNDER MY DIRECT SUPERVISION AND CONTROL, AND TO THE BEST OF MY KNOWLEDGE AND BELIEF COMPLY WITH THE REQUIREMENTS OF ALL APPLICABLE CODES.

TASK NAME
WILC025-U-S2

TASK DESCRIPTION
FIBER OPTIC CONDUIT PLACEMENT

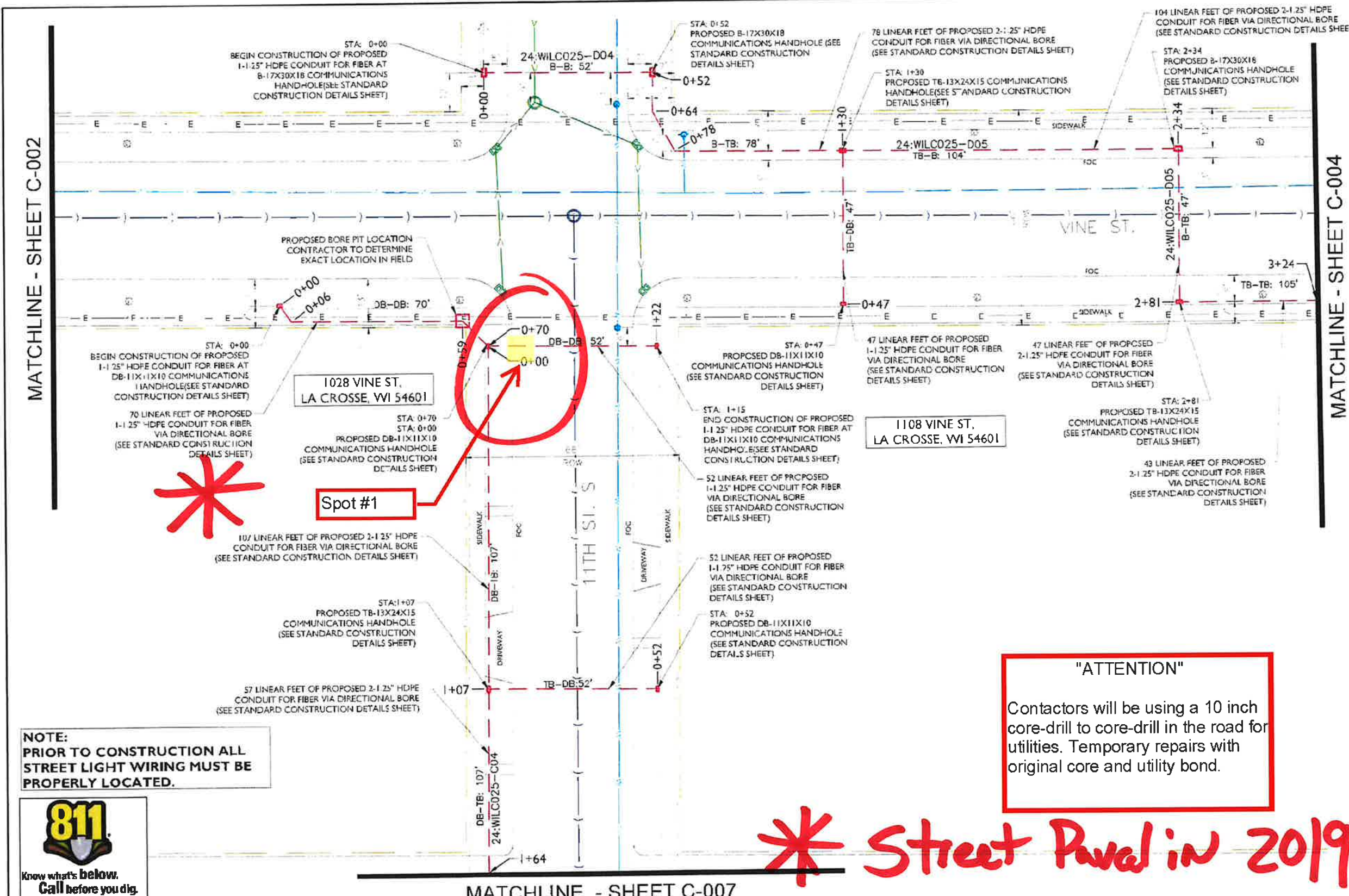
PROJECT AREA
LACROSSE, WI, USA

SHEET SCALE
1" = 30'-0"

SHEET TITLE
DESIGN LAYOUT

GRID NUMBER

SHEET NUMBER
C-003



MATCHLINE - SHEET C-002

MATCHLINE - SHEET C-004

MATCHLINE - SHEET C-007

NOTE:
PRIOR TO CONSTRUCTION ALL STREET LIGHT WIRING MUST BE PROPERLY LOCATED.



- NOTE:**
- PROPOSED CONDUIT SHALL AVOID EXISTING SEEPAGE BEDS
 - BURY AT 24" MIN. UNDER SOFT SURFACE-BURY AT 36" MIN. UNDER HARD SURFACE
 - MAINTAIN 1' FROM BACK OF SIDEWALK, WHEN APPLICABLE.

NOTE:
METRONET WILL MAINTAIN 5' CLEARANCE FROM EXISTING INLETS, MANHOLES, VALVES, AND FIRE HYDRANTS & 7.5' CLEARANCE FROM MANHOLES AND CATCH BASINS.



** Street Paved in 2019*