



THIS DOCUMENT IS THE PROPERTY OF I & S GROUP, INC. AND MAY NOT BE USED, COPIED OR DUPLICATED WITHOUT PRIOR WRITTEN CONSENT.
© 2024 I & S GROUP, INC.

PROJECT
**ST. CLARE
HEALTH MISSION**

**CLINIC
RENOVATION &
EXPANSION**

LA CROSSE WISCONSIN

REVISION SCHEDULE		
DATE	DESCRIPTION	BY

PROJECT NO.	
FILE NAME	
DRAWN BY	Author
DESIGNED BY	Designer
REVIEWED BY	Checker
ORIGINAL ISSUE DATE	
CLIENT PROJECT NO.	

TITLE

**EXTERIOR
ELEVATIONS**

SHEET

A2-11

PRELIMINARY NOT FOR CONSTRUCTION



VIEW FROM NORTHEAST

K.3a, M.2 - DISTINCT ROOF SHAPES
PROVIDE VARIATION IN BUILDING FORM

K.3c - VARIATION OF MATERIAL AND COLOR TO
BREAK UP WALL SURFACE

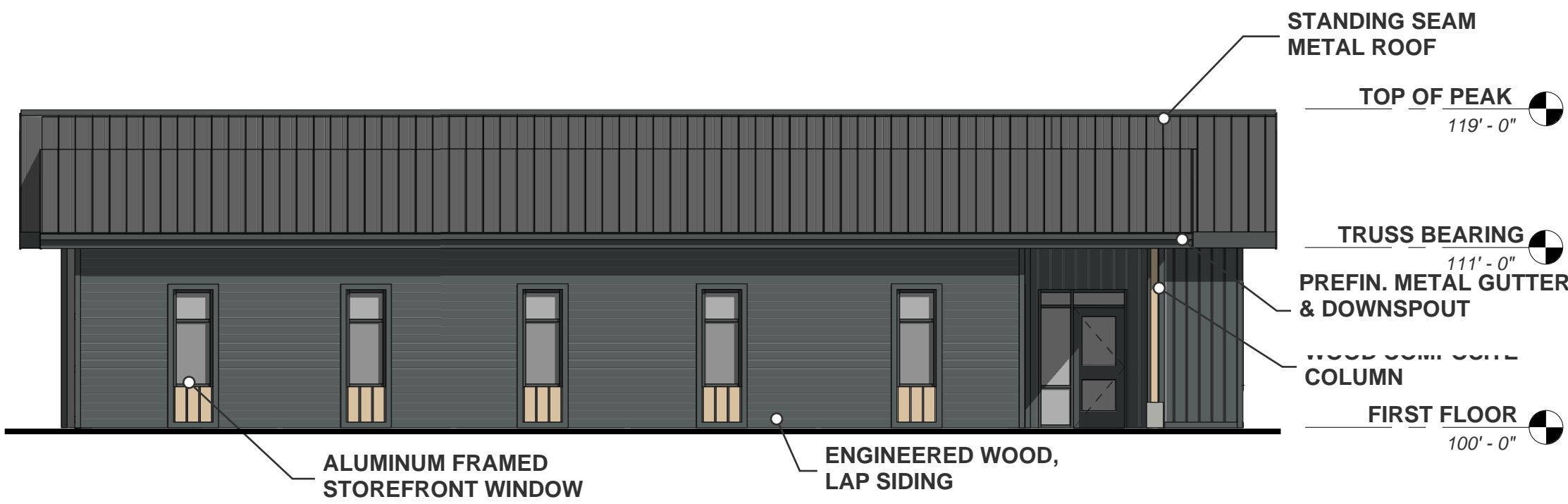
K.4a - FACADE ARTICULATED WITH PROJECTIONS



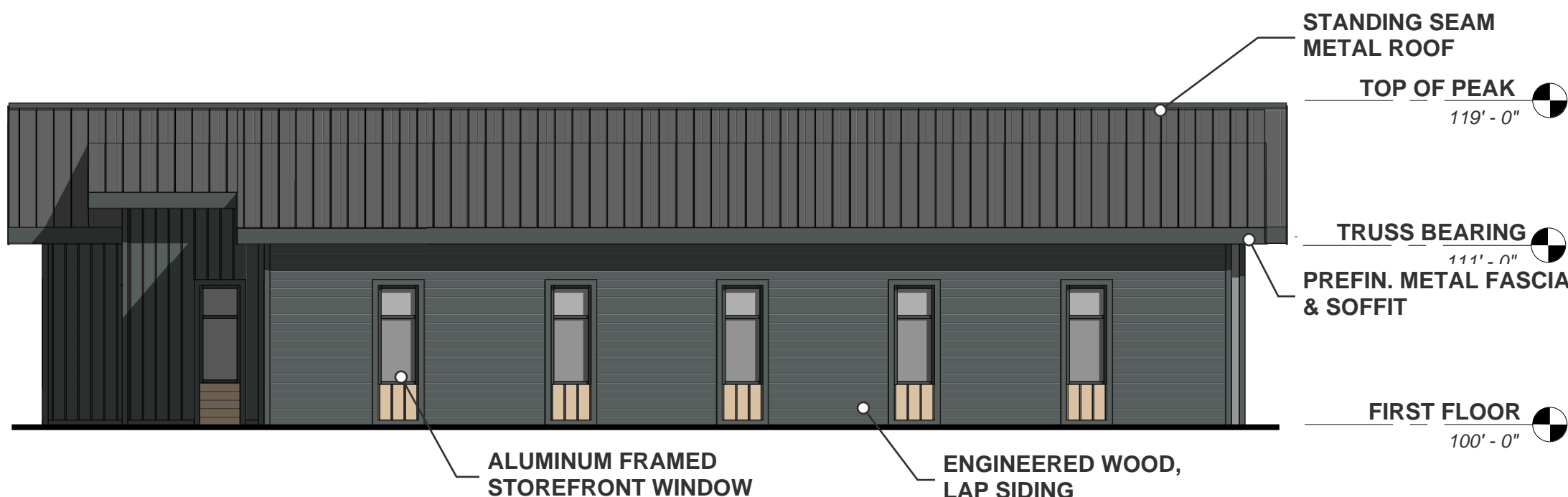
VIEW FROM NORTHWEST

L.3, N.3 - TRIM SURROUNDING ALL OPENINGS

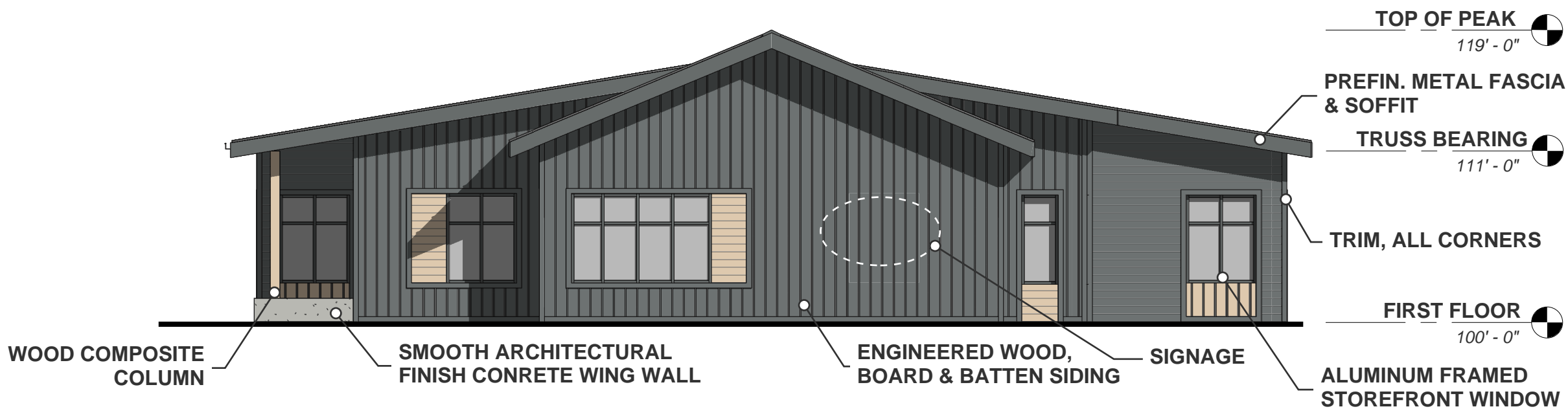
K.3b - EMPHASIS OF BUILDING ENTRY
THROUGH RECESSED FORM
L.2 - PRIMARY ENTRY COVERED AT
LEAST 3FT



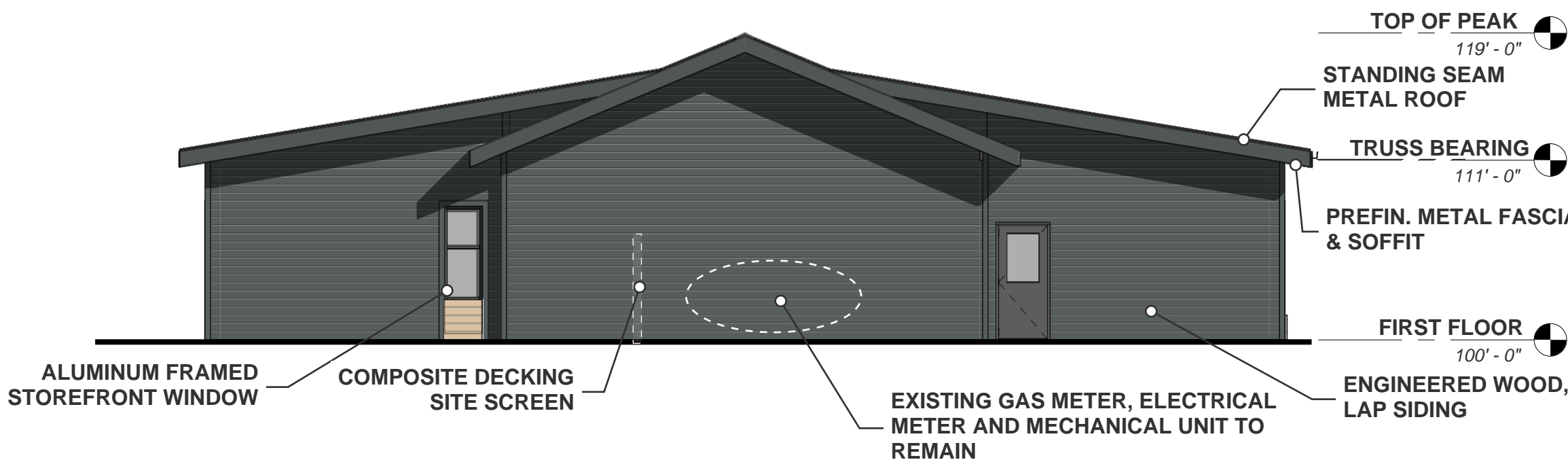
1 EAST ELEVATION
1/8" = 1'-0"



3 WEST ELEVATION — STREET FACING FACADE
1/8" = 1'-0"
TOTAL ELEVATION AREA = 727 SF
TOTAL FENESTRATION REQUIRED = 727(.2) = 149 SF
TOTAL FENESTRATION PROVIDED = 150 SF



2 NORTH ELEVATION — STREET FACING FACADE
1/8" = 1'-0"
TOTAL ELEVATION AREA = 727 SF
TOTAL FENESTRATION REQUIRED = 727(.2) = 145 SF
TOTAL FENESTRATION PROVIDED = 192 SF



4 EAST ELEVATION
1/8" = 1'-0"





THIS DOCUMENT IS THE PROPERTY OF I & S GROUP, INC. AND MAY NOT BE USED, COPIED OR DUPLICATED WITHOUT PRIOR WRITTEN CONSENT.
© 2024 I & S GROUP, INC.

PROJECT
**ST. CLARE
HEALTH MISSION**

**CLINIC
RENOVATION &
EXPANSION**

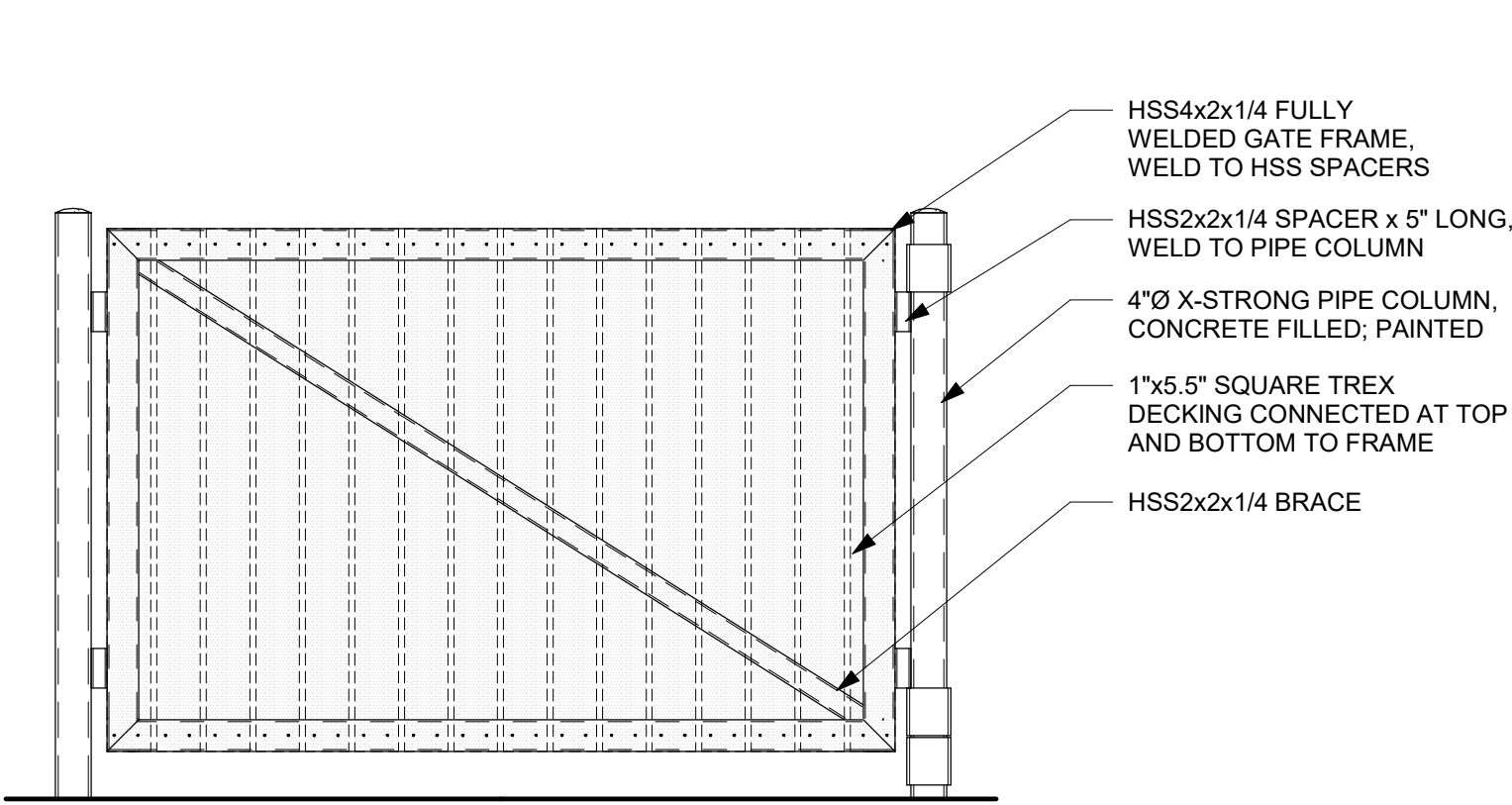
LA CROSSE WISCONSIN

REVISION SCHEDULE		
DATE	DESCRIPTION	BY

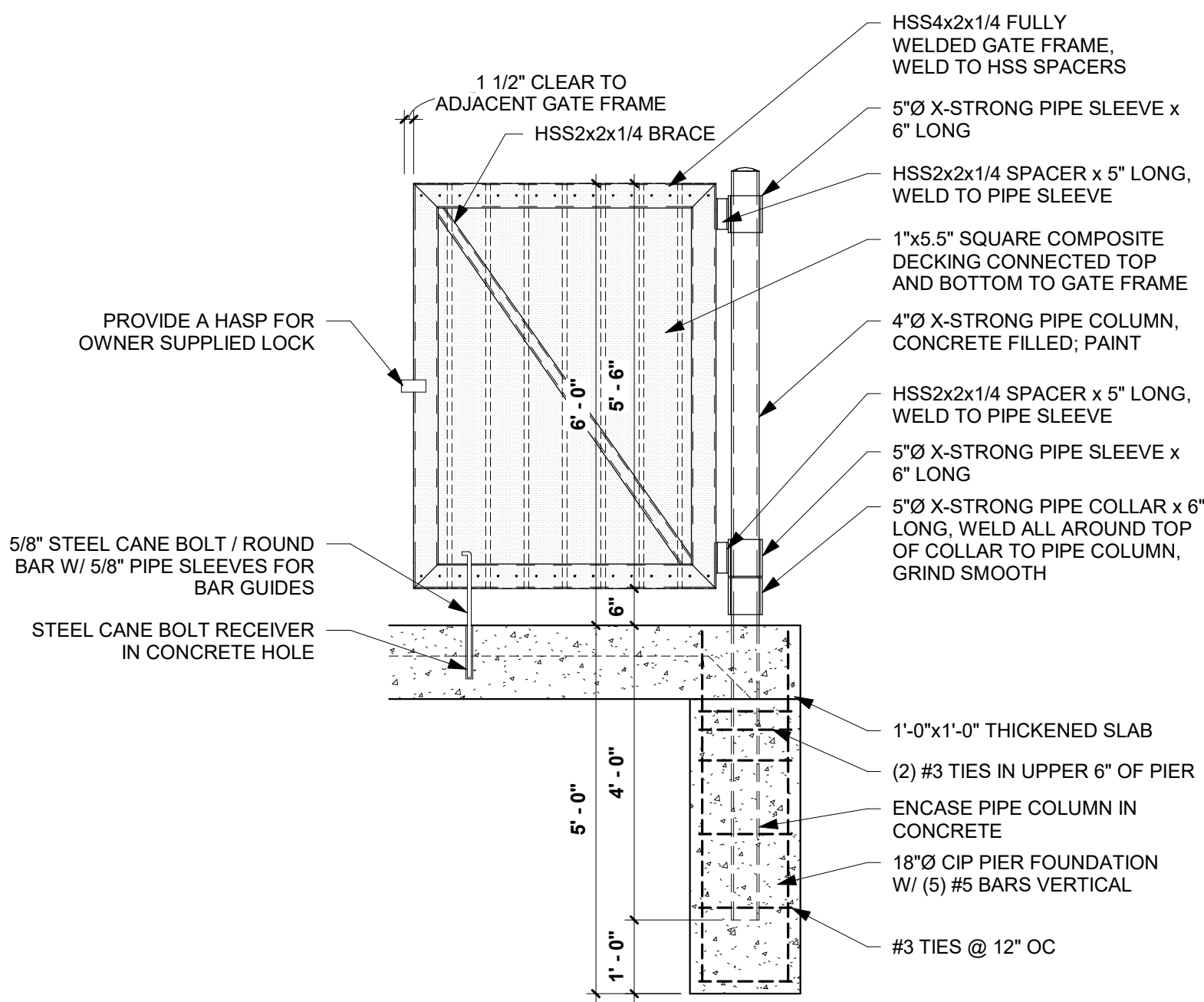
PROJECT NO.	
FILE NAME	
DRAWN BY	Author
DESIGNED BY	Designer
REVIEWED BY	Checker
ORIGINAL ISSUE DATE	
CLIENT PROJECT NO.	

TITLE
**TRASH
ENCLOSURE
& SCREEN**

SHEET



SIDE ELEVATION
1/2" = 1'-0"



TRASH ENCLOSURE GATE DETAIL
1/2" = 1'-0"



PRELIMINARY NOT FOR CONSTRUCTION