

**Agenda Item 25-0478 (Tim Acklin)**

Resolution to contest the WisDOT's proposed modifications, including closure, of the existing public railroad crossings at Liberty Street/St. Cloud Street and Avon Street/Hagar Street.

**General Location**

Aldermanic District 2, railroad crossings at the intersections of Avon and Hagar Streets and Liberty and St Cloud Streets just east of the Amtrak Depot.

**Background Information**

This Resolution opposes the Wisconsin Department of Transportation's petition to close to all vehicle access the intersection of Liberty Street & Saint Cloud Street at the crossing of the CPKC railroad, proposing to install four (4) cul-de-sacs and dead-end the streets. This would sever one of only two remaining at-grade crossings on the north side of La Crosse and would force all traffic to either the one remaining crossing or the adjacent State/U.S. Highways (via bridges).

**Recommendation of Other Boards and Commissions**

N/A

**Consistency with Adopted Comprehensive Plan**

The Comprehensive Plan recommends in Action 6-3 that the City work with WisDOT and local railroad operators to maintain the viability of existing rail corridors while protecting connectivity for existing neighborhoods.

The Bicycle and Pedestrian Master Plan prioritizes the development of the Avon Street Greenway, and the closure of the Liberty-St. Cloud intersection would be detrimental to its development.

The Safe Routes to School Plan establishes Avon Street as one of the few north-south connections for walking and bicycling to school for students living south of the railroad tracks.

The HWY 53 Corridor Study highlights Avon Street as a key connection for crossing the railroad tracks for people bicycling north-south and expresses the need for improved safe and convenient north-south and east-west crossings and access.

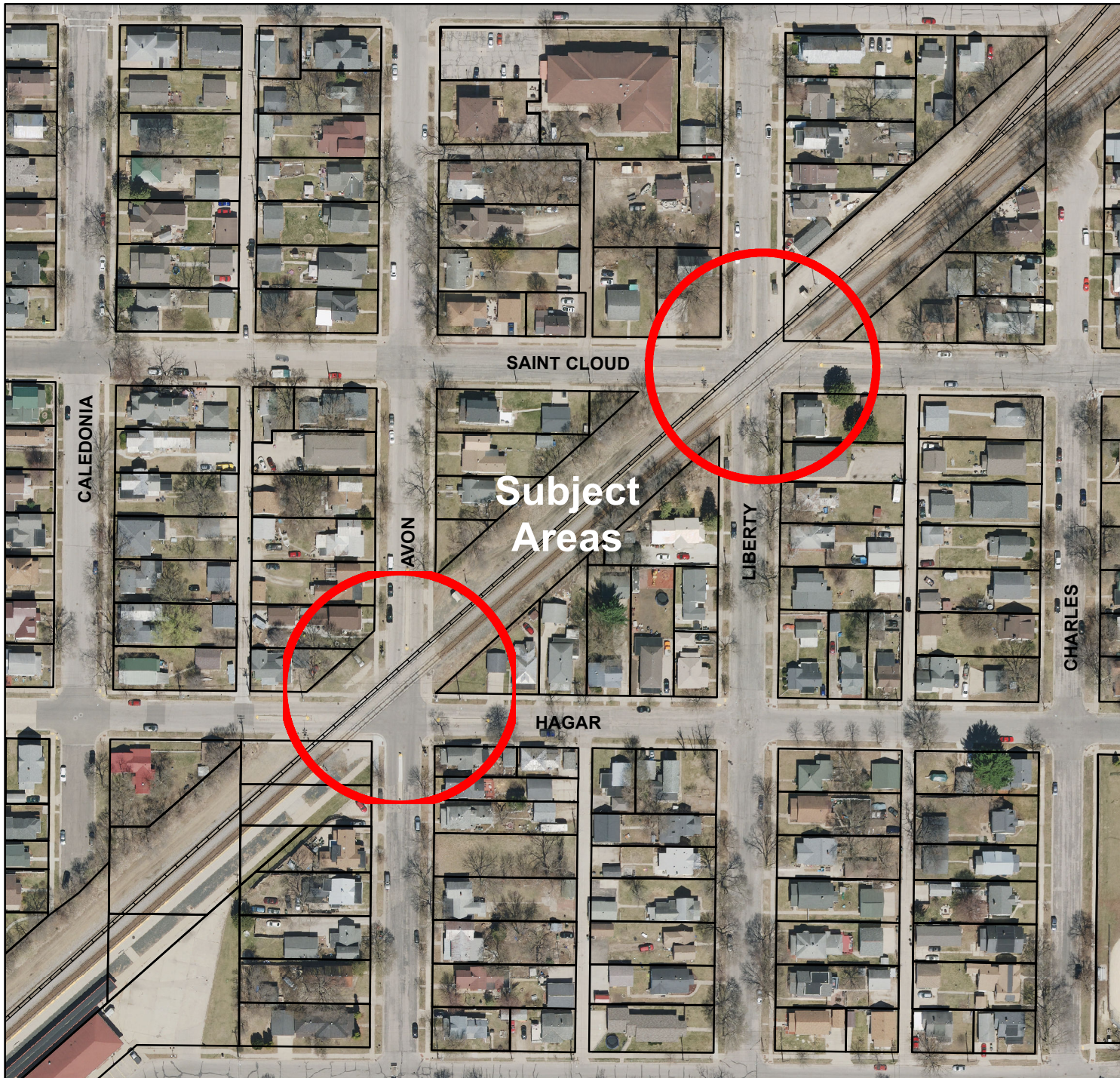
The 2015 Transportation Vision outlines the need for street network restoration, specifically referencing the goal to reconnect the City's street network at railways.

**Staff Recommendation**

This action by the WisDOT is not consistent with several of the City's adopted plans and staff **recommends approval** of this Resolution.

**Routing J&A 4.29.25**





## BASIC ZONING DISTRICTS

	R1 - SINGLE FAMILY
	R2 - RESIDENCE
	WR - WASHBURN RES
	R3 - SPECIAL RESIDENCE
	R4 - LOW DENSITY MULTI
	R5 - MULTIPLE DWELLING
	R6 - SPECIAL MULTIPLE
	PD- PLANNED DEVELOP
	TND - TRAD NEIGH DEV.
	C1 - LOCAL BUSINESS
	C2 - COMMERCIAL
	C3 - COMMUNITY BUSINESS
	M1 - LIGHT INDUSTRIAL
	M2 - HEAVY INDUSTRIAL
	PS - PUBLIC & SEMI-PUBLIC
	PL - PARKING LOT
	UT - PUBLIC UTILITY
	CON - CONSERVANCY
	FW - FLOODWAY
	A1 - AGRICULTURAL
	EA - EXCLUSIVE AG
	City Limits
	SUBJECT PROPERTY



0 80 160 320 Feet