

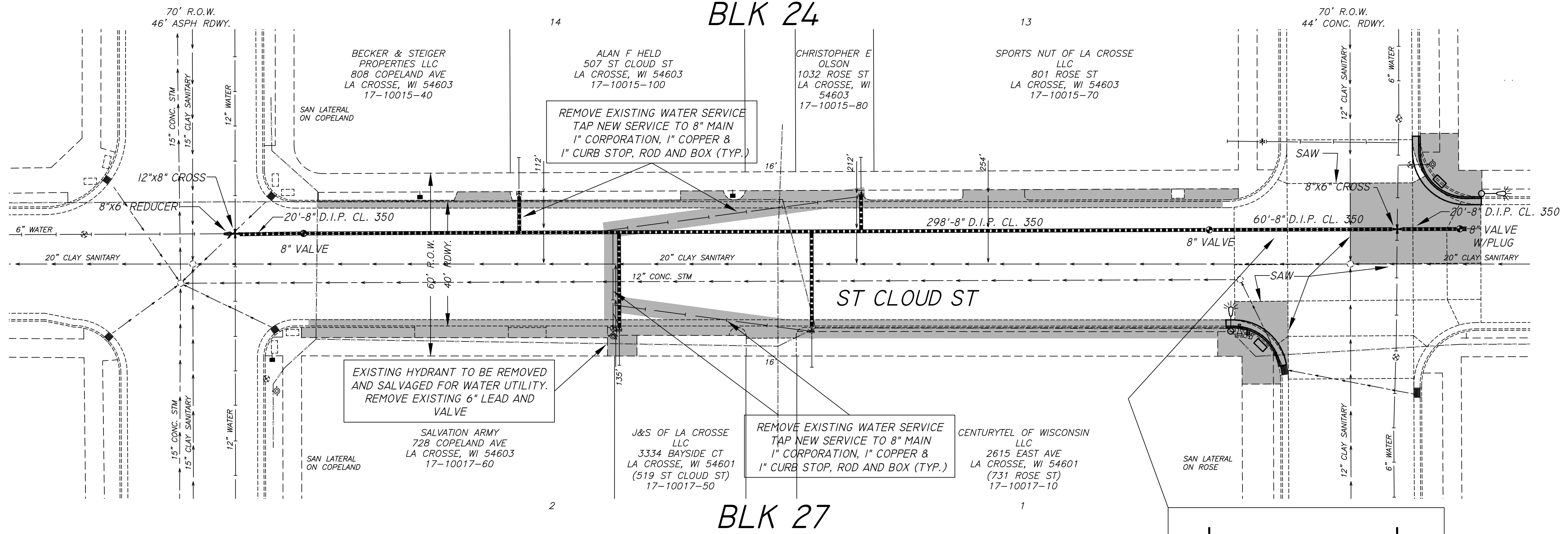
SCALE: 1"=20' H  
1"=2' V

ELEVATIONS SHOWN ARE  
NAVD 88

COPELAND AVE  
US HWY 53

NORTH LA CROSSE ADDN.  
BLK 24

ROSE ST  
US HWY 53

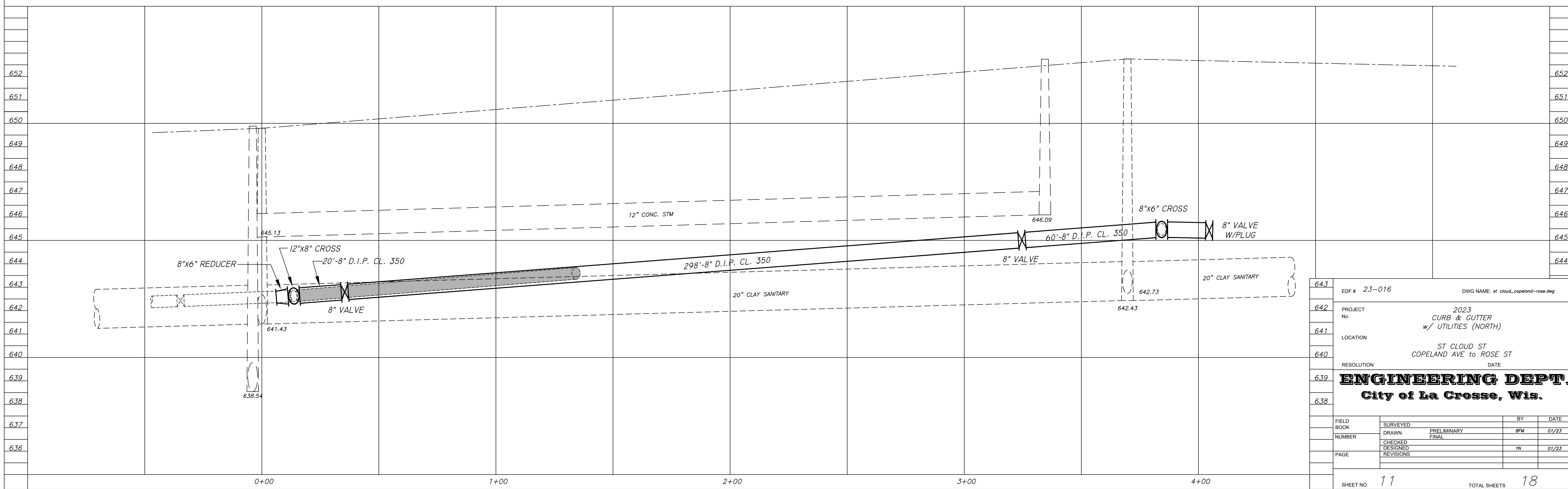


UTILITY QUANTITIES	
<b>QUANTITIES</b>	
388 L.F.	8" D.I.P. CLASS 350 CEMENT LINED WATER MAIN
1 EA.	12"x8" CROSS
1 EA.	8"x6" CROSS
3 EA.	8"x6" REDUCER
2 EA.	8" GATE VALVE
4 EA.	1" CORPORATION STOP
4 EA.	1" CURB STOP, ROD AND BOX
86 L.F.	1" COPPER "TYPE K" WATER SERVICE
1 L.S.	EROSION CONTROL
1 L.S.	TRAFFIC CONTROL

CURB & GUTTER	
<b>QUANTITIES</b>	
439 L.F.	STANDARD CURB & GUTTER INCLUDING 6" CRUSHED BASE
1180 S.F.	9" HIGH EARLY CONCRETE PAVEMENT
102 S.F.	7" CONCRETE ALLEY APPROACH
366 S.F.	6" CONCRETE DRIVEWAY
464 S.F.	5" CONCRETE SIDEWALK
2 EA.	TRUNCATED DOME WARNING FIELD
786 S.F.	4" CONCRETE FLATWORK
30 S.Y.	4" BLACK DIRT, SEED, FERTILIZER, HYDROMULCH
1 L.S.	EROSION CONTROL
1 L.S.	TRAFFIC CONTROL
<b>REMOVALS</b>	
439 L.F.	CURB & GUTTER
2831 S.F.	CONCRETE (ANY DEPTH)
280 L.F.	CONCRETE SAW

**NOTE**  
CONTRACTOR IS TO VERIFY LOCATION OF ALL UTILITIES PRIOR TO ANY CONSTRUCTION

TEMPORARY WATER SERVICES MUST BE MAINTAINED TO ALL AFFECTED PROPERTIES UNTIL NEW 1" SERVICE IS INSTALLED



643	EDF # 23-016	DWG NAME: st_cloud_copeland-rose.dwg
642	PROJECT No.	2023 CURB & GUTTER w/ UTILITIES (NORTH)
641	LOCATION	ST CLOUD ST COPELAND AVE to ROSE ST
640	RESOLUTION DATE	
639	<b>ENGINEERING DEPT.</b>	
638	<b>City of La Crosse, Wis.</b>	
637	FIELD BOOK	SURVEYED BY DATE
636	NUMBER	DRAWN PRELIMINARY 8/11 01/23
	PAGE	CHECKED DESIGNED REVISIONS 1/11 01/23
	SHEET NO. 11	TOTAL SHEETS 18