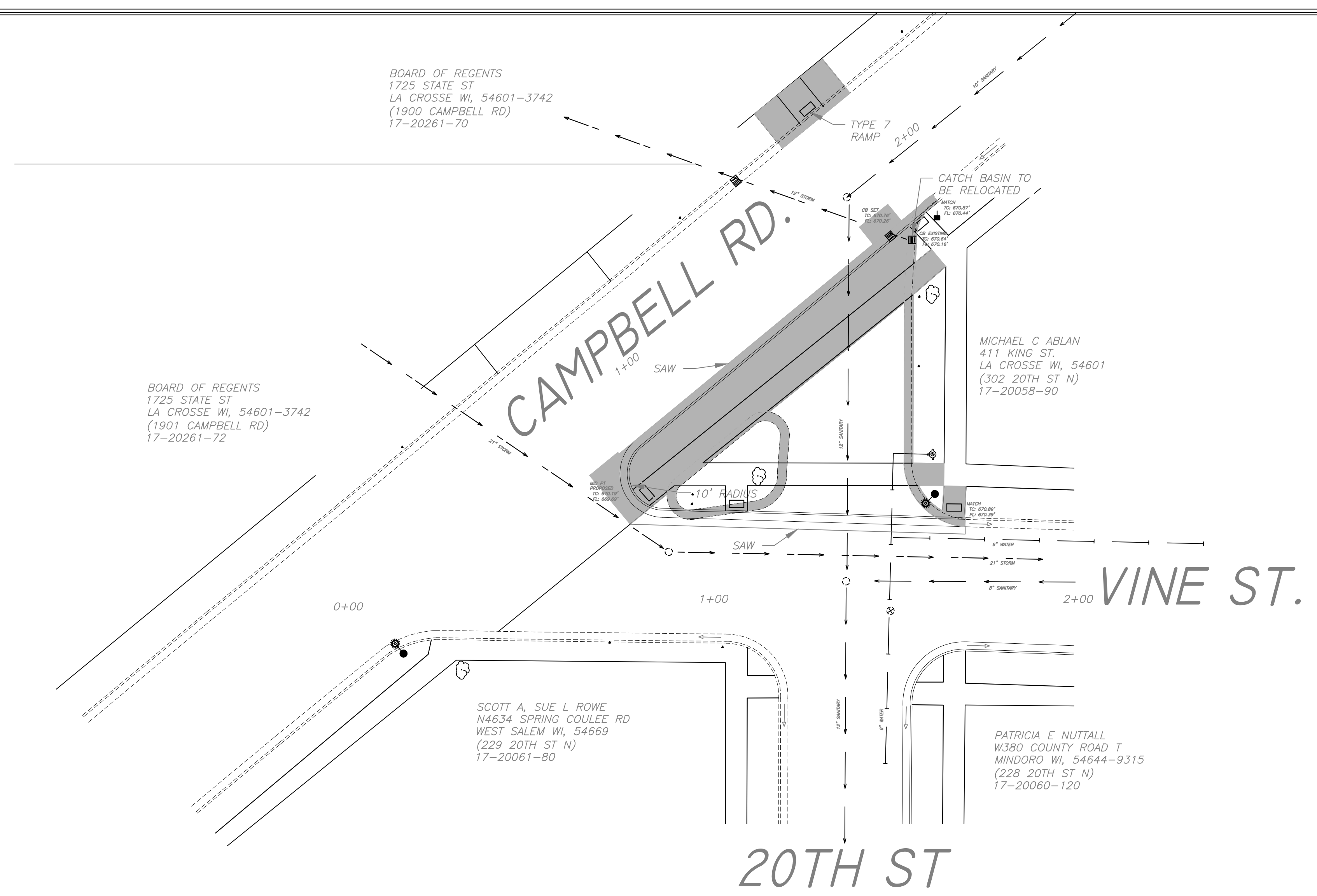


SCALE: 1"=20' H
1"=2' V
ELEVATIONS SHOWN ARE
NAVD 88



QUANTITIES

240	L.F. STANDARD CURB & GUTTER (INCLUDING 6" CRUSHED ROCK)
400	S.F. 5" CONCRETE HANDICAP RAMPS
5	EA TRUNCATED DOME WARNING FIELDS (2'X4')
1060	S.F. ENTRANCE SIDEWALK
300	S.F. 9" CONCRETE PAVEMENT
415	S.Y. DELIVER & INSTALL DREDGE SAND FILL (UP TO 12") FURNISHED BY CITY
1	L.S. EROSION CONTROL
355	S.Y. 4" BLACK DIRT, SEED, FERTILIZER, & MULCH

REMOVALS

200	L.F. CONCRETE CURB & GUTTER
2400	S.F. CONCRETE PAVEMENT (ANY THICKNESS)

STORM SEWER

1	EA RELOCATE COMPLETE CATCH BASIN
---	----------------------------------

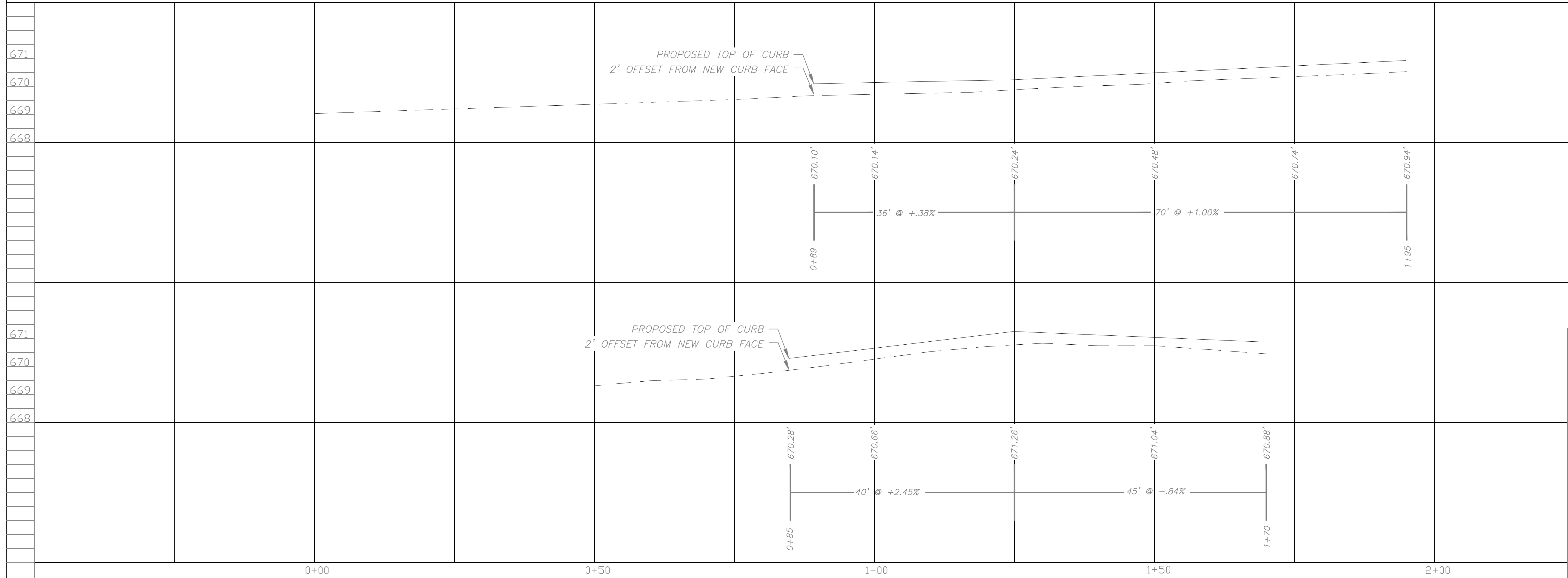
BENCHMARKS
TOP NUT OF HYDRANT

20TH ST & VINE ST.	674.00'
21ST ST & VINE ST.	673.56'

NOTE

- CONTRACTOR IS TO VERIFY LOCATION OF ALL UTILITIES PRIOR TO ANY CONSTRUCTION
- CONTRACTOR TO INSTALL AND MAINTAIN INLET PROTECTION PER DETAIL
- CITY WILL PROVIDE ANY NECESSARY REPLACEMENT CASTINGS NEEDED

0 10' 20' 40'



EDF #	16-001.05	DWG NAME:	Campbell Road Intersection 2016.dwg
PROJECT No.	CAMPBELL ROAD INTERSECTION		
LOCATION	20TH ST. N & VINE ST.		
RESOLUTION		DATE	
ENGINEERING DEPT. City of La Crosse, Wis.			
FIELD BOOK	SURVEYED	BY	DATE
NUMBER	DRAWN	PRELIMINARY	JWH 08/16/17
PAGE	CHECKED	FINAL	MS 08/16/17
	APPROVED		
	REVISIONS		
SHEET NO.	2	TOTAL SHEETS	3