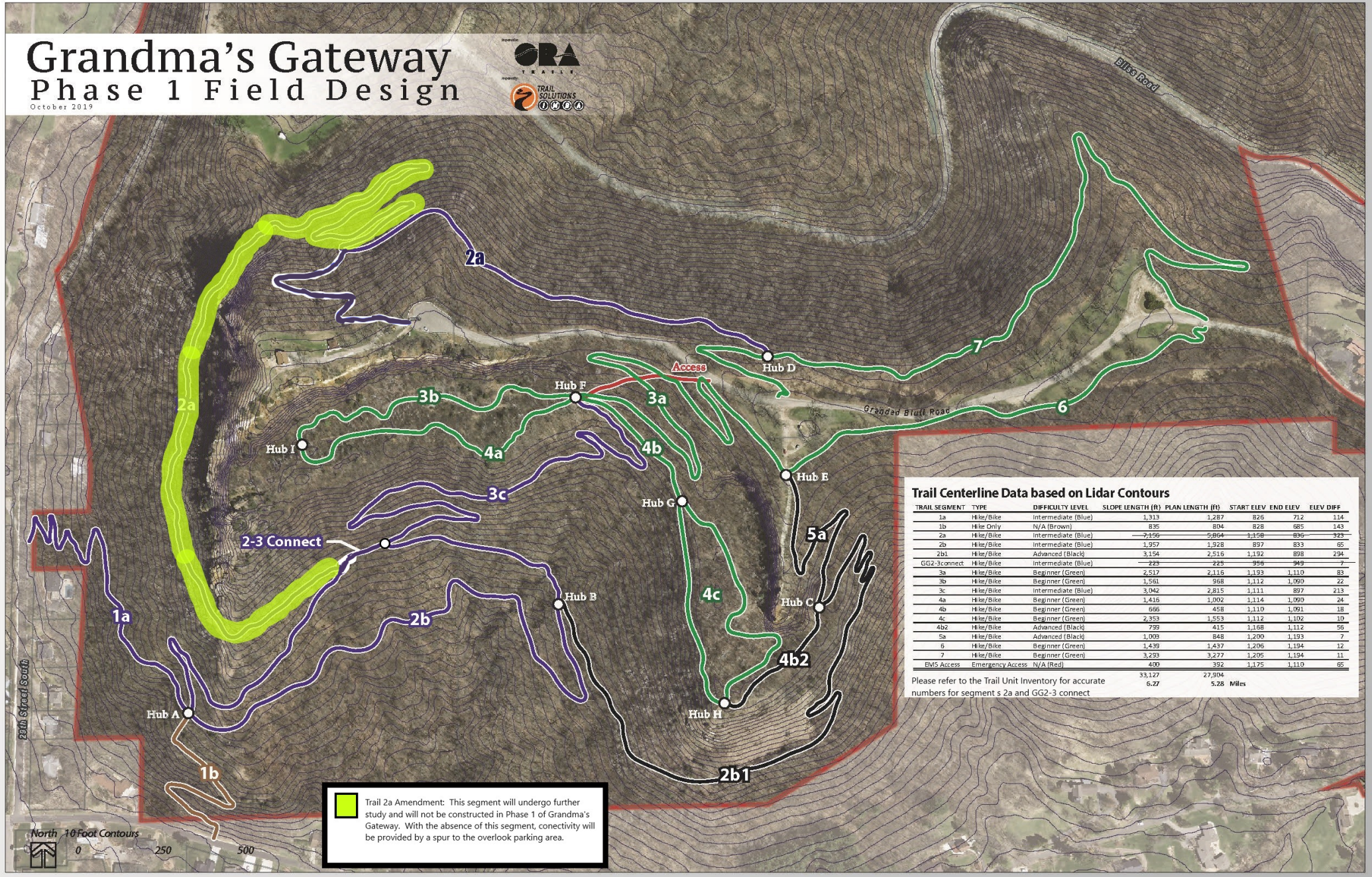


Grandma's Gateway Phase 1 Field Design

October 2019



Trail 2a Amendment: This segment will undergo further study and will not be constructed in Phase 1 of Grandma's Gateway. With the absence of this segment, connectivity will be provided by a spur to the overlook parking area.

Trail Centerline Data based on Lidar Contours

TRAIL SEGMENT	TYPE	DIFFICULTY LEVEL	SLOPE LENGTH (ft)	PLAN LENGTH (ft)	START ELEV	END ELEV	ELEV DIFF
1a	Hike/Bike	Intermediate (Blue)	1,313	1,287	826	712	114
1b	Hike Only	N/A (Brown)	835	804	828	685	143
2a	Hike/Bike	Intermediate (Blue)	7,156	5,864	1,158	836	322
2b	Hike/Bike	Intermediate (Blue)	1,957	1,928	897	833	65
2b1	Hike/Bike	Advanced (Black)	3,154	2,516	1,192	898	294
GG2-3connect	Hike/Bike	Intermediate (Blue)	225	225	956	949	7
3a	Hike/Bike	Beginner (Green)	2,517	2,116	1,193	1,110	83
3b	Hike/Bike	Beginner (Green)	1,561	968	1,112	1,050	62
3c	Hike/Bike	Intermediate (Blue)	3,042	2,815	1,111	897	213
4a	Hike/Bike	Beginner (Green)	1,415	1,002	1,114	1,090	24
4b	Hike/Bike	Beginner (Green)	666	458	1,110	1,091	18
4c	Hike/Bike	Beginner (Green)	2,353	1,553	1,112	1,102	10
4b2	Hike/Bike	Advanced (Black)	799	415	1,168	1,112	56
5a	Hike/Bike	Advanced (Black)	1,003	848	1,200	1,193	7
6	Hike/Bike	Beginner (Green)	1,439	1,437	1,206	1,194	12
7	Hike/Bike	Beginner (Green)	3,293	3,277	1,205	1,194	11
EMV Access	Emergency Access	N/A (Red)	400	392	1,175	1,110	65
			33,127	27,904			
			6.27	5.28	Miles		

Please refer to the Trail Unit Inventory for accurate numbers for segment s 2a and GG2-3 connect

28th Street South

