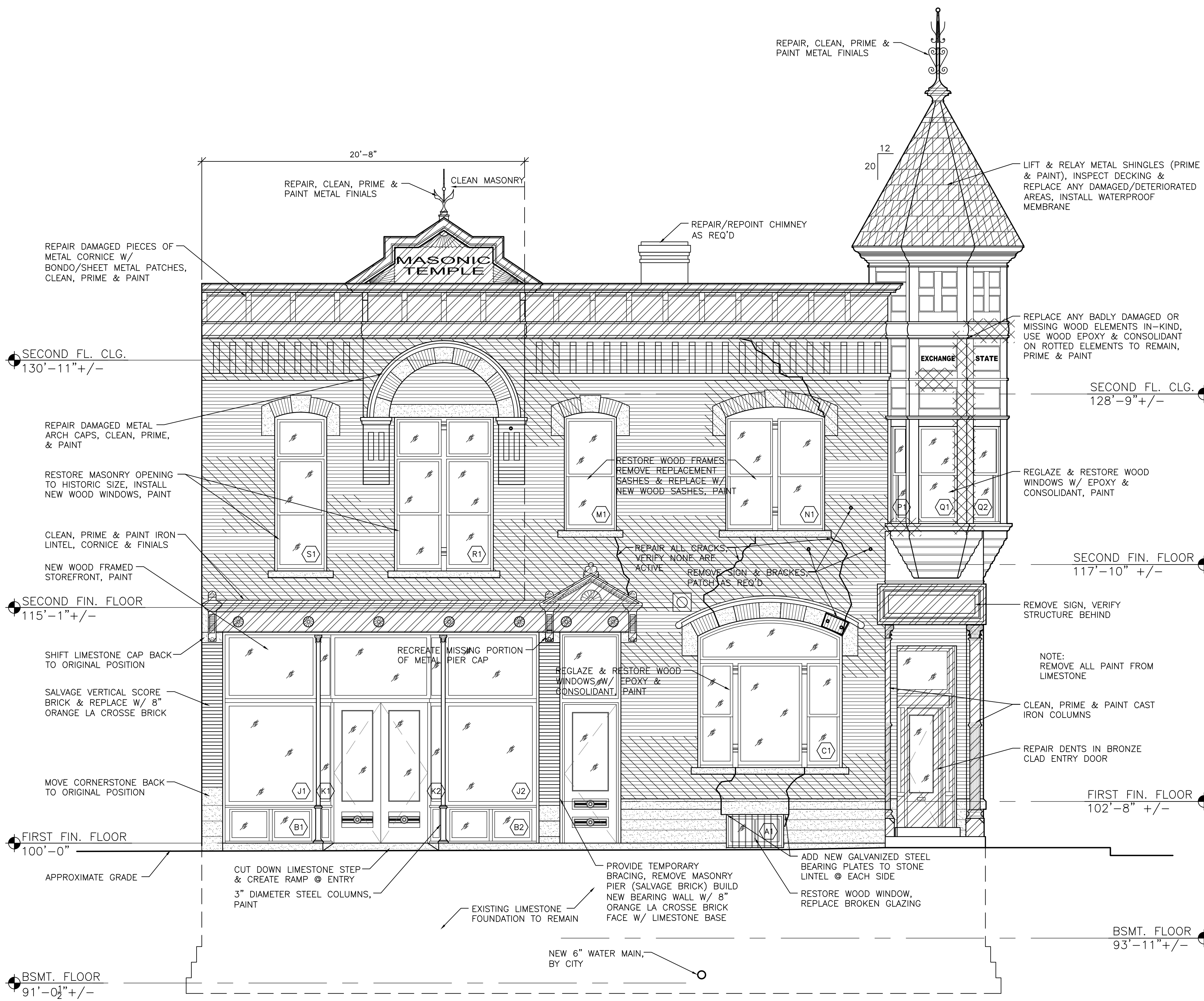


MARCUS ZETTLER,
ARCHITECT
1609 Mississippi Street
La Crosse, WI 54601
P: (608) 844-1208
E: MZettler0916@gmail.com

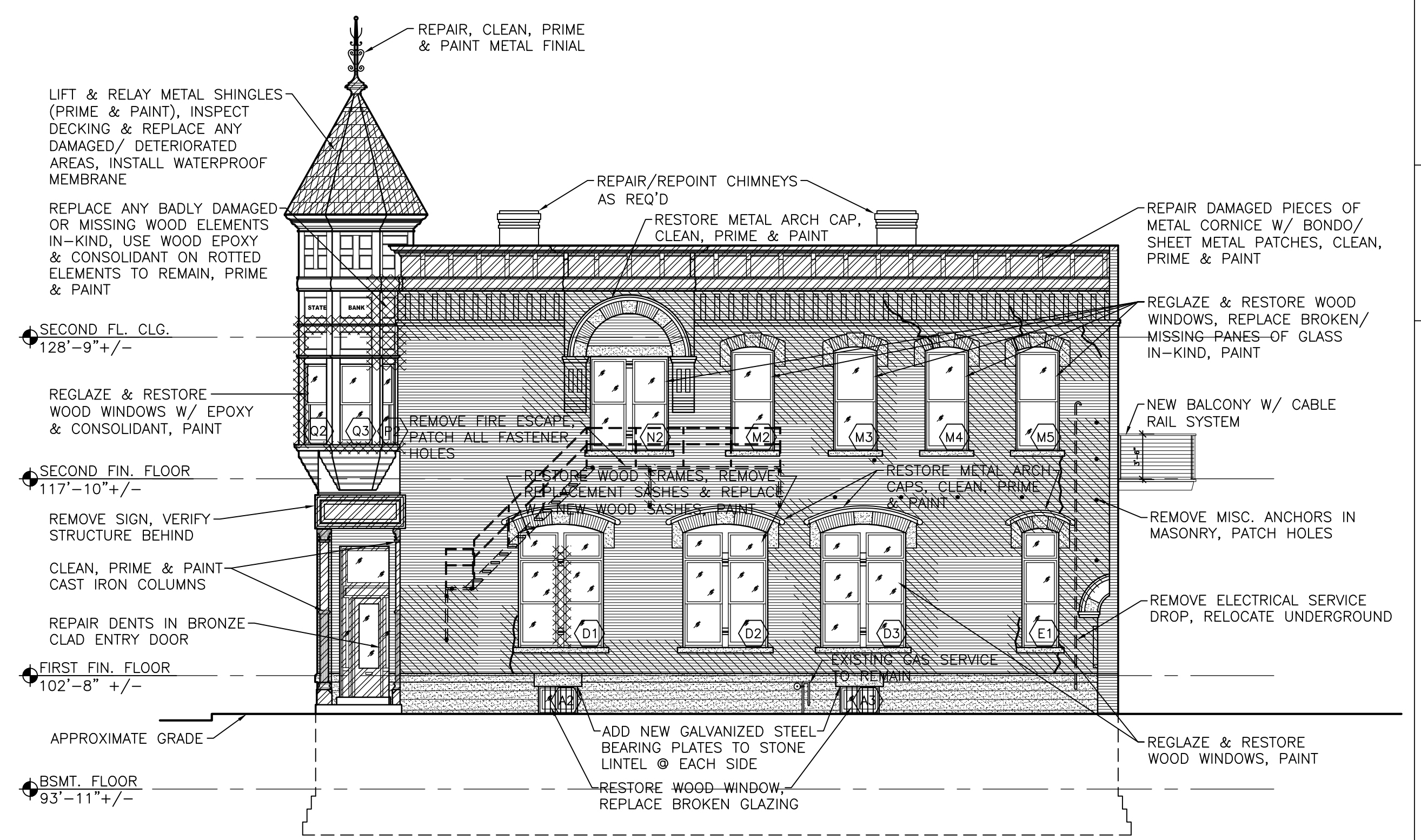
PROJECT FOR RMD DEVELOPMENT, LLC
REHABILITATION OF THE HISTORIC MASONIC TEMPLE/EXCHANGE STATE BANK
800 Rose Street
La Crosse, WI 54603
SHEET TITLE: EXTERIOR BUILDING ELEVATIONS

PROJECT NUMBER: 17001-A
CHECKED BY: M. ZETTLER
DRAWN BY: M. ZETTLER
DATE: 09/09/2017
NOT FOR CONSTRUCTION
THIS DRAWING IS THE PROPERTY OF THE DESIGN PROFESSIONAL AND SHALL REMAIN SO. WRITTEN CONSENT SHALL BE OBTAINED FROM THE DESIGNER PRIOR TO ANY USE OR REPRODUCTION OTHER THAN THAT SPECIFICALLY AGREED TO.
SHEET NO.:

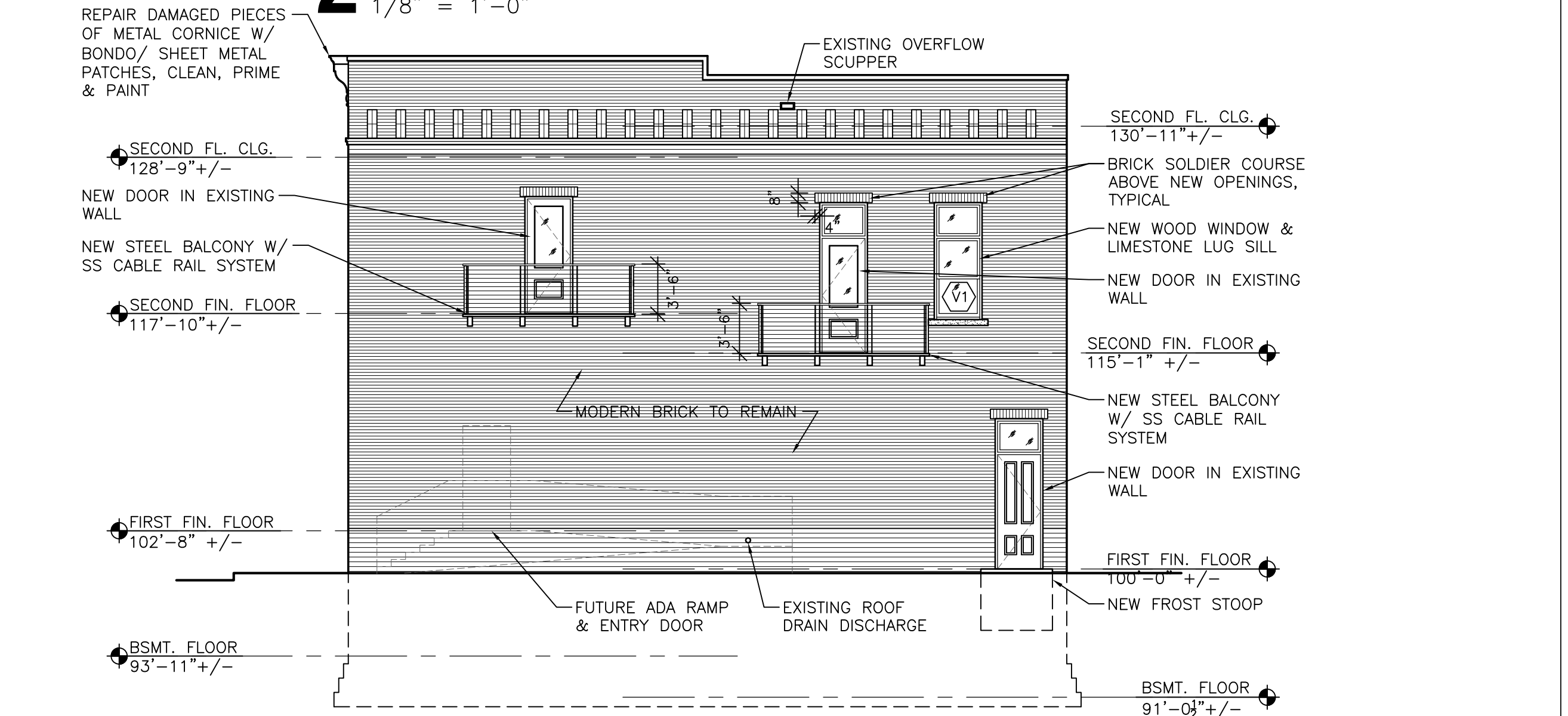
A200



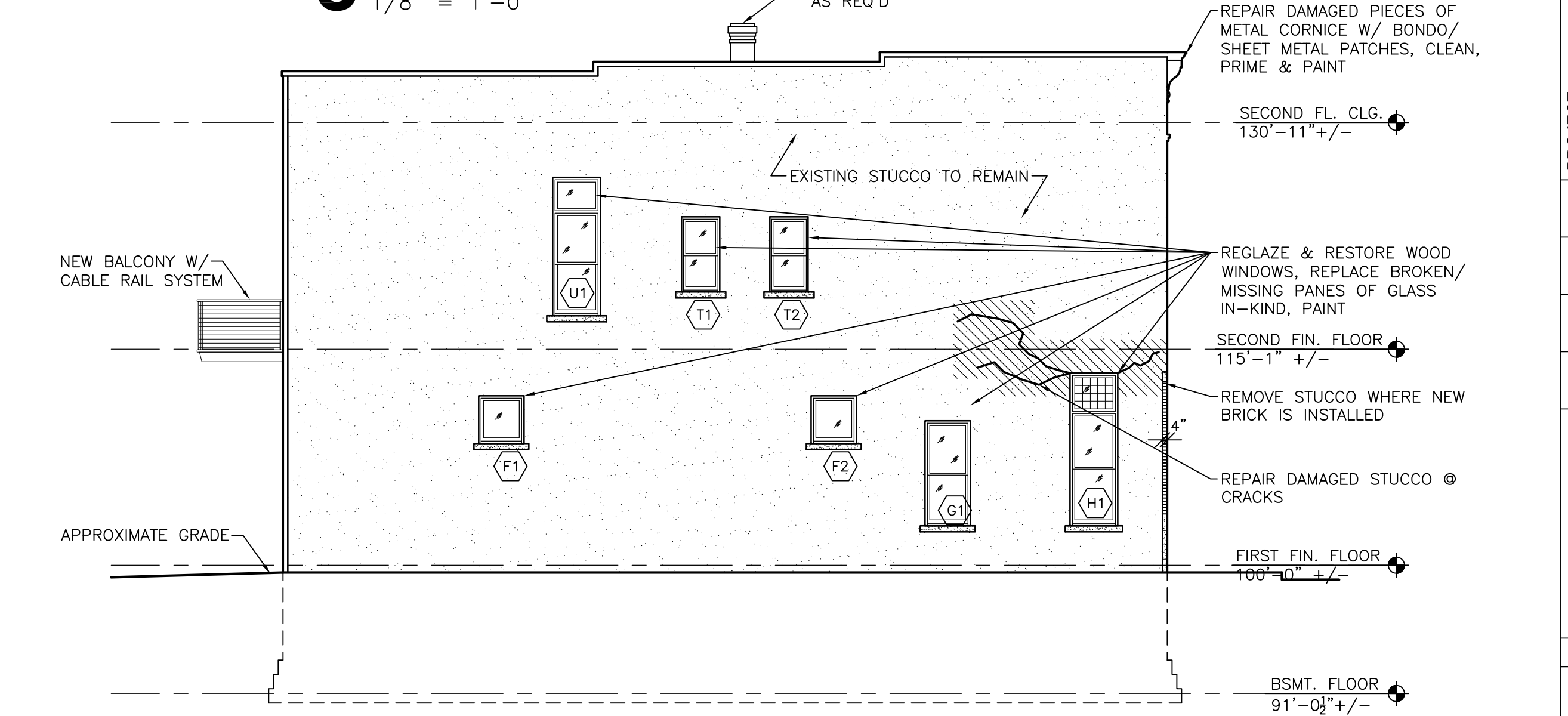
1 WEST (ROSE ST.) ELEVATION
1/4" = 1'-0"



2 SOUTH ELEVATION
1/8" = 1'-0"



3 EAST ELEVATION
1/8" = 1'-0"



4 NORTH ELEVATION
1/8" = 1'-0"

ELEVATION GENERAL NOTES:

- VERIFY SIZE AND LOCATIONS OF ALL MECH. OPENINGS. GENERAL CONTRACTOR TO SEAL LOUVER PERIMETER AND PAINT - TYPICAL.
- GENERAL CONTRACTOR SHALL FIELD VERIFY ALL DIMENSIONS PRIOR TO BEGINNING WORK AND SHALL NOTIFY THE ARCHITECT OF DISCREPANCIES BETWEEN ACTUAL AND CALLED DIMENSIONS.
- G.C. TO PROVIDE CONC EQUIPMENT PADS/CURBS AS REQUIRED FOR MECH/ELECTRICAL EQUIP. VERIFY SIZE/PROFILE/LOCATION W/ MECH/ELEC. FOR HVAC UNIT. SEE MECH./ELEC. PLANS
- ALL EXTERIOR WALLS SHALL HAVE A 2 HOUR FIRE RATING
- REMOVE ALL PAINT - CLEAN MASONRY.
- REMOVE ALL VEGETATIVE GROWTH, MISC ANCHORS, BOLTS, FASTENERS, SIGN REMNANTS - PATCH MASONRY.

MATERIAL LEGEND:	
	BRICK
	LIMESTONE
	MASONRY AREAS TO BE TUCKPOINTED (TYPE 'O' MORTAR)
	METAL SHINGLES
	STUCCO
	METAL

BRICK SIZE: (INCHES)
 HISTORIC (EAST WALL) 2 1/4 x 8 x 4
 MODERN (EAST WALL) 2 1/4 x 7 1/2 x 3 3/8
 JUMBO (EAST WALL) 3 3/8 x 11 1/2 x 3 3/8

MORTAR JOINTS: (INCHES)
 ALL JOINTS EXCEPT HISTORIC HEAD JOINTS ARE 3/8"
 HISTORIC HEAD JOINTS ARE 1/2"