



METRONET WILL MAINTAIN 5' CLEARANCE FROM EXISTING INLETS, MANHOLES, VALVES, AND FIRE HYDRANTS & 7.5' CLEARANCE FROM MANHOLES AND CATCH BASINS.
 PRIOR TO CONSTRUCTION ALL TRAFFIC SIGNAL WIRING AT THE INTERSECTION MUST BE PROPERLY LOCATED.

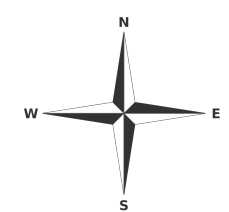


Drawn By
Frank Summers

Revised
 Feb 26,
 2024

Drawing Title
 WILC-FR03
 Underground
 Route

Description
 Overview







GENERAL CONSTRUCTION NOTES

1. ALL UNDERGROUND WILL BE STANDARD (2) 1-1/4" I.D. SDR=13.5 ROLLED DUCT UNLESS OTHERWISE SPECIFIED WITHIN DESIGN DRAWINGS OR APPROVED BY METRONET (MNT) CONSTRUCTION MANAGER. IF THERE IS NO DUCT/CONDUIT SYMBOL ALONG TRENCH LINE IN DESIGN, THE TRENCH FOOTAGE IS ONLY FOR REFERENCE FOR FUTURE GROWTH AND SHOULD NOT BE BUILT UNTIL A REVISION IS RELEASED.
2. ALL AERIAL STRAND WILL BE SHOWN IN DESIGN AS IN THE LEGEND. NON STRAND SHALL NOT BE STRANDED UNLESS NOTED ON DRAWING FOR ANCHOR PLACEMENT.
3. THE CONTRACTOR SHALL BE RESPONSIBLE FOR LOCATING ALL UTILITIES 72-HOURS PRIOR TO CONSTRUCTION. IN CASES OF WILLFUL OR CARELESS DESTRUCTION, THE CONTRACTOR SHALL BE RESPONSIBLE FOR RESTORATION WITH FINAL APPROVAL FROM METRONET CONSTRUCTION MANAGER.
4. THE CONTRACTOR SHALL BE RESPONSIBLE FOR LOCATING ALL RAILROAD COMMUNICATION AND SIGNAL CABLES A MINIMUM OF 48-HOURS PRIOR TO CONSTRUCTION.
5. ALL HANDHOLES SHALL BE BURIED WITH THE COVER FLUSH TO THE GROUND ELEVATION.
6. SHORING MAY BE REQUIRED AND SHALL COMPLY WITH O.S.H.A. STANDARDS.
7. THE CONTRACTOR SHALL IMMEDIATELY NOTIFY THE METRONET CONSTRUCTION MANAGER OF ANY ACCIDENTS. THE CONTRACTOR SHALL BE SOLELY RESPONSIBLE FOR COMPLYING WITH ALL FEDERAL, STATE AND LOCAL SAFETY REQUIREMENTS INCLUDING THE OCCUPATIONAL SAFETY AND HEALTH ACT OF 1970. THE CONTRACTOR SHALL ALWAYS EXERCISE CAUTION FOR THE PROTECTION OF PERSONS (INCLUDING EMPLOYEES) AND PROPERTY. IT SHALL BE THE SOLE RESPONSIBILITY OF THE CONTRACTOR TO INITIATE, MAINTAIN AND SUPERVISE ALL SAFETY REQUIREMENTS, PRECAUTIONS AND PROGRAMS IN CONNECTION WITH THE WORK, INCLUDING THE REQUIREMENTS FOR CONFINED SPACES.
8. THE CONTRACTOR SHALL BE RESPONSIBLE FOR ALL PROPERTY DAMAGE OR DISTURBED AREAS, BOTH RESIDENTIAL, AND/OR COMMERCIAL DURING CONSTRUCTION. THE CONTRACTOR SHALL BE RESPONSIBLE FOR ALL RESTORATIONS TO EQUAL OR BETTER CONDITION THAN EXISTED BEFORE CONSTRUCTION. ADDITIONALLY, NON-RUBBER TIRED VEHICLES SHALL NOT BE MOVED ON OR ACROSS PUBLIC STREETS OR HIGHWAYS WITHOUT WRITTEN PERMISSION OF METRONET.
9. THE CONTRACTOR WILL BE RESPONSIBLE FOR DAILY WORK SITE CLEANUP. TRACKING OF SPILLING MUD, DIRT OR DEBRIS UPON STREETS, RESIDENTIAL OR COMMERCIAL DRIVES, SIDEWALKS OR BIKE PATHS IS PROHIBITED. ANY SUCH OCCURRENCE SHALL BE CLEANED UP IMMEDIATELY BY THE CONTRACTOR AT NO COST TO METRONET. IF THE CONTRACTOR FAILS TO REMOVE SUCH MUD, DIRT, DEBRIS OR SPILLAGE, METRONET RESERVES THE RIGHT TO REMOVE THESE MATERIALS AND CLEAN AFFECTED AREAS, THE COST OF WHICH SHALL BE THE RESPONSIBILITY OF THE CONTRACTOR.
10. CONTRACTOR SHALL FOLLOW ALL D.O.T. SAFETY REQUIREMENTS. IN ADDITION, THE FOLLOWING SUPPLEMENTAL REFERENCED SPECIFICATIONS SHALL BE OBSERVED:
 - i. Occupational Safety and Health Code (OSHA) – (latest edition).
 - ii. Applicable power and telephone pole attachment agreements.
 - iii. Applicable city, county and state ordinances.
 - iv. National Electric Safety Code (latest edition).
 - v. National Electric Code (latest edition).
 - vi. Applicable government agencies for safety and health for the work force.
 - vii. Manufacturer's specifications.
11. THE CONTRACTOR SHALL TRIM ONLY THE LIMBS THAT INHIBIT FIBER OPTIC CABLE PLACEMENT AND IN ACCORDANCE WITH LOCAL GOVERNING AGENCY. ALL SIGNS, LANDSCAPING, STRUCTURES OR OTHER APPURTENANCES WITHIN THE RIGHT OF WAY WHICH IS DISTURBED OR DAMAGED DURING CONSTRUCTION SHALL BE REPLACED OR REPAIRED TO THE SATISFACTION OF METRONET AND THE GOVERNING JURISDICTIONAL AUTHORITY. THE COST OF THIS WORK SHALL BE THE RESPONSIBILITY OF THE CONTRACTOR.
12. THE CONTRACTOR SHALL PLACE BARRICADES AROUND OPEN TRENCHES AND EQUIPMENT.
13. NO ADDITIONAL CABLE CUTS WILL BE ADDED WITHOUT PRIOR APPROVAL OF THE METRONET CONSTRUCTION MANAGER. SHOULD THE FIBER WORK NEED TO BE CONTINUED TO THE NEXT DAY AND THE FIBER LEFT OVERNIGHT, THE SECURITY OF THE FIBER SHALL BE THE RESPONSIBILITY OF THE CONTRACTOR.
14. ALL WORK TO BE PERFORMED IN STRICT ACCORDANCE WITH ALL REQUIREMENTS OF ANY REGULATING GOVERNMENT AGENCY OR THE RIGHT OF WAY GRANTOR. MUNICIPAL, COUNTY, STATE OR FEDERAL REGULATIONS MAY ALTER CONSTRUCTION SPECIFICATIONS IN SOME AREAS. IF CONTRACTOR REQUESTS A DEVIATION FROM THE CONSTRUCTIONS SPECIFICATIONS, SUCH REQUEST MUST BE DONE IN WRITING. NO WORK SHALL PROCEED WITH SUCH DEVIATION UNTIL CONTRACTOR HAS RECEIVED APPROVAL FROM METRONET AND ANY AFFECTED JURISDICTIONAL AUTHORITY WHEN APPLICABLE.
15. THE OWNER RESERVES THE RIGHT TO CHANGE OR REVISE THE CONSTRUCTION SPECIFICATIONS TO ADAPT TO LOCAL CONDITIONS OR DATA NECESSARY TO SECURE COMPLETION OF THE WORK. IN SUCH CASE, THE CONTRACTOR SHALL BE NOTIFIED IN WRITING.
16. IN CASE OF DISCREPANCY OR OMISSIONS, METRONET SHALL BE CONSULTED FOR ADJUSTMENTS OF ANY COMPLICATIONS RESULTING FROM THE DISCREPANCY OR OMISSION.
17. THE CONTRACTORS WORK SHALL INCLUDE BUT IS NOT LIMITED TO, UNLOADING, HAULING, STORING AND PROTECTING ALL METRONET FURNISHED MATERIAL FROM THE DELIVERY POINT THROUGH FINAL ACCEPTANCE OF THE WORK.
18. THE CONTRACTOR SHALL PROVIDE, CONSTRUCT AND MAINTAIN ALL ACCESS ROADS, ACCESS ROAD IMPROVEMENTS, FENCES AND GATES REQUIRED BY THE CONTRACTOR IN THE EXECUTION OF THE WORK.
19. THE CONTRACTOR SHALL BE RESPONSIBLE FOR ALL LOADING AND UNLOADING REQUIRED TO RETURN ANY MATERIALS TO METRONET. METRONET SHALL ISSUE SPECIFIC INSTRUCTIONS FOR THE RETURN OF THE MATERIAL BY THE CONTRACTOR.
20. THE CONTRACTOR SHALL BE RESPONSIBLE FOR HAVING A SUPERVISOR ON-SITE AT ALL TIMES. METRONET RESERVES THE RIGHT TO INSPECT THE WORK FOR COMPLIANCE AND DEFECTS.

Directional Bore

- 4 - 1.25" conduits
- 288 - count Fiber Cable
- 14 - Handholes 30x48x24
- B Utility Boxes 17x30x18
- Terminal Boxes 13x24x15
- Drop Boxes 11x11x12

-  -Drop Box
-  -Terminal Box
-  -HandHole
-  -B Utility Box

Proposed Fiber Route

ROW/Property Boundry

Water

Sanitary

Storm

Total Underground footage
feet



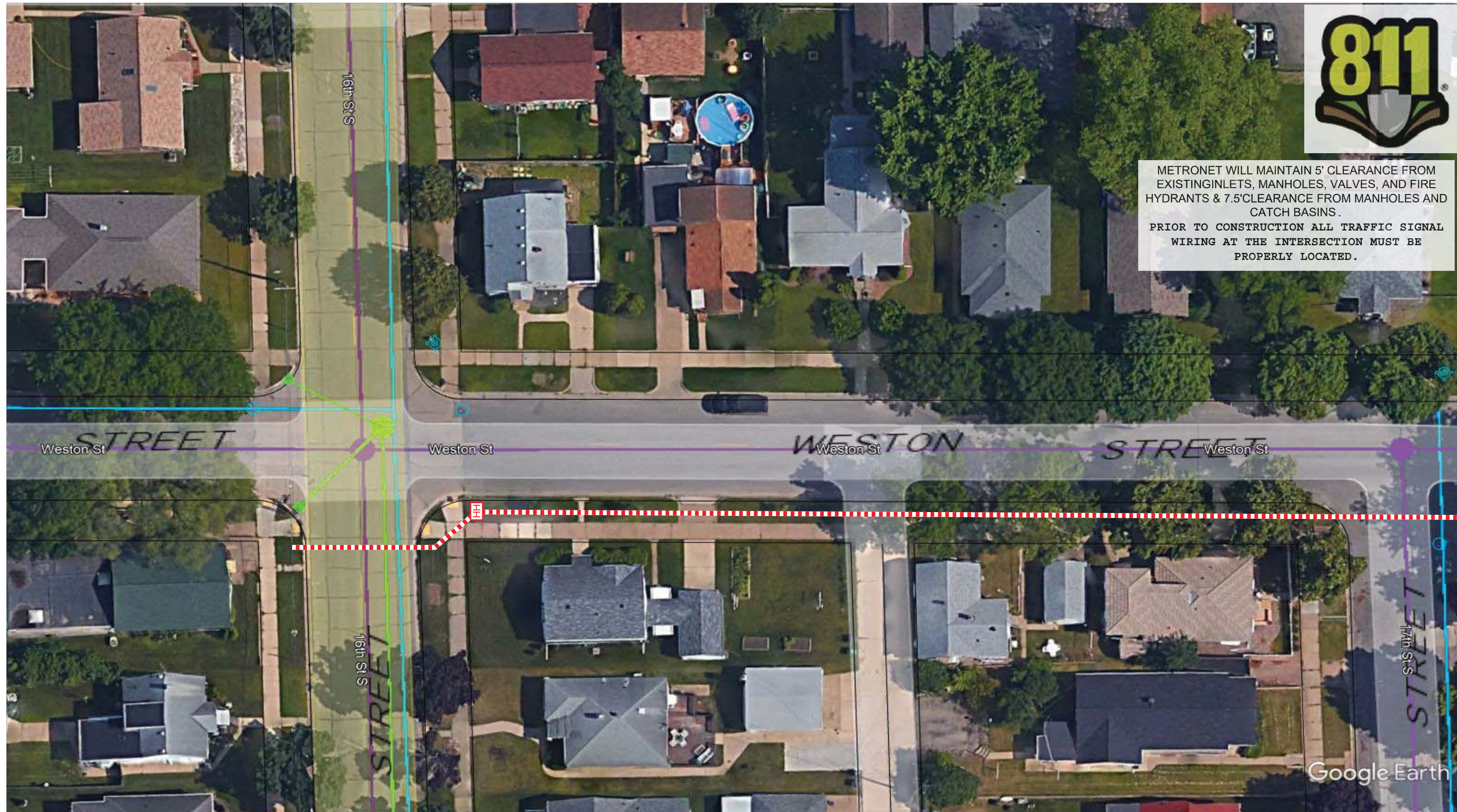
Drawn By
Frank Summers

Revised
Feb. 26
2024





METRONET WILL MAINTAIN 5' CLEARANCE FROM EXISTING INLETS, MANHOLES, VALVES, AND FIRE HYDRANTS & 7.5' CLEARANCE FROM MANHOLES AND CATCH BASINS.
 PRIOR TO CONSTRUCTION ALL TRAFFIC SIGNAL WIRING AT THE INTERSECTION MUST BE PROPERLY LOCATED.



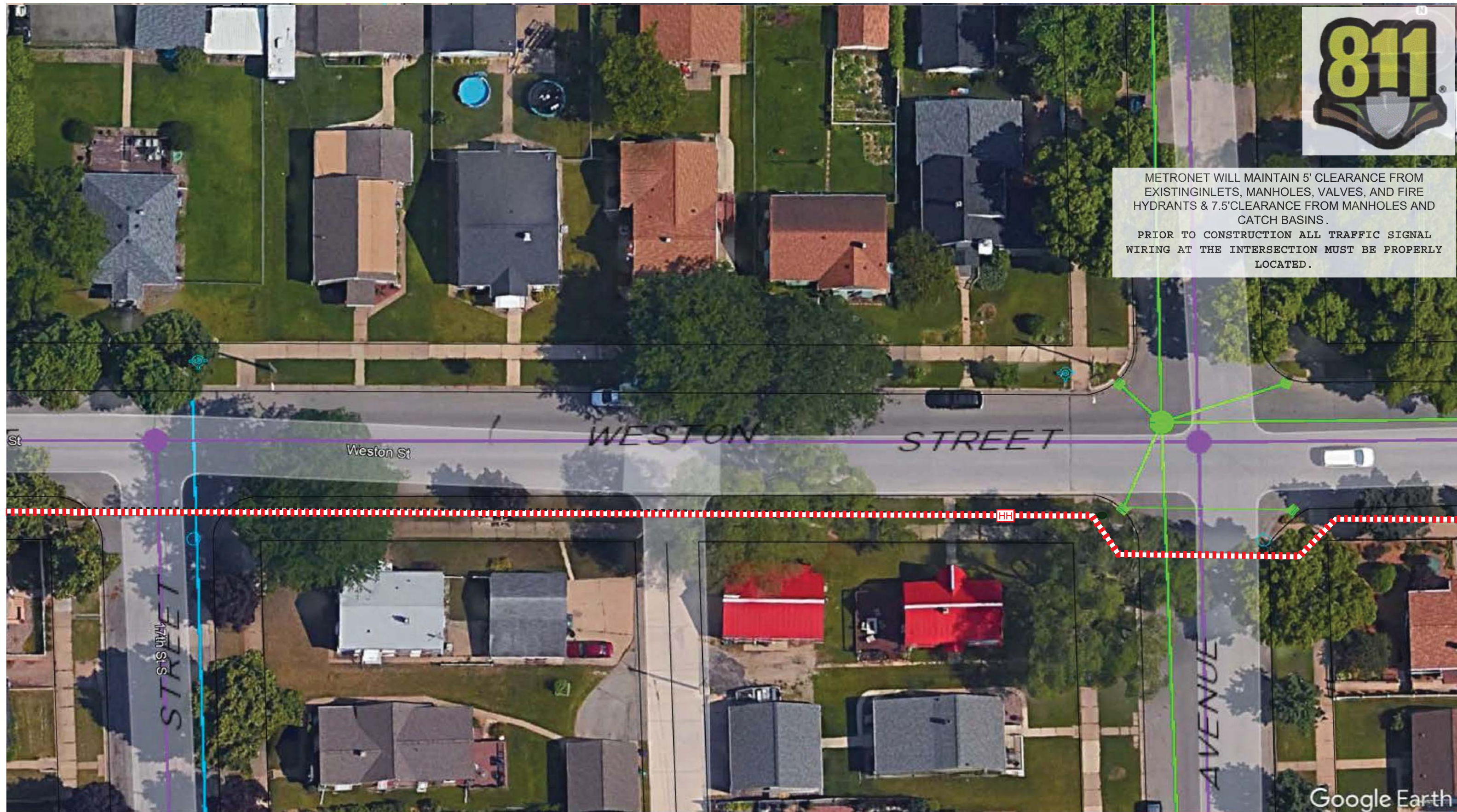
Google Earth

	<p>Drawn By <i>Frank Summers</i></p>	<p>Revised Feb 26, 2024</p>	<p>Drawing Title WILC-FR03 Underground Route</p>	<p>Description 16th St. to 17th St. South of Weston St.</p>		<p>Page 1</p>
--	---	--	---	--	--	---------------------------------



METRONET WILL MAINTAIN 5' CLEARANCE FROM EXISTING INLETS, MANHOLES, VALVES, AND FIRE HYDRANTS & 7.5' CLEARANCE FROM MANHOLES AND CATCH BASINS.

PRIOR TO CONSTRUCTION ALL TRAFFIC SIGNAL WIRING AT THE INTERSECTION MUST BE PROPERLY LOCATED.

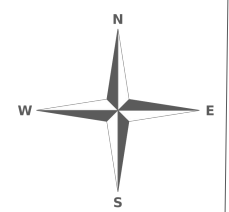


Drawn By
Frank Summers

Revised
Feb 26,
2024

Drawing Title
WILC-FR03
Underground
Route

Description
West of 17th St to East of East Ave.
South of Weston St.



Page
2



METRONET WILL MAINTAIN 5' CLEARANCE FROM EXISTING INLETS, MANHOLES, VALVES, AND FIRE HYDRANTS & 7.5' CLEARANCE FROM MANHOLES AND CATCH BASINS.

PRIOR TO CONSTRUCTION ALL TRAFFIC SIGNAL WIRING AT THE INTERSECTION MUST BE PROPERLY LOCATED.

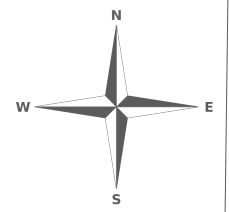


Drawn By
Frank Summers

Revised
Feb 26,
2024

Drawing Title
WILC-FR03
Underground
Route

Description
West of East Ave. to East of 19th St.
South of Weston St.



Page
3



METRONET WILL MAINTAIN 5' CLEARANCE FROM EXISTING INLETS, MANHOLES, VALVES, AND FIRE HYDRANTS & 7.5' CLEARANCE FROM MANHOLES AND CATCH BASINS.

PRIOR TO CONSTRUCTION ALL TRAFFIC SIGNAL WIRING AT THE INTERSECTION MUST BE PROPERLY LOCATED.



Google Earth

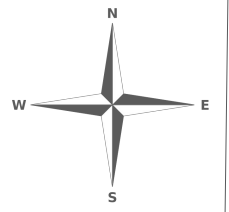


Drawn By
Frank Summers

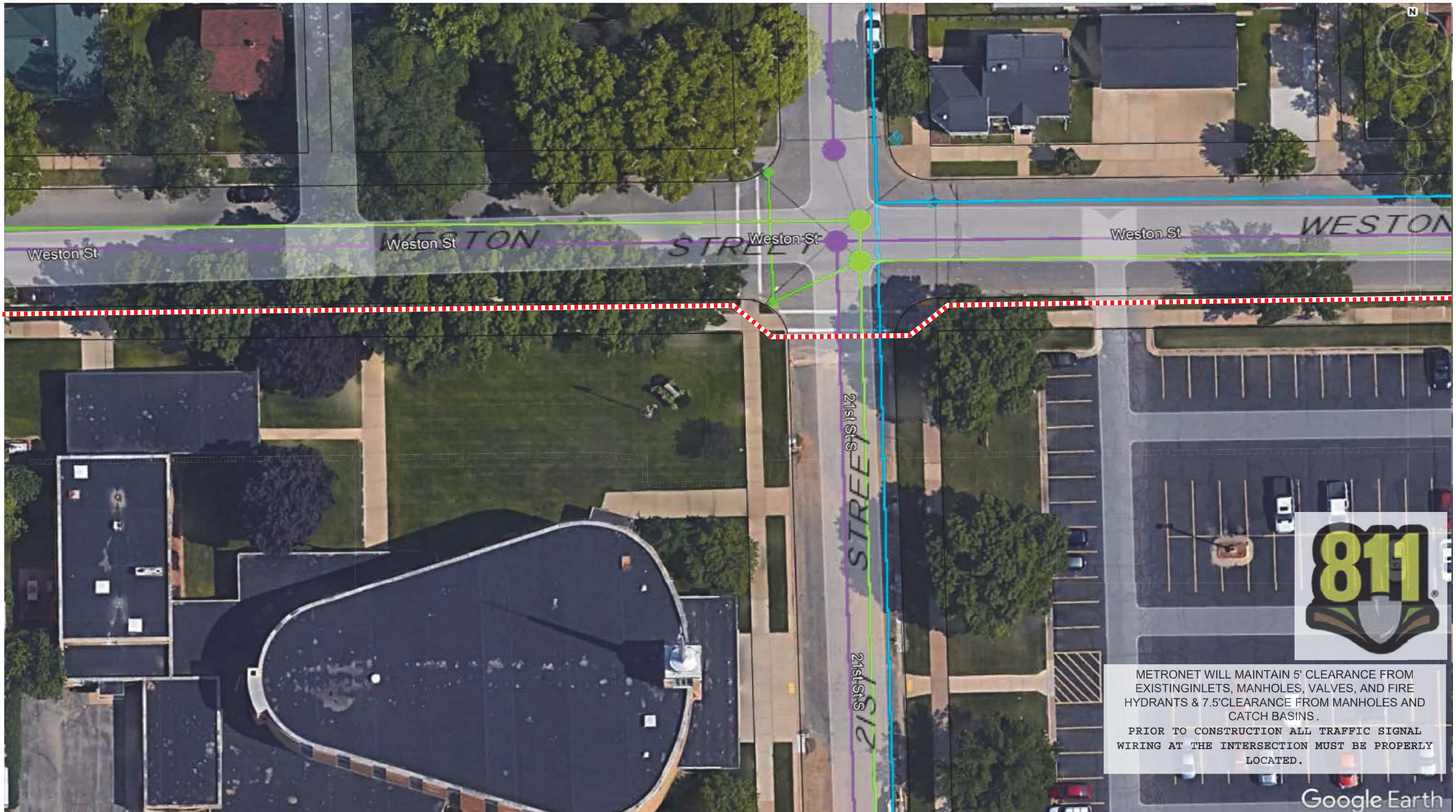
Revised
Feb 26,
2024

Drawing Title
WILC-FR03
Underground
Route

Description
West of 19th St to East of 20th St.
South of Weston St.



Page
4



METRONET WILL MAINTAIN 5' CLEARANCE FROM EXISTING INLETS, MANHOLES, VALVES, AND FIRE HYDRANTS & 7.5' CLEARANCE FROM MANHOLES AND CATCH BASINS.
 PRIOR TO CONSTRUCTION ALL TRAFFIC SIGNAL WIRING AT THE INTERSECTION MUST BE PROPERLY LOCATED.



Google Earth

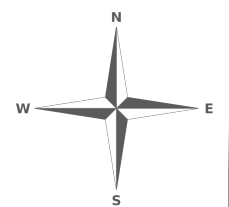


Drawn By
Frank Summers

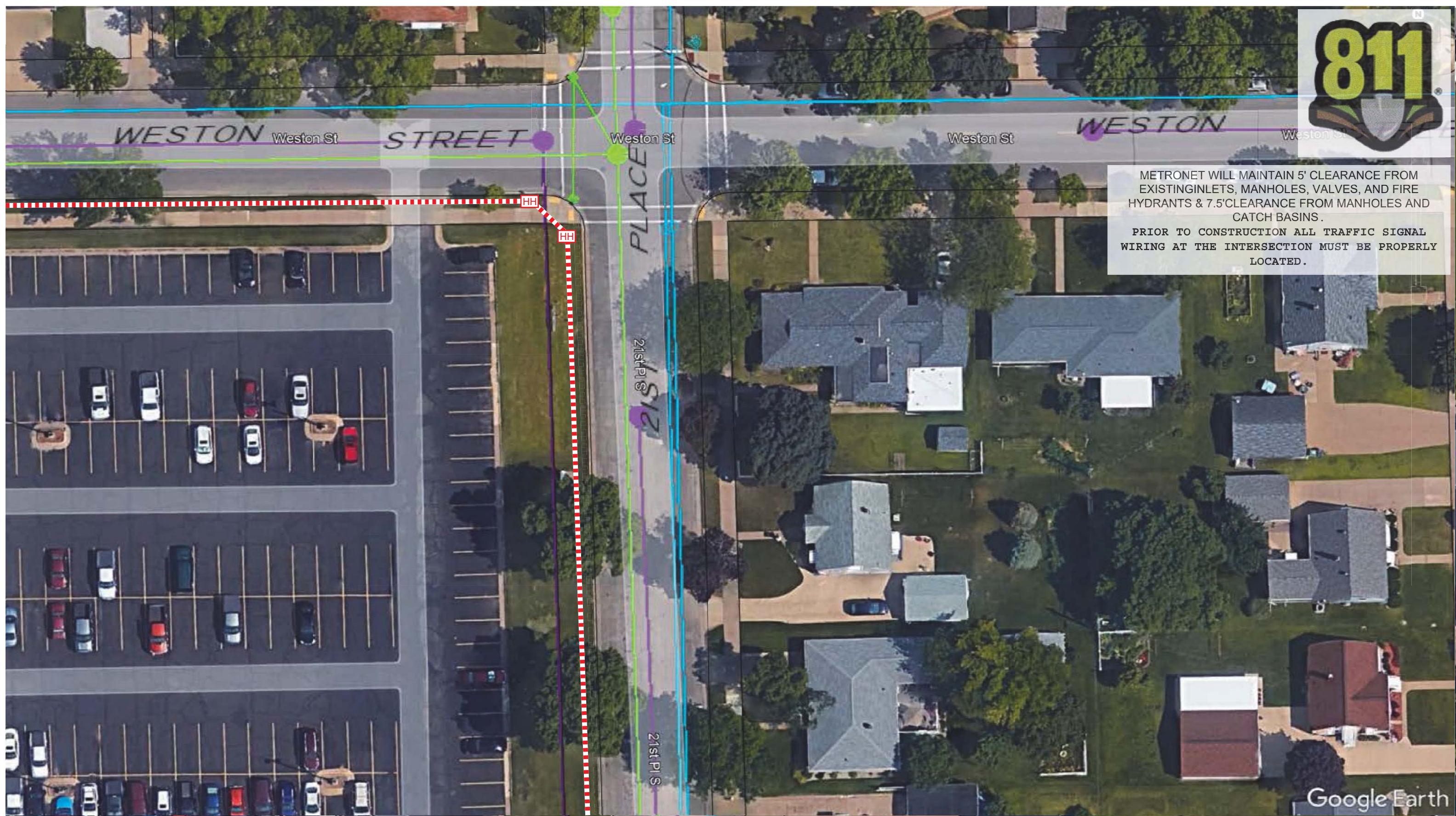
Revised
 Feb 26,
 2024

Drawing Title
 WILC-FR03
 Underground
 Route

Description
 West of 20th St to East of 21st St.
 South of Weston St.



Page
 5



METRONET WILL MAINTAIN 5' CLEARANCE FROM EXISTING INLETS, MANHOLES, VALVES, AND FIRE HYDRANTS & 7.5' CLEARANCE FROM MANHOLES AND CATCH BASINS.

PRIOR TO CONSTRUCTION ALL TRAFFIC SIGNAL WIRING AT THE INTERSECTION MUST BE PROPERLY LOCATED.

Google Earth

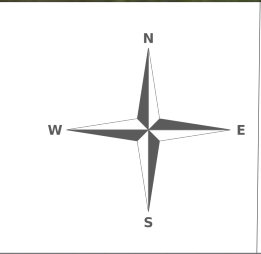


Drawn By
Frank Summers

Revised
Feb 26,
2024

Drawing Title
WILC-FR03
Underground
Route

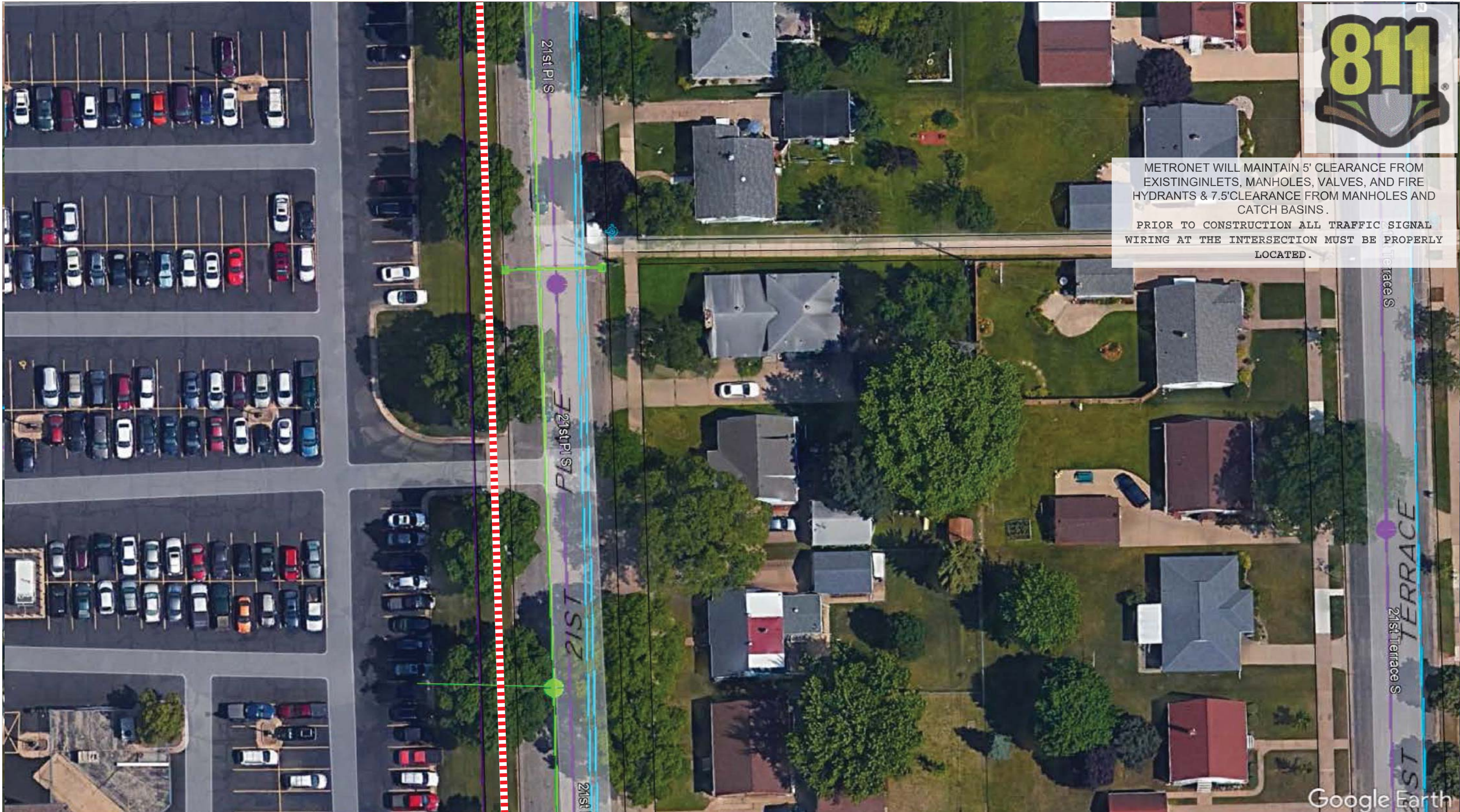
Description
East of 21st St to 21st Pl. S
Turning South of Weston St.
West of 21st Pl. S



Page
6



METRONET WILL MAINTAIN 5' CLEARANCE FROM EXISTING INLETS, MANHOLES, VALVES, AND FIRE HYDRANTS & 7.5' CLEARANCE FROM MANHOLES AND CATCH BASINS.
 PRIOR TO CONSTRUCTION ALL TRAFFIC SIGNAL WIRING AT THE INTERSECTION MUST BE PROPERLY LOCATED.

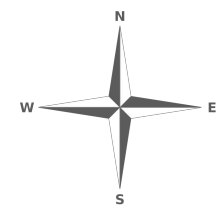


Drawn By
Frank Summers

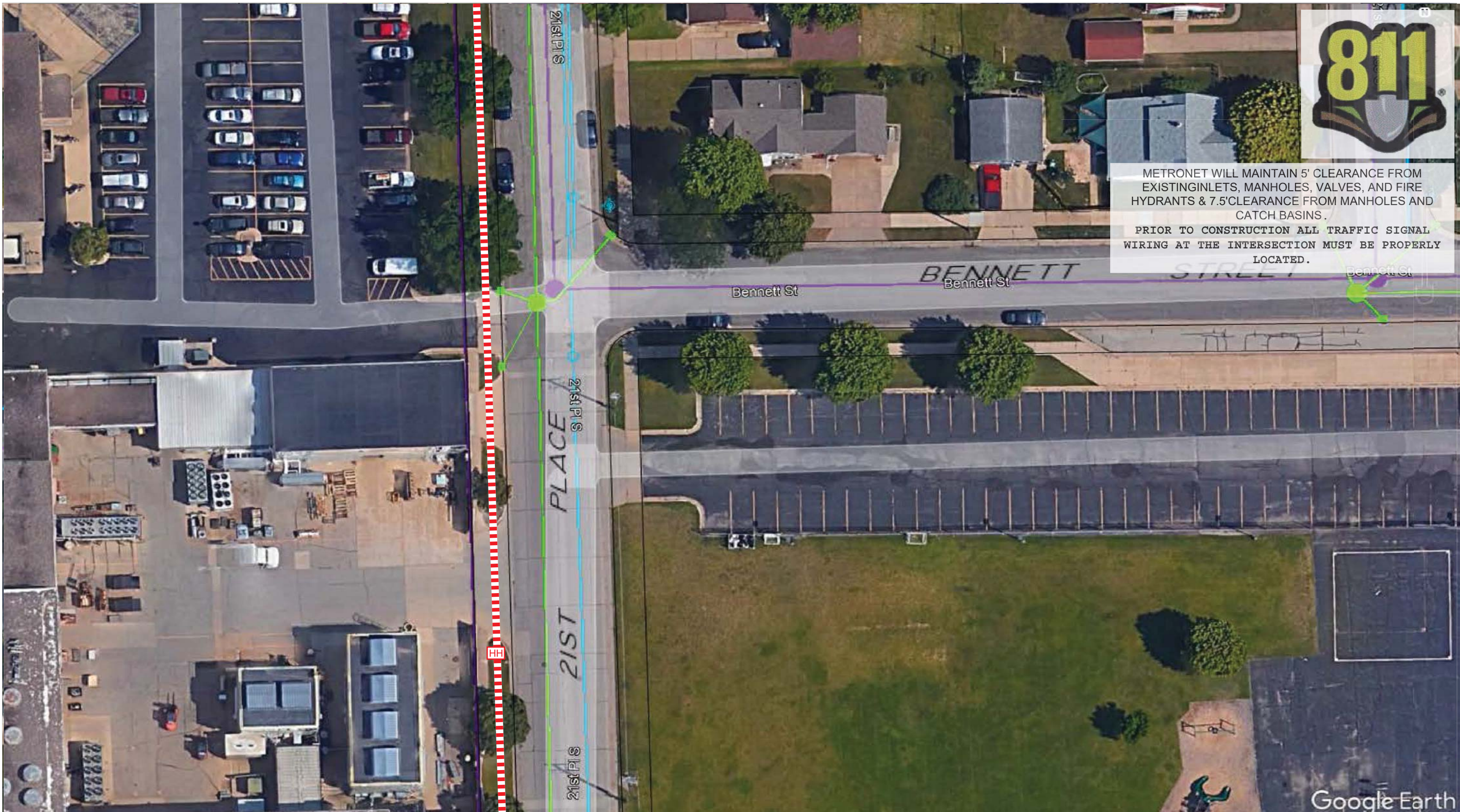
Revised
Feb 26,
2024

Drawing Title
WILC-FR03
Underground
Route

Description
Continuing South of Weston St.
West of 21st Pl. S



Page
7



METRONET WILL MAINTAIN 5' CLEARANCE FROM EXISTING INLETS, MANHOLES, VALVES, AND FIRE HYDRANTS & 7.5' CLEARANCE FROM MANHOLES AND CATCH BASINS.
 PRIOR TO CONSTRUCTION ALL TRAFFIC SIGNAL WIRING AT THE INTERSECTION MUST BE PROPERLY LOCATED.

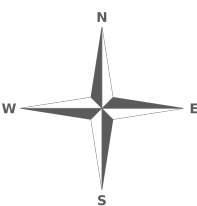


Drawn By
Frank Summers

Revised
 Feb 26,
 2024

Drawing Title
 WILC-FR03
 Underground
 Route

Description
 North of Bennett St. to South of Bennett St.
 West of 21st Pl. S



Page
 8



METRONET WILL MAINTAIN 5' CLEARANCE FROM EXISTING INLETS, MANHOLES, VALVES, AND FIRE HYDRANTS & 7.5' CLEARANCE FROM MANHOLES AND CATCH BASINS.

PRIOR TO CONSTRUCTION ALL TRAFFIC SIGNAL WIRING AT THE INTERSECTION MUST BE PROPERLY LOCATED.

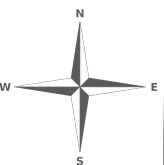


Drawn By
Frank Summers

Revised
Feb 26,
2024

Drawing Title
WILC-FR03
Underground
Route

Description
North of Townsend St. to South of Townsend St.
West of 21st Pl. S



Page
9



METRONET WILL MAINTAIN 5' CLEARANCE FROM EXISTING INLETS, MANHOLES, VALVES, AND FIRE HYDRANTS & 7.5' CLEARANCE FROM MANHOLES AND CATCH BASINS.

PRIOR TO CONSTRUCTION ALL TRAFFIC SIGNAL WIRING AT THE INTERSECTION MUST BE PROPERLY LOCATED.



Google Earth

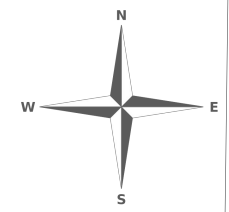


Drawn By
Frank Summers

Revised
Feb 26,
2024

Drawing Title
WILC-FR03
Underground
Route

Description
South of Bennett St.
West of 21st Pl. S

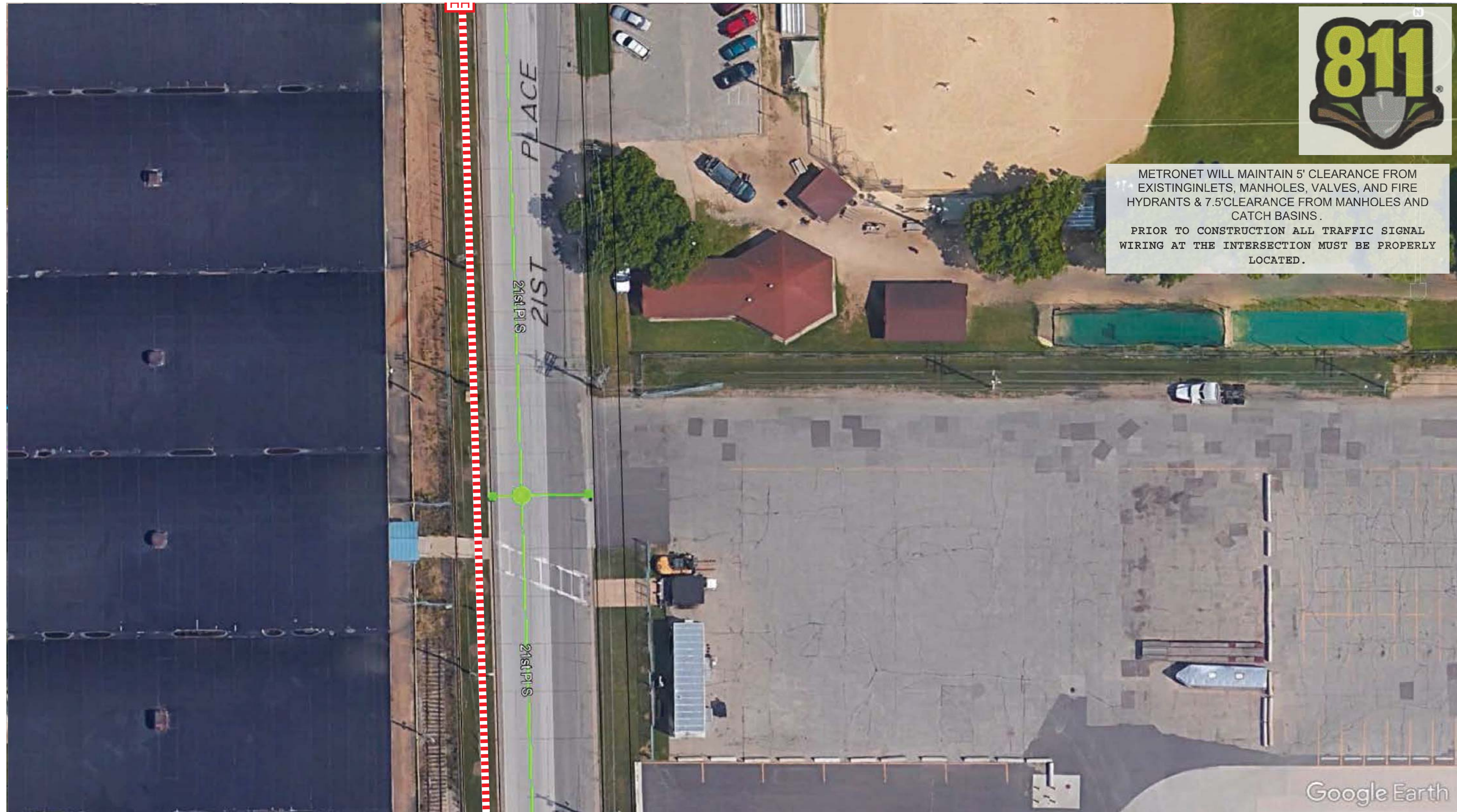


Page
10



METRONET WILL MAINTAIN 5' CLEARANCE FROM EXISTING INLETS, MANHOLES, VALVES, AND FIRE HYDRANTS & 7.5' CLEARANCE FROM MANHOLES AND CATCH BASINS.

PRIOR TO CONSTRUCTION ALL TRAFFIC SIGNAL WIRING AT THE INTERSECTION MUST BE PROPERLY LOCATED.



Google Earth

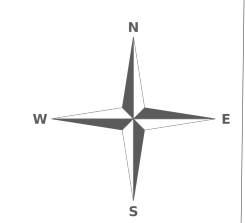


Drawn By
Frank Summers

Revised
Feb 26,
2024

Drawing Title
WILC-FR03
Underground
Route

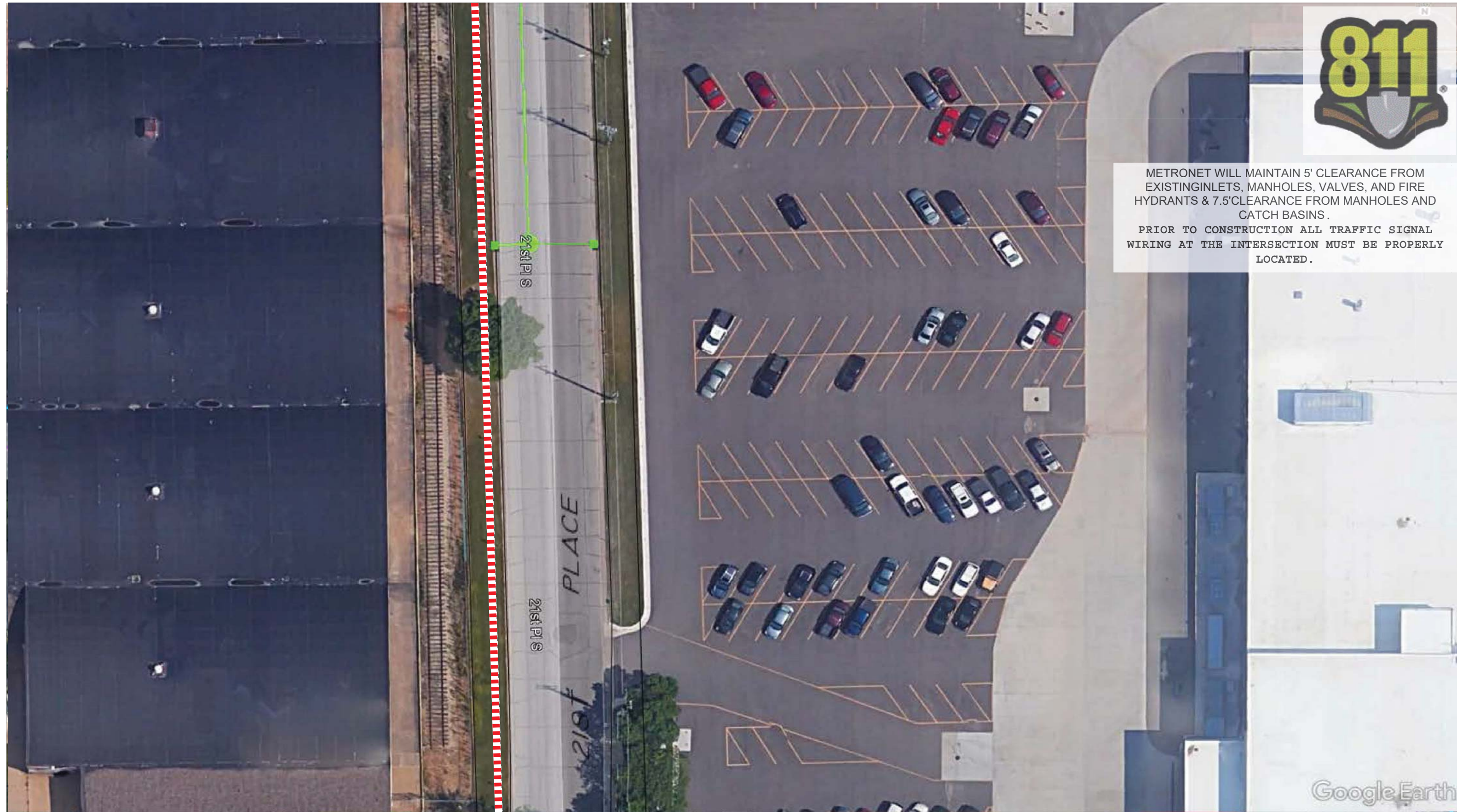
Description
North to South
West of 21st Pl. S



Page
11



METRONET WILL MAINTAIN 5' CLEARANCE FROM EXISTING INLETS, MANHOLES, VALVES, AND FIRE HYDRANTS & 7.5' CLEARANCE FROM MANHOLES AND CATCH BASINS.
 PRIOR TO CONSTRUCTION ALL TRAFFIC SIGNAL WIRING AT THE INTERSECTION MUST BE PROPERLY LOCATED.

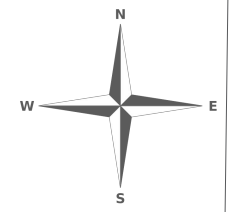


Drawn By
Frank Summers

Revised
 Feb 26,
 2024

Drawing Title
 WILC-FR03
 Underground
 Route

Description
 North to South
 West of 21st Pl. S

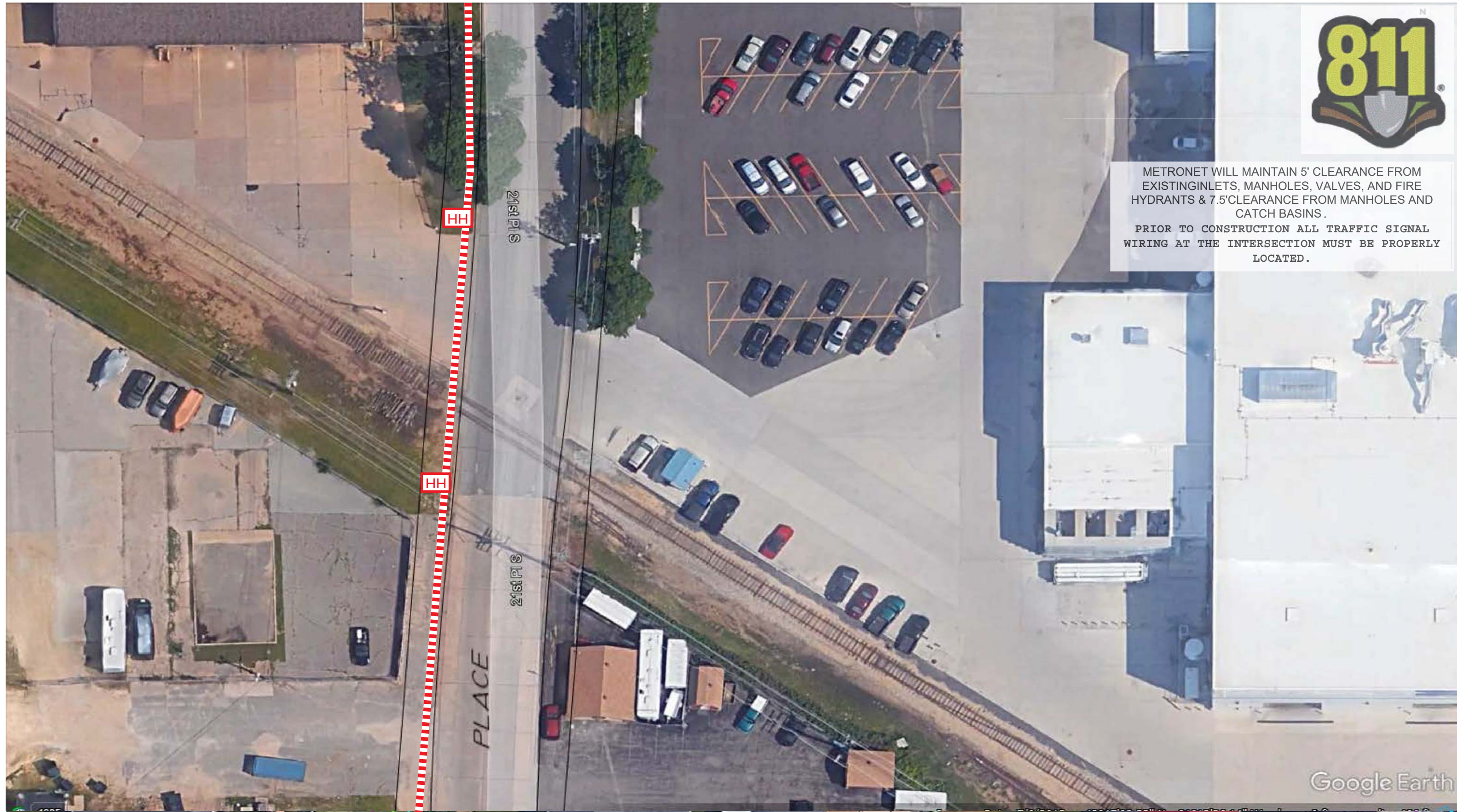


Page
 12



METRONET WILL MAINTAIN 5' CLEARANCE FROM EXISTING INLETS, MANHOLES, VALVES, AND FIRE HYDRANTS & 7.5' CLEARANCE FROM MANHOLES AND CATCH BASINS.

PRIOR TO CONSTRUCTION ALL TRAFFIC SIGNAL WIRING AT THE INTERSECTION MUST BE PROPERLY LOCATED.



Google Earth

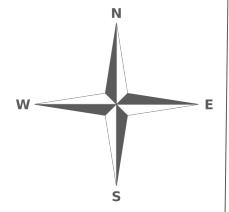


Drawn By
Frank Summers

Revised
Feb 26,
2024

Drawing Title
WILC-FR03
Underground
Route

Description
North to South
West of 21st Pl. S

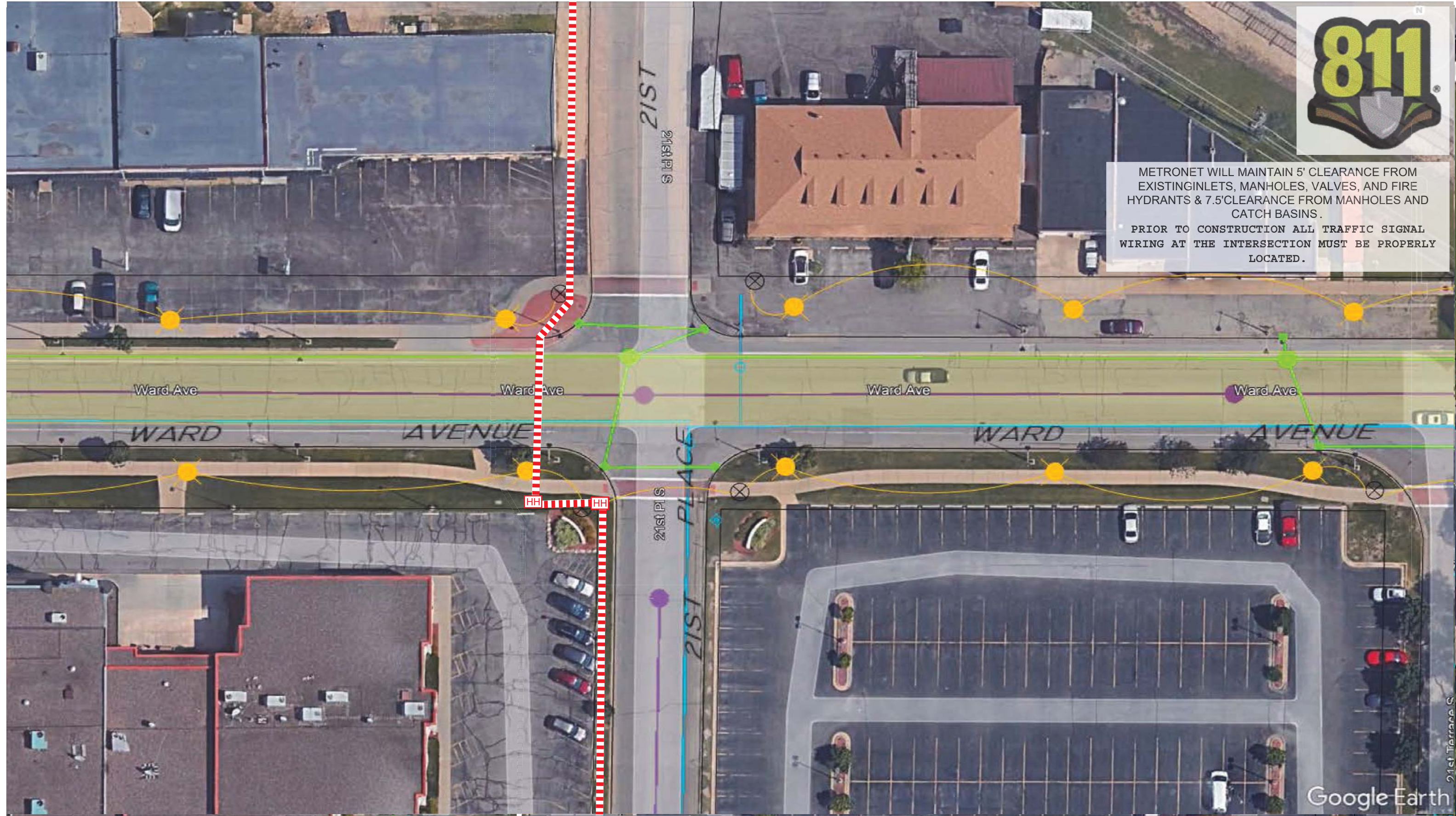


Page
13



METRONET WILL MAINTAIN 5' CLEARANCE FROM EXISTING INLETS, MANHOLES, VALVES, AND FIRE HYDRANTS & 7.5' CLEARANCE FROM MANHOLES AND CATCH BASINS.

PRIOR TO CONSTRUCTION ALL TRAFFIC SIGNAL WIRING AT THE INTERSECTION MUST BE PROPERLY LOCATED.

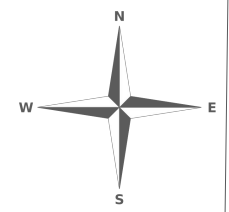


Drawn By
Frank Summers

Revised
Feb 26,
2024

Drawing Title
WILC-FR03
Underground
Route

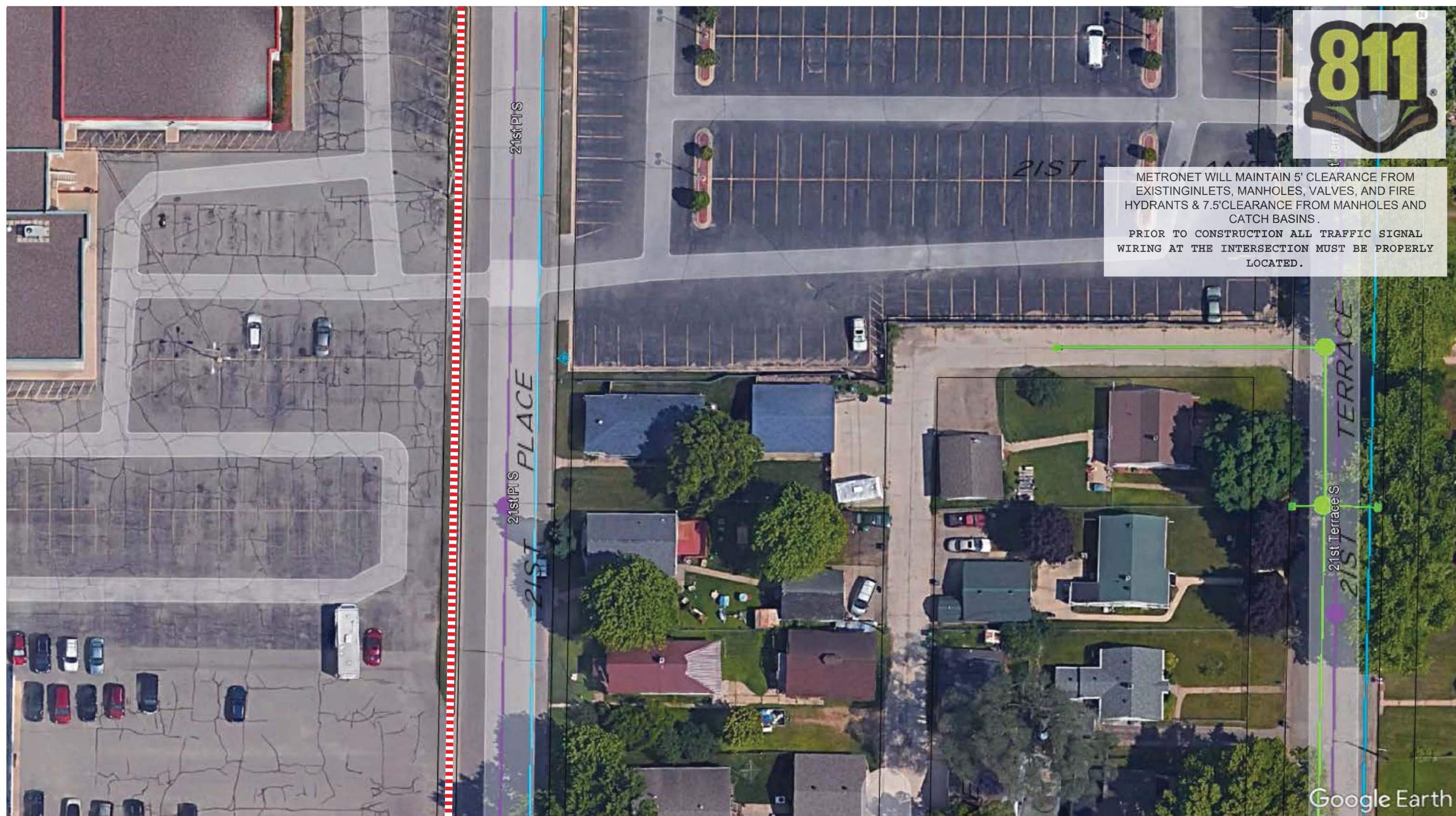
Description
North of Ward Ave. to South of Ward Ave.
West of 21st Pl. S



Page
14



METRONET WILL MAINTAIN 5' CLEARANCE FROM EXISTING INLETS, MANHOLES, VALVES, AND FIRE HYDRANTS & 7.5' CLEARANCE FROM MANHOLES AND CATCH BASINS.
 PRIOR TO CONSTRUCTION ALL TRAFFIC SIGNAL WIRING AT THE INTERSECTION MUST BE PROPERLY LOCATED.

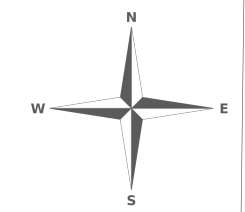


Drawn By
Frank Summers

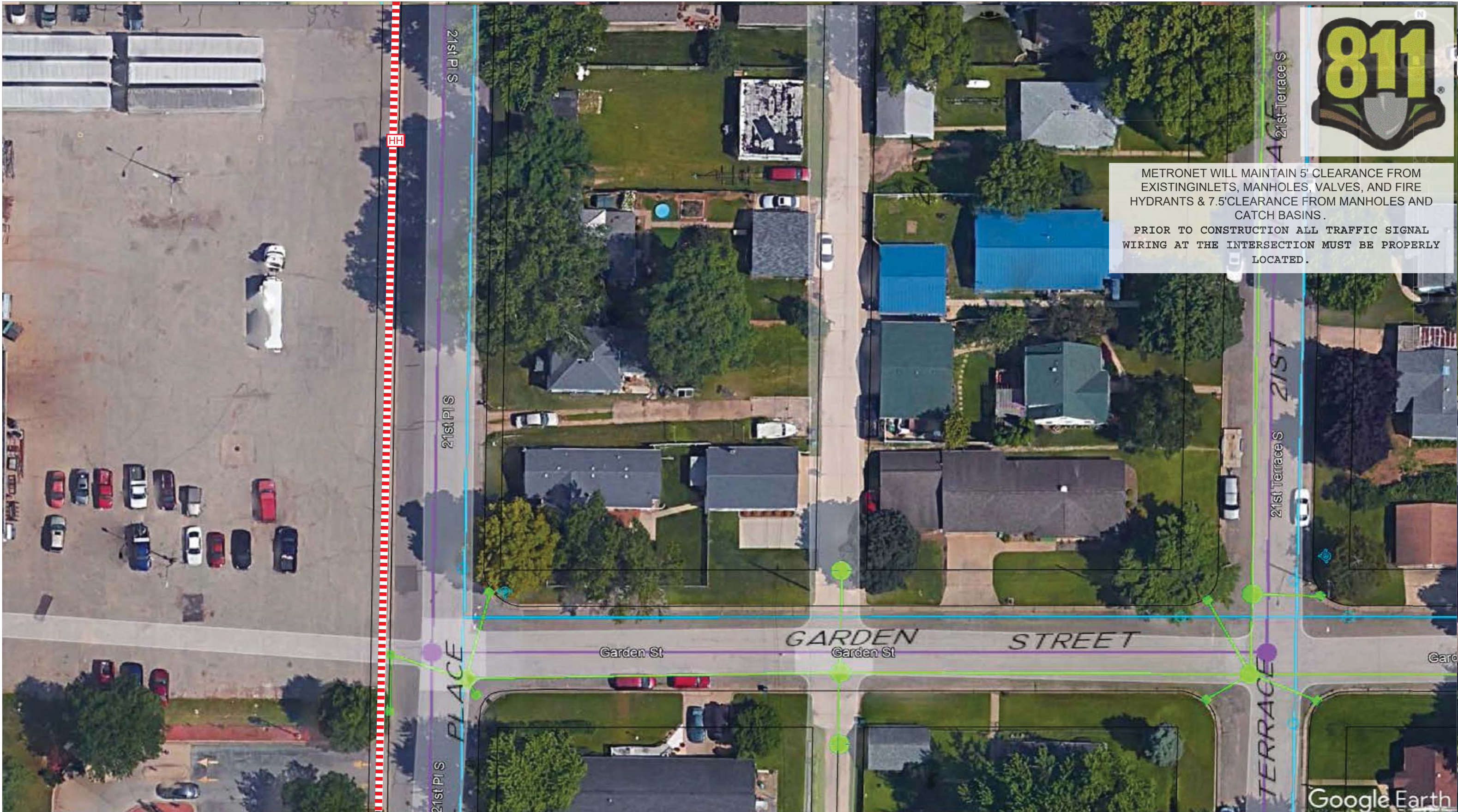
Revised
Feb 26,
2024

Drawing Title
WILC-FR03
Underground
Route

Description
North to South
West of 21st Pl. S



Page
15



METRONET WILL MAINTAIN 5' CLEARANCE FROM EXISTING INLETS, MANHOLES, VALVES, AND FIRE HYDRANTS & 7.5' CLEARANCE FROM MANHOLES AND CATCH BASINS.
 PRIOR TO CONSTRUCTION ALL TRAFFIC SIGNAL WIRING AT THE INTERSECTION MUST BE PROPERLY LOCATED.

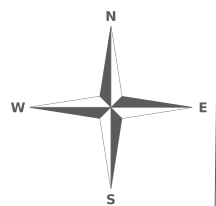


Drawn By
Frank Summers

Revised
 Feb 26,
 2024

Drawing Title
 WILC-FR03
 Underground
 Route

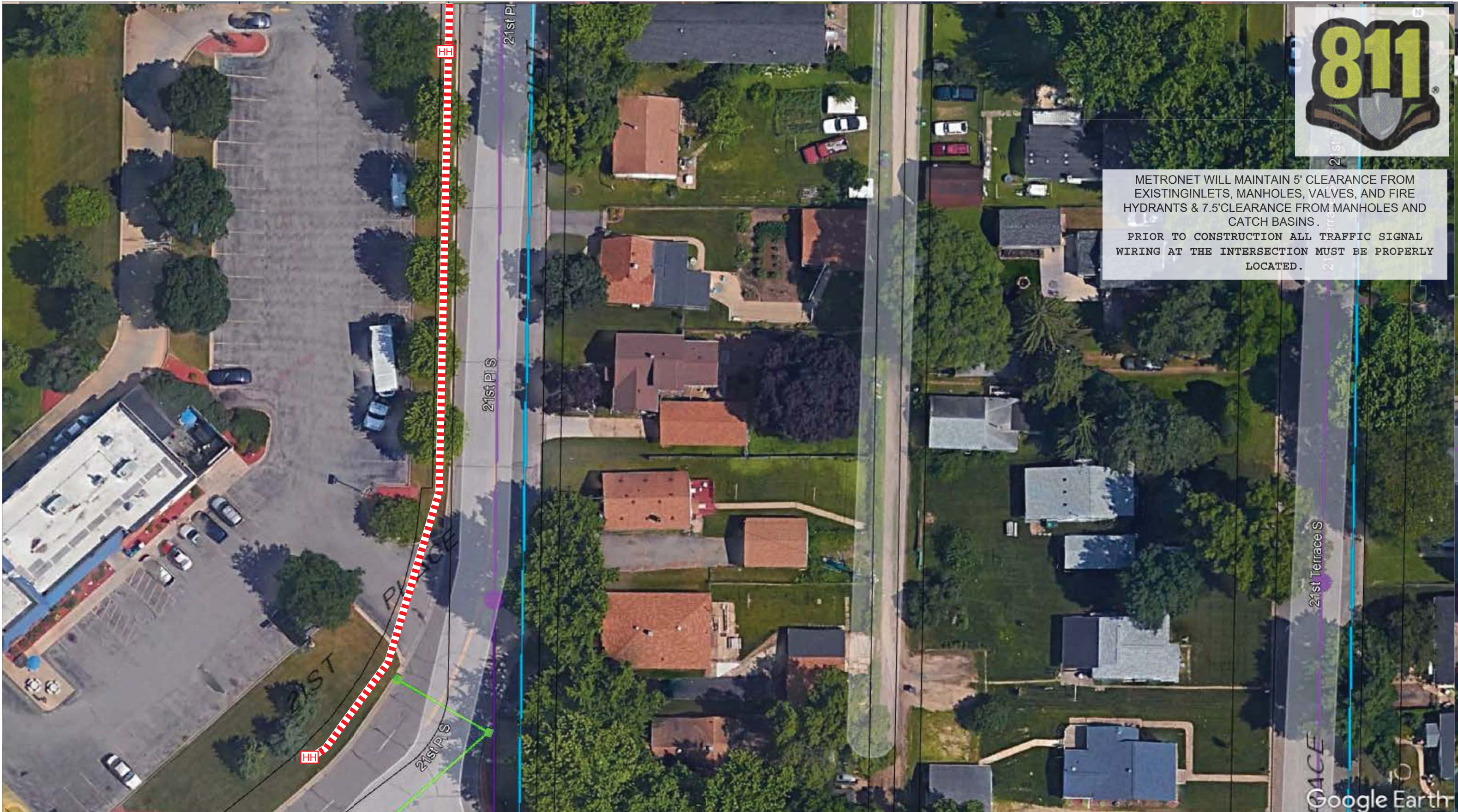
Description
 North of Garden St. to South of Garden St.
 West of 21st Pl. S



Page
 16



METRONET WILL MAINTAIN 5' CLEARANCE FROM EXISTING INLETS, MANHOLES, VALVES, AND FIRE HYDRANTS & 7.5' CLEARANCE FROM MANHOLES AND CATCH BASINS.
 PRIOR TO CONSTRUCTION ALL TRAFFIC SIGNAL WIRING AT THE INTERSECTION MUST BE PROPERLY LOCATED.

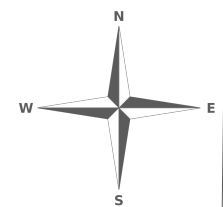


Drawn By
Frank Summers

Revised
Feb 26,
2024

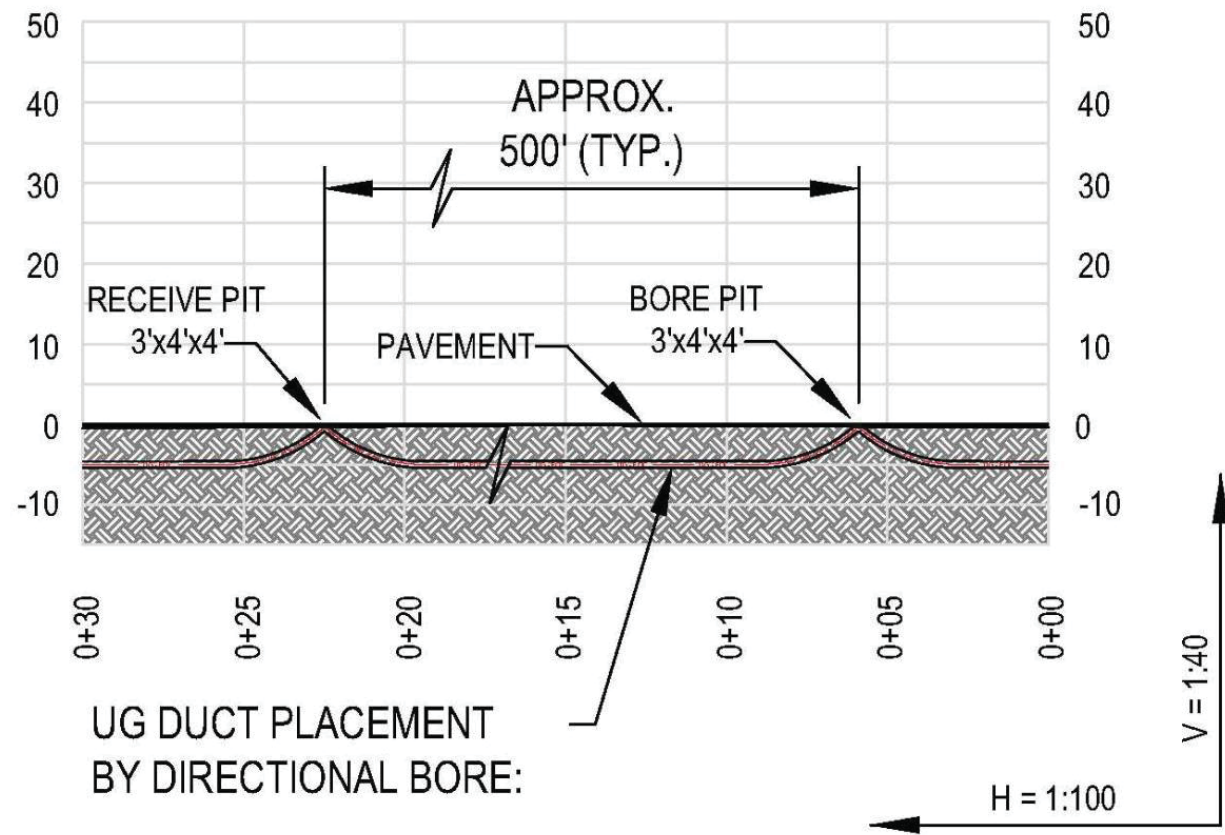
Drawing Title
WILC-FR03
Underground
Route

Description
North to South
West of 21st Pl. S

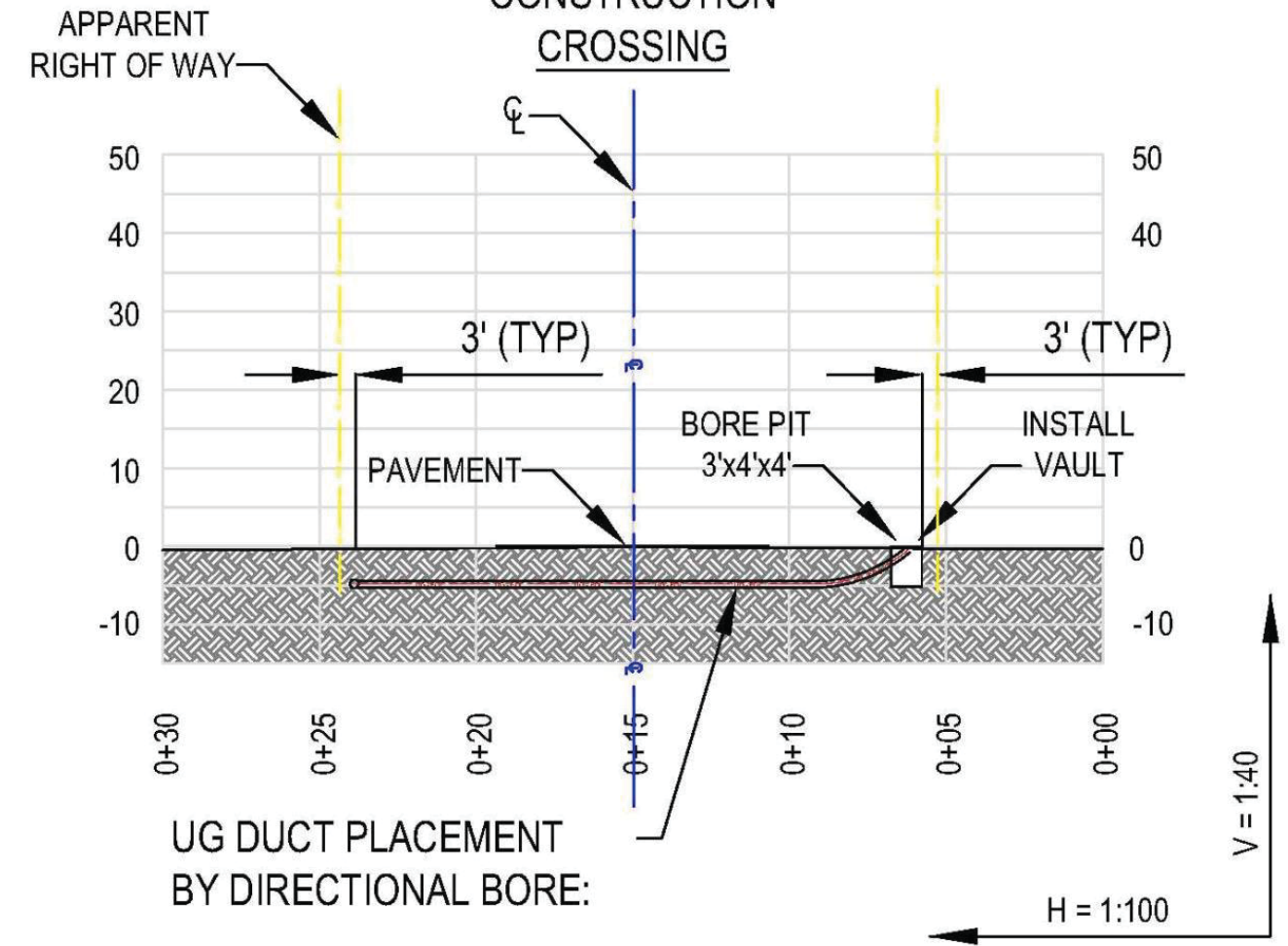


Page
17

TYPICAL BURIED CABLE
CONSTRUCTION
PARALLEL

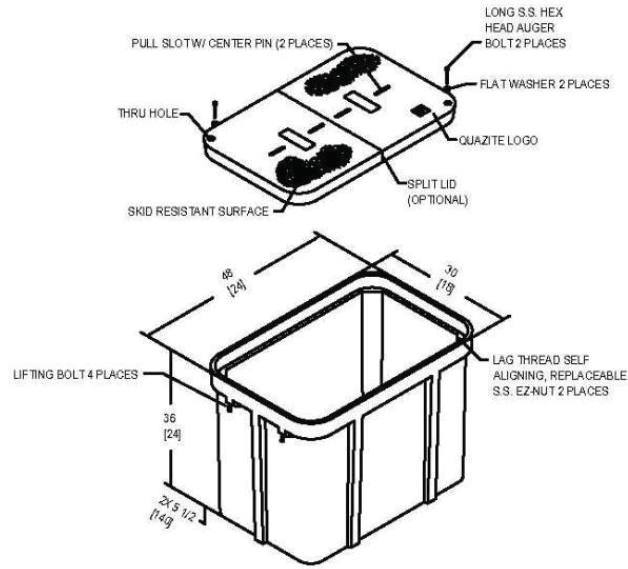


TYPICAL BURIED CABLE
CONSTRUCTION
CROSSING



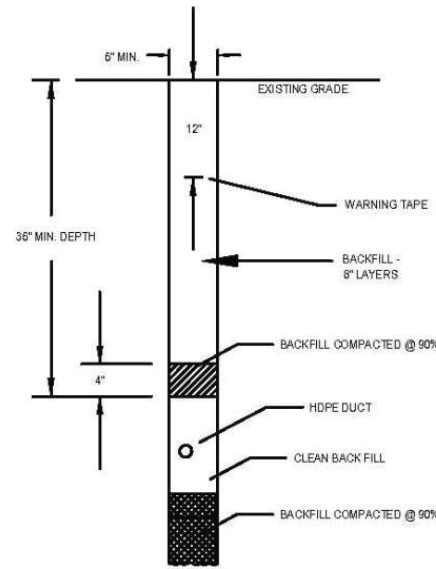
TYPICAL DETAIL

QUAZITE 30X48X36 ASSEMBLY OR
QUAZITE 24X18X24 ASSEMBLY



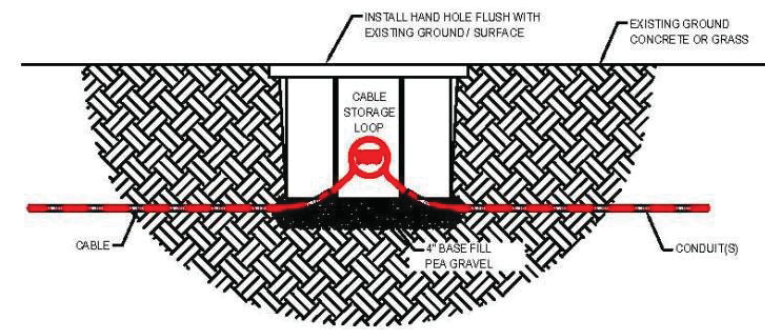
TYPICAL DETAIL

TRENCH IN SOIL (NON TRAFFIC AREAS)



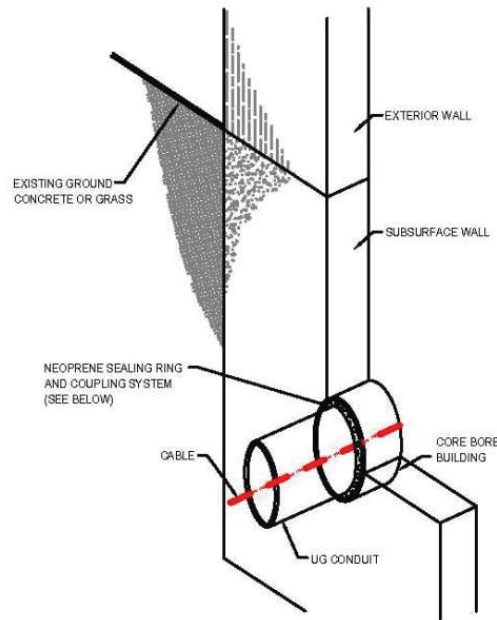
TYPICAL DETAIL

HAND HOLE INSTALLATION



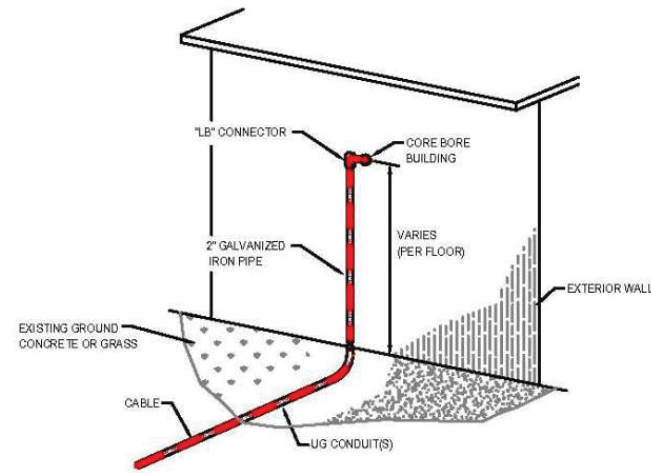
TYPICAL DETAIL

LINK SEAL INSTALLATION



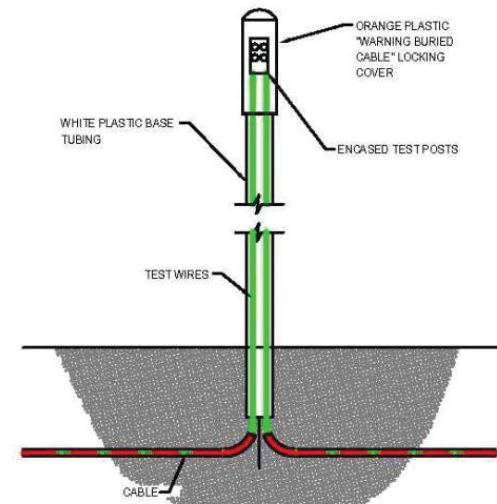
TYPICAL DETAIL

ISP / BUILDING INSTALLATION



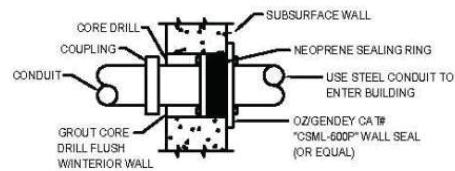
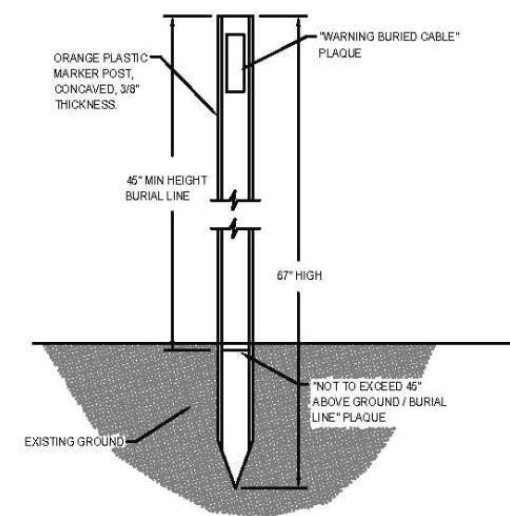
TYPICAL DETAIL

LOCATE TEST STATION



TYPICAL DETAIL

MARKER POST



TYPICAL DETAIL

CONDUIT SEAL

TYPICAL DETAIL #5

OPEN / ROAD CUT

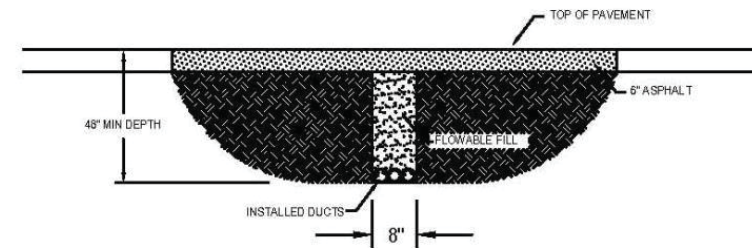




Figure 6E-3. Use of Hand-Signaling Devices by Traffic Regulators

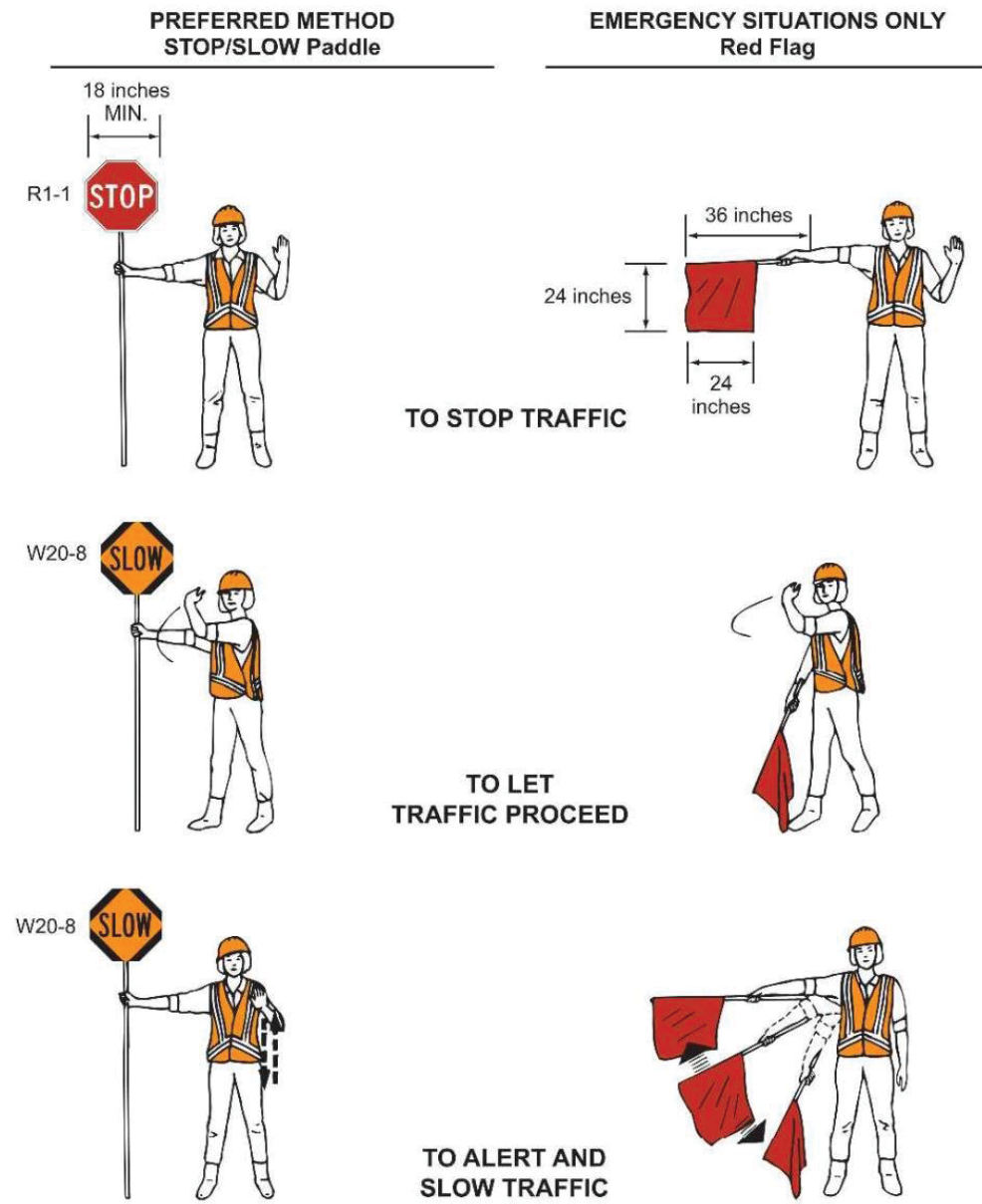
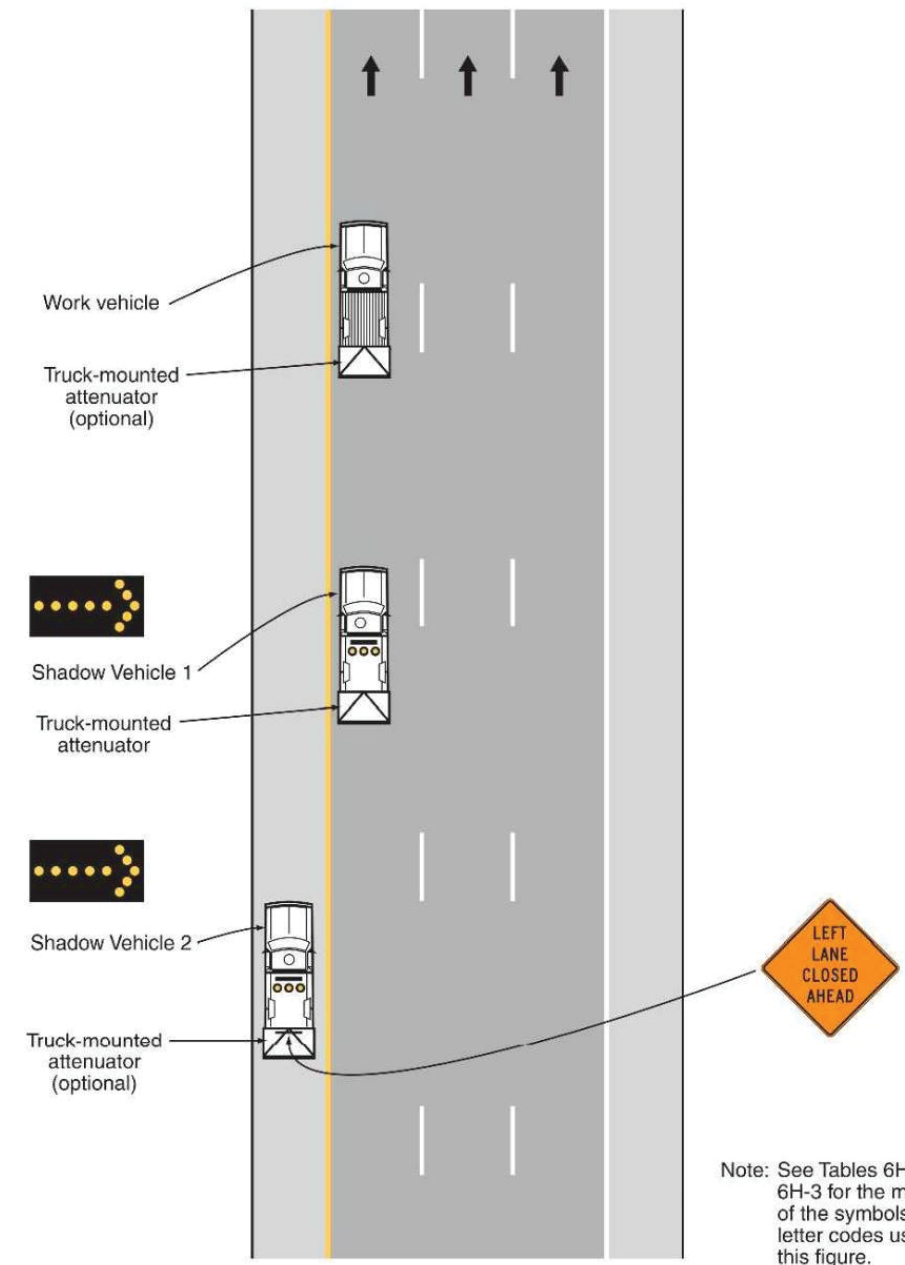


Figure 6H-35. Mobile Operation on a Multi-Lane Road (TA-35)



Typical Application 35

Note: See Tables 6H-2 and 6H-3 for the meaning of the symbols and/or letter codes used in this figure.

Revised
Feb. 26
2024

