

| PAVEMENT LEGEND |                                      |
|-----------------|--------------------------------------|
| SYMBOL          | DESCRIPTION                          |
|                 | BITUMINOUS PAVEMENT                  |
|                 | CONCRETE PAVEMENT                    |
|                 | HEAVY DUTY CONCRETE PAVEMENT         |
|                 | CONCRETE SIDEWALK                    |
|                 | REVERSE PITCH CONCRETE CURB & GUTTER |



DESIGN DEVELOPMENT

THIS DOCUMENT IS THE PROPERTY OF I & S GROUP, INC. AND MAY NOT BE USED, COPIED OR DUPLICATED WITHOUT PRIOR WRITTEN CONSENT.

PROJECT  
**LA CROSSE REGIONAL AIRPORT**  
**CAR RENTAL FACILITY**

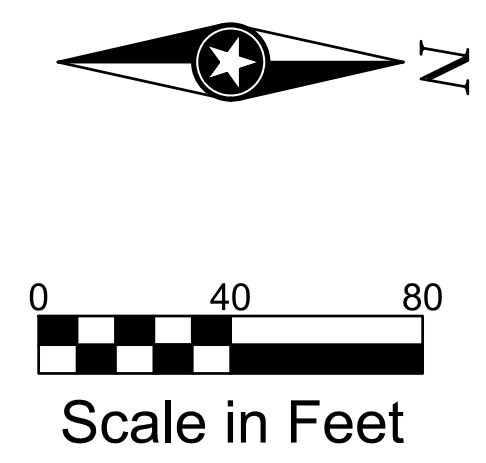
LA CROSSE WISCONSIN

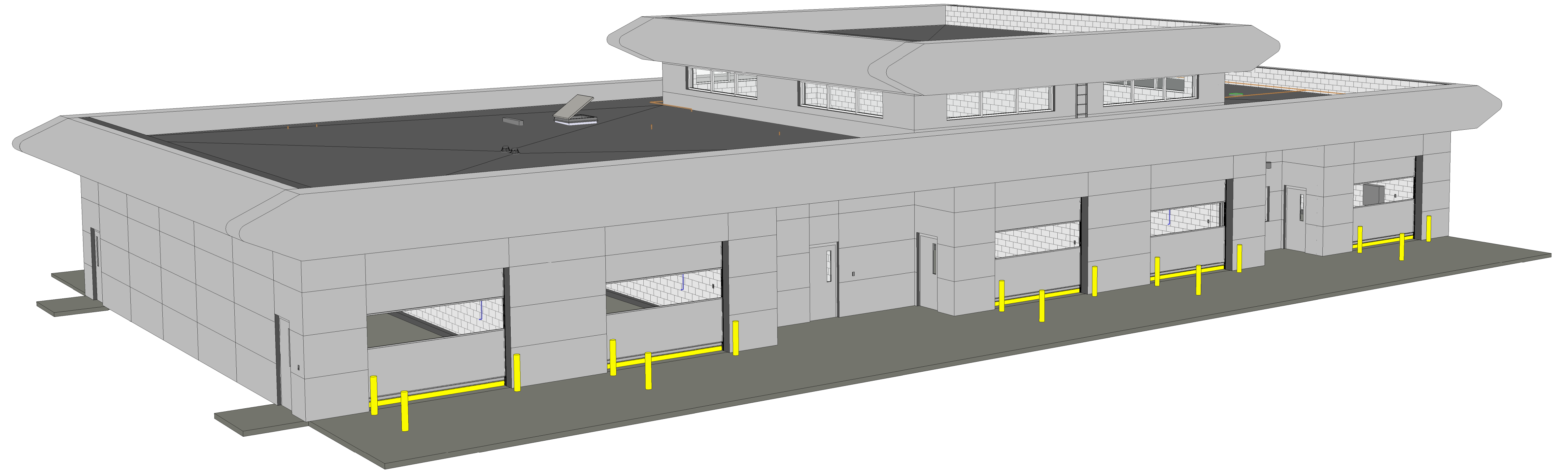
| REVISION SCHEDULE |             |    |
|-------------------|-------------|----|
| DATE              | DESCRIPTION | BY |
|                   |             |    |
|                   |             |    |
|                   |             |    |

|                     |               |
|---------------------|---------------|
| PROJECT NO.         | 16-19065      |
| FILE NAME           | 19065 C3 SITE |
| DRAWN BY            | ADB           |
| DESIGNED BY         | KBR           |
| REVIEWED BY         | WAK           |
| ORIGINAL ISSUE DATE | 03/31/2017    |
| CLIENT PROJECT NO.  | -             |

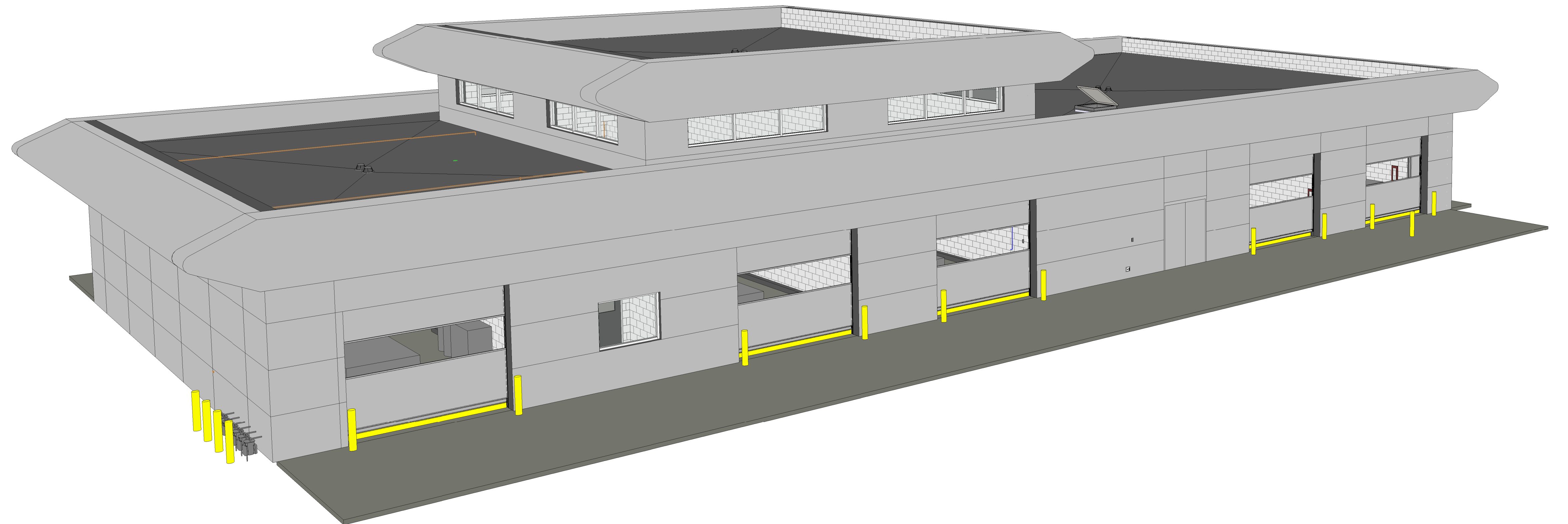
TITLE  
**SITE PLAN**

SHEET  
**C3-10**





① VIEW FROM SOUTH-EAST



② VIEW FROM NORTH-WEST

3D VIEWS



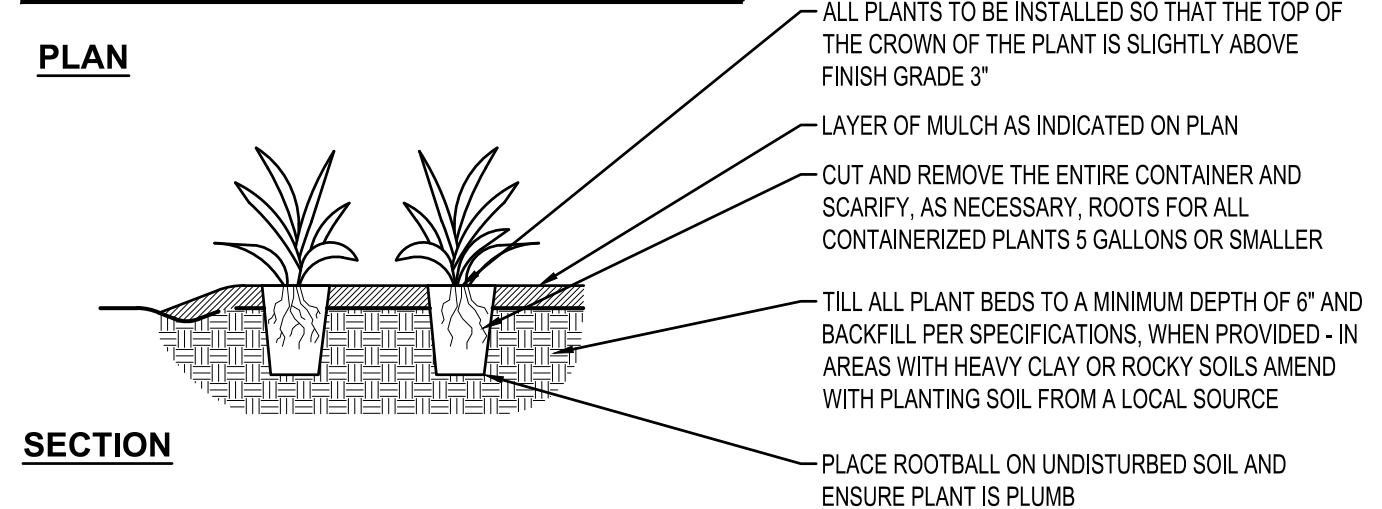
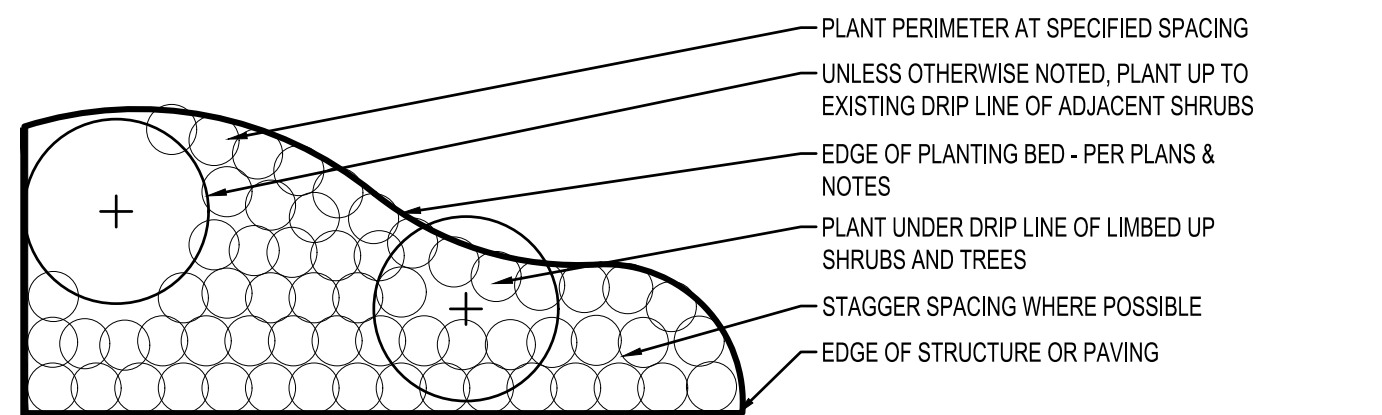




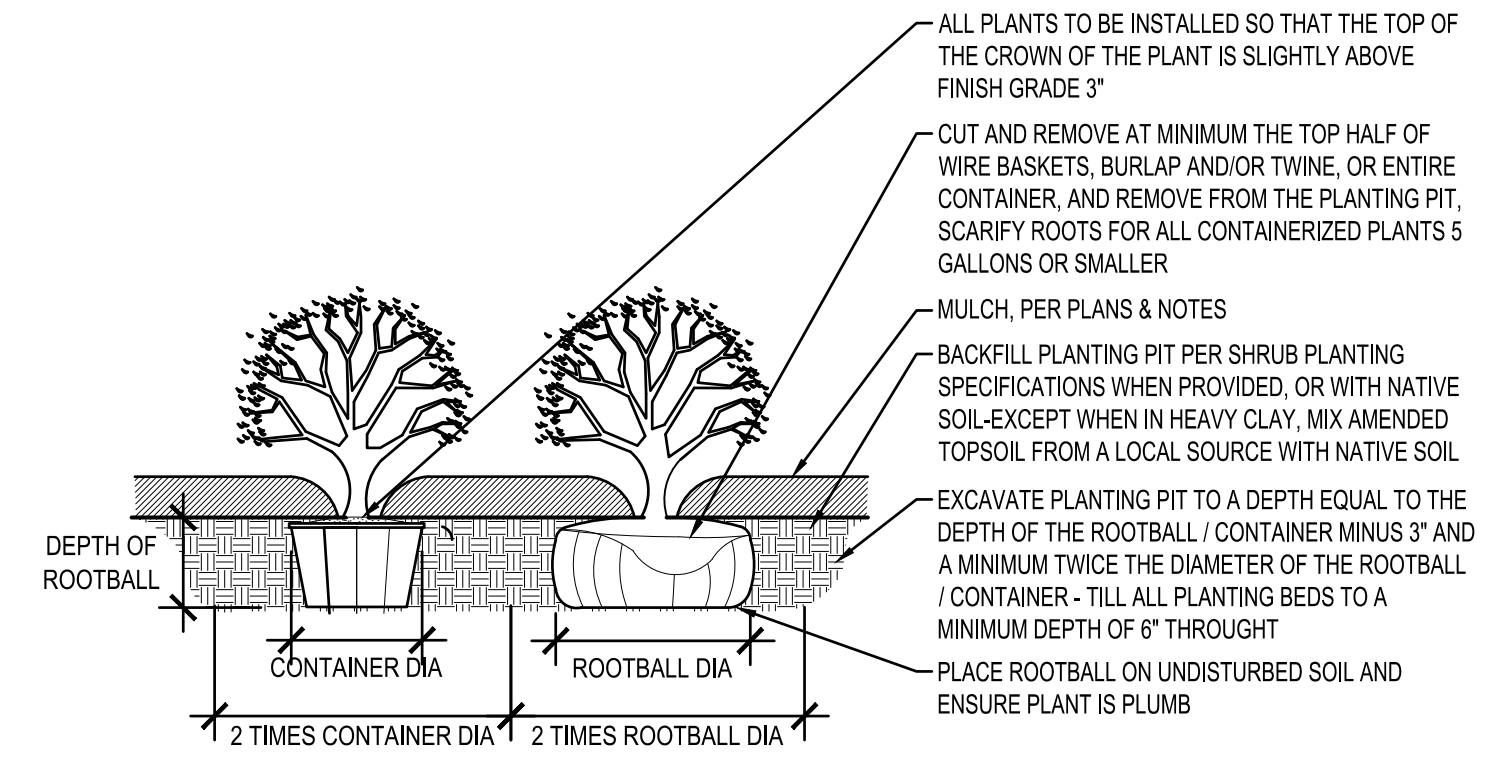
DESIGN DEVELOPMENT

**LEGEND**

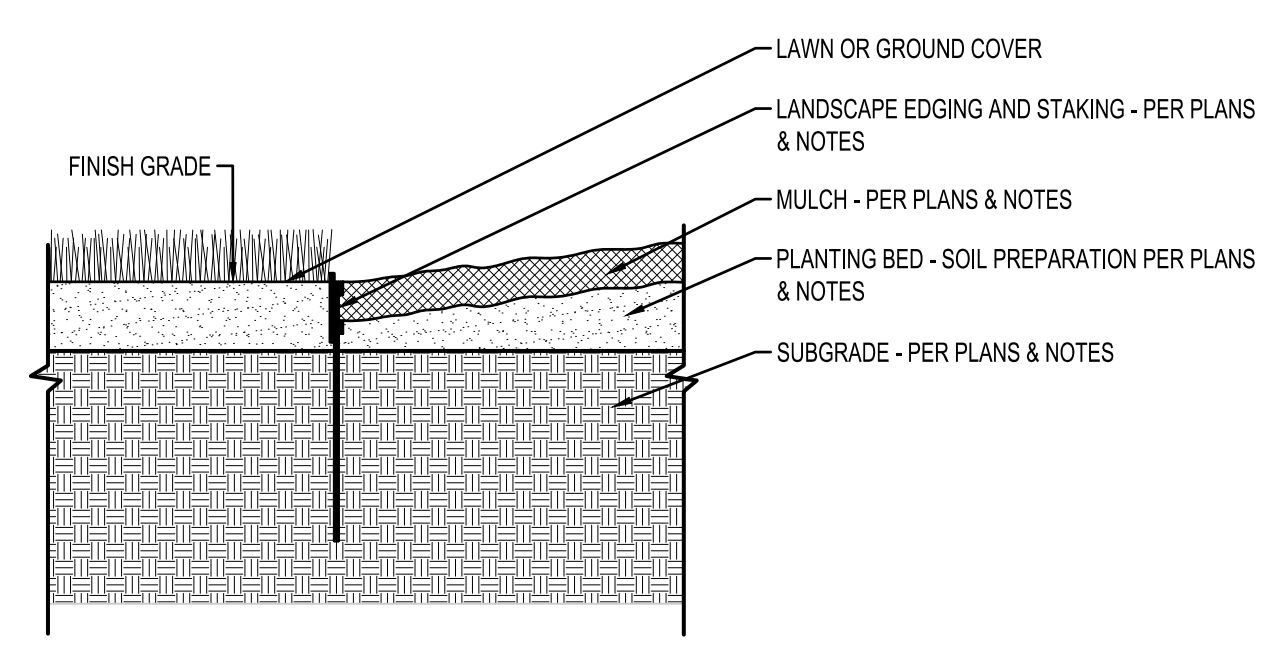
| EXISTING |                       |
|----------|-----------------------|
|          | PROPERTY LINE         |
|          | PROPERTY LINE (OTHER) |
|          | SETBACK               |
|          | CONTOUR (MAJOR)       |
|          | CONTOUR (MINOR)       |
| PROPOSED |                       |
|          | CONTOUR (MAJOR)       |
|          | CONTOUR (MINOR)       |
|          | EDGER                 |



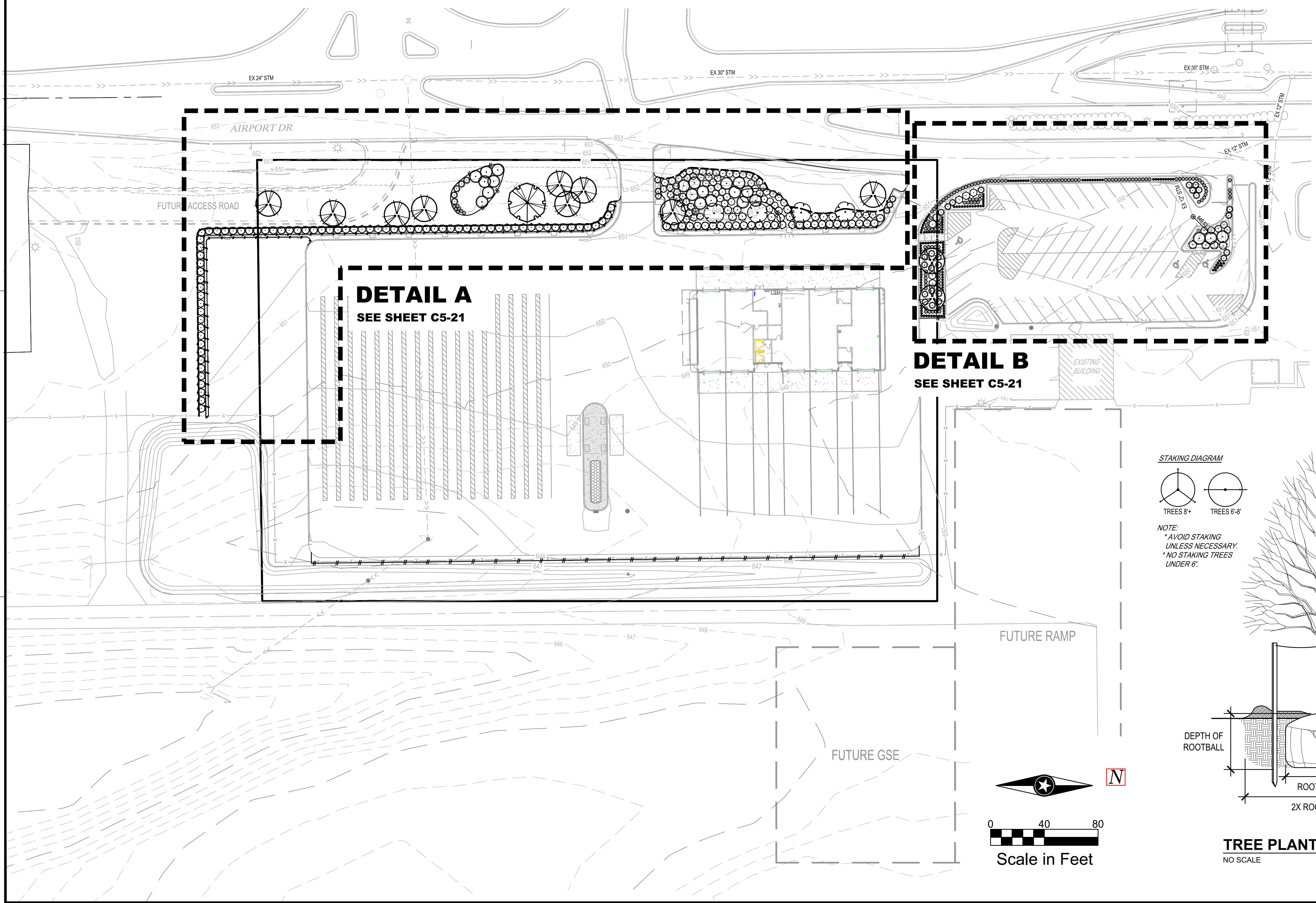
**PERENNIAL PLANTING DETAIL**  
NO SCALE



**SHRUB PLANTING DETAIL**  
NO SCALE

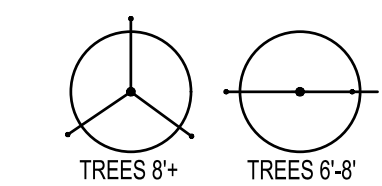


**LANDSCAPE EDGING DETAIL**  
NO SCALE

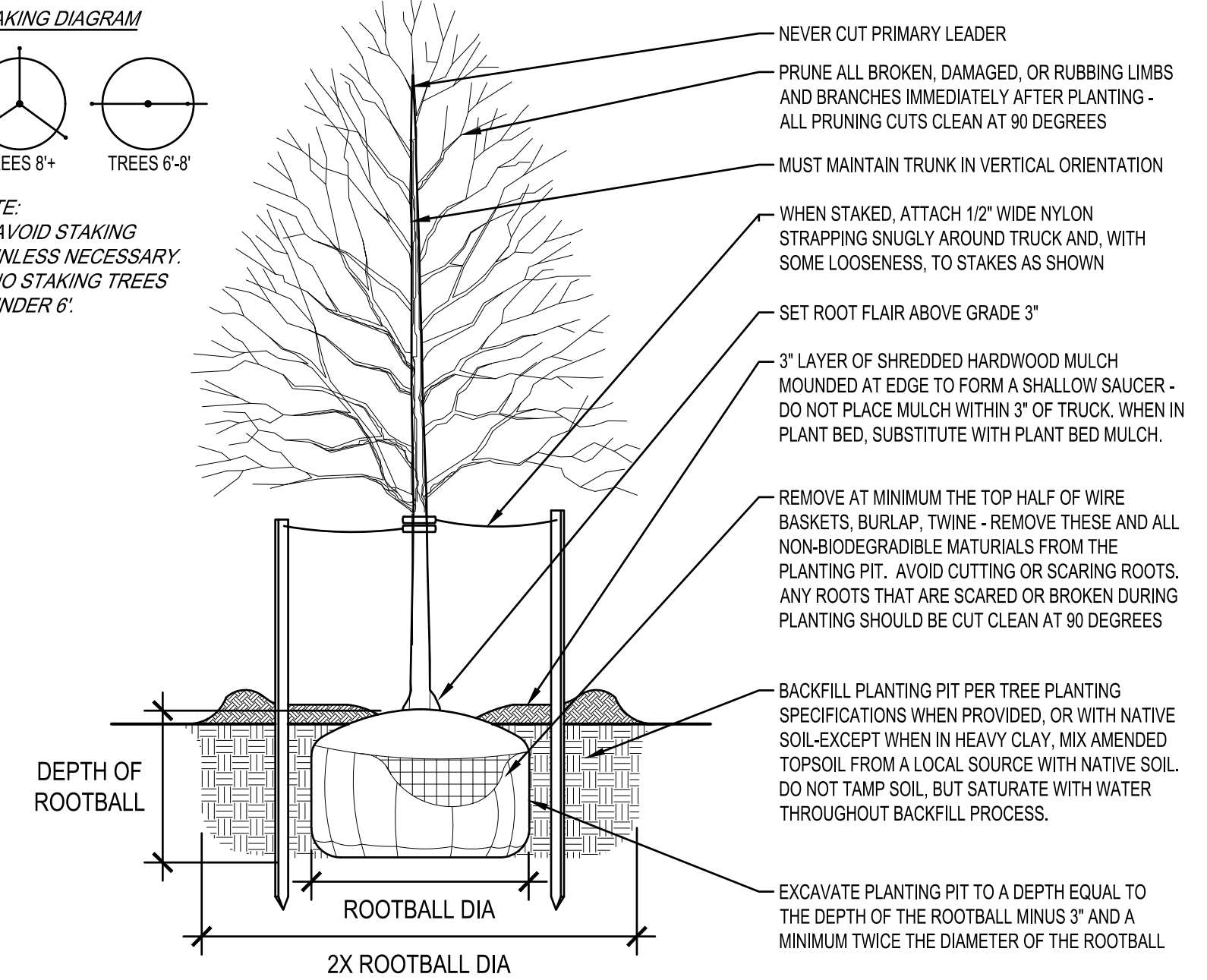


UTILITY LOCATIONS SHOWN ARE APPROXIMATE. CONTRACTOR IS RESPONSIBLE FOR LOCATING UTILITIES ON-SITE PRIOR TO CONSTRUCTION.

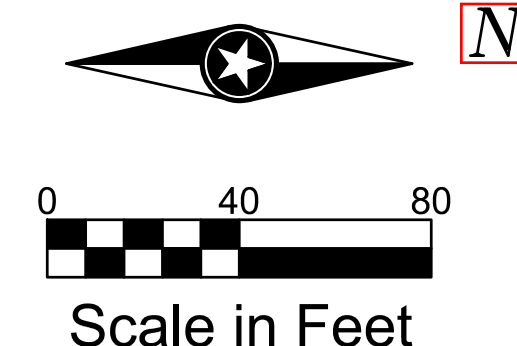
**STAKING DIAGRAM**



NOTE:  
\* AVOID STAKING UNLESS NECESSARY.  
\* NO STAKING TREES UNDER 6'.



**TREE PLANTING DETAIL**  
NO SCALE



THIS DOCUMENT IS THE PROPERTY OF I & S GROUP, INC. AND MAY NOT BE USED, COPIED OR DUPLICATED WITHOUT PRIOR WRITTEN CONSENT.

PROJECT

**LA CROSSE REGIONAL AIRPORT**

LA CROSSE WISCONSIN

| REVISION SCHEDULE |             |    |
|-------------------|-------------|----|
| DATE              | DESCRIPTION | BY |
|                   |             |    |
|                   |             |    |
|                   |             |    |

|                     |               |
|---------------------|---------------|
| PROJECT NO.         | 16-19065      |
| FILE NAME           | 19065 C5 LAND |
| DRAWN BY            | ADB           |
| DESIGNED BY         | KBR           |
| REVIEWED BY         | WAK           |
| ORIGINAL ISSUE DATE | 03/31/2017    |
| CLIENT PROJECT NO.  | -             |

TITLE

**OVERALL PLANTING PLAN**

SHEET

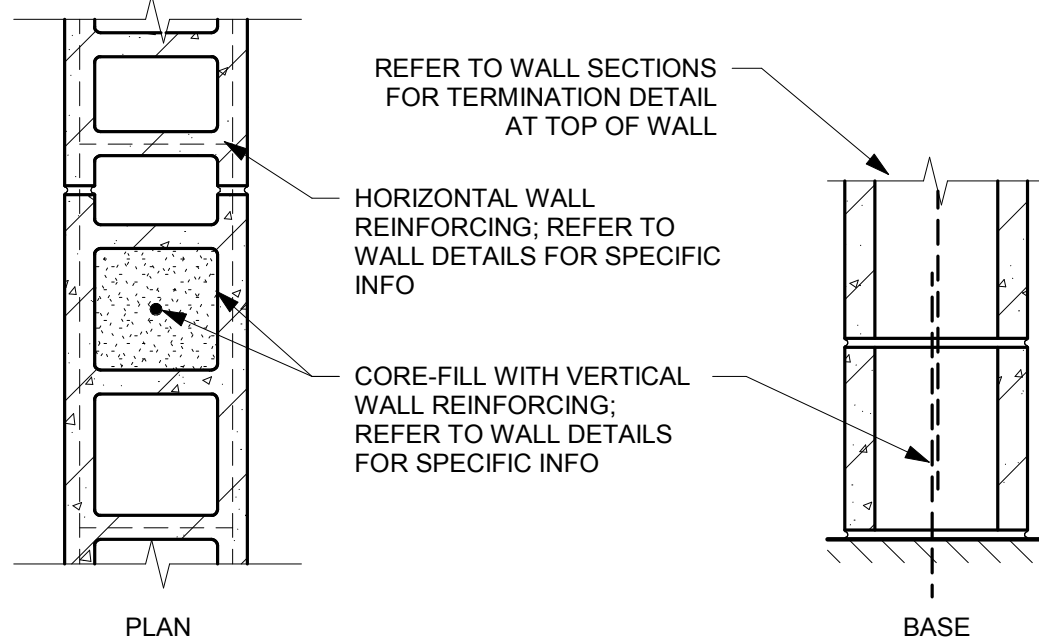
**C5-20**



**INTERIOR PARTITION KEY NOTES:**

NOT ALL KEY NOTES APPLY TO PROJECT. VERIFY WITH SPECIFIC WALL TYPE.

1. INCLUDE FIBERGLASS SOUND INSULATION.
2. PROVIDE FIRE-RATED SEALANT AT WALL BASE, TOP AND AROUND ALL PENETRATIONS.
3. REFER TO 2009 IBC TABLE 721.3.2 FOR CALCULATED FIRE-RESISTANCE RATING.
4. SPECIAL 8" BLOCK WITH 1.75" MIN. FACE SHELL THICKNESS.
5. REFER TO MANUFACTURER'S SPECIFICATIONS FOR STANDARD CONNECTION DETAILS, SPECIFIC R-VALUE AND ADDITIONAL INFORMATION.
6. REFER TO SPECIFICATIONS FOR SPECIFIC WALL PANEL FACE FINISH AND PROFILE.
7. INCLUDE ACOUSTIC SEALANT AT WALL BASE AND TOP TERMINATION, BOTH SIDES OF WALL.



| WALL TYPE | BLOCK SIZE (NOMINAL WIDTH AND HEIGHT) | CALCULATED FIRE RATING | REINFORCING                             | COMMENTS |
|-----------|---------------------------------------|------------------------|---|----------|
| M4        | 4x8                                   |                        |   |          |
| M6        | 6x8                                   |                        |   |          |
| M8        | 8x8                                   |                        | REFER TO WALL DETAILS FOR SPECIFIC INFO |          |

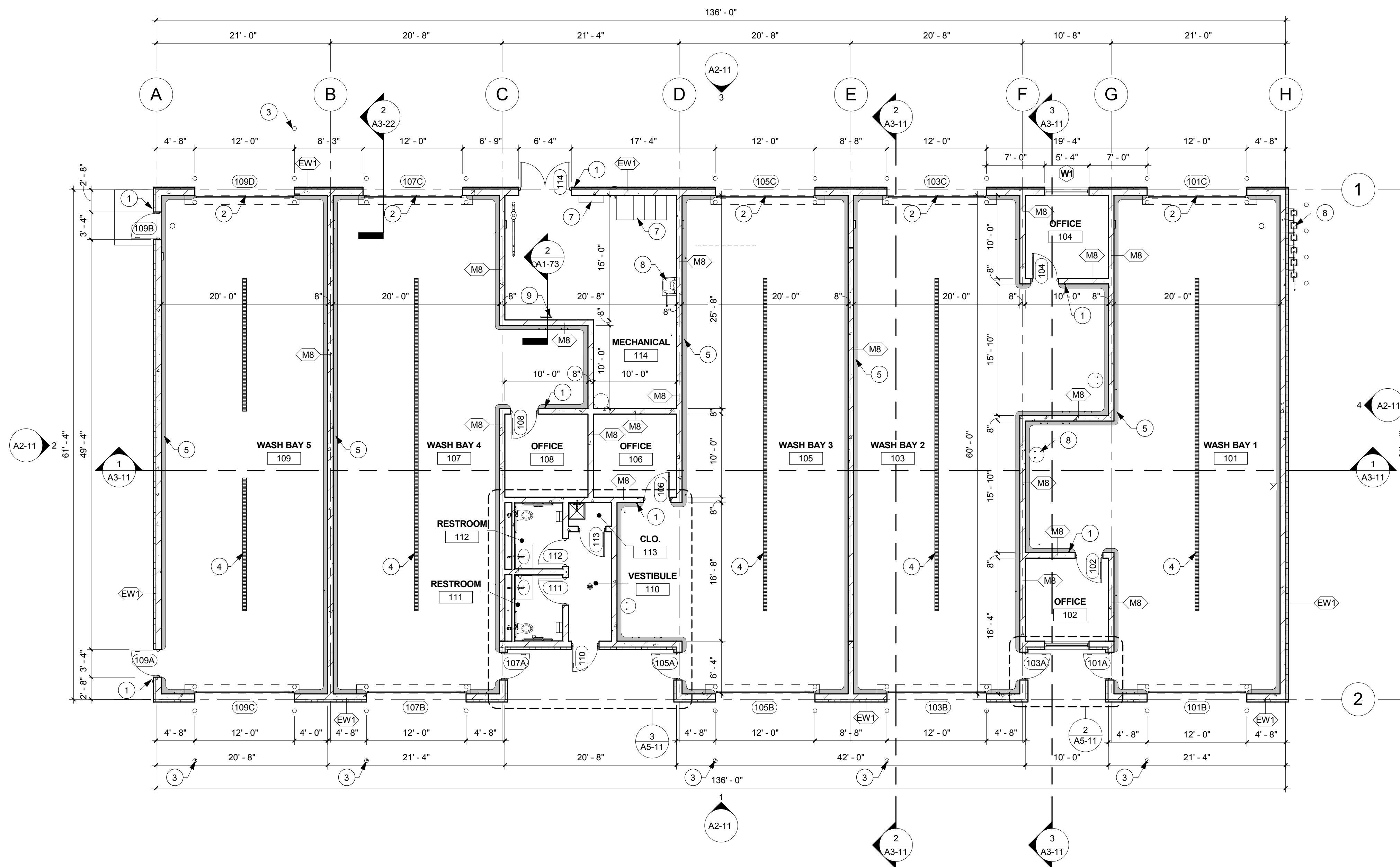
**2 WALL TYPE M (INTERIOR NON-RATED MASONRY)**  
1 1/2" = 1'-0"

**SHEET NOTES**

- ALL INTERIOR PARTITION WALLS SHALL BE WALL TYPE M8, UNLESS OTHERWISE NOTED.
- PITCH ALL CONCRETE STOOPS 1/4" PER FOOT AWAY FROM BUILDING.
- DIMENSIONS ARE FROM FACE OF MASONRY/CONCRETE AND FACE OF GYPSUM BD. TO FACE OF GYPSUM BD. FOR STUD WALL, UNLESS NOTED OTHERWISE.
- REFER TO G-21 FOR RATED WALL LOCATIONS.
- HOUSEKEEPING AND EQUIPMENT PADS BY GENERAL CONTRACTOR. REFER TO FIRE PROTECTION, PLUMBING, HVAC & ELECTRICAL DOCUMENTS FOR LOCATIONS.
- REFER TO STRUCTURAL DOCUMENTS FOR MASONRY WALL BRACING DETAILS.
- PROVIDE LINTELS AS SHOWN IN STRUCTURAL DRAWINGS ON NON-LOAD BEARING WALL LINTEL SCHEDULE AT ALL NON-BEARING WALL OPENINGS, INCLUDING DUCT OPENINGS.
- ALL PIPING, CONDUITS AND RELATED MECHANICAL AND ELECTRICAL ITEMS SHALL BE CONCEALED WITHIN GYPSUM BOARD FURRING AS REQUIRED IN FINISHED AREAS WHETHER SHOWN ON DRAWINGS OR NOT, UNLESS NOTED OTHERWISE.
- PROVIDE BULLNOSE CORNERS AT VERTICAL CORNERS UNLESS OTHERWISE INDICATED. PROVIDE SQUARE EDGE CMU AT VERTICAL CORNERS WHERE CMU IS SCHEDULED TO RECEIVE CERAMIC TILE.

**KEYNOTE LEGEND**

- |   |   |
|---|---|
| 1 | KEYLESS ACCESS POINT, REFER TO ELECTRICAL DOCUMENTS.                            |
| 2 | CAR ACTIVATED MOTION SENSOR ABOVE OVERHEAD DOOR, REFER TO ELECTRICAL DOCUMENTS. |
| 3 | KEYLESS ACCESS POINT MOUNTED ON BOLLARD, REFER TO ELECTRICAL DOCUMENTS.         |
| 4 | TRENCH DRAIN SHOWN FOR REFERENCE ONLY, REFER TO MECHANICAL DOCUMENTS.           |
| 5 | ALTERNATE BID - CONCRETE CURB AT WASH BAY WALLS.                                |
| 7 | ELECTRICAL EQUIPMENT, REFER TO ELECTRICAL DOCUMENTS.                            |
| 8 | MECHANICAL EQUIPMENT, REFER TO MECHANICAL DOCUMENTS.                            |
| 9 | ROOF ACCESS LADDER.   |



**1 FLOOR PLAN**  
1/8" = 1'-0"



PRELIMINARY  
NOT FOR CONSTRUCTION

THIS DOCUMENT IS THE PROPERTY OF I & S GROUP, INC. AND MAY NOT BE USED, COPIED OR DUPLICATED WITHOUT PRIOR WRITTEN CONSENT.

PROJECT  
**LA CROSSE REGIONAL AIRPORT**  
**CAR RENTAL FACILITY**

LA CROSSE WISCONSIN

| REVISION SCHEDULE |             |    |
|-------------------|-------------|----|
| DATE              | DESCRIPTION | BY |
|                   |             |    |
|                   |             |    |
|                   |             |    |

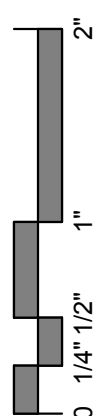
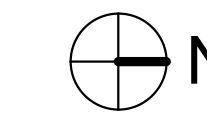
PROJECT NO. 19065  
FILE NAME 19065 Arch R-17.rvt  
DRAWN BY RRW  
DESIGNED BY KMB  
REVIEWED BY KMB  
ORIGINAL ISSUE DATE 03/31/2017  
CLIENT PROJECT NO.

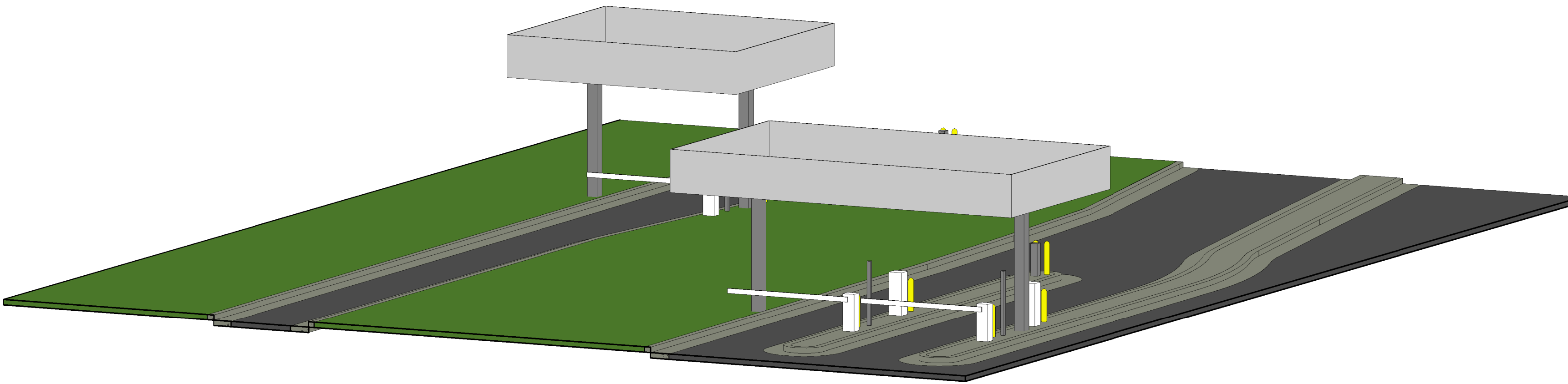
TITLE

**FLOOR PLAN**

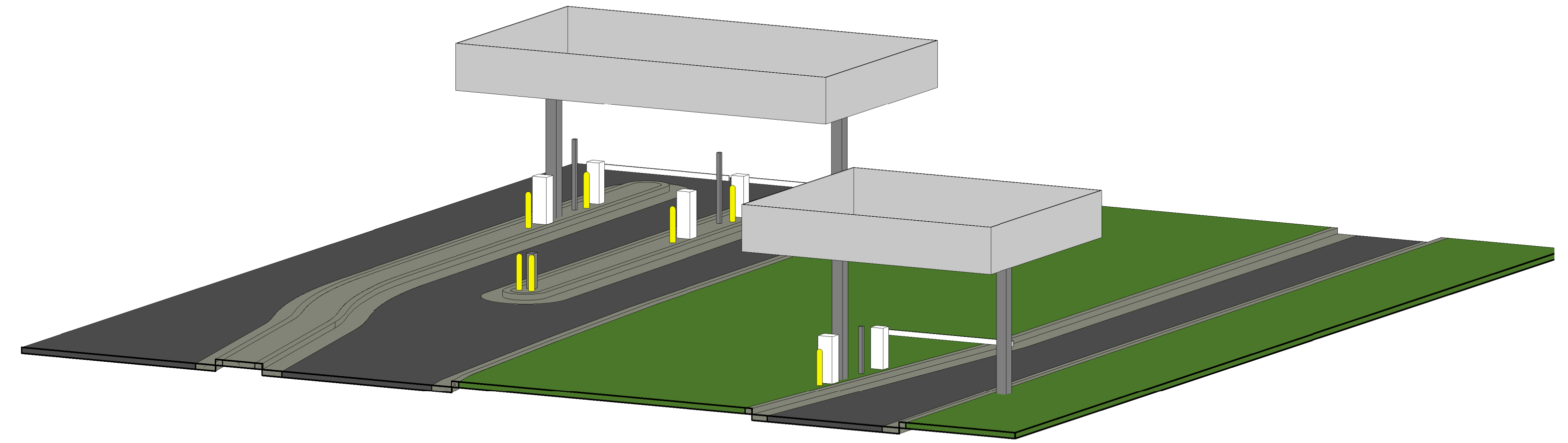
SHEET

**A1-21**

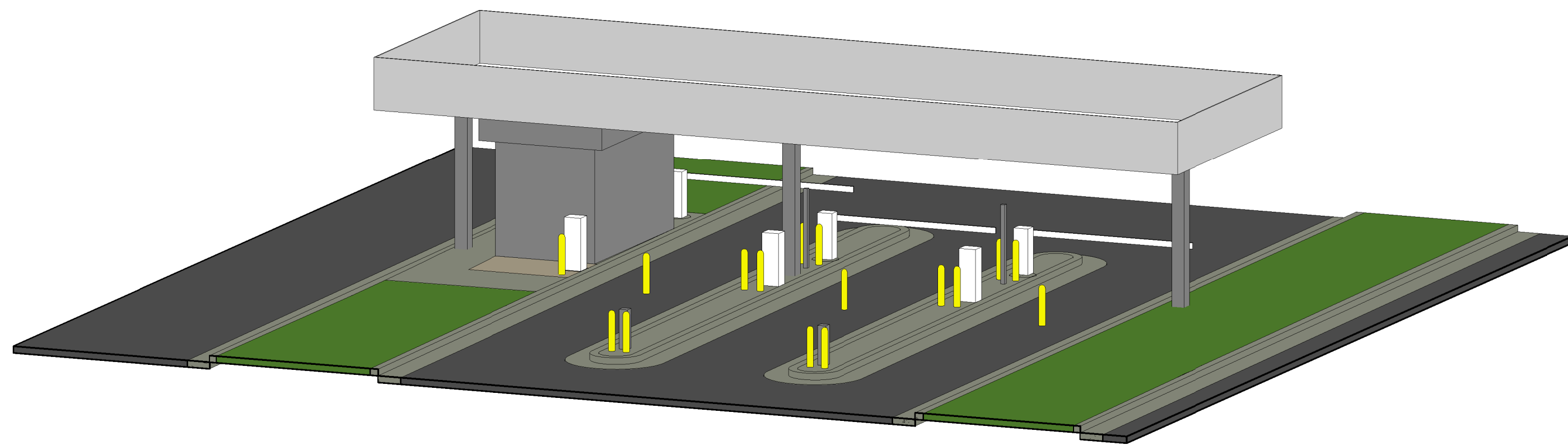




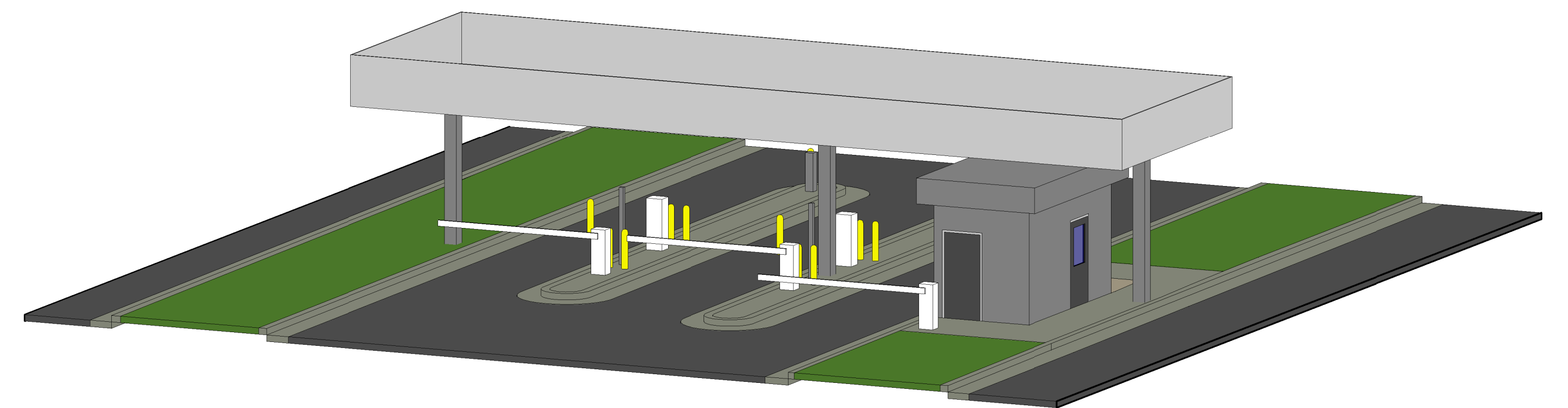
1 ENTRY CANOPY - VIEW FROM NORTH-WEST



4 ENTRY CANOPY - VIEW FROM SOUTH-EAST



2 EXIT CANOPY - VIEW FROM SOUTH-EAST



3 EXIT CANOPY - VIEW FROM NORTH-WEST

3D VIEWS







PRELIMINARY, FOR PLAN REVIEW ONLY



THIS DOCUMENT IS THE PROPERTY OF I & S GROUP, INC. AND MAY NOT BE USED, COPIED OR DUPLICATED WITHOUT PRIOR WRITTEN CONSENT.

PROJECT  
**LA CROSSE REGIONAL AIRPORT TICKET BOOTH CANOPIES**

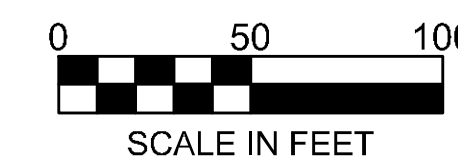
LA CROSSE WISCONSIN

| REVISION SCHEDULE |             |    |
|-------------------|-------------|----|
| DATE              | DESCRIPTION | BY |
|                   |             |    |
|                   |             |    |
|                   |             |    |
|                   |             |    |
|                   |             |    |

|                     |                 |
|---------------------|-----------------|
| PROJECT NO.         | 16-19065        |
| FILE NAME           | 19065-2 C3 SITE |
| DRAWN BY            | ADB             |
| DESIGNED BY         | KBR             |
| REVIEWED BY         | WAK             |
| ORIGINAL ISSUE DATE | 03/31/2017      |
| CLIENT PROJECT NO.  | -               |

TITLE  
**OVERALL SITE PLAN**

SHEET  
**C3-10**







PRELIMINARY  
NOT FOR CONSTRUCTION

THIS DOCUMENT IS THE PROPERTY OF I & S GROUP, INC. AND MAY NOT BE USED, COPIED OR DUPLICATED WITHOUT PRIOR WRITTEN CONSENT.

PROJECT

# LA CROSSE AIRPORT HANGAR

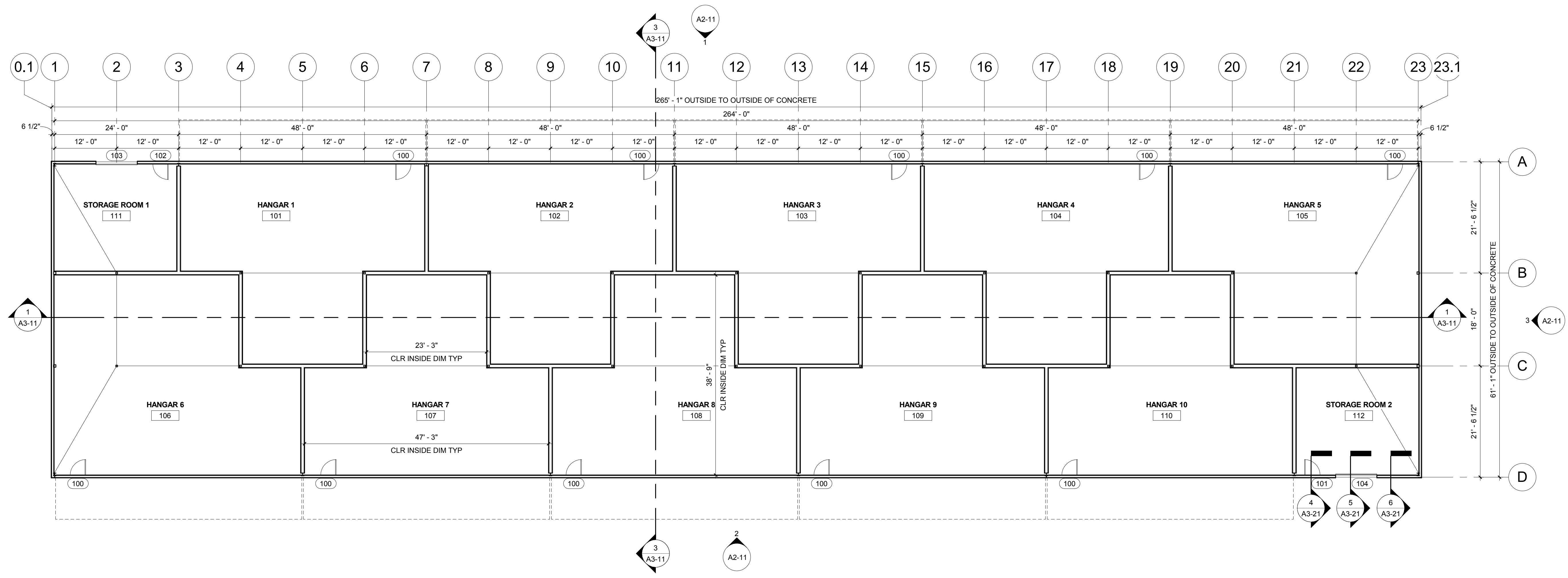
LA CROSSE WISCONSIN

| REVISION SCHEDULE |             |    |
|-------------------|-------------|----|
| DATE              | DESCRIPTION | BY |
|                   |             |    |
|                   |             |    |
|                   |             |    |
|                   |             |    |
|                   |             |    |
|                   |             |    |
|                   |             |    |
|                   |             |    |
|                   |             |    |

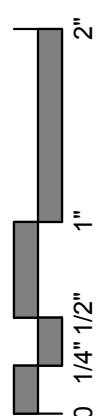
|                     |          |
|---------------------|----------|
| PROJECT NO.         | 17-19923 |
| FILE NAME           |          |
| DRAWN BY            | MPD      |
| DESIGNED BY         | KMB      |
| REVIEWED BY         | KMB      |
| ORIGINAL ISSUE DATE |          |
| CLIENT PROJECT NO.  |          |

TITLE  
**FIRST FLOOR PLAN**

SHEET  
**A1-21**



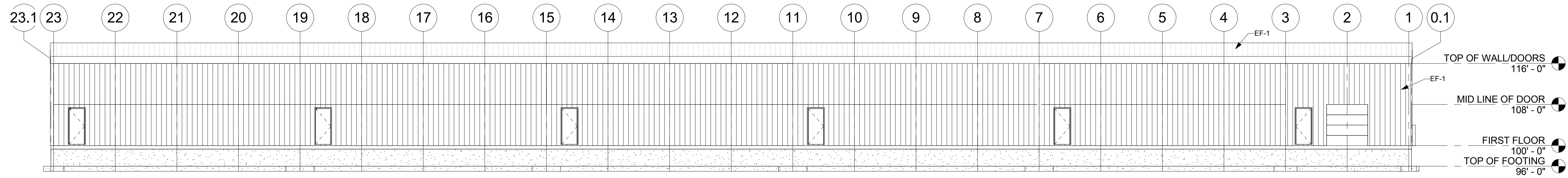
1 FIRST FLOOR PLAN  
3/32" = 1'-0"



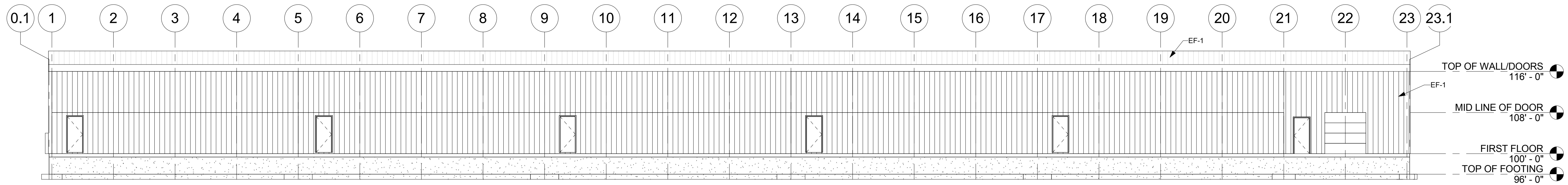
| EXTERIOR FINISH SCHEDULE |                         |       |          |
|--------------------------|-------------------------|-------|----------|
| MARK                     | MATERIAL                | COLOR | COMMENTS |
| EF-1                     | PREFINISHED METAL PANEL | WHITE |          |

ISG

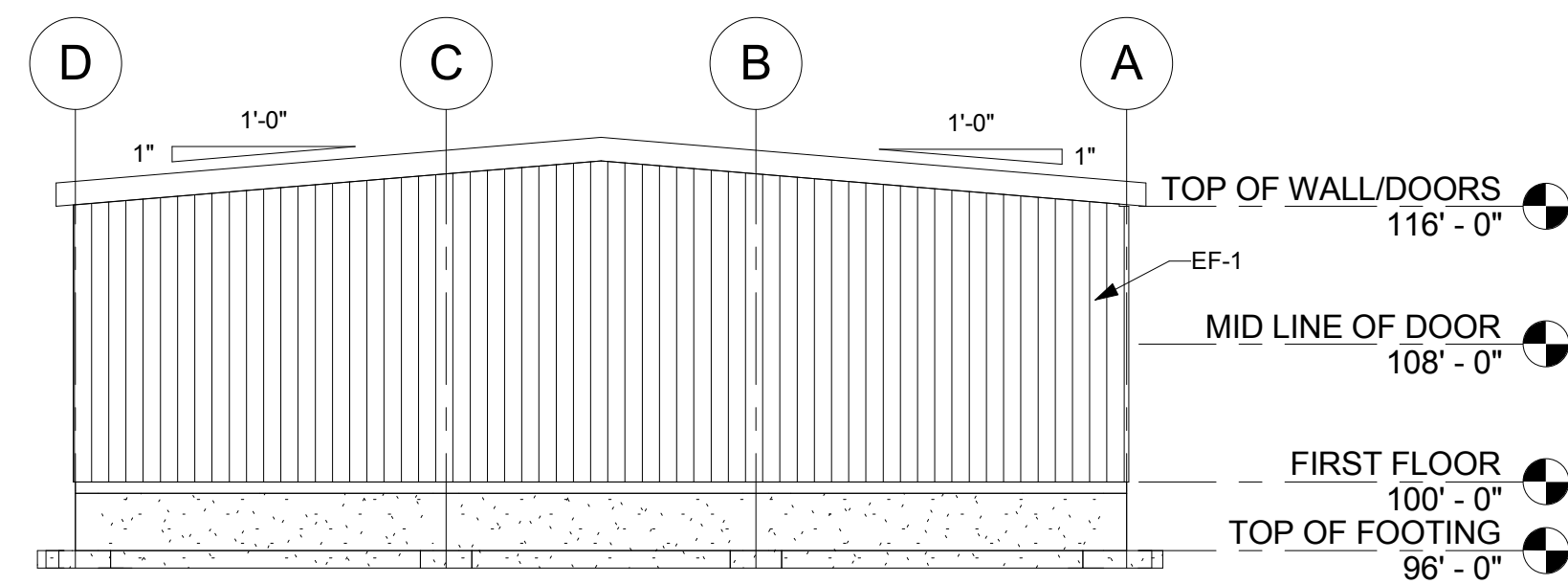
PRELIMINARY  
NOT FOR CONSTRUCTION



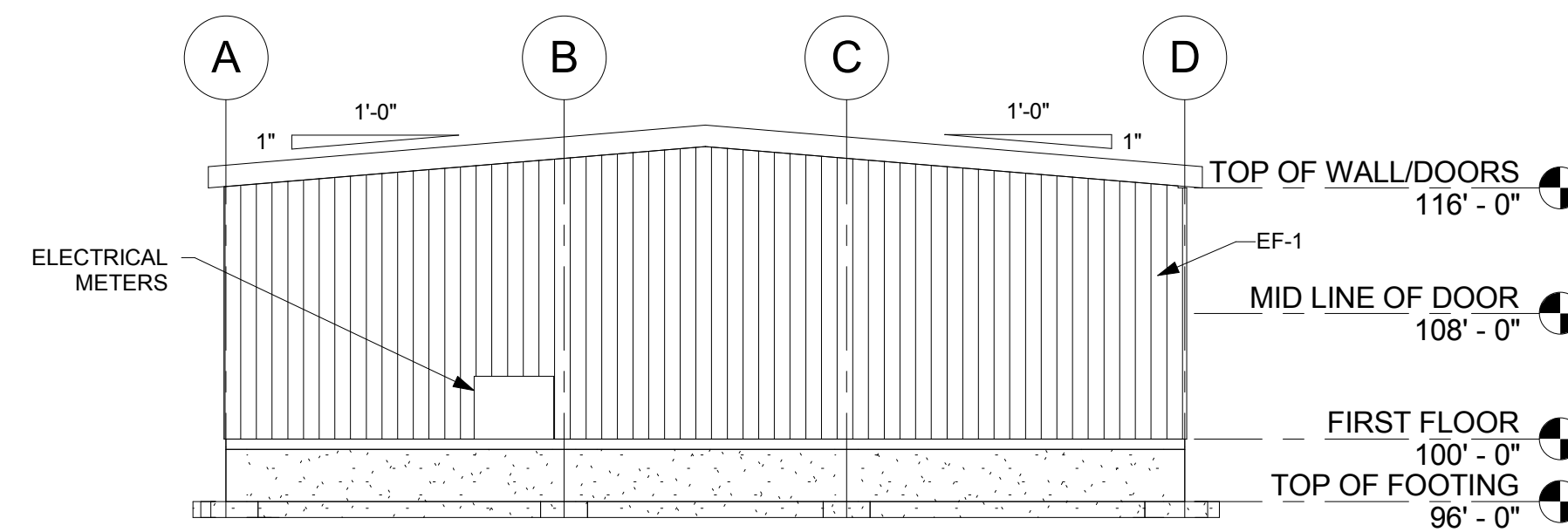
1 EAST ELEVATION  
3/32" = 1'-0"



2 WEST ELEVATION  
3/32" = 1'-0"



3 SOUTH ELEVATION  
3/32" = 1'-0"



4 NORTH ELEVATION  
3/32" = 1'-0"

THIS DOCUMENT IS THE PROPERTY OF I & S GROUP, INC. AND MAY NOT BE USED, COPIED OR DUPLICATED WITHOUT PRIOR WRITTEN CONSENT.

PROJECT

**LA CROSSE AIRPORT HANGAR**

LA CROSSE WISCONSIN

| REVISION SCHEDULE |             |    |
|-------------------|-------------|----|
| DATE              | DESCRIPTION | BY |
|                   |             |    |
|                   |             |    |
|                   |             |    |

PROJECT NO. 17-19923  
FILE NAME  
DRAWN BY MPD  
DESIGNED BY KMB  
REVIEWED BY KMB  
ORIGINAL ISSUE DATE  
CLIENT PROJECT NO.

TITLE

**EXTERIOR ELEVATIONS**

SHEET

**A2-11**

