



Reynolds
urban
Design

FEHDESIGN.COM

SCIENCE CENTER OF IOWA

LOCATION / DES MOINES, IOWA

CONCEPTUAL DESIGN

TABLE OF CONTENTS

01 SITE CONCEPTS

02 BUILDING CONCEPTS





Iowa
Creative Learning

SITE CONCEPTS

01

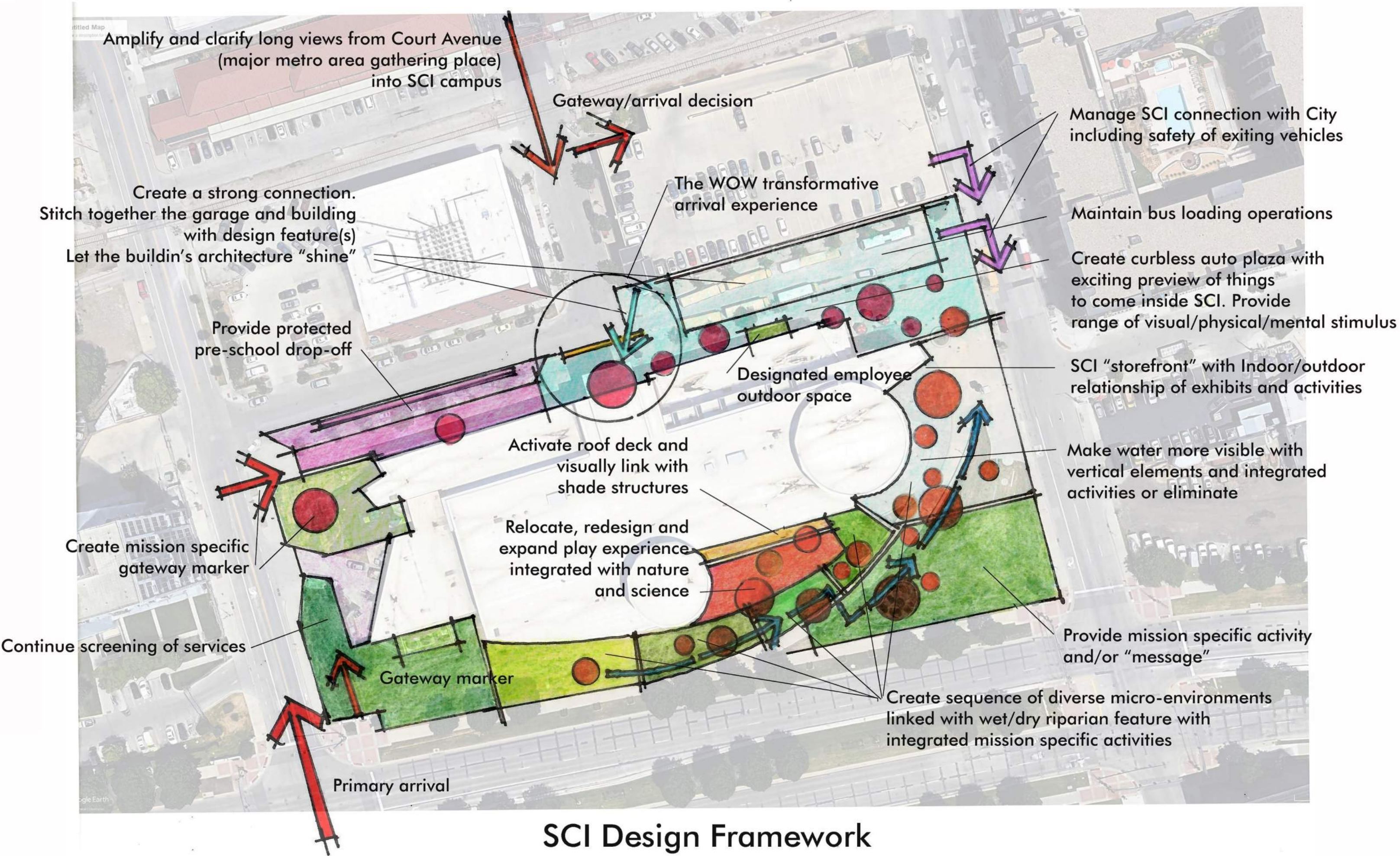


SCI is:

- Where Des Moines “comes together”
 - Downtown
 - The Riverfront
 - East Village
 - Court Avenue
 - Ballpark District
 - Gray’s Landing

Almost two City blocks in a strategic location.

An opportunity to become more visible and engaged in the community.



Amplify and clarify long views from Court Avenue
(major metro area gathering place)
into SCI campus

Gateway/arrival decision

Manage SCI connection with City
including safety of exiting vehicles

Create a strong connection.
Stitch together the garage and building
with design feature(s)
Let the buildin's architecture "shine"

The WOW transformative
arrival experience

Maintain bus loading operations

Provide protected
pre-school drop-off

Create curbless auto plaza with
exciting preview of things
to come inside SCI. Provide
range of visual/physical/mental stimulus

Designated employee
outdoor space

SCI "storefront" with Indoor/outdoor
relationship of exhibits and activities

Activate roof deck and
visually link with
shade structures

Make water more visible with
vertical elements and integrated
activities or eliminate

Create mission specific
gateway marker

Relocate, redesign and
expand play experience
integrated with nature
and science

Provide mission specific activity
and/or "message"

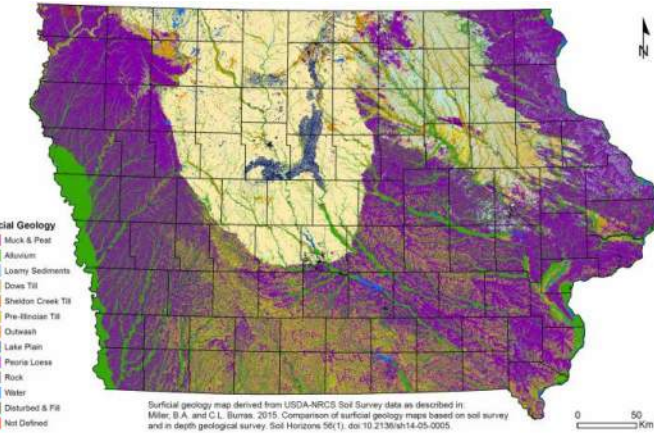
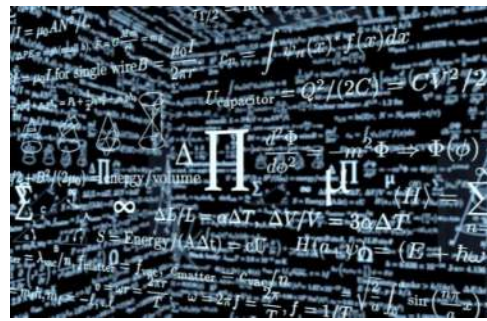
Continue screening of services

Gateway marker

Create sequence of diverse micro-environments
linked with wet/dry riparian feature with
integrated mission specific activities

Primary arrival

SCI Design Framework



Benchmark/Inspirations



Undefined, open urban space. No sense of arrival or welcome. As 5th evolves into a two-way street this edge will become even more important

Urban and hidden. Perceived as stark, dark, cold and windy.

Ambiguous...undefined SCI/civic space. Vast, harsh environment. Not welcoming.

Hot, glaring environment in summer. Protected winter micro-climate

Highest visibility...“front lawn” but no entry...no evidence of activity or SCI mission.

Ambiguous but strategic corner. Major arrival experience with need to screen services and mechanicals

SCI Outdoor Rooms

Main Entry Plaza
- pavement graphics, curbs, bollards
- raised seat ledge planters
- light features

Bus Plaza
- flush curbs, pavement graphics
- bollards, lighting, bio-retention
- staff/volunteers outdoor space
- green wall
- 3rd Street bumpouts

Daycare Drop-Off
- bio-retention island
- flush curbs, pavement graphics
- seat walls, lighting, signage

East Plaza
- waterfall feature
- flexible event and exhibit space
- visitor dining
- performance space

Roof Garden/Plaza
- planting trays
- perimeter plantings
- optional furniture, lighting

Balcony
- water inspired canopy
- telescope overlook and display

Expanded Daycare Play
- circuits of play
- natural play features
- perimeter security
- resilient surface
- catfish structure
- dragonfly shade

Northwest Gateway
- unique streetscape
- permanent exhibit/play shade
- optional "billboard" on parking lot perimeter

- mown turf
- no-mow fescue
- tall grass prairie
- understory/shrubs

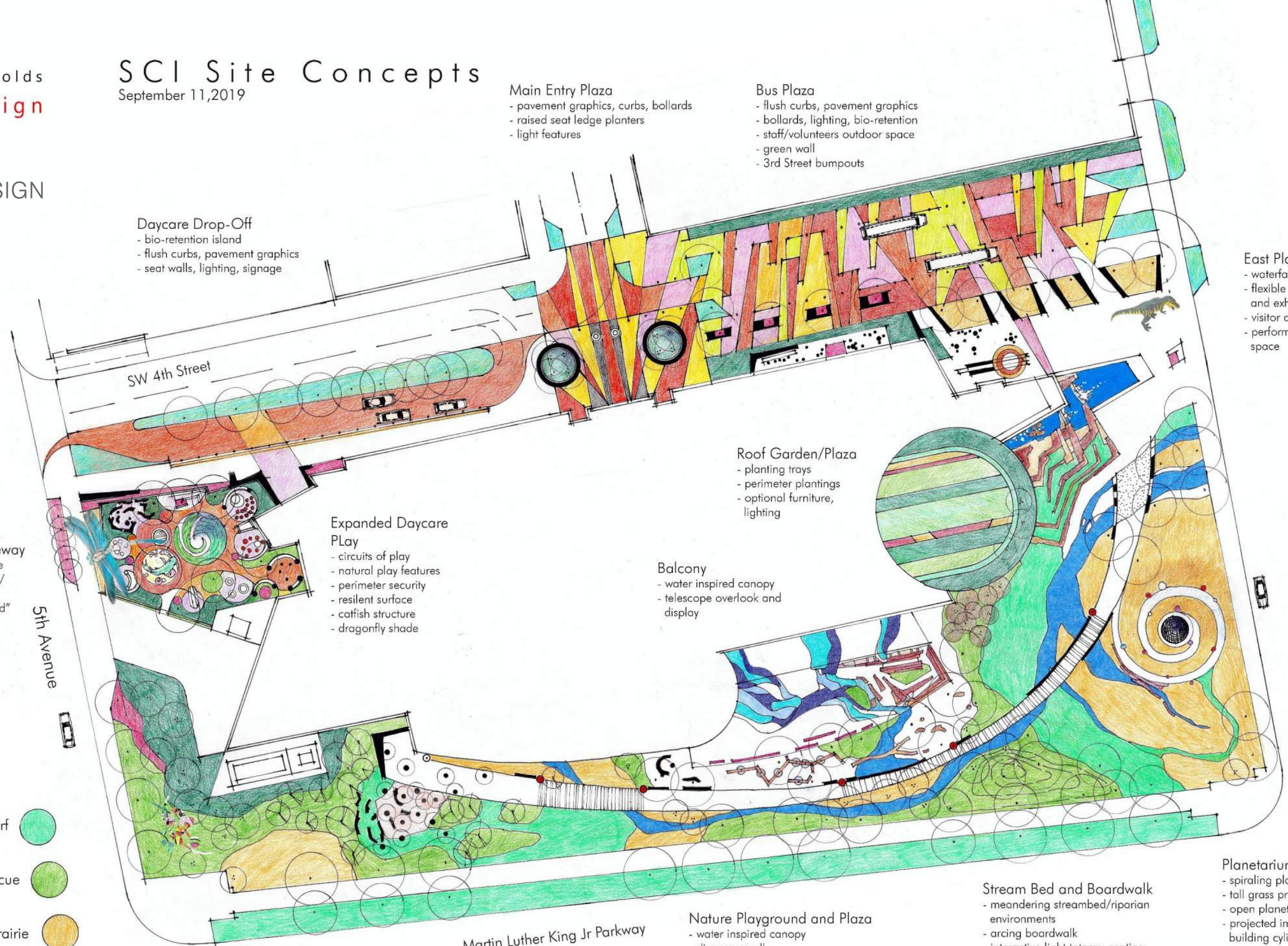
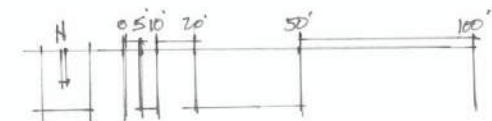
Southwest Arrival
- dense plantings
- kinetic arrival marker

Evergreen Discovery Grove
- natural and man-made evergreen trees
- "fallen" logs, trunk chips, lighting, graphics

Nature Playground and Plaza
- water inspired canopy
- discovery wall
- flexible event/exhibit patio
- stone canyon climb/overlook/slide
- stepping stones/log
- group swings

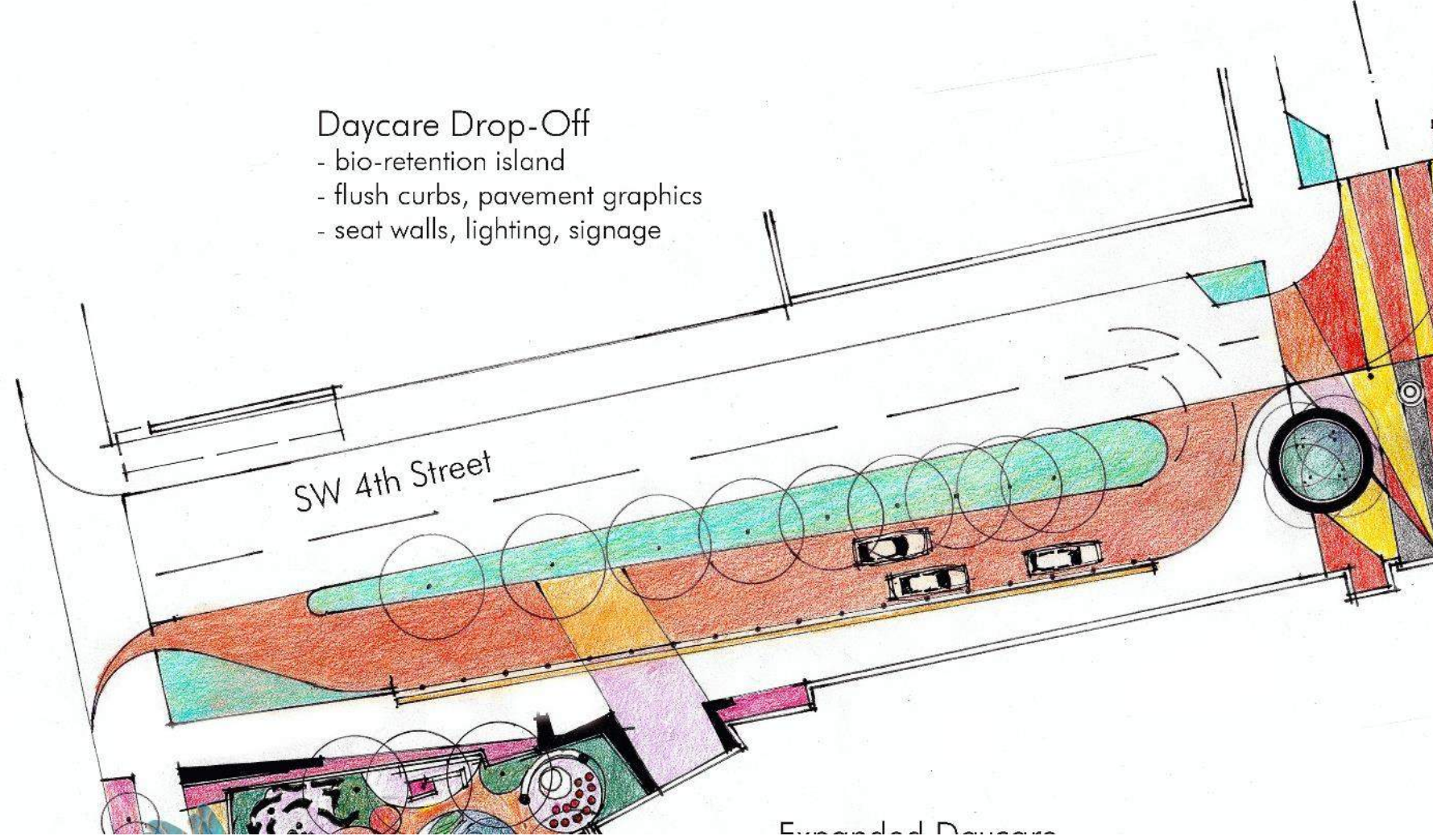
Stream Bed and Boardwalk
- meandering streambed/riparian environments
- arcing boardwalk
- interactive light totems, seating
- undulating savannah

Planetarium Hill
- spiraling planet walk
- tall grass prairie
- open planetarium
- projected imagery on building cylinder



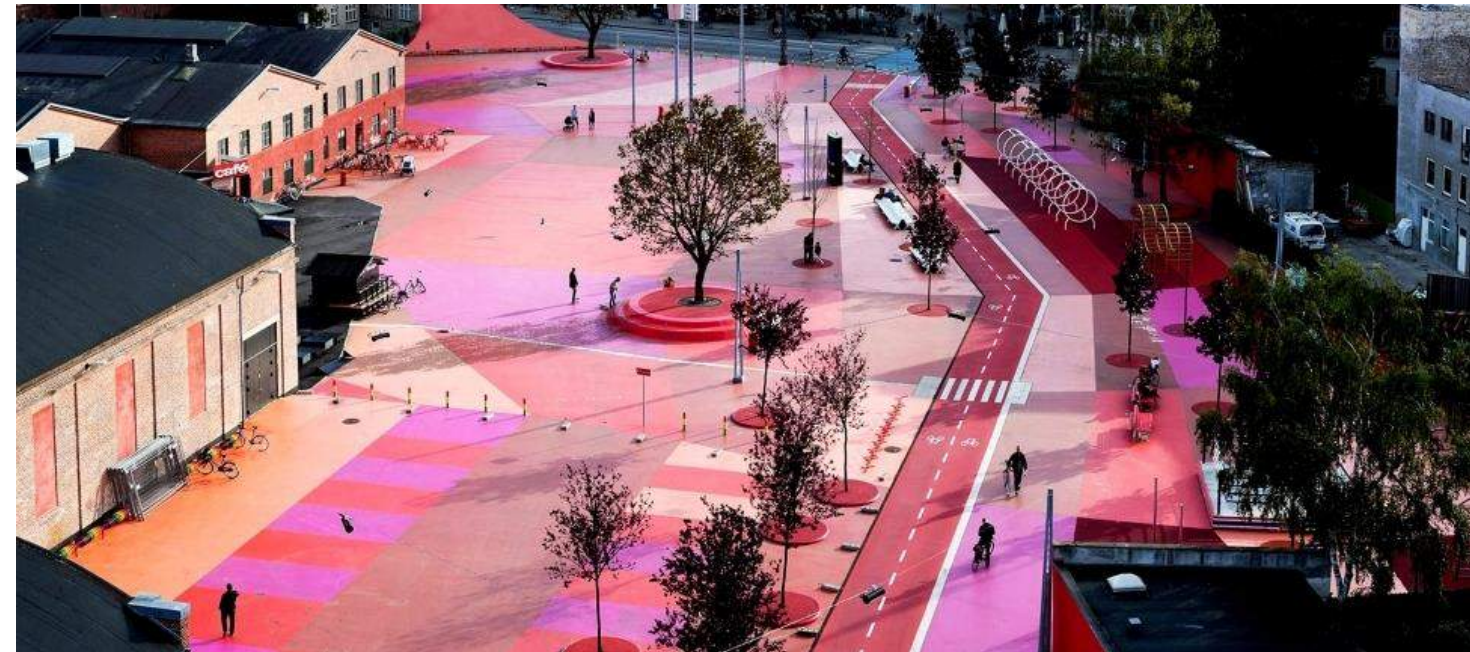
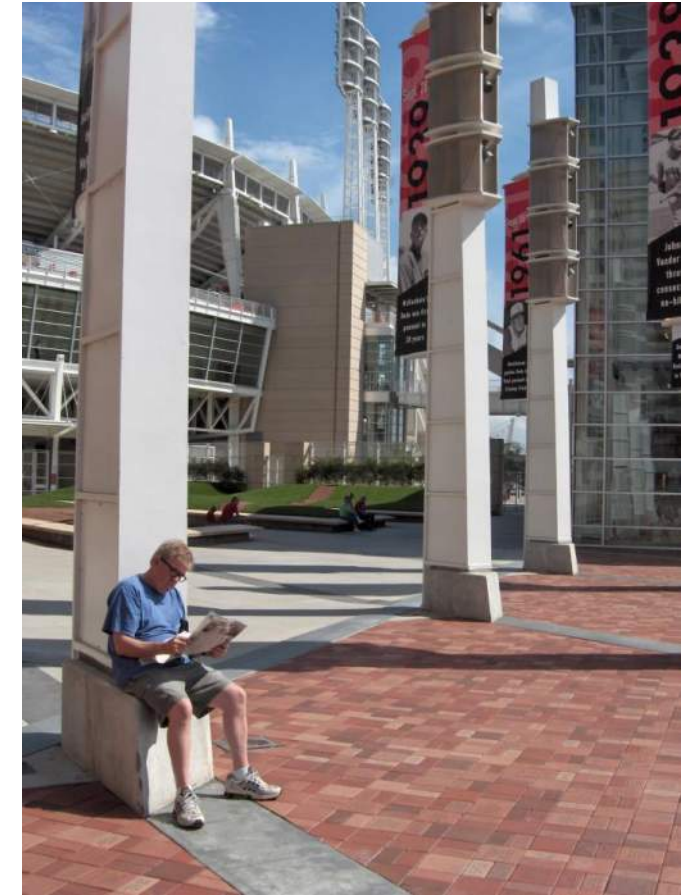
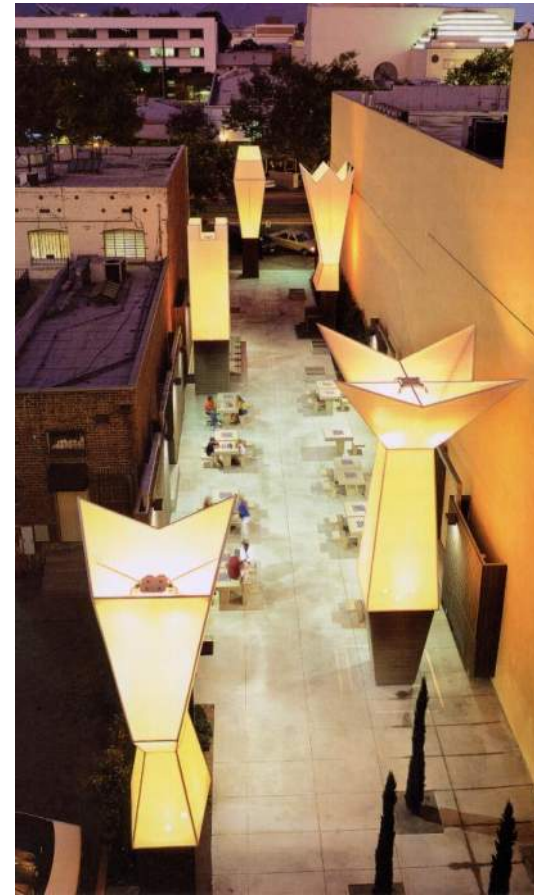
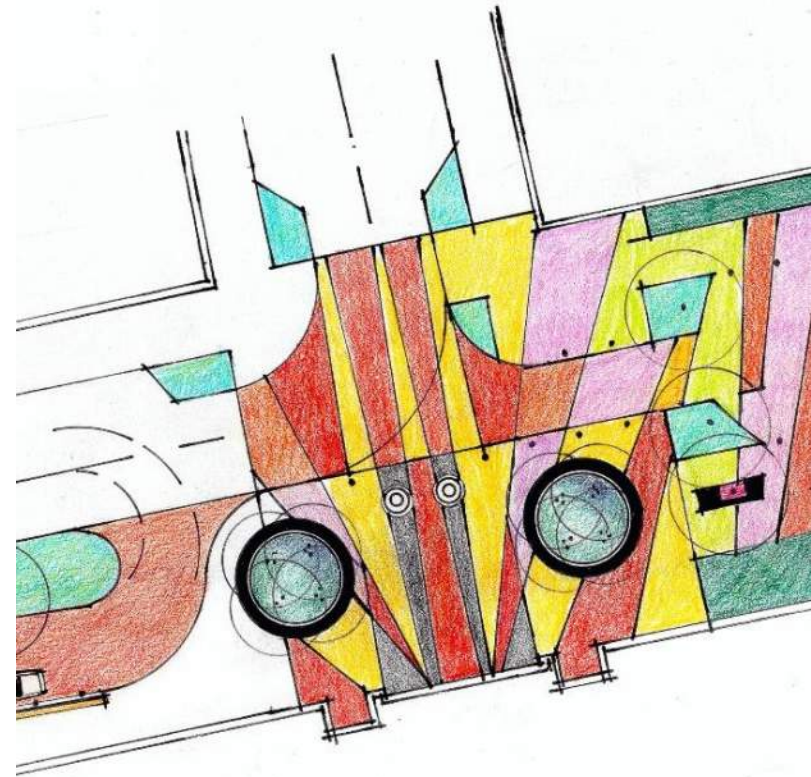
Daycare Drop-Off

- bio-retention island
- flush curbs, pavement graphics
- seat walls, lighting, signage



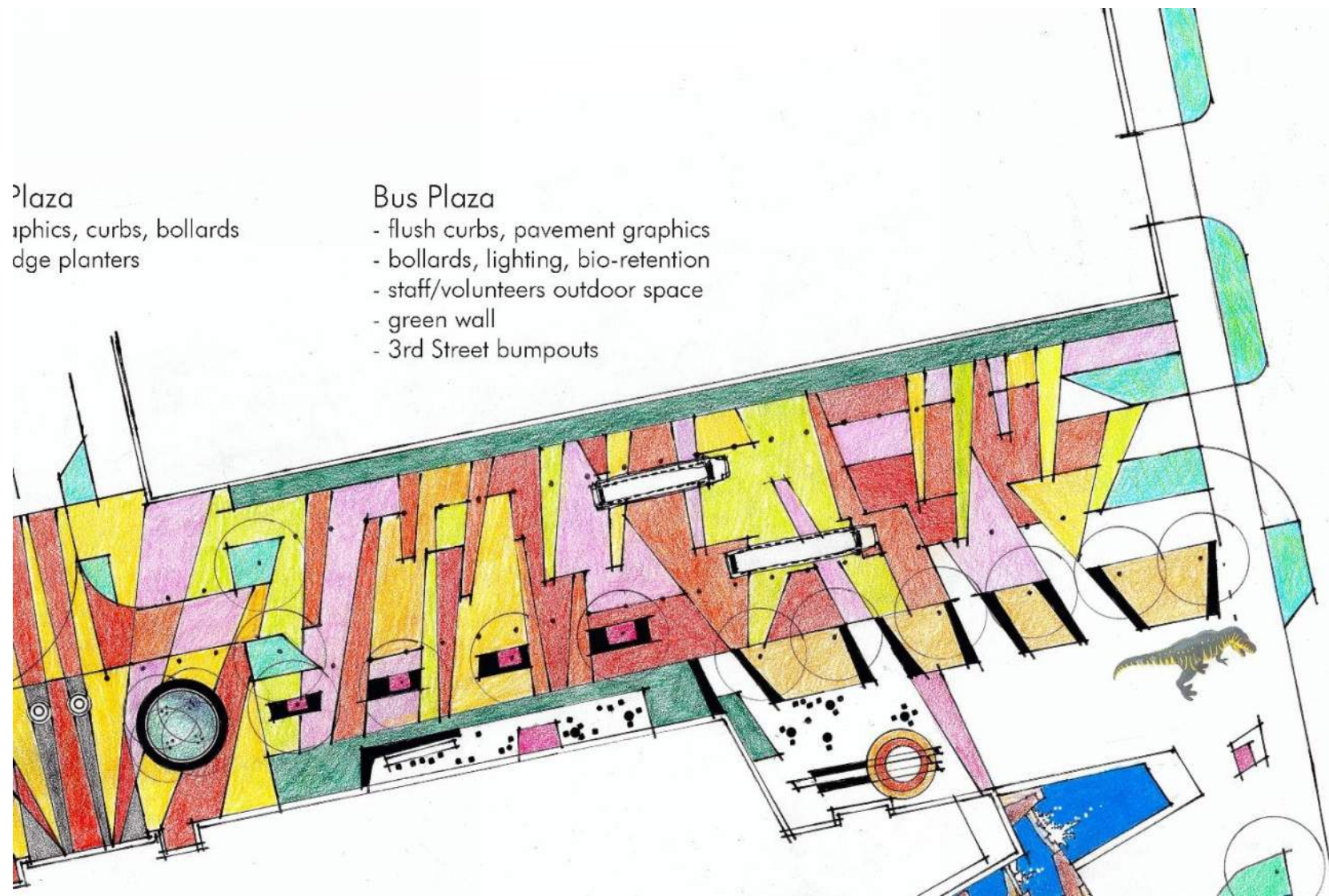
Main Entry Plaza

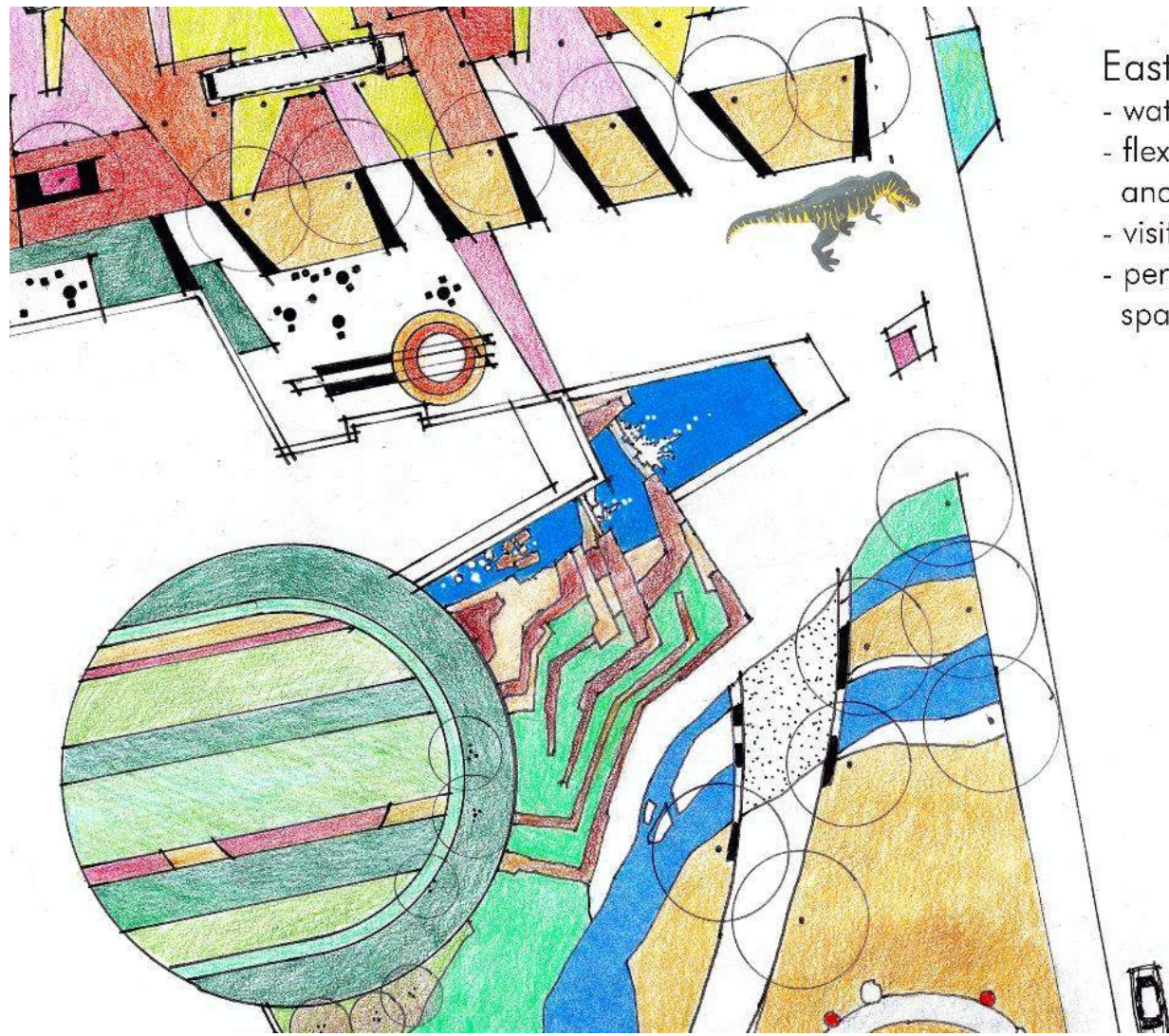
- pavement graphics, curbs, bollards
- raised seat ledge planters
- light features



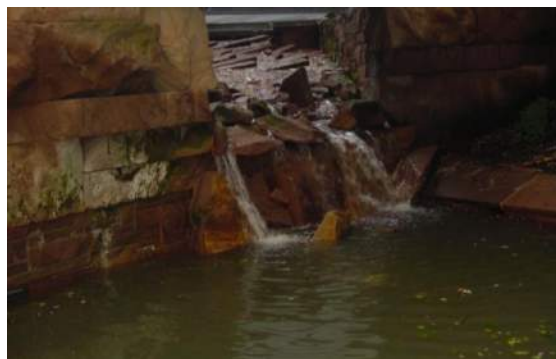
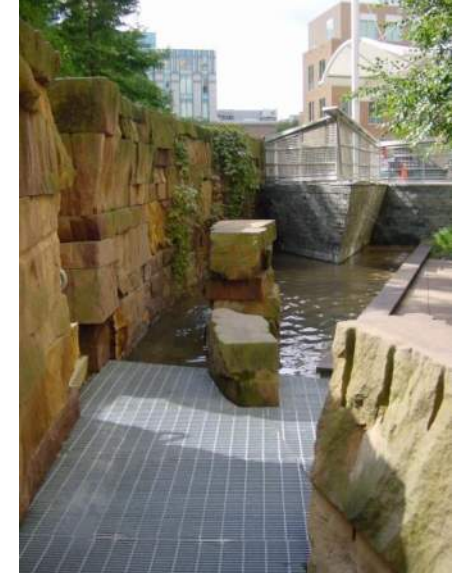
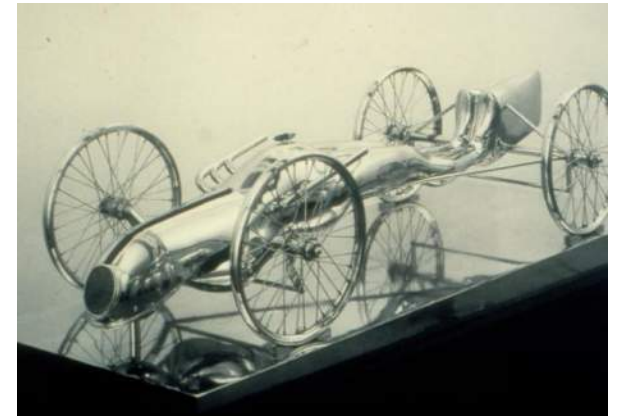
Plaza
graphics, curbs, bollards
edge planters

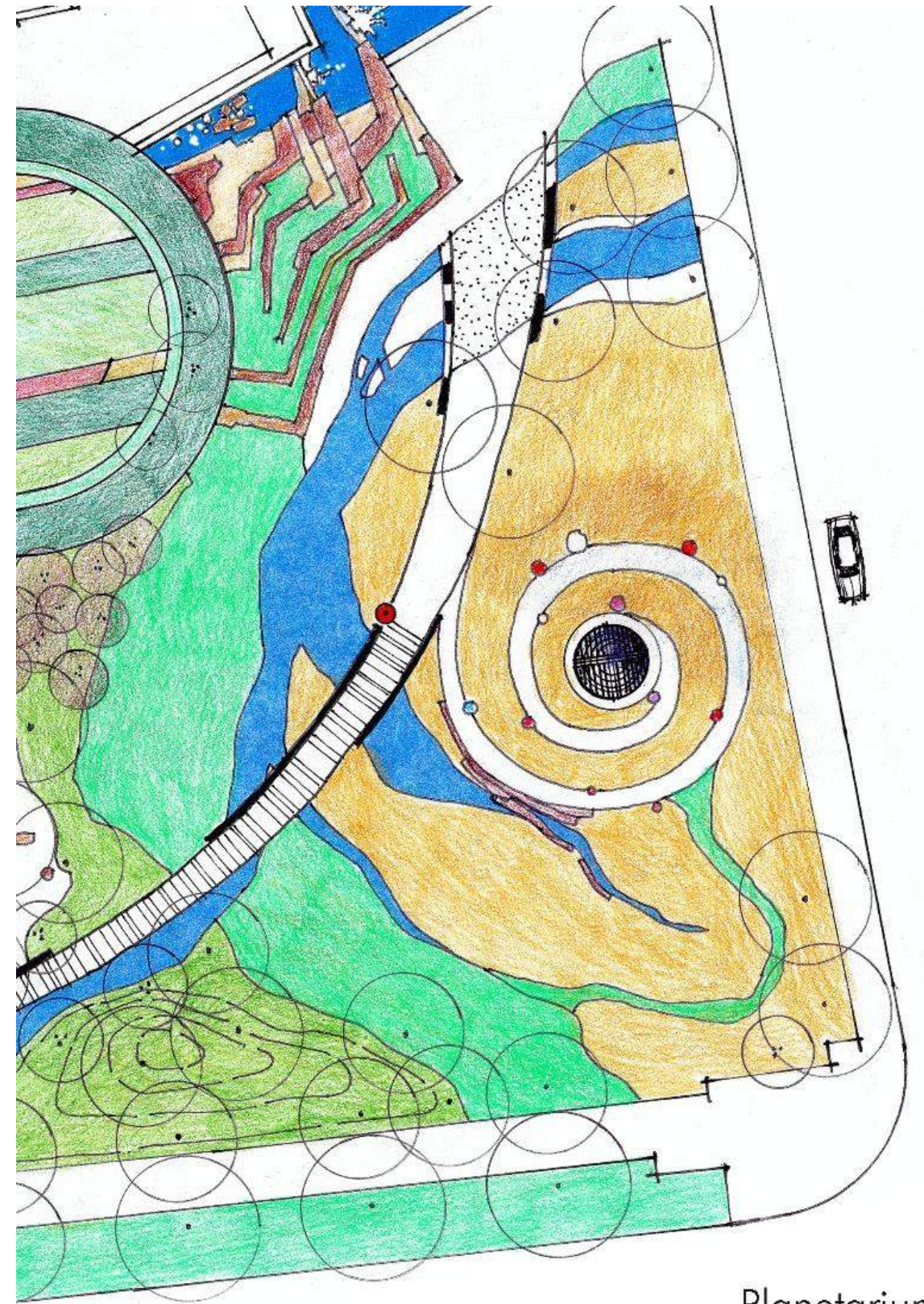
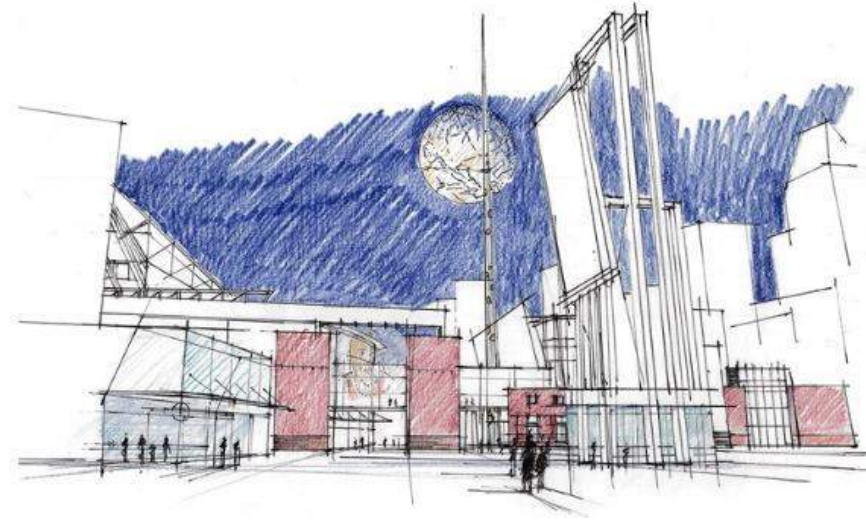
Bus Plaza
- flush curbs, pavement graphics
- bollards, lighting, bio-retention
- staff/volunteers outdoor space
- green wall
- 3rd Street bumpouts



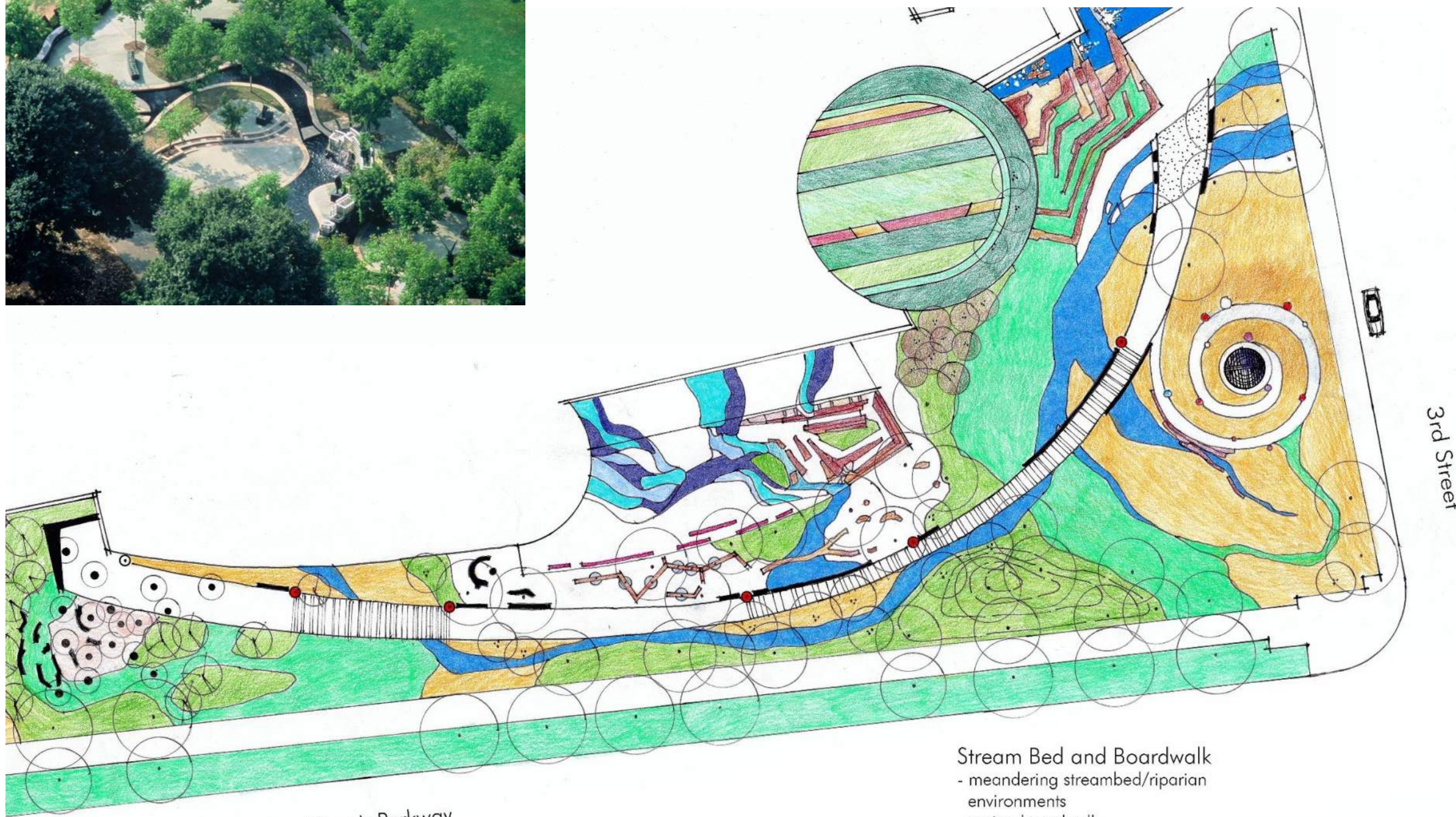


East Plaza
 - waterfall feature
 - flexible event
 and exhibit space
 - visitor dining
 - performance
 space





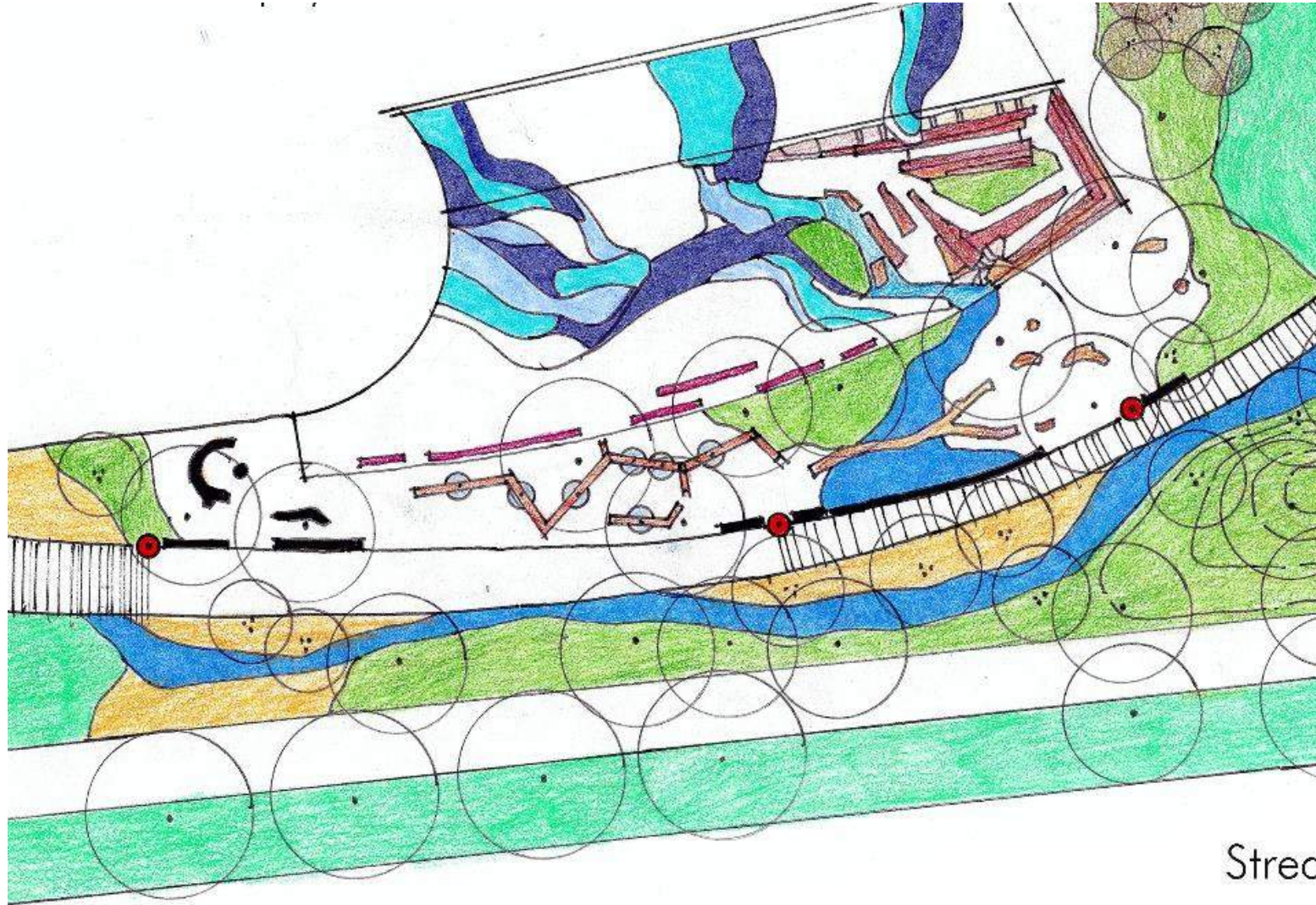
Planetarium Hill
- spiraling planet walk
- tall grass prairie
- open planetarium
- projected imagery on building cylinder



Martin Luther King Jr Parkway

3rd Street

- Stream Bed and Boardwalk
- meandering streambed/riparian environments
 - arcing boardwalk
 - interactive light totems, seating
 - undulating savannah



parkway

Nature Playground and Plaza

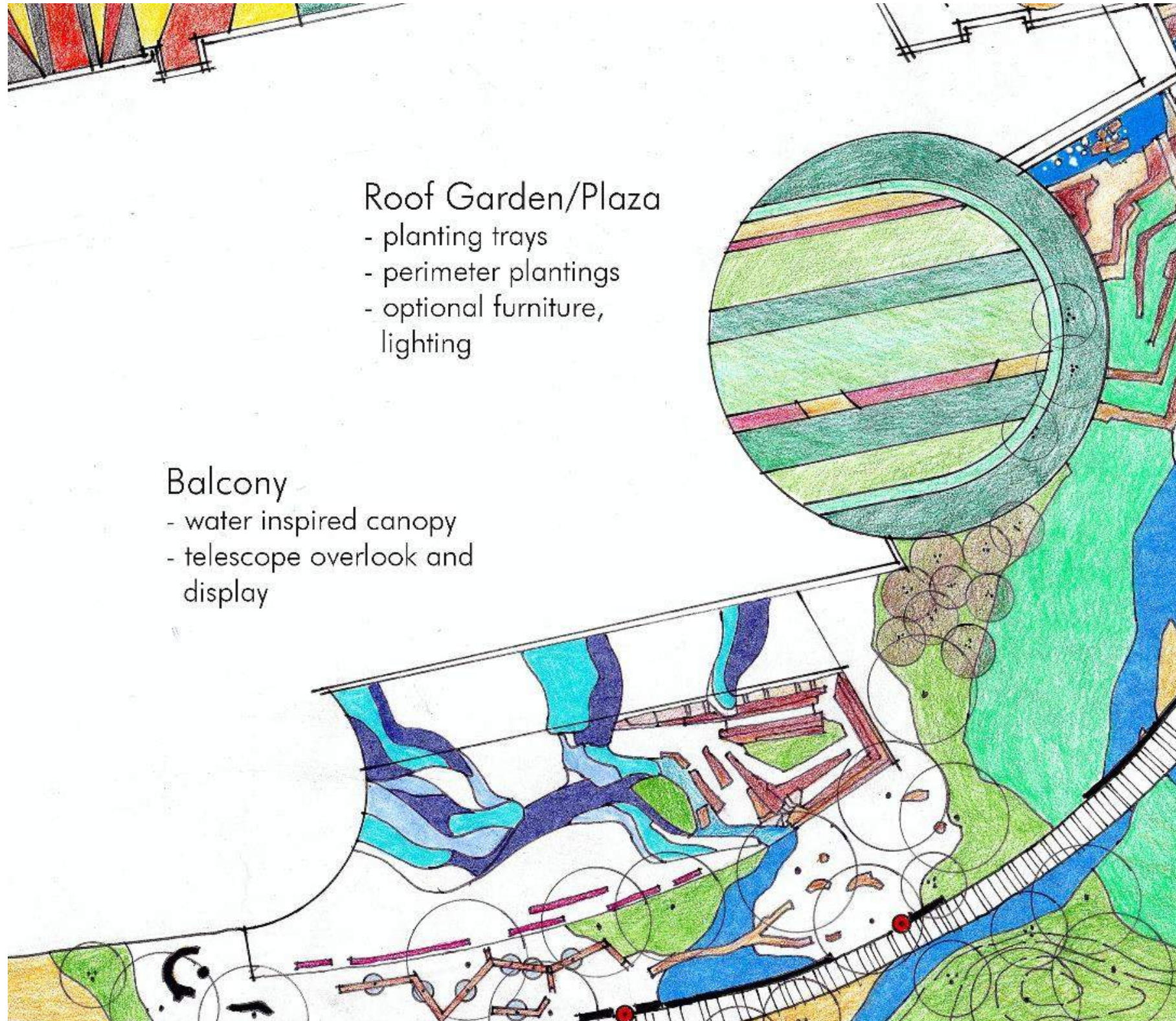
- water inspired canopy
- discovery wall
- flexible event/exhibit patio
- stone canyon climb/overlook/slide
- stepping stones/log
- group swings

Stream

- near
- environ
- arcin
- interc
- undu

ics





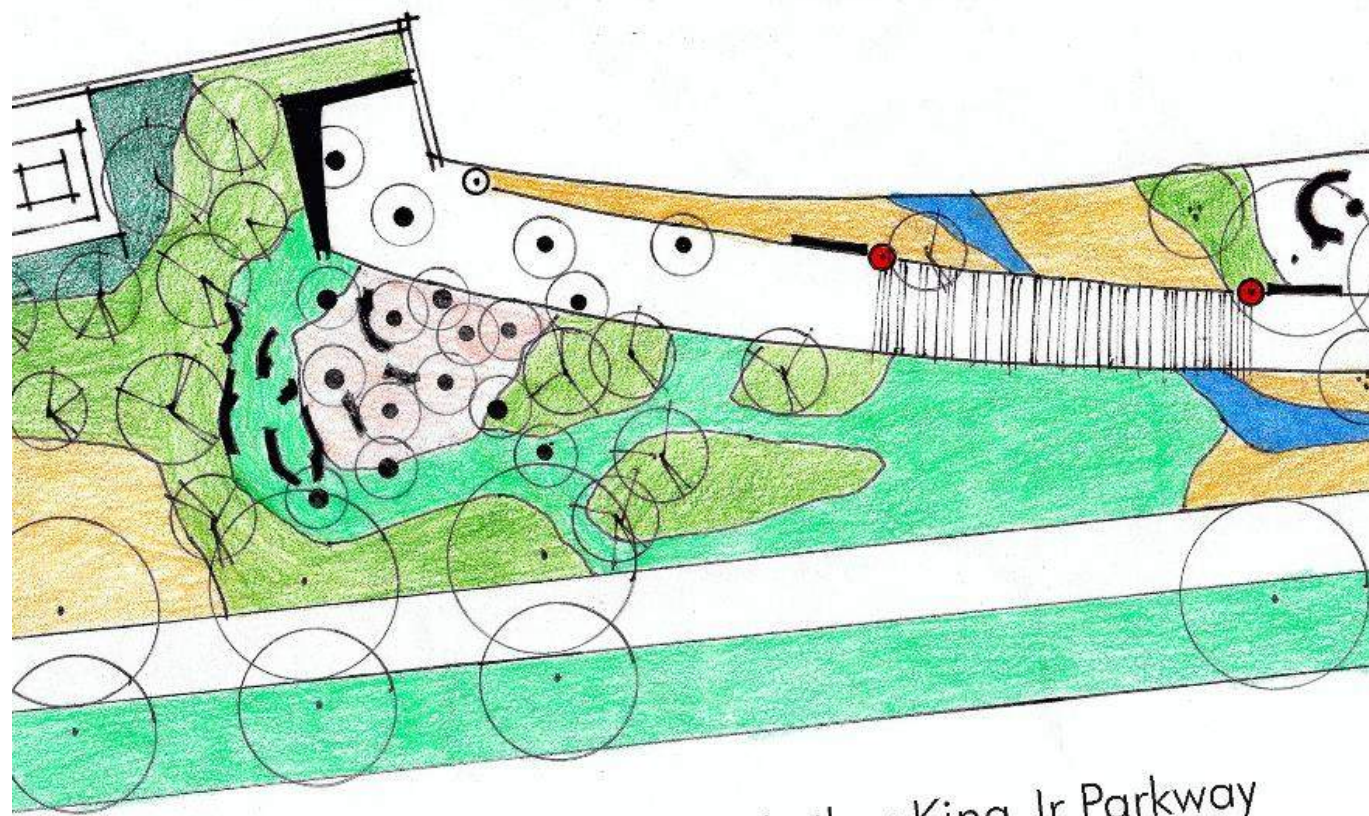
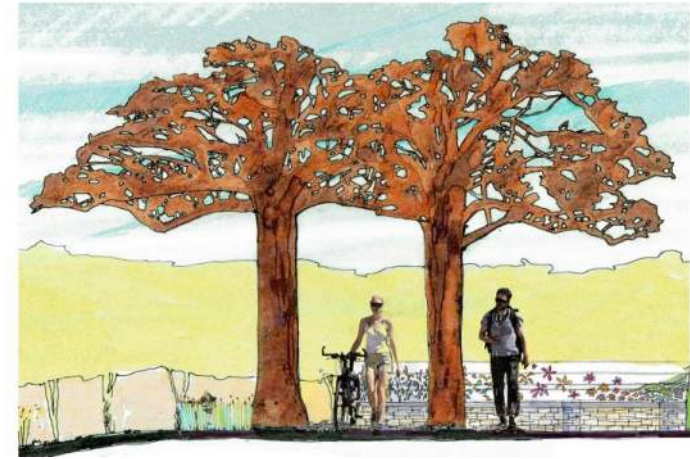
Roof Garden/Plaza

- planting trays
- perimeter plantings
- optional furniture, lighting

Balcony

- water inspired canopy
- telescope overlook and display

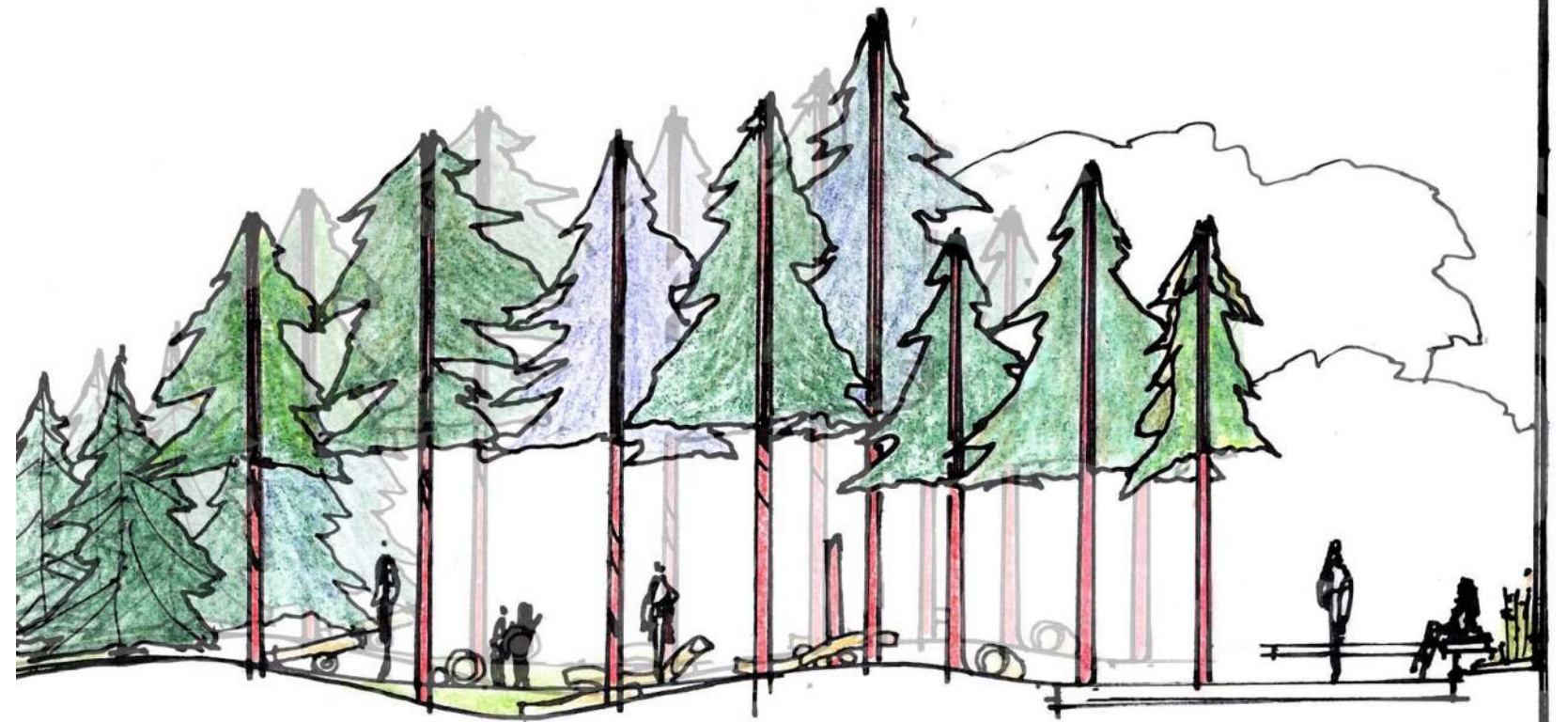


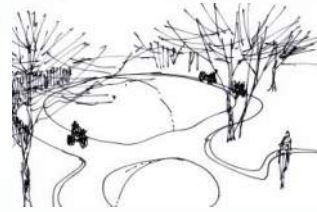


Martin Luther King Jr Parkway

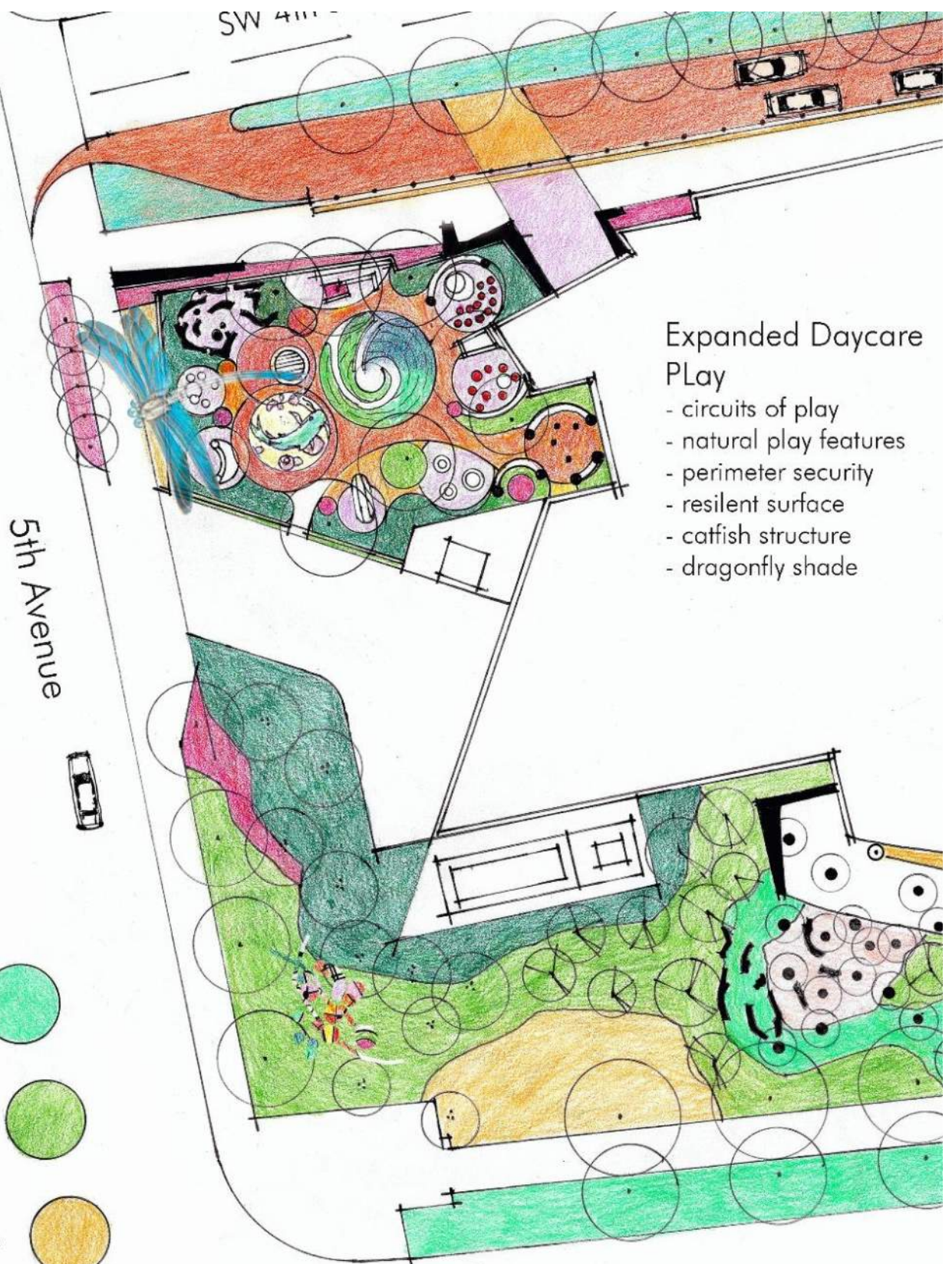
Evergreen Discovery Grove

- natural and man-made evergreen trees
- "fallen" logs, trunk chips, lighting, graphics





Northwest Gateway
 - unique streetscape
 - permanent exhibit/
 play shade
 - optional "billboard"
 on parking lot
 perimeter

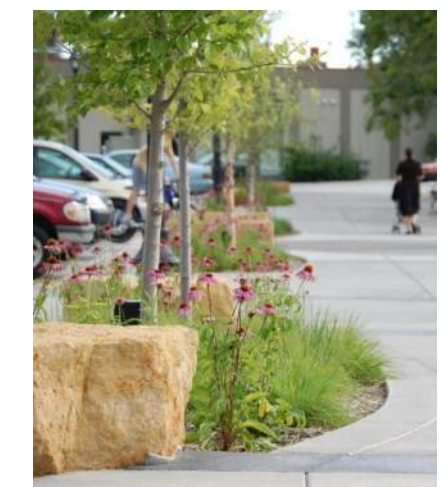
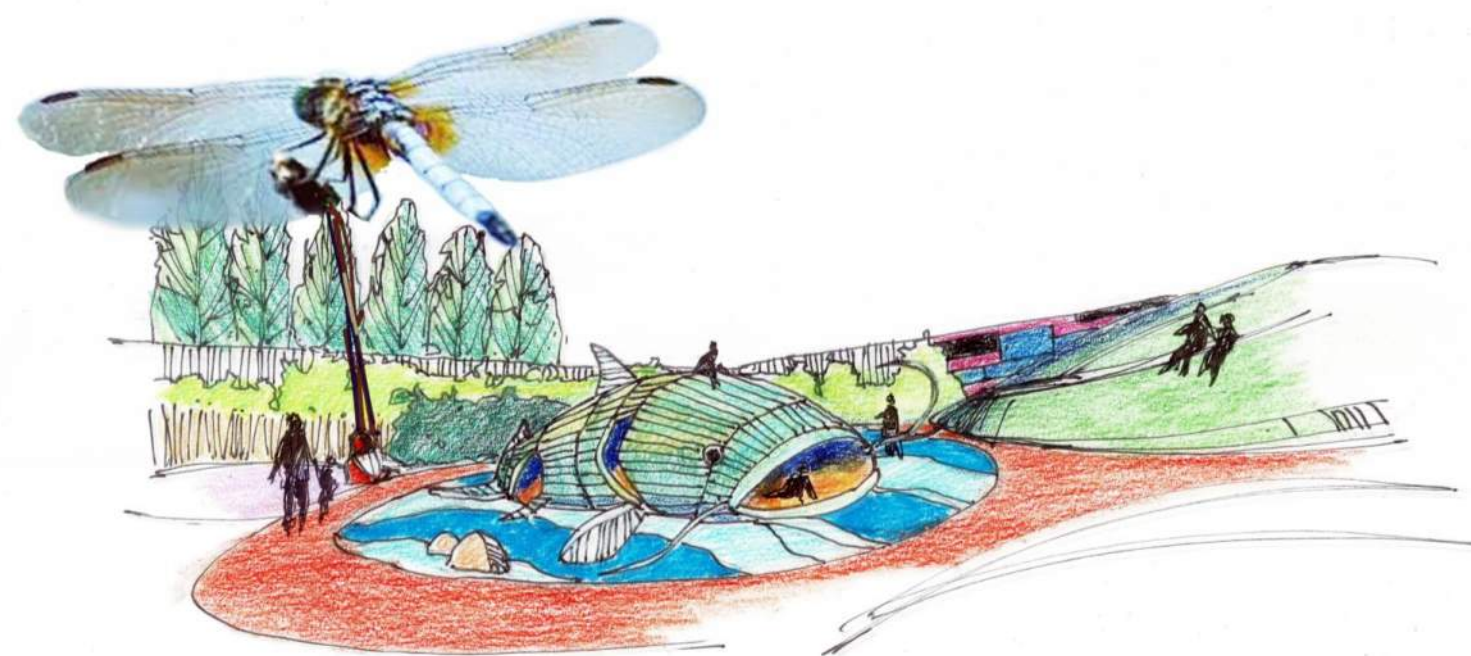


Expanded Daycare Play
 - circuits of play
 - natural play features
 - perimeter security
 - resilient surface
 - catfish structure
 - dragonfly shade

- mown turf 
- no-mow fescue 
- tall grass prairie 
- understory/shrubs 

Southwest Arrival
 - dense plantings
 - kinetic arrival marker

Evergreen
 - natural and
 - "fallen" logs

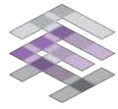




Reynolds
urban
Design

SCI Site Concepts

September 11, 2019



FEH DESIGN

Main Entry Plaza
- pavement graphics, curbs, bollards
- raised seat ledge planters
- light features

Bus Plaza
- flush curbs, pavement graphics
- bollards, lighting, bio-retention
- staff/volunteers outdoor space
- green wall
- 3rd Street bumpouts

Daycare Drop-Off
- bio-retention island
- flush curbs, pavement graphics
- seat walls, lighting, signage

East Plaza
- waterfall feature
- flexible event and exhibit space
- visitor dining
- performance space

SW 4th Street

Roof Garden/Plaza
- planting trays
- perimeter plantings
- optional furniture, lighting

Northwest Gateway
- unique streetscape
- permanent exhibit/play shade
- optional "billboard" on parking lot perimeter

Expanded Daycare Play
- circuits of play
- natural play features
- perimeter security
- resilient surface
- catfish structure
- dragonfly shade

Balcony
- water inspired canopy
- telescope overlook and display

5th Avenue

3rd Street

mown turf



no-mow fescue



tall grass prairie



understory/shrubs



Southwest Arrival
- dense plantings
- kinetic arrival marker

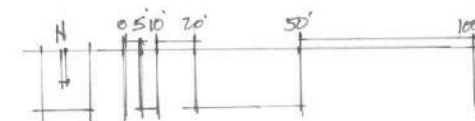
Evergreen Discovery Grove
- natural and man-made evergreen trees
- "fallen" logs, trunk chips, lighting, graphics

Nature Playground and Plaza
- water inspired canopy
- discovery wall
- flexible event/exhibit patio
- stone canyon climb/overlook/slide
- stepping stones/log
- group swings

Stream Bed and Boardwalk
- meandering streambed/riparian environments
- arcing boardwalk
- interactive light totems, seating
- undulating savannah

Planetarium Hill
- spiraling planet walk
- tall grass prairie
- open planetarium
- projected imagery on building cylinder

Martin Luther King Jr Parkway

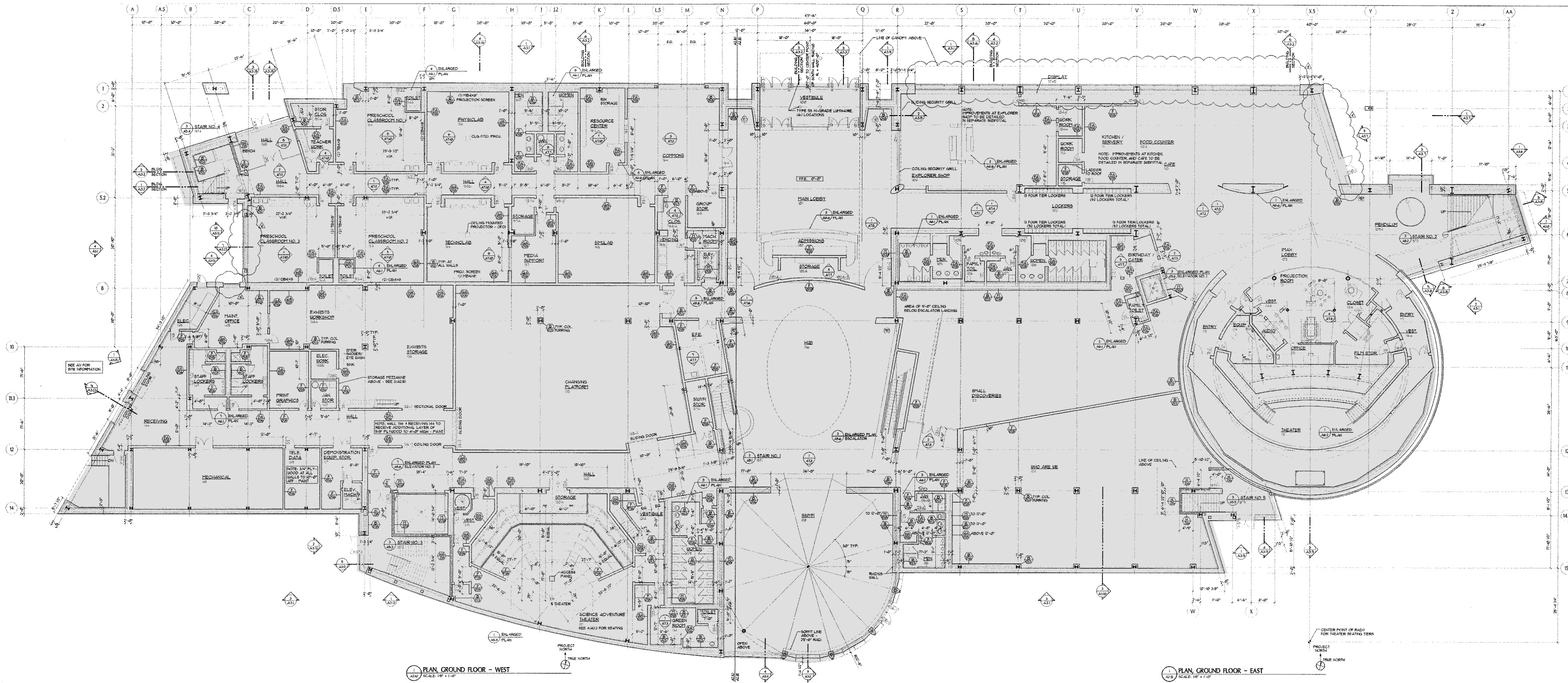


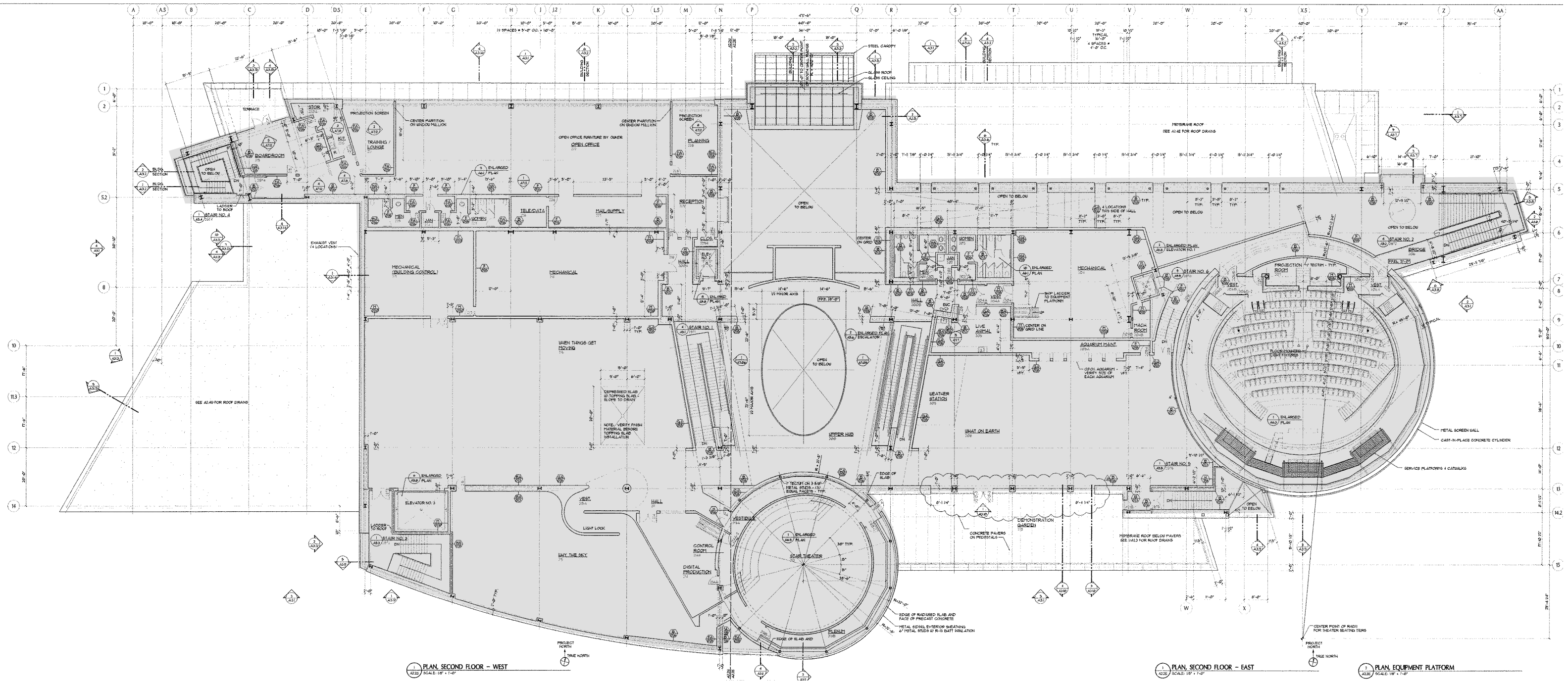


BUILDING CONCEPTS

02

Science Center of Iowa



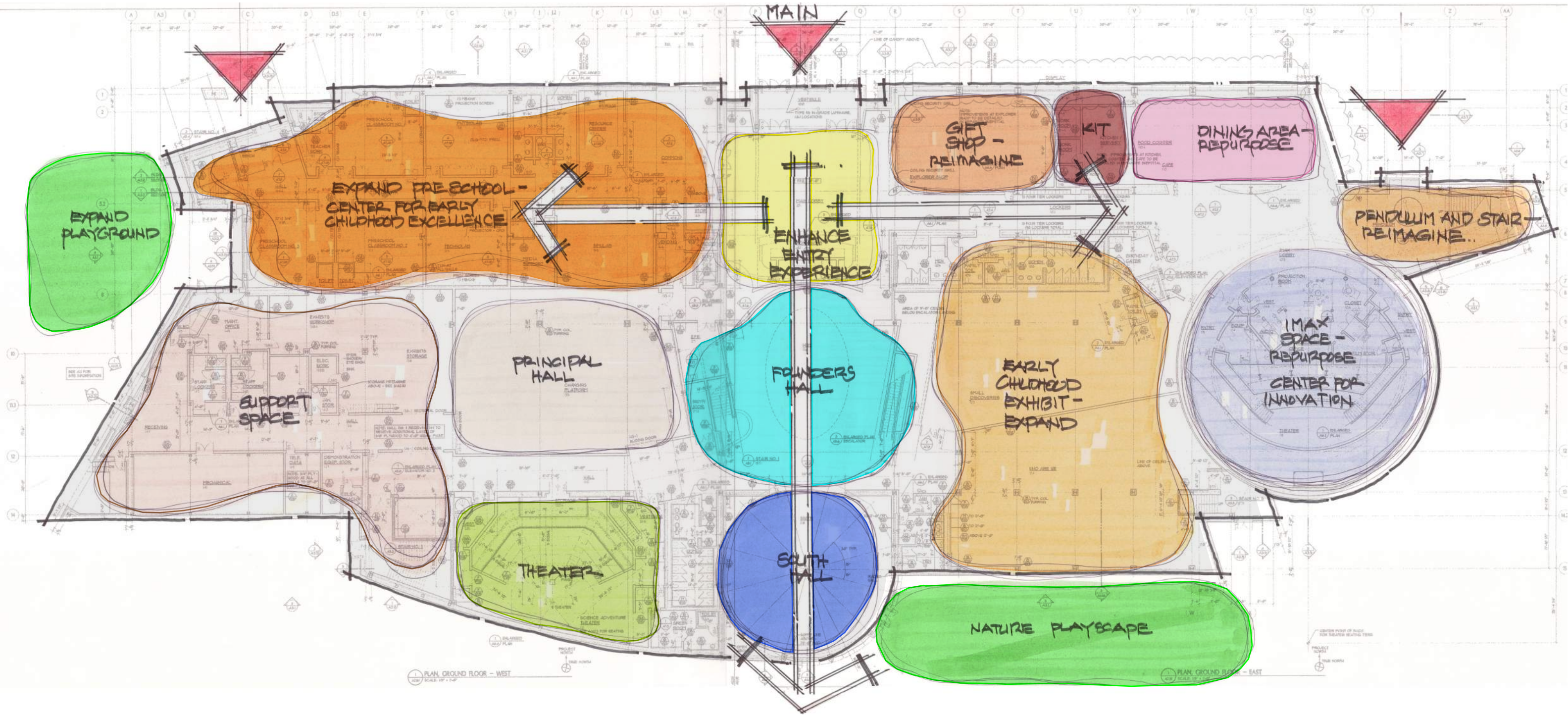


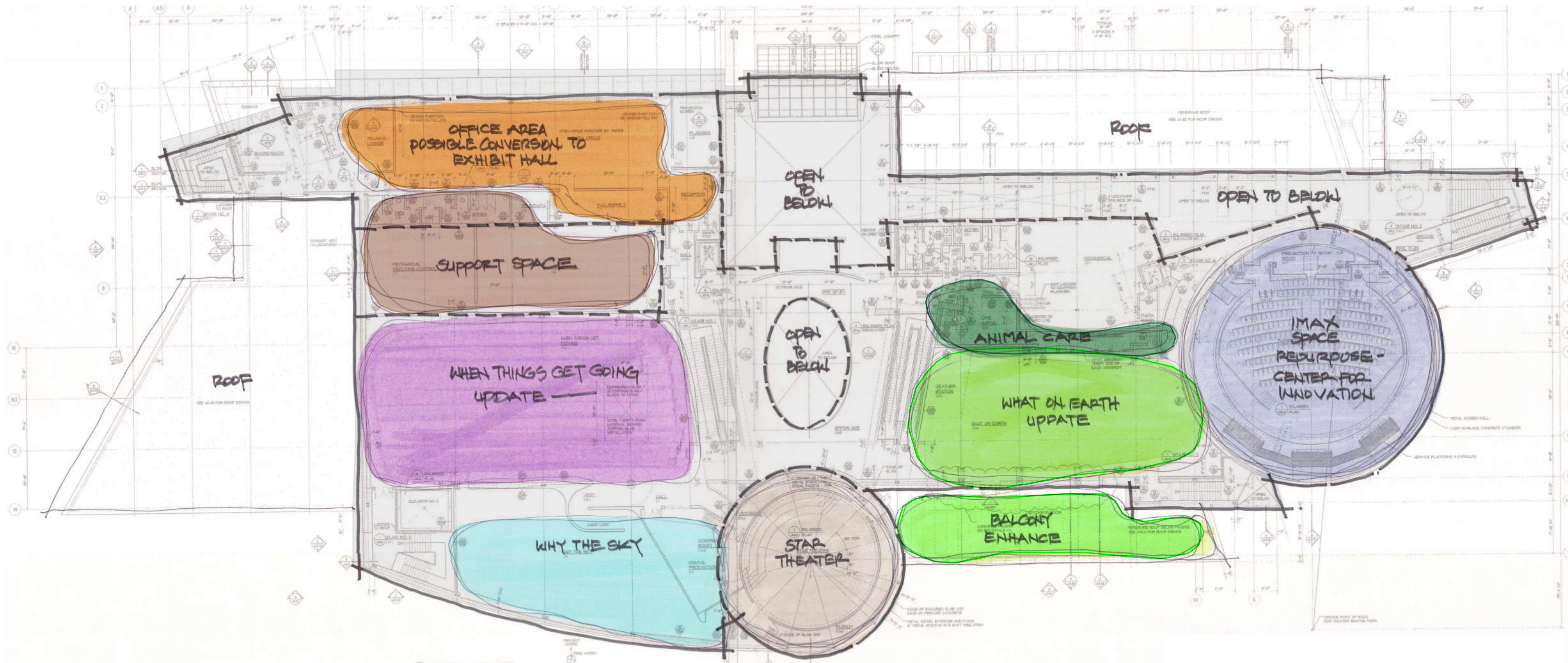
1 PLAN, SECOND FLOOR - WEST
SCALE: 1/8" = 1'-0"

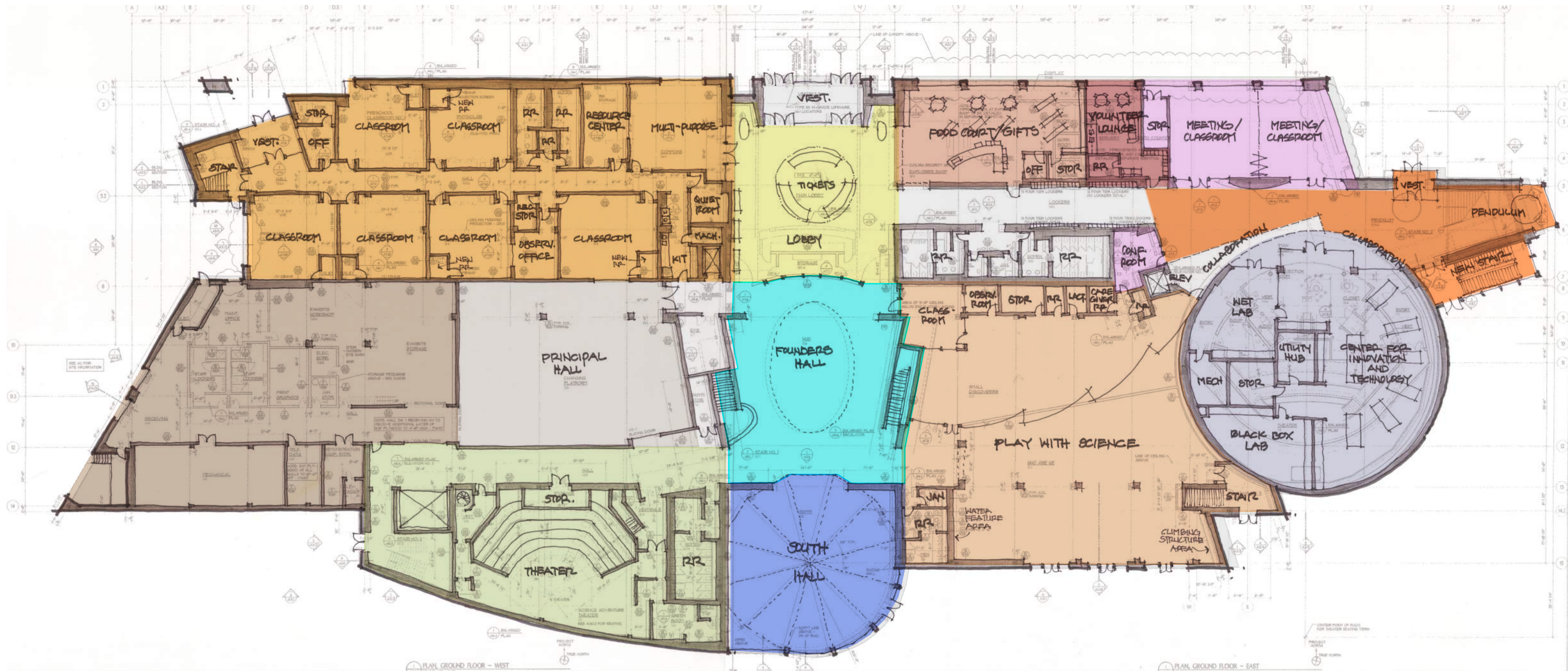
1 PLAN, SECOND FLOOR - EAST
SCALE: 1/8" = 1'-0"

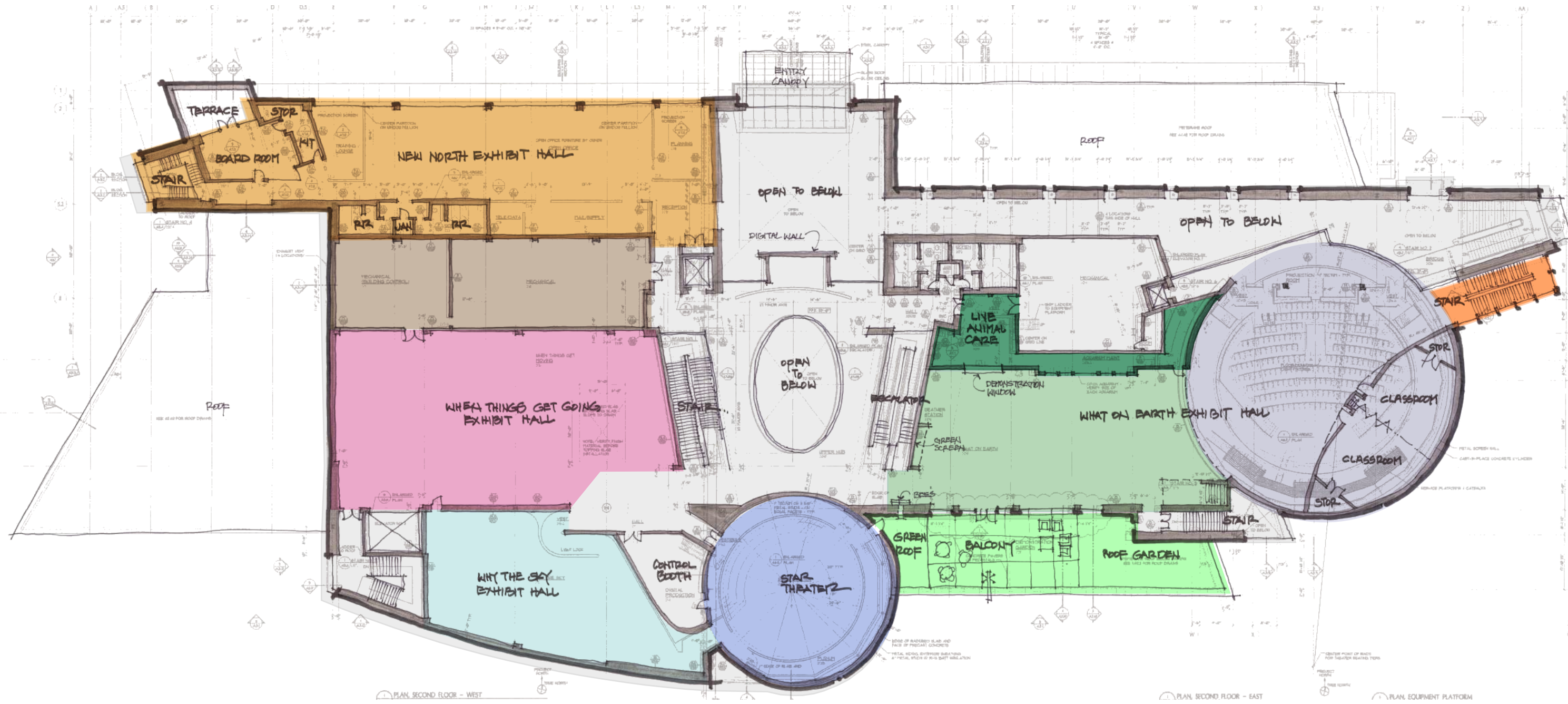
2 PLAN, EQUIPMENT PLATFORM
SCALE: 1/8" = 1'-0"

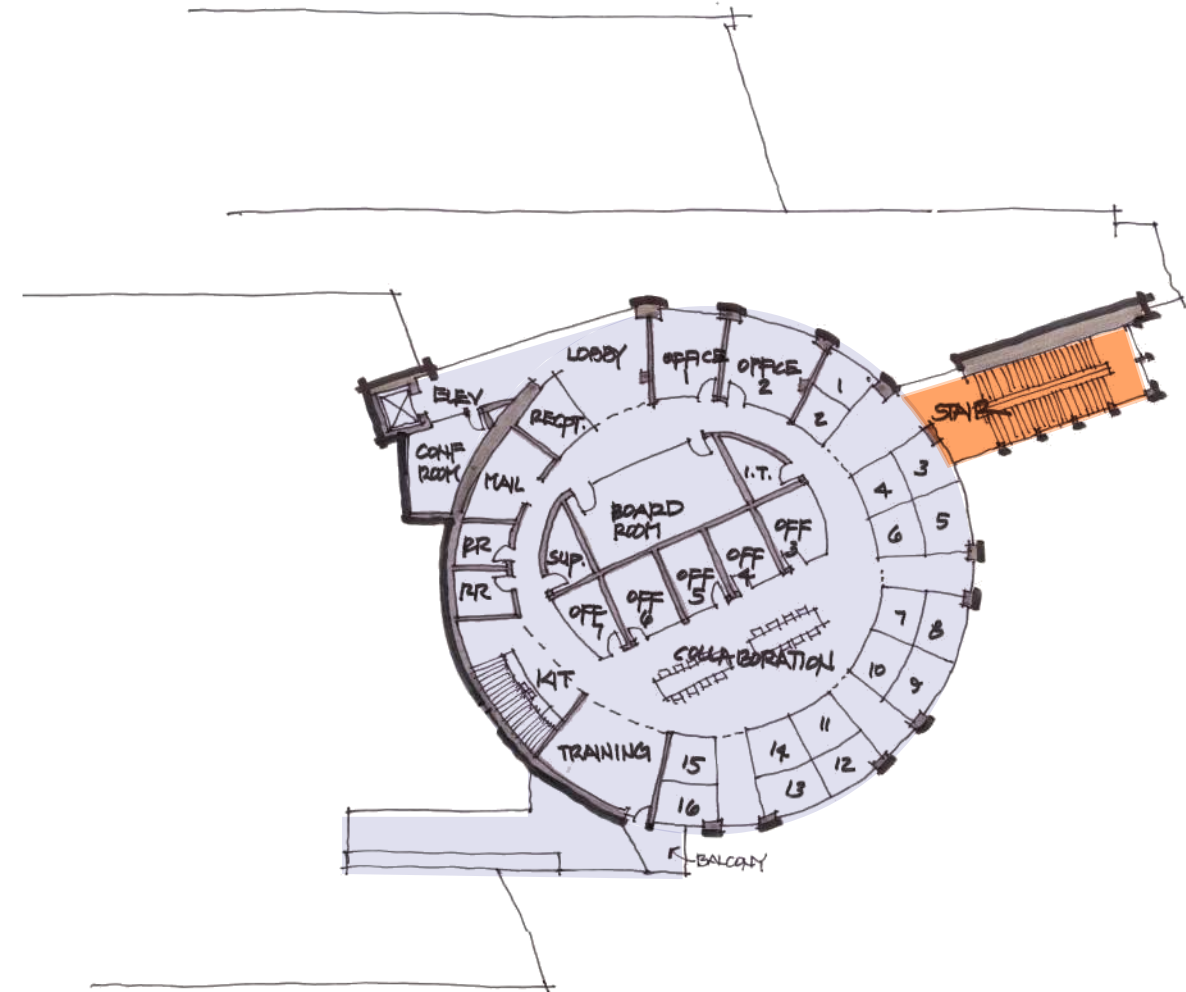
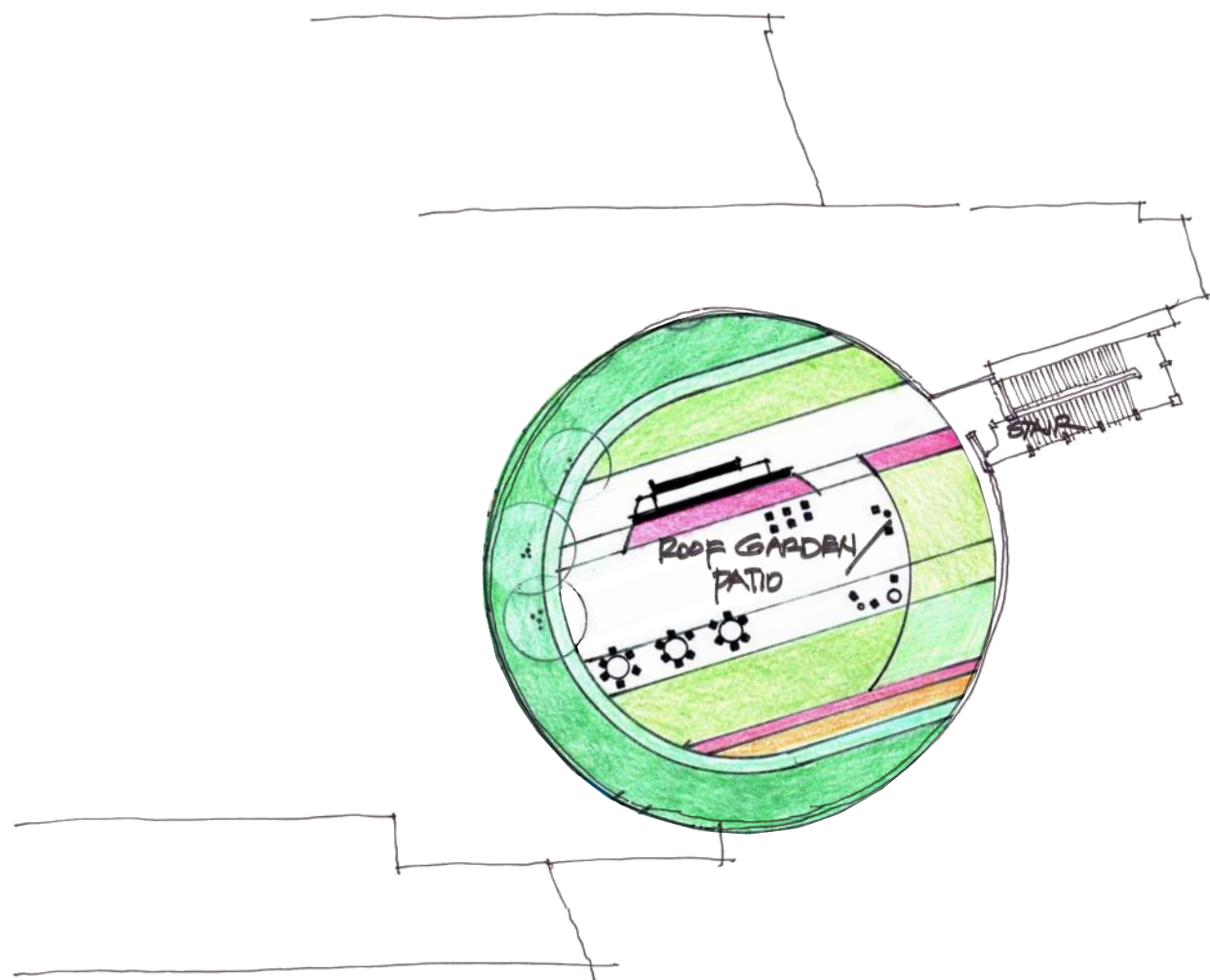










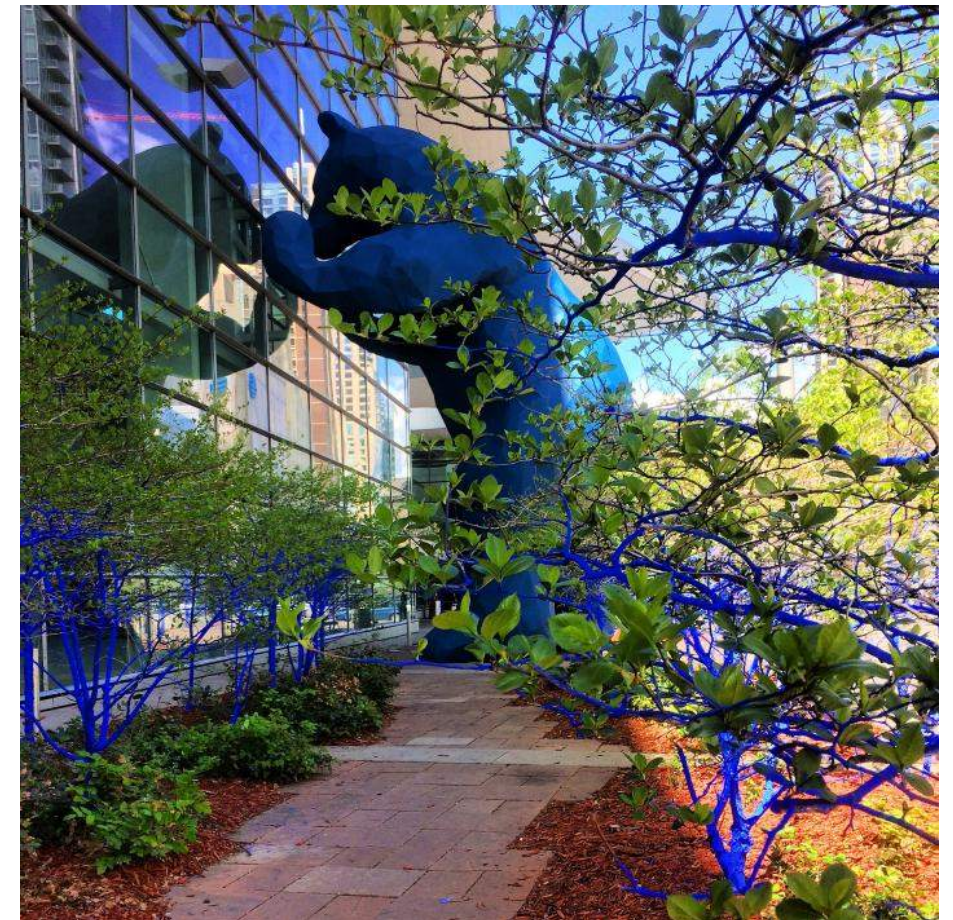


Reynolds
urban
Design



FEH DESIGN

ROOF LEVEL & THIRD LEVEL CONCEPTUAL PLANS



PUBLIC ART
ON BUILDINGS

CONTACT:

DENNIS SHARP, AIA, PRESIDENT

604 EAST GRAND AVENUE / DES MOINES, IOWA 50309

515 288 2000 / dennys@fehdesign.com

www.FEHDESIGN.com

DENNIS REYNOLDS, ASLA

112 10TH STREET #210 / DES MOINES, IOWA 50309

913 961 0999 / Dennis@ReynoldsUrbanDesign.com

www.ReynoldsUrbanDesign.com