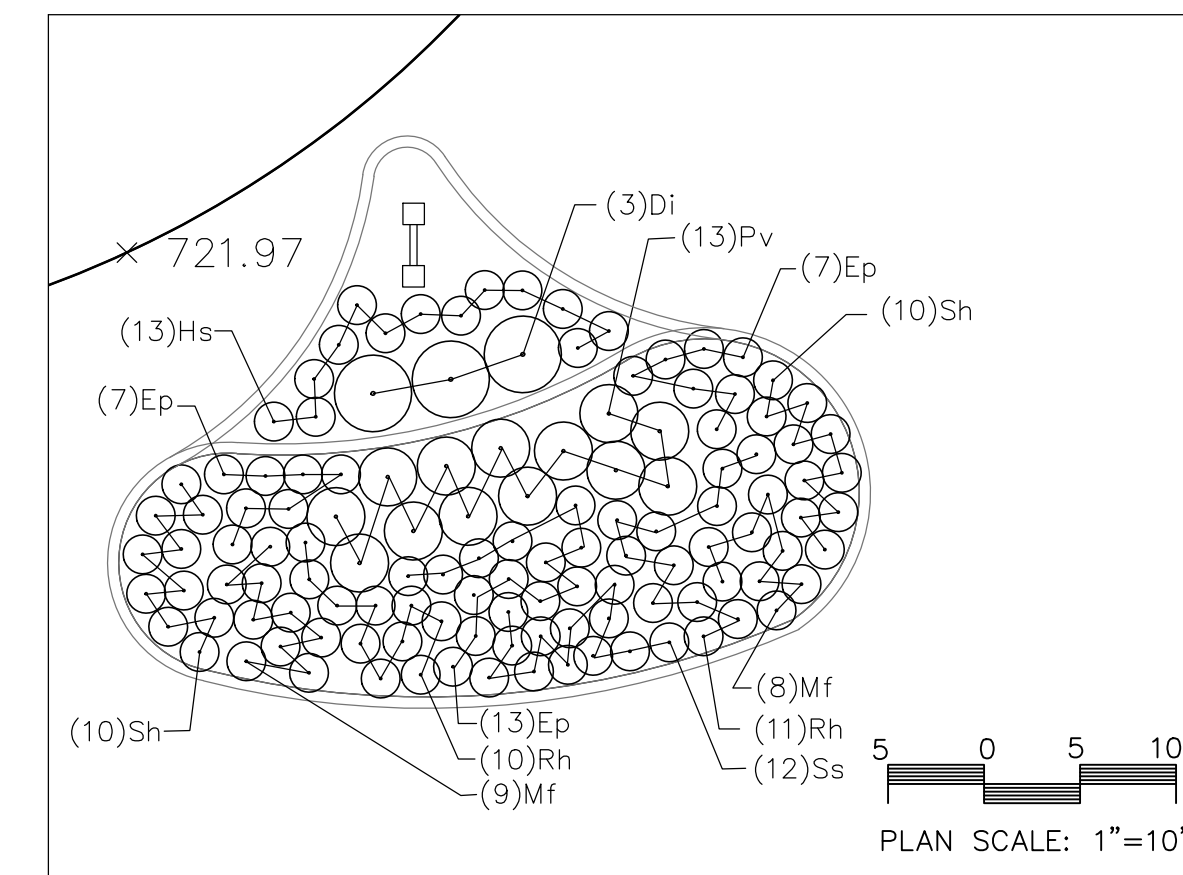


SITE NOTES

- The location of existing utilities, both underground and overhead are approximate only and have not been independently verified by the owner or its representatives. The contractor shall be responsible for determining the exact location of all existing utilities, whether shown on these plans or not, before commencing work, and shall be fully responsible for any and all damages which might be caused by the contractor's failure to exactly locate and preserve any and all utilities. CALL DIGGERS HOTLINE (800) 242-8511
- The underground locations of the Public Utilities were marked by representatives of those companies. The locations of the privately owned underground utilities were not marked.
- There may be more underground utility installations within the project area that are not shown.
- It shall be the contractor's responsibility to arrange for any necessary inspections by local government that may be required.
- Any and all parties utilizing vertical datum shall always check into at least two (2) benchmarks to avoid mistakes due to hydrant adjustments or transpositional errors. Failure to do so will be considered tantamount to gross negligence and subject the offending party to any damages resulting therefrom.

SITE NOTES

- ① SEE DETAIL (A) FOR LIGHT DUTY PAVEMENT SECTION
- ② SEE DETAIL (B) FOR CONCRETE PAVEMENT SECTION
- ③ SEE DETAIL (C) FOR 24" CURB AND GUTTER SECTION
- ④ SEE DETAIL (D) FOR SIDEWALK PAVING AND JOINTING
- ⑤ SEE DETAIL (E) FOR BOLLARD
- ⑥ FOOTING MUST ALLOW EXISTING STORM SEWER TO PASS
- ⑦ YELLOW PAINT ON CURB



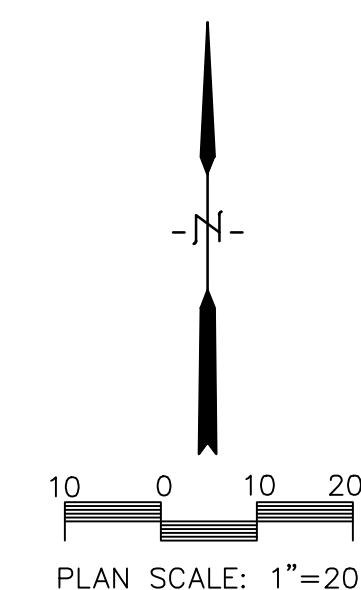
PLANTING PLAN

PLANT MATERIAL LIST-SCHEDULE

KEY	BOTANICAL NAME COMMON NAME	SIZE	QUANTITY
Di	Diervilla lonicera Dwarf Bush Honeysuckle	3 gal.	3
Ep	Echinacea purpurea Purple Coneflower	1 quart	27
Hs	Hemerocallis 'Stella d'Oro' Stella d'Oro Daylily	1 quart	13
Mf	Monarda fistulosa Wild Bergamot	1 quart	17
Pv	Panicum virgatum Switchgrass	1 quart	13
Rh	Rudbeckia hirta Black-eyed Susan	1 quart	21
Ss	Schizachyrium scoparium Little Bluestem	1 quart	12
Sh	Sporobolus heterolepis Prairie Dropseed	1 quart	20

BIOFILTER PLAN NOTES:

1. VERIFY UTILITY LOCATION BEFORE BEGINNING ANY WORK.
2. SEE BIOFILTER DETAIL ON UTILITY SHEET. BIOFILTER AND LANDSCAPE EDGING TO BE BELGIAN WALL AND WEDGE BLOCKS BY MIDWEST MANUFACTURING.
3. NEW LAWN AREAS AROUND BUILDINGS SHALL BE RESTORED WITH SOD. NEW AND DISTURBED LAWN AREAS SHALL BE RESTORED WITH SEED AND MULCH. REFER TO EROSION CONTROL PLAN.
4. MODIFICATIONS TO PLANT SPACING MAY BE ADJUSTED IN THE FIELD BY LANDSCAPE CONTRACTOR. LANDSCAPE ARCHITECT SHALL BE NOTIFIED OF ANY PROPOSED CHANGES TO PLANT MATERIALS OR DESIGN.
5. LANDSCAPE CONTRACTOR SHALL VISIT SITE, INSPECT EXISTING CONDITIONS AND REVIEW PROPOSED PLANTING AND RELATED WORK.



REVISIONS	BY

PARAGON ASSOCIATES
 Environmental Design & Consulting
 CIVIL ENGINEERING · LANDSCAPE ARCHITECTURE · SURVEYING
 632 COPELAND AVENUE · LA CROSSE, WI 54603
 Tel: 608.781.3110 Fax: 608.781.3197 Paragon-Assoc.biz

PREPARED FOR:
XXXX

ADVANCED FIBER PRODUCTS - ADDITION
2970 LUOYANG AVENUE
LA CROSSE, WISCONSIN
SITE PLAN

DRAWN
C.G.
 PROJECT No
15-086
 DATE
09/18/2015
 SCALE
1"=20'
 CAD FILE
15-086 Advanced Fiber Add 02
 SHEET
C2