

metronet

2701 COMMUNICATIONS WAY
EVANSVILLE, IN, 47715

Fullerton

1100 E WOODFIELD ROAD, SUITE 503
SCI LAUMBURG, ILLINOIS 60173
TEL: 847-908-8400
DESIGN FIRM NO. 184 008202-0006
www.fullerton-us.com

REV	DATE	DESCRIPTION	BY
A	08/25/23	ISSUED FOR REVIEW	NS

I HEREBY CERTIFY THAT THESE DRAWINGS WERE PREPARED BY ME OR UNDER MY DIRECT SUPERVISION AND CONTROL, AND TO THE BEST OF MY KNOWLEDGE AND BELIEF COMPLY WITH THE REQUIREMENTS OF ALL APPLICABLE CODES.

TASK NAME
WILC025-U-S2

TASK DESCRIPTION
FIBER OPTIC CONDUIT
PLACEMENT

PROJECT AREA
LACROSSE, WI, USA

SHEET SCALE
1" = 30'-0"

SHEET TITLE
DESIGN LAYOUT

GRID NUMBER

SHEET NUMBER
C-003

PROJECT# 2023-0119-0005

MATCHLINE - SHEET C-002

MATCHLINE - SHEET C-004

MATCHLINE - SHEET C-007

NOTE:
PRIOR TO CONSTRUCTION ALL
STREET LIGHT WIRING MUST BE
PROPERLY LOCATED.



- NOTE:
- PROPOSED CONDUIT SHALL AVOID EXISTING SEEPAGE BEDS
 - BURY AT 24" MIN. UNDER SOFT SURFACE-BURY AT 36" MIN. UNDER HARD SURFACE
 - MAINTAIN 1' FROM BACK OF SIDEWALK, WHEN APPLICABLE.

NOTE:
METRONET WILL MAINTAIN 5' CLEARANCE FROM EXISTING INLETS, MANHOLES, VALVES, AND FIRE HYDRANTS & 7.5' CLEARANCE FROM MANHOLES AND CATCH BASINS.

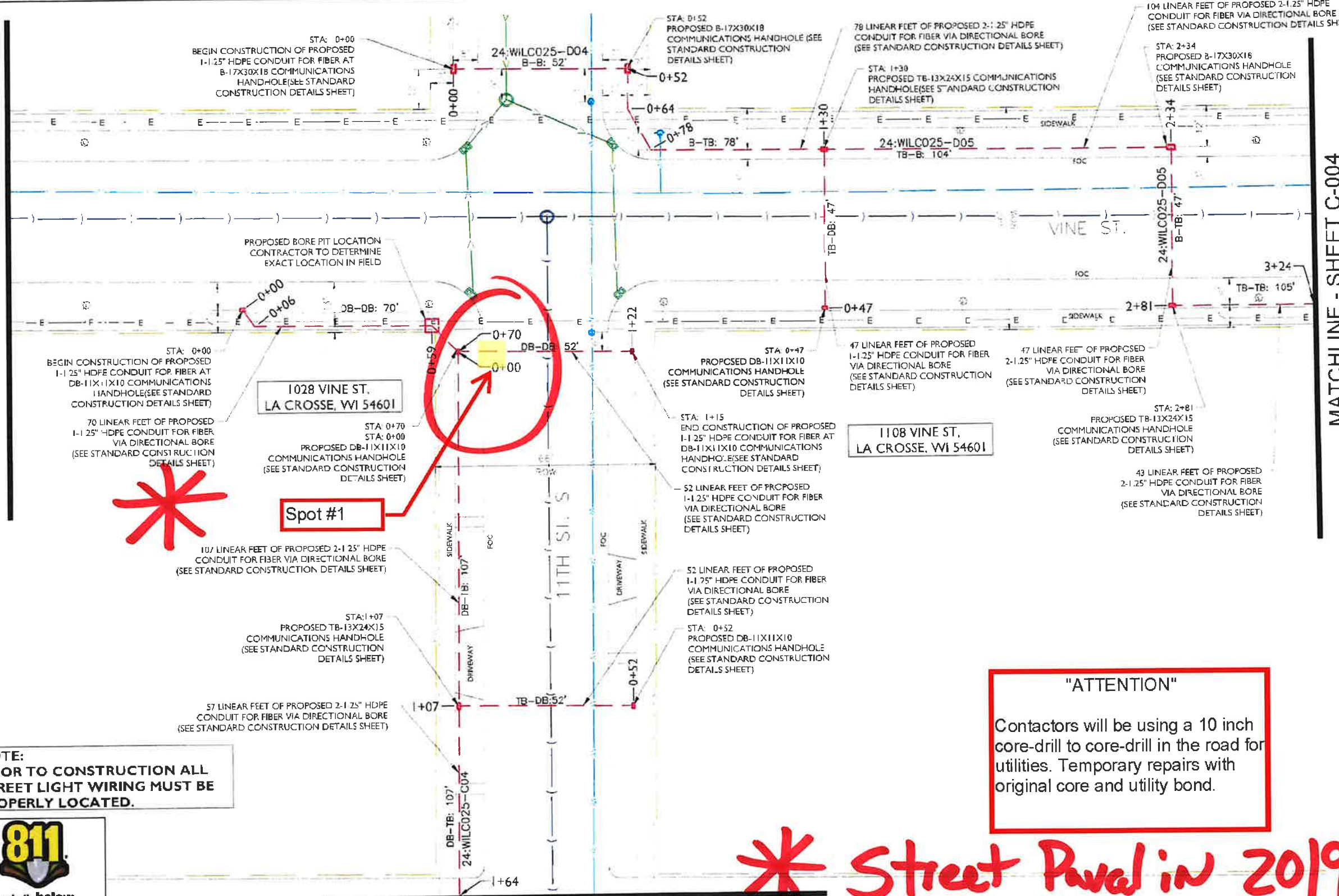
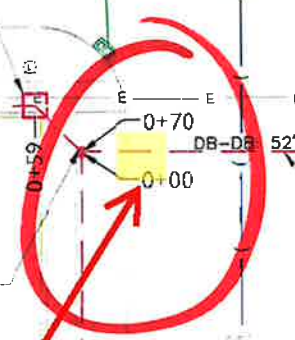


"ATTENTION"
Contractors will be using a 10 inch core-drill to core-drill in the road for utilities. Temporary repairs with original core and utility bond.

*** Street Paved in 2019**



Spot #1



MATCHLINE - SHEET C-003



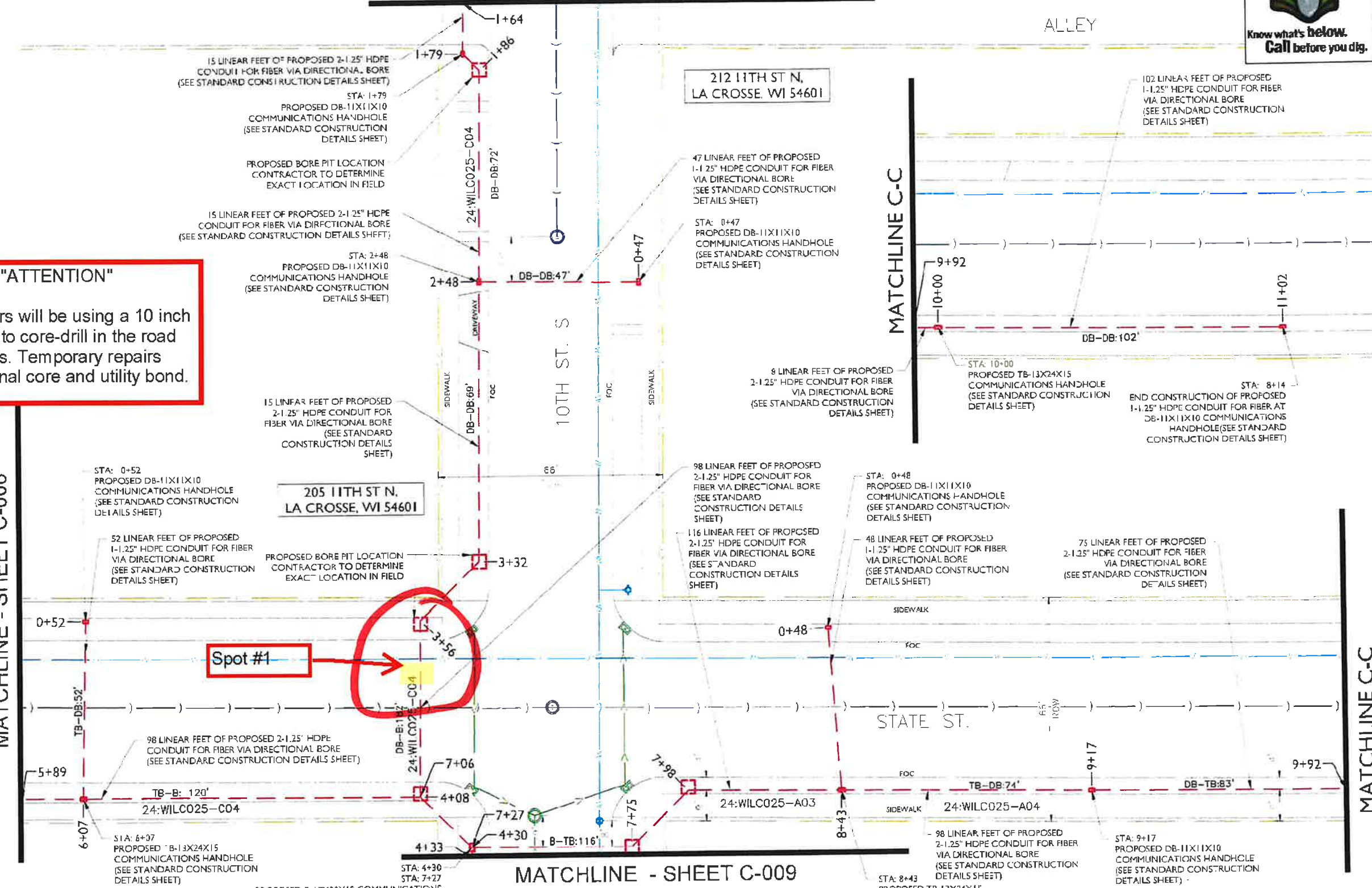
metronet
3701 COMMUNICATIONS WAY
EVANSVILLE, IN, 47715

Fullerton
1100 E WOODFIELD ROAD, SUITE 500
SCHAUMBURG, ILLINOIS 60173
TEL: 847-908-8400
DESIGN FIRM NO 18-008202-0006
www.fullerton-us.com

"ATTENTION"
Contractors will be using a 10 inch core-drill to core-drill in the road for utilities. Temporary repairs with original core and utility bond.

MATCHLINE - SHEET C-006

MATCHLINE C-C



205 11TH ST N,
LA CROSSE, WI 54601

212 11TH ST N,
LA CROSSE, WI 54601

Spot #1

- NOTE:
- PROPOSED CONDUIT SHALL AVOID EXISTING SEEPAGE BEDS
 - BURY AT 24" MIN. UNDER SOFT SURFACE-BURY AT 36" MIN. UNDER HARD SURFACE
 - MAINTAIN 1' FROM BACK OF SIDEWALK, WHEN APPLICABLE.

NOTE:
METRONET WILL MAINTAIN 5' CLEARANCE FROM EXISTING INLETS, MANHOLES, VALVES, AND FIRE HYDRANTS & 7.5' CLEARANCE FROM MANHOLES AND CATCH BASINS.

REV	DATE	DESCRIPTION	BY
A	09/25/23	ISSUED FOR REVIEW	MS

I HEREBY CERTIFY THAT THESE DRAWINGS WERE PREPARED BY ME OR UNDER MY DIRECT SUPERVISION AND CONTROL, AND TO THE BEST OF MY KNOWLEDGE AND BELIEF COMPLY WITH THE REQUIREMENTS OF ALL APPLICABLE CODES.

TASK NAME
WILC025-U-S2

TASK DESCRIPTION
FIBER OPTIC CONDUIT PLACEMENT

PROJECT AREA
LACROSSE, WI, USA

SHEET SCALE
1" = 30'-0"

SHEET TITLE
DESIGN LAYOUT

GRID NUMBER

SHEET NUMBER
C-007



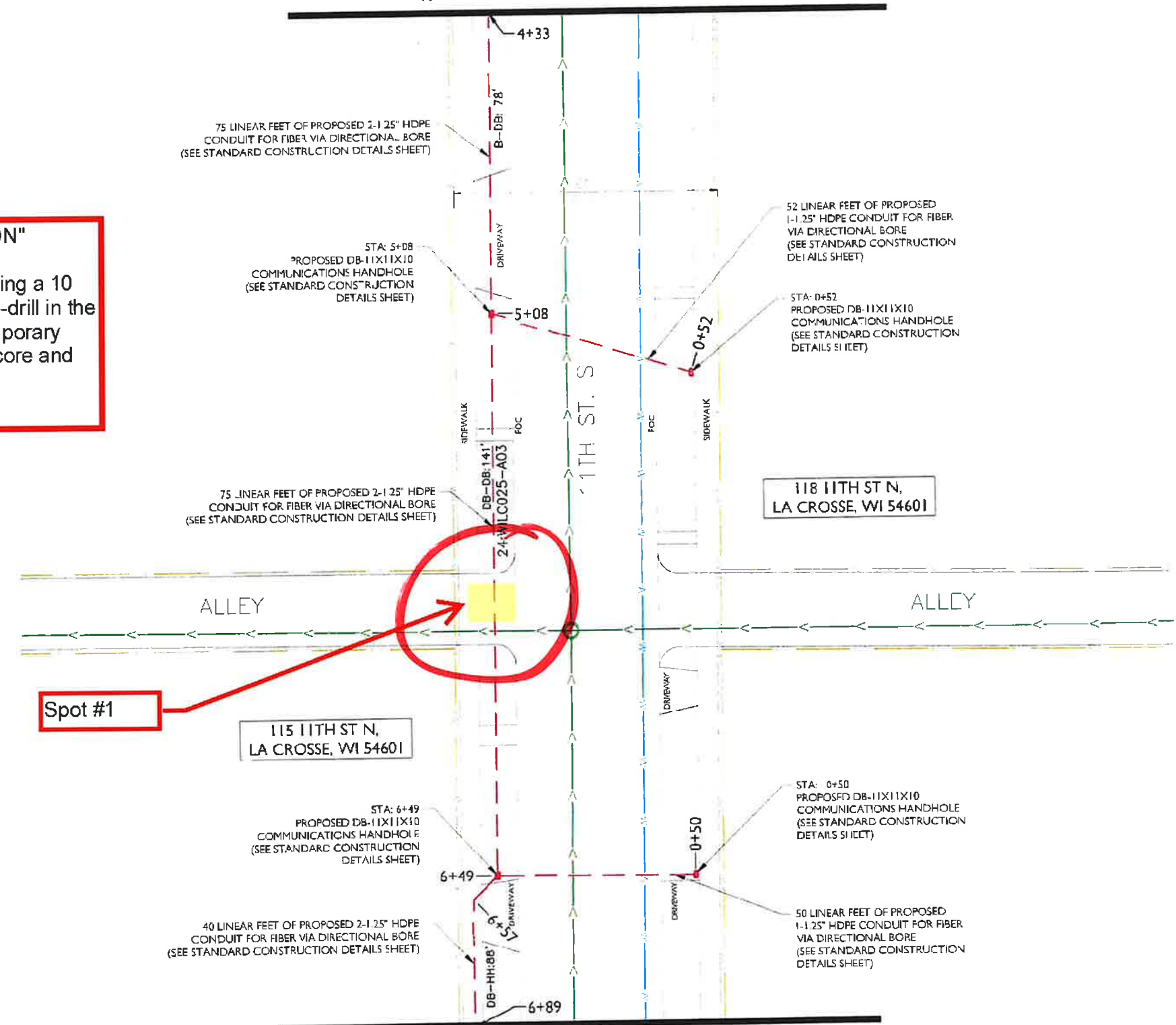
MATCHLINE - SHEET C-005



metronet
3701 COMMUNICATIONS WAY
EVANSVILLE, IN, 47715

Fullerton
1100 E. WOODFIELD ROAD, SUITE 500
SCHAUMBURG, ILLINOIS 60173
TEL: 847-908-8400
DESIGN FIRM NO. 184 008202-0006
www.fullerton-us.com

"ATTENTION"
Contractors will be using a 10 inch core-drill to core-drill in the road for utilities. Temporary repairs with original core and utility bond.



118 11TH ST N,
LA CROSSE, WI 54601

115 11TH ST N,
LA CROSSE, WI 54601

MATCHLINE - SHEET C-012

- NOTE:
- PROPOSED CONDUIT SHALL AVOID EXISTING SEEPAGE BEDS
 - BURY AT 24" MIN. UNDER SOFT SURFACE-BURY AT 36" MIN. UNDER HARD SURFACE
 - MAINTAIN 1' FROM BACK OF SIDEWALK, WHEN APPLICABLE.

NOTE:
METRONET WILL MAINTAIN 5' CLEARANCE FROM EXISTING INLETS, MANHOLES, VALVES, AND FIRE HYDRANTS & 7.5' CLEARANCE FROM MANHOLES AND CATCH BASINS.



REV	DATE	DESCRIPTION	BY
A	08/25/23	ISSUED FOR REVIEW	NS

I HEREBY CERTIFY THAT THESE DRAWINGS WERE PREPARED BY ME OR UNDER MY DIRECT SUPERVISION AND CONTROL, AND TO THE BEST OF MY KNOWLEDGE AND BELIEF COMPLY WITH THE REQUIREMENTS OF ALL APPLICABLE CODES

TASK NAME
WILC025-U-S2

TASK DESCRIPTION
FIBER OPTIC CONDUIT PLACEMENT

PROJECT AREA
LACROSSE, WI, USA

SHEET SCALE
1" = 30'-0"

SHEET TITLE
DESIGN LAYOUT

GRID NUMBER

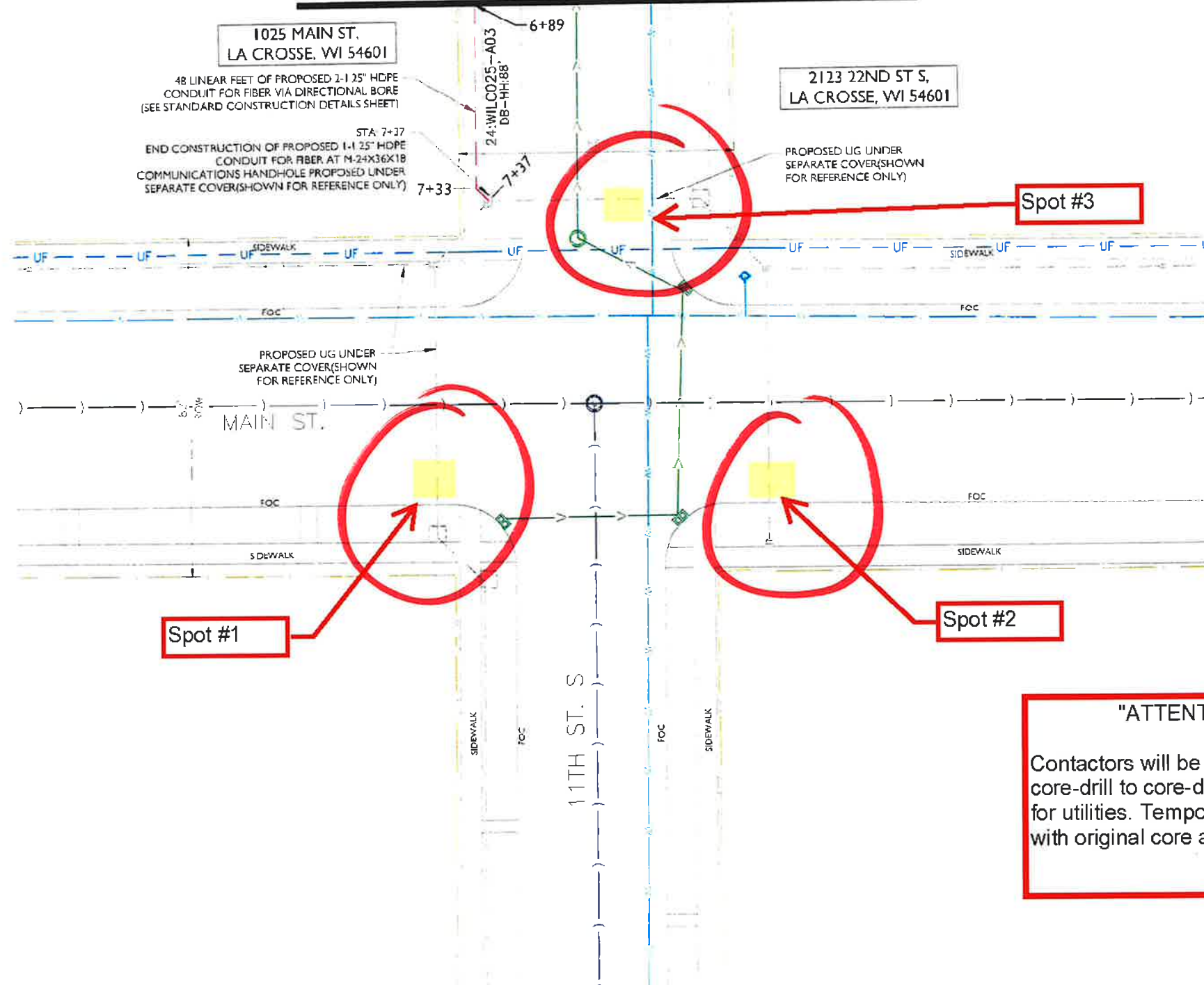
SHEET NUMBER
C-009

MATCHLINE - SHEET C-009



metronet
3701 COMMUNICATIONS WAY
EVANSVILLE, IN, 47715

Fullerton
1100 E WOODFIELD ROAD, SUITE 50C
SCHALMBURG, ILLINOIS 60173
TEL: 847-908-8400
DESIGN FIRM NO 184 008202-0006
www.fullerton-us.com



1025 MAIN ST.
LA CROSSE, WI 54601

2123 22ND ST S,
LA CROSSE, WI 54601

48 LINEAR FEET OF PROPOSED 2-1 25" HDPE CONDUIT FOR FIBER VIA DIRECTIONAL BORE (SEE STANDARD CONSTRUCTION DETAILS SHEET)

END CONSTRUCTION OF PROPOSED 1-1 25" HDPE CONDUIT FOR FIBER AT M-24X36X18 COMMUNICATIONS HANDHOLE PROPOSED UNDER SEPARATE COVER(SHOWN FOR REFERENCE ONLY)

PROPOSED UG UNDER SEPARATE COVER(SHOWN FOR REFERENCE ONLY)

Spot #3

PROPOSED UG UNDER SEPARATE COVER(SHOWN FOR REFERENCE ONLY)

Spot #1

Spot #2

"ATTENTION"
Contractors will be using a 10 inch core-drill to core-drill in the road for utilities. Temporary repairs with original core and utility bond.

REV	DATE	DESCRIPTION	BY
A	09/25/23	ISSUED FOR REVIEW	NS

I HEREBY CERTIFY THAT THESE DRAWINGS WERE PREPARED BY ME OR UNDER MY DIRECT SUPERVISION AND CONTROL, AND TO THE BEST OF MY KNOWLEDGE AND BELIEF COMPLY WITH THE REQUIREMENTS OF ALL APPLICABLE CODES

TASK NAME
WILC025-U-S2

TASK DESCRIPTION
FIBER OPTIC CONDUIT PLACEMENT

PROJECT AREA
LACROSSE, WI, USA

SHEET SCALE
1" = 30'-0"

SHEET TITLE
DESIGN LAYOUT

GRID NUMBER

SHEET NUMBER
C-012

- NOTE:
- PROPOSED CONDUIT SHALL AVOID EXISTING SEEPAGE BEDS
 - BURY AT 24" MIN. UNDER SOFT SURFACE-BURY AT 36" MIN. UNDER HARD SURFACE
 - MAINTAIN 1' FROM BACK OF SIDEWALK, WHEN APPLICABLE.

NOTE:
METRONET WILL MAINTAIN 5' CLEARANCE FROM EXISTING INLETS, MANHOLES, VALVES, AND FIRE HYDRANTS & 7.5' CLEARANCE FROM MANHOLES AND CATCH BASINS.

