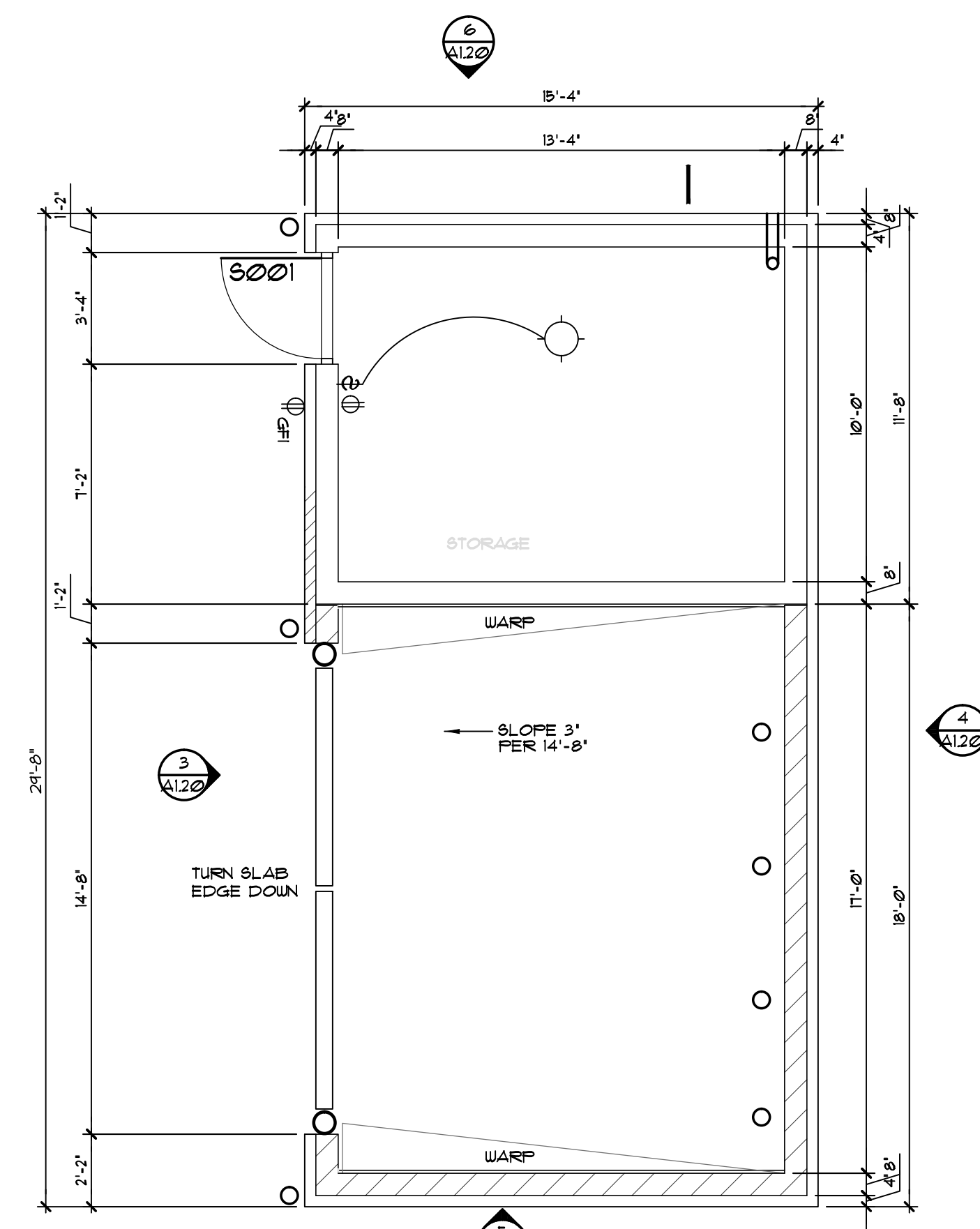
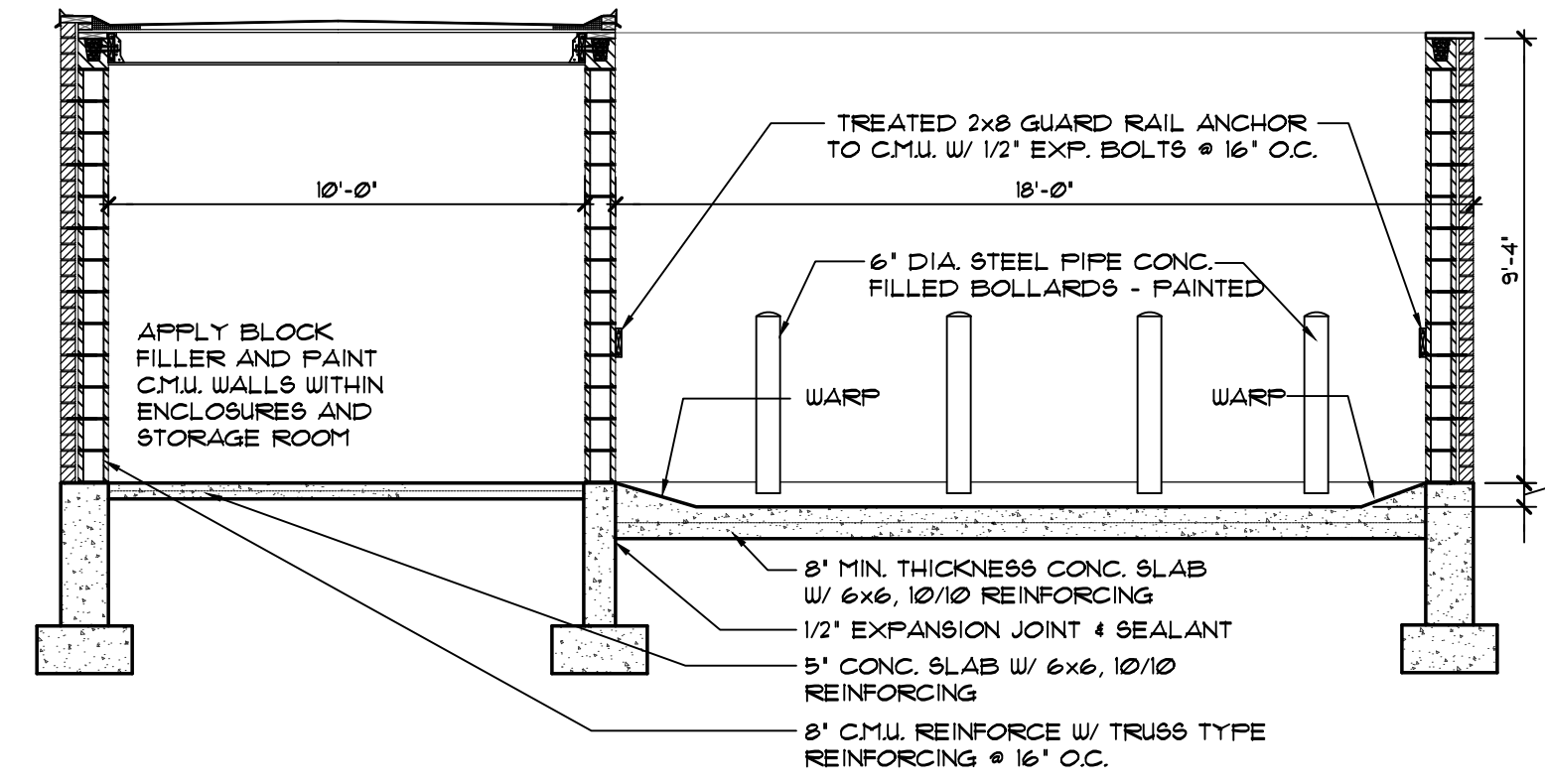
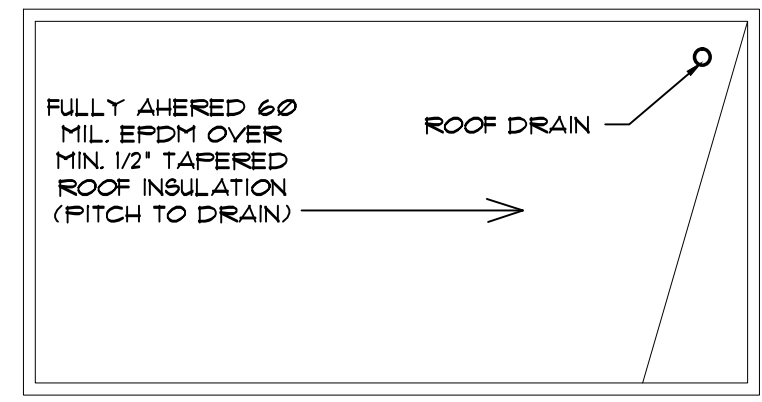




GARY BRINK & ASSOCIATES  
ARCHITECTS  
7780 ELMWOOD AVE. STE. 204  
MIDDLETON, WI 53562  
608-829-1750  
608-829-3056 (FAX)



1 TRASH ENCLOSURE & STORAGE BUILDING PLAN  
SCALE: 1/4"=1'-0"



2 SECTION THRU TRASH ENCLOSURE & STORAGE BUILDING  
SCALE: 1/4"=1'-0"

ROOF ASSEMBLY:  
2x8 RAFTERS @ 16' O.C. W/  
3" T&G PLYWOOD W/  
TAPERED ROOF  
INSULATION & 60 MIL  
FULLY ADHERED EPDM

TREATED 2x8 GUARD RAIL ANCHOR  
TO CMU W/ 1/2" EXP. BOLTS @ 16' O.C.

6" DIA STEEL PIPE CONC.  
FILLED BOLLARDS - PAINTED

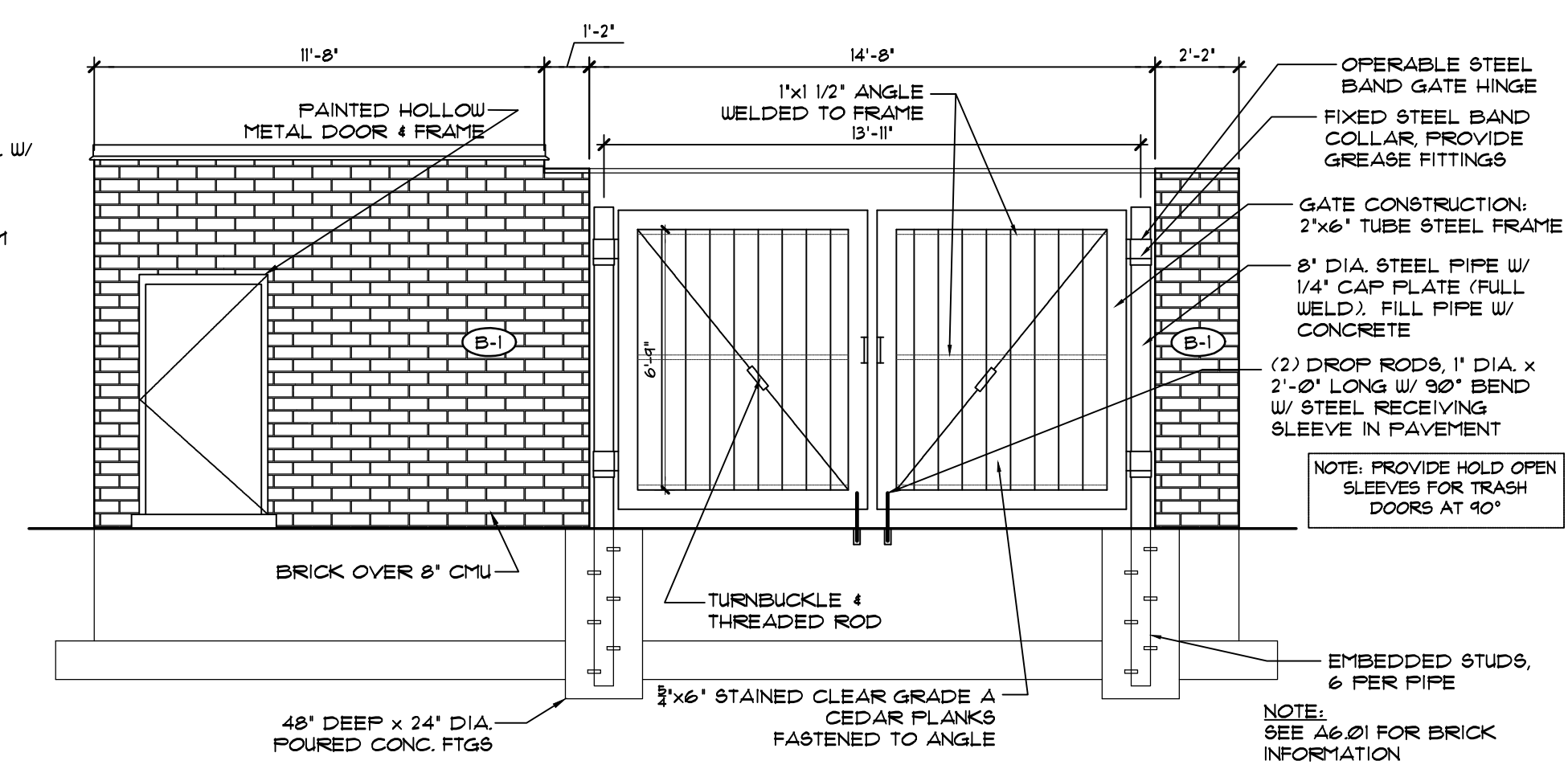
WARP

8" MIN. THICKNESS CONC. SLAB  
W/ 6x6, 10/10 REINFORCING

1/2" EXPANSION JOINT & SEALANT

5" CONC. SLAB W/ 6x6, 10/10  
REINFORCING

8" CMU REINFORCE W/ TRUSS TYPE  
REINFORCING @ 16' O.C.



3 TRASH ENCLOSURE & STORAGE BUILDING - SOUTH ELEVATION  
SCALE: 1/4"=1'-0"

1"x1 1/2" ANGLE  
WELDED TO FRAME  
3'-11"

OFFERABLE STEEL  
BAND GATE HINGE

FIXED STEEL BAND  
COLLAR, PROVIDE  
GREASE FITTINGS

GATE CONSTRUCTION:  
2"x6" TUBE STEEL FRAME

8" DIA. STEEL PIPE W/  
1/4" CAP PLATE (FULL  
WELD). FILL PIPE W/  
CONCRETE

(2) DROP RODS, 1" DIA. x  
2'-0" LONG W/ 90° BEND  
W/ STEEL RECEIVING  
SLEEVE IN PAVEMENT

NOTE: PROVIDE HOLD OPEN  
SLEEVES FOR TRASH  
DOORS AT 90°

TURNBUCKLE &  
THREADED ROD

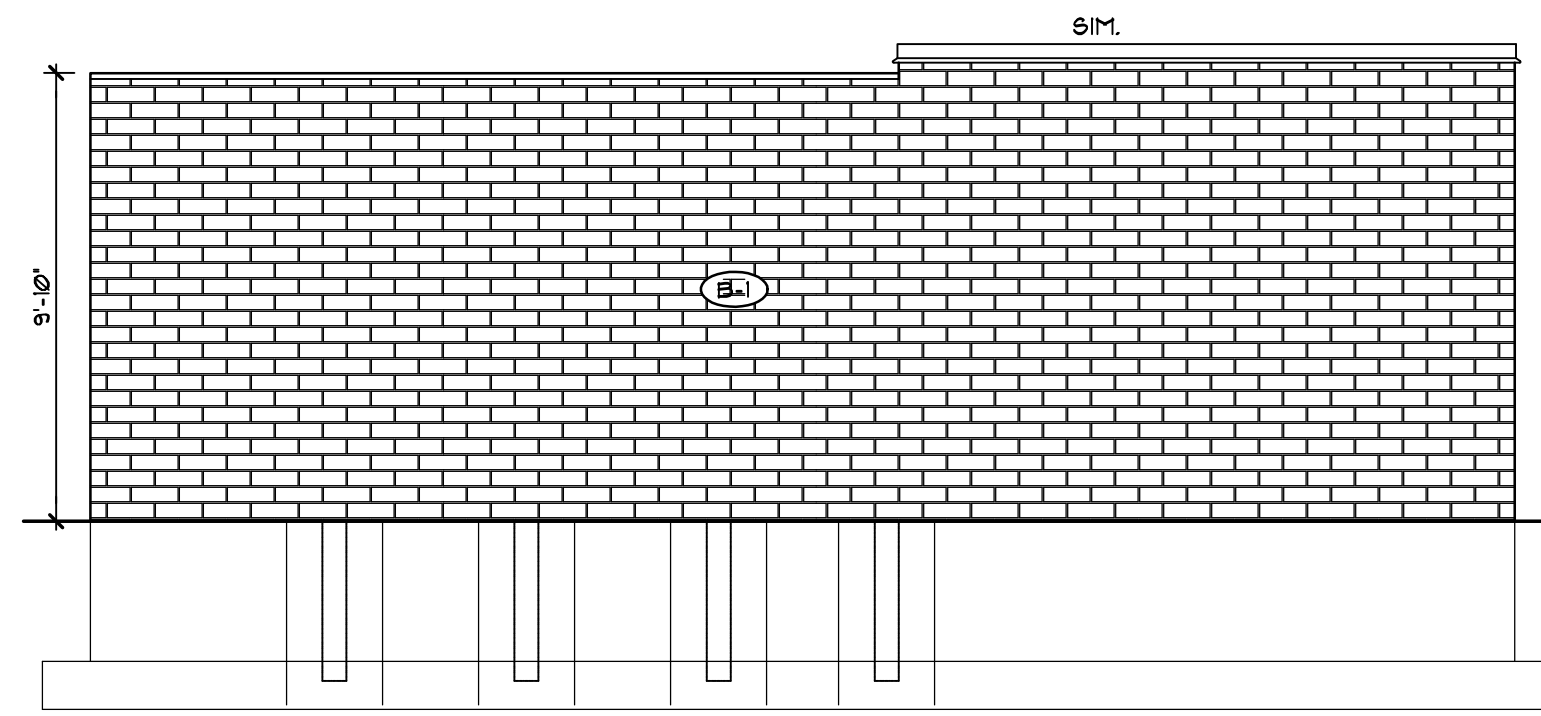
EMBEDDED STUDS,  
6 PER PIPE

NOTE:  
SEE A6-01 FOR BRICK  
INFORMATION

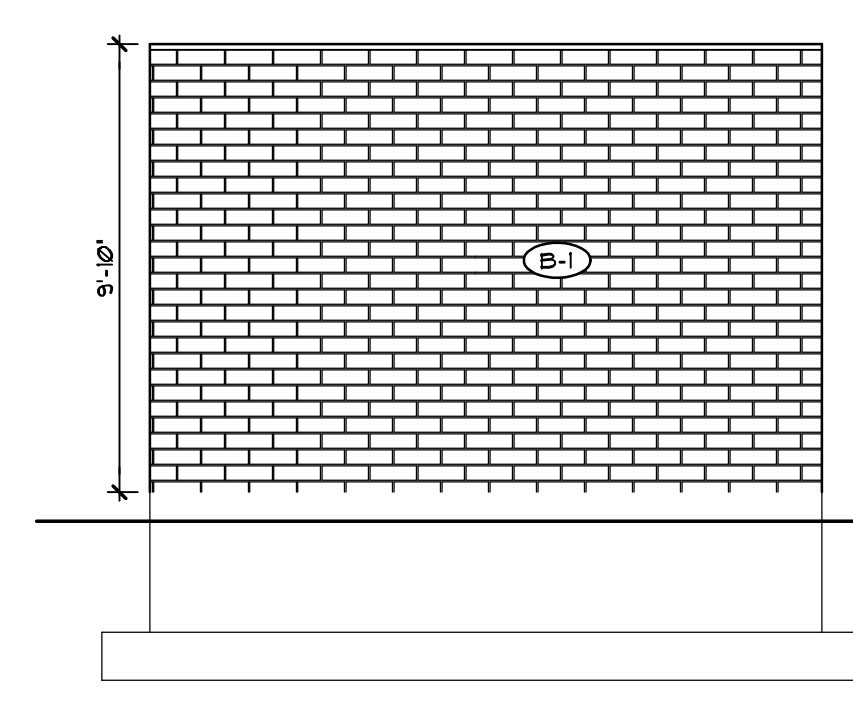
3/4"x6" STAINED CLEAR GRADE A  
CEDAR PLANKS  
FASTENED TO ANGLE

48" DEEP x 24" DIA.  
POURED CONC. FTGS

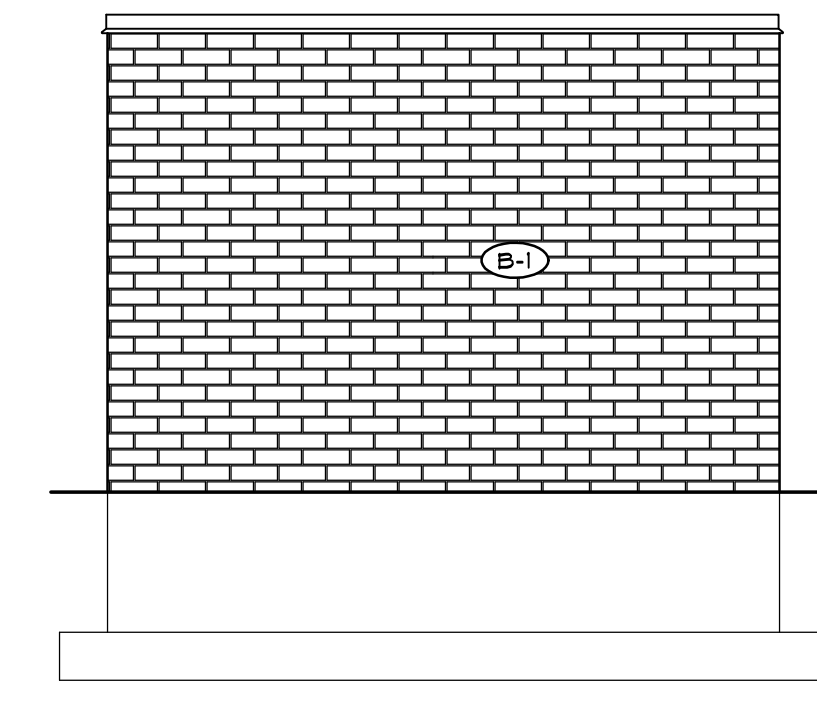
BRICK OVER 8" CMU



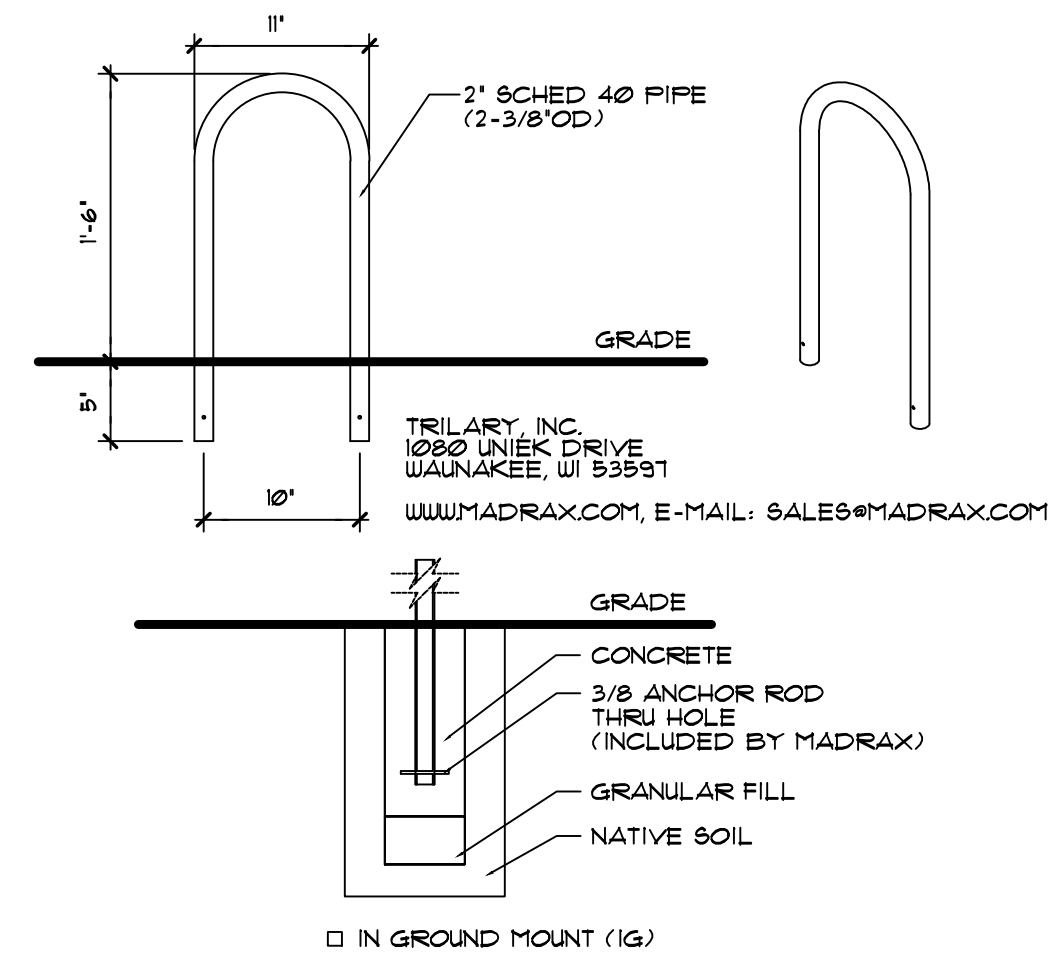
4 TRASH ENCLOSURE & STORAGE BUILDING - NORTH ELEVATION  
SCALE: 1/4"=1'-0"



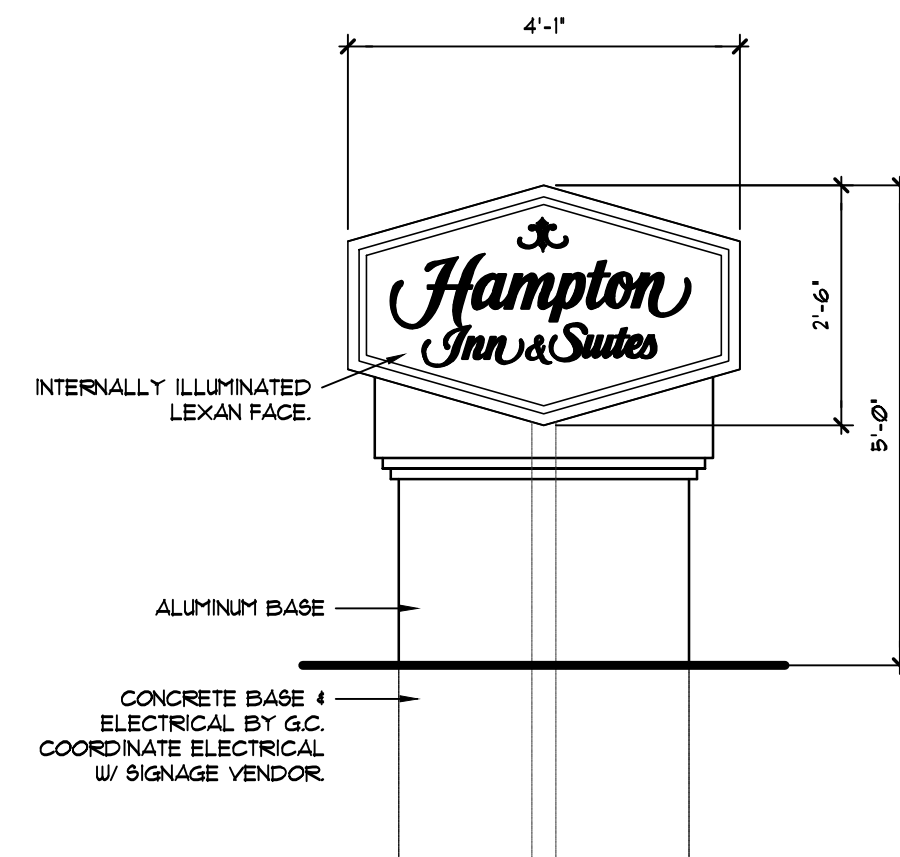
5 TRASH ENCLOSURE  
EAST ELEVATION  
SCALE: 1/4"=1'-0"



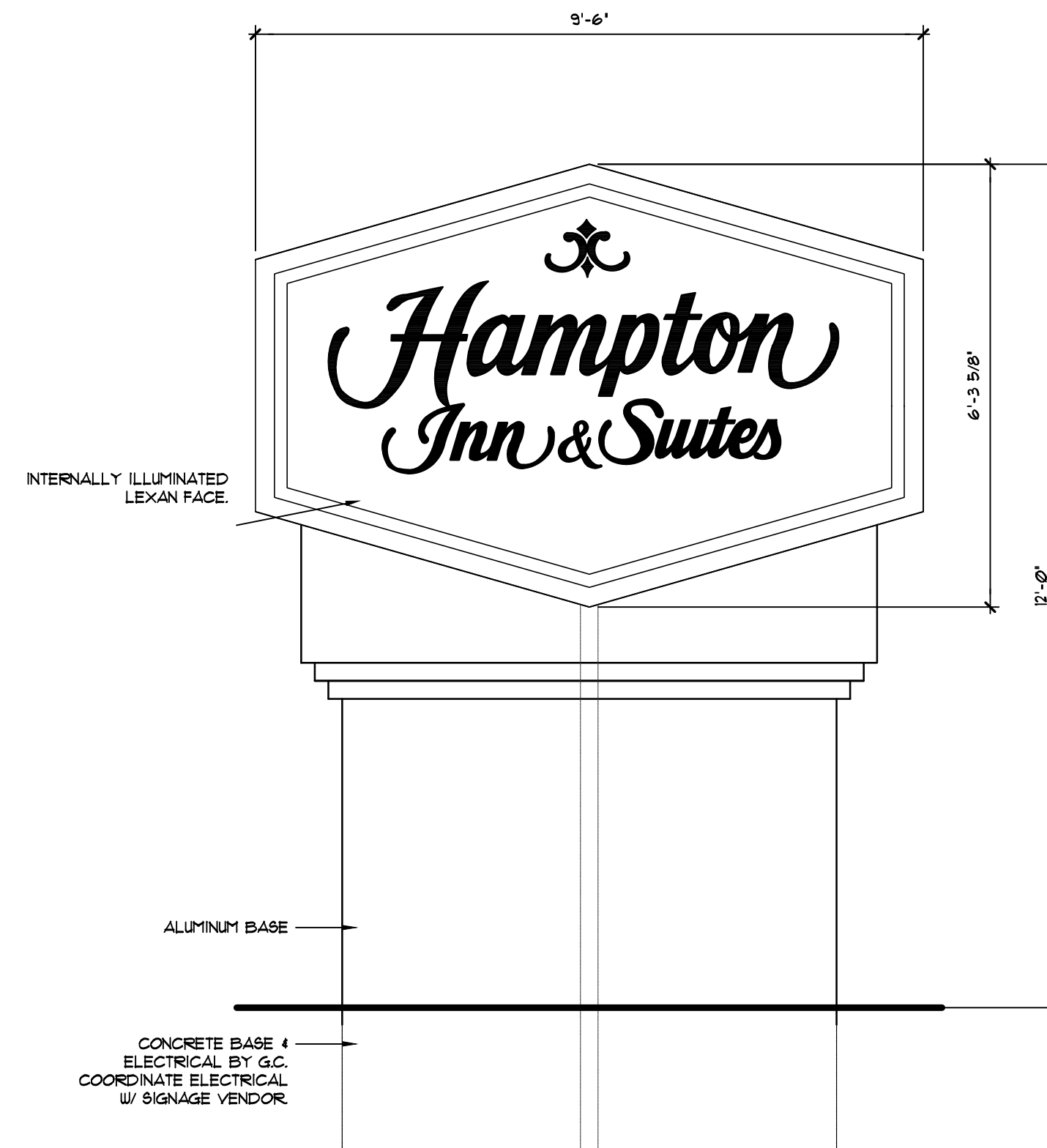
6 STORAGE BUILDING  
WEST ELEVATION  
SCALE: 1/4"=1'-0"



20 DETAIL - TYPICAL BIKE RACK  
SCALE: NONE



16 DIRECTIONAL SIGN  
SCALE: 1/2"=1'-0"



16 D/F HIS-60 MONUMENT SIGN  
SCALE: 1/2"=1'-0"

PROJECT: **Hampton Inn & Suites**  
NORTH-EAST CORNER OF NORTH 3rd STREET AND La CROSSE STREET  
La CROSSE, WISCONSIN 54603  
CLIENT: **La CROSSE HOTEL GROUP, LLC**  
115 E. MAIN STREET SUITE 210  
MADISON, WI 53703

©2014 GARY BRINK & ASSOC.  
Any duplication, reproduction, or use by any  
other party is prohibited unless prior written  
authorization is received from GARY BRINK &  
ASSOC.

PROJECT: 201354  
DRAWN BY: MB  
DATE:  
SCALE: AS NOTED