

# Green Bay Street Bicycle Accommodations

Jackson Overby

Engineer

608-789-7365

&

Jenna Dinkel

Associate Planner

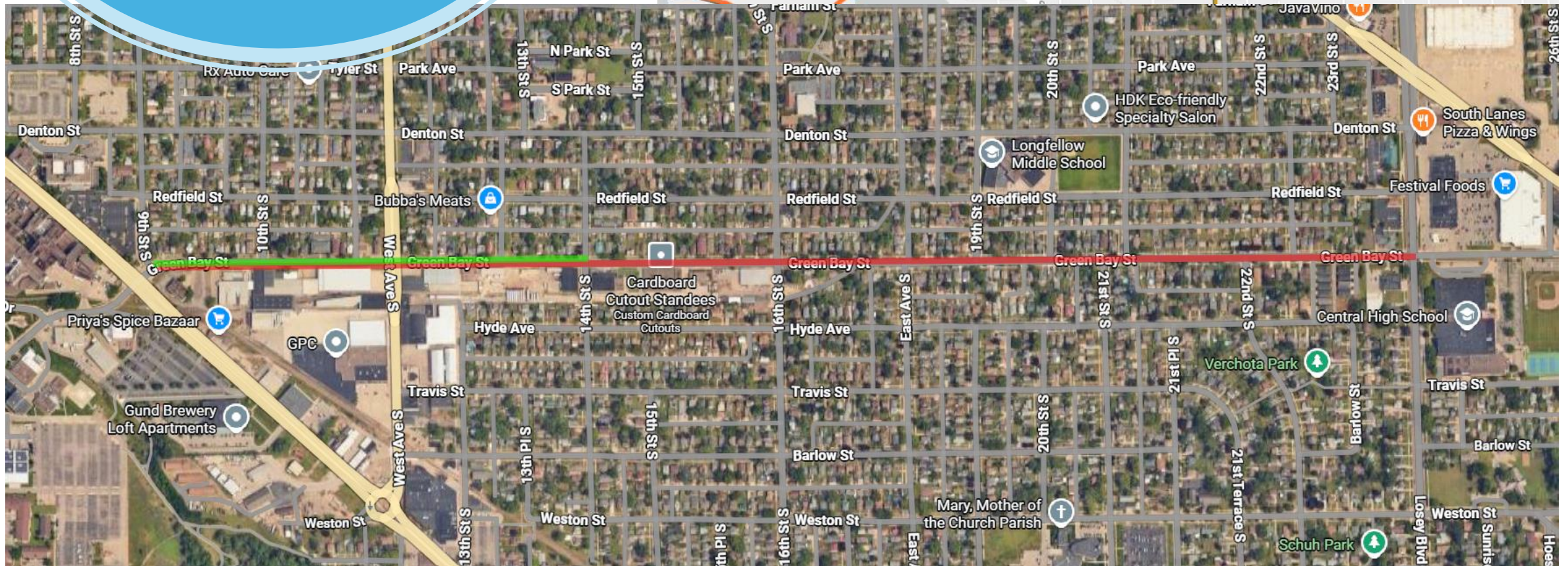
608-789-8676



# Housekeeping

- We will offer time for questions after the presentation
- Presentation will last 15-30 minutes
- If your questions are unanswered, please email [overbyj@cityoflacrosse.org](mailto:overbyj@cityoflacrosse.org) or [dinkelj@cityoflacrosse.org](mailto:dinkelj@cityoflacrosse.org)
- Filling out comment cards is the best way to provide and record input
- Respect each other and staff

# Scope of Project



# Purpose

- Currently working on design for reconstruction on 9<sup>th</sup>-14<sup>th</sup>
- Seeking input to inform design
- 2024 Bicycle and Pedestrian Master Plan calls for bicycle facilities due to proximity to
  - Central High School
  - Festival Foods
  - Gundersen
  - Other community amenities



## ALL AGES AND ABILITIES FACILITY AND SPOT IMPROVEMENT RECOMMENDATIONS

CROSSE  
'CLE + PEDESTRIAN  
'ER PLAN UPDATE

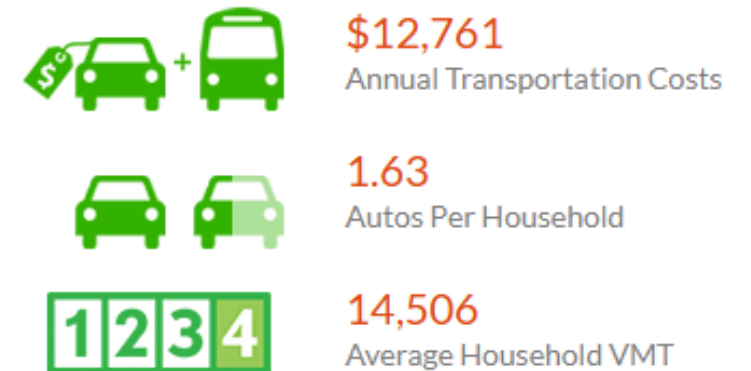
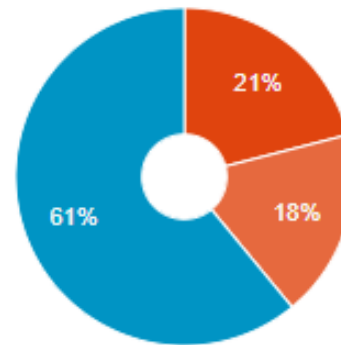
- RECOMMENDED FACILITIES**
- Greenway
  - Separated Facility
  - Trail
  - Long Term Separated Facility
  - Upgraded Existing Facility

- SPOT TREATMENTS**
- Added Access: trail, railroad crossing, etc.
  - Intersection Improvement: protected intersection, slip lanes, traffic dividers
  - Improved Crossing
  - Signal Improvement: LPI, signal adjustment

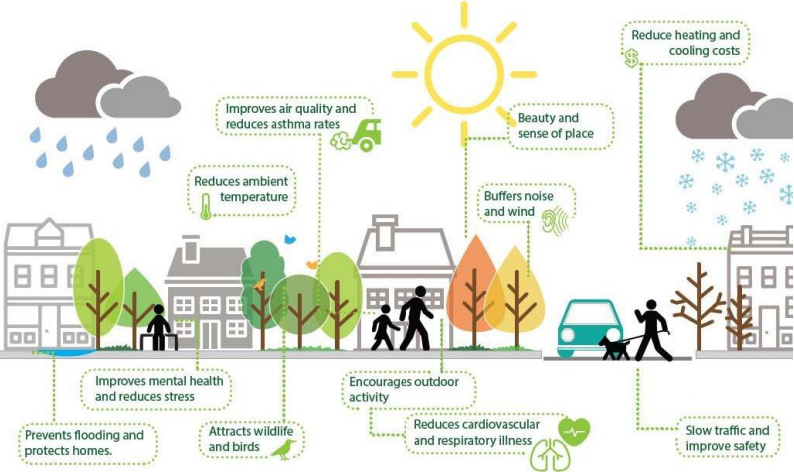
# Why Bike Lanes?



- Housing
- Transportation
- Remaining Income



# Plans and Policies



City of La Crosse  
**Safe Routes to School Plan » 2020**



February 2021



# Crashes

- 11 Bike/Ped Crashes in past 10 years
- Over 90 crashes on corridor in past 10 years
- Bicycle lanes provide opportunity to reduce conflict among all road users and can reduce total crashes up to 30%

# Process



Larger Engagement effort – Planning Documents



Parking Study



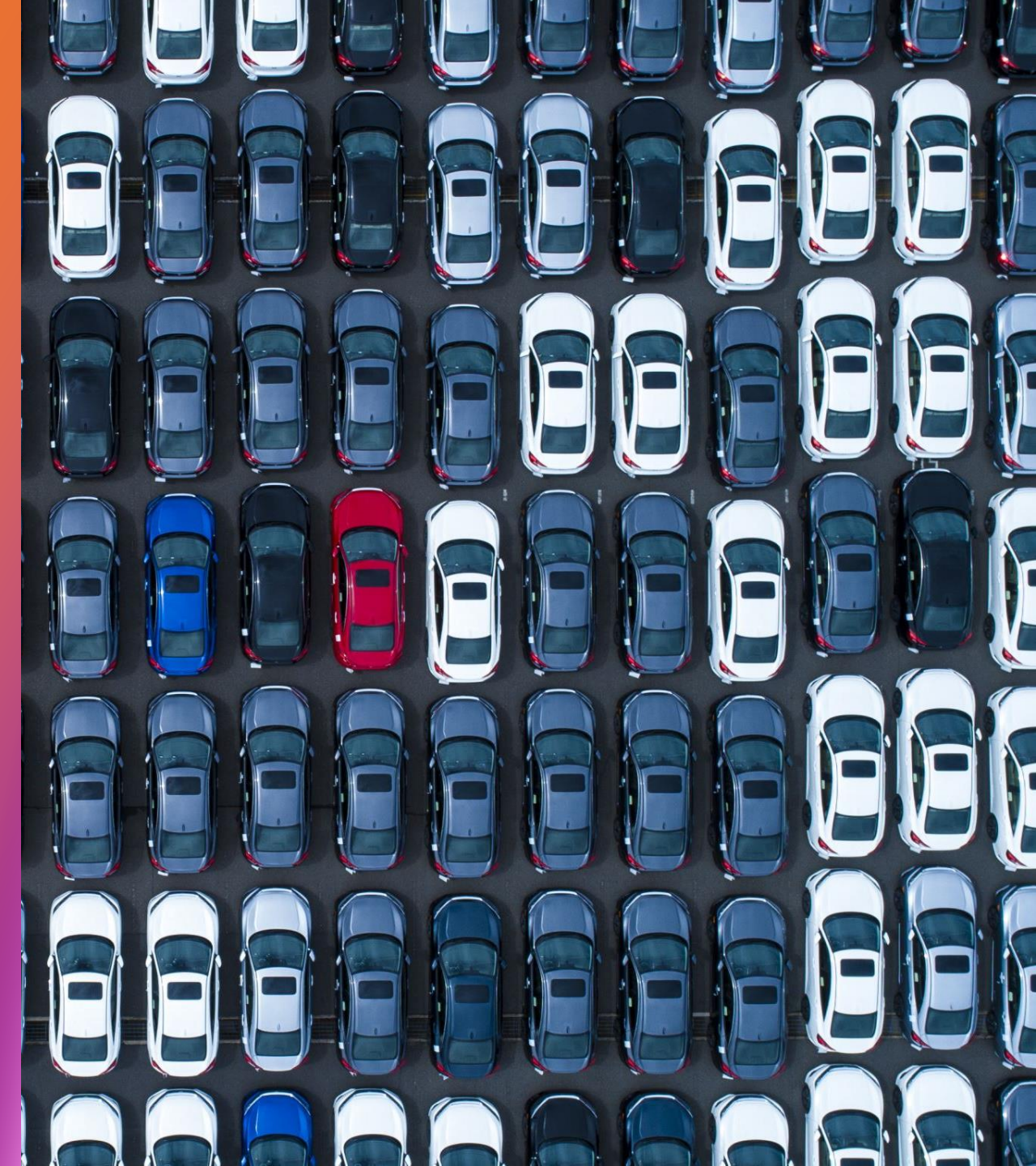
Bicycle and Pedestrian Advisory Committee



Stakeholder Engagement



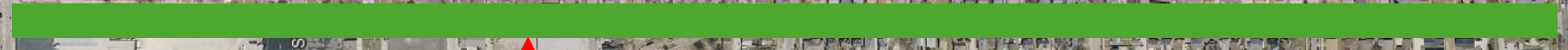
Board of Public Works



## Parking

- 337 Parking Spots on Corridor
- At its busiest parking was 24% full
- 10th to West is busiest section
  - Northern Section 60-70% full seven out of ten times
  - Southern Section greater than 50% full seven out of ten times
- Southern section of 9th-10th
  - Full three times, 50% full or greater five times
- 14th-22nd never greater 50% full

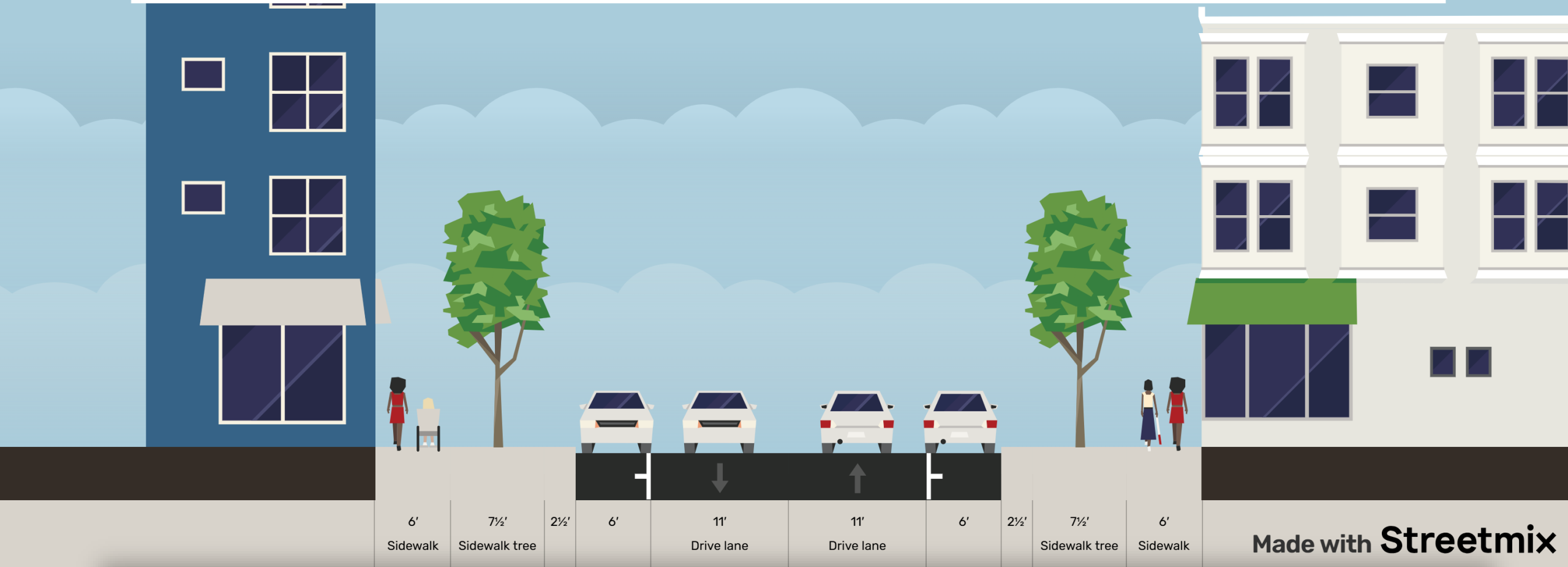
Alternative 2 or  
Existing Conditions



All Alternatives for  
Consideration

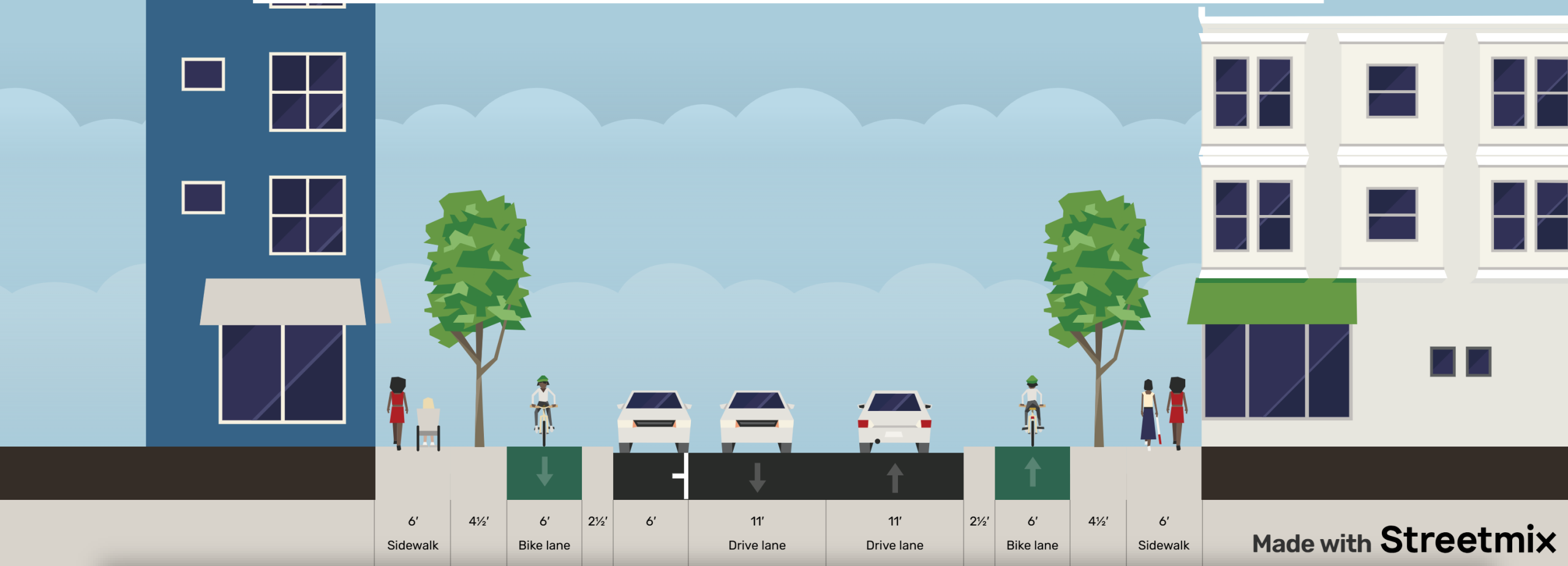


# Green Bay Street - Current Conditions



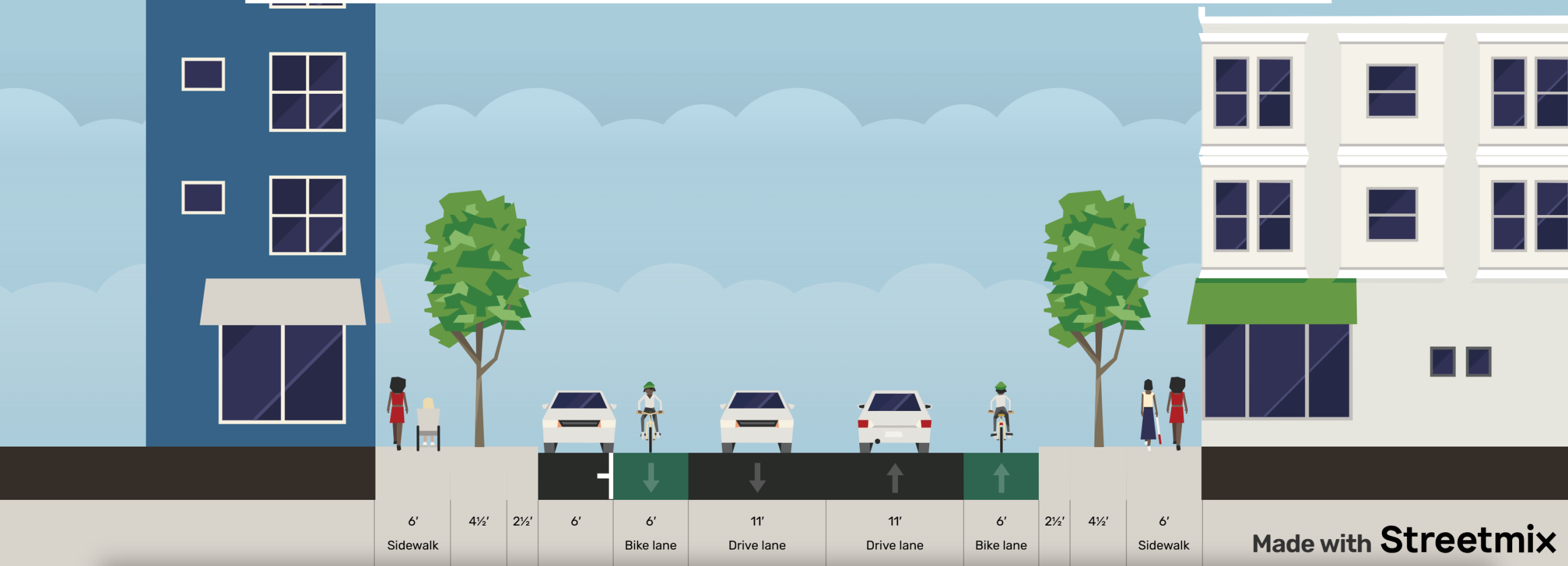
Current Conditions

# Green Bay Street Alternative 1



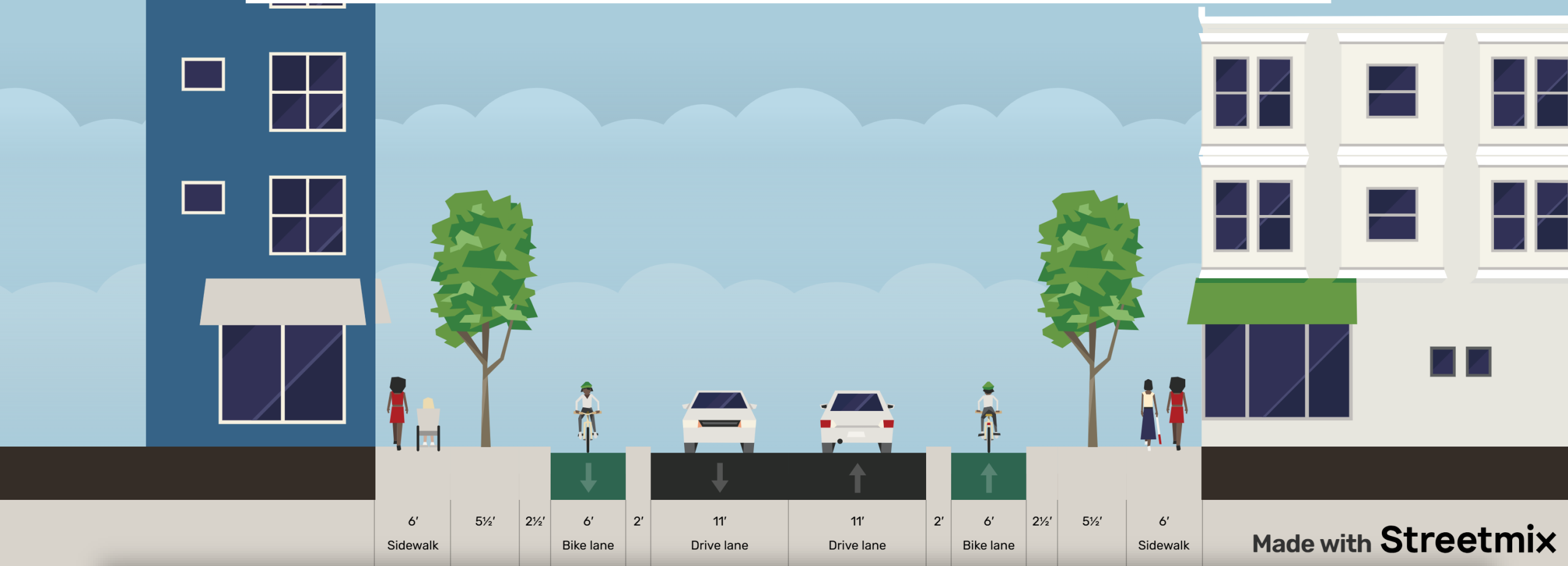
Alternative 1 – Protected, Raised

# Green Bay Street Alternative 2



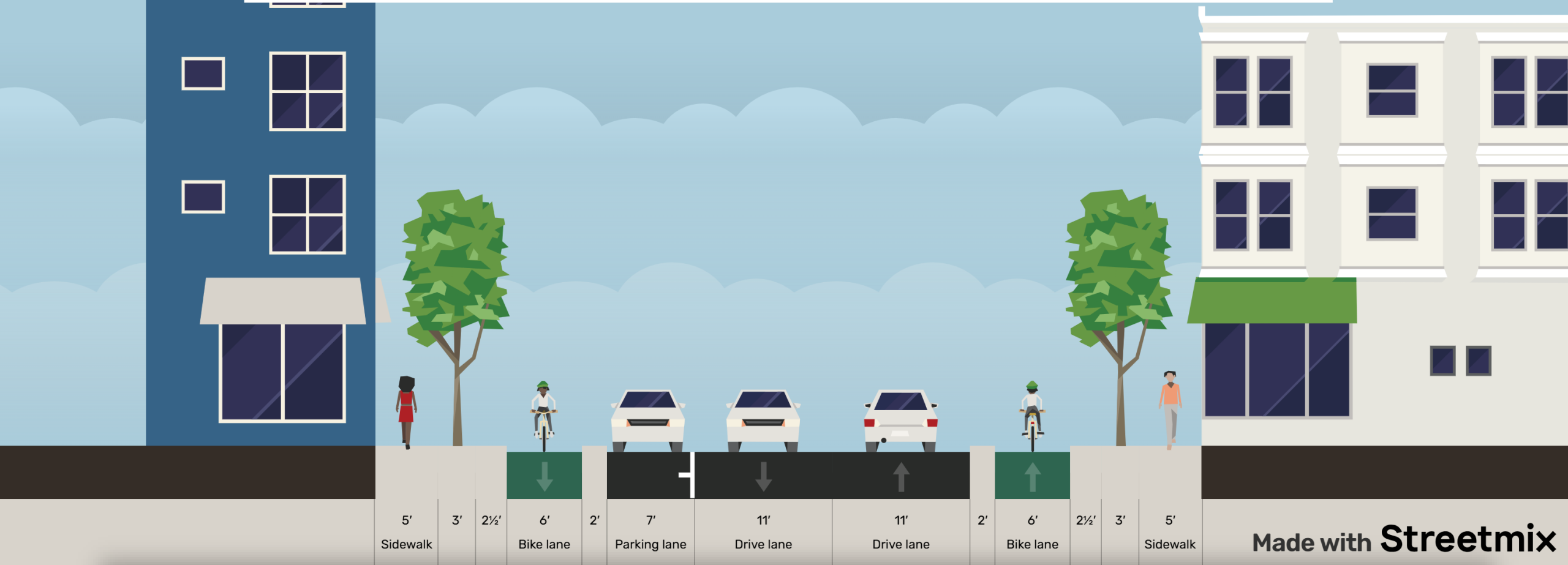
Alternative 2 – Unprotected, On Street

# Green Bay Street Alternative 3



Alternative 3 – Protected, on Street, No Parking

# Green Bay Street Alternative 4



Alternative 4 – Protected, on Street, with Parking

# Questions?

Jackson Overby

Engineer

608-789-7365

[overbyj@cityoflacrosse.org](mailto:overbyj@cityoflacrosse.org)

Jenna Dinkel

Associate Planner

608-789-8676

[dinkelj@cityoflacrosse.org](mailto:dinkelj@cityoflacrosse.org)