

Agenda Item 23-1487 (Lewis Kuhlman)

Resolution approving partial vacation of public street Right-of-Way on the east side of 28th Street South, near Fairchild Street East.

General Location

District 12, on the northeast corner of 28th St and Fairchild St E, near the Burlington Northern Railroad as depicted in MAP 23-1487. Adjacent uses include single-unit homes and railroad tracks.

Background Information

The property owner at 2803 Fairchild St E requested an investigation into the western property line. The line is not continuous with the western property line of 2808 Fairchild St W. The vacation would extend the property line west so there is a consistent 60' right-of-way. The property line will still preserve space for a boulevard and sidewalk in the future.

Recommendation of Other Boards and Commissions

The Board of Public Works is acting on this item on Monday, March 4th as well.

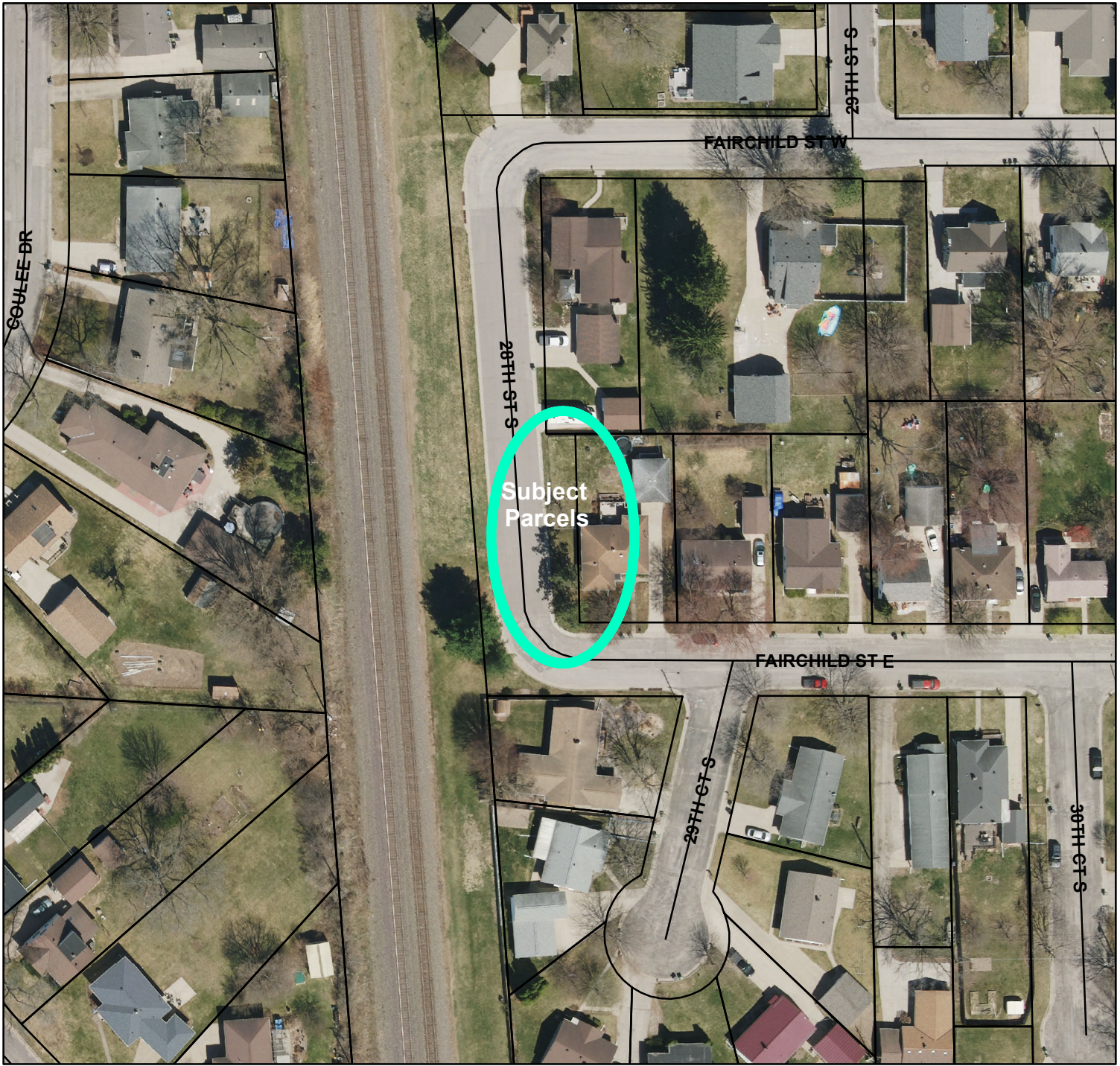
Consistency with Adopted Comprehensive Plan

This type of vacation isn't directly addressed in the comprehensive plan, This vacation has the potential to add more land for private use and development while still allowing space for public amenities.

Staff Recommendation

Approval – This vacation preserves the street and space for a sidewalk just in case, while potentially adding value to an adjacent property.

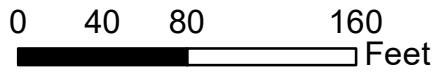
Routing F&P 3.7.2024

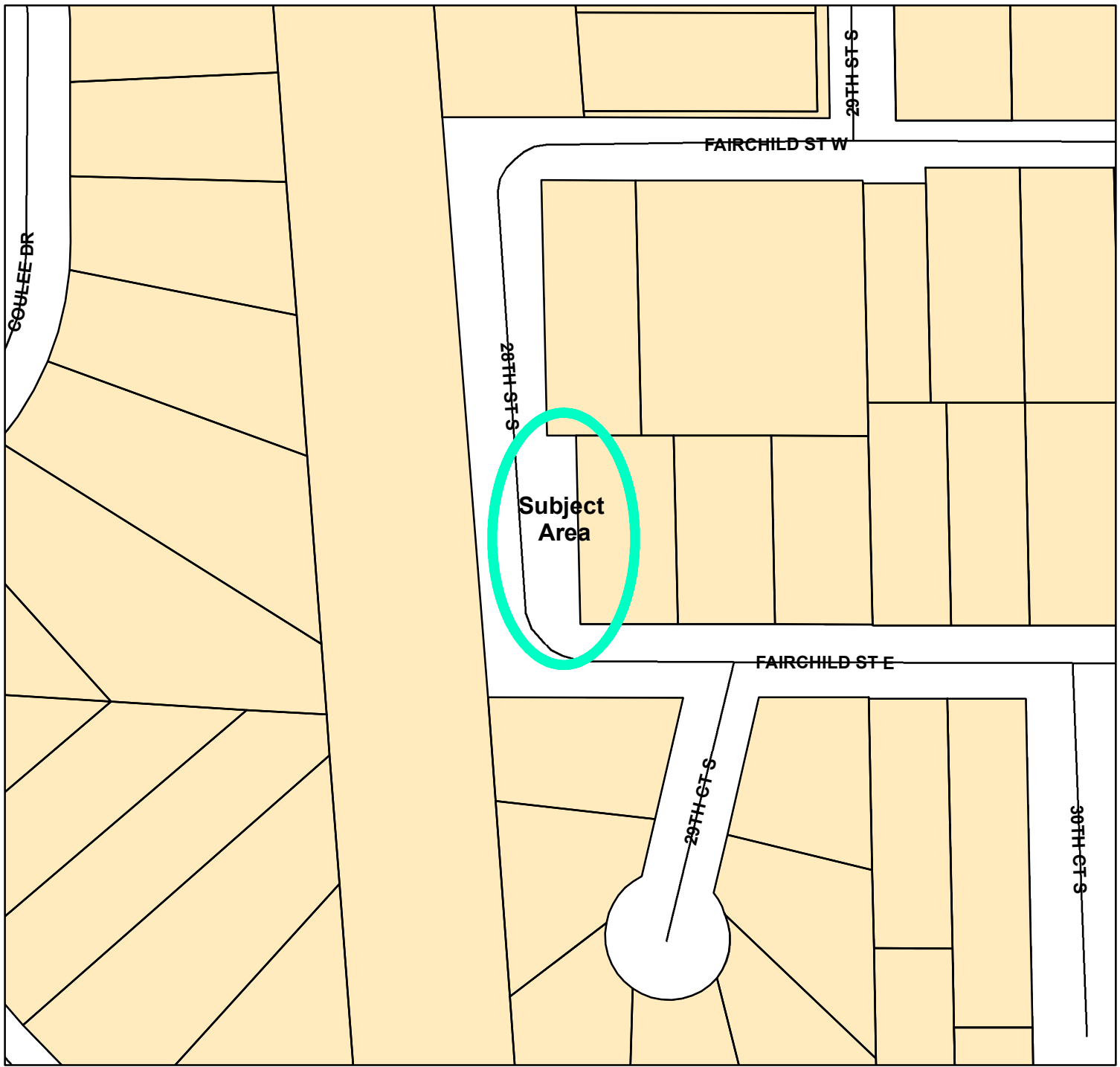


BASIC ZONING DISTRICTS

	R1 - SINGLE FAMILY
	R2 - RESIDENCE
	WR - WASHBURN RES
	R3 - SPECIAL RESIDENCE
	R4 - LOW DENSITY MULTI
	R5 - MULTIPLE DWELLING
	R6 - SPECIAL MULTIPLE
	PD- PLANNED DEVELOP
	TND - TRAD NEIGH DEV.
	C1 - LOCAL BUSINESS
	C2 - COMMERCIAL
	C3 - COMMUNITY BUSINESS
	M1 - LIGHT INDUSTRIAL
	M2 - HEAVY INDUSTRIAL
	PS - PUBLIC & SEMI-PUBLIC
	PL - PARKING LOT
	UT - PUBLIC UTILITY
	CON - CONSERVANCY
	FW - FLOODWAY
	A1 - AGRICULTURAL
	EA - EXCLUSIVE AG
	City Limits
	SUBJECT PROPERTY







BASIC ZONING DISTRICTS

	R1 - SINGLE FAMILY
	R2 - RESIDENCE
	WR - WASHBURN RES
	R3 - SPECIAL RESIDENCE
	R4 - LOW DENSITY MULTI
	R5 - MULTIPLE DWELLING
	R6 - SPECIAL MULTIPLE
	PD- PLANNED DEVELOP
	TND - TRAD NEIGH DEV.
	C1 - LOCAL BUSINESS
	C2 - COMMERCIAL
	C3 - COMMUNITY BUSINESS
	M1 - LIGHT INDUSTRIAL
	M2 - HEAVY INDUSTRIAL
	PS - PUBLIC & SEMI-PUBLIC
	PL - PARKING LOT
	UT - PUBLIC UTILITY
	CON - CONSERVANCY
	FW - FLOODWAY
	A1 - AGRICULTURAL
	EA - EXCLUSIVE AG
	City Limits
	SUBJECT PROPERTY



