

07.15.2025

# PRELIMINARY FLOOR PLAN

LA-Z-BOY -  
La CROSSE

|             |           |
|-------------|-----------|
| TOTAL BLDG. | 12,761 SF |
| STOCK ROOM  | 550 SF    |
| SHOW ROOM   | 10,968 SF |
| RESTROOMS   | 164 SF    |
| OTHER       | 1,079 SF  |

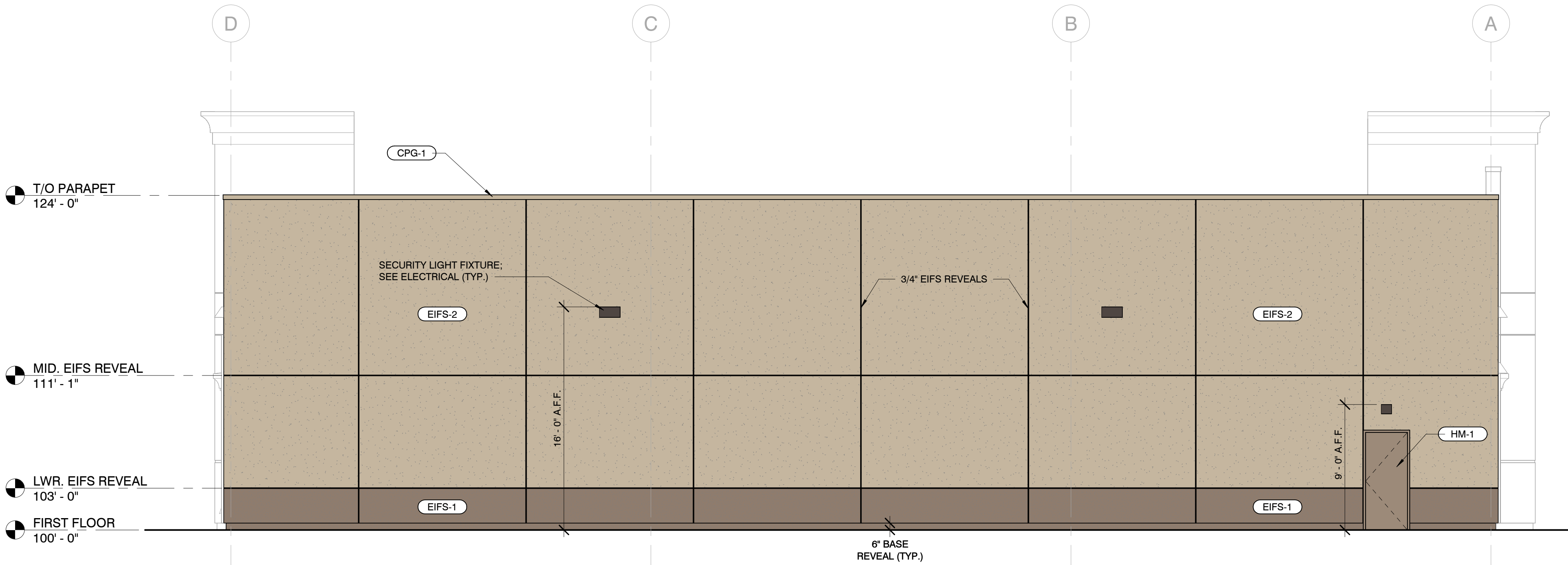
### A3.1



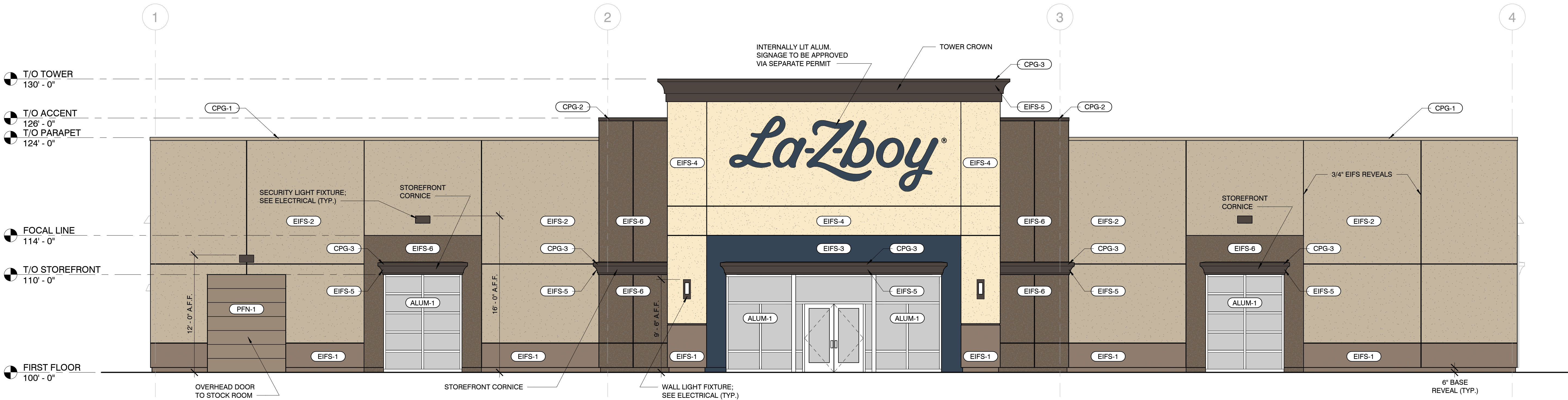


S:\General\ACTIVE PROJECTS\La-Z-Boy\La-Crosse, WI\4-Construction Documents\25 0707\_La-Z-Boy - La-Crosse\_Master.rvt  
7/14/2025 12:59:01 PM

| KEY SCHEDULE - ELEVATION FINISHES |                                     |                                      |  |
|-----------------------------------|-------------------------------------|--------------------------------------|--|
| CODE                              | MATERIAL TYPE                       | LOCATION                             | COLOR  |
| ALUM-1                            | ALUMINUM STOREFRONT                 | AT FRONT ELEVATION                   | CLEAR ANODIZED ALUMINUM  |
| CPG-1                             | METAL COPING                        | AT MAIN BUILDING WALLS               | PRE-FINISHED TO MATCH EIFS COLOR MEDIUM CREAM  |
| CPG-2                             | METAL COPING                        | AT ACCENT WALL PARAPET               | PRE-FINISHED TO MATCH EIFS COLOR MEDIUM BROWN  |
| CPG-3                             | METAL COPING                        | AT MAIN ENTRY PARAPET                | RE-FINISHED TO MATCH EIFS COLOR DARK BROWN   |
| EIFS-1                            | EXTERIOR INSULATED FINISHING SYSTEM | BUILDING BASE                        | LIGHT BROWN - LAZB-20-1022ST WITH DRYVIT SANDBEBBLE FINE TEXTURE FINISH WITH STRATOTONE HIGH PERFORMANCE COLORANT  |
| EIFS-2                            | EXTERIOR INSULATED FINISHING SYSTEM | GENERAL BUILDING FACADE              | MEDIUM CREAM - LAZB-19-1022ST WITH DRYVIT SANDBEBBLE FINE TEXTURE FINISH WITH STRATOTONE HIGH PERFORMANCE COLORANT |
| EIFS-3                            | EXTERIOR INSULATED FINISHING SYSTEM | BUILDING ACCENT AT ENTRY             | BLUE - LAZB-21-1022S WITH DRYVIT SANDBEBBLE FINE TEXTURE FINISH WITH STRATOTONE HIGH PERFORMANCE COLORANT          |
| EIFS-4                            | EXTERIOR INSULATED FINISHING SYSTEM | MAIN ENTRY PORTAL FACADE             | LIGHT CREAM - LAZB-23-1022ST WITH DRYVIT SANDBEBBLE FINE TEXTURE FINISH WITH STRATOTONE HIGH PERFORMANCE COLORANT  |
| EIFS-5                            | EXTERIOR INSULATED FINISHING SYSTEM | ORNAMENTAL COPING, TRIM & REVEAL     | DARK BROWN - LAZB-22-1022S WITH DRYVIT SANDBEBBLE FINE TEXTURE FINISH WITH STRATOTONE HIGH PERFORMANCE COLORANT    |
| EIFS-6                            | EXTERIOR INSULATED FINISHING SYSTEM | BUILDING ACCENT                      | MEDIUM BROWN - LAZB-24-1022ST WITH DRYVIT SANDBEBBLE FINE TEXTURE FINISH WITH STRATOTONE HIGH PERFORMANCE COLORANT |
| HM-1                              | HOLLOW METAL DOOR                   |                                      | PAINTED SW 7508 TAVERN TAUPE   |
| P-1                               | PAINT NON EIFS ITEMS                | AT ENTRY PORTAL SIDES/COLS.          | LIGHT BROWN - LAZB-20-1085ST WITH DRYVIT STRATOTONE HIGH PERFORMANCE COLORANT                                      |
| P-2                               | PAINT NON EIFS ITEMS                | GENERAL BUILDING FACADE              | MEDIUM CREAM - LAZB-19-1085ST WITH DRYVIT STRATOTONE HIGH PERFORMANCE COLORANT                                     |
| P-3                               | PAINT NON EIFS ITEMS                | BUILDING ACCENT                      | BLUE - LAZB-21-1085S WITH DRYVIT STRATOTONE HIGH PERFORMANCE COLORANT  |
| P-4                               | PAINT NON EIFS ITEMS                | MAIN ENTRY PORTAL                    | LIGHT CREAM - LAZB-23-1085ST WITH DRYVIT STRATOTONE HIGH PERFORMANCE COLORANT                                      |
| P-5                               | PAINT NON EIFS ITEMS                | ORNAMENTAL COPING & TRIM             | DARK BROWN - LAZB-22-1085S WITH DRYVIT STRATOTONE HIGH PERFORMANCE COLORANT  |
| P-6                               | PAINT NON EIFS ITEMS                | BUILDING ACCENT                      | MEDIUM BROWN - LAZB-24-1085ST WITH DRYVIT STRATOTONE HIGH PERFORMANCE COLORANT                                     |
| PFN-1                             | PRE-FINISHED METAL                  | DOWNSPOUTS ( & GUTTER) AND O.H. DOOR | PRE-FINISHED TO MATCH SW 7508 TAVERN TAUPE   |



**2 WEST**  
A3.1 | A5.1  
3/16" = 1'-0"



**1 SOUTH**  
A3.1 | A5.1  
3/16" = 1'-0"

**in.studio**  
architecture

833 E. Michigan St. | Suite 540 | Milwaukee, WI 53202  
ph. 414.278.6804 | www.instudioarch.com

PROJECT NO. 25.107 DRAWN BY JD ORG. ISSUE DATE 07.15.2025

**La-Z-boy**

VALLEY VIEW MALL DEVELOPMENT, LA CROSSE, WI 54601

ISSUED FOR:  
REVIEW SET  
07.15.2025

SHEET TITLE:  
**BUILDING  
ELEVATIONS**

STORE NAME:  
**LA-Z-BOY -  
La CROSSE**

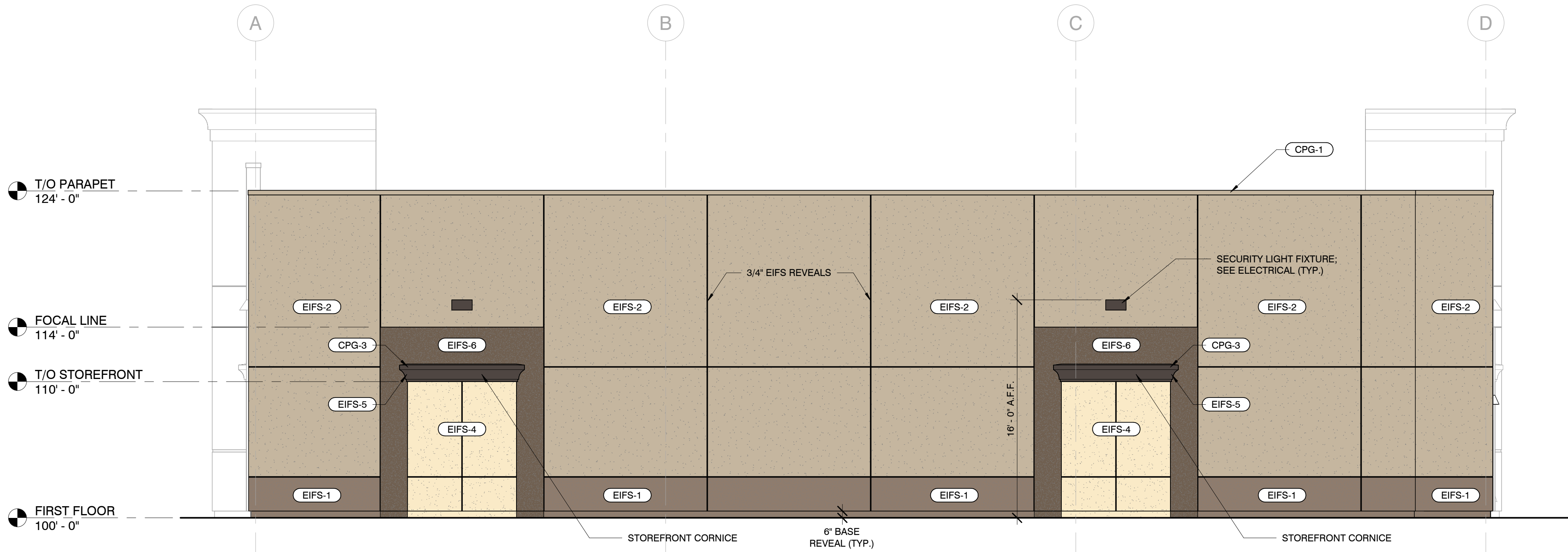
USABLE SQUARE FOOTAGES:  
TOTAL BLDG. 12,761 SF  
STOCK ROOM 550 SF  
SHOW ROOM 10,968 SF  
RESTROOMS 164 SF  
OTHER 1,079 SF

SHEET NO.  
**A5.1**

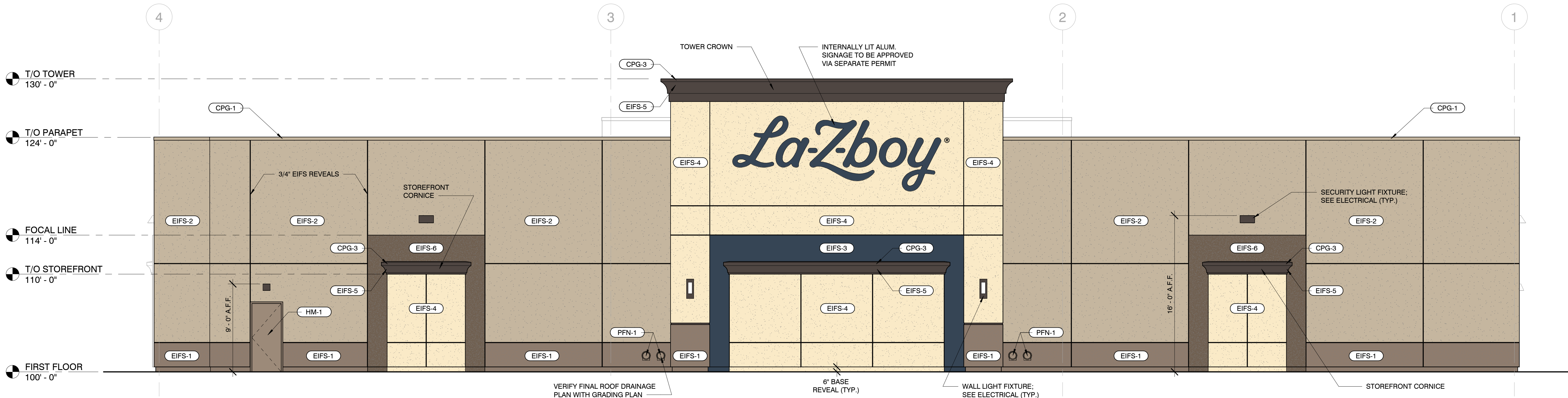


S:\General\ACTIVE PROJECTS\La-Z-Boy\La-Crosse, WI\4-Construction Documents\25 0707\_La-Z-Boy - La-Crosse\_Master.rvt  
7/14/2025 12:59:02 PM

| KEY SCHEDULE - ELEVATION FINISHES |                                     |                                      |  |
|-----------------------------------|-------------------------------------|--------------------------------------|--|
| CODE                              | MATERIAL TYPE                       | LOCATION                             | COLOR  |
| ALUM-1                            | ALUMINUM STOREFRONT                 | AT FRONT ELEVATION                   | CLEAR ANODIZED ALUMINUM  |
| CPG-1                             | METAL COPING                        | AT MAIN BUILDING WALLS               | PRE-FINISHED TO MATCH EIFS COLOR MEDIUM CREAM  |
| CPG-2                             | METAL COPING                        | AT ACCENT WALL PARAPET               | PRE-FINISHED TO MATCH EIFS COLOR MEDIUM BROWN  |
| CPG-3                             | METAL COPING                        | AT MAIN ENTRY PARAPET                | RE-FINISHED TO MATCH EIFS COLOR DARK BROWN   |
| EIFS-1                            | EXTERIOR INSULATED FINISHING SYSTEM | BUILDING BASE                        | LIGHT BROWN - LAZB-20-1022ST WITH DRYVIT SANDPEBBLE FINE TEXTURE FINISH WITH STRATOTONE HIGH PERFORMANCE COLORANT  |
| EIFS-2                            | EXTERIOR INSULATED FINISHING SYSTEM | GENERAL BUILDING FACADE              | MEDIUM CREAM - LAZB-19-1022ST WITH DRYVIT SANDPEBBLE FINE TEXTURE FINISH WITH STRATOTONE HIGH PERFORMANCE COLORANT |
| EIFS-3                            | EXTERIOR INSULATED FINISHING SYSTEM | BUILDING ACCENT AT ENTRY             | BLUE - LAZB-21-1022S WITH DRYVIT SANDPEBBLE FINE TEXTURE FINISH WITH STRATOTONE HIGH PERFORMANCE COLORANT          |
| EIFS-4                            | EXTERIOR INSULATED FINISHING SYSTEM | MAIN ENTRY PORTAL FACADE             | LIGHT CREAM - LAZB-23-1022ST WITH DRYVIT SANDPEBBLE FINE TEXTURE FINISH WITH STRATOTONE HIGH PERFORMANCE COLORANT  |
| EIFS-5                            | EXTERIOR INSULATED FINISHING SYSTEM | ORNAMENTAL COPING, TRIM & REVEAL     | DARK BROWN - LAZB-22-1022S WITH DRYVIT SANDPEBBLE FINE TEXTURE FINISH WITH STRATOTONE HIGH PERFORMANCE COLORANT    |
| EIFS-6                            | EXTERIOR INSULATED FINISHING SYSTEM | BUILDING ACCENT                      | MEDIUM BROWN - LAZB-24-1022ST WITH DRYVIT SANDPEBBLE FINE TEXTURE FINISH WITH STRATOTONE HIGH PERFORMANCE COLORANT |
| HM-1                              | HOLLOW METAL DOOR                   |                                      | PAINTED SW 7508 TAVERN TAUPE   |
| P-1                               | PAINT NON EIFS ITEMS                | AT ENTRY PORTAL SIDES/COLS.          | LIGHT BROWN - LAZB-20-1085ST WITH DRYVIT STRATOTONE HIGH PERFORMANCE COLORANT                                      |
| P-2                               | PAINT NON EIFS ITEMS                | GENERAL BUILDING FACADE              | MEDIUM CREAM - LAZB-19-1085ST WITH DRYVIT STRATOTONE HIGH PERFORMANCE COLORANT                                     |
| P-3                               | PAINT NON EIFS ITEMS                | BUILDING ACCENT                      | BLUE - LAZB-21-1085S WITH DRYVIT STRATOTONE HIGH PERFORMANCE COLORANT  |
| P-4                               | PAINT NON EIFS ITEMS                | MAIN ENTRY PORTAL                    | LIGHT CREAM - LAZB-23-1085ST WITH DRYVIT STRATOTONE HIGH PERFORMANCE COLORANT                                      |
| P-5                               | PAINT NON EIFS ITEMS                | ORNAMENTAL COPING & TRIM             | DARK BROWN - LAZB-22-1085S WITH DRYVIT STRATOTONE HIGH PERFORMANCE COLORANT  |
| P-6                               | PAINT NON EIFS ITEMS                | BUILDING ACCENT                      | MEDIUM BROWN - LAZB-24-1085ST WITH DRYVIT STRATOTONE HIGH PERFORMANCE COLORANT                                     |
| PFN-1                             | PRE-FINISHED METAL                  | DOWNSPOUTS ( & GUTTER) AND O.H. DOOR | PRE-FINISHED TO MATCH SW 7508 TAVERN TAUPE   |



**2 EAST**  
A3.1 | A5.2  
3/16" = 1'-0"



**1 NORTH**  
A3.1 | A5.2  
3/16" = 1'-0"

**in.studio**  
architecture  
833 E. Michigan St. | Suite 540 | Milwaukee, WI 53202  
ph. 414.278.6804 | www.instudioarch.com

PROJECT NO. 25.107 DRAWN BY JD ORG. ISSUE DATE 07.15.2025

REVIEW SET - NOT FOR CONSTRUCTION

**La-Z-boy**  
VALLEY VIEW MALL DEVELOPMENT, LA CROSSE, WI 54601

ISSUED FOR:  
REVIEW SET 07.15.2025

SHEET TITLE:  
**BUILDING  
ELEVATIONS**

STORE NAME:  
**LA-Z-BOY -  
La CROSSE**

USABLE SQUARE FOOTAGES:  
TOTAL BLDG. 12,761 SF  
STOCK ROOM 550 SF  
SHOW ROOM 10,968 SF  
RESTROOMS 164 SF  
OTHER 1,079 SF

SHEET NO.  
**A5.2**

© La-Z-Boy © in. studio architecture, llc.