

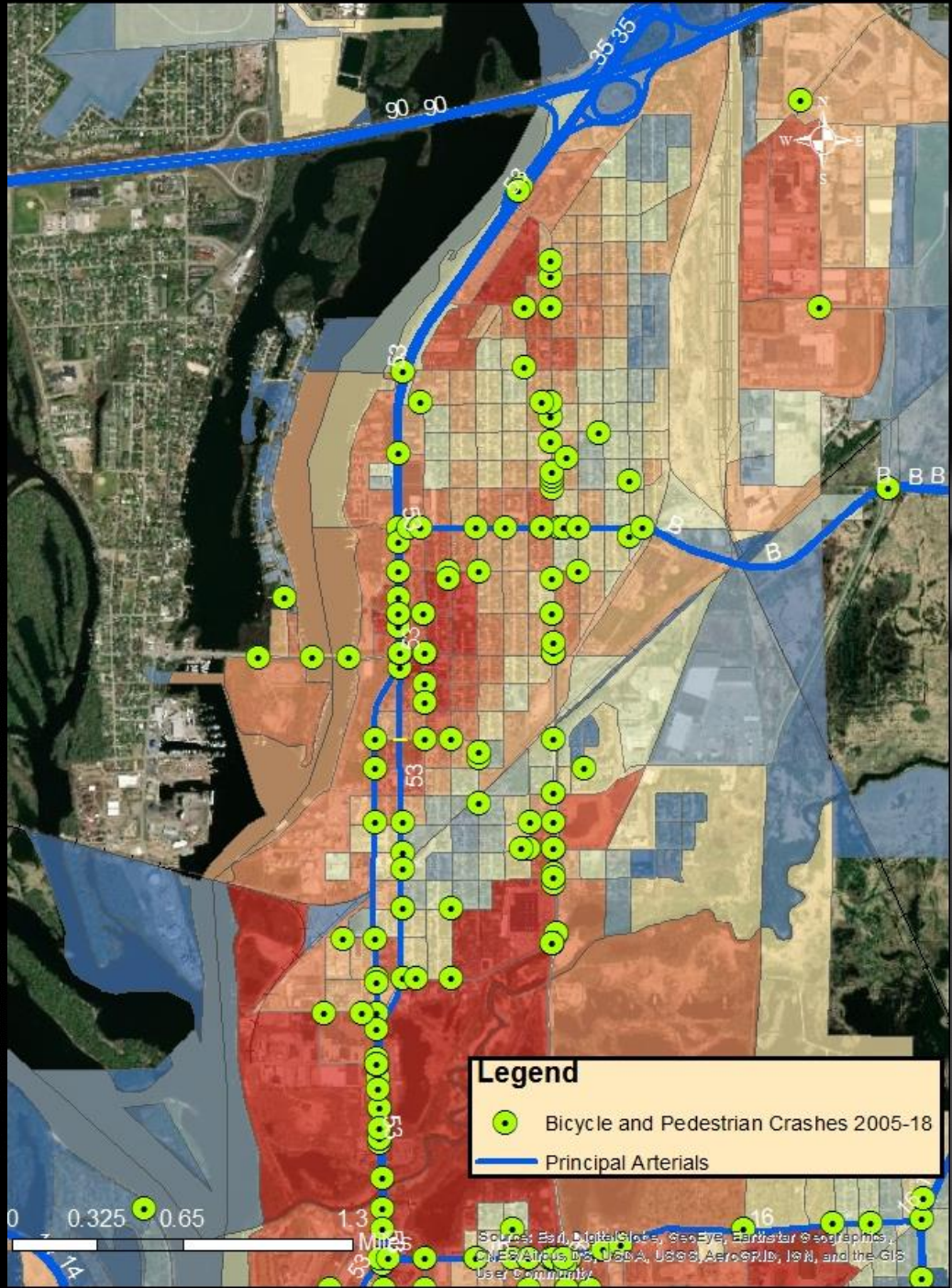
Gillette Street Reconstruction

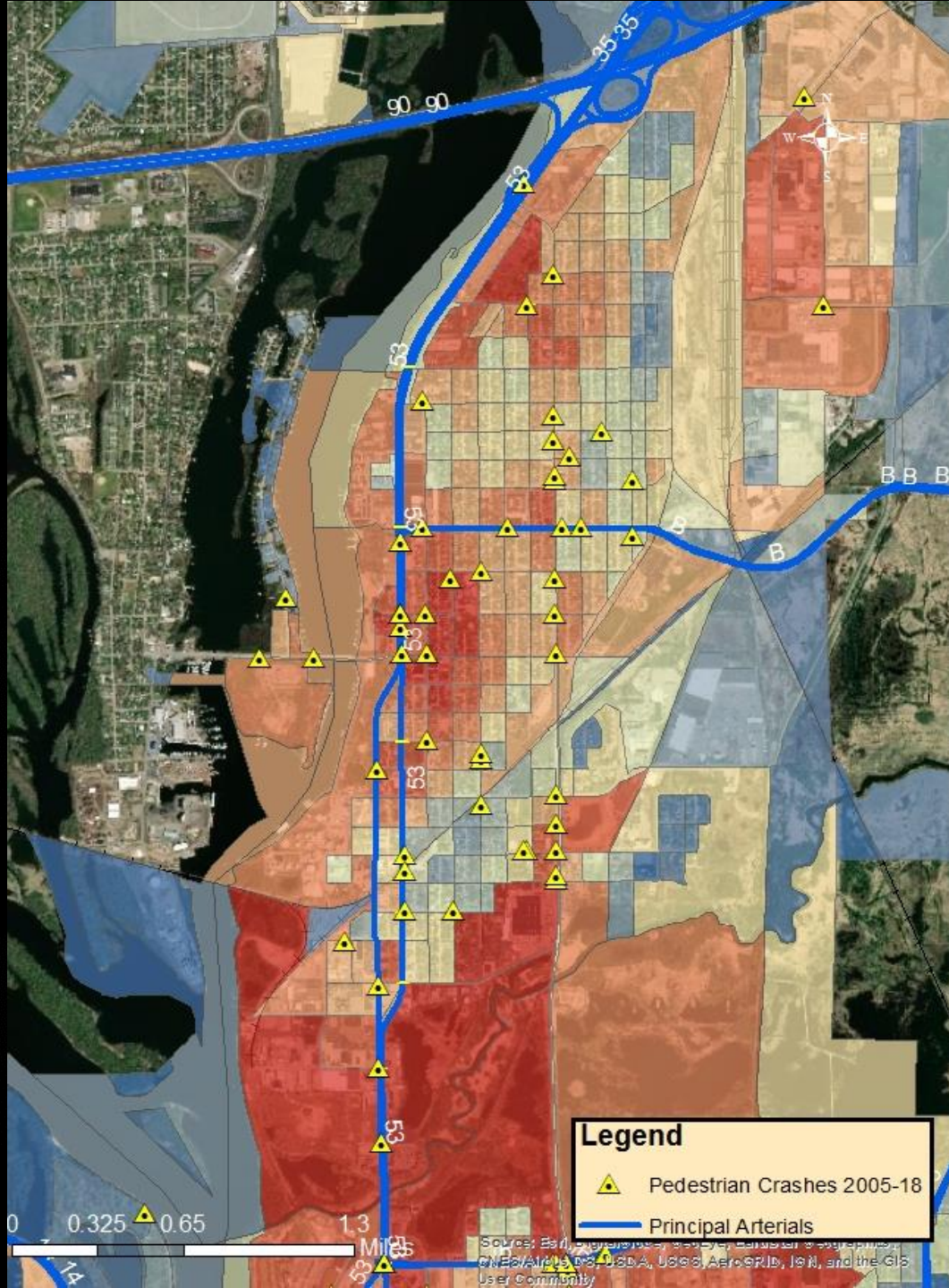
*By: Jamie Hassemer ~Civil Engineer I and Jack
Zabrowski ~Associate Planner*

*City of La Crosse Engineering, Planning and
Development Departments*

Why Bike Lanes

- Adopted 2012 Bicycle and Pedestrian Master Plan
- Crash Map 2005-2018
- Crash Reduction Factor of 40-73%
http://www.cmfclearinghouse.org/study_detail.cfm?stid=433
- Numerous Bicycle and Pedestrian Traffic Generators in Corridor
 - Northside Elementary School
 - Coulee Montessori Charter School
 - Gordy's Market
 - Bus route and bus stops
 - Logan High School





Legend

-  Pedestrian Crashes 2005-18
-  Principal Arterials

Source: Esri, DeLorme, GeoEye, "DigitalGlobe", GeoEye, "GeoEye", IGN, ViaSat, "WorldView", CNES/Airbus DS, USDA, USGS, AeroGRID, IGN, and the GIS User Community



THE CITY OF
LA CROSSE
WISCONSIN



BICYCLE AND PEDESTRIAN MASTER PLAN
FALL 2012



Building La Crosse's proposed bikeway network could provide positive economic impacts for the region. Over a 20-year period, the proposed bikeway network could provide residents with **\$281 million to \$299 million in total economic benefits**, including:

\$194-202 MILLION 

in **HEALTH + SAFETY BENEFITS** over 20 years

\$60-69 MILLION 

in **TRANSPORTATION + AIR QUALITY BENEFITS** over 20 years

\$27 MILLION 

in **ECONOMIC + PROPERTY BENEFITS** over 20 years

Interested
in learning
more?



The project team is happy to answer any questions. You can also read the full report, *Cycle La Crosse: Economic Impact Analysis of a Better Bikeway Network in La Crosse, WI* for more details.

cityoflacrosse.org/bikeeconomicimpact

Parking Areas

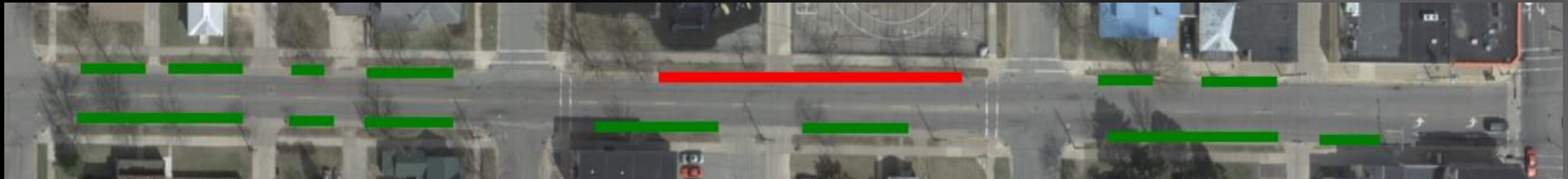


Rose
St

Caledonia
St

Avon
St

Liberty
St



Liberty
St

Charles
St

Kane
St

George
St



George
St

Wood
St

Loomis
St

Prospect
St

Parking Data

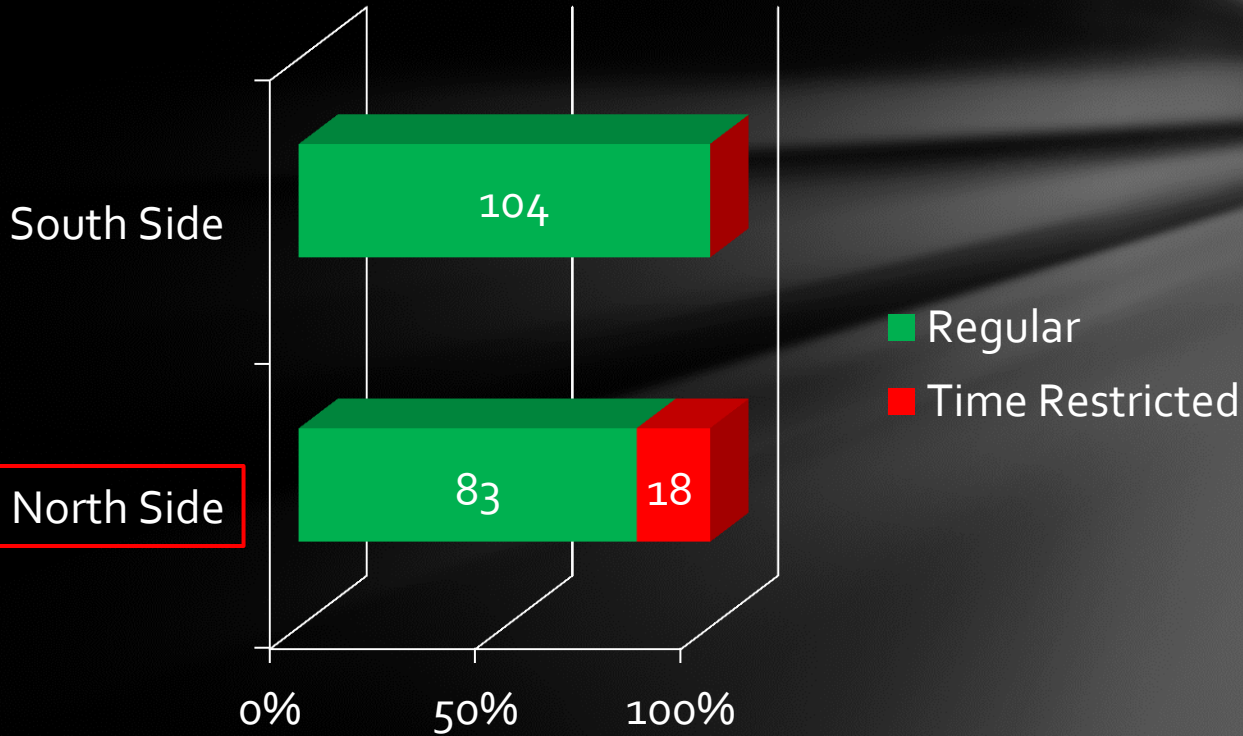
Date	Time	Northside	Southside	Totals	Total Available	Utilization
1/25/19	13:35	3	12	15	187	8%
1/29/19	10:10	8	5	13	187	7%
1/30/19	15:30	5	6	11	187	5.8%
1/30/19	17:30	7	8	15	205	7.3%
1/31/19	23:38	2	7	9	205	4.4%
2/6/19	09:10	0	3	3	187	1.6%

Results:

Average Parked Vehicles: 11 Vehicles

Average Utilization: 5.7%

Gillette Street Parking Counts



Engineering recommendation

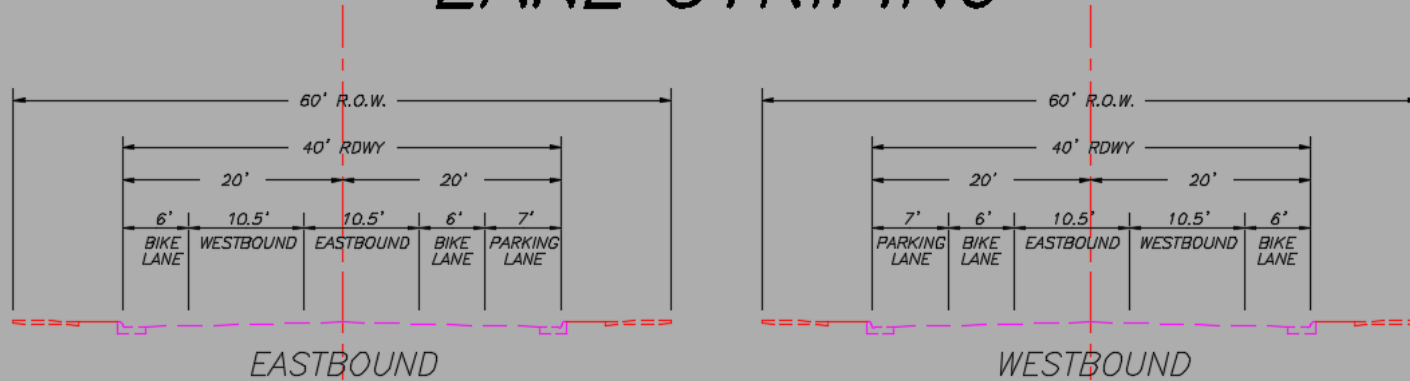
Project Time Line

- 2019
 - George Street to Onalaska Avenue
 - Due to long lateral removal, aged and/or failing utilities
 - Preliminary Construction time frame
 - May –August Construction
 - Restoration 2020
- 2021-2022
 - UTP urban funding



Typical Street Cross-section

GILLETTE STREET LANE STRIPING



Questions



Thank you for
your time