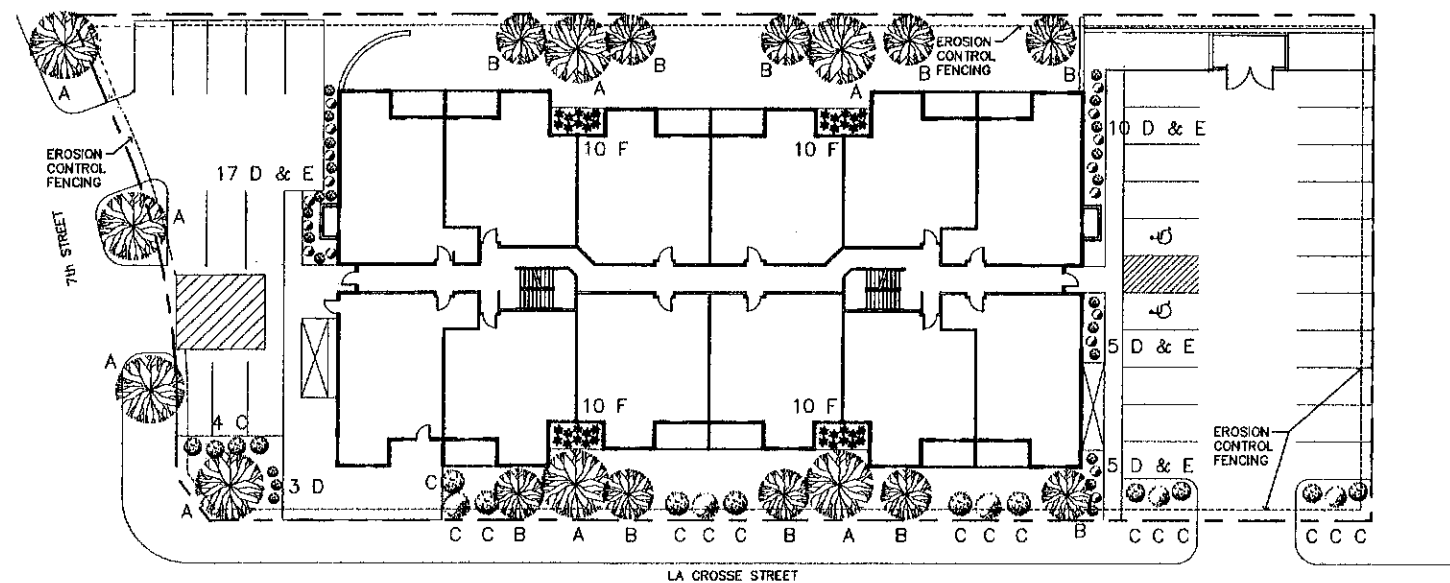
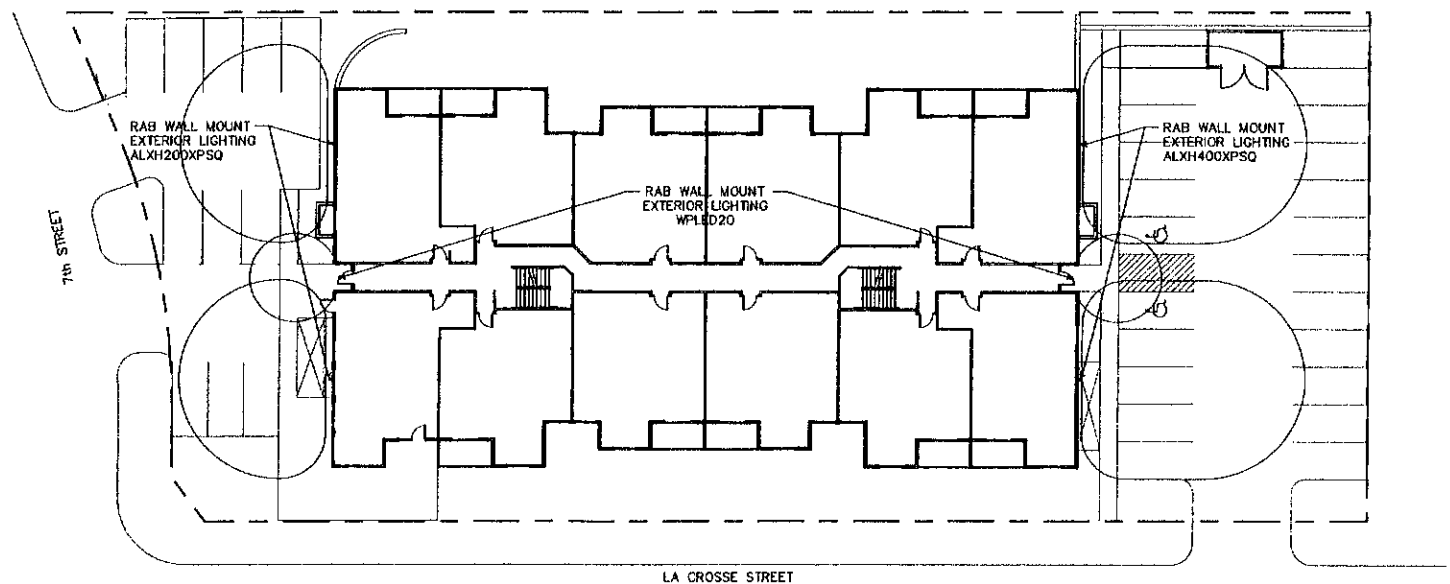


3 SITE PLAN  
1" = 20'-0"



2 LANDSCAPE EROSION CONTROL PLAN  
1" = 20'-0"



1 SITE LIGHTING PLAN  
1" = 20'-0"

**SITE / LANDSCAPE NOTES**

- RECREATION AREA REQUIRED: 200 S.F. + 1,350 S.F. = 1,550 S.F. REQ'D
- 1,550 S.F. REQ'D < 2,300 S.F. ACTUAL
- BIKE PARKING REQUIRED: 58 BEDROOMS/3 = 19 SPACES
- 19 SPACES REQ'D < 20 SPACES ACTUAL
- LANDSCAPED AREA REQUIRED: BOULEVARD TREES - 3
- FRONTAGE REQ'D: 380 S.F./40 = 10
- LANDSCAPED AREA: 5,100 S.F./600 = 9
- DOWNSPOUTS TO DRAIN ONLY ON PROPERTY
- STREET FACING WINDOWS: 4,318 S.F. X 20% = 863 S.F. REQ. ACTUAL 1,157 S.F. > 863 S.F. REQ.

**LANDSCAPE SCHEDULE**

ID	NO.	PLANT SPECIES	SIZE
A	8	MAPLE AUTUMN BLAZE	3"
B	9	BLACK HILLS SPRUCE	2"
C	18	TECHNY ARBORVITAE	5'-0"
D	20	SPIREA GOLDFLAME	5 GAL.
E	20	EUONYMUS OR. BUSH	5 GAL.
F	40	ORNAMENTAL GRASS	1 GAL.



**ROUSH RENTALS**  
LOCAL . PERSONAL . RESPONSIVE

**GENERAL NOTES**

- OCCUPANCY - R2 APARTMENT
- CONSTRUCTION - TYPE VB
- SOIL BEARING - 3000 PSF (ASSUMED)
- CONCRETE - 3000 PSI TO COMPLY W/ ASTM C94
- STEEL - TO COMPLY W/ ASTM A36
- LUMBER - 2 X 4 STANDARD & BETTER
- 2 X 8 #2 SPF
- 2 X 8 # LARGER - #2 D.F.
- STRUCTURE TO BE CONSTRUCTED IN ACCORDANCE WITH IBC SECTION 2308 - CONVENTIONAL LIGHT-FRAME CONSTRUCTION.
- ALL WALLS SHOWN HATCHED TO HAVE 5/8" TYPE "X" FIRE-RATED GYPSUM BOARD BOTH SIDES AND PROVIDE 1-HR. FIRE-RESISTIVE RATING. PROVIDE 1-HR. RATED DOOR ASSEMBLIES (1-HR. FRAMES AND 20 MINUTE DOORS) IN RATED WALLS. BALANCE OF ALL OTHER INTERIOR WALLS TO HAVE 1/2" GYPSUM BOARD.
- BATH EXHAUST - SYSTEM TO BE 50 CFM.
- ATTIC VENTILATION - NET FREE AREA NOT LESS THAN 1/300 OF VENTILATION AREA.
- ROOF TRUSSES - DESIGN FOR 40# LL BY REGISTERED WISCONSIN ENGINEER AND ANCHORED TO WALL ACCORDINGLY.
- EACH BEDROOM SHALL BE PROVIDED WITH AN EGRESS WINDOW COMPLYING W/ IBC SECT. 1028. STYLE TO BE SLIDE-BY, SIZES GIVEN ARE NOMINAL, MIN. CLEAR OPENING WIDTH OF 20" AND HEIGHT OF 24".
- WALL AND FLOOR CONSTRUCTION TO MEET SOUND TRANSMISSION LIMITATIONS PER IBC 1207.2.
- INTERIOR WALL AND CEILING FINISHES TO MEET CLASSIFICATIONS AS SPECIFIED IN IBC TABLE 603.8, CLASS C RATING FOR SPRINKLERED STRUCTURE.
- FIRE EXTINGUISHERS SHALL BE PROVIDED PER IBC SECT. 906 AND MAINTAINED PER NFPA 10. LOCATION PER LOCAL FIRE MARSHAL.
- MANUAL FIRE ALARM SYSTEM REQUIRED THROUGHOUT STRUCTURE.
- PROVIDE INTERCONNECTED SMOKE ALARMS IN EACH BEDROOM, OUTSIDE EACH SLEEPING AREA AND ON EACH STORY WITHIN THE DWELLING UNIT.
- ENTRY DOORS TO BE 1-HR MASONITE IN TIMELY FRAMES.
- INTERIOR DOORS TO BE PRE-FINISH 3-PANEL MAPLE DOORS.
- NATURAL FINISH MAPLE "RANCH" BASE AND CASING.
- ALL DOOR HARDWARE TO MEET ICC/ANSI A117.1 Sec. 404.2.6 FOR OPERABILITY.
- CONTRACTOR TO PROVIDE ADEQUATE BLOCKING FOR ALL WALL HUNG VANITIES, REQUIRED GRAB BARS AND TOWEL BARS PER OWNER'S REQUIREMENTS.
- FIREBLOCKING SHALL BE PROVIDED IN CONCEALED SPACES BETWEEN STAR STRINGERS AT THE TOP AND BOTTOM OF EACH RUN.

**STRUCTURAL DATA**

A) FOOTING DESIGN:  
ROOF LOAD - 42' X 50# / S.F. = 2,100#  
2nd & 3rd FLOOR LOAD - 20' X 80# / S.F. X 2 = 2,400#  
WALL LOAD - 28' X 10# / FT. = 280#  
TOTAL LOAD = 4,780#  
FOOTING:  
2 S.F. X 3,000# / S.F. = 6,000# ALLOWABLE  
6,000# (ALLOW. LOAD) > 4,780# (ACTUAL LOAD)

B) UNTEL DESIGN:  
WORSE CASE - 1,400# / F.  
UNTEL DESIGN - (3) 12" TECH LAMS.  
FROM TABLE - 1,425# / FT. X 2 = 2,850#  
2,850# (ALLOW.) > 1,400# (ACTUAL)

C) FLOOR TRUSSES: (TRIM JOIST WOOD PRODUCTS)  
FROM TABLE - 28' FLOOR TRUSS @ 16" O.C. W/ 60# / S.F. LOAD  
ALLOWABLE SPAN 40' > 40' ACTUAL SPAN

D) ROOF TRUSSES: DESIGN BY REGISTERED WISCONSIN ENGINEER, W/ 40# LIVE LOAD, SIMPSON STC TRUSS CLIPS USED AS TRUSS FASTENERS

E) ANCHOR BOLTS: SIMPSON 1/2" STRONG BOLTS @ 4'-0" O.C.

F) WIND LOAD 7/8 SHEAR: (100 MPH WIND LOAD)  
P=0.04Y = .004(100 MPH) = 40# / S.F.  
SHEAR WALL / DIAPHRAGM FROM FROM TABLE - (2 X 6 WALL)  
7/8" SHEATHING, 1 1/2" FASTENER (1" PENETRATION),  
NAILING 6" O.C. EDGE  
ALLOWABLE LOAD - 165# / S.F. > 40# / S.F. ACTUAL  
MAX. LENGTH BETWEEN SHEAR WALLS - 28' < 35' ALLOW.

G) DWELLING UNIT FLOOR / CEILING ASSEMBLIES TO MEET  
UL DESIGN #542 - 1-HR RATING

H) DESIGN LOADS:  
- GROUND SNOW LOAD Pg - 40#/S.F.  
- EXPOSURE Cc - B  
- IMPORTANCE FACTOR I - 1  
- WIND SPEED - 90 MPH  
- FLOOR LOAD - 50#/S.F.

**CODE INFORMATION**

BUILDING TYPE:  
R2 - APARTMENT

CONSTRUCTION TYPE:  
VB - FULLY SPRINKLERED

BUILDING AREA AND HEIGHT:  
- ALLOWABLE - 2 STORIES, 7,000 SF / FLOOR  
- ACTUAL - 3 STORIES, 13,104 SF / FLOOR  
- 200% INCREASE W/ NFPA 13 SPRINKLER

TRAVEL DISTANCE TO EXIT:  
- 250' WITH SPRINKLER

NUMBER OF EXITS:  
- MINIMUM 2 REQUIRED  
- 2 EXITS PROVIDED

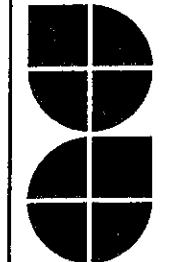
EXIT WIDTH:  
- 0.2' PER OCCUPANT - 72" ACTUAL

FIRE-RESISTANCE RATINGS:  
- IBC TABLE 601 - TYPE VB CONSTRUCTION - 0-HR.

FIRE SEPARATION DISTANCE:  
- IBC TABLE 602 - TYPE VB CONSTRUCTION  
- 5' ≤ X < 10' - 1-HR.  
- 10' ≤ X < 30' - 0-HR.

MAXIMUM AREA OF EXTERIOR WALL OPENINGS:  
- IBC TABLE 705.8  
- ALLOWABLE - 25' TO LESS 30'  
- PROTECTED / NO UNIT

ARCHITECTURAL DESIGN  
2809 S. Losey Blvd.  
La Crosse, WI 54601  
Ph.: 608-785-1750  
Fax: 608-785-1751

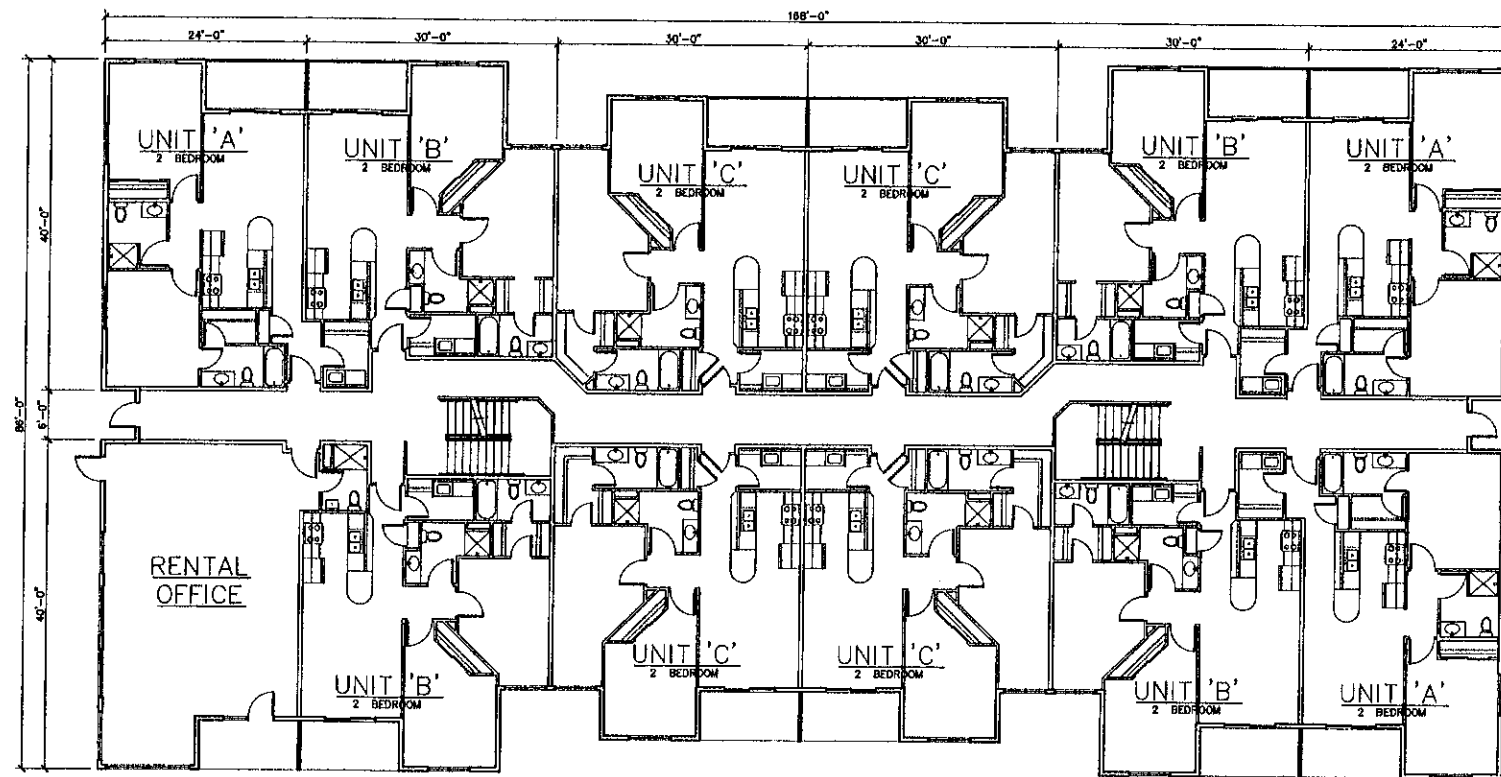


SITE PLAN  
LANDSCAPE & EROSION PLAN  
SITE LIGHTING

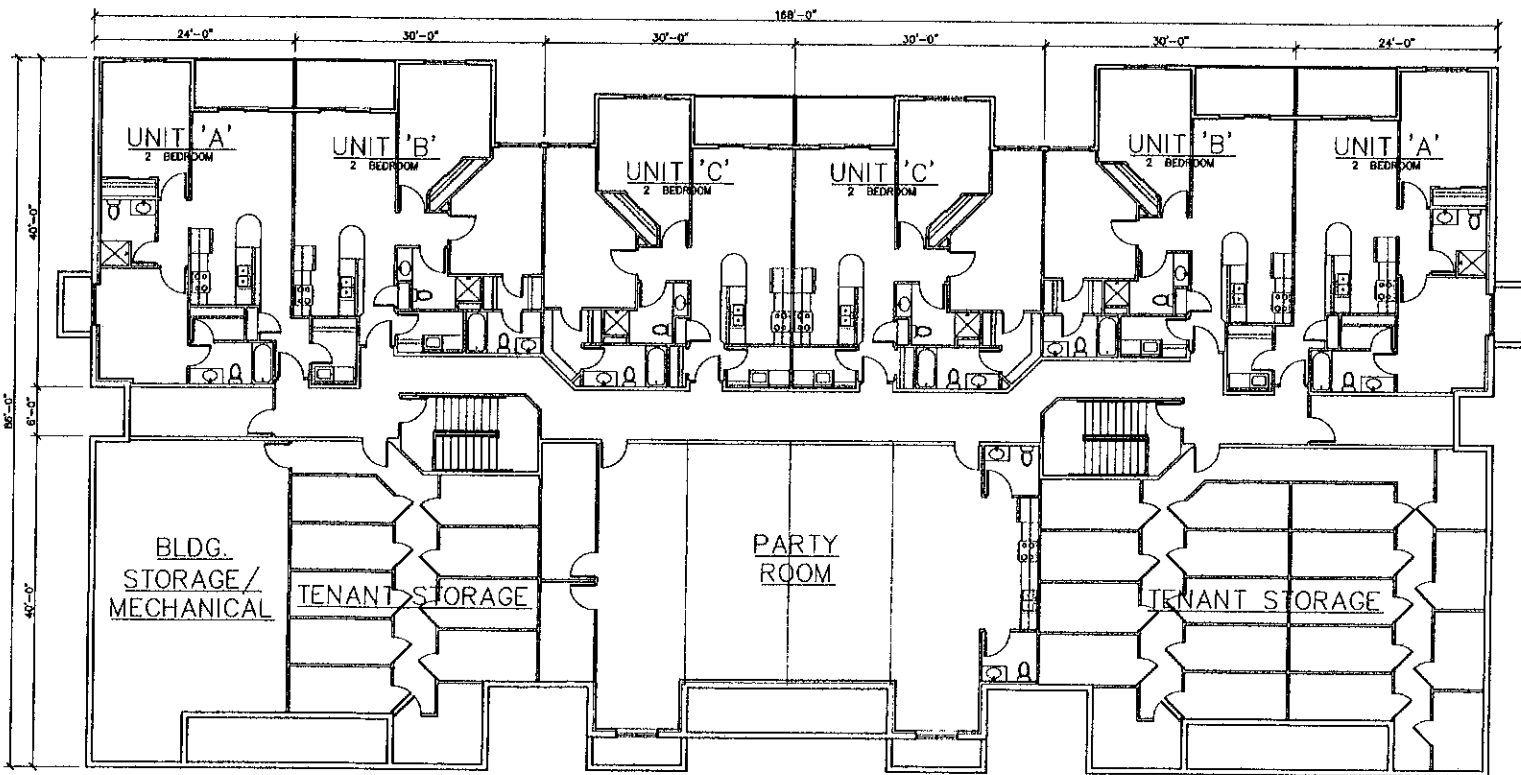
Date: 01.05.17  
Drawn by: KKT  
Checked by: GK  
Revisions:

29 UNIT APARTMENT COMPLEX  
ROUSH RENTALS  
7th & LA CROSSE ST.  
LA CROSSE, WI

C1



2 FIRST & SECOND FLOOR PLAN  
 3/32" = 1'-0"



1 LOWER FLOOR PLAN  
 3/32" = 1'-0"



ARCHITECTURAL DESIGN

2809 S. Losey Blvd.  
 La Crosse, WI 54601  
 Ph.: 608-785-1750  
 Fax: 608-785-1751



FLOOR PLANS

Date: 01.05.17

Drawn by: KKT

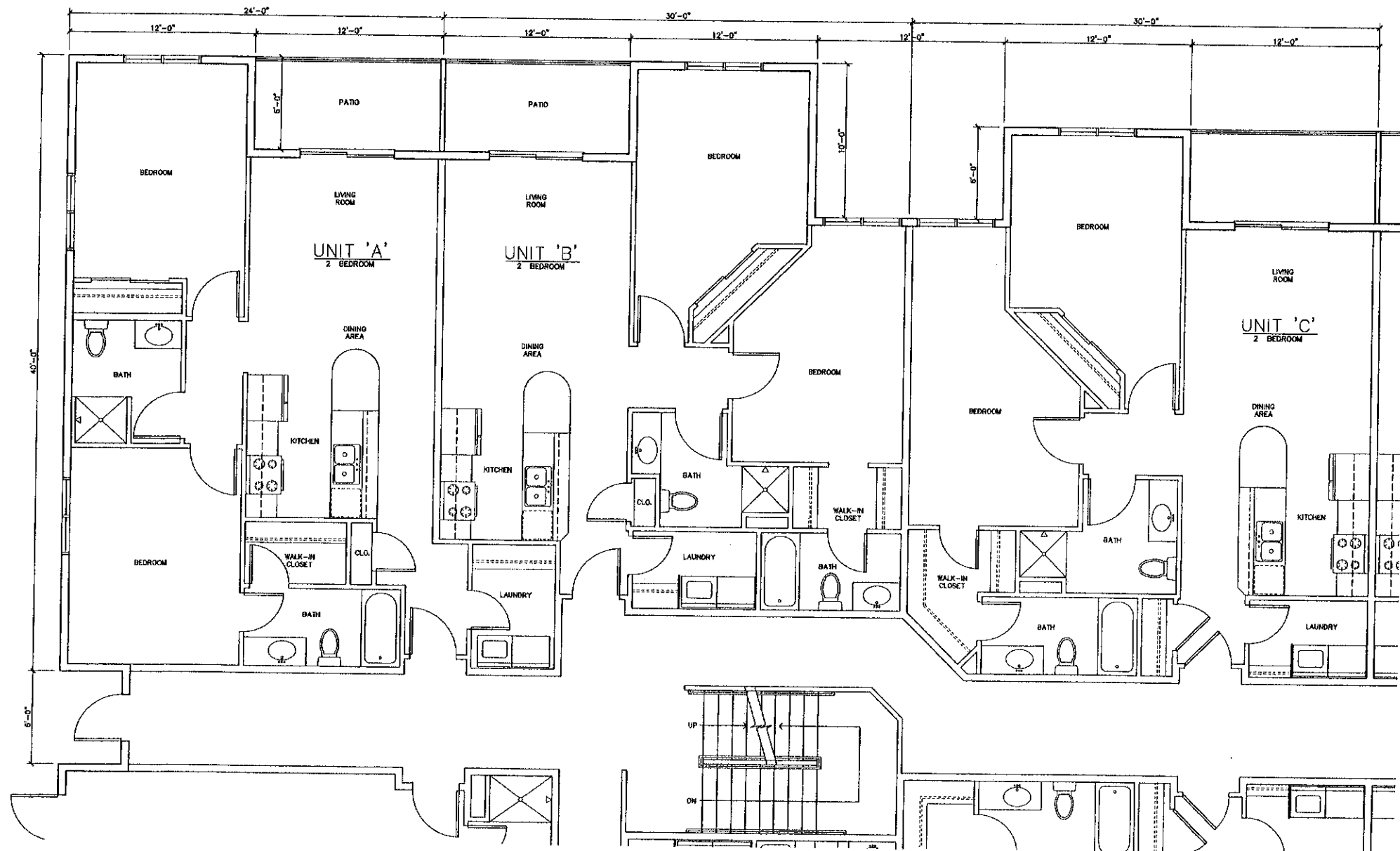
Checked by: OK

Revisions:

29 UNIT  
 APARTMENT  
 COMPLEX

ROUSH  
 RENTALS  
 7th & LA CROSSE ST.  
 LA CROSSE, WI

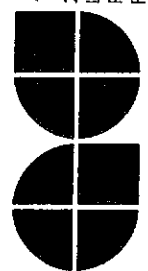
A1



1  
A2 ENLARGED UNIT PLANS  
1/4" = 1'-0"



ARCHITECTURAL DESIGN



2809 S. Losey Blvd.  
La Crosse, WI 54601  
Ph.: 608-785-1750  
Fax: 608-785-1751

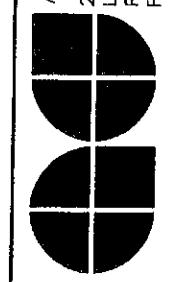
ENLARGED UNIT PLANS

Date : 01.05.17  
Drawn by : KKT  
Checked by : GK  
Revisions :

29 UNIT  
APARTMENT  
COMPLEX

ROUSH  
RENTALS  
7th & LA CROSSE ST.  
LA CROSSE, WI

A2

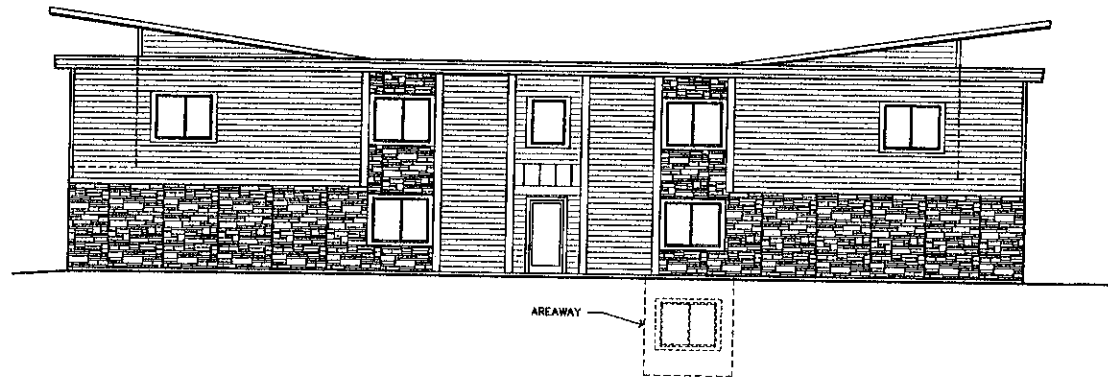


EXTERIOR ELEVATIONS

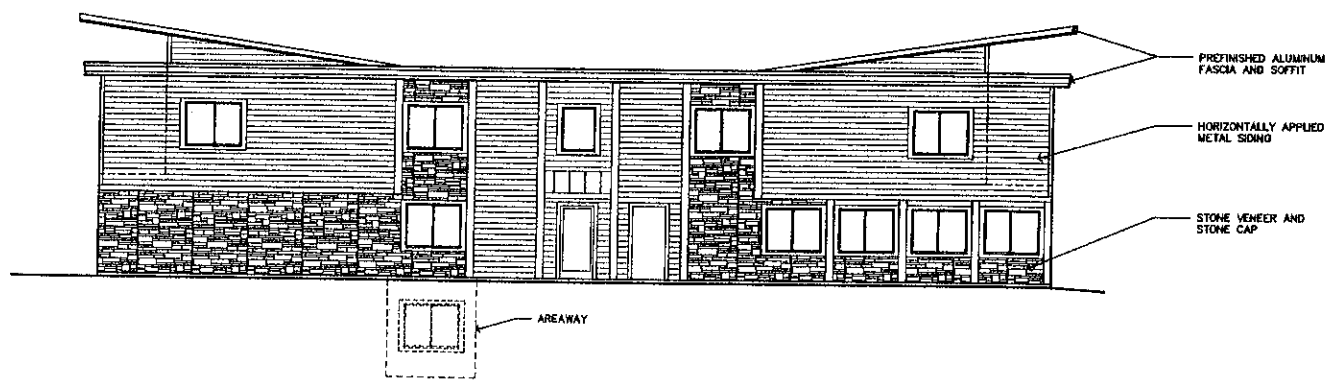
Date :	12.16.16
Drawn by :	KKT
Checked by :	GK
Revisions :	

29 UNIT  
 APARTMENT  
 COMPLEX  
 ROUSH  
 RENTALS  
 7th & LA CROSSE ST.  
 LA CROSSE, WI

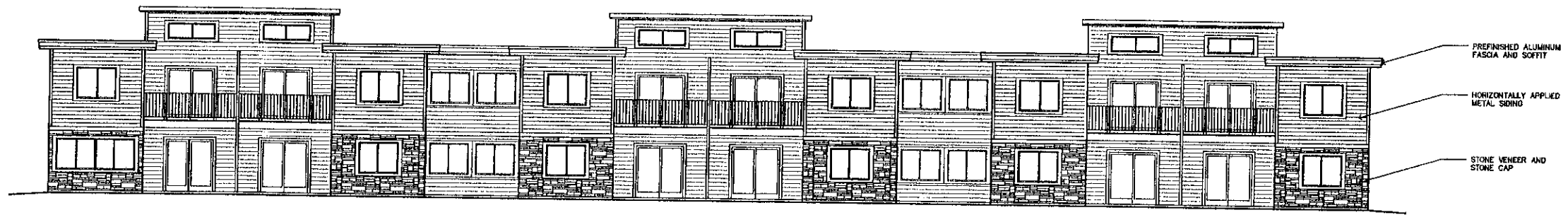
A3



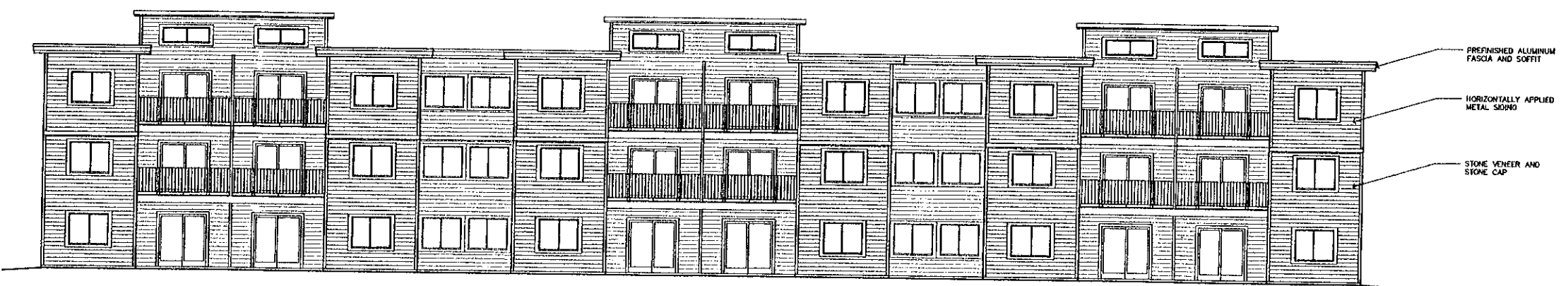
3 EAST EXTERIOR ELEVATION  
 A3 1/8" = 1'-0"



4 WEST EXTERIOR ELEVATION  
 A3 1/8" = 1'-0"



2 SOUTH EXTERIOR ELEVATION  
 A3 1/8" = 1'-0"



1 NORTH EXTERIOR ELEVATION  
 A3 1/8" = 1'-0"

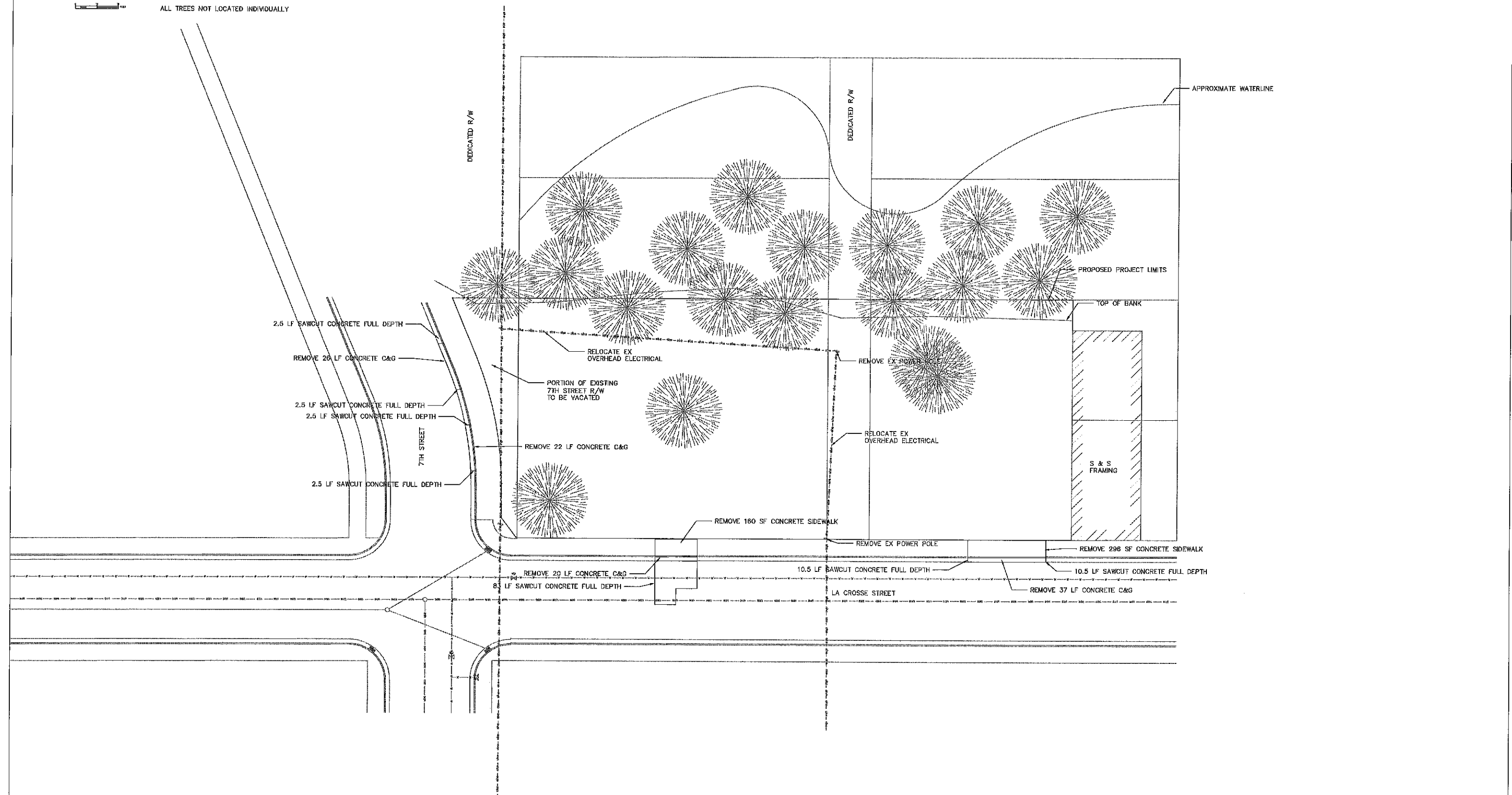


NOTES:  
 PERVIOUS: 31,846 SF  
 TOTAL: 31,846 SF

REMOVE ALL TREES & BRUSH WITHIN PROJECT LIMITS  
 ALL TREES NOT LOCATED INDIVIDUALLY



LA CROSSE RIVER MARSH



816 2ND AV S  
 SUITE 800  
 ONALASKA, WI 54650  
 608.797.1025

29 UNIT APARTMENT COMPLEX  
 ROUSH RENTALS  
 7TH & LA CROSSE ST  
 LA CROSSE, WI

01/06/2017

EXISTING SITE

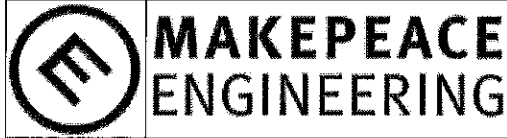
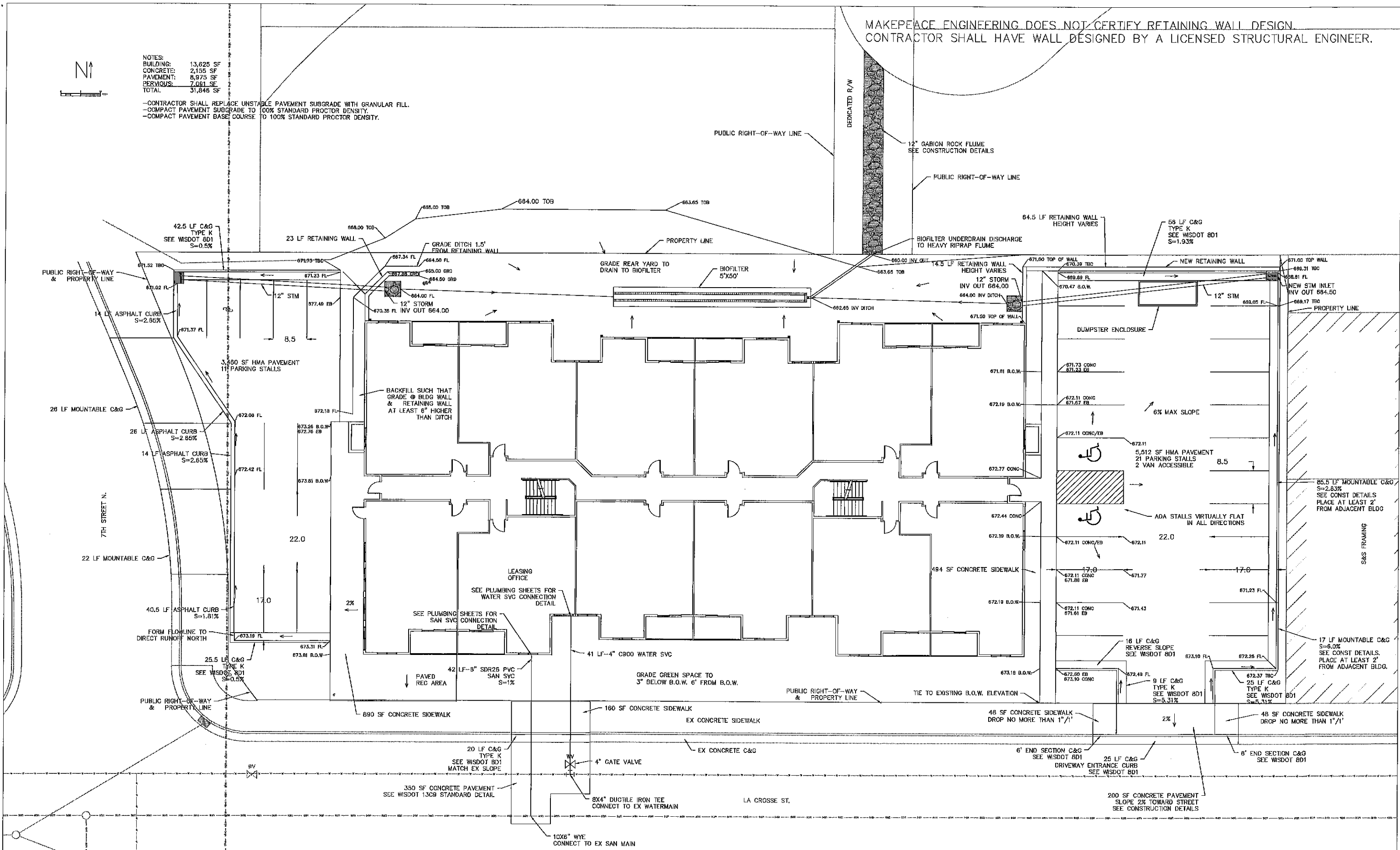
DATE	REVISION	DESCR.

C100

MAKEPEACE ENGINEERING DOES NOT CERTIFY RETAINING WALL DESIGN.  
CONTRACTOR SHALL HAVE WALL DESIGNED BY A LICENSED STRUCTURAL ENGINEER.

NOTES:  
BUILDING: 13,825 SF  
CONCRETE: 2,135 SF  
PAVEMENT: 8,975 SF  
PERVIOUS: 7,081 SF  
TOTAL: 31,846 SF

-CONTRACTOR SHALL REPLACE UNSTABLE PAVEMENT SUBGRADE WITH GRANULAR FILL.  
-COMPACT PAVEMENT SUBGRADE TO 100% STANDARD PROCTOR DENSITY.  
-COMPACT PAVEMENT BASE COURSE TO 100% STANDARD PROCTOR DENSITY.



816 2ND AV S  
SUITE 800  
ONALASKA, WI 54650  
608.797.1025

29 UNIT APARTMENT COMPLEX  
ROUSH RENTALS  
7TH & LA CROSSE ST  
LA CROSSE, WI

01/06/2017

PROPOSED SITE

DATE	REVISION	DESCR.	
			C101

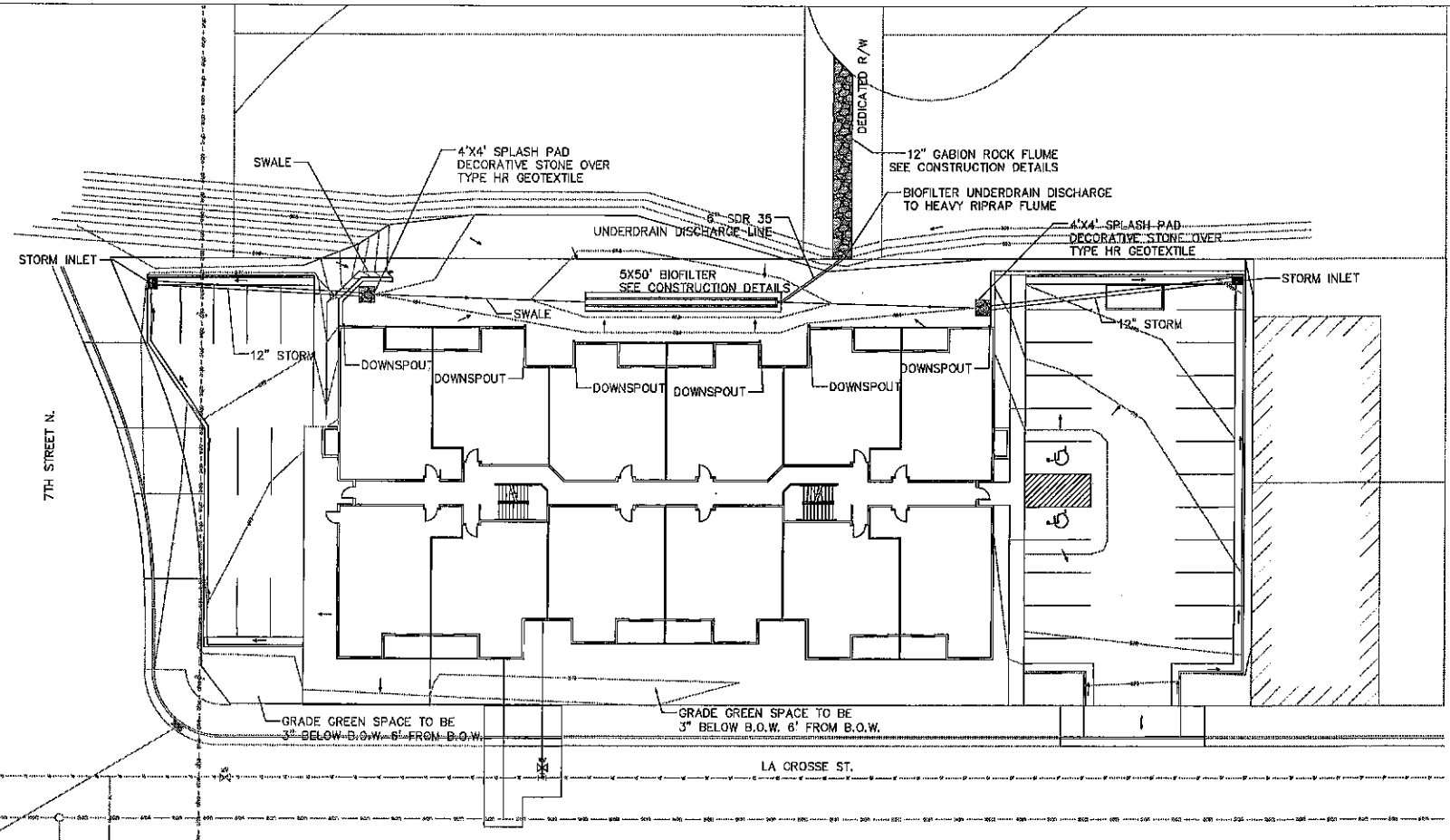
**POST-CONSTRUCTION STORM WATER MANAGEMENT**

**POST-CONSTRUCTION STORM WATER NOTES:**

1. CONSTRUCT BIOFILTER IN ACCORDANCE W/ WDNR TECHNICAL STANDARD 1004 & STORM WATER MANAGEMENT & EROSION CONTROL PLAN NARRATIVE.
2. CONTRACTOR SHALL SUBMIT PLANT SELECTION TO OWNER FOR APPROVAL.
3. CONTRACTOR SHALL SUPPLY ROOTSTOCK & PLUGS OF SELECTED PLANTS.
4. PLANTS SHALL BE NATIVE TO THE AREA AND CAPABLE OF WITHSTANDING THE ENVIRONMENTAL CONDITIONS OF THE BIOFILTER, SUCH AS INSECT AND DISEASE INFESTATIONS, DROUGHT, WATER LEVEL FLUCTUATIONS AND REGIONAL TEMPERATURE VARIATIONS.
5. SELECTED PLANTS SHALL HAVE ROOT SYSTEMS SUITABLE FOR BIOFILTER ENGINEERED SOIL DEPTH.
6. TURF GRASS MAY NOT BE USED.
7. WOODY VEGETATION MAY NOT BE USED AT INFLOW LOCATIONS.
8. PLANTING CONCENTRATION SHALL BE 1' ON CENTER UNLESS SPECIFIC PLANT REQUIREMENTS DICTATE OTHERWISE.

CONTRIBUTORY AREAS:

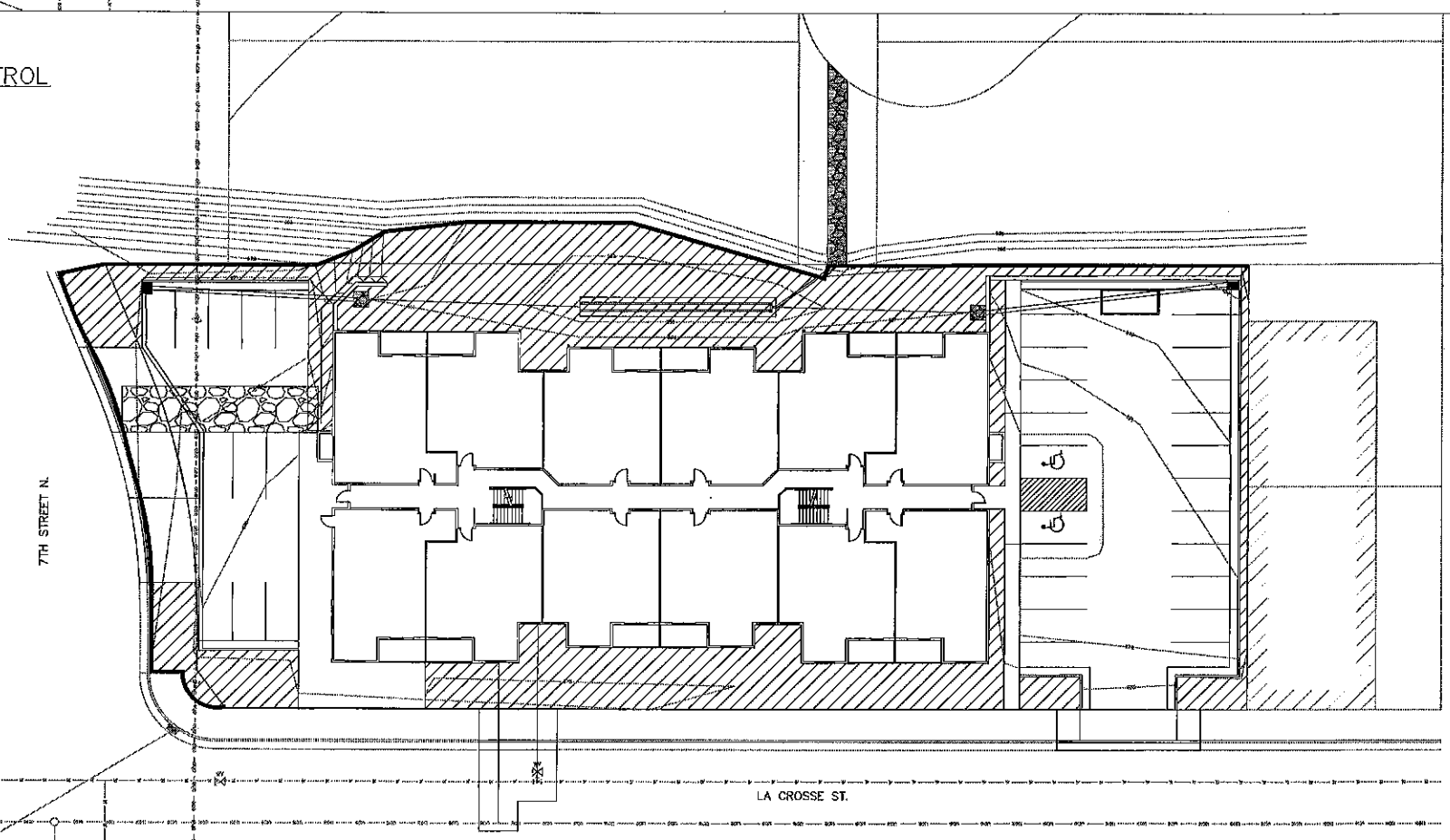
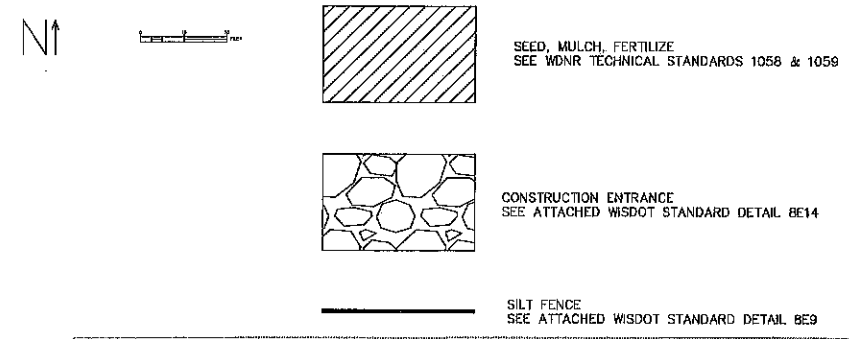
BUILDING:	13,625 SF
CONCRETE:	2,155 SF
PAVEMENT:	8,975 SF
PERVIOUS:	7,091 SF
TOTAL:	31,846 SF



**EROSION CONTROL**

**EROSION CONTROL NOTES:**

1. THIS EROSION CONTROL PLAN HAS BEEN PREPARED AS A GUIDE. ADDITIONAL EROSION CONTROL MEASURES MAY BE REQUIRED. CONTRACTOR SHALL MAINTAIN, MODIFY, AND IMPLEMENT AN ALTERNATE EROSION CONTROL PLAN BASED ON THEIR MEANS, METHODS, TECHNIQUES, SEQUENCES, AND PROCEDURES OF CONSTRUCTION.
2. EROSION CONTROL CONSTRUCTION & SEQUENCING SHALL BE IN ACCORDANCE WITH STORM WATER MANAGEMENT & EROSION CONTROL PLAN NARRATIVE.
3. EROSION CONTROL MEASURES SHALL BE MAINTAINED UNTIL 100% VEGETATION IS ESTABLISHED.
4. CONTRACTOR SHALL COORDINATE WEEKLY BMP INSPECTION REPORTS, AND AFTER ALL RAIN EVENTS 0.5" OR LARGER IN ANY 24-HOUR PERIOD.
5. ADJACENT STREETS AND ROADWAYS SHALL BE SWEEPED TO KEEP THEM FREE OF SEDIMENT. CONTRACTOR SHALL MONITOR CONDITIONS AND SWEEP AS NEEDED OR WITHIN 24 HOURS OF NOTICE BY CITY OF LA CROSSE.
6. ALL DISTURBED GROUND LEFT INACTIVE FOR 14 OR MORE DAYS MUST BE STABILIZED BY SEEDING, MULCH, OR SODDING.
7. CONTRACTOR SHALL ADJUST THE APPROPRIATE STRUCTURAL AND NON-STRUCTURAL BMP'S BASED ON CONSTRUCTION PROGRESS. ADJUSTMENT SHALL BE BASED ON EROSION CONTROL PERMIT REQUIREMENTS. BMP'S SHALL BE INSTALLED AND MAINTAINED ACCORDING TO WDNR TECHNICAL STANDARDS.
8. CONTRACTOR SHALL PROVIDE APPROPRIATE PLANNING AND MEASURES TO PREVENT POLLUTION FROM CONSTRUCTION SITE OPERATIONS INCLUDING BUT NOT LIMITED TO MATERIALS, STAGING, WASTE, WASHOUT AREAS, EQUIPMENT FUELING AND MAINTENANCE, AND SPILL PREVENTION AND CONTROL.
9. ALL SLOPES STEEPER THAN 3H:1V SHALL HAVE EMAT MEETING WISDOT PALS LIST.
10. A COPY OF THIS EROSION CONTROL PLAN SHALL BE KEPT ON-SITE DURING ALL LAND-DISTURBING CONSTRUCTION ACTIVITIES.



816 2ND AV S  
SUITE 800  
ONALASKA, WI  
608.797.1025

29 UNIT APARTMENT COMPLEX  
ROUSH RENTALS  
7TH & LA CROSSE ST  
LA CROSSE, WI

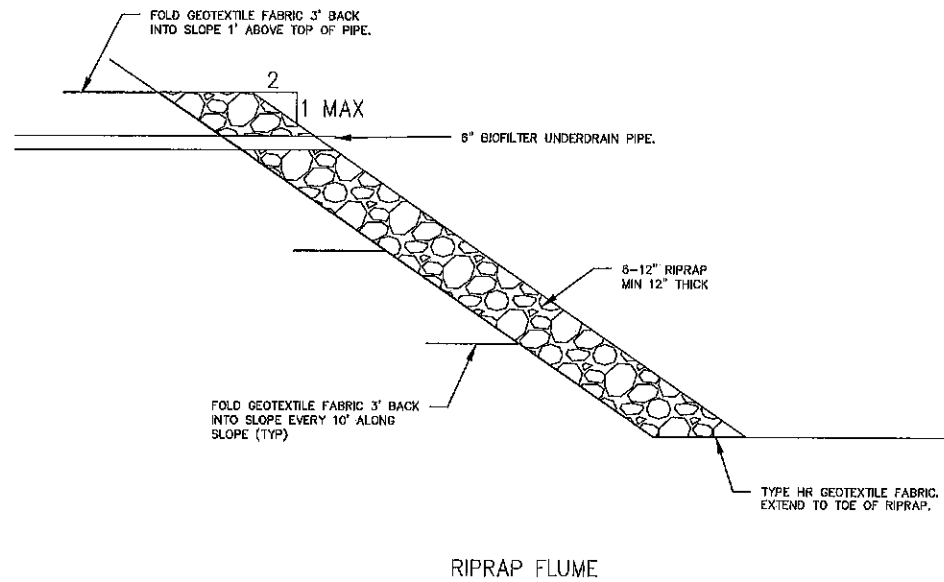
01/06/2017

**STORM WATER PLAN**

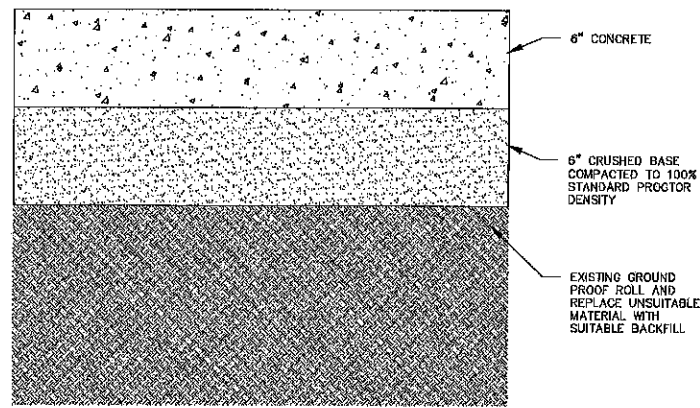
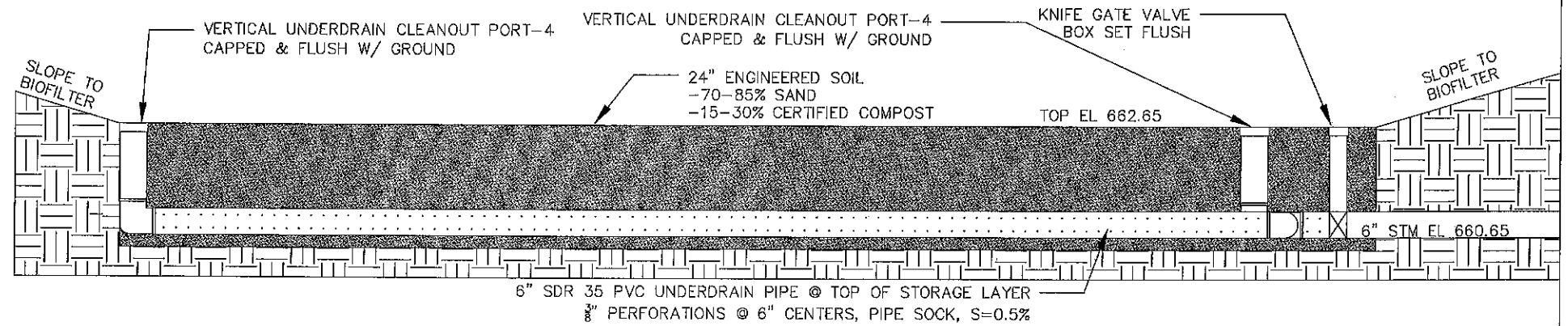
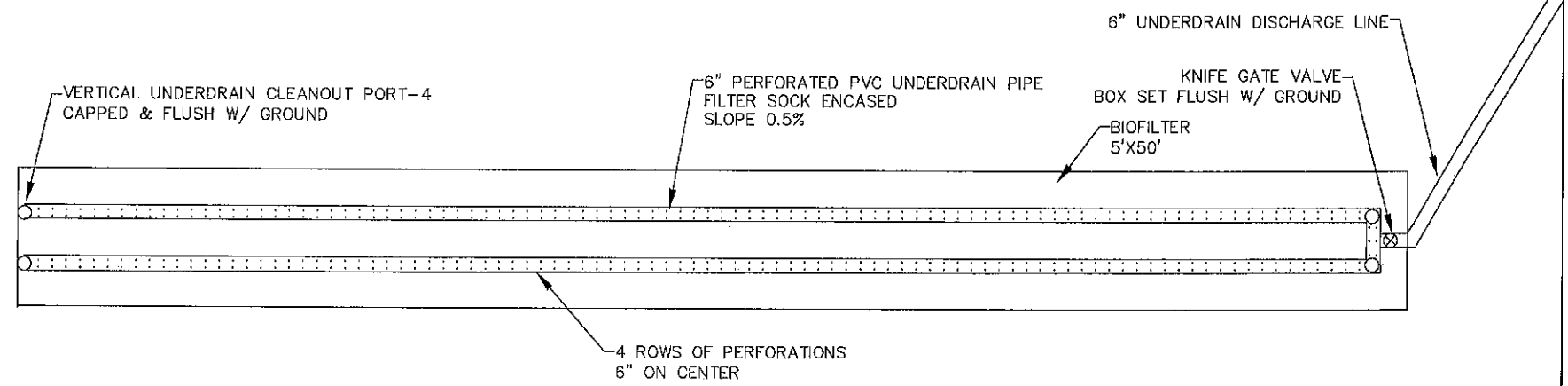
DATE	REVISION	DESCR.

C102

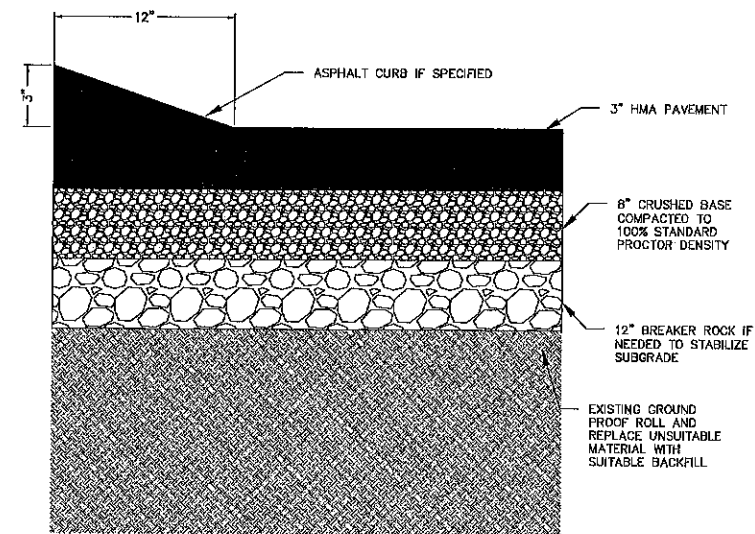




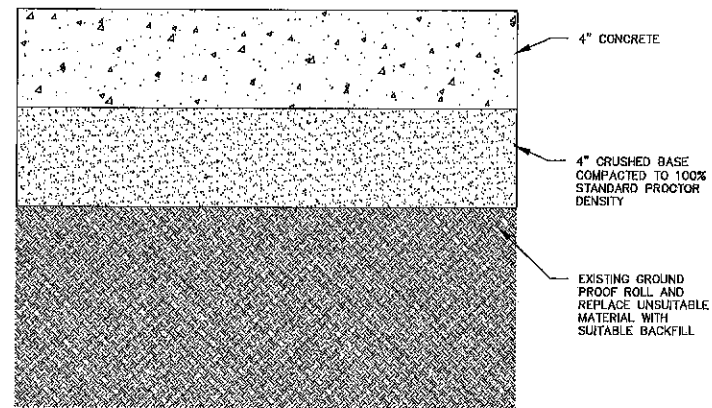
RIPRAP FLUME



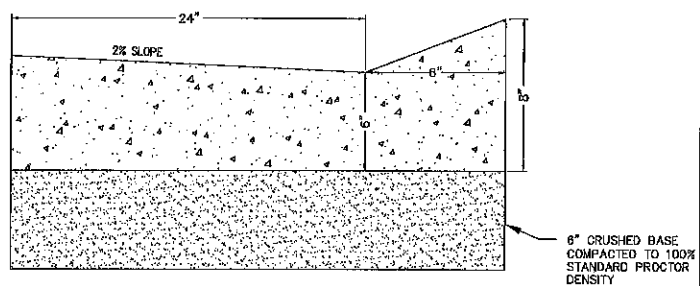
CONCRETE PAVEMENT



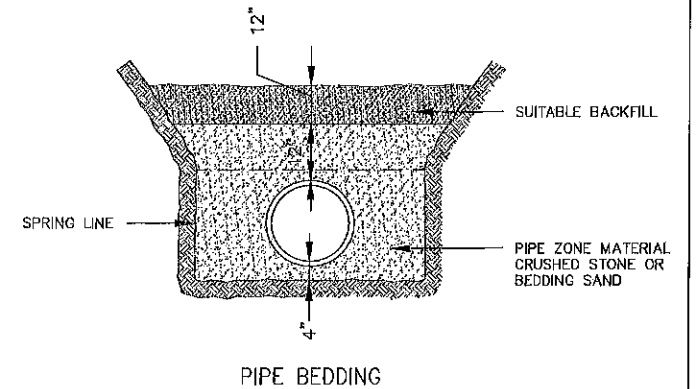
ASPHALT PAVEMENT



CONCRETE SIDEWALK



MOUNTABLE CURB & GUTTER



PIPE BEDDING



**MAKEPEACE  
ENGINEERING**

816 2ND AV S  
SUITE 800  
ONALASKA, WI 54650  
608.797.1025

29 UNIT APARTMENT COMPLEX  
ROUSH RENTALS  
7TH & LA CROSSE ST  
LA CROSSE, WI

01/06/2017

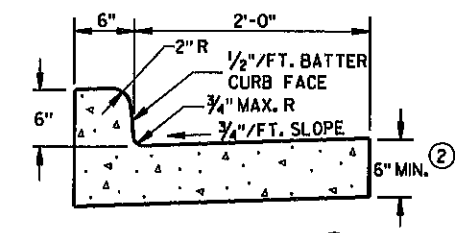
CONSTRUCTION DETAILS

DATE	REVISION	DESCR.

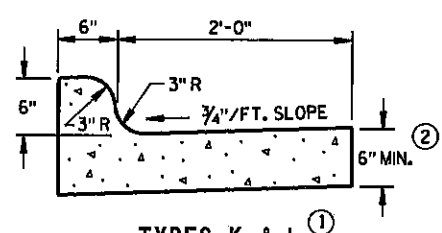
C103



# 8D1: Concrete Curb, Concrete Curb & Gutter and Ties

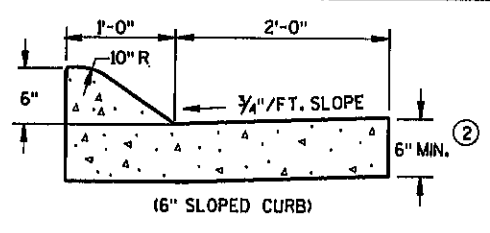


TYPES A & D ①

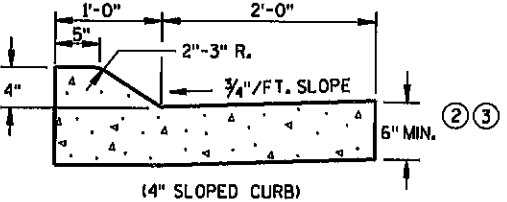


TYPES K & L ①

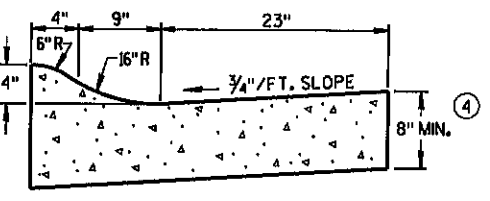
OPTIONAL CURB SHAPE FOR TYPES K & L ①



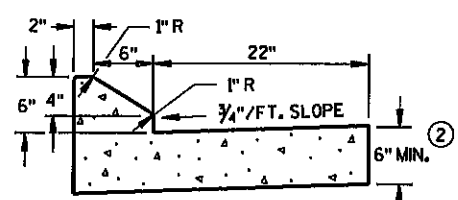
(6" SLOPED CURB)



(4" SLOPED CURB) TYPES A & D ①

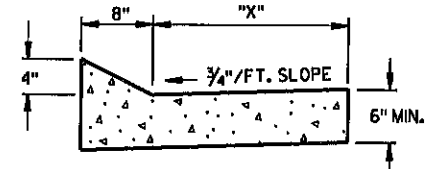


4" SLOPED CURB TYPES R & T ① ⑤  
CONCRETE CURB & GUTTER 36"



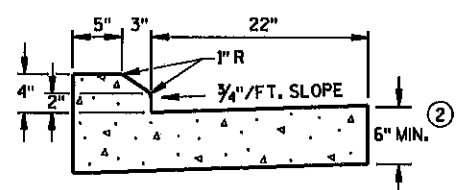
6" SLOPED CURB TYPES G & J ①

CONCRETE CURB & GUTTER 30"



TYPES TBT & TBTT ①  
CONCRETE CURB & GUTTER

TBT & TBTT	"X"
30"	22"
36"	28"

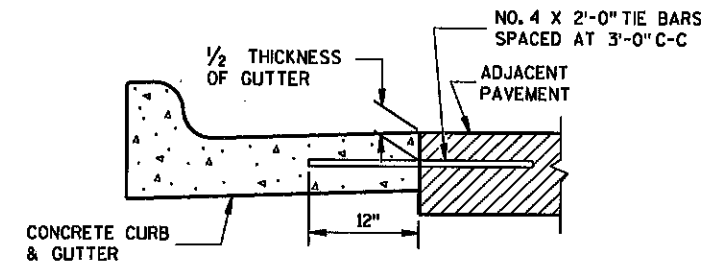


4" SLOPED CURB TYPES G & J ①

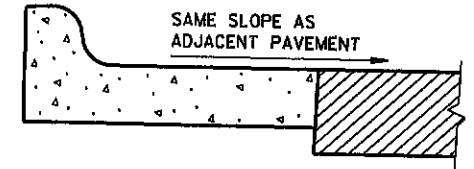
CONCRETE CURB & GUTTER 30"

## GENERAL NOTES

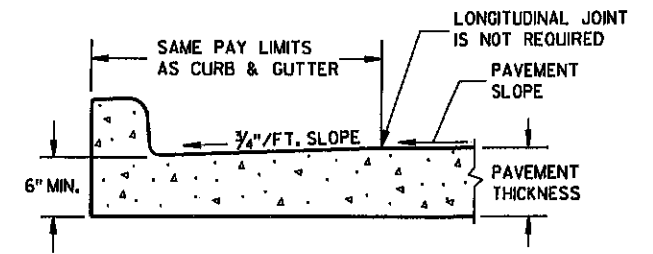
- DETAILS OF CONSTRUCTION, MATERIALS AND WORKMANSHIP NOT SHOWN ON THIS DRAWING SHALL CONFORM TO THE PERTINENT REQUIREMENTS OF THE CONTRACT.
- PAVEMENT TIES AND TIE BARS SHALL BE EPOXY COATED IN CONFORMANCE WITH SUBSECTION 505.2.6.2 OF THE STANDARD SPECIFICATIONS.
- INTEGRAL CURB & GUTTER SHALL CONFORM TO THE DETAILS SHOWN FOR CONCRETE CURB & GUTTER INCLUDING THE TRANSVERSE GUTTER SLOPE. A LONGITUDINAL CONSTRUCTION JOINT IS NOT REQUIRED WITH INTEGRAL CURB AND GUTTER.
- WHERE THE TRANSVERSE JOINTS IN THE PAVEMENT ARE REQUIRED TO BE SEALED, THE JOINTS IN THE INTEGRAL CURB AND GUTTER SHALL BE SEALED TO THE FACE OF CURB WITH THE SAME TYPE OF SEALANT. THE COST OF FURNISHING AND INSTALLING THIS SEALANT SHALL BE INCIDENTAL TO THE ITEM CONCRETE CURB AND GUTTER.
- UNLESS OTHERWISE SHOWN ON THE TYPICAL CROSS SECTIONS, THE BASE AGGREGATE AND COMMON EXCAVATION LIMITS ARE 2'-0" BEHIND THE BACK OF CURBS.
- ① TIE BARS ARE REQUIRED FOR CURB AND GUTTER TYPES A, G, K, R AND TBTT.
  - ② THE BOTTOM OF CURB AND GUTTER MAY BE CONSTRUCTED EITHER LEVEL OR PARALLEL TO THE SLOPE OF THE SUBGRADE OR BASE AGGREGATE PROVIDED A 6" MINIMUM GUTTER THICKNESS IS MAINTAINED.
  - ③ USE 8" MINIMUM GUTTER THICKNESS WHEN USED WITH AN ADJACENT CONCRETE TRUCK APRON PLACED BEHIND BACK OF CURB.
  - ④ THE BOTTOM OF CURB AND GUTTER MAY BE CONSTRUCTED EITHER LEVEL OR PARALLEL TO THE SLOPE OF THE SUBGRADE OR BASE AGGREGATE PROVIDED A 8" MINIMUM GUTTER THICKNESS IS MAINTAINED.
  - ⑤ THE FACE OF CURB IS 6" FROM THE BACK OF CURB.
  - ⑥ WHEN REVERSE SLOPE GUTTER IS REQUIRED, THE LOCATION(S) WILL BE SHOWN ELSEWHERE IN THE PLAN.



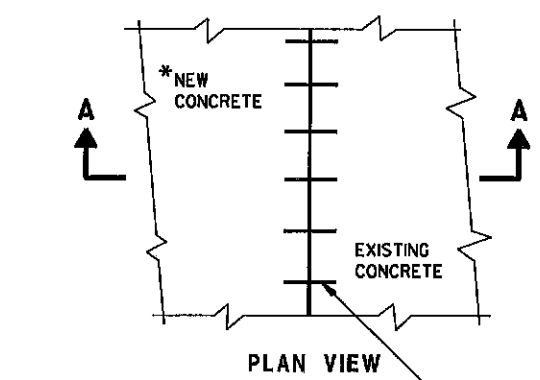
TYPICAL TIE BAR LOCATION ①



REVERSE SLOPE GUTTER (TYPICAL FOR ALL CURB & GUTTER TYPES) ⑥

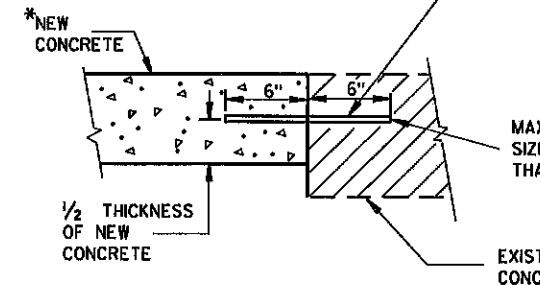


PARTIAL SECTION OF PAVEMENT WITH INTEGRAL CURB & GUTTER



PLAN VIEW

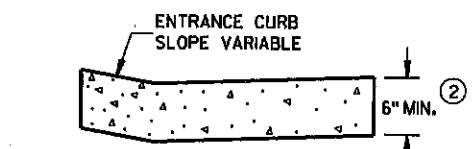
\*NEW CURB & GUTTER, SURFACE DRAINS, CONCRETE PAVEMENT OR OTHER NEW CONCRETE.



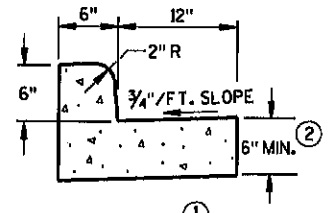
SECTION A-A  
TIE BARS DRILLED INTO EXISTING PAVEMENT

NO. 6 TIE BARS SPACED 2'-6" C-C, INSTALLED PERPENDICULAR TO THE LONGITUDINAL JOINT.

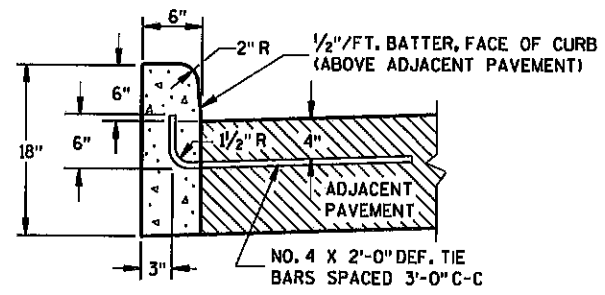
MAXIMUM DRILL HOLE SIZE IS 1/8" GREATER THAN TIE BAR DIAMETER



DRIVEWAY ENTRANCE CURB (WHEN DIRECTED BY THE ENGINEER) ②

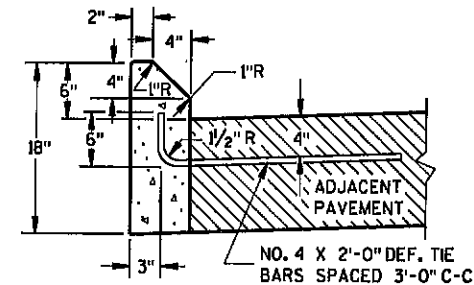


TYPES A & D  
CONCRETE CURB & GUTTER 18"

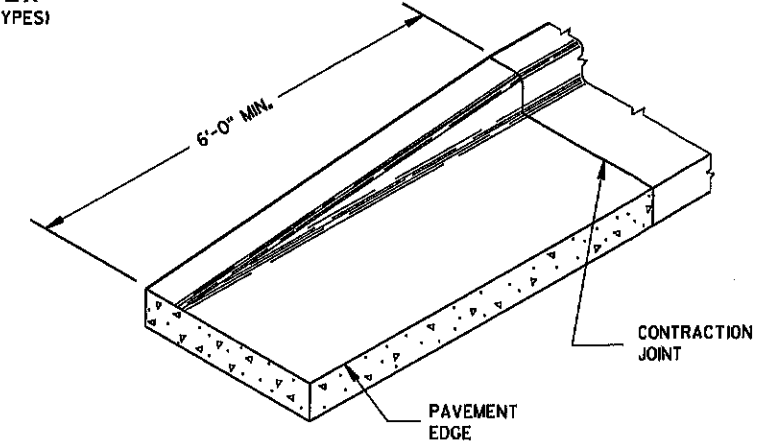


TYPES A & D ①

CONCRETE CURB



TYPES G & J ①



END SECTION CURB & GUTTER

CONCRETE CURB, CONCRETE CURB & GUTTER AND TIES

STATE OF WISCONSIN  
DEPARTMENT OF TRANSPORTATION

APPROVED  
June, 2016 /S/ Jerry H. Zogg  
DATE ROADWAY STANDARDS DEVELOPMENT  
ENGINEER  
FHWA

**References:**  
EDM 11-20-1

**Bid items associated with this drawing:**

<u>ITEM NUMBER</u>	<u>DESCRIPTION</u>	<u>UNIT</u>
416.0610	Drilled Ties Bars.....	EACH
601.0105	Concrete Curb Type A.....	LF
601.0110	Concrete Curb Type D.....	LF
601.0115	Concrete Curb Type G.....	LF
601.0120	Concrete Curb Type J.....	LF
601.0150	Concrete Curb Integral Type D.....	LF
601.0155	Concrete Curb Integral Type J.....	LF
601.0405	Concrete Curb & Gutter 18-Inch Type A.....	LF
601.0407	Concrete Curb & Gutter 18-Inch Type D.....	LF
601.0409	Concrete Curb & Gutter 30-Inch Type A.....	LF
601.0411	Concrete Curb & Gutter 30-Inch Type D.....	LF
601.0413	Concrete Curb & Gutter 6-Inch Sloped 30-Inch Type G.....	LF
601.0415	Concrete Curb & Gutter 6-Inch Sloped 30-Inch Type J.....	LF
601.0417	Concrete Curb & Gutter 30-Inch Type K.....	LF
601.0419	Concrete Curb & Gutter 30-Inch Type L.....	LF
601.0452	Concrete Curb & Gutter Integral 30-Inch Type D.....	LF
601.0454	Concrete Curb & Gutter Integral 30-Inch Type J.....	LF
601.0456	Concrete Curb & Gutter Integral 30-Inch Type L.....	LF
601.0501	Concrete Curb & Gutter Integral 4-Inch Sloped 36-Inch.....	LF
601.0511	Concrete Curb & Gutter Integral 6-Inch Sloped 36-Inch.....	LF
601.0551	Concrete Curb & Gutter 4-Inch Sloped 36-Inch Type A.....	LF
601.0553	Concrete Curb & Gutter 4-Inch Sloped 36-Inch Type D.....	LF
601.0555	Concrete Curb & Gutter 6-Inch Sloped 36-Inch Type A.....	LF
601.0557	Concrete Curb & Gutter 6-Inch Sloped 36-Inch Type D.....	LF
601.0574	Concrete Curb & Gutter 4-Inch Sloped 30-Inch Type G.....	LF
601.0576	Concrete Curb & Gutter 4-Inch Sloped 30-Inch Type J.....	LF
601.0580	Concrete Curb & Gutter 4-Inch Sloped 36-Inch Type R.....	LF
601.0582	Concrete Curb & Gutter 4-Inch Sloped 36-Inch Type T.....	LF
601.0584	Concrete Curb & Gutter 4-Inch Sloped 30-Inch Type TBT.....	LF
601.0586	Concrete Curb & Gutter 4-Inch Sloped 30-Inch Type TBTT.....	LF
601.0588	Concrete Curb & Gutter 4-Inch Sloped 36-Inch Type TBT.....	LF
601.0590	Concrete Curb & Gutter 4-Inch Sloped 36-Inch Type TBTT.....	LF

**Standardized Special Provisions associated with this drawing:**

STSP NUMBER TITLE  
 NONE

**Other SDDs associated with this drawing:**

NONE

**Design Notes:**

- Any special curb or gutter, different from those listed above, requires a SPV.0900 item number, special provision and special detail.
- List in miscellaneous quantities all curb and gutter types along with STA-STA limits LT and RT. Label typical finished sections with curb and gutter types. Indicate on plan sheets where reverse slope gutter is required.
- Any required modification to the standard 3/4" gutter slope will need to be addressed in a plan general note or by including a special detail. When modifying the gutter cross slope, adjust that inlet spacing per EDM 13-25-15.
- The face of curb for the Type R and T is 6-inches from the back of curb.
- Use the end section curb & gutter at railroad crossings where curb & gutter is present and at driveways where the sidewalk is adjacent to the back of curb.

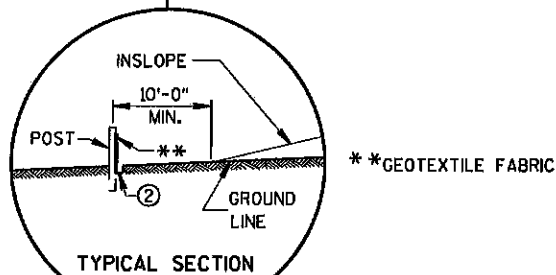
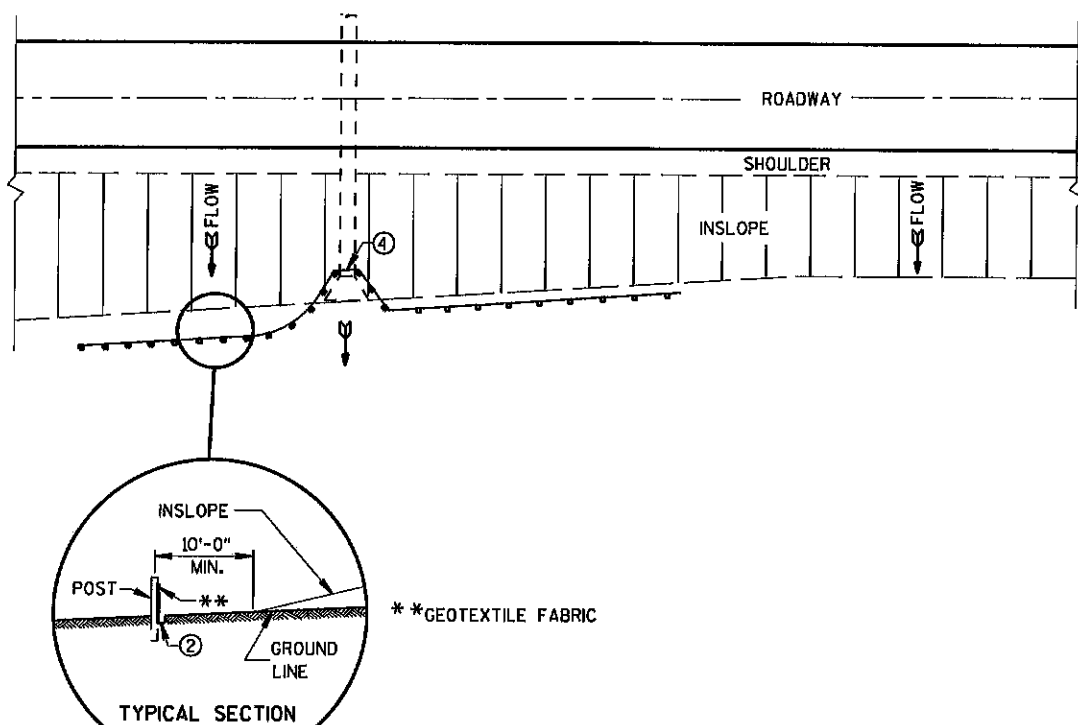
Curb and gutter Type TBT (Thrie Beam Transition) and TBTT (Thrie Beam Transition Tied) can be used with thrie beam transitions to control water by the thrie beam transition. See the Thrie Beam Transition SDDs for more information. In some cases, TBT and TBTT are required for proper performance of the thrie beam transition.

**Note:**

Do not use this SDD for items 601.0199.s Concrete Curb Precast or 465.0310 Asphaltic Curb. Always include a special detail in the plan for these items. (See CADDs cell 9 or 10 in file CDCRBFTR.CEL and modify titles to match that of item 465.0310.)

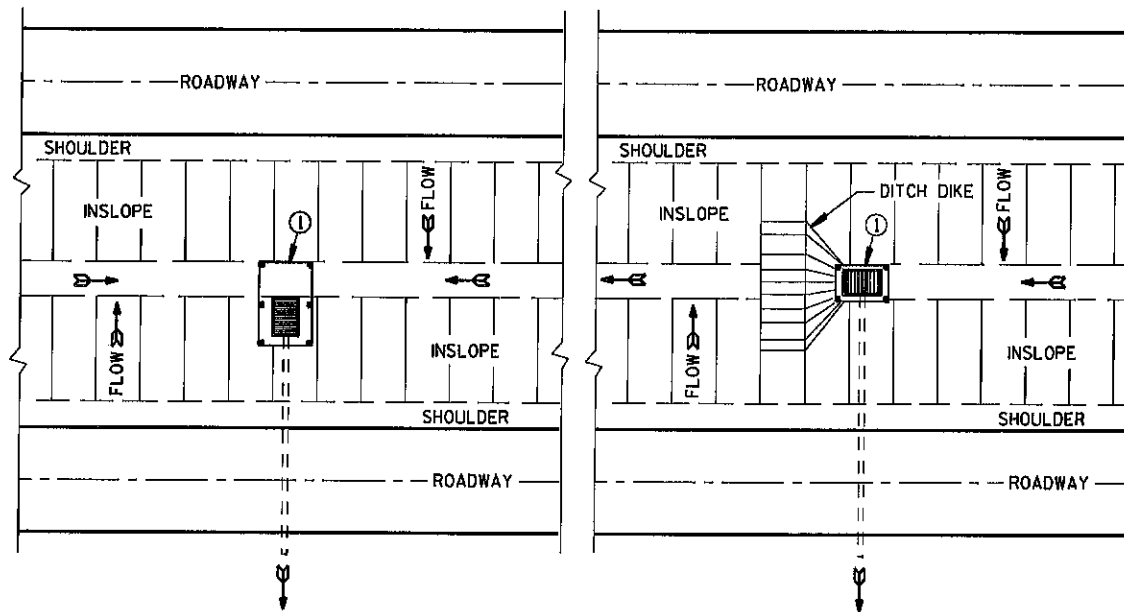
**Contact Person:**

Paul Vraney (608) 266-8486



PLAN VIEW

TYPICAL APPLICATION OF SILT FENCE



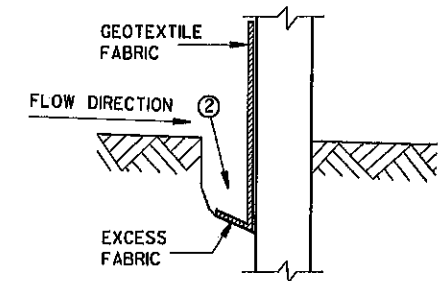
PLAN VIEW

SILT FENCE AT MEDIAN SURFACE DRAINS

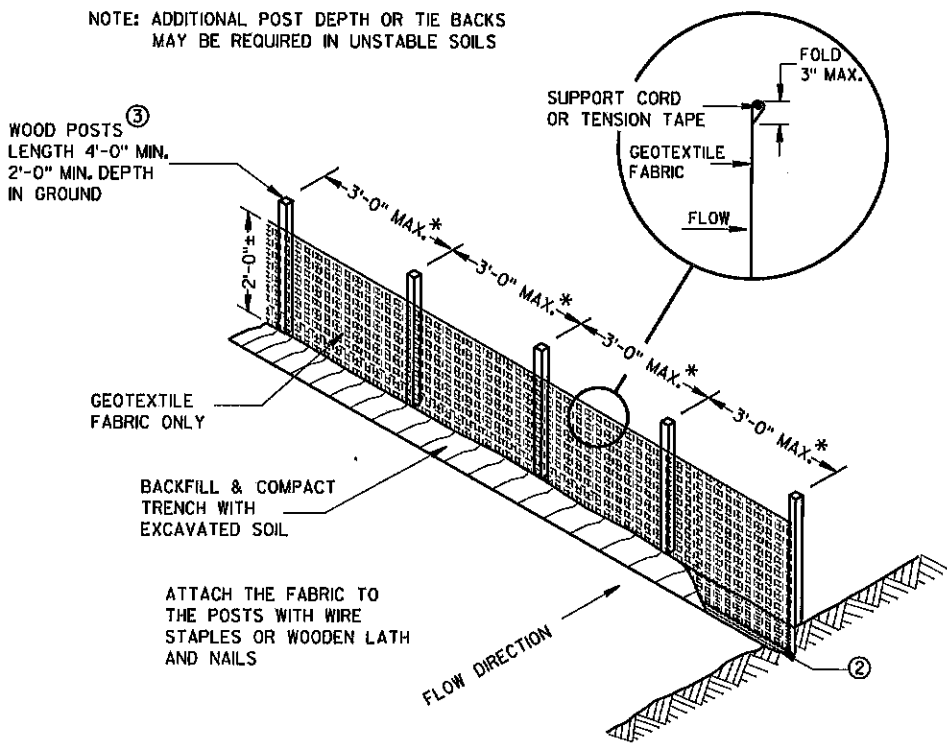
GENERAL NOTES

DETAILS OF CONSTRUCTION NOT SHOWN ON THIS DRAWING SHALL CONFORM TO THE PERTINENT REQUIREMENTS OF THE STANDARD SPECIFICATIONS AND APPLICABLE SPECIAL PROVISIONS.

- ① HORIZONTAL BRACE REQUIRED WITH 2" X 4" WOODEN FRAME OR EQUIVALENT AT TOP OF POSTS.
- ② FOR MANUAL INSTALLATIONS THE TRENCH SHALL BE A MINIMUM OF 4" WIDE & 6" DEEP TO BURY AND ANCHOR THE GEOTEXTILE FABRIC. FOLD MATERIAL TO FIT TRENCH AND BACKFILL & COMPACT TRENCH WITH EXCAVATED SOIL.
- ③ WOOD POSTS SHALL BE A MINIMUM SIZE OF 1/8" X 1/8" OF OAK OR HICKORY.
- ④ SILT FENCE TO EXTEND ACROSS THE TOP OF THE PIPE.
- ⑤ CONSTRUCT SILT FENCE FROM A CONTINUOUS ROLL IF POSSIBLE BY CUTTING LENGTHS TO AVOID JOINTS. IF A JOINT IS NECESSARY USE ONE OF THE FOLLOWING TWO METHODS; A) OVERLAP THE END POSTS AND TWIST, OR ROTATE, AT LEAST 180 DEGREES, B) HOOK THE END OF EACH SILT FENCE LENGTH.

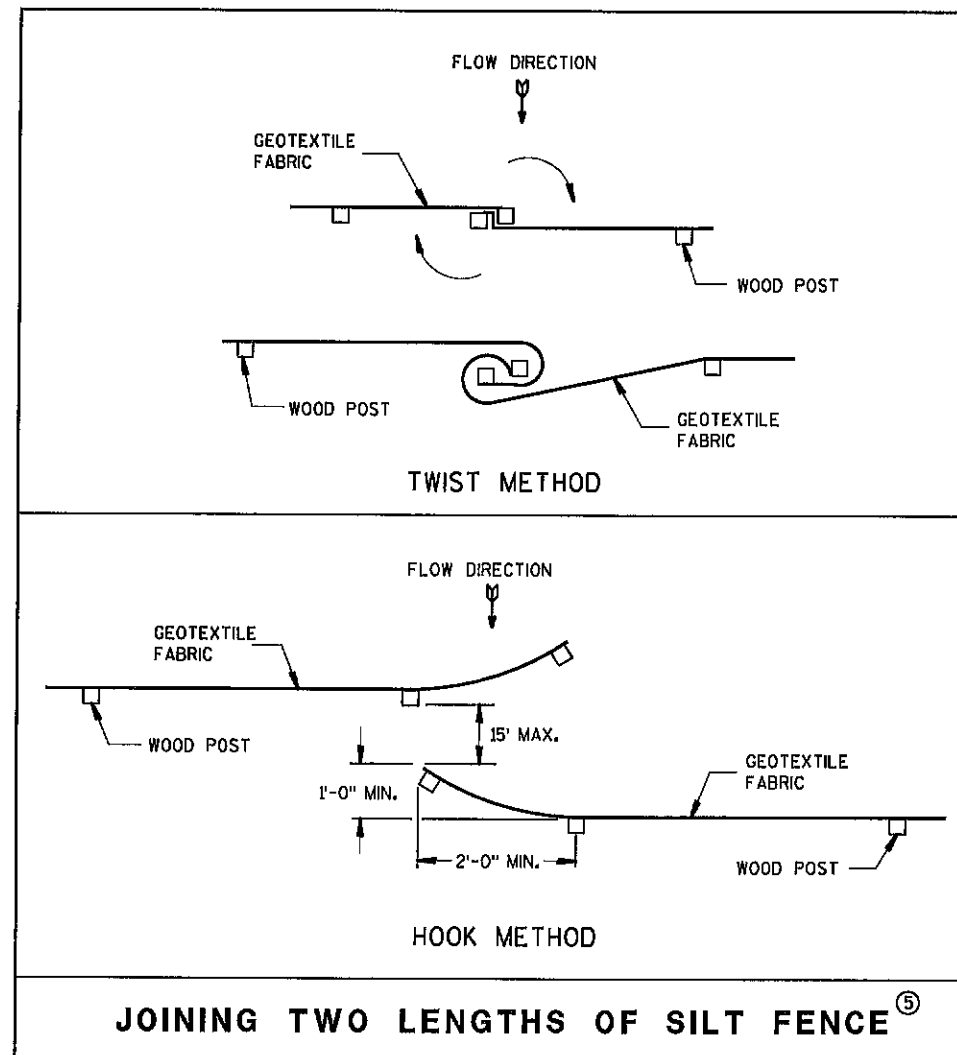


TRENCH DETAIL

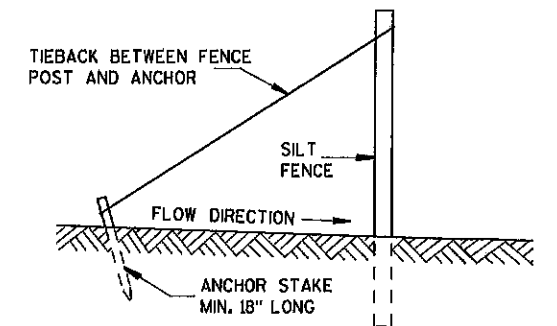


\*NOTE: 8'-0" POST SPACING ALLOWED IF A WOVEN GEOTEXTILE FABRIC IS USED.

SILT FENCE



JOINING TWO LENGTHS OF SILT FENCE ⑤



SILT FENCE TIE BACK  
(WHEN REQUIRED BY THE ENGINEER)

<b>SILT FENCE</b>	
STATE OF WISCONSIN DEPARTMENT OF TRANSPORTATION	
APPROVED	
4-29-05	/s/ Beth Canestra
DATE	CHIEF ROADWAY DEVELOPMENT ENGINEER
FHWA	

**GENERAL NOTES**

DETAILS OF CONSTRUCTION, MATERIALS AND WORKMANSHIP NOT SHOWN ON THIS DRAWING SHALL CONFORM TO THE PERTINENT REQUIREMENTS OF THE STANDARD SPECIFICATIONS AND THE APPLICABLE SPECIAL PROVISIONS.

TRACKING PAD SHALL BE INSPECTED DAILY. DEFICIENT AREAS SHALL BE REPAIRED OR REPLACED IMMEDIATELY.

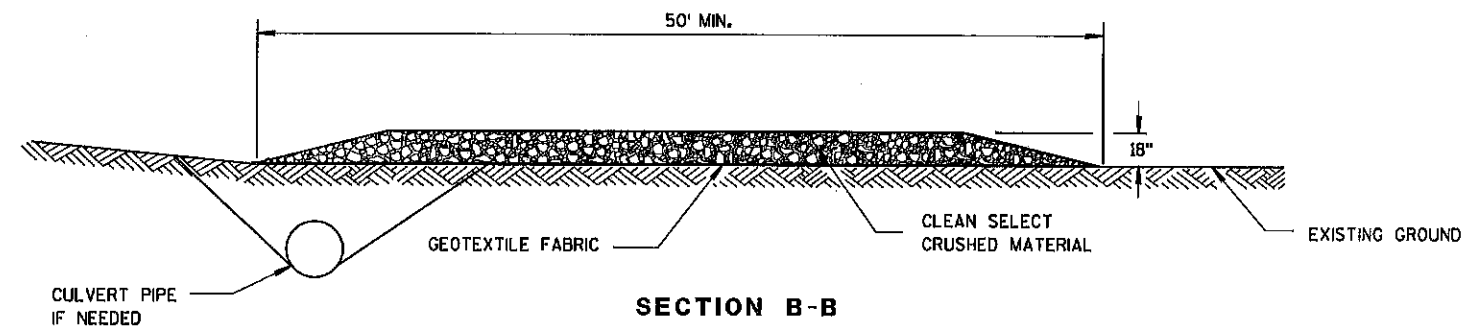
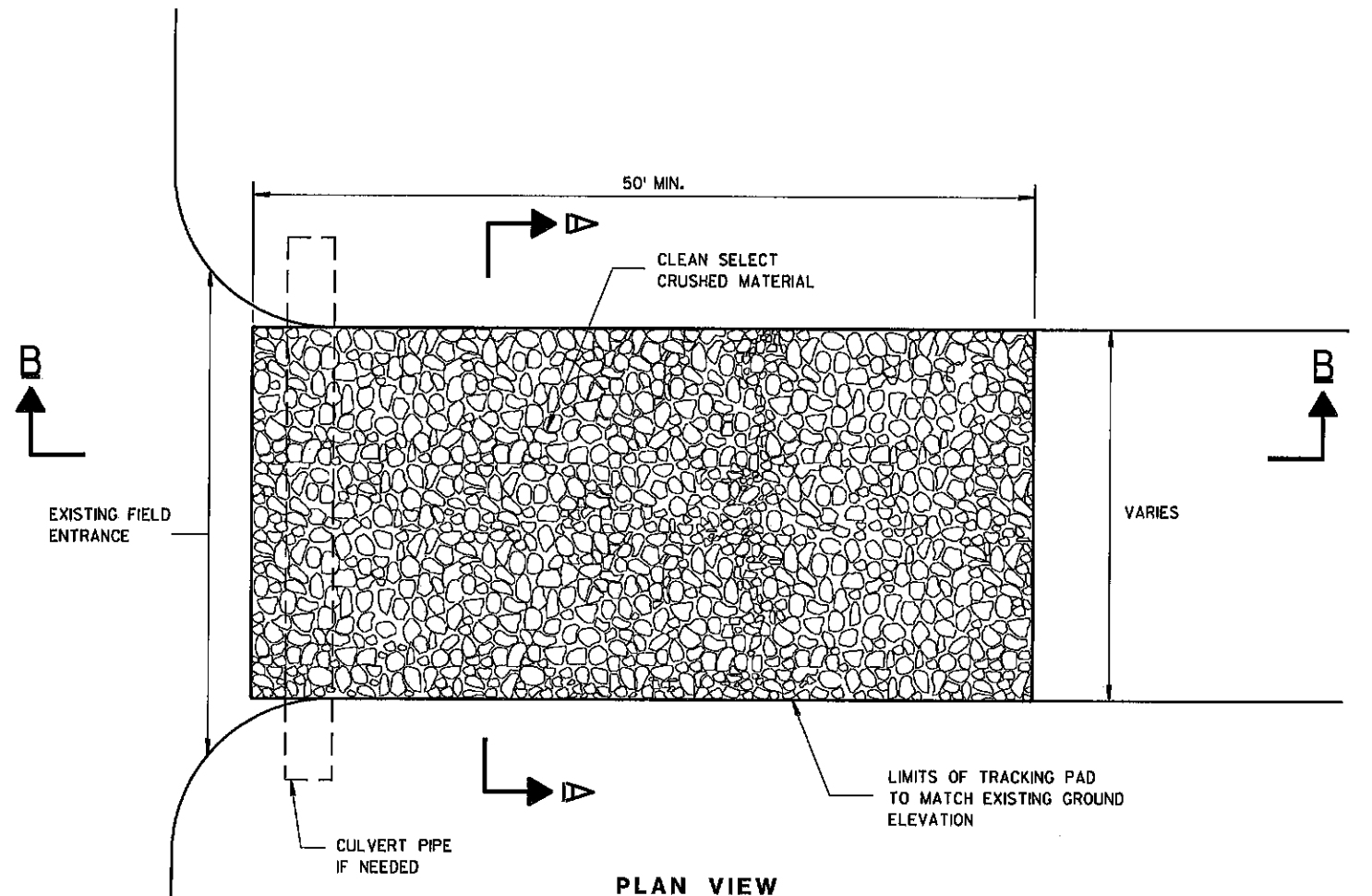
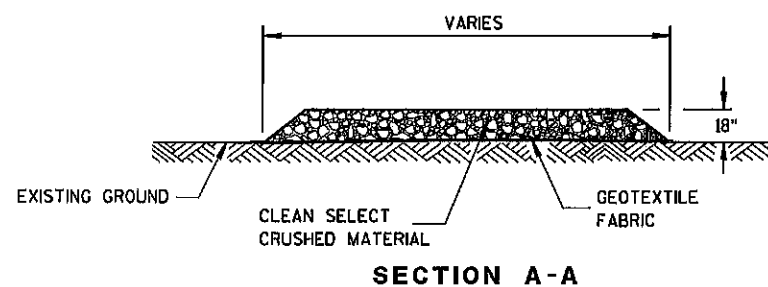
TRACKING PAD TO BE REMOVED AFTER CONSTRUCTION IS COMPLETED.

TRACKING PAD SHALL BE THE FULL WIDTH OF THE EGRESS POINT.

SURFACE WATER MUST BE PREVENTED FROM PASSING THROUGH THE TRACKING PAD. FLOWS SHALL BE DIVERTED AWAY, AROUND OR CONVEYED UNDER THE TRACKING PAD.

CULVERT PIPE OR OTHER BMP USED TO DIVERT WATER AWAY, AROUND OR UNDER THE TRACKING PAD SHALL BE DESIGNED TO CONVEY THE 2 YEAR - 24 HOUR EVENT.

THE COST OF ADDITIONAL BMP TO DIVERT WATER ARE INCIDENTAL TO THE TRACKING PAD BID ITEM.



**TRACKING PAD**

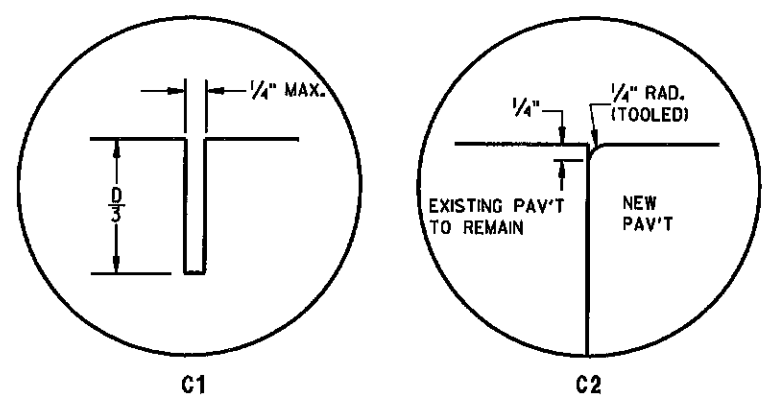
<b>TRACKING PAD</b>	
STATE OF WISCONSIN DEPARTMENT OF TRANSPORTATION	
APPROVED	/s/ Jerry H. Zoog
3-24-2011 DATE	ROADWAY STANDARDS DEVELOPMENT ENGINEER
FHWA	

6

6

S.D.D. 8 E 14-1

S.D.D. 8 E 14-1

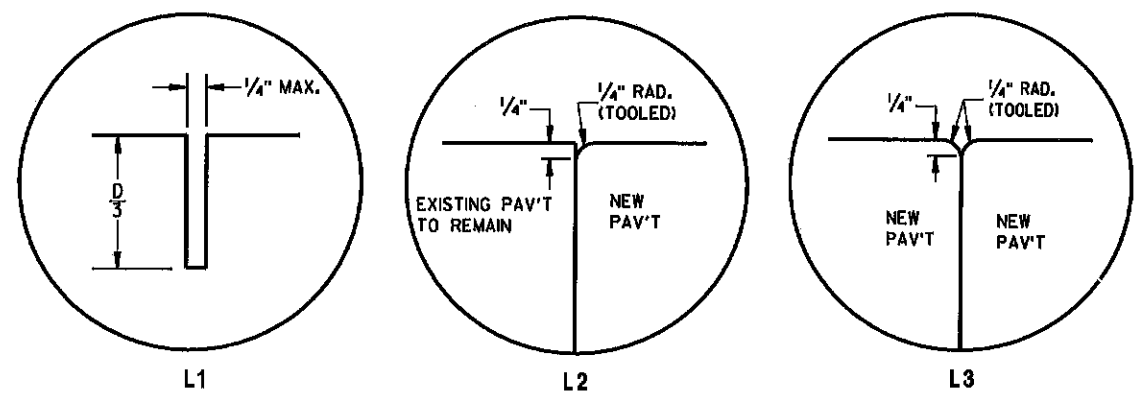


TRANSVERSE JOINTS

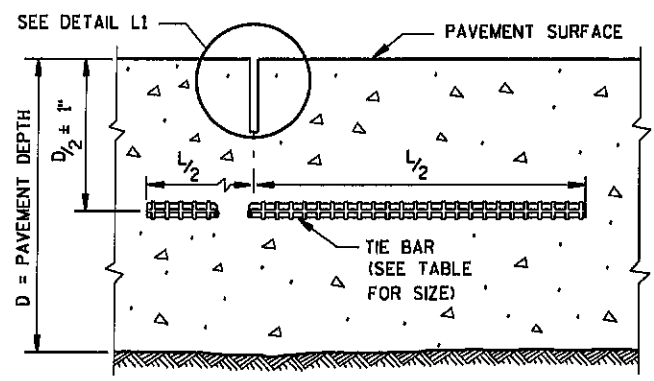
**TIE BAR TABLE**

PAVEMENT DEPTH (D)	TIE BAR SIZE	TIE BAR LENGTH (L)	MAX. TIE BAR SPACING
< 10 1/2"	NO. 4	30"	36"
≥ 10 1/2"	NO. 5	36"	36"
	NO. 4*	30"	24"**

\* SUBSTITUTE BENT BARS AT LONGITUDINAL JOINTS WHEN EQUIPMENT LIMITATIONS DURING CONSTRUCTION WARRANT (e.g. AUXILIARY LANES OR TURN LANES)  
 \*\* CONFORM TO 15" MINIMUM SPACING FROM TRANSVERSE JOINTS; SPACING BETWEEN TIE BARS WILL BE 30" AT TRANSVERSE JOINTS.



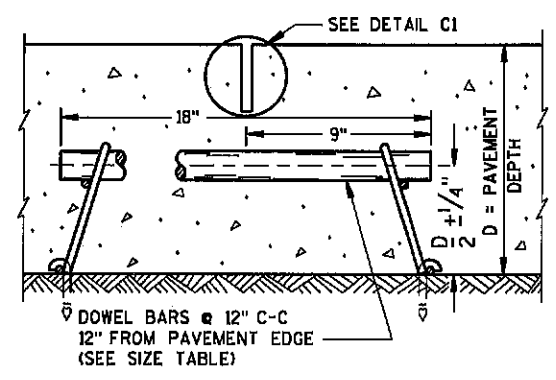
LONGITUDINAL JOINTS



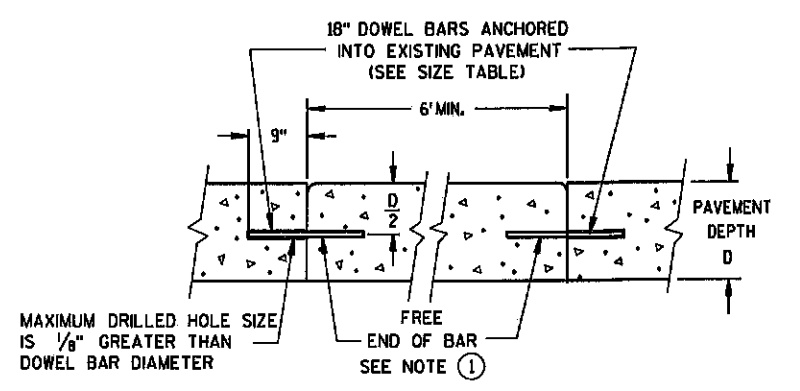
SECTION C-C  
SAWED LONGITUDINAL JOINT

**GENERAL NOTES**

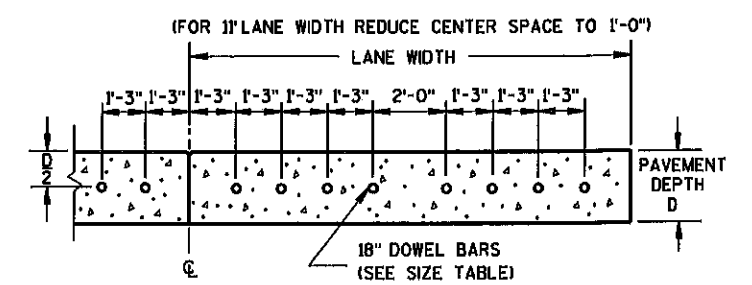
- INSTALL DOWEL BARS PARALLEL TO THE PAVEMENT CENTERLINE AND PAVEMENT SURFACE.
- CONCRETE PAVEMENT REPAIRS OF EXISTING NONDOWELED CONCRETE PAVEMENTS DO NOT NEED TO BE DOWELED.
- DO NOT SEAL OR FILL JOINTS.
- ANCHOR DOWEL BARS AND TIE BARS INTO DRILLED HOLES WITH AN EPOXY.
- FOR MULTI-LANE CONCRETE PAVEMENT REPLACEMENTS, PROVIDE A MINIMUM DISTANCE OF 15 INCHES FROM ALL TRANSVERSE JOINTS OR EDGES OF REPLACEMENT TO THE CENTER OF THE TIE BAR NEAREST THAT JOINT OR EDGE.
- ① APPLY A THIN UNIFORM COATING OF SURFACE TREATMENT TO THE FREE END OF DOWEL BARS TO PREVENT BONDING.



SECTION F-F  
CONTRACTION JOINT



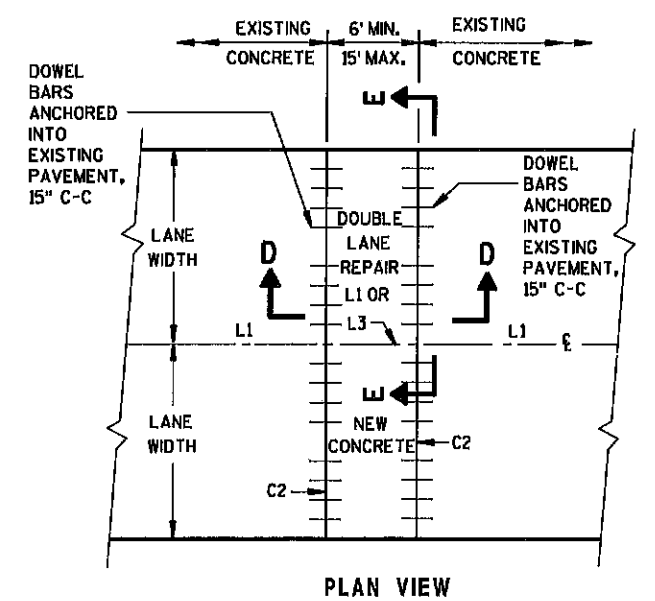
SECTION D-D



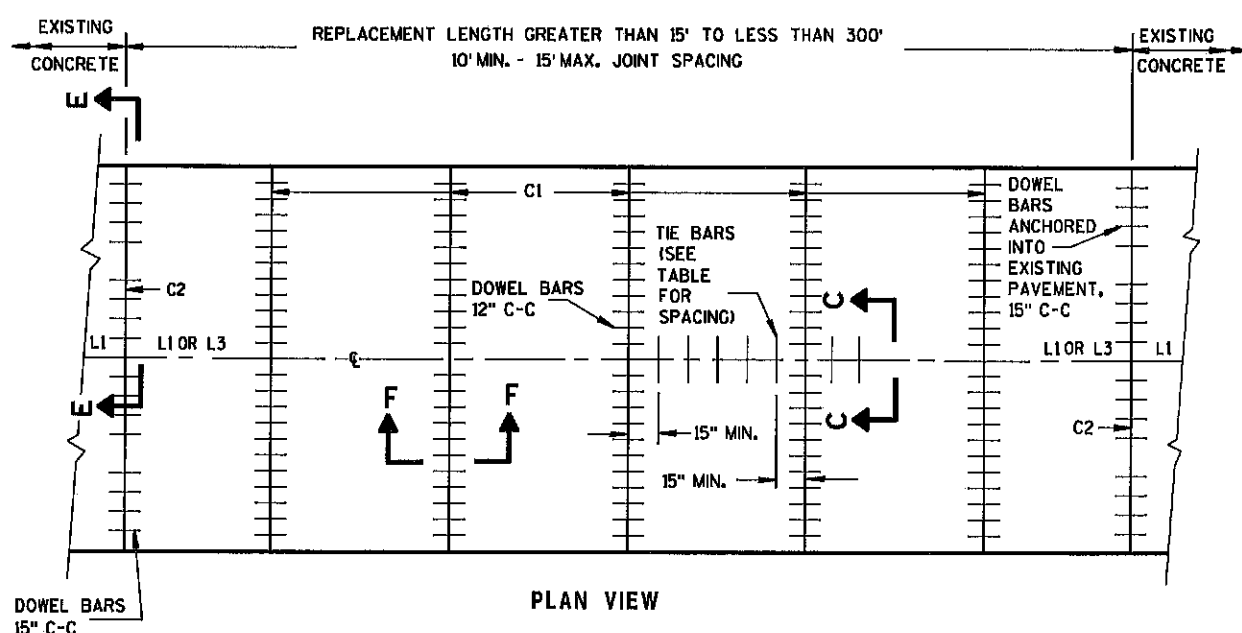
SECTION E-E  
DRILLED DOWEL BAR CONSTRUCTION JOINT

**PAVEMENT DEPTH, DOWEL BAR SIZE AND JOINT SPACING TABLE**

PAVEMENT DEPTH (D)	DOWEL BAR DIAMETER	CONTRACTION JOINT SPACING
5 1/2", 6", 6 1/2"	NONE	12'
7", 7 1/2"	1"	14'
8", 8 1/2"	1 1/4"	15'
9", 9 1/2"	1 1/4"	15'
10" & ABOVE	1 1/2"	15'



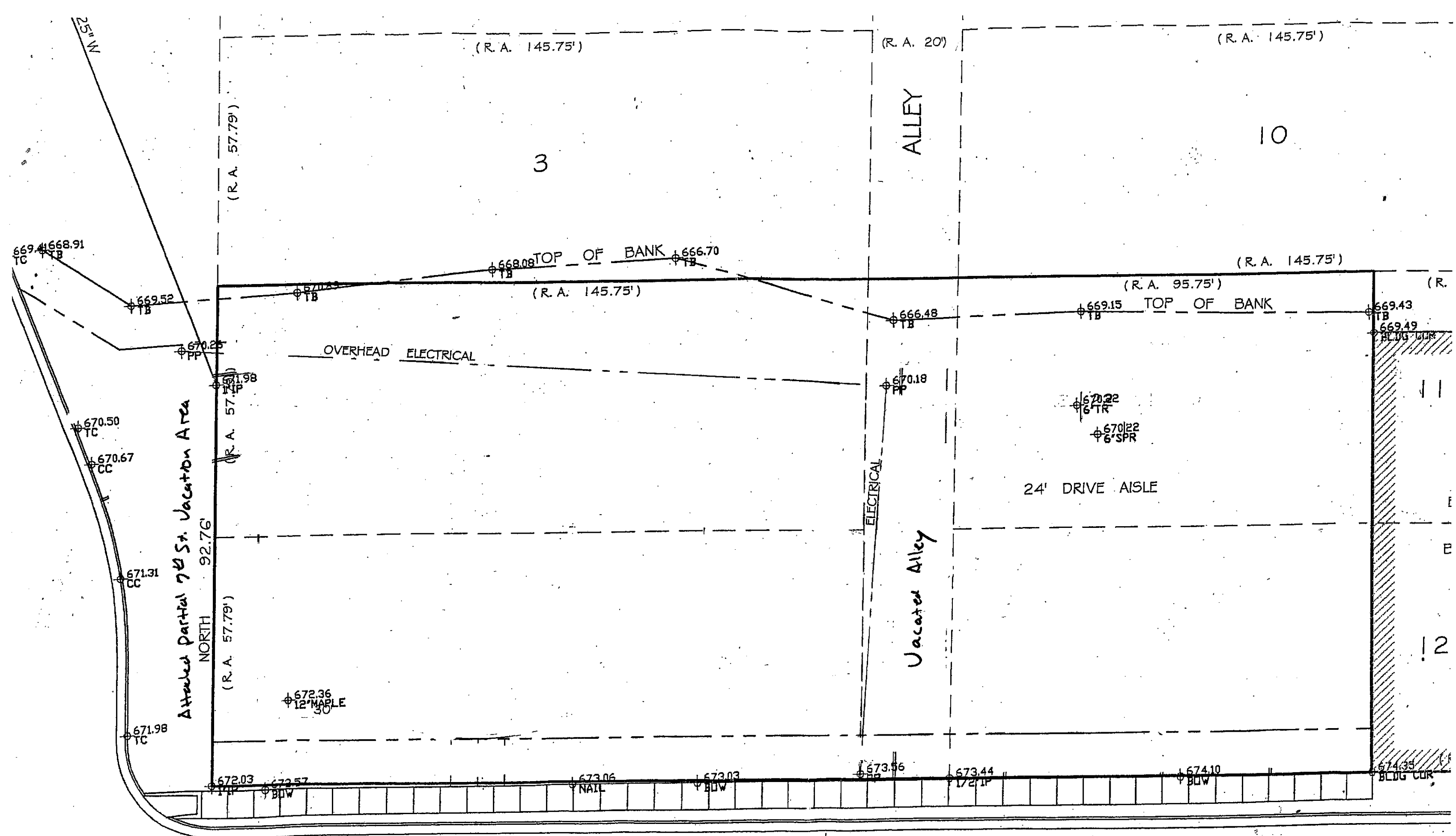
PLAN VIEW  
MULTI-LANE CONCRETE PAVEMENT REPAIR



PLAN VIEW  
MULTI-LANE CONCRETE PAVEMENT REPLACEMENT

**CONCRETE PAVEMENT  
REPAIR AND REPLACEMENT**

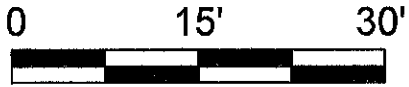
STATE OF WISCONSIN  
DEPARTMENT OF TRANSPORTATION



Existing Site Survey

1A CROSS STREET





SCALE: 1" = 15'

3

2

1

BURNS, DURAND, SMITH & RUBLEE  
ADDITION  
BLOCK 11

31.47' +/-  
N 89°56'29" E

PROPOSED VACATION AREA

RADIUS 165.5'

32.15' +/-  
N 22°29'45" W

62.20' N 10°52'31" W

115.58' +/- S 0°02'37" E

57 19/24' (P)

57 19/24' (P)

7.5'

14.78' N 0°02'37" W

12.49' N 36°56'28" W

10'

P.O.B.



7TH STREET

STREET

42' Rdwy.

LA CROSSE

STREET

EXHIBIT A

**7<sup>th</sup> Street North Partial Vacation**

**A part of the NW ¼ of the SW ¼ of Section 32, Township 16 North, Range 7 West lying adjacent to Lots 1 and 2 in Block 11 of the Burns, Durand, Smith and Rublee's Addition to the City of La Crosse, La Crosse County, Wisconsin being more particularly described as follows:**

Beginning at the intersection of the North Right of Way line of La Crosse Street and the East Right of Way line of 7<sup>th</sup> Street, said point being the Southwest corner of Block 11 of said Burns, Durand, Smith and Rublee's Addition; thence N 36°56'28" W, 12.49' to the intersection of a line lying parallel and Westerly 7.5' of the West line of said Block 11 and a line lying parallel and Northerly 10' of the South line of said Block 11; thence N 0°02'37" W, 14.78' on said parallel line lying 7.5' West of Block 11 to the beginning of a curve; thence 62.58' along a curve to the left having a radius of 165.5' with the chord length of 62.20' which bears N 10°52'31" W; thence N 22°29'45" W, a distance of 32.15' more or less to the prolonged Westerly, North line of Lot 2, of said Block 11; thence along said prolonged line N 89°56'29" E, 31.47' more or less to the Northwest corner of said Lot 2; thence S 0°02'37" E, 115.58' more or less along the West line of Block 11 to the point of beginning.

Drafted by: jmc 9/26/2016

S:\PROJECTS\2016 MISC\2016-045 7th Street North Vacation Legal and Map\7th Street North Vacation.docx