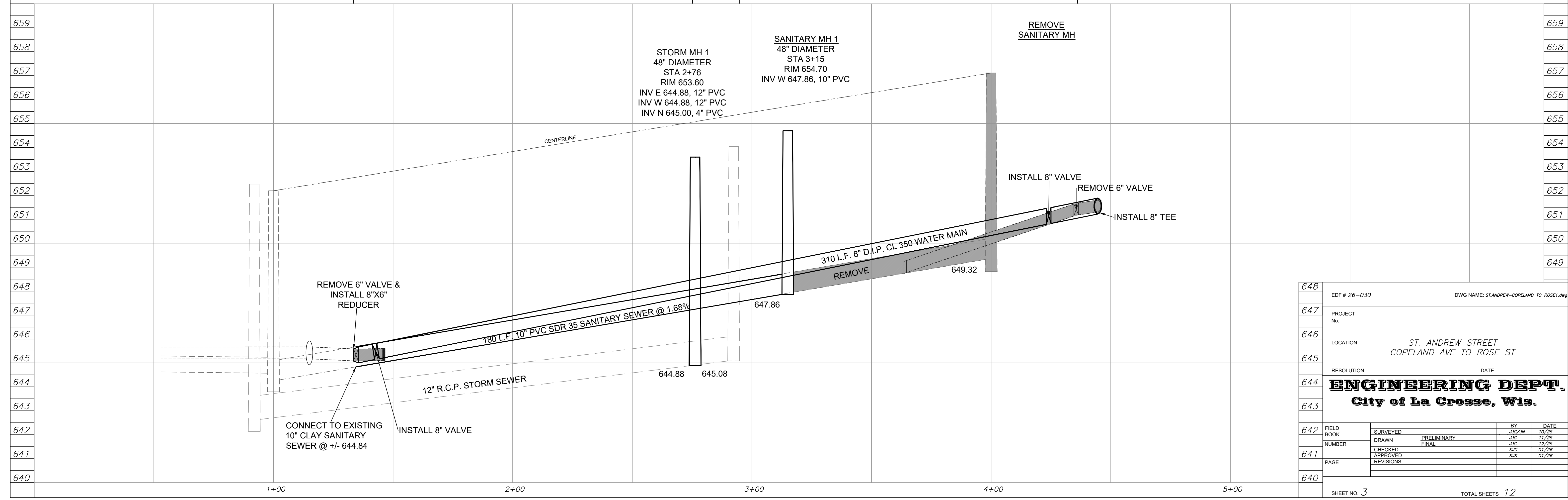

 SCALE: 1" = 20' H
 1" = 2' V
 ELEVATIONS SHOWN
 ARE NAVD 1988

NOTE
 CONTRACTOR IS TO VERIFY LOCATION OF ALL UTILITIES
 PRIOR TO ANY CONSTRUCTION



648	EDF # 26-030		DWG NAME: ST.ANDREW-COPELAND TO ROSE1.dwg	
647	PROJECT No.			
646	LOCATION ST. ANDREW STREET COPELAND AVE TO ROSE ST			
645	RESOLUTION DATE			
644	ENGINEERING DEPT.			
643	City of La Crosse, Wis.			
642	FIELD BOOK	SURVEYED	BY	DATE
641	NUMBER	DRAWN	APPROVED	DATE
640	PAGE	CHECKED	REVISIONS	
	SHEET NO. 3	TOTAL SHEETS 12		