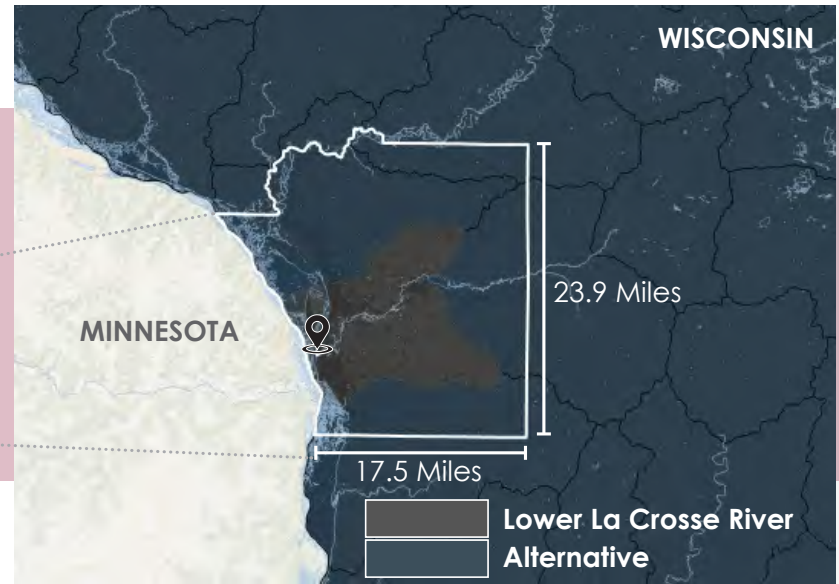


An aerial photograph of a park area. A river flows through the center-left of the image. A large, irregularly shaped area of dense green trees is highlighted in a bright yellow-green color. In the bottom right corner, there are several buildings, including a large white one with a curved roof and a smaller one with a blue roof. The overall scene is a mix of natural greenery and developed structures.

river_point_park

May 2021

LOCATION INFORMATION

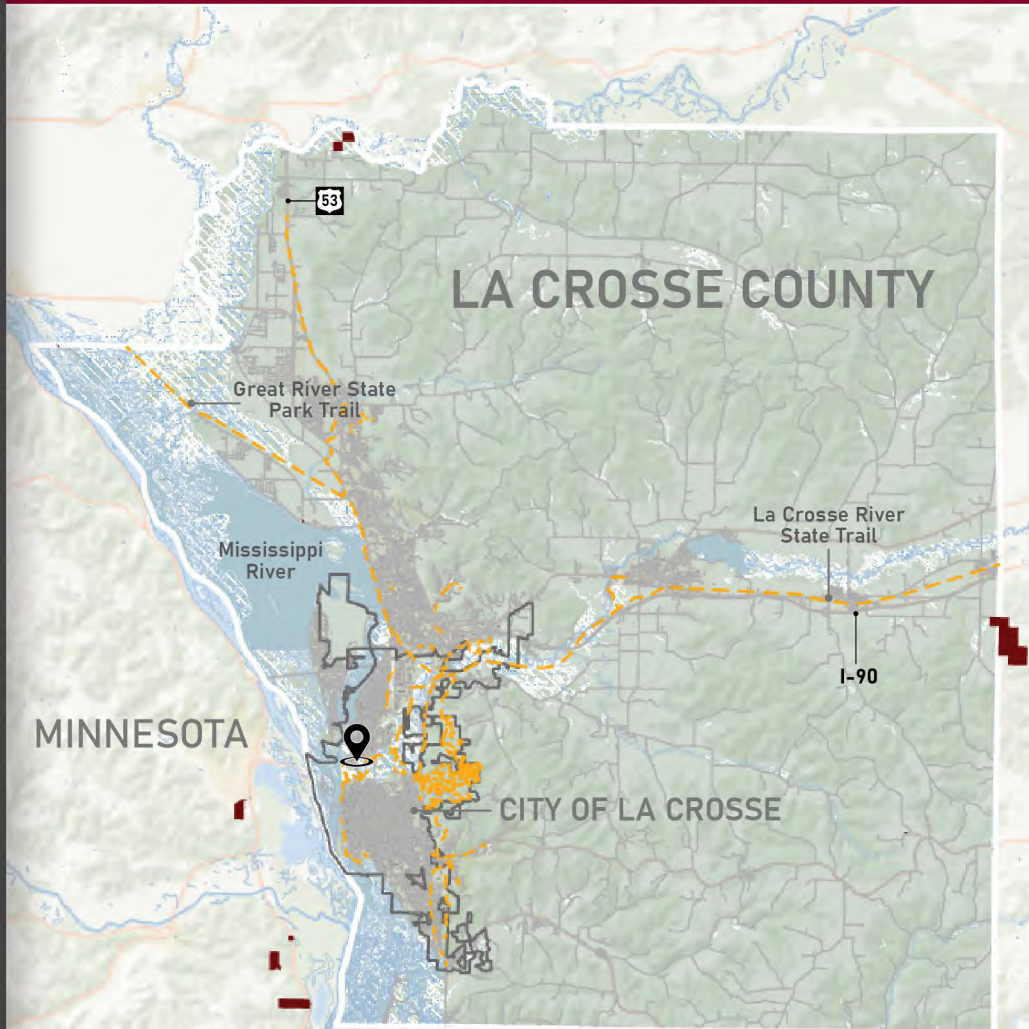


REGIONAL OVERVIEW

#5 Best Counties to live in Wisconsin

3:17 PM

La Crosse County Analysis



- Ho-Chunk Nation reservations border La Crosse County
- The most popular biking trails enter the city both laterally and longitudinally
- The City of La Crosse exists alongside the Mississippi and Black rivers
- Wetlands combat against erosion and flooding



Ho-Chunk Nation



City of La Crosse Boundary



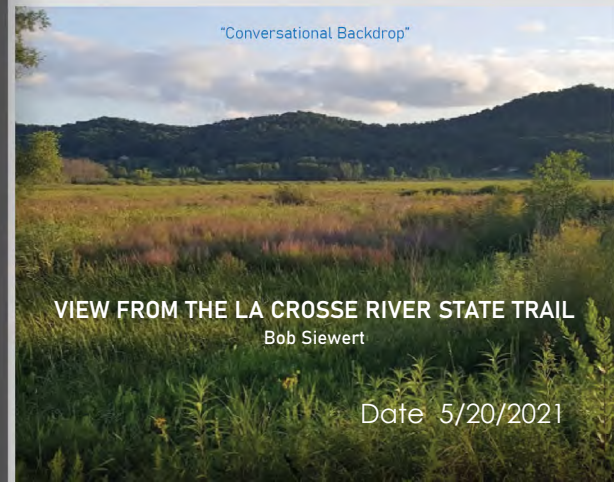
River Systems



Trail Network



Site Location



Date 5/20/2021

PROJECT INFORMATION

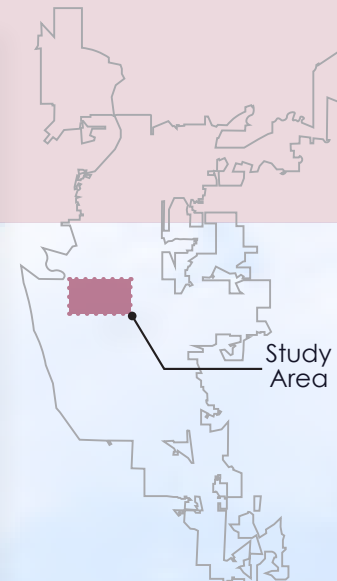
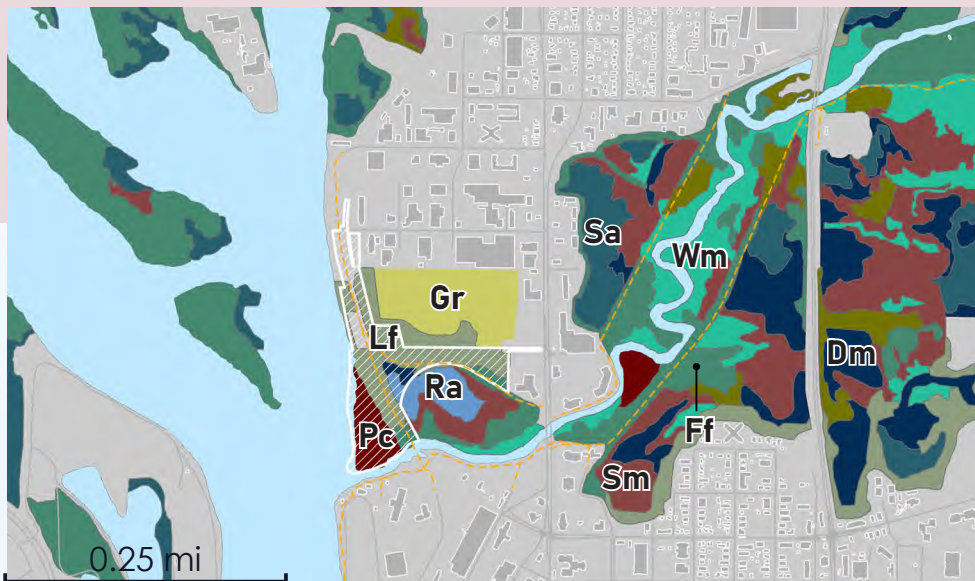


PROJECT GOALS

- 1 Preserve 75% of pre-existing native vegetation
- 2 Support the ecosystems of species that are losing their habitats to future urban expansion
- 3 Increase the number of site visits to River Point Park through sustainable tourism
- 4 Improve historical connections to the region's natural and cultural context and work with Indigenous Communities
- 5 Integrate River Point Park into the city

SITE ANALYSIS

LAND COVER MOSAIC



- 1 **Gr** Grassland
- 2 **Lf** Lowland Forest
- 3 **Dm** Deep Marsh Perennial
- 4 **Ra** Rooted Floating Aquatics
- 5 **Sm** Shallow Marsh Perennial
- 6 **Pc** Populus Community
- 7 **Wm** Wet Meadow
- 8 **Ff** Floodplain Forests
- 9 **Sa** Submerged Aquatic Vegetation



260+ Fish Species

25% if species in North America



50+ Mammal Species Hosted in
Upper Mississippi River

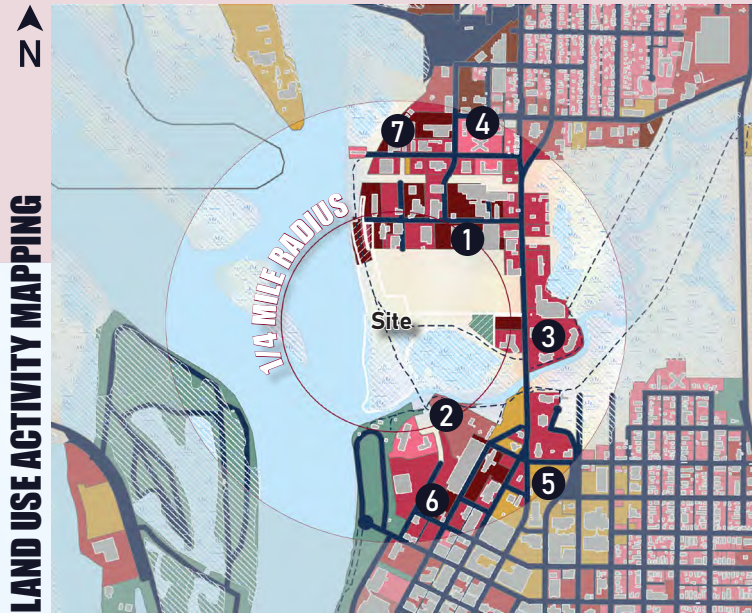


145+ Amphibians and Reptiles
within the Upper Mississippi River



60% of North American Birds
use the Mississippi River Basin

SITE ANALYSIS



- ① Primarily Goods, Storage, or Handling
- ② Gatherings at Fairs and Exhibitions
- ③ Shopping
- ④ Five or More Family Residential
- ⑤ Instructional Activities - Outside Classrooms
- ⑥ Restaurant Activity
- ⑦ Office Activities



Ho-Chunk, Ojibwe, and Lakota
Indigenous Groups Hunted, Fished, and Traded in the Region.

- ① War Eagle
- ② Steamboat Landing
- ③ Trading Post
- ④ Milwaukee Railroad Bridge
- ⑤ Mississippi River

1841 **Prairie La Crosse**
The French Established a Trading Post known for Transportation and Sawmilling.

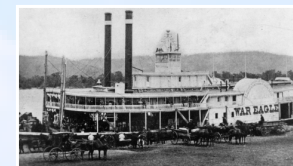
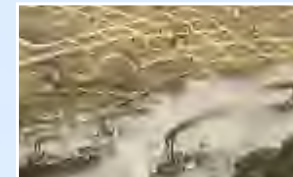
1850
1856 **La Crosse Legally Became a City**
1858 **La Crosse was reachable by rail**

1870 **Fire & the Sinking of the War Eagle**
In the Civil War, the War Eagle was for the Transportation of Supplies and Troops.

1890 **Viterbo University**

1900

1909 **University of Wisconsin - La Crosse**

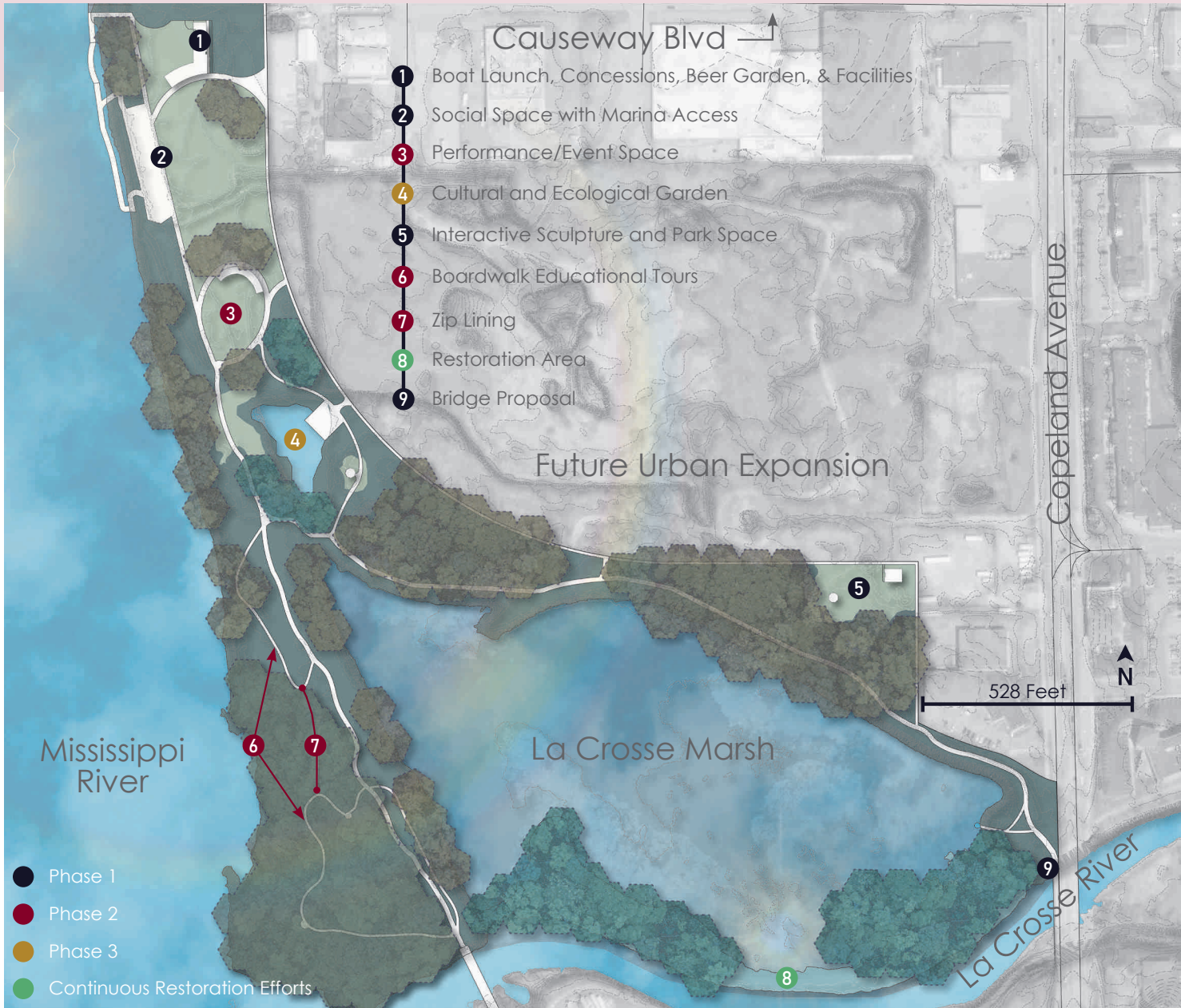


A paved path winds through a lush green forest. The path is made of grey asphalt and is flanked by grass and dense foliage. The trees are tall and green, creating a canopy overhead. The sky is overcast and grey.

river_point vision

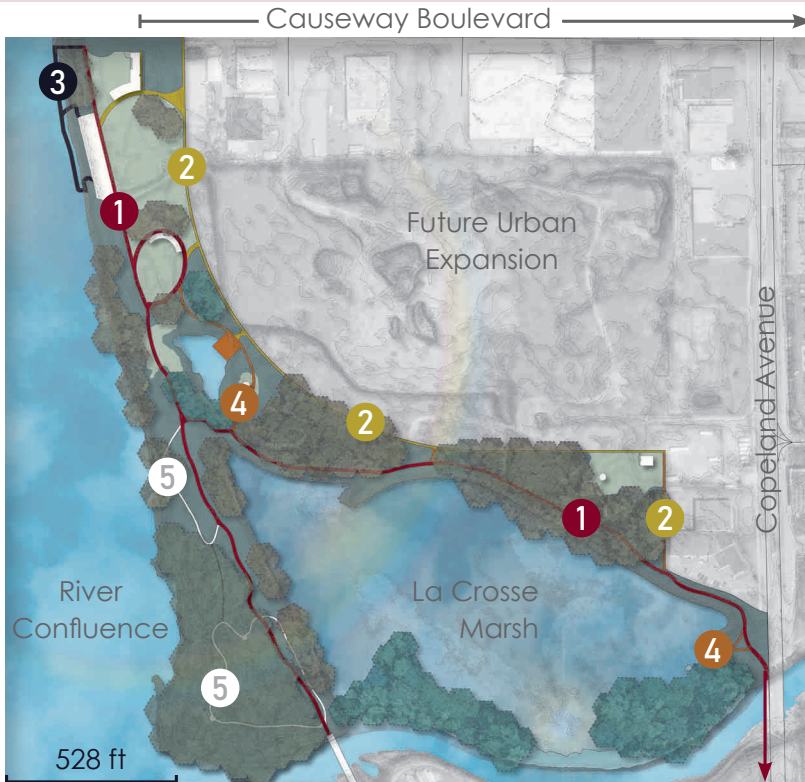
Date 5/20/2021

RIVER POINT PARK I MASTER PLAN



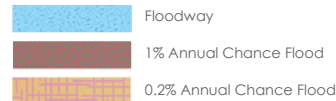
PATH SYSTEM

OVERALL PATH SYSTEM



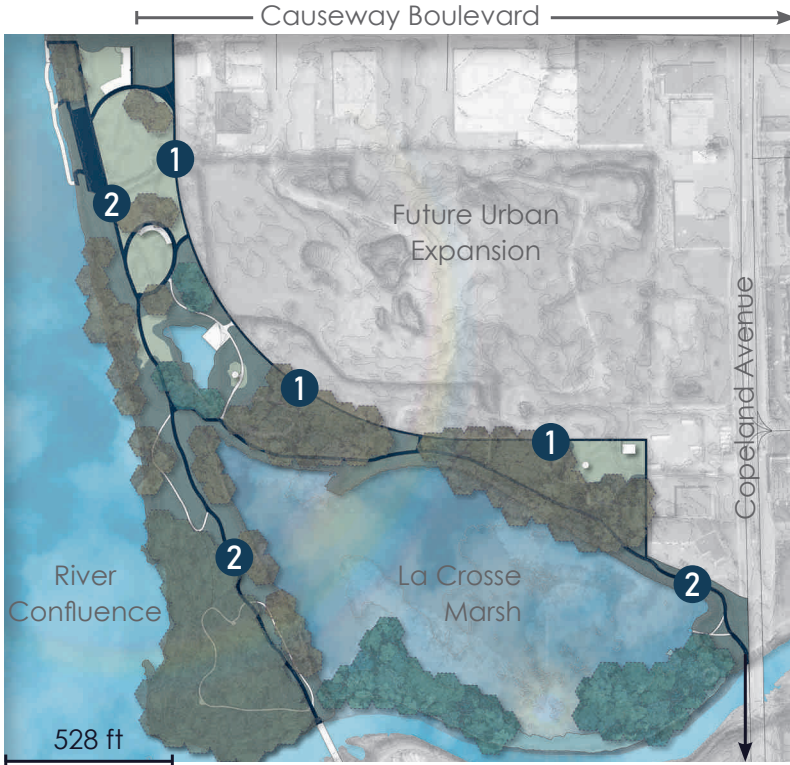
- 1 Biking/Walking (10 - 12 ft width | 1.00 mile)
- 2 Primary Paths (6 - 12 ft width | 0.41 miles)
- 3 Recreation Paths (0 -12 ft width | 0.16 miles)
- 4 Secondary Paths (6 ft width | 0.14 miles)
- 5 Wetland Boardwalk (6 ft width | 0.38 miles)

FLOODWAY PATH SYSTEM



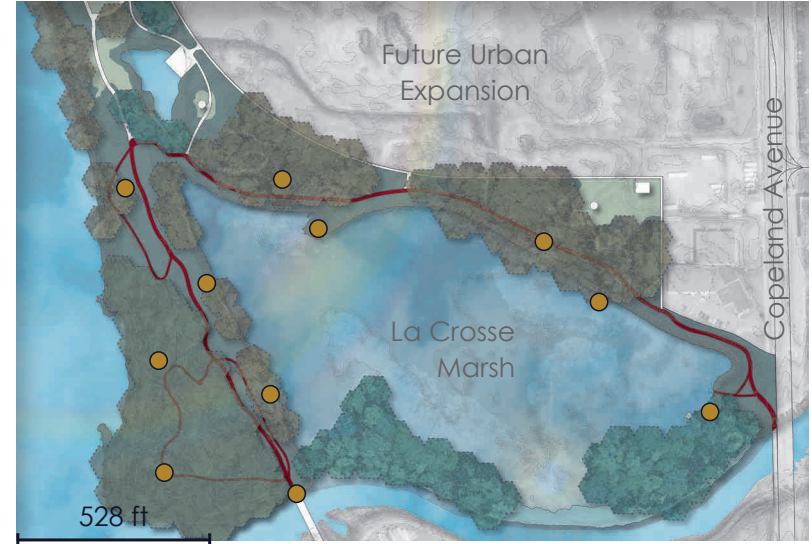
PATH SYSTEM

WINTER PATH SYSTEM



- ① Hand Shoveling/Snow Blower
- ② Snow Plow (Blade 1/2" to 3/4" Off Ground)

NIHOSÓ ART PARK



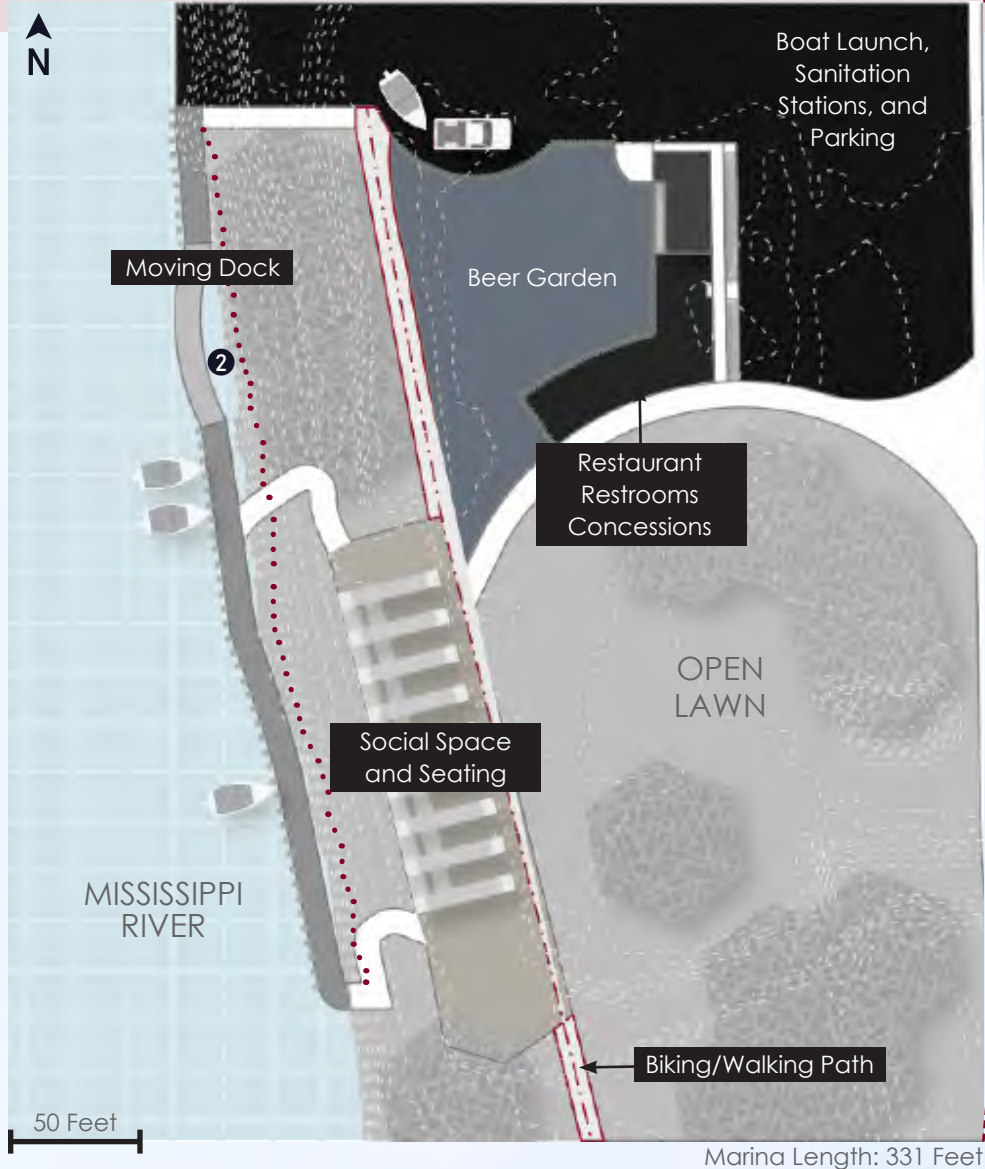
- Art and Sculpture Placement



A scenic view of a large lake with a tree in the foreground and hills in the background. The text 'master_plan features' is overlaid in the center.

master_plan features

RIVER POINT PARK NORTH



SITE LOCATION



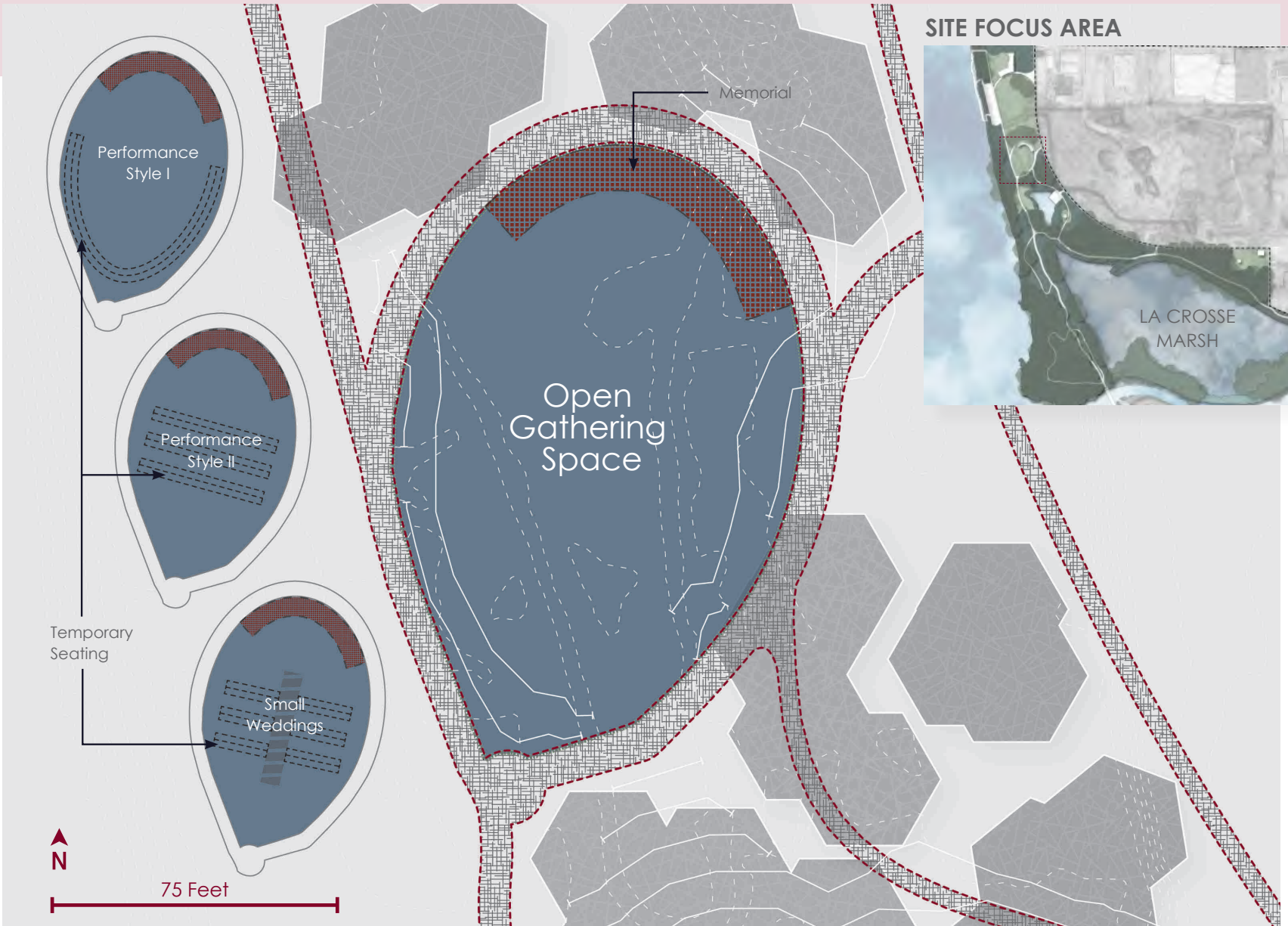
GOALS

- 1 Keep Development to the North
- 2 Protect the River's Edge
- 3 Provide a Small Scale Marina
- 4 Provide Conversational Spaces

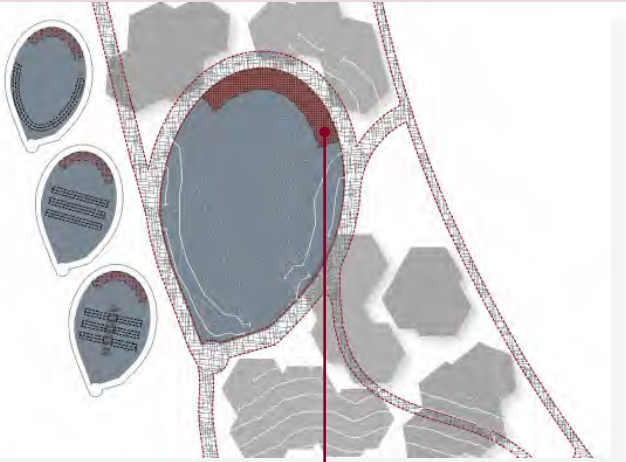


Reuse existing urban footprint

SITE FOCUS AREA | TEMPORARY SEATING



SITE FOCUS AREA I MEMORIAL



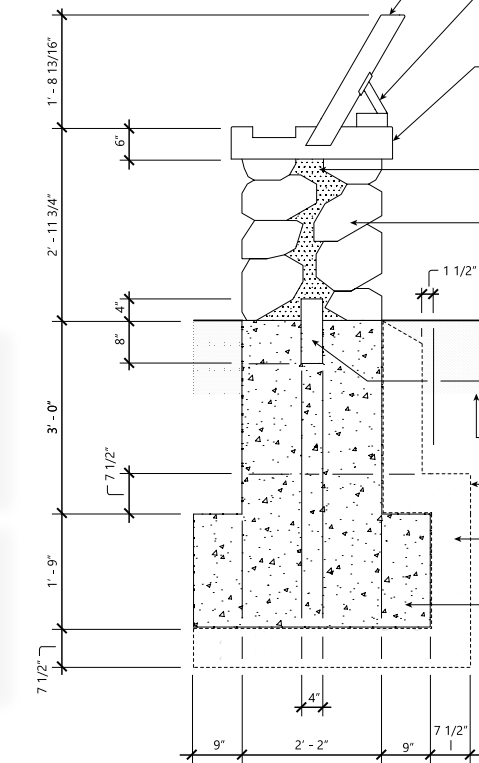
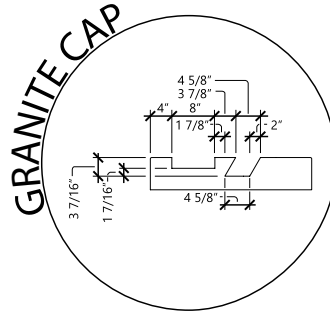
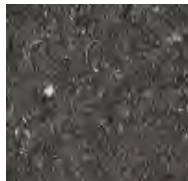
CONCEPT SKETCH



Water Trough

Granite Slab

Granite Boulder



SPECIFICATIONS

'STARLIGHT BLACK GRANITE' BY KAFKA GRANITE, WWW.KAFKAGRANITE.COM, SURFACE FINISH DEPENDENT, EMBEDDED, EXTRUDED, OR FLUSH TEXT DETERMINED BY LOCAL INDIGENOUS ARTISTS, ATTACH TO GRANITE CAP WITH MORTAR, SEE BELOW.

STAINLESS STEEL TABLET STAND, ASTM A-304, BLACK MATTE FINISH, INSTALL PER MFG. SPECIFICATIONS WITH LOCAL STEEL COMPANY.

GRANITE CAP, SELECT COOL GREY, CLEAN, SMOOTH FINISH, ATTACHED WITH MORTAR, SEE BELOW.

SANDBASE CLEAN MORTAR SHARP SAND COMPACT TO 90% CONCAVE, STANDARD COLOR, SWEPT JOINTS.

6 TO 8 Φ LOCAL GRANITE, SELECT, GREY, GRAVITY COMPACT, SMOOTH FINISH, TOP GRANITE STONES SHALL BE LEVEL AND PARALLEL TO MODIFIED GRADE.

FINISHED GRADE.

KEYSTONE IN CONCRETE.

SUBGRADE COMPACT TO 95% PROCTOR.

NON-WOVEN GEOTEXTILE 'TYPAR' ASTM 3401-G, 1'-0" MIN LAP JOINTS.

CA-7, CLEAN, CRUSHED STONE COMPACT TO 95% PROCTOR.

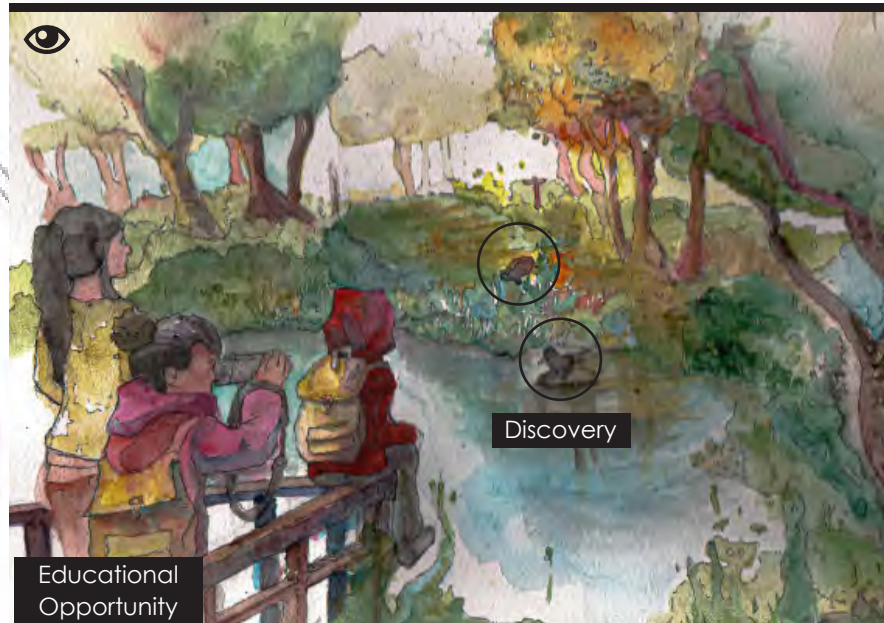
CONCRETE BASE, ASTM C-143, STANDARD COLOR, TYPE 1, 3250 PSI @ 28 DAYS, (6) SACK MIX, MAX 6" SLUMP, SMOOTH FINISH TOP.

B MEMORIAL REVEALING PLAQUE
NTS

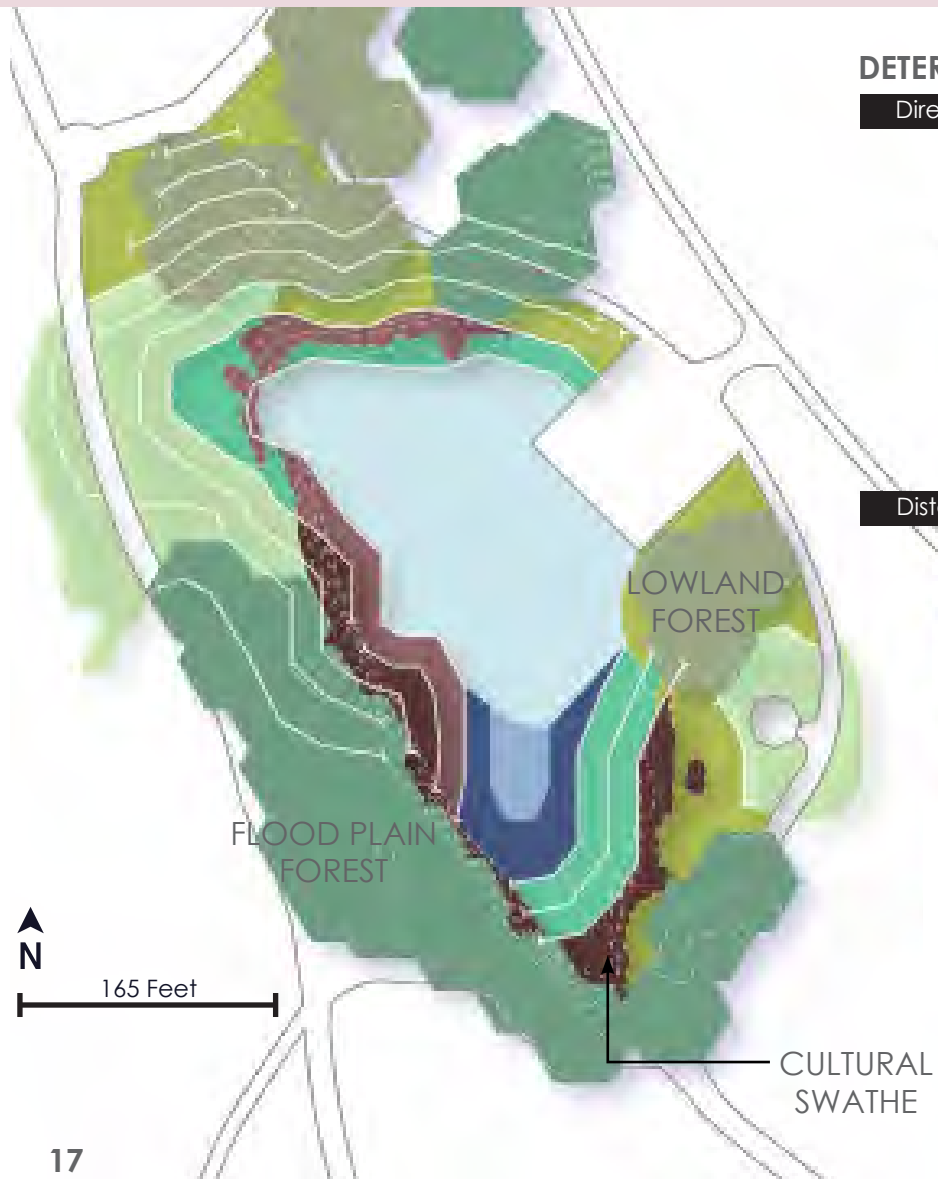
SITE FOCUS AREA | DISCOVERY



- 1 Open Lawn for Picnicking and Water Access
- 2 Pond Overlook
- 3 Signage and Wayfinding
- 4 Seating Areas

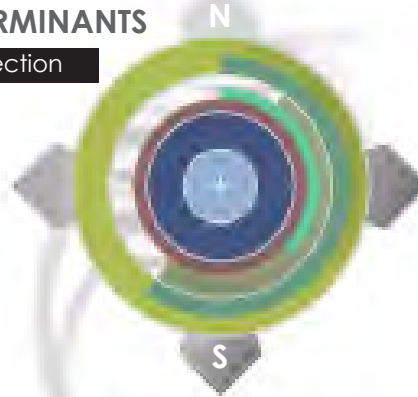


SITE FOCUS AREA I PLANTING

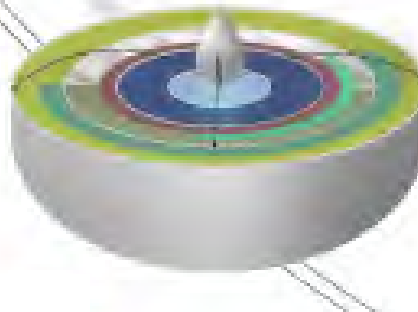


DETERMINANTS

Direction

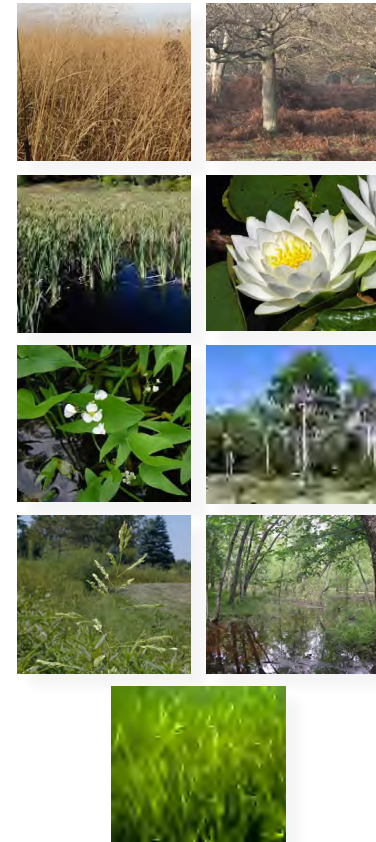


Distance



- Wet Meadow
- Shallow Marsh Perennial
- Grassland
- Open Lawn
- Deep Marsh Perennial
- Rooted Floating Aquatics

PLANT COMMUNITIES



SITE FOCUS AREA I PLANTING



GOALS

- 1 Utilizing Existing Communities
- 2 Provide Habitat for Existing Species
- 3 Space for Culture and Ecology

DNR Threatened or Endangered Species:
Black Tern, Wood Turtle, Henslow's Sparrow,
Blanding's Turtle, Golden-winged Warbler

