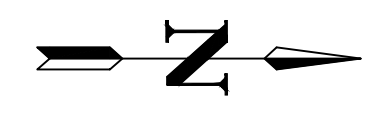
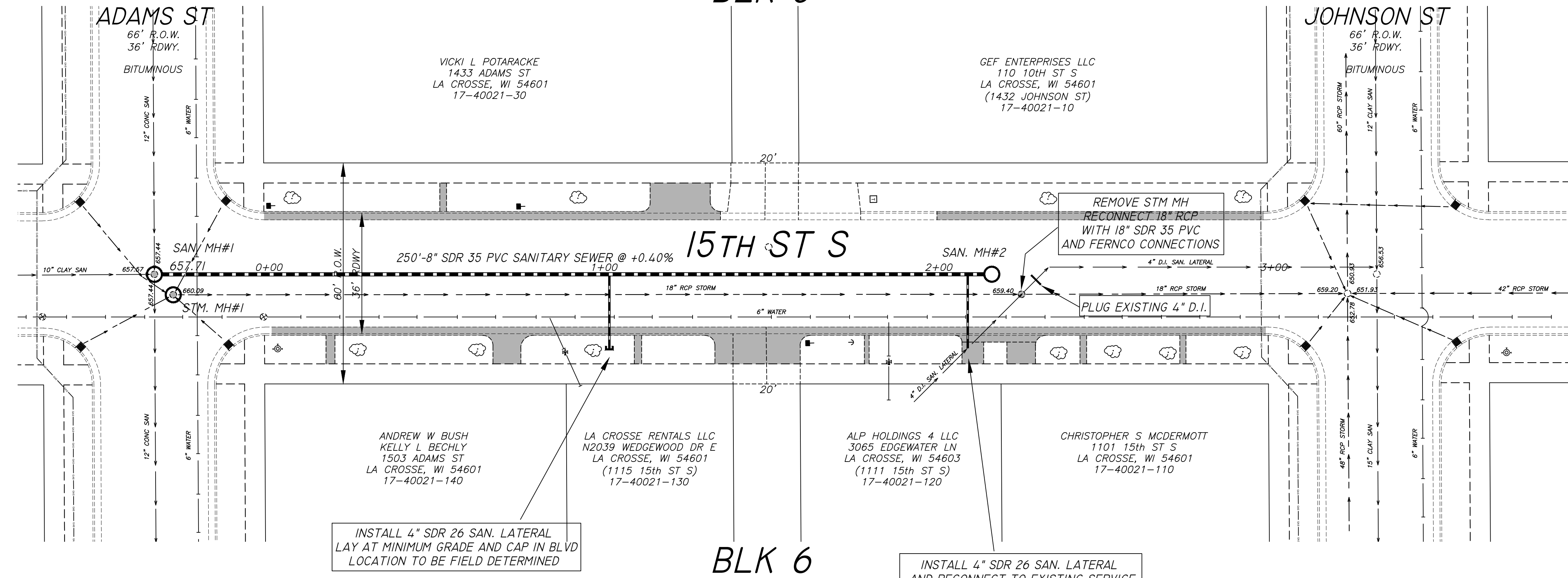


HEALY & ANDERSON'S ADDN. BLK 5



SCALE: 1"=20' H
1"=2' V

ELEVATIONS SHOWN ARE
NAVD 88

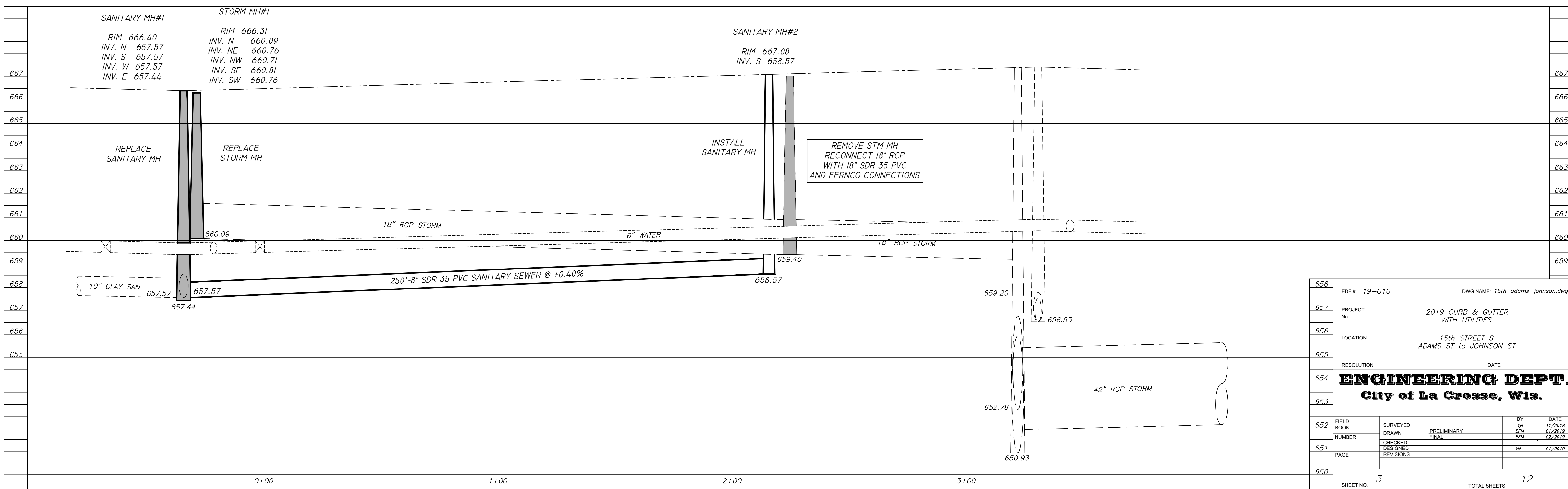


UTILITY QUANTITIES	
QUANTITIES	
2 EA. STANDARD SANITARY MANHOLE COMPLETE D=8.96', D=8.51'	
1 EA. STANDARD STORM MANHOLE COMPLETE D=6.22'	
250 LF. 8" SDR 35 PVC SANITARY SEWER	
40 LF. 4" SDR 26 PVC SANITARY LATERAL	
10 LF. 18" SDR 35 PVC STORM SEWER	
REMOVALS	
1 EA. STORM MANHOLE	

NOTE
CONTRACTOR IS TO VERIFY LOCATION OF ALL UTILITIES
PRIOR TO ANY CONSTRUCTION

ESTABLISHED GRADE	
15th ST S & ADAMS ST	665.63
15th ST S & JOHNSON ST	667.13

BENCHMARKS TOP NUT OF HYDRANT	
15th ST S & ADAMS ST	669.06
15th ST S & JOHNSON ST	670.40



658	EDF # 19-010	DWG NAME: 15th_adams-johnson.dwg
657	PROJECT No.	2019 CURB & GUTTER WITH UTILITIES
656	LOCATION	15th STREET S ADAMS ST to JOHNSON ST
655	RESOLUTION	DATE
654	ENGINEERING DEPT.	
653	City of La Crosse, Wis.	
652	FIELD BOOK	SURVEYED BY DATE
	NUMBER	DRAWN PRELIMINARY BY DATE
651	PAGE	CHECKED DESIGNED BY DATE
650	SHEET NO. 3	TOTAL SHEETS 12

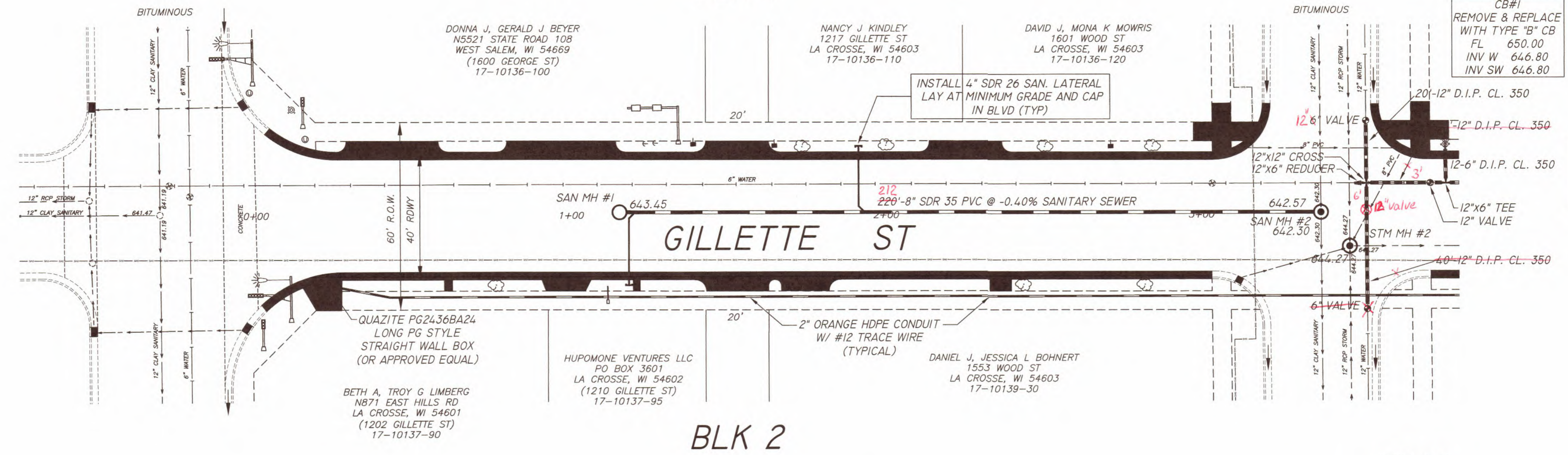


ELEVATIONS SHOWN ARE NAVD 88

SPIER & CANTERBURYS ADDN. BLK 1

GEORGE ST
60' R.O.W.
44' RDWY.

WOOD ST
70' R.O.W.
36' RDWY.



CB#1
REMOVE & REPLACE
WITH TYPE "B" CB
FL 650.00
INV W 646.80
INV SW 646.80

EXISTING HYDRANT TO BE REMOVED
AND SALVAGED FOR WATER UTILITY.
NEW HYDRANT WILL BE SUPPLIED
BY WATER UTILITY FOR
CONTRACTOR TO INSTALL

BLK 2

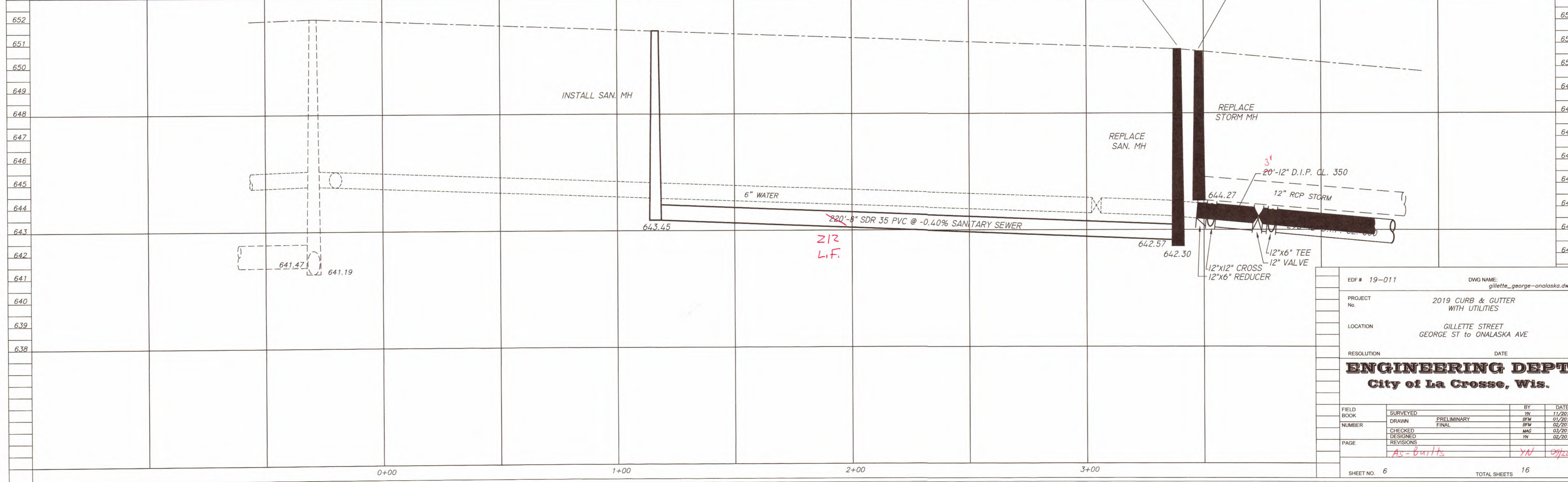
CITY OF LA CROSSE WILL PROVIDE ALL
CASTINGS AS NEEDED FOR REPLACEMENT OR
NEW STRUCTURES

SANITARY MH #2		STORM MH #1	
RIM	650.75	RIM	650.65
INV W	642.57	INV N	644.27
INV N	642.30	INV NE	645.12
INV S	642.30	INV E	644.27
D=8.45'		INV S	644.27
		INV SW	645.53
		D=6.38'	

BENCHMARKS	
TOP NUT OF HYDRANT	
GILLETTE ST & GEORGE ST	655.64
GILLETTE ST & WOOD ST	653.91

NOTE
CONTRACTOR IS TO VERIFY LOCATION OF ALL UTILITIES
PRIOR TO ANY CONSTRUCTION

SANITARY MH #1	
RIM	651.60
INV E	643.45
D=8.15'	

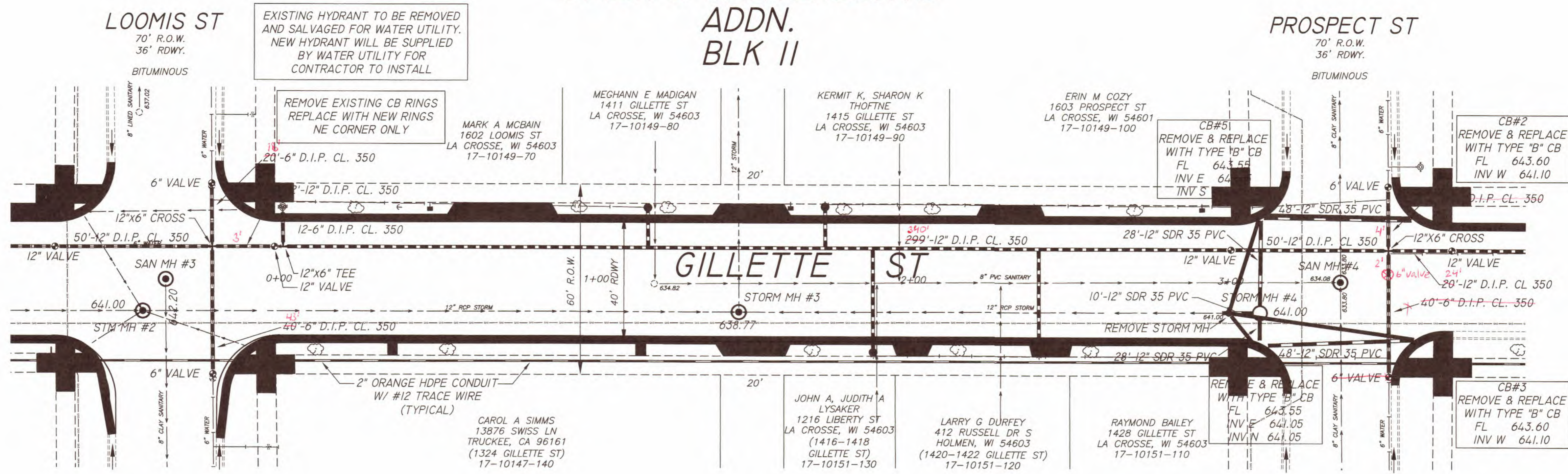


EDF #	19-011	DWG NAME:	gillette_george-onalaska.dwg
PROJECT No.	2019 CURB & GUTTER WITH UTILITIES		
LOCATION	GILLETTE STREET GEORGE ST to ONALASKA AVE		
RESOLUTION		DATE	
ENGINEERING DEPT. City of La Crosse, Wis.			
FIELD BOOK	SURVEYED	BY	DATE
NUMBER	DRAWN	BY	DATE
	CHECKED	BY	DATE
	DESIGNED	BY	DATE
	REVISIONS		
PAGE	As-6mitts		
SHEET NO. 6	TOTAL SHEETS 16		

1ST ADDN.
SPIER & CANTERBURYS
ADDN.
BLK II



ELEVATIONS SHOWN ARE NAVD 88



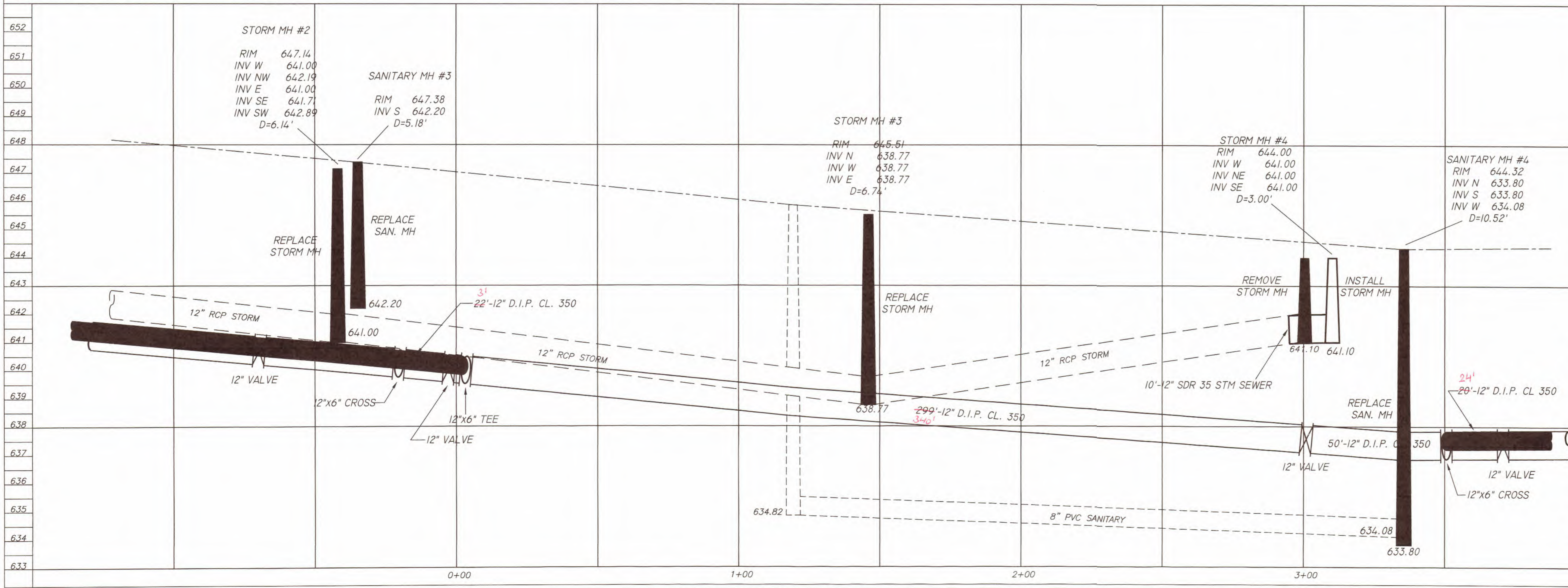
ALL WATER MAIN SHALL BE ENCASED IN POLYETHYLENE WRAP AS SPECIFIED

EXISTING LONG WATER SERVICES TO BE ABANDONED IN PLACE TAP 12" MAIN WITH NEW 1" CORPORATION RUN NEW 1" COPPER TO NEW 1" CURB STOP AND BOX

CITY OF LA CROSSE WILL PROVIDE ALL CASTINGS AS NEEDED FOR REPLACEMENT OR NEW STRUCTURES

BENCHMARKS
TOP NUT OF HYDRANT
GILLETTE ST & LOOMIS ST 650.50
GILLETTE ST & PROSPECT ST 647.10

NOTE
CONTRACTOR IS TO VERIFY LOCATION OF ALL UTILITIES PRIOR TO ANY CONSTRUCTION



641	EDF # 19-011	DWG NAME: gillette_george-analaska.dwg
640	PROJECT No.	2019 CURB & GUTTER WITH UTILITIES
639	LOCATION	GILLETTE STREET GEORGE ST to ONALASKA AVE
638	RESOLUTION	DATE
637	ENGINEERING DEPT.	
636	City of La Crosse, Wis.	
635	FIELD BOOK	SURVEYED BY DATE
634	NUMBER	DRAWN PRELIMINARY 1W 11/2018
633	PAGE	CHECKED FINAL 8FW 01/2019
		DESIGNED 1W2 03/2019
		REVISIONS 1W 09/2019
	SHEET NO. 8	TOTAL SHEETS 16