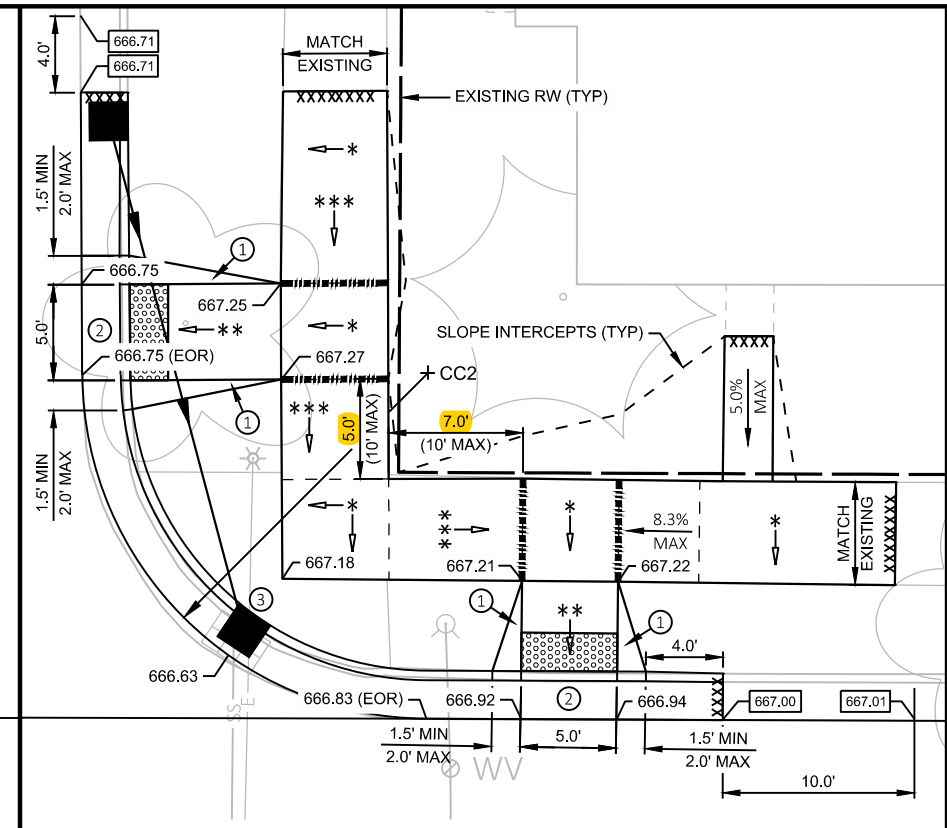


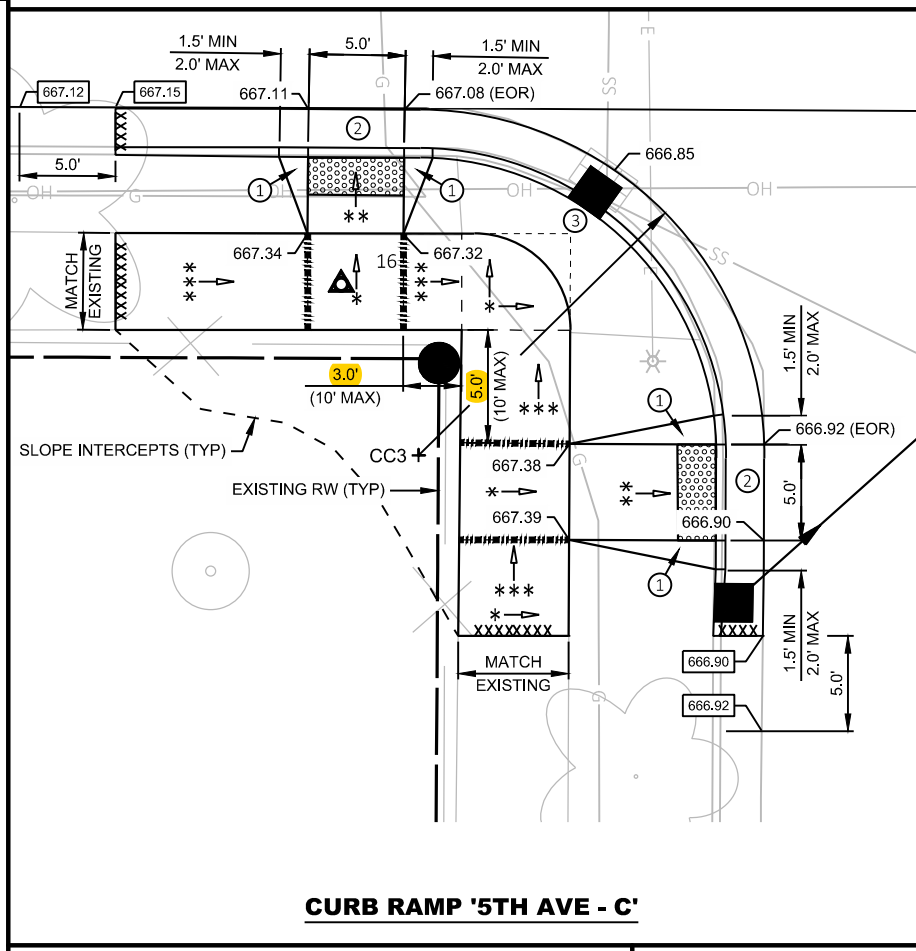
CURB RAMP '5TH AVE - A'



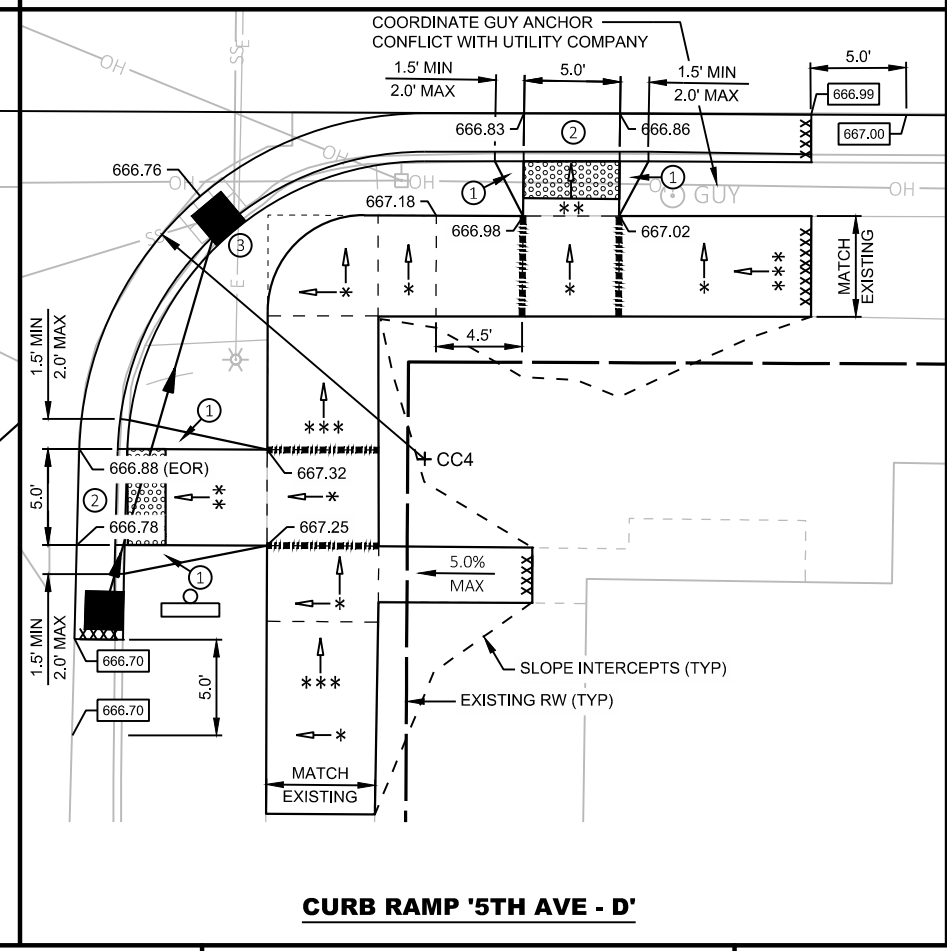
CURB RAMP '5TH AVE - B'

| RADIUS POINT TABLE | | |
|--------------------|----------------------------------|--------|
| POINT | COORDINATES | RADIUS |
| CC1 | Y = 127770.240 X = 445508.960 | 18.0' |
| CC2 | Y = 127770.077 X = 445576.945 | 18.0' |
| CC3 | Y = 127694.123 X = 445508.314 | 18.0' |
| CC4 | Y = 127693.846 X = 445576.236 | 18.0' |

- LEGEND**
- * 1.5% MAX CROSS SLOPE
 - ** 7.0% MAX LONGITUDINAL SLOPE
 - *** 5.0% MAX LONGITUDINAL
 - DIRECTION OF SLOPE (TYP)
 - ▬ EXPANSION JOINT
 - XXXX SAWCUT REQ'D (SIDEWALK SAWCUTS TO BE AT NEAREST EXISTING JOINT)
 - R1-1 (STOP SIGN)  R1-1 30"x30"
 -  DETECTABLE WARNING FIELD
 - 666.84 EXISTING ELEVATION
 - +XX.XX STATION, OFFSET
 - +XX.X' LT/RT
 - ① 10:1 MAX FLARE
 - ② GUTTER CROSS SLOPE AT CURB RAMP 4%
CURB HEAD OPENING MAX SLOPE 7%
 - ③ ADJUST INLET CASTING REQ'D
 - ⊗ CURB RAMP TYPE AS PER WISDOT SDD 8d5



CURB RAMP '5TH AVE - C'



CURB RAMP '5TH AVE - D'

