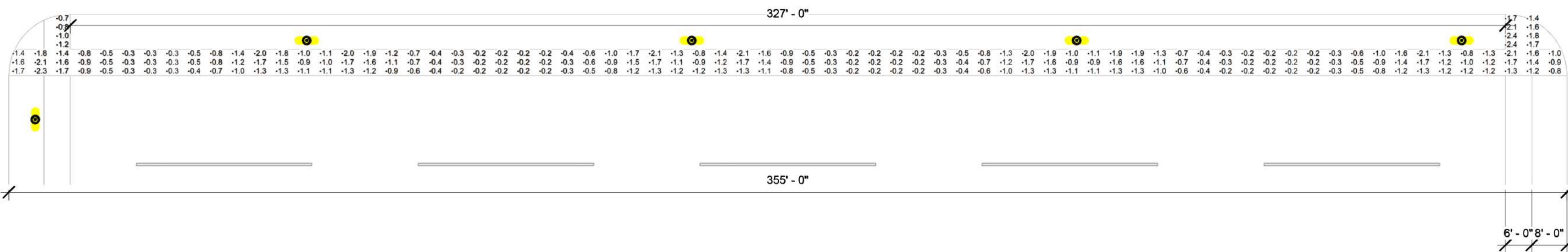


OPTION 1A: LUMEC: METROSCAPE TYPE 1, 2597LM, COMFORT OPTIC



OPTION 1B: LUMEC: METROSCAPE TYPE 1, 2597LM, COMFORT OPTIC

1 SIDEWALK LIGHTING OPTION 1A (8 FIXTURES PER BLOCK) SCALE: 1" = 20'-0"

2 SIDEWALK LIGHTING OPTION 1B PLAN (6 FIXTURES PER BLOCK) SCALE: 1" = 20'-0"

LEVEL ONE
0' - 0"

SIDEWALK ILLUMINANCE			
Calculation Points Name	Average	Maximum	Minimum
CASS FIXTURE A : (8) POLES PER BLOCK	0.8 fc	2.8 fc	0.1 fc
CASS FIXTURE B : (6) POLES PER BLOCK	0.7 fc	2.8 fc	0.0 fc
OPTION 1A : (8) POLES PER BLOCK	0.9 fc	2.4 fc	0.2 fc
OPTION 1B : (6) POLES PER BLOCK	0.7 fc	2.4 fc	0.0 fc
OPTION 2A : (8) POLES PER BLOCK	0.6 fc	3.6 fc	0.1 fc
OPTION 2B : (6) POLES PER BLOCK	0.5 fc	3.6 fc	0.0 fc
OPTION 3A : (8) POLES PER BLOCK	0.4 fc	3.1 fc	0.0 fc
OPTION 3B : (6) POLES PER BLOCK	0.3 fc	3.1 fc	0.0 fc
OPTION 4A : (8) POLES PER BLOCK	0.4 fc	1.2 fc	0.1 fc
OPTION 4B : (6) POLES PER BLOCK	0.3 fc	1.2 fc	0.0 fc
OPTION 5A : (8) POLES PER BLOCK	0.5 fc	1.4 fc	0.2 fc
OPTION 5B : (6) POLES PER BLOCK	0.4 fc	1.4 fc	0.1 fc

SIDEWALK LIGHTING - GENERAL NOTES

- A INSTALLATION SHALL CONFORM TO ALL APPLICABLE NEC, UL, STATE AND LOCAL CODES.
- B FIXTURE LAYOUT IS FOR A 355' LONG BLOCK. DESIGN SHALL BE ADJUSTED TO ACCOMMODATE FOR DIFFERENCES IN BLOCK LENGTH AND OBSTRUCTIONS.
- C IT IS RECOMMENDED THAT THE CITY PROCURE AND INSTALL A MOCKUP FIXTURE FOR REVIEW PRIOR TO ORDERING ALL FIXTURES FOR FINAL VERIFICATION OF OPTIONS AND OPTICAL CONTROLS.
- D DRAWINGS INDICATE PRELIMINARY CALCULATIONS TO COMPARE FIXTURE OPTIONS AND AID OWNER IN MAKING A FIXTURE SELECTION. ONCE A FIXTURE SELECTION IS MADE, INCLUDING FINAL PHOTOMETRIC DISTRIBUTION AND LENS OPTIONS, FINAL CALCS SHALL BE PERFORMED TO CONFIRM DESIGN.

THIS DRAWING INDICATES LIGHTING EQUIPMENT LAYOUT AND DESIGN OF LIGHTING SYSTEMS. REVIEW BY A QUALIFIED ENGINEER IS NECESSARY TO ASSURE SAFETY AND CODE COMPLIANCE.

FOR REFERENCE ONLY

REFER TO E-SERIES DRAWINGS FOR ELECTRICAL FEEDS, DISCONNECT SWITCHES, CONDUIT, AND WIRE FOR ALL LIGHTING EQUIPMENT. DIVISION 26 CONTRACTOR SHALL PROVIDE AND INSTALL ALL LIGHTING EQUIPMENT AND CONTROL WIRING FOR A COMPLETE AND OPERABLE SYSTEM.

PRELIMINARY NOT FOR CONSTRUCTION

THEATRE PLANNERS / LIGHTING DESIGNERS
Schuler Shook
219 MAIN STREET SE, SUITE 200
MINNEAPOLIS, MN 55414
T 612 339 5956 F 612 337 5097
schulershook.com

Federal copyright laws protect the intellectual property of designers by giving copyright protection to plans and designs. The use of these plans and specifications shall be restricted to the original site for which they were prepared and publication thereof is expressly limited to such use. Reproduction, publication, or reuse by any method, in whole or in part, is prohibited. Plans cannot be modified or redrawn without the copyright owner's written approval. Title to the plans and specifications remain with Schuler Shook without prejudice.

THIS DRAWING INDICATES GENERAL LIGHTING LAYOUT AND DESIGN OF LIGHTING SYSTEMS. REVIEW BY A QUALIFIED ENGINEER IS NECESSARY TO ASSURE SAFETY AND CODE COMPLIANCE.

PRELIMINARY CALCULATIONS

NEIGHBORHOOD LIGHTING HISTORIC DISTRICT

Owner: City of La Crosse

Scale: As indicated

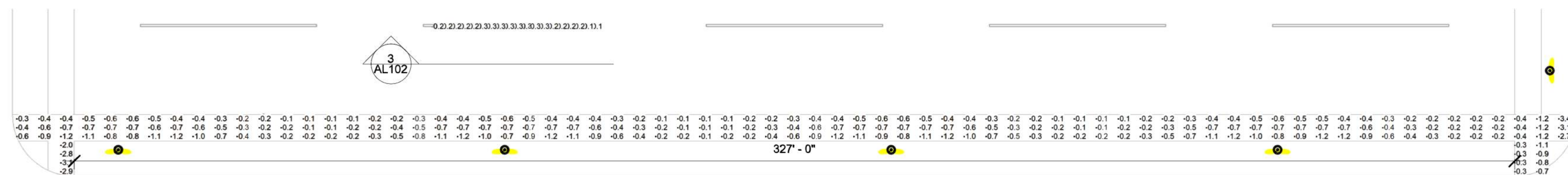
Layout By: MAL

Date: 03-09-2021

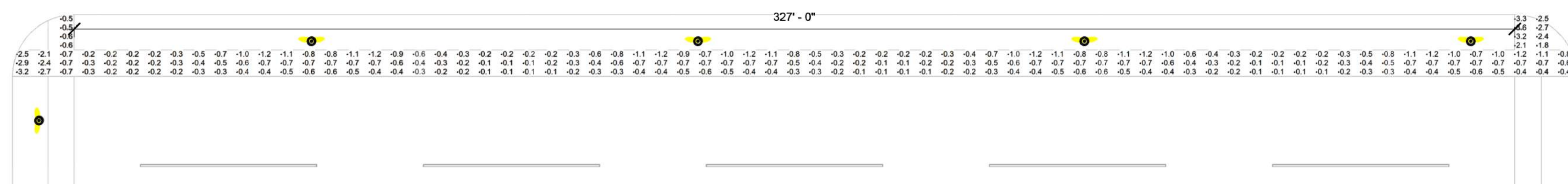
No.	Description	Date

SIDEWALK LIGHTING OPTION 1
10' POLES
OPTICS ROTATED
TOWARD STREET

AL101

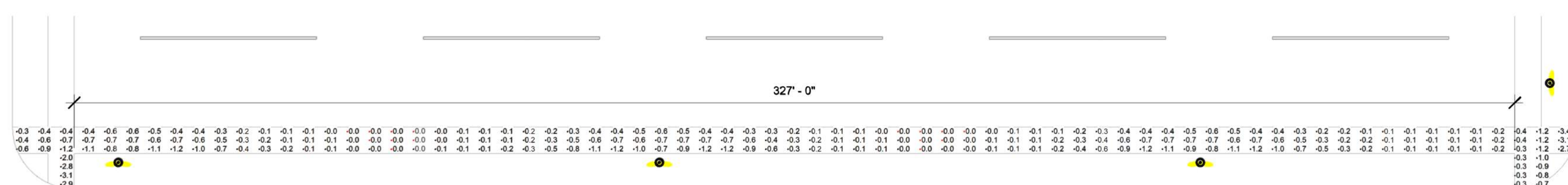


OPTION 2A: STERNBERG CARSON CITY
TYPE 2, 2500LM, LIGHTLY DIFFUSED CAGE LENS

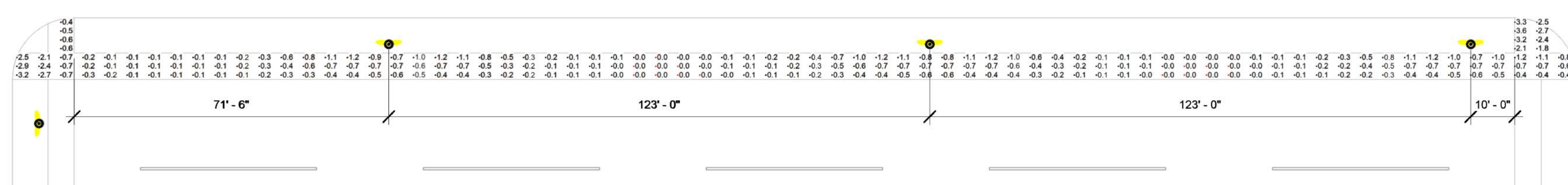


OPTION 2B: STERNBERG CARSON CITY
TYPE 2, 2500LM, LIGHTLY DIFFUSED CAGE LENS

1 SIDEWALK LIGHTING OPTION 2A PLAN (8 FIXTURES PER BLOCK)
SCALE: 1" = 20'-0"



2 SIDEWALK LIGHTING OPTION 2B PLAN (6 FIXTURES PER BLOCK)
SCALE: 1" = 20'-0"



LEVEL ONE
0' - 0"

3 VERTICAL LIGHT ON ADJACENT RESIDENCES
SCALE: 1/8" = 1'-0"

THIS DRAWING INDICATES LIGHTING EQUIPMENT LAYOUT AND DESIGN OF LIGHTING SYSTEMS. REVIEW BY A QUALIFIED ENGINEER IS NECESSARY TO ASSURE SAFETY AND CODE COMPLIANCE.

FOR REFERENCE ONLY

REFER TO E-SERIES DRAWINGS FOR ELECTRICAL FEEDS, DISCONNECT SWITCHES, CONDUIT, AND WIRE FOR ALL LIGHTING EQUIPMENT. DIVISION 26 CONTRACTOR SHALL PROVIDE AND INSTALL ALL LIGHTING EQUIPMENT AND CONTROL WIRING FOR A COMPLETE AND OPERABLE SYSTEM.

PRELIMINARY
NOT FOR CONSTRUCTION

THEATRE PLANNERS / LIGHTING DESIGNERS
Schuler Shook
219 MAIN STREET SE, SUITE 200
MINNEAPOLIS, MN 55414
T 612 339 5956 F 612 337 5097
schulershook.com

Federal copyright laws protect the intellectual property of designers by giving copyright protection to plans and designs. The use of these plans and specifications shall be restricted to the original site for which they were prepared and publication thereof is expressly limited to such use. Reproduction, publication, or reuse by any method, in whole or in part, is prohibited. Plans cannot be modified or redrawn without the copyright owner's written approval. Title to the plans and specifications remain with Schuler Shook without prejudice.

THIS DRAWING INDICATES GENERAL LIGHTING LAYOUT AND DESIGN OF LIGHTING SYSTEMS. REVIEW BY A QUALIFIED ENGINEER IS NECESSARY TO ASSURE SAFETY AND CODE COMPLIANCE.

PRELIMINARY CALCULATIONS

NEIGHBORHOOD LIGHTING HISTORIC DISTRICT

Owner:
City of La Crosse

Scale: As indicated
Layout By: MAL
Date: 03-09-2021

No.	Description	Date

SIDEWALK LIGHTING OPTION 2

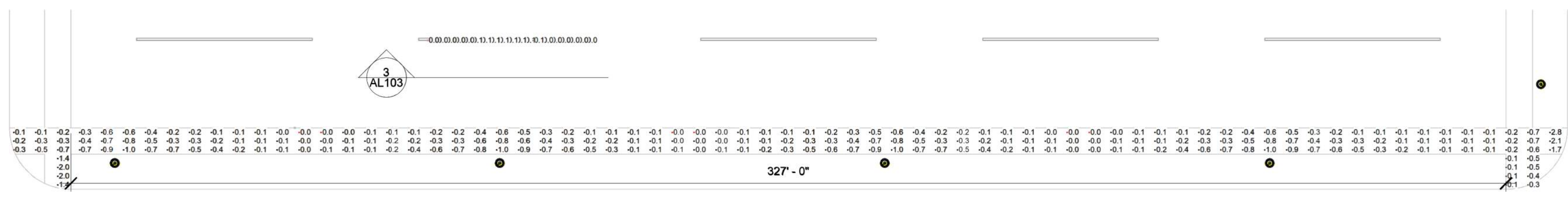
10' POLES
OPTICS ROTATED
TOWARD STREET

AL102

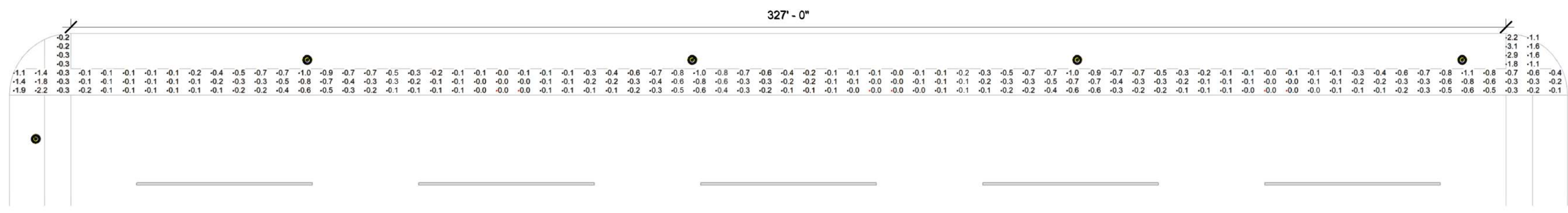
SIDEWALK ILLUMINANCE			
Calculation Points Name	Average	Maximum	Minimum
CASS FIXTURE A : (8) POLES PER BLOCK	0.8 fc	2.8 fc	0.1 fc
CASS FIXTURE B : (6) POLES PER BLOCK	0.7 fc	2.8 fc	0.0 fc
OPTION 1A : (8) POLES PER BLOCK	0.9 fc	2.4 fc	0.2 fc
OPTION 1B : (6) POLES PER BLOCK	0.7 fc	2.4 fc	0.0 fc
OPTION 2A : (8) POLES PER BLOCK	0.6 fc	3.6 fc	0.1 fc
OPTION 2B : (6) POLES PER BLOCK	0.5 fc	3.6 fc	0.0 fc
OPTION 3A : (8) POLES PER BLOCK	0.4 fc	3.1 fc	0.0 fc
OPTION 3B : (6) POLES PER BLOCK	0.3 fc	3.1 fc	0.0 fc
OPTION 4A : (8) POLES PER BLOCK	0.4 fc	1.2 fc	0.1 fc
OPTION 4B : (6) POLES PER BLOCK	0.3 fc	1.2 fc	0.0 fc
OPTION 5A : (8) POLES PER BLOCK	0.5 fc	1.4 fc	0.2 fc
OPTION 5B : (6) POLES PER BLOCK	0.4 fc	1.4 fc	0.1 fc

SIDEWALK LIGHTING - GENERAL NOTES

- A INSTALLATION SHALL CONFORM TO ALL APPLICABLE NEC, UL, STATE AND LOCAL CODES.
- B FIXTURE LAYOUT IS FOR A 355' LONG BLOCK. DESIGN SHALL BE ADJUSTED TO ACCOMMODATE FOR DIFFERENCES IN BLOCK LENGTH AND OBSTRUCTIONS.
- C IT IS RECOMMENDED THAT THE CITY PROCURE AND INSTALL A MOCKUP FIXTURE FOR REVIEW PRIOR TO ORDERING ALL FIXTURES FOR FINAL VERIFICATION OF OPTIONS AND OPTICAL CONTROLS.
- D DRAWINGS INDICATE PRELIMINARY CALCULATIONS TO COMPARE FIXTURE OPTIONS AND AID OWNER IN MAKING A FIXTURE SELECTION. ONCE A FIXTURE SELECTION IS MADE, INCLUDING FINAL PHOTOMETRIC DISTRIBUTION AND LENS OPTIONS, FINAL CALCS SHALL BE PERFORMED TO CONFIRM DESIGN.

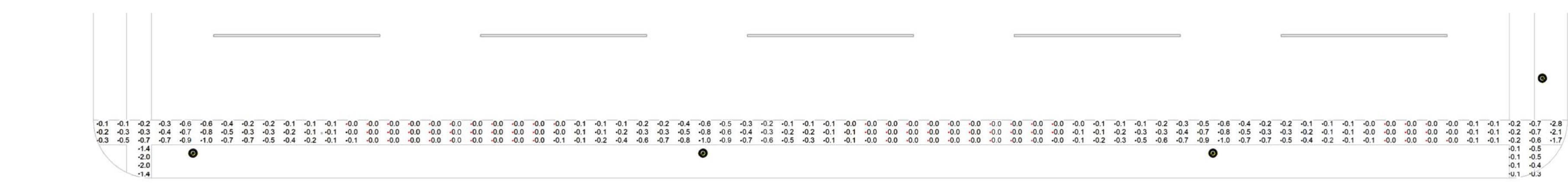


OPTION 3A: LUMCA COSMO
TYPE 1, 1700LM, FROSTED LENS OPTIC

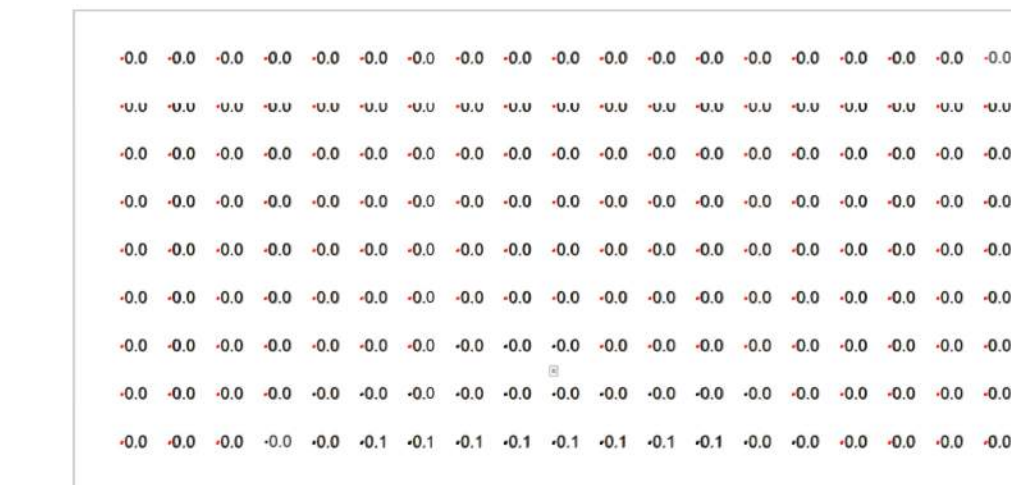
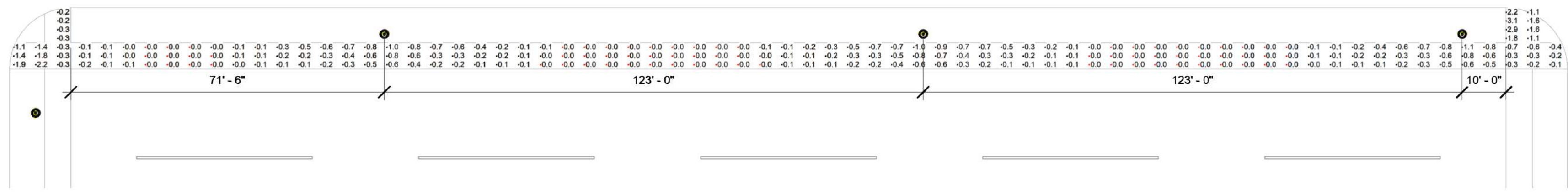


OPTION 3B: LUMCA COSMO
TYPE 1, 1700LM, FROSTED LENS OPTIC

1 SIDEWALK LIGHTING OPTION 3A PLAN (8 FIXTURES PER BLOCK)
SCALE: 1" = 20'-0"



2 SIDEWALK LIGHTING OPTION 3B PLAN (6 FIXTURES PER BLOCK)
SCALE: 1" = 20'-0"



3 VERTICAL LIGHT ON ADJACENT RESIDENCES
SCALE: 1/8" = 1'-0"

SIDEWALK ILLUMINANCE			
Calculation Points Name	Average	Maximum	Minimum
CASS FIXTURE A : (8) POLES PER BLOCK	0.8 fc	2.8 fc	0.1 fc
CASS FIXTURE B : (6) POLES PER BLOCK	0.7 fc	2.8 fc	0.0 fc
OPTION 1A : (8) POLES PER BLOCK	0.9 fc	2.4 fc	0.2 fc
OPTION 1B : (6) POLES PER BLOCK	0.7 fc	2.4 fc	0.0 fc
OPTION 2A : (8) POLES PER BLOCK	0.6 fc	3.6 fc	0.1 fc
OPTION 2B : (6) POLES PER BLOCK	0.5 fc	3.6 fc	0.0 fc
OPTION 3A : (8) POLES PER BLOCK	0.4 fc	3.1 fc	0.0 fc
OPTION 3B : (6) POLES PER BLOCK	0.3 fc	3.1 fc	0.0 fc
OPTION 4A : (8) POLES PER BLOCK	0.4 fc	1.2 fc	0.1 fc
OPTION 4B : (6) POLES PER BLOCK	0.3 fc	1.2 fc	0.0 fc
OPTION 5A : (8) POLES PER BLOCK	0.5 fc	1.4 fc	0.2 fc
OPTION 5B : (6) POLES PER BLOCK	0.4 fc	1.4 fc	0.1 fc

SIDEWALK LIGHTING - GENERAL NOTES

- A INSTALLATION SHALL CONFORM TO ALL APPLICABLE NEC, UL, STATE AND LOCAL CODES.
- B FIXTURE LAYOUT IS FOR A 355' LONG BLOCK. DESIGN SHALL BE ADJUSTED TO ACCOMMODATE FOR DIFFERENCES IN BLOCK LENGTH AND OBSTRUCTIONS.
- C IT IS RECOMMENDED THAT THE CITY PROCURE AND INSTALL A MOCKUP FIXTURE FOR REVIEW PRIOR TO ORDERING ALL FIXTURES FOR FINAL VERIFICATION OF OPTIONS AND OPTICAL CONTROLS.
- D DRAWINGS INDICATE PRELIMINARY CALCULATIONS TO COMPARE FIXTURE OPTIONS AND AID OWNER IN MAKING A FIXTURE SELECTION. ONCE A FIXTURE SELECTION IS MADE, INCLUDING FINAL PHOTOMETRIC DISTRIBUTION AND LENS OPTIONS, FINAL CALCS SHALL BE PERFORMED TO CONFIRM DESIGN.

THIS DRAWING INDICATES LIGHTING EQUIPMENT LAYOUT AND DESIGN OF LIGHTING SYSTEMS. REVIEW BY A QUALIFIED ENGINEER IS NECESSARY TO ASSURE SAFETY AND CODE COMPLIANCE.

FOR REFERENCE ONLY

REFER TO E-SERIES DRAWINGS FOR ELECTRICAL FEEDS, DISCONNECT SWITCHES, CONDUIT, AND WIRE FOR ALL LIGHTING EQUIPMENT. DIVISION 26 CONTRACTOR SHALL PROVIDE AND INSTALL ALL LIGHTING EQUIPMENT AND CONTROL WIRING FOR A COMPLETE AND OPERABLE SYSTEM.

PRELIMINARY
NOT FOR CONSTRUCTION

Schuler Shook
219 MAIN STREET SE, SUITE 200
MINNEAPOLIS, MN 55414
T 612 339 5956 F 612 337 5097
schulershook.com

Federal copyright laws protect the intellectual property of designers by giving copyright protection to plans and designs. The use of these plans and specifications shall be restricted to the original site for which they were prepared and publication thereof is expressly limited to such use. Reproduction, publication, or reuse by any method, in whole or in part, is prohibited. Plans cannot be modified or redrawn without the copyright owner's written approval. Title to the plans and specifications remain with Schuler Shook without prejudice.

THIS DRAWING INDICATES GENERAL LIGHTING LAYOUT AND DESIGN OF LIGHTING SYSTEMS. REVIEW BY A QUALIFIED ENGINEER IS NECESSARY TO ASSURE SAFETY AND CODE COMPLIANCE.

PRELIMINARY CALCULATIONS

NEIGHBORHOOD LIGHTING HISTORIC DISTRICT

Owner:
City of La Crosse

Scale: As indicated
Layout By: MAL
Date: 03-09-2021

No.	Description	Date

SIDEWALK LIGHTING OPTION 3

10' POLES
OPTICS ROTATED
TOWARD STREET

AL103

Federal copyright laws protect the intellectual property of designers by giving copyright protection to plans and designs. The use of these plans and specifications shall be restricted to the original site for which they were prepared and publication thereof is expressly limited to such use. Reproduction, publication, or reuse by any method, in whole or in part, is prohibited. Plans cannot be modified or redrawn without the copyright owner's written approval. Title to the plans and specifications remain with Schuler Shook without prejudice.

THIS DRAWING INDICATES LIGHTING EQUIPMENT LAYOUT AND DESIGN OF LIGHTING SYSTEMS. REVIEW BY A QUALIFIED ENGINEER IS NECESSARY TO ASSURE SAFETY AND CODE COMPLIANCE.

FOR REFERENCE ONLY

REFER TO E-SERIES DRAWINGS FOR ELECTRICAL FEEDS, DISCONNECT SWITCHES, CONDUIT, AND WIRE FOR ALL LIGHTING EQUIPMENT. DIVISION 26 CONTRACTOR SHALL PROVIDE AND INSTALL ALL LIGHTING EQUIPMENT AND CONTROL WIRING FOR A COMPLETE AND OPERABLE SYSTEM.

PRELIMINARY
NOT FOR CONSTRUCTION

THIS DRAWING INDICATES GENERAL LIGHTING LAYOUT AND DESIGN OF LIGHTING SYSTEMS. REVIEW BY A QUALIFIED ENGINEER IS NECESSARY TO ASSURE SAFETY AND CODE COMPLIANCE.

PRELIMINARY CALCULATIONS

NEIGHBORHOOD LIGHTING HISTORIC DISTRICT

Owner:
City of La Crosse

Scale: As indicated

Layout By: MAL

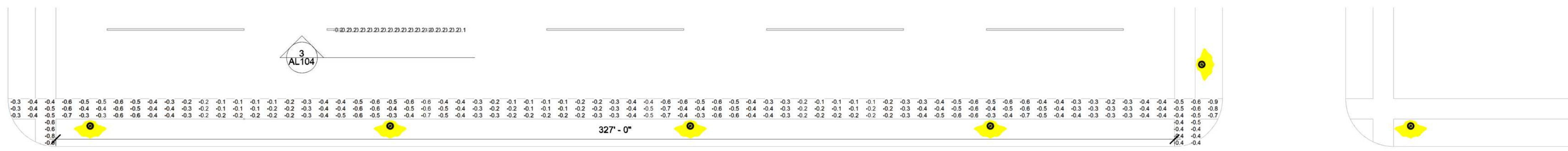
Date: 03-09-2021

No.	Description	Date

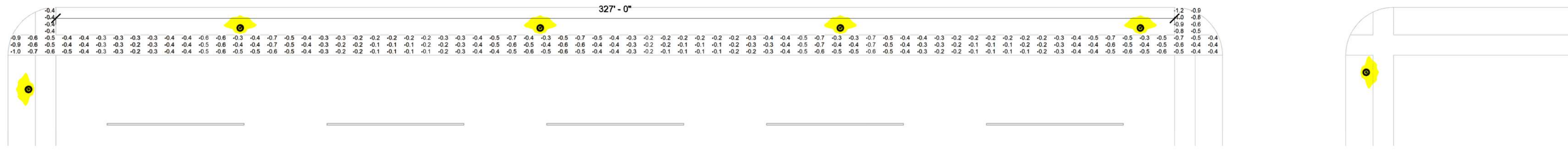
SIDEWALK LIGHTING OPTION 4

10' POLES OPTICS ROTATED TOWARD STREET

AL104



OPTION 4A HOLOPHANE GRANVILLE TYPE 3, 3300LM, PRISMATIC GLASS



OPTION 4B: HOLOPHANE GRANVILLE TYPE 3, 3300LM, PRISMATIC GLASS

1 SIDEWALK LIGHTING OPTION 4A PLAN (8 FIXTURES PER BLOCK)

AL104 SCALE: 1" = 20'-0"

2 SIDEWALK LIGHTING OPTION 4B PLAN (6 FIXTURES PER BLOCK)

AL104 SCALE: 1" = 20'-0"

SIDEWALK ILLUMINANCE

Calculation Points Name	Average	Maximum	Minimum
CASS FIXTURE A : (8) POLES PER BLOCK	0.8 fc	2.8 fc	0.1 fc
CASS FIXTURE B : (6) POLES PER BLOCK	0.7 fc	2.8 fc	0.0 fc
OPTION 1A : (8) POLES PER BLOCK	0.9 fc	2.4 fc	0.2 fc
OPTION 1B : (6) POLES PER BLOCK	0.7 fc	2.4 fc	0.0 fc
OPTION 2A : (8) POLES PER BLOCK	0.6 fc	3.6 fc	0.1 fc
OPTION 2B : (6) POLES PER BLOCK	0.5 fc	3.6 fc	0.0 fc
OPTION 3A : (8) POLES PER BLOCK	0.4 fc	3.1 fc	0.0 fc
OPTION 3B : (6) POLES PER BLOCK	0.3 fc	3.1 fc	0.0 fc
OPTION 4A : (8) POLES PER BLOCK	0.4 fc	1.2 fc	0.1 fc
OPTION 4B : (6) POLES PER BLOCK	0.3 fc	1.2 fc	0.0 fc
OPTION 5A : (8) POLES PER BLOCK	0.5 fc	1.4 fc	0.2 fc
OPTION 5B : (6) POLES PER BLOCK	0.4 fc	1.4 fc	0.1 fc

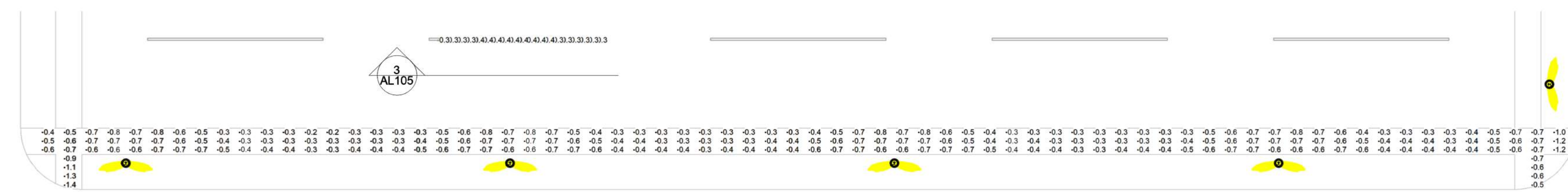
SIDEWALK LIGHTING - GENERAL NOTES

- A INSTALLATION SHALL CONFORM TO ALL APPLICABLE NEC, UL, STATE AND LOCAL CODES.
- B FIXTURE LAYOUT IS FOR A 355' LONG BLOCK. DESIGN SHALL BE ADJUSTED TO ACCOMMODATE FOR DIFFERENCES IN BLOCK LENGTH AND OBSTRUCTIONS.
- C IT IS RECOMMENDED THAT THE CITY PROCURE AND INSTALL A MOCKUP FIXTURE FOR REVIEW PRIOR TO ORDERING ALL FIXTURES FOR FINAL VERIFICATION OF OPTIONS AND OPTICAL CONTROLS.
- D DRAWINGS INDICATE PRELIMINARY CALCULATIONS TO COMPARE FIXTURE OPTIONS AND AID OWNER IN MAKING A FIXTURE SELECTION. ONCE A FIXTURE SELECTION IS MADE, INCLUDING FINAL PHOTOMETRIC DISTRIBUTION AND LENS OPTIONS, FINAL CALCS SHALL BE PERFORMED TO CONFIRM DESIGN.

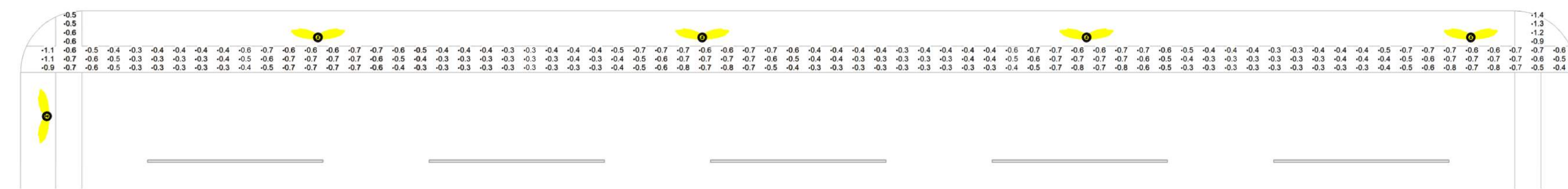
0.1	0.1	0.1	0.1	0.1	0.1	0.1	0.1	0.1	0.1	0.1	0.1	0.1	0.1	0.1
0.1	0.1	0.1	0.1	0.1	0.1	0.1	0.1	0.1	0.1	0.1	0.1	0.1	0.1	0.1
0.1	0.1	0.1	0.1	0.1	0.1	0.1	0.1	0.1	0.1	0.1	0.1	0.1	0.1	0.1
0.1	0.1	0.1	0.1	0.1	0.1	0.1	0.1	0.1	0.1	0.1	0.1	0.1	0.1	0.1
0.1	0.1	0.1	0.1	0.1	0.1	0.1	0.1	0.1	0.1	0.1	0.1	0.1	0.1	0.1
0.1	0.1	0.1	0.1	0.1	0.1	0.1	0.1	0.1	0.1	0.1	0.1	0.1	0.1	0.1
0.1	0.1	0.1	0.1	0.1	0.1	0.1	0.1	0.1	0.1	0.1	0.1	0.1	0.1	0.1
0.1	0.1	0.1	0.1	0.1	0.1	0.1	0.1	0.1	0.1	0.1	0.1	0.1	0.1	0.1
0.1	0.1	0.1	0.1	0.1	0.1	0.1	0.1	0.1	0.1	0.1	0.1	0.1	0.1	0.1
0.1	0.1	0.1	0.1	0.1	0.1	0.1	0.1	0.1	0.1	0.1	0.1	0.1	0.1	0.1
0.1	0.1	0.1	0.1	0.1	0.1	0.1	0.1	0.1	0.1	0.1	0.1	0.1	0.1	0.1
0.1	0.1	0.1	0.1	0.1	0.1	0.1	0.1	0.1	0.1	0.1	0.1	0.1	0.1	0.1

3 VERTICAL LIGHT ON ADJACENT RESIDENCES

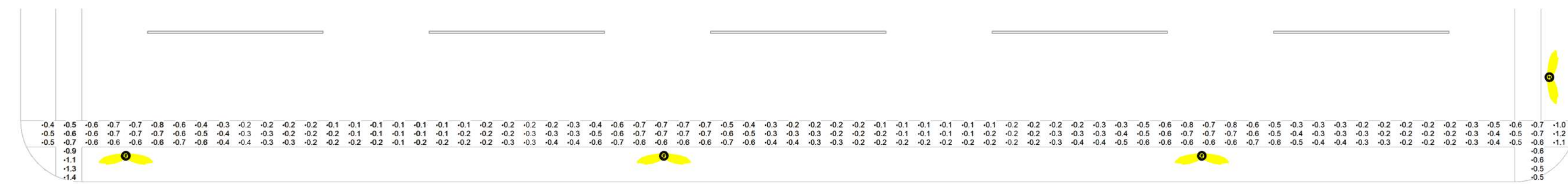
AL104 SCALE: 1/8" = 1'-0"



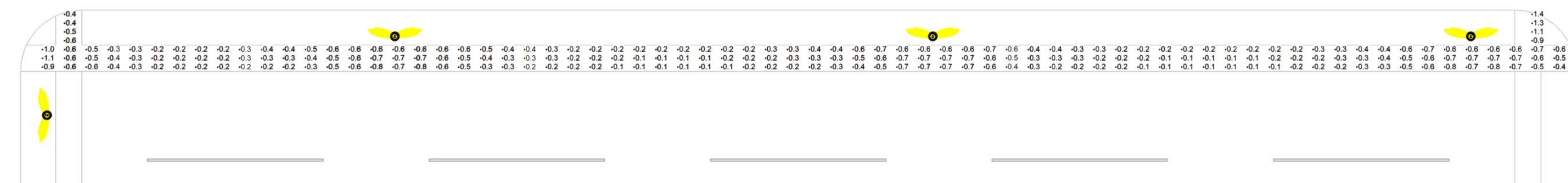
OPTION 5A: HOLOPHANE TAFT TYPE 3, 3500LM, PRISMATIC



1 SIDEWALK LIGHTING OPTION 5A PLAN (8 FIXTURES PER BLOCK)
SCALE: 1" = 20'-0"



OPTION 5B: HOLOPHANE TAFT TYPE 3, 3500LM, PRISMATIC



2 SIDEWALK LIGHTING OPTION 5A PLAN (6 FIXTURES PER BLOCK)
SCALE: 1" = 20'-0"

-0.1 -0.2 -0.2 -0.2 -0.2 -0.2 -0.2 -0.2 -0.2 -0.2 -0.2 -0.2 -0.2 -0.2 -0.1 -0.1
 -0.2 -0.2 -0.2 -0.2 -0.2 -0.2 -0.2 -0.2 -0.2 -0.2 -0.2 -0.2 -0.2 -0.2 -0.2 -0.2
 -0.2 -0.2 -0.2 -0.2 -0.2 -0.2 -0.2 -0.2 -0.2 -0.2 -0.2 -0.2 -0.2 -0.2 -0.2 -0.2
 -0.2 -0.2 -0.2 -0.2 -0.2 -0.2 -0.2 -0.2 -0.2 -0.2 -0.2 -0.2 -0.2 -0.2 -0.2 -0.2
 -0.2 -0.2 -0.2 -0.2 -0.2 -0.2 -0.2 -0.2 -0.2 -0.2 -0.2 -0.2 -0.2 -0.2 -0.2 -0.2
 -0.2 -0.2 -0.2 -0.2 -0.2 -0.2 -0.2 -0.2 -0.2 -0.2 -0.2 -0.2 -0.2 -0.2 -0.2 -0.2
 -0.2 -0.2 -0.2 -0.2 -0.2 -0.2 -0.2 -0.2 -0.2 -0.2 -0.2 -0.2 -0.2 -0.2 -0.2 -0.2
 -0.2 -0.2 -0.2 -0.2 -0.2 -0.2 -0.2 -0.2 -0.2 -0.2 -0.2 -0.2 -0.2 -0.2 -0.2 -0.2
 -0.2 -0.2 -0.2 -0.2 -0.2 -0.2 -0.2 -0.2 -0.2 -0.2 -0.2 -0.2 -0.2 -0.2 -0.2 -0.2

SIDEWALK ILLUMINANCE			
Calculation Points Name	Average	Maximum	Minimum
CASS FIXTURE A : (8) POLES PER BLOCK	0.8 fc	2.8 fc	0.1 fc
CASS FIXTURE B : (6) POLES PER BLOCK	0.7 fc	2.8 fc	0.0 fc
OPTION 1A: (8) POLES PER BLOCK	0.9 fc	2.4 fc	0.2 fc
OPTION 1B: (6) POLES PER BLOCK	0.7 fc	2.4 fc	0.0 fc
OPTION 2A: (8) POLES PER BLOCK	0.6 fc	3.6 fc	0.1 fc
OPTION 2B: (6) POLES PER BLOCK	0.5 fc	3.6 fc	0.0 fc
OPTION 3A: (8) POLES PER BLOCK	0.4 fc	3.1 fc	0.0 fc
OPTION 3B: (6) POLES PER BLOCK	0.3 fc	3.1 fc	0.0 fc
OPTION 4A: (8) POLES PER BLOCK	0.4 fc	1.2 fc	0.1 fc
OPTION 4B: (6) POLES PER BLOCK	0.3 fc	1.2 fc	0.0 fc
OPTION 5A: (8) POLES PER BLOCK	0.5 fc	1.4 fc	0.2 fc
OPTION 5B: (6) POLES PER BLOCK	0.4 fc	1.4 fc	0.1 fc

SIDEWALK LIGHTING - GENERAL NOTES

- A INSTALLATION SHALL CONFORM TO ALL APPLICABLE NEC, UL, STATE AND LOCAL CODES.
- B FIXTURE LAYOUT IS FOR A 355' LONG BLOCK. DESIGN SHALL BE ADJUSTED TO ACCOMMODATE FOR DIFFERENCES IN BLOCK LENGTH AND OBSTRUCTIONS.
- C IT IS RECOMMENDED THAT THE CITY PROCURE AND INSTALL A MOCKUP FIXTURE FOR REVIEW PRIOR TO ORDERING ALL FIXTURES FOR FINAL VERIFICATION OF OPTIONS AND OPTICAL CONTROLS.
- D DRAWINGS INDICATE PRELIMINARY CALCULATIONS TO COMPARE FIXTURE OPTIONS AND AID OWNER IN MAKING A FIXTURE SELECTION. ONCE A FIXTURE SELECTION IS MADE, INCLUDING FINAL PHOTOMETRIC DISTRIBUTION AND LENS OPTIONS, FINAL CALCS SHALL BE PERFORMED TO CONFIRM DESIGN.

3 VERTICAL LIGHT ON ADJACENT RESIDENCES
SCALE: 1/8" = 1'-0"

THIS DRAWING INDICATES LIGHTING EQUIPMENT LAYOUT AND DESIGN OF LIGHTING SYSTEMS. REVIEW BY A QUALIFIED ENGINEER IS NECESSARY TO ASSURE SAFETY AND CODE COMPLIANCE.

FOR REFERENCE ONLY

REFER TO E-SERIES DRAWINGS FOR ELECTRICAL FEEDS, DISCONNECT SWITCHES, CONDUIT, AND WIRE FOR ALL LIGHTING EQUIPMENT. DIVISION 26 CONTRACTOR SHALL PROVIDE AND INSTALL ALL LIGHTING EQUIPMENT AND CONTROL WIRING FOR A COMPLETE AND OPERABLE SYSTEM.

PRELIMINARY
NOT FOR CONSTRUCTION

Schuler Shook
THEATRE PLANNERS / LIGHTING DESIGNERS
219 MAIN STREET SE, SUITE 200
MINNEAPOLIS, MN 55414
T 612 339 5956 F 612 337 5097
schulershook.com

Federal copyright laws protect the intellectual property of designers by giving copyright protection to plans and designs. The use of these plans and specifications shall be restricted to the original site for which they were prepared and publication thereof is expressly limited to such use. Reproduction, publication, or reuse by any method, in whole or in part, is prohibited. Plans cannot be modified or redrawn without the copyright owner's written approval. Title to the plans and specifications remain with Schuler Shook without prejudice.

THIS DRAWING INDICATES GENERAL LIGHTING LAYOUT AND DESIGN OF LIGHTING SYSTEMS. REVIEW BY A QUALIFIED ENGINEER IS NECESSARY TO ASSURE SAFETY AND CODE COMPLIANCE.

PRELIMINARY CALCULATIONS

NEIGHBORHOOD LIGHTING HISTORIC DISTRICT

Owner:
City of La Crosse

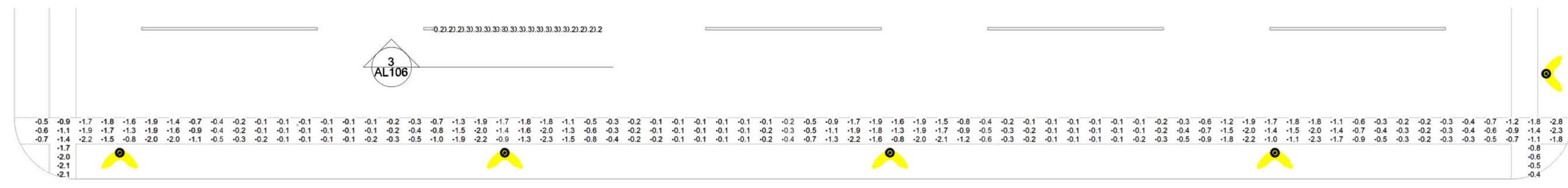
Scale: As indicated
Layout By: MAL
Date: 03-09-2021

No.	Description	Date

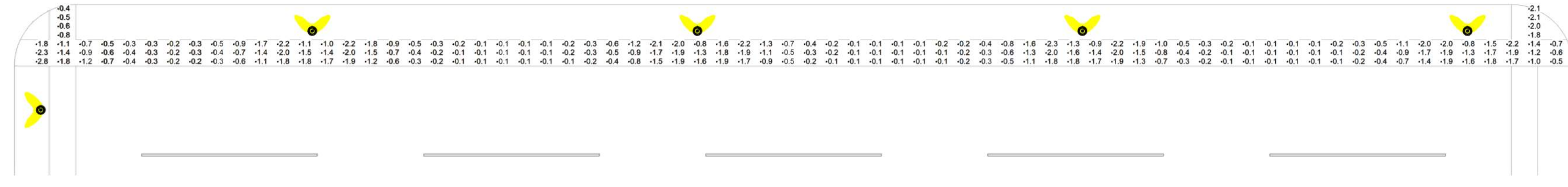
SIDEWALK LIGHTING OPTION 5

10' POLES
OPTICS ROTATED
TOWARD STREET

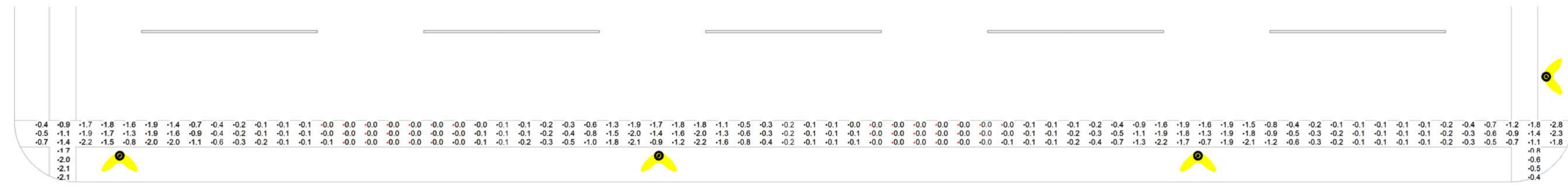
AL105



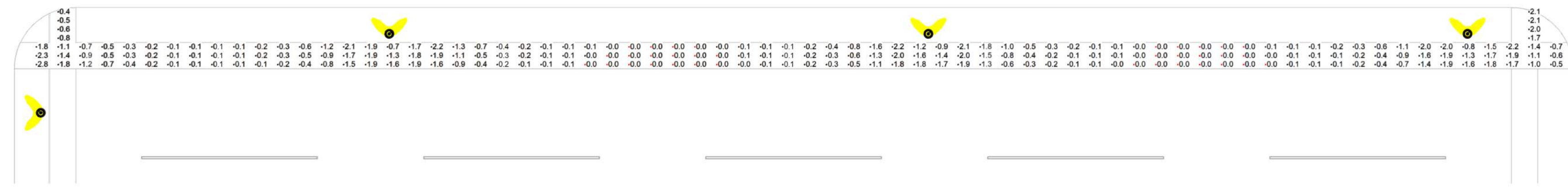
CASS ST. FIXTURE A (8 POLES PER BLOCK):: HOLOPHANE TAFT TYPE 3, FLAT LENS



1 SIDEWALK LIGHTING CASS ST. FIXTURE (8 FIXTURES PER BLOCK)
AL106 SCALE: 1" = 20'-0"



CASS ST. FIXTURE B (6 POLES PER BLOCK): HOLOPHANE TAFT TYPE 3, FLAT LENS



2 SIDEWALK LIGHTING CASS ST. FIXTURE (6 FIXTURES PER BLOCK)
AL106 SCALE: 1" = 20'-0"

-0.1 -0.1 -0.1 -0.1 -0.1 -0.1 -0.1 -0.1 -0.1 -0.1 -0.1 -0.1 -0.1 -0.1 -0.1 -0.1
-0.1 -0.1 -0.1 -0.1 -0.1 -0.1 -0.1 -0.1 -0.1 -0.1 -0.1 -0.1 -0.1 -0.1 -0.1 -0.1
-0.1 -0.1 -0.1 -0.1 -0.1 -0.1 -0.1 -0.1 -0.1 -0.1 -0.1 -0.1 -0.1 -0.1 -0.1 -0.1
-0.1 -0.1 -0.1 -0.1 -0.1 -0.1 -0.1 -0.1 -0.1 -0.1 -0.1 -0.1 -0.1 -0.1 -0.1 -0.1
-0.1 -0.1 -0.1 -0.1 -0.1 -0.1 -0.1 -0.1 -0.1 -0.1 -0.1 -0.1 -0.1 -0.1 -0.1 -0.1
-0.1 -0.1 -0.1 -0.1 -0.1 -0.1 -0.1 -0.1 -0.1 -0.1 -0.1 -0.1 -0.1 -0.1 -0.1 -0.1
-0.1 -0.1 -0.1 -0.1 -0.1 -0.1 -0.1 -0.1 -0.1 -0.1 -0.1 -0.1 -0.1 -0.1 -0.1 -0.1
-0.2 -0.2 -0.2 -0.2 -0.2 -0.2 -0.2 -0.2 -0.2 -0.2 -0.2 -0.2 -0.2 -0.2 -0.2 -0.1
-0.2 -0.2 -0.2 -0.3 -0.3 -0.3 -0.3 -0.3 -0.3 -0.3 -0.3 -0.3 -0.3 -0.2 -0.2 -0.2

SIDEWALK ILLUMINANCE			
Calculation Points Name	Average	Maximum	Minimum
CASS FIXTURE A : (8) POLES PER BLOCK	0.8 fc	2.8 fc	0.1 fc
CASS FIXTURE B : (6) POLES PER BLOCK	0.7 fc	2.8 fc	0.0 fc
OPTION 1A : (8) POLES PER BLOCK	0.9 fc	2.4 fc	0.2 fc
OPTION 1B : (6) POLES PER BLOCK	0.7 fc	2.4 fc	0.0 fc
OPTION 2A : (8) POLES PER BLOCK	0.6 fc	3.6 fc	0.1 fc
OPTION 2B : (6) POLES PER BLOCK	0.5 fc	3.6 fc	0.0 fc
OPTION 3A : (8) POLES PER BLOCK	0.4 fc	3.1 fc	0.0 fc
OPTION 3B : (6) POLES PER BLOCK	0.3 fc	3.1 fc	0.0 fc
OPTION 4A : (8) POLES PER BLOCK	0.4 fc	1.2 fc	0.1 fc
OPTION 4B : (6) POLES PER BLOCK	0.3 fc	1.2 fc	0.0 fc
OPTION 5A : (8) POLES PER BLOCK	0.5 fc	1.4 fc	0.2 fc
OPTION 5B : (6) POLES PER BLOCK	0.4 fc	1.4 fc	0.1 fc

SIDEWALK LIGHTING - GENERAL NOTES

- A INSTALLATION SHALL CONFORM TO ALL APPLICABLE NEC, UL, STATE AND LOCAL CODES.
- B FIXTURE LAYOUT IS FOR A 355' LONG BLOCK. DESIGN SHALL BE ADJUSTED TO ACCOMMODATE FOR DIFFERENCES IN BLOCK LENGTH AND OBSTRUCTIONS.
- C IT IS RECOMMENDED THAT THE CITY PROCURE AND INSTALL A MOCKUP FIXTURE FOR REVIEW PRIOR TO ORDERING ALL FIXTURES FOR FINAL VERIFICATION OF OPTIONS AND OPTICAL CONTROLS.
- D DRAWINGS INDICATE PRELIMINARY CALCULATIONS TO COMPARE FIXTURE OPTIONS AND AID OWNER IN MAKING A FIXTURE SELECTION. ONCE A FIXTURE SELECTION IS MADE, INCLUDING FINAL PHOTOMETRIC DISTRIBUTION AND LENS OPTIONS, FINAL CALCS SHALL BE PERFORMED TO CONFIRM DESIGN.

3 VERTICAL LIGHT ON ADJACENT RESIDENCES
AL106 SCALE: 1/8" = 1'-0"

THIS DRAWING INDICATES LIGHTING EQUIPMENT LAYOUT AND DESIGN OF LIGHTING SYSTEMS. REVIEW BY A QUALIFIED ENGINEER IS NECESSARY TO ASSURE SAFETY AND CODE COMPLIANCE.

FOR REFERENCE ONLY

REFER TO E-SERIES DRAWINGS FOR ELECTRICAL FEEDS, DISCONNECT SWITCHES, CONDUIT, AND WIRE FOR ALL LIGHTING EQUIPMENT. DIVISION 26 CONTRACTOR SHALL PROVIDE AND INSTALL ALL LIGHTING EQUIPMENT AND CONTROL WIRING FOR A COMPLETE AND OPERABLE SYSTEM.

PRELIMINARY
NOT FOR CONSTRUCTION

THEATRE PLANNERS / LIGHTING DESIGNERS
Schuler Shook
219 MAIN STREET SE, SUITE 200
MINNEAPOLIS, MN 55414
T 612 339 5956 F 612 337 5097
schulershook.com

Federal copyright laws protect the intellectual property of designers by giving copyright protection to plans and designs. The use of these plans and specifications shall be restricted to the original site for which they were prepared and publication thereof is expressly limited to such use. Reproduction, publication, or reuse by any method, in whole or in part, is prohibited. Plans cannot be modified or redrawn without the copyright owner's written approval. Title to the plans and specifications remain with Schuler Shook without prejudice.

THIS DRAWING INDICATES GENERAL LIGHTING LAYOUT AND DESIGN OF LIGHTING SYSTEMS. REVIEW BY A QUALIFIED ENGINEER IS NECESSARY TO ASSURE SAFETY AND CODE COMPLIANCE.

PRELIMINARY CALCULATIONS

NEIGHBORHOOD LIGHTING HISTORIC DISTRICT

Owner:
City of La Crosse

Scale: As indicated
Layout By: MAL
Date: 03-09-2021

No.	Description	Date

SIDEWALK LIGHTING CASS & 10TH FIXTURE
10' POLES
OPTICS ROTATED
TOWARD STREET

AL106