

Project Owner

CCF BANK
LA CROSSE BRANCH BUILDING REMODEL

141 S 7TH ST. LA CROSSE, WI 54601

This drawing is an instrument of service and shall remain the property of Short Elliott Hendrickson, Inc. (SEH). The drawing, concepts and ideas contained herein shall not be used, reproduced, revised, or retained without the express written approval of SEH.

Submission or distribution of this drawing to meet official or regulatory requirements or for purposes in connection with the project is not to be construed as publication in derogation of any of the rights of SEH.

COPYRIGHT © 2022
Short Elliott Hendrickson, Inc.
All Rights Reserved

SEH Project 161151
Checked By JRL
Drawn By JRL

Project Status BID SET
Issue Date 02-01-22

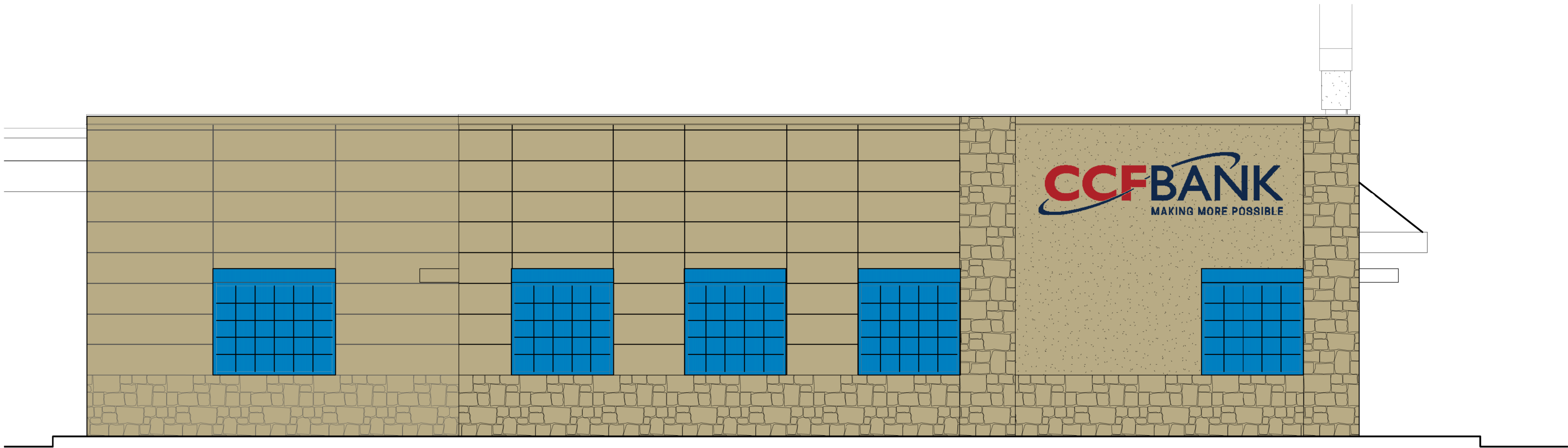
REVISION SCHEDULE		
REV. #	DESCRIPTION	DATE

CITY ELEVATION STUDY

A1



1 KING STREET ELEVATION
A1 1/4" = 1'-0"



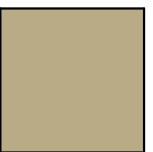
2 7TH STREET ELEVATION
A1 1/4" = 1'-0"

TOTAL AREA OF
WINDOWS AND
DOORS



299 S.F.

TOTAL AREA OF
FACADE FACING
STREET



2450 S.F.

12.2%