

Q3 Contracting
651-365-7355

CONTRACTOR NAME: Xcel Energy

CONTRACTOR JOB #: 109323347

DESIGNED BY: Sam Quaal, T.C.S.

DATE PREPARED: 4/11/23

ORDERED BY: Jason Klugow, PSC Q3 Contracting

CITY: La Crosse, WI

PROJECT NAME: -

Q3 #: 3035026

DATE REVISED: -

REVISD BY: -

STREET/LOCATION: State St & 6th St N

STAGE/PHASE#: -

○ - REFLECTIVE DRUM * - TYPE A CHANNELIZER ◼ - REFLECTIVE CONES


DISCLAIMER: This is a proposed traffic control layout. It has not been created or approved by a Professional Engineer and must be approved by the Road Authority prior to setup.

- NOTES:**
-  State St detour route.
 - Closure signing shown on pages #2-3.








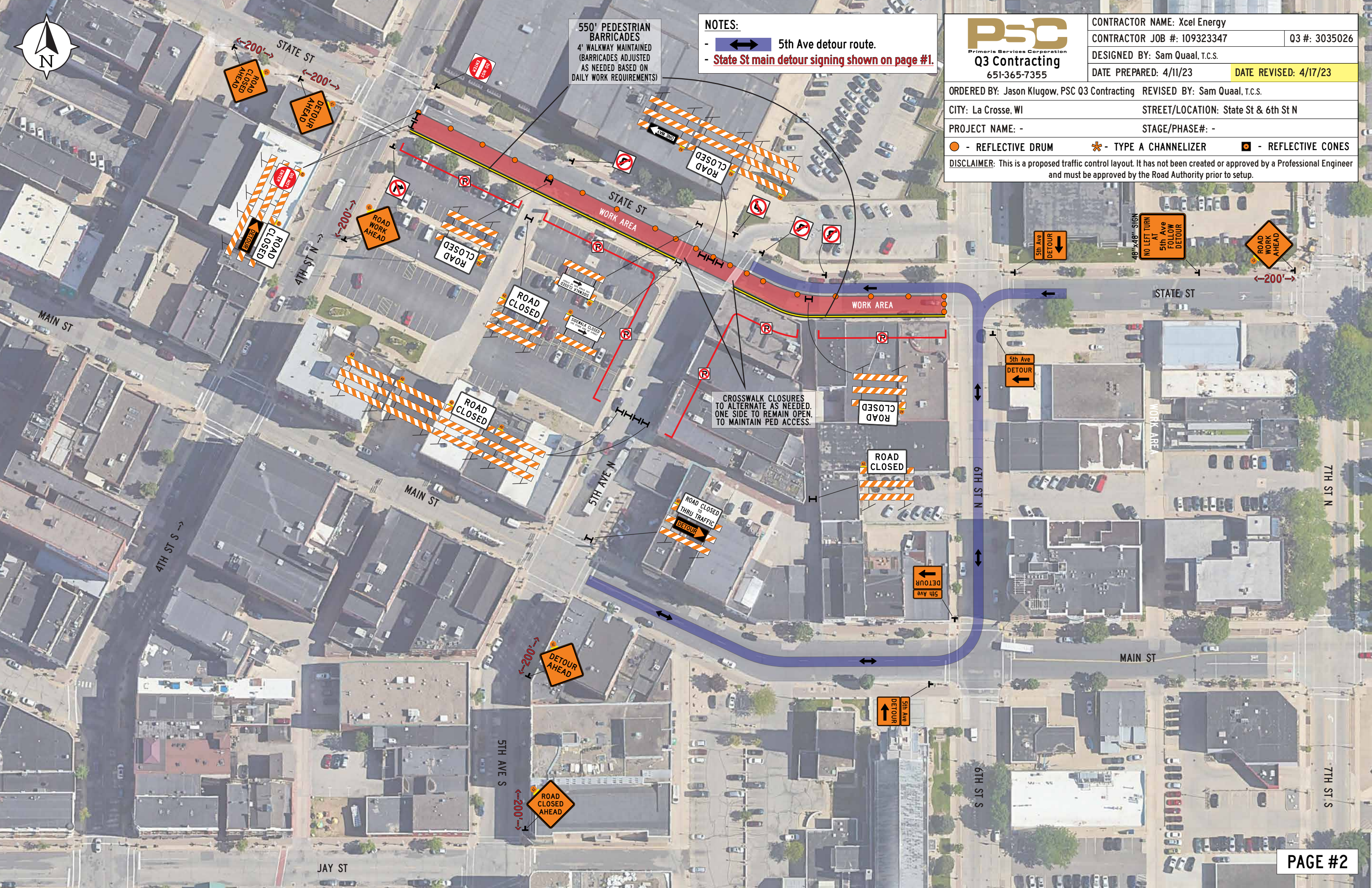
550' PEDESTRIAN BARRICADES
4' WALKWAY MAINTAINED
(BARRICADES ADJUSTED
AS NEEDED BASED ON
DAILY WORK REQUIREMENTS)

NOTES:
-  5th Ave detour route.
- State St main detour signing shown on page #1.

PSC
Primoris Services Corporation
Q3 Contracting
651-365-7355

CONTRACTOR NAME: Xcel Energy		
CONTRACTOR JOB #:	109323347	Q3 #: 3035026
DESIGNED BY: Sam Quaal, T.C.S.		
DATE PREPARED: 4/11/23	DATE REVISED: 4/17/23	

ORDERED BY: Jason Klugow, PSC Q3 Contracting		REVISED BY: Sam Quaal, T.C.S.
CITY: La Crosse, WI	STREET/LOCATION: State St & 6th St N	
PROJECT NAME: -	STAGE/PHASE#: -	
 - REFLECTIVE DRUM	 - TYPE A CHANNELIZER	 - REFLECTIVE CONES
DISCLAIMER: This is a proposed traffic control layout. It has not been created or approved by a Professional Engineer and must be approved by the Road Authority prior to setup.		





PSC
Primoris Services Corporation
Q3 Contracting
651-365-7355

CONTRACTOR NAME: Xcel Energy		
CONTRACTOR JOB #:	109323347	Q3 #: 3035026
DESIGNED BY: Sam Quaal, T.C.S.		
DATE PREPARED: 4/11/23	DATE REVISED: 4/17/23	

ORDERED BY: Jason Klugow, PSC Q3 Contracting REVISED BY: Sam Quaal, T.C.S.

CITY: La Crosse, WI STREET/LOCATION: State St & 6th St N

PROJECT NAME: - STAGE/PHASE#: -

● - REFLECTIVE DRUM ✱ - TYPE A CHANNELIZER ● - REFLECTIVE CONES

DISCLAIMER: This is a proposed traffic control layout. It has not been created or approved by a Professional Engineer and must be approved by the Road Authority prior to setup.

NOTES:

- 6th St detour route.
- State St local detour route.
- State St main detour signing shown on page #1.

