

## MEMORANDUM

August 12, 2020

To: Jack Zabrowski

Organization: City of La Crosse

From: Sonia Haeckel

Project: City of La Crosse Safe Routes to School Update

### Re: Demonstration Projects

This memorandum proposes two demonstration projects as part of the City of La Crosse Safe Routes to School Update. The purpose of the projects is to demonstrate to La Crosse residents, visitors, and others how specific recommendations of the Safe Routes to School Update may be implemented.

### Duration

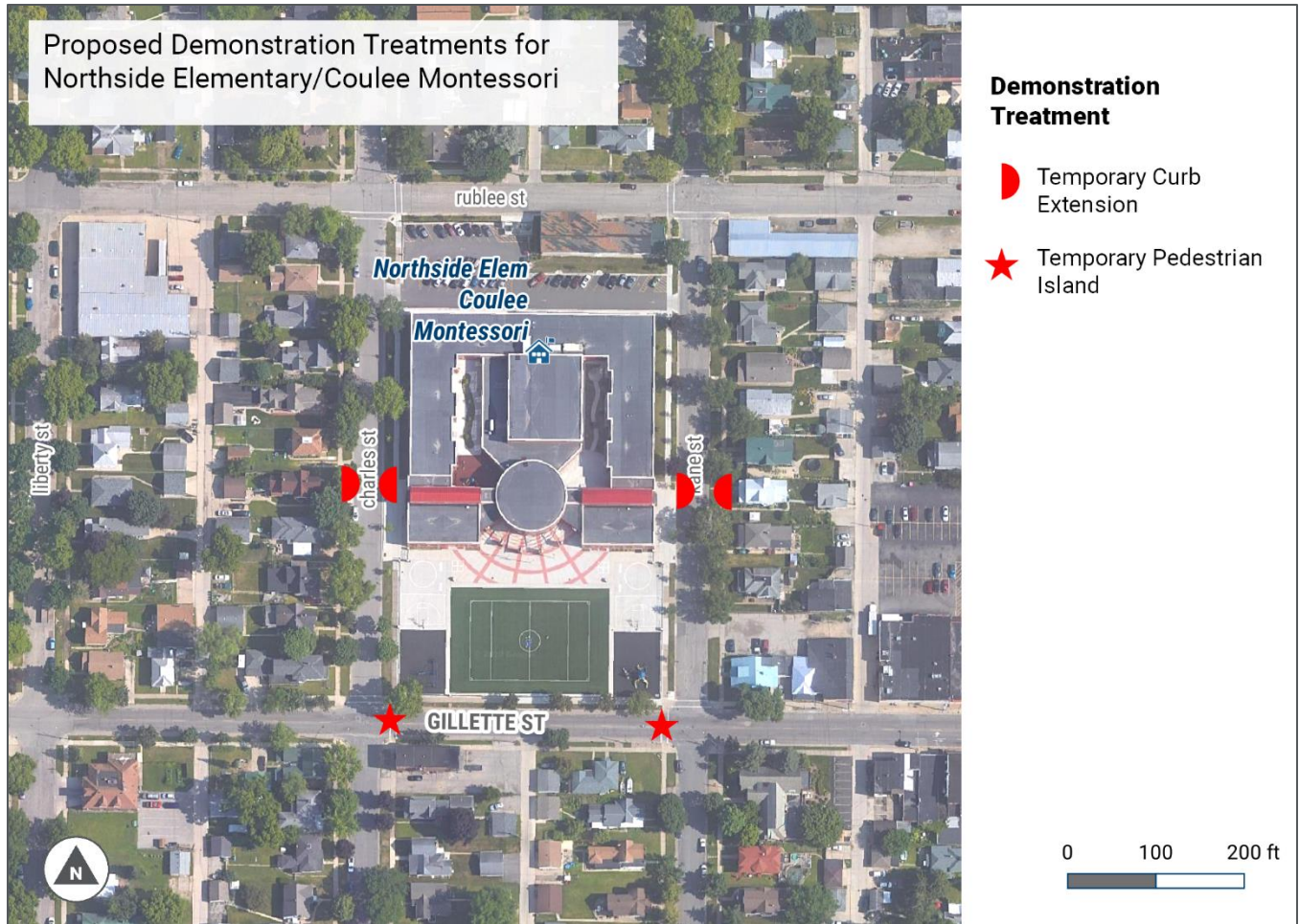
The demonstration projects were originally conceived as one to two day long events to highlight potential infrastructure changes near schools. City and/or consultant staff would have been present at each demonstration to talk to people about what the project was and gauge their interest and/or support for the project. However, the COVID-19 pandemic has made face-to-face interactions with people more challenging, and normal travel patterns, particularly around schools, have changed. Given these challenges, the demonstration projects are now proposed to last two weeks. Temporary signs will be installed with each project describing the purpose of the project and how people can provide feedback about the project.

### Projects

The following are proposed as demonstration projects to highlight recommendations of the City of La Crosse Safe Routes to School Update.

#### *Northside Elementary/Coulee Montessori*

This demonstration project will provide temporary curb extensions and pedestrian islands at Northside Elementary School/Coulee Montessori (see map and table next page). Curb extensions/neckdowns will be placed on Charles Street and Kane Street on the crosswalks outside both main entrances. Pedestrian islands will be placed in Gillette Street at the intersections of Kane Street and Charles Street. Toole Design staff will lead installation of the temporary project with support from City staff. City staff will be responsible for maintaining and removing the temporary project. The materials used are described in the table following the map.



Location	Demonstration Treatment	Barrier Material (Who Will Provide)	Other Materials
Charles Street and Kane Street, on the crosswalks outside the main entrance	Curb extensions	<ul style="list-style-type: none"> <li>Straw waddles (Toole Design)</li> <li>Candlestick cones (City of La Crosse)</li> </ul>	<ul style="list-style-type: none"> <li>Edgeline: spray chalk</li> <li>Surface (Optional): Tempura paint in different colors, design to be filled in by volunteers</li> </ul>
Gillette Street at Kane Street and Charles Street	Pedestrian Islands	<ul style="list-style-type: none"> <li>Candlestick cones (City of La Crosse)</li> </ul>	<ul style="list-style-type: none"> <li>Edgeline: spray chalk</li> </ul>



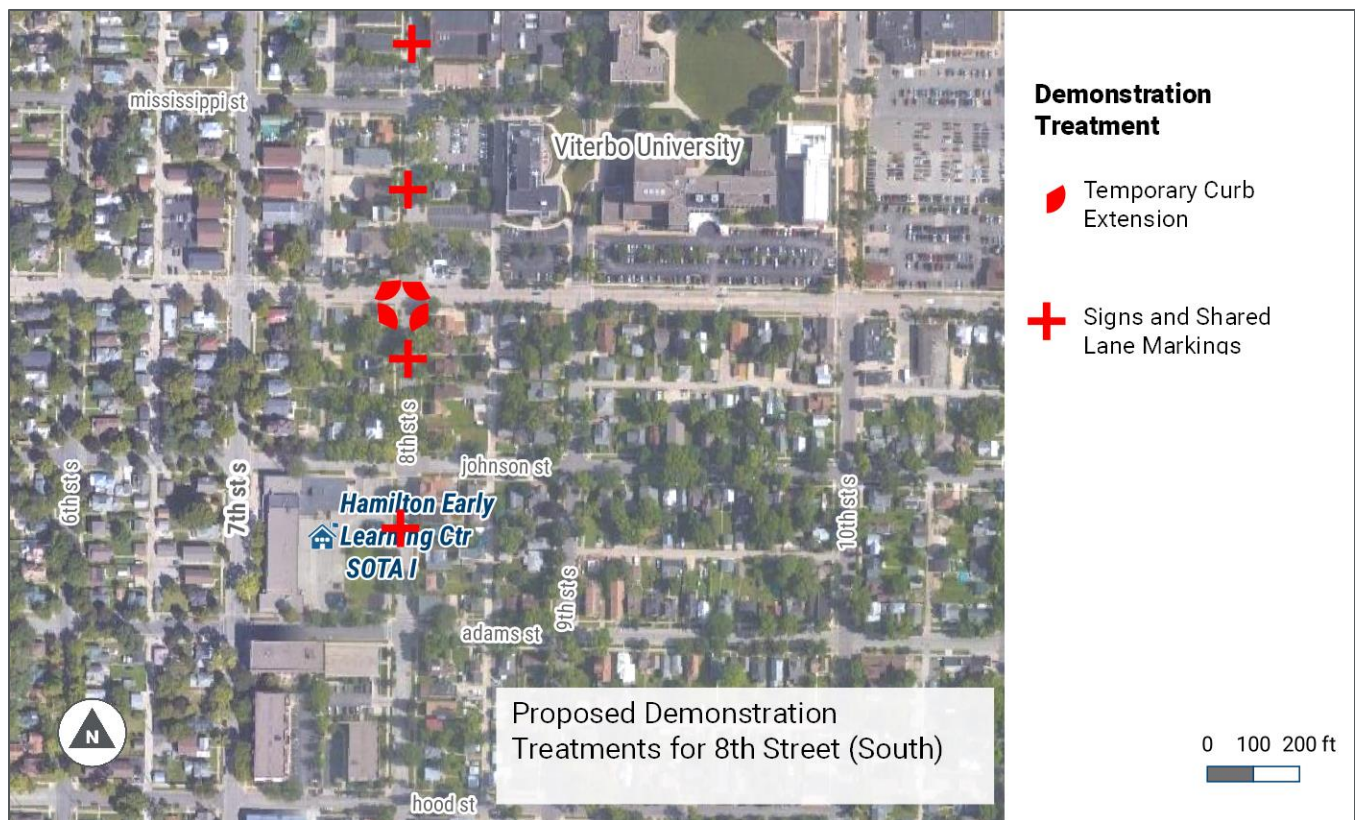
### 8<sup>th</sup> Street Neighborhood Greenway

This demonstration project will provide a neighborhood greenway along 8<sup>th</sup> Street South between Cass Street and Adams Street (see map and table). The neighborhood greenway will include the following features:

- Temporary shared lane markings (1 per block each direction)
- Temporary Neighborhood Greenway signs (1 per block each direction)
- Up to three traffic calming treatments “constructed” using temporary materials. We propose implementing these at the intersections of Ferry Street, Market Street, and Jackson Street.

Toole Design staff will lead installation of the temporary project with support from City staff. City staff will be responsible for maintaining and removing the temporary project. The materials used are described in the table following the map.





Location	Demonstration Treatment	Barrier Material (Who Will Provide)	Other Materials
Each block	Shared Lane Markings	Not applicable	<ul style="list-style-type: none"> <li>Temporary paint</li> <li>Sharrow stencil (City of La Crosse)</li> </ul>
Each block	Signs	Not applicable	Corrugated plastic signs (Toole Design)
8 <sup>th</sup> Street and Ferry Street	Curb extensions	<ul style="list-style-type: none"> <li>Straw waddles (Toole Design)</li> <li>Candlestick cones (City of La Crosse)</li> </ul>	<ul style="list-style-type: none"> <li>Edgeline: temporary paint</li> <li>Surface (Optional): Tempura paint in different colors, design to be filled in by volunteers</li> </ul>
8 <sup>th</sup> Street and Market Street	Pedestrian Island	<ul style="list-style-type: none"> <li>Candlestick cones (City of La Crosse)</li> </ul>	<ul style="list-style-type: none"> <li>Edgeline: temporary paint</li> </ul>
8 <sup>th</sup> Street and Jackson Street	Curb extensions	<ul style="list-style-type: none"> <li>Straw waddles (Toole Design)</li> <li>Cones (City of La Crosse)</li> </ul>	<ul style="list-style-type: none"> <li>Edgeline: spray chalk</li> <li>Surface (Optional): Tempura paint in different colors, design to be filled in by volunteers</li> </ul>



### Materials Drop Off/Delivery

Two weeks prior to the demonstration project installation, Toole Design will provide quantities needed for cones (and other potential barriers) that the City of La Crosse is to provide, as well as the intersections that the cones will be dropped off at. An example list (not final quantities) is below:

Intersection	Materials (Quantity)
8 <sup>th</sup> Street and Ferry Street	Candlestick cones (12)
8 <sup>th</sup> Street and Market Street	Candlestick cones (16)
8 <sup>th</sup> Street and Jackson Street	Candlestick cones (12)

### Timing

The demonstration projects will be in place for two weeks as early as September 7. As of July 28, 2020, La Crosse schools are planning on operating virtually for at least the month of September. Even though schools will be closed in September, residents will be able to experience the demonstration projects during regular walking and bicycling trips around their neighborhoods with nice end-of-summer temperatures.

### Maintenance

City Planning staff will check on the demonstration projects regularly to make sure that nothing has been knocked over or pushed aside. City Planning staff will also take down the materials at the end of the two week period.

Sincerely,

**Sonia Haeckel** | Project Planner II

### TOOLE DESIGN

122 W. Washington Avenue, Suite 550 | Madison, WI 53703  
[shaeckel@tooledesign.com](mailto:shaeckel@tooledesign.com) | 608.663.8082 x406