



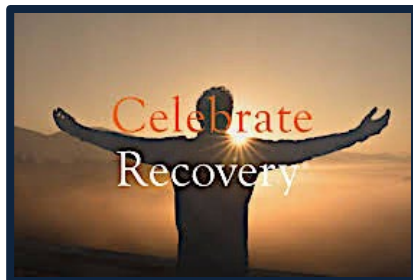
*Madison
La Crosse*

Overview

*180
Employees*

Tellurian has been providing a continuum of innovative treatment services in an environment where ***“Recovery Begins Here”*** to those struggling with Behavioral Health Disorders, since 1971.

Operating as a 501-(c)-3 human services agency based in Madison, Tellurian provides a wide array of services through more than 20 programs.



*Providing Support & Services
to 9,000+ Individuals per year*

Recovery Begins Here

At Tellurian, we specialize in treating people who struggle with Behavioral Health disorders. We are unique in that our patients receive both psychological and medical treatment by our certified team.

Because every person's journey is unique, we meet each of our patients where they are at. This means that our treatment plans are not 'one size fits all' but are tailored to each individual person; so, they are able to achieve greater success.

“Recovery is being able to heal from whatever illness and/or pain you experience, at some point throughout life.”

Tellurian Programs

Tellurian provides a safe, secure, highly structured treatment for patients in need of our services in our fully licensed facilities located in Madison, Monona and La Crosse for those experiencing Behavioral Health Disorders. We offer a wide variety of services some of which include case management, sober living, residential treatment, detoxification, outpatient treatment.

“Treating the whole person to foster a fresh start.”

La Crosse CARE Center

4647 Mormon Coulee Rd. La Crosse, WI 54601



The CARE Center provides crisis stabilization services for adults, diverting patients from costly and restrictive institutional settings while providing a safe, comfortable, and home-like environment. The center holds 10 beds, and the typical length of stay is 3-5 days or less.

Community Intervention Team

La Crosse, WI

Goal: Promote recovery and enhance the individual's quality of life by improving their skills, competencies, societal integration, independence, and life satisfaction.



Services include:

Crisis stabilization

Medical care coordination

Psychiatric care

Symptom management

Medication management

Money management

Housing coordination

ADL skills training.

Proposed Behavioral Health Facility

1720 Jackson Street



Tellurian Behavioral Health

Facility Overview

- Primary objective: Tellurian will provide Behavioral Health services, including assessment, stabilization, counseling; in a safe, comfortable, and home-like environment.
- Admission Process: The facility will accept voluntary adult admissions who've been pre-screened by mobile teams and/or law enforcement, with no medical clearance required.
- Referrals: If referrals to other levels of care are determined, Tellurian will facilitate, and not shift responsibility back to initial referral source (freeing up law enforcement time). Referrals may include various community resources, including case management, county ADRC, psychiatric or psychological counseling.
- **No Walk-In or Drop -In admissions will be allowed**

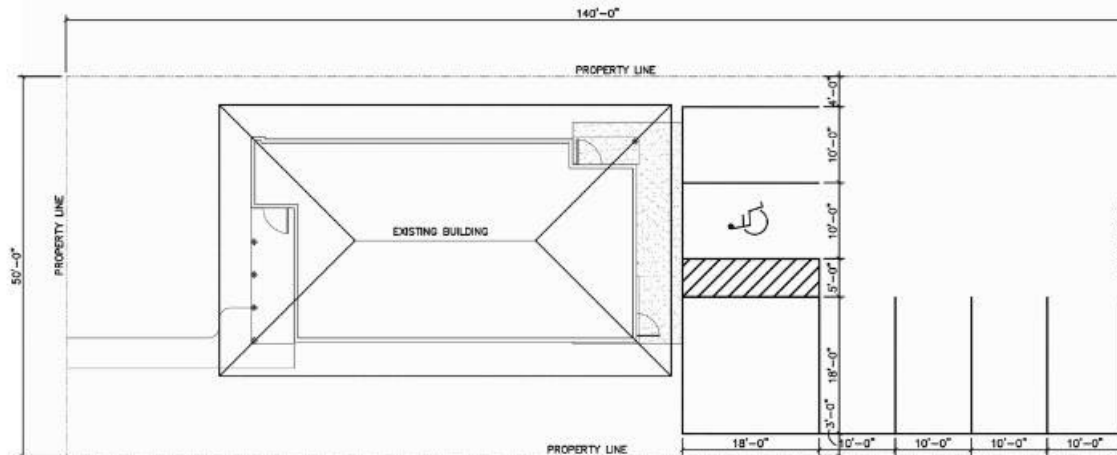
Facility Design Summary

- Accept all voluntary adult referrals.
- Not require medical clearance prior to admission but rather assessment and support for medical stability while in the program.
 - Design services to address Behavioral Health.
 - Offer first responder drop-off options.
- Be structured in a manner that offers capacity to accept all voluntary adult referrals, understanding that facility capacity limitations may result in occasional exceptions when full.
- Screen for suicide risk and complete comprehensive suicide risk assessments and planning when clinically indicated; and screen for violence risk and complete more comprehensive violence risk assessments and planning when clinically indicated.



SITE POSITIVES

- OFF-SITE PARKING
- MORE GREEN SPACE
- REDUCTION IN PAVING
- ADDITIONAL LANDSCAPING
- MONUMENT SIGN REMOVAL
- NEW BUILDING SIGNAGE
- WAYFARE SIGNAGE
- PAVING TOPPING
- STORM WATER RETENTION
- FENCING
- ELIMINATION OF CURB-CUT TO JACKSON STREET



2 PROPOSED SITE PLAN
1" = 10'-0"



Tellurian

BEHAVIORAL HEALTH



1 SITE PLAN
11-20-20





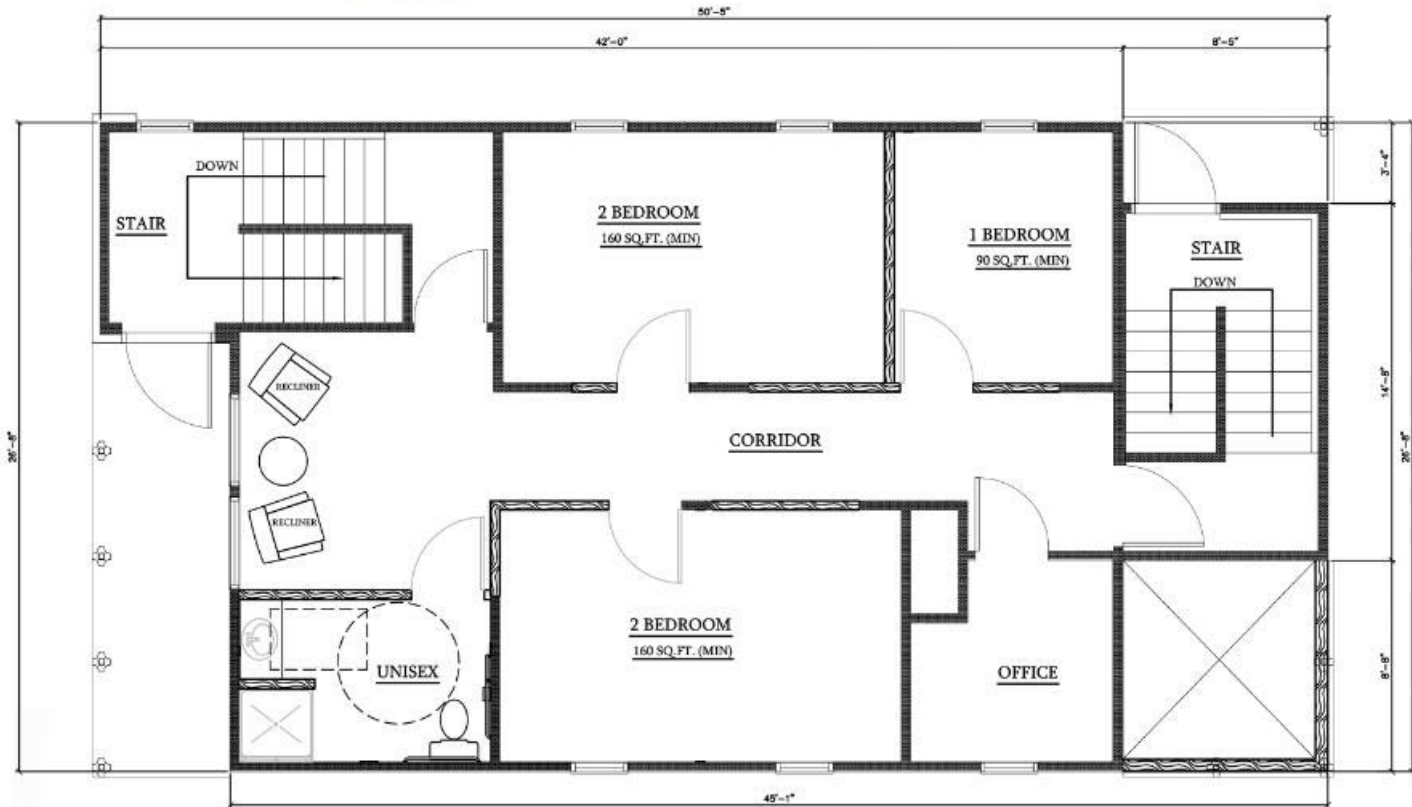






2 LOWER LEVEL DESIGN PLAN
1/4" = 1'-0"





1 MAIN LEVEL DESIGN PLAN
1/4" = 1'-0"





Thank you!
Any Questions?

