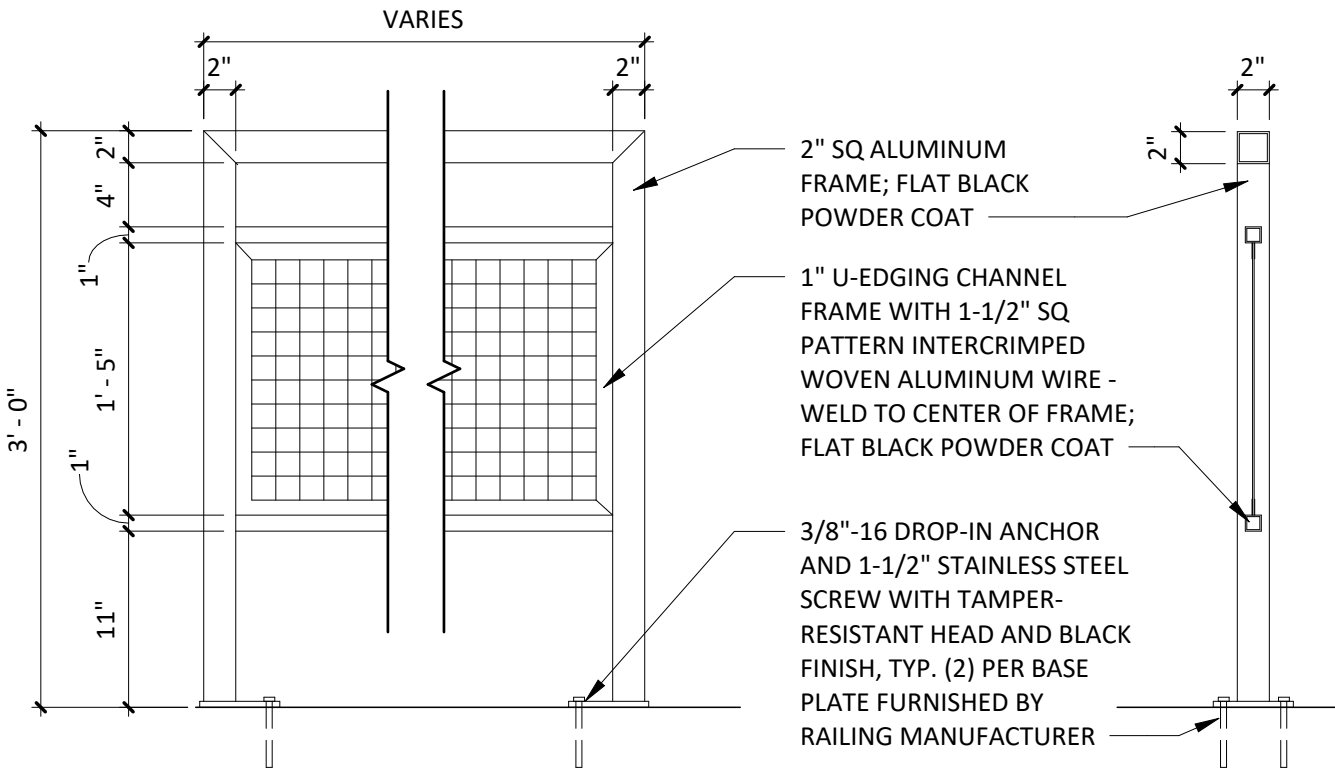
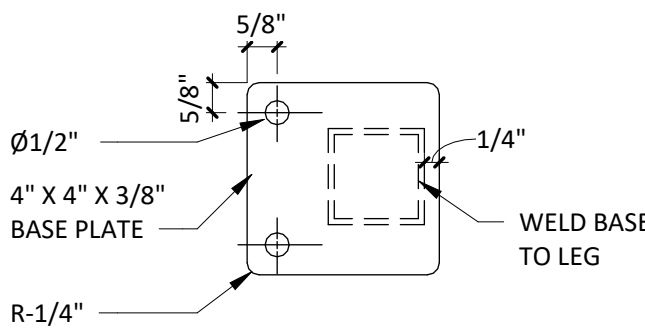


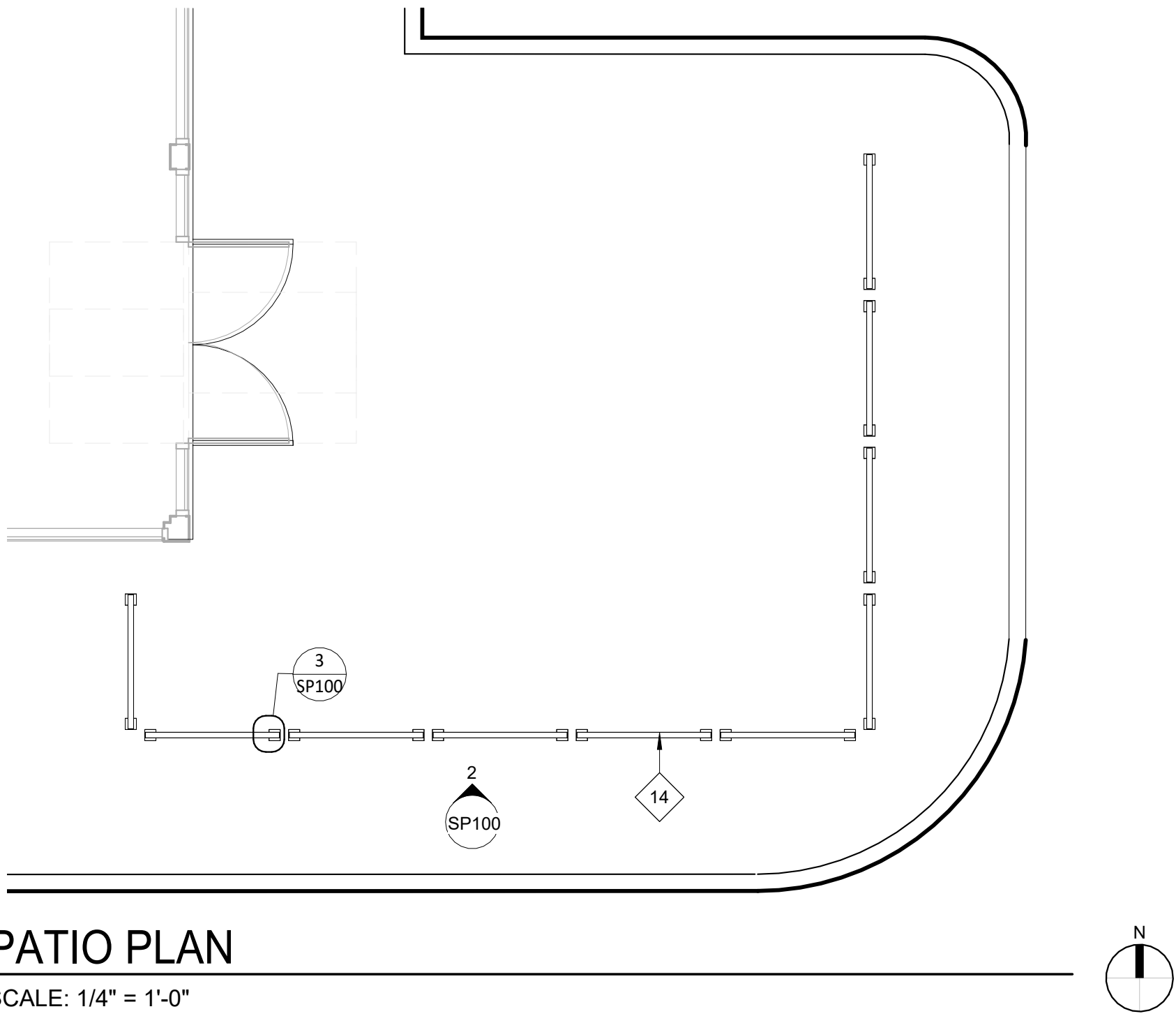
1 ARCHITECTURAL SITE PLAN  
SCALE: 1/16" = 1'-0"



2 RAILING MOUNTING DETAIL  
SCALE: 1" = 1'-0"



3 RAILING BASE PLATE DETAIL  
SCALE: 3" = 1'-0"



4 PATIO PLAN  
SCALE: 1/4" = 1'-0"

## SITE PLAN GENERAL NOTES

- CONTRACTOR SHALL PROTECT ADJACENT LANDS AND STRUCTURES FROM DAMAGE DURING CONSTRUCTION. ANY OFF-SITE AREAS DISTURBED SHALL BE RETURNED TO A CONDITION EQUAL TO OR BETTER THAN THE EXISTING CONDITION.
- NECESSARY PERMITS FOR SITE WORK AND CONSTRUCTION SHALL BE OBTAINED BY THE GENERAL CONTRACTOR PRIOR TO BEGINNING OF WORK.
- NECESSARY BARRICADES, SUFFICIENT LIGHTING, SIGNS AND OTHER TRAFFIC CONTROL METHODS MAY BE NECESSARY FOR THE PROTECTION AND SAFETY OF THE PUBLIC SHALL BE PROVIDED AND MAINTAINED THROUGHOUT THE LIFE OF THE CONSTRUCTION.
- COORDINATE WITH THE LOCAL AUTHORITY HAVING JURISDICTION PRIOR TO ANY CONSTRUCTION IN THE PUBLIC RIGHT OF WAY.
- NO DEMOLITION MATERIALS SHALL BE DISPOSED ON ON-SITE. ALL DEBRIS SHALL BE HAULED OFF-SITE TO A RECYCLING AREA APPROVED BY THE LOCAL AUTHORITY HAVING JURISDICTION FOR THE HANDLING OF DEMOLITION DEBRIS.
- GENERAL CONTRACTOR IS RESPONSIBLE TO COORDINATE THE LOCATION OF THE EXTERIOR GREASE INTERCEPTOR AND FIELD VERIFY EXISTING SITE CONDITIONS THAT COULD IMPACT THE LOCATION DURING THE BIDDING PHASE OF THE PROJECT AND ASSIGN THE APPLICABLE COSTS. THE LOCATION SHALL NOT INTERFERE WITH ANY EXISTING SETBACKS, EASEMENTS, UNDERGROUND UTILITIES OR OTHER SIDE FEATURE.
- STENCILS FOR PARKING MARKINGS AVAILABLE FROM PAVEMENT STENCIL COMPANY, PHONE: (800) 250-5547, EMAIL: STENCILS@PAVEMENTSTENCIL.COM.
- NOTE: ARCHITECTURAL SITE PLAN IS FOR REFERENCE ONLY. GC TO BUILD FROM CIVIL DRAWINGS. IF THERE IS A DISCREPANCY BETWEEN ARCHITECTURE AND CIVIL, CONTACT ARCHITECT IMMEDIATELY.
- REFER TO CIVIL AND LANDSCAPING DRAWINGS FOR ADDITIONAL INFORMATION.
- VERIFY ALL PAVED SURFACES ADJACENT TO BUILDING SLOPE AWAY FROM THE BUILDING TO PROVIDE POSITIVE DRAINAGE.
- GENERAL CONTRACTOR SHALL COORDINATE UTILITIES, ALL NEW LOCATIONS AND RELOCATIONS WITH THE LOCAL UTILITY COMPANIES.
- EXTERIOR LANDINGS TO BE FLUSH WITH INTERIOR FINISHED FLOOR AND SLOPE AWAY FROM THE FACE OF THE BUILDING AS REQUIRED BY CODE TO PROVIDE POSITIVE DRAINAGE.

## KEYNOTE LEGEND

- |    |   |
|----|---|
| 1  | PROVIDE ONE (1) 1" CONDUIT FOR FUTURE LOOP DETECTOR - CENTER ON PICK-UP WINDOW.   |
| 2  | DUMPSTER ENCLOSURE, PAD, APRON AND BOLLARDS.  |
| 3  | PROVIDE ONE (1) 1" CONDUIT FOR FUTURE DIRECTIONAL SIGNAGE.  |
| 4  | 1,500 GALLON GREASE INTERCEPTOR - REFER TO CIVIL FOR ADDITIONAL INFORMATION.  |
| 5  | GENERAL DIRECTIONAL PAVEMENT MARKINGS.  |
| 6  | PROVIDE ONE (1) 1" CONDUIT FOR FUTURE CLEARANCE BAR.  |
| 7  | 12'W x 44'L HIGH DENSITY CONCRETE LOCATION; EXTEND TO 12 LINEAR FEET BEYOND THE CENTERLINE OF PICK-UP WINDOW. - REFER TO CIVIL ADDITIONAL REQUIREMENTS AND EXTENTS. |
| 8  | 6" BOLLARD - REFER TO CIVIL FOR ADDITIONAL INFORMATION - PAINT PPG 'BLACK MAGIC'.   |
| 9  | DASHED LINE INDICATES EXTENTS OF PROPERTY LINE.   |
| 10 | SEE CIVIL DRAWINGS FOR ANY IRRIGATION AND LANDSCAPING REQUIREMENTS.   |
| 11 | 'DO NOT ENTER' STRIPING AND BAR LOCATION.   |
| 12 | 'DIGITAL PICKUP AHEAD' STRIPING   |
| 13 | ACCESSIBLE PARKING LOT STRIPING, CROSSWALK, SIGN POSTS AND SIGNS - REFER TO CIVIL FOR ADDITIONAL INFORMATION.   |
| 14 | PATIO RAILING.  |

CONSULTANT



CLIENT



ALLIANCE DEVELOPMENT  
230 OHIO ST, SUITE 200  
OSHKOSH, WI 54902  
FRED JACQUES  
(612) 941-8660

PROJECT INFORMATION

**SOUTH LACROSSE  
SHELL BUILDING**  
MORMON COULEE RD & LOSEY BLVD S.  
LACROSSE, WI 54601

SEAL

**NOT FOR  
CONSTRUCTION**

PROJECT NO. 2025-0394  
DRAWN BY SAS  
CHECKED BY KAM

ISSUE DATE  
ENTITLEMENTS 09-04-2025

REVISION DATE

TITLE:

ARCHITECTURAL  
SITE PLAN

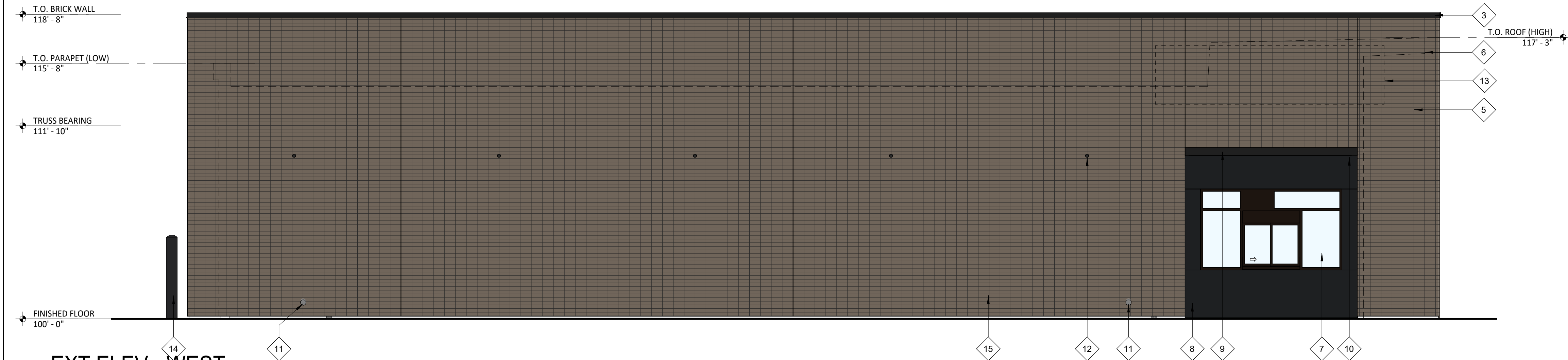
SHEET NUMBER:

**SP100**

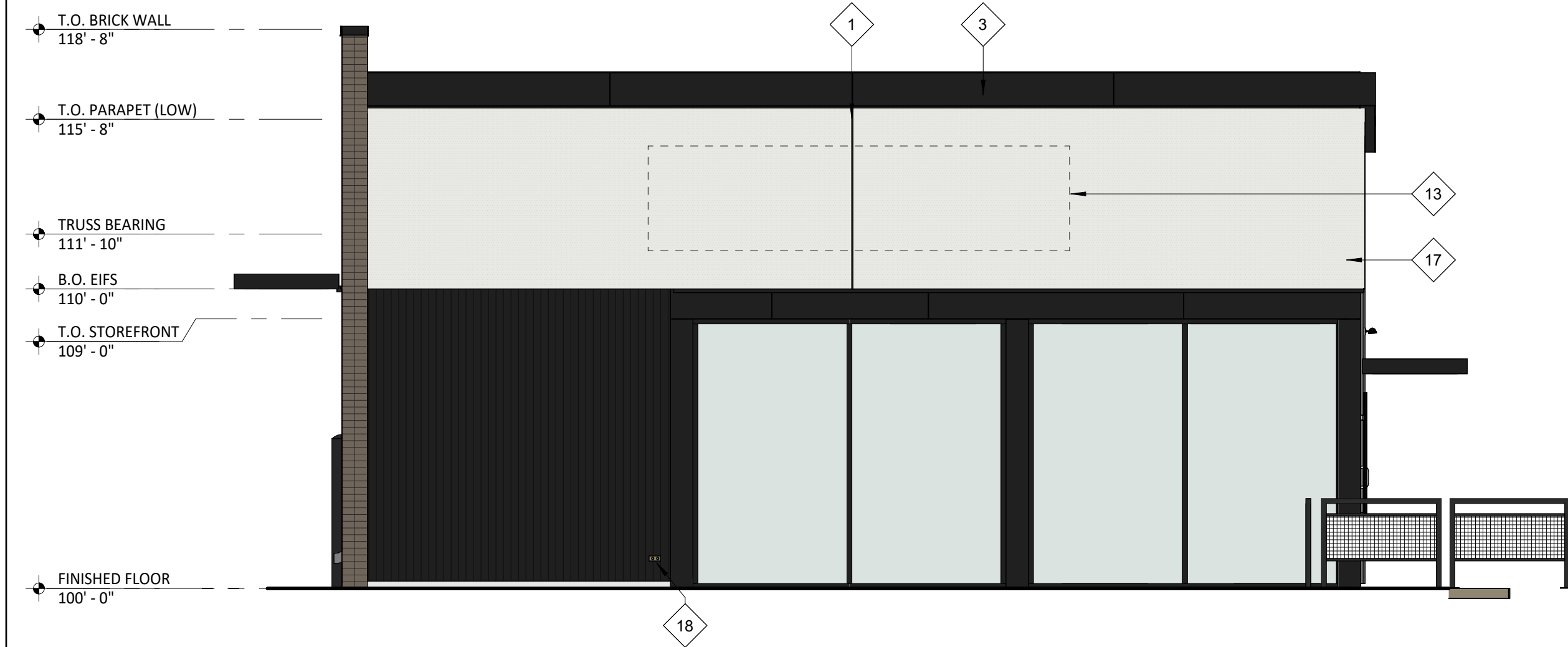




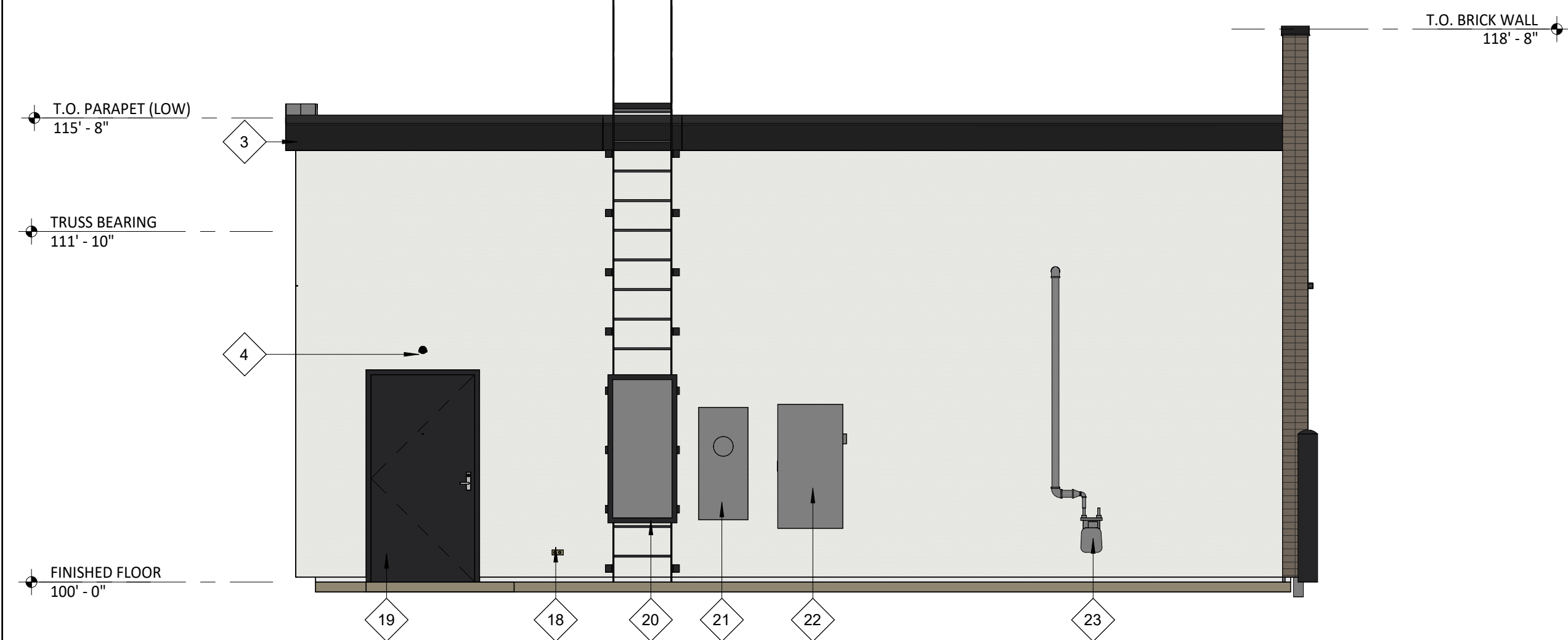
**1** EXT ELEV - EAST  
SCALE: 1/4" = 1'-0"



**2** EXT ELEV - WEST  
SCALE: 1/4" = 1'-0"



**3** EXT ELEV - SOUTH  
SCALE: 1/4" = 1'-0"



**4** EXT ELEV - NORTH  
SCALE: 1/4" = 1'-0"

## EXT ELEV GENERAL NOTES

1. PAINT ANY ALLOWABLE UTILITY BOXES AND LINES 'PEGASUS'
2. EXTERIOR SIGNAGE PROVIDED BY TSV AND INSTALLED BY TSV. GC TO MAKE FINAL CONNECTION.
3. EXTERIOR SIGNAGE LOCATIONS, SIZES, AND DESCRIPTIONS SHOWN FOR REFERENCE ONLY. PERMIT AND INSTALL BY OTHERS.
4. PROVIDE BLOCKING, SUPPORTS, AND UTILITIES FOR EXTERIOR SIGNAGE AS REQUIRED.
5. METAL CANOPY IS AVAILABLE FROM AMERICAN PRODUCTS, INC. (API), PHONE: (813)-925-0144, EMAIL: BIDS@AMERICANPROD.COM

## KEYNOTE LEGEND

- |    |  |
|----|--|
| 1  | EIFS CONTROL JOINT - REFER TO MANUFACTURER'S RECOMMENDATION FOR SPACING REQUIREMENTS.  |
| 2  | THERMALLY BROKEN BLACK ALUMINUM STOREFRONT SYSTEM WITH 1" INSULATED GLAZING - CAULK AROUND ENTIRE PERIMETER OF OPENINGS.   |
| 3  | PREFINISHED BLACK METAL COPING.  |
| 4  | EXTERIOR EMERGENCY LIGHT - SEE ELECTRICAL FOR FURTHER INFORMATION.   |
| 5  | THIN BRICK VENEER - STACKED BOND - REFER TO SPECIFICATIONS FOR ADDITIONAL INFORMATION.   |
| 6  | DASHED LINE INDICATES BUILDING OUTLINE BEYOND.   |
| 7  | PREFINISHED DARK BRONZE ALUMINUM PASS-THRU WINDOW WITH INTEGRATED INTERIOR AIR CURTAIN, TRANSOM AND SIDELITES - CAULK AROUND ENTIRE PERIMETER OF OPENING.                    |
| 8  | PREFINISHED BLACK FLUSH METAL PANELS - SEE SPECIFICATIONS FOR FURTHER INFORMATION.   |
| 9  | PREFINISHED METAL CANOPY W/ INTEGRAL LED LIGHTING CHANNEL - COLOR TO MATCH STOREFRONT - SEE SPECIFICATIONS FOR FURTHER INFORMATION.  |
| 10 | LED CHANNEL LIGHT - LENGTH TO MATCH CANOPY - SEE ELECTRICAL FOR FURTHER INFORMATION.   |
| 11 | STAINLESS STEEL COW TONGUE OVERFLOW ROOF DRAIN DISCHARGE - SEE PLUMBING FOR FURTHER INFORMATION.   |
| 12 | WALL PACK LIGHT - SEE ELECTRICAL FOR FURTHER INFORMATION.  |
| 13 | DASHED AREA INDICATES EXTENTS OF BLOCKING FOR FUTURE TENANT SIGNAGE - PROVIDE ELECTRICAL ACCESS AS REQUIRED - COORDINATE ADDITIONAL REQUIREMENTS WITH TENANT SIGNAGE VENDOR. |
| 14 | 8" CONCRETE SAFETY BOLLARD.  |
| 15 | MASONRY CONTROL JOINTS - REFER TO MANUFACTURER'S RECOMMENDATIONS FOR SPACING REQUIREMENTS  |
| 16 | BRAKE METAL SEAM LOCATION - MAINTAIN ALIGNMENT WITH ADJACENT FINISHES.   |
| 17 | EIFS - COLOR TO MATCH PPG 'PEGASUS' - REFER TO SPECIFICATIONS FOR ADDITIONAL INFORMATION.  |
| 18 | FROST PROOF WALL HYDRANT - SEE PLUMBING FOR FURTHER INFORMATION.   |
| 19 | INSULATED HOLLOW METAL DOOR AND FRAME - CAULK AROUND ENTIRE PERIMETER OF OPENING - PAINT DOOR AND FRAME BLACK.   |
| 20 | EXTERIOR ROOF LADDER WITH LOCKING GATE - PAINT BLACK.  |
| 21 | ELECTRICAL METER - SEE ELECTRICAL FOR FURTHER INFORMATION.   |
| 22 | ELECTRICAL FUSED DISCONNECT SWITCH - SEE ELECTRICAL FOR FURTHER INFORMATION.   |
| 23 | GAS METER - SEE PLUMBING FOR FURTHER INFORMATION.  |

CONSULTANT



CLIENT



ALLIANCE DEVELOPMENT  
230 OHIO ST, SUITE 200  
OSHKOSH, WI 54902  
FRED JACQUES  
(612) 941-8660

PROJECT INFORMATION

**SOUTH LACROSSE  
SHELL BUILDING**  
MORMON COULEE RD & LOSEY BLVD S.  
LACROSSE, WI 54601

SEAL

**NOT FOR  
CONSTRUCTION**

PROJECT NO. 2025-0394

DRAWN BY SAS

CHECKED BY KAM

ISSUE DATE

ENTITLEMENTS 09-04-2025

REVISION DATE

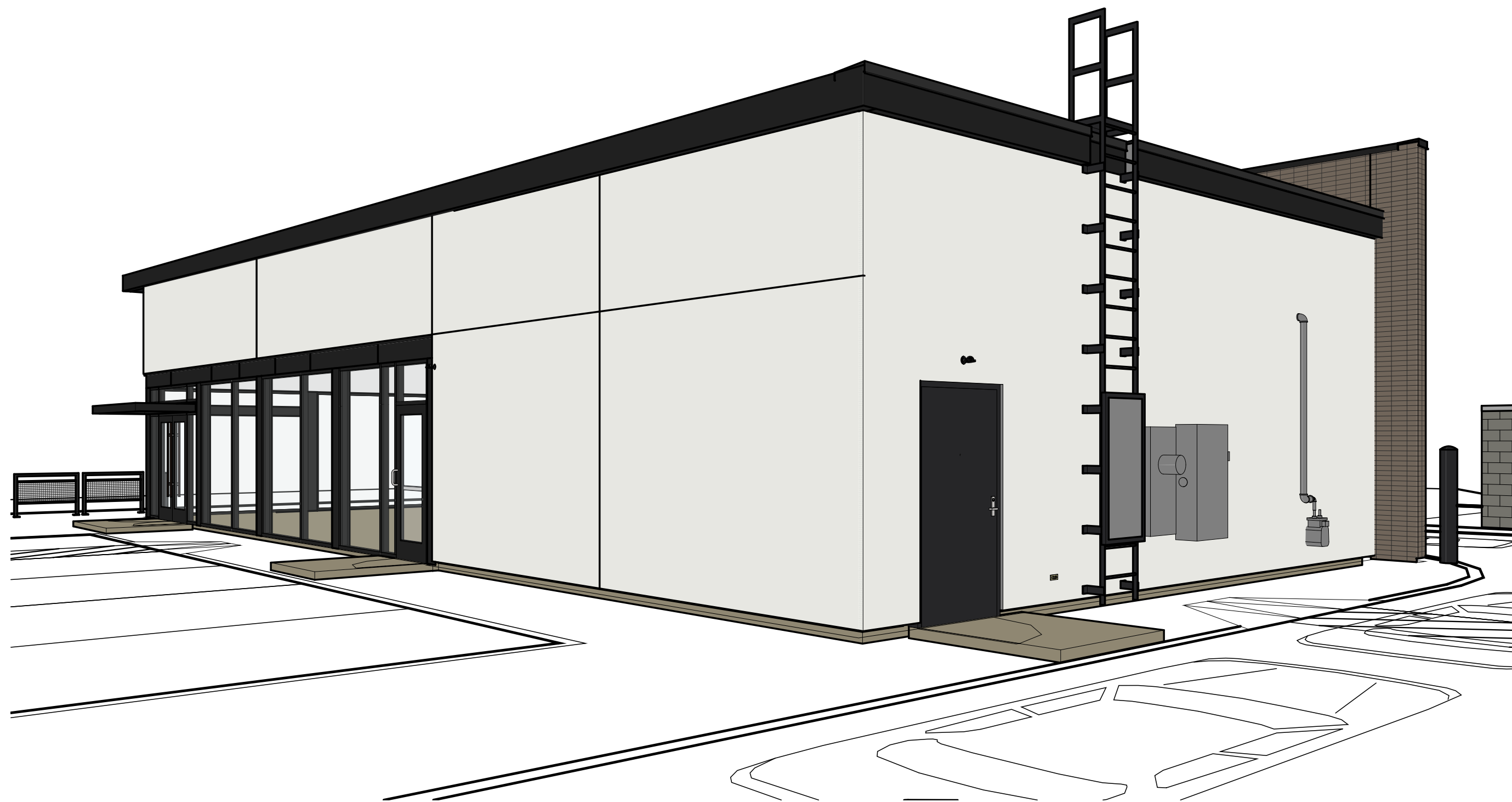
TITLE:

**EXTERIOR  
ELEVATIONS**

SHEET NUMBER:

**A301**

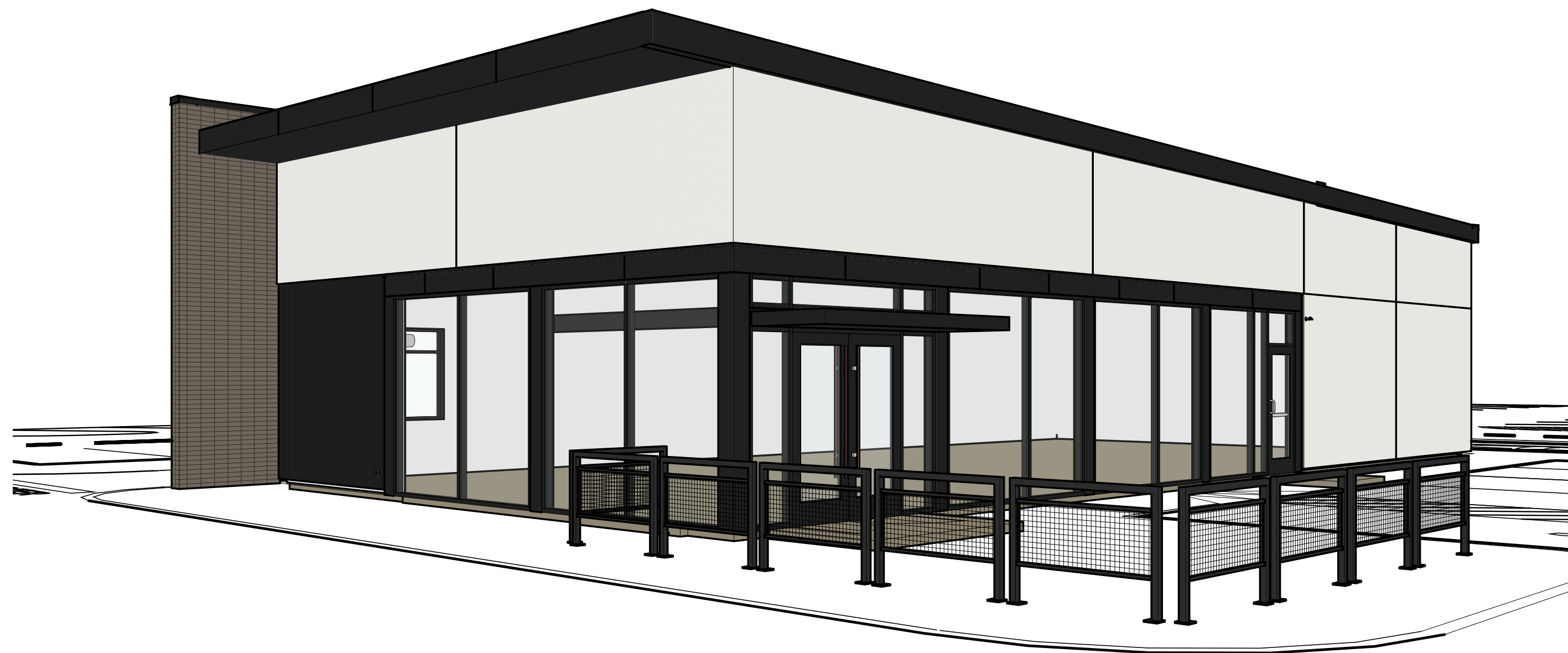




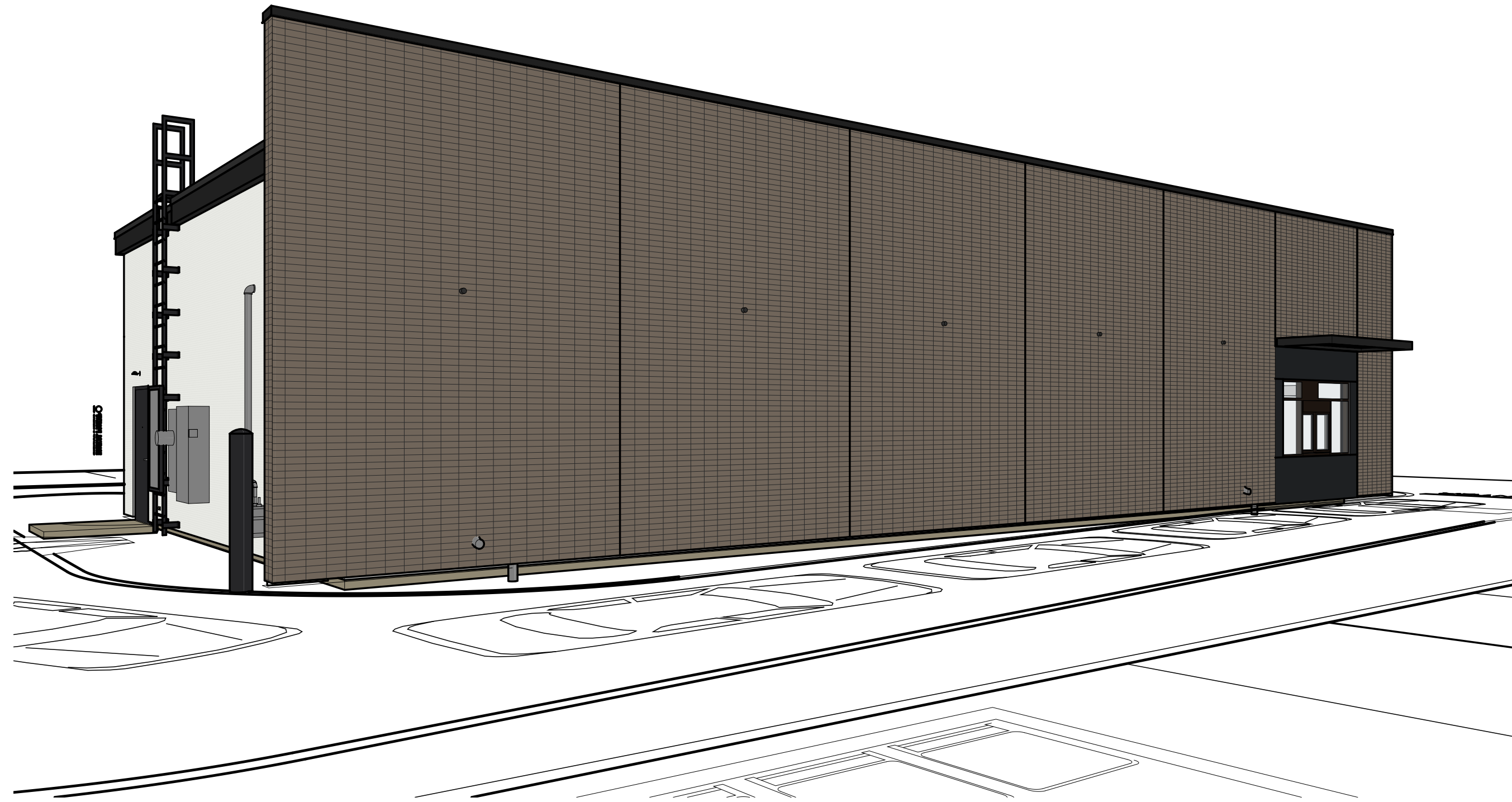
2 EXTERIOR PERSPECTIVE  
SCALE:



4 EXTERIOR PERSPECTIVE  
SCALE:



1 EXTERIOR PERSPECTIVE  
SCALE:



3 EXTERIOR PERSPECTIVE  
SCALE:

CONSULTANT



CLIENT



ALLIANCE DEVELOPMENT  
230 OHIO ST, SUITE 200  
OSHKOSH, WI 54902  
FRED JACQUES  
(612) 941-8660

PROJECT INFORMATION

**SOUTH LACROSSE  
SHELL BUILDING**  
MORMON COULEE RD & LOSEY BLVD S.  
LACROSSE, WI 54601

SEAL

NOT FOR  
CONSTRUCTION

PROJECT NO. 2025-0394  
DRAWN BY SAS  
CHECKED BY KAM

ISSUE DATE  
ENTITLEMENTS 09-04-2025

REVISION DATE

TITLE:  
EXTERIOR  
PERSPECTIVES

SHEET NUMBER:  
**A901**