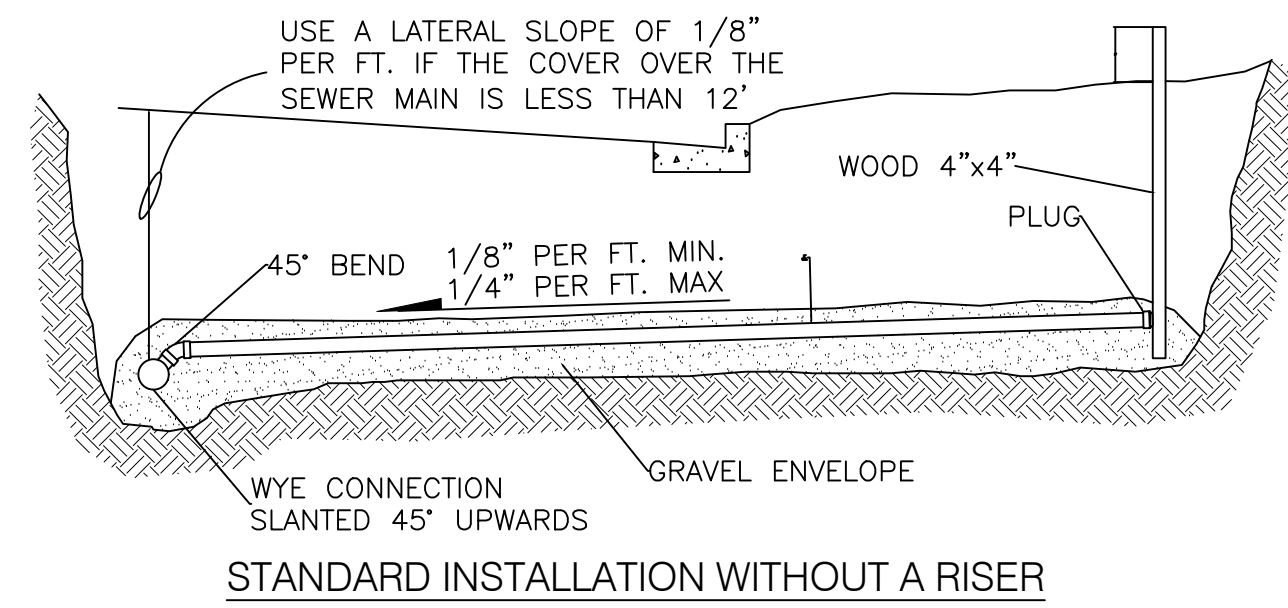
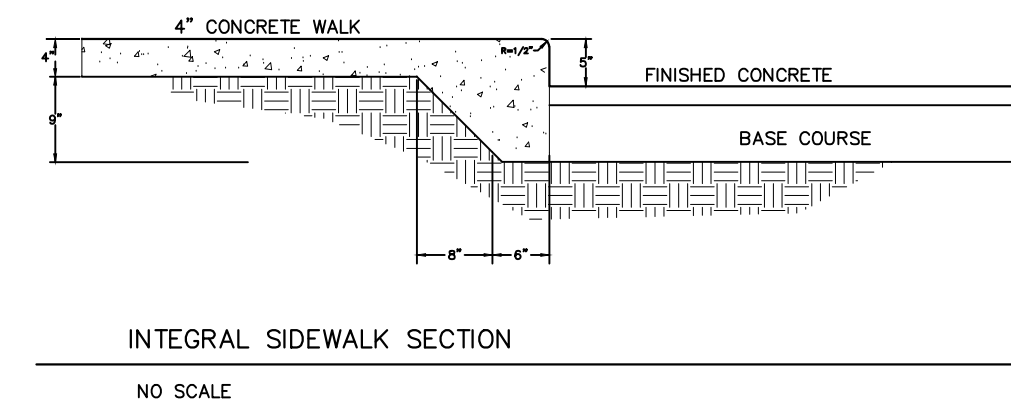
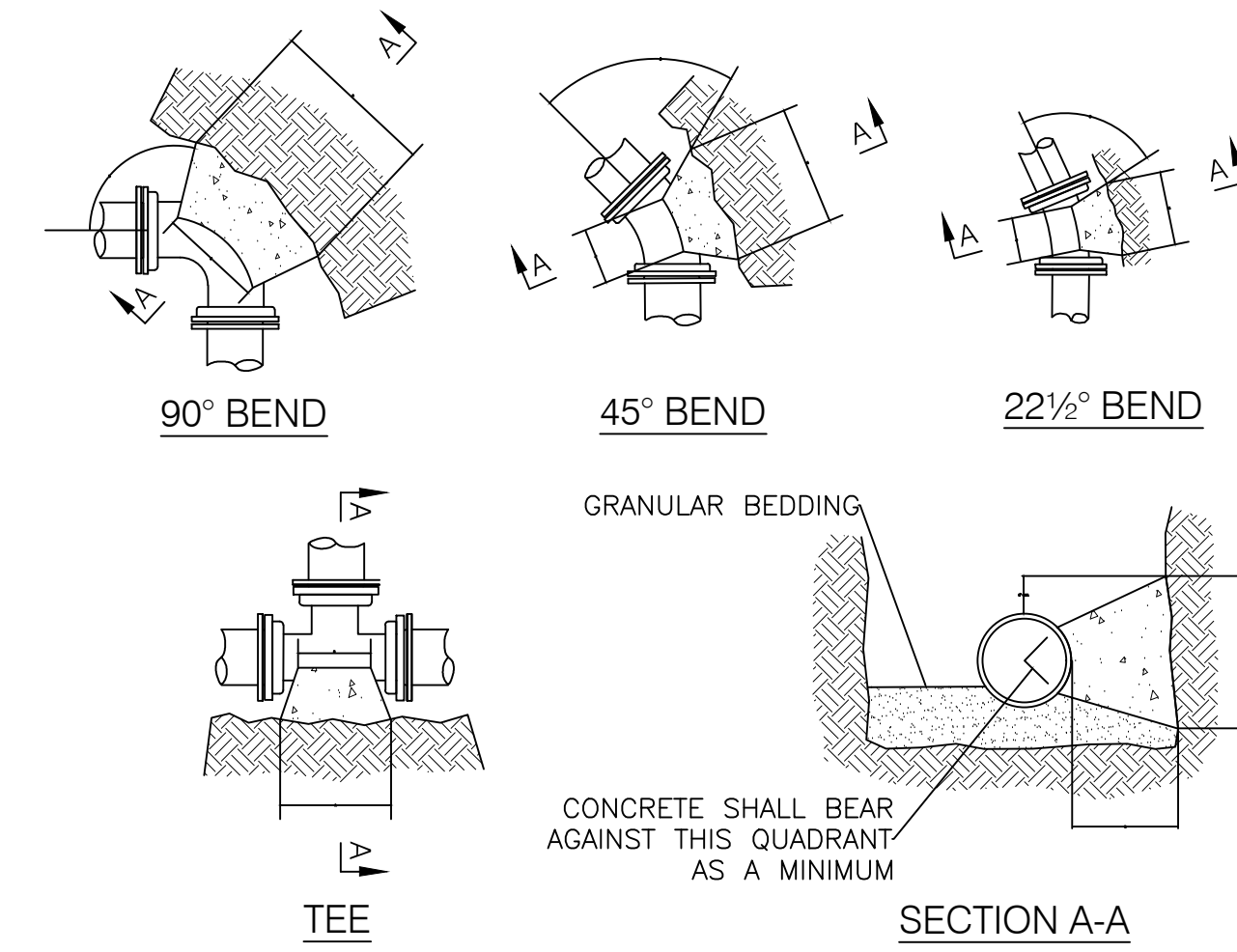


18" TYPE D CURB & GUTTER



STANDARD INSTALLATION WITHOUT A RISER

- NOTES:
1. CONSTRUCT LATERALS IN CONFORMANCE WITH CHAPTER COMM 82 OF THE WISCONSIN ADMINISTRATIVE CODE.
 2. LATERAL SLOPE SHALL BE 1/4" PER FOOT WHERE SUFFICIENT COVER EXISTS.
 3. WHERE LATERALS ARE NOT IMMEDIATELY CONNECTED TO BUILDING SEWERS THE ENDS OF THE LATERALS SHALL BE MARKED BY POSITIONING 4" X 4" BOARDS VERTICALLY FROM THE ENDS OF LATERALS TO AT LEAST 2' ABOVE THE GROUND SURFACE.



DIMENSION "D" SHALL BE AS LARGE AS POSSIBLE, BUT THE CONCRETE SHALL NOT INTERFERE WITH THE MECHANICAL JOINTS.

DIMENSION "C" SHALL BE AT LEAST 6 INCHES, AND LARGE ENOUGH TO MAKE THE "Θ" ANGLE EQUAL TO OR GREATER THAN 45 DEGREES WITH THE DIMENSION "A" AS SHOWN ON THE TABLE, OR GREATER, AND WITH DIMENSION "D" AS LARGE AS POSSIBLE.

CONCRETE SHALL BE CLASS "CC", SEE SECTION 03301

PIPE SIZE	BUTTRISS DIMENSIONS							
	TEES		22.5° BEND		45° BEND		90° BEND	
	A	B	A	B	A	B	A	B
6	1'-3"	1'-0"	1'-0"	1'-0"	1'-0"	1'-0"	1'-4"	1'-2"
8	1'-6"	1'-4"	1'-0"	1'-0"	1'-4"	1'-2"	1'-10"	1'-6"
10/12	2'-3"	2'-0"	1'-4"	1'-4"	1'-10"	1'-10"	2'-8"	2'-3"
14/16	3'-2"	2'-6"	1'-10"	1'-8"	2'-6"	2'-4"	3'-10"	2'-10"
18/20	4'-0"	3'-0"	2'-4"	2'-0"	3'-3"	2'-10"	5'-0"	3'-4"
22/24	5'-3"	3'-4"	2'-10"	2'-4"	4'-0"	3'-3"	6'-4"	3'-10"
30	6'-3"	4'-3"	3'-6"	3'-0"	5'-4"	3'-10"	8'-0"	4'-8"

* = FOR TEE THIS WILL BE THE BRANCH PIPE

DIMENSIONS IN THE TABLE ARE BASED ON A WATER PRESSURE OF 150 PSI AND SOIL RESISTANCE OF 2000 LBS./SQ.FT.

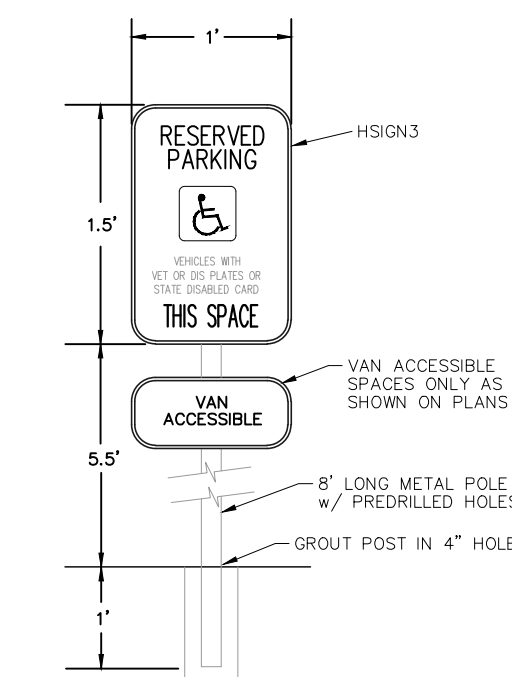
BUTTRISS DETAILS

NOTES - LAYOUT PLAN

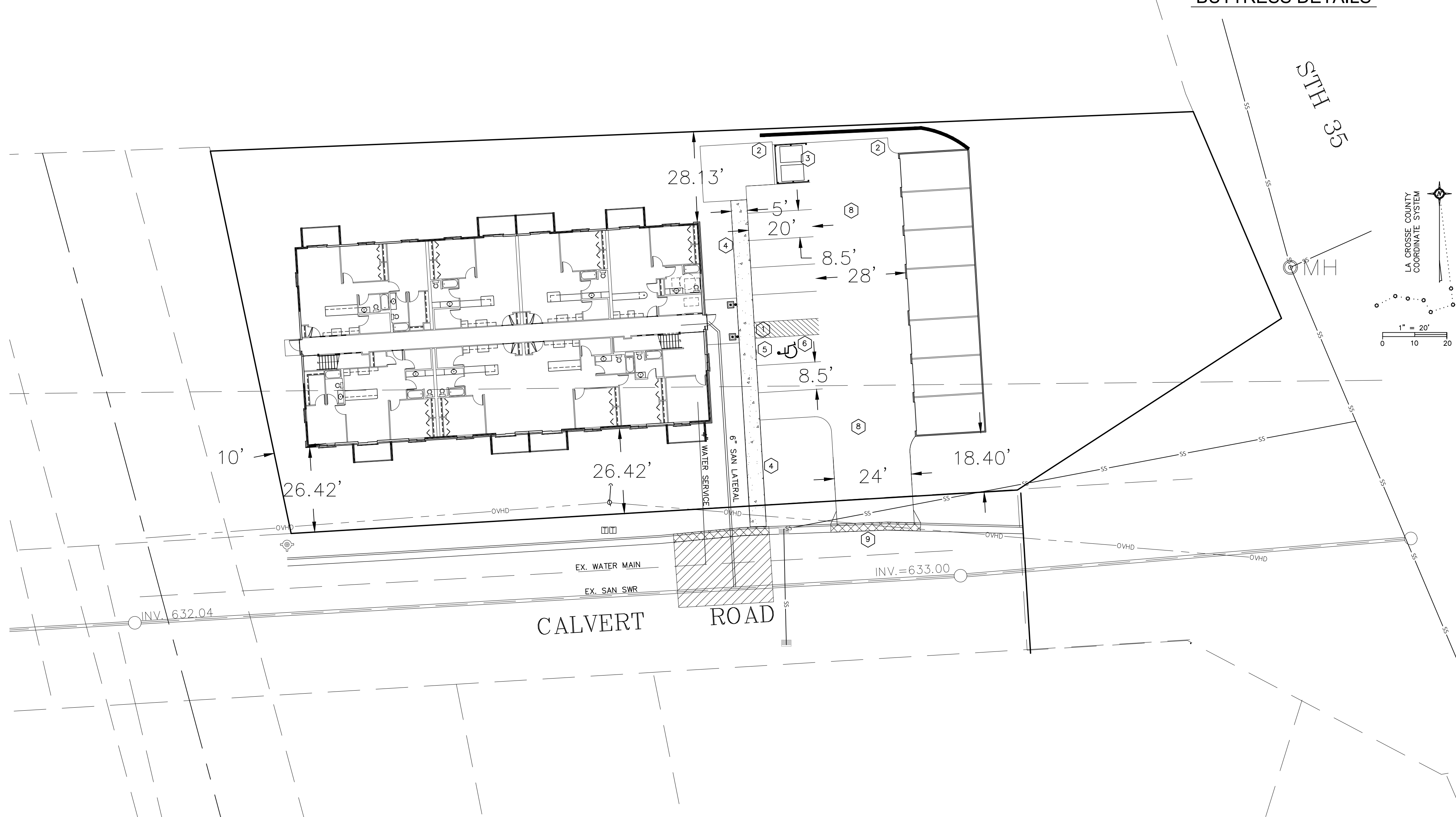
1. SIDEWALK SHALL BE FLUSH WITH EXISTING PAVEMENT IN THIS AREA.
2. 18" CURB & GUTTER - SEE DETAIL
3. DUMPSTER ENCLOSURE, SEE ARCHITECTURAL DETAILS
4. 5' CONCRETE SURFACE
5. HANDICAP PARKING SIGN, SEE DETAIL
6. HANDICAP STALLS AND PARKING STALLS SHALL BE PAINTED PER SPECIFICATION
7. INTEGRAL SIDEWALK - SEE DETAIL
8. 2.5" BITUMINOUS, 8" CABC
9. ENTRANCE PER CITY STANDARD - SEE DETAIL

LEGEND

- ▣ CURB INLET
- TELEPHONE PEDESTAL
- ↔ UTILITY POLE W/GUY WIRE
- ◆ HYDRANT
- FOUND 1" IRON PIPE, UNLESS NOTED
- ▨ REMOVE AND REPLACE 36" CURB AND GUTTER, PER CITY STANDARD
- ▧ SAW CUT PERIMETER, REPLACE w/ 10" CABC & 3" BITUMINOUS
- EXISTING CITY STORM SEWER



HANDICAP SIGN DETAIL
NO SCALE



LA CROSSE
ENGINEERING & SURVEYING CO., INC.
OFFICE: (608) 785-3433 • FAX: (608) 785-3432
www.lacrosseengineering.com

NICOLAI APARTMENTS
CALVERT ROAD, LA CROSSE, WI
SITE LAYOUT PLAN

DATE: 3/27/26
FILE: NICOLAI_CALVERT
DRAWN BY: FJH

CO