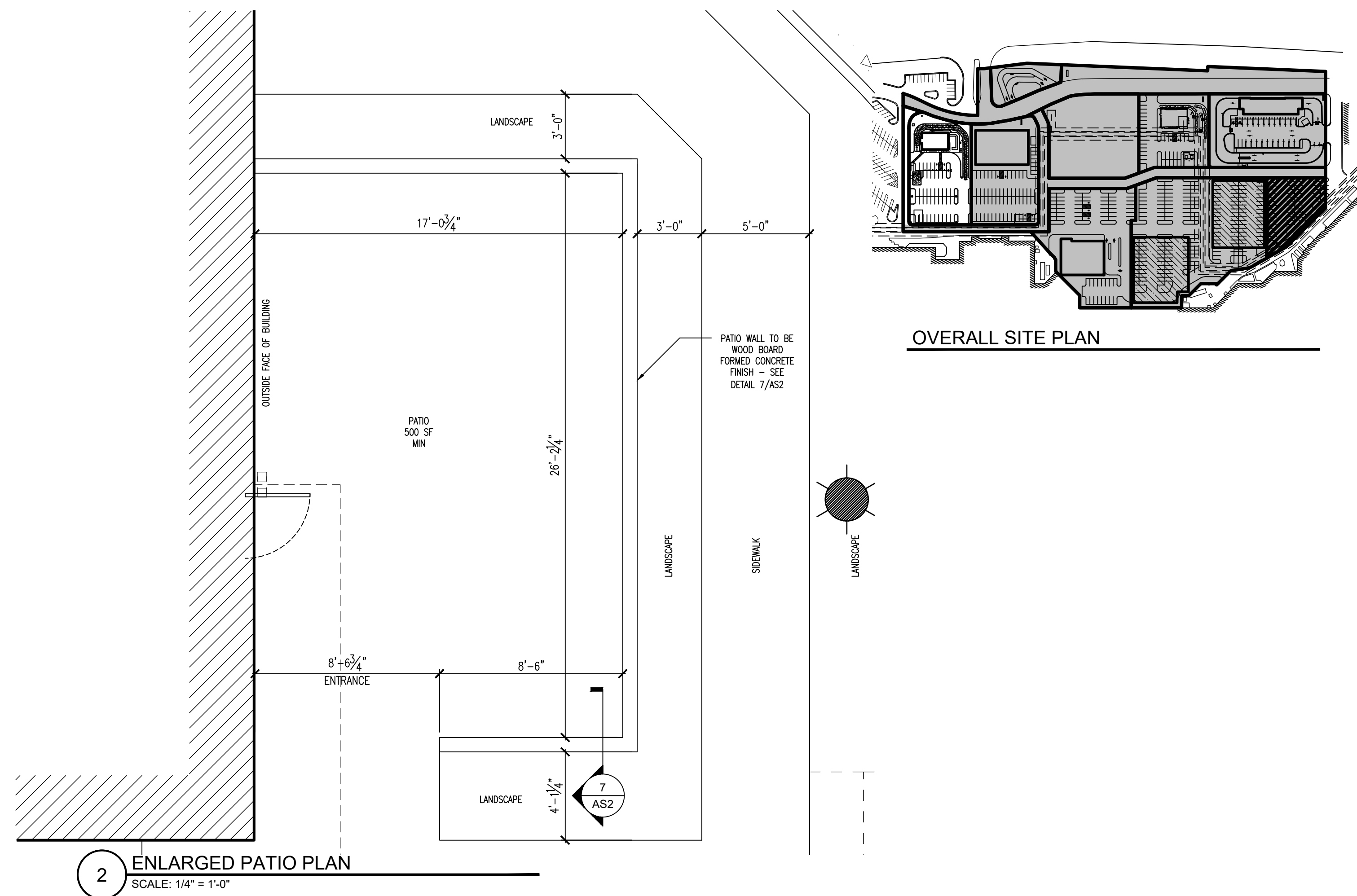
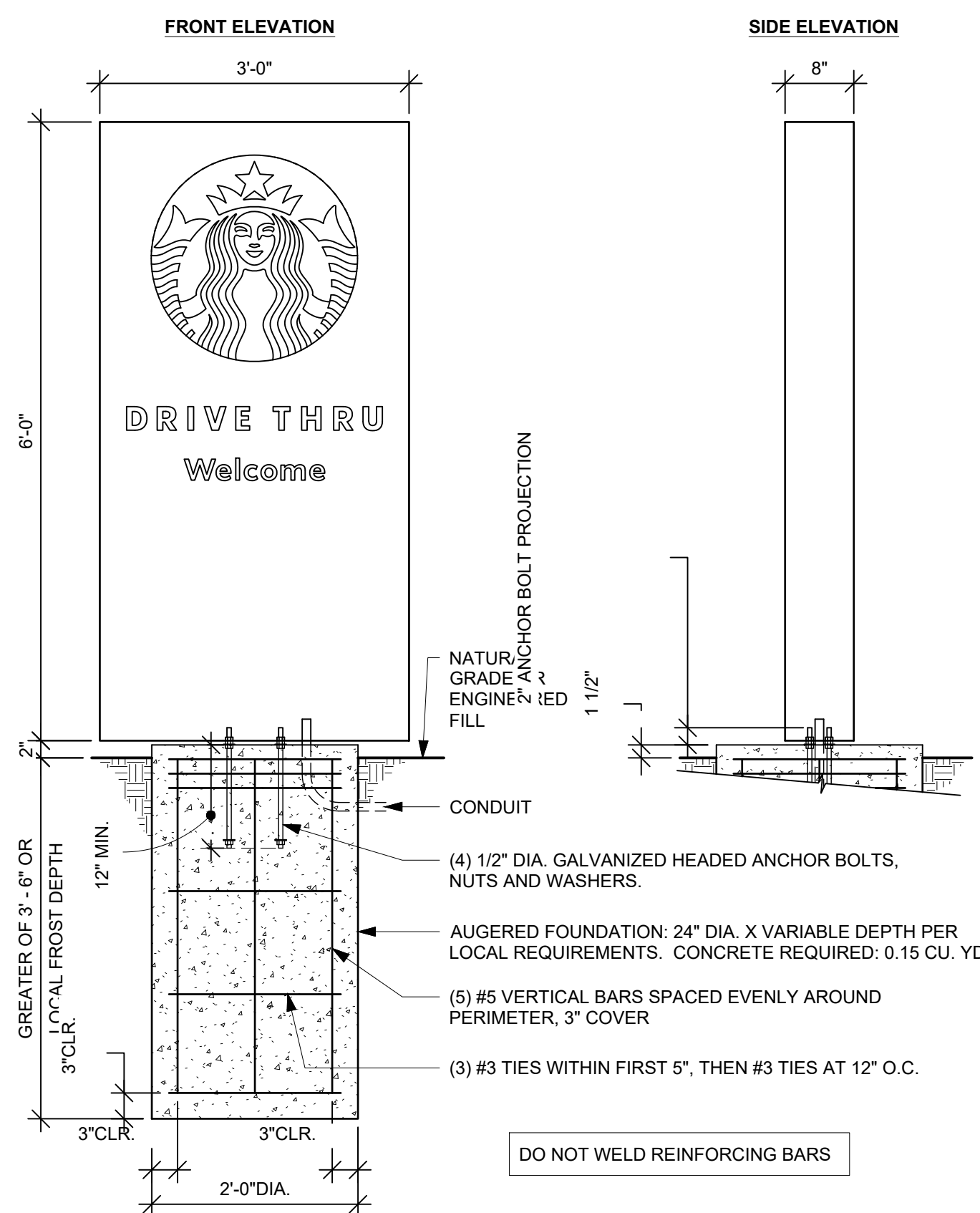


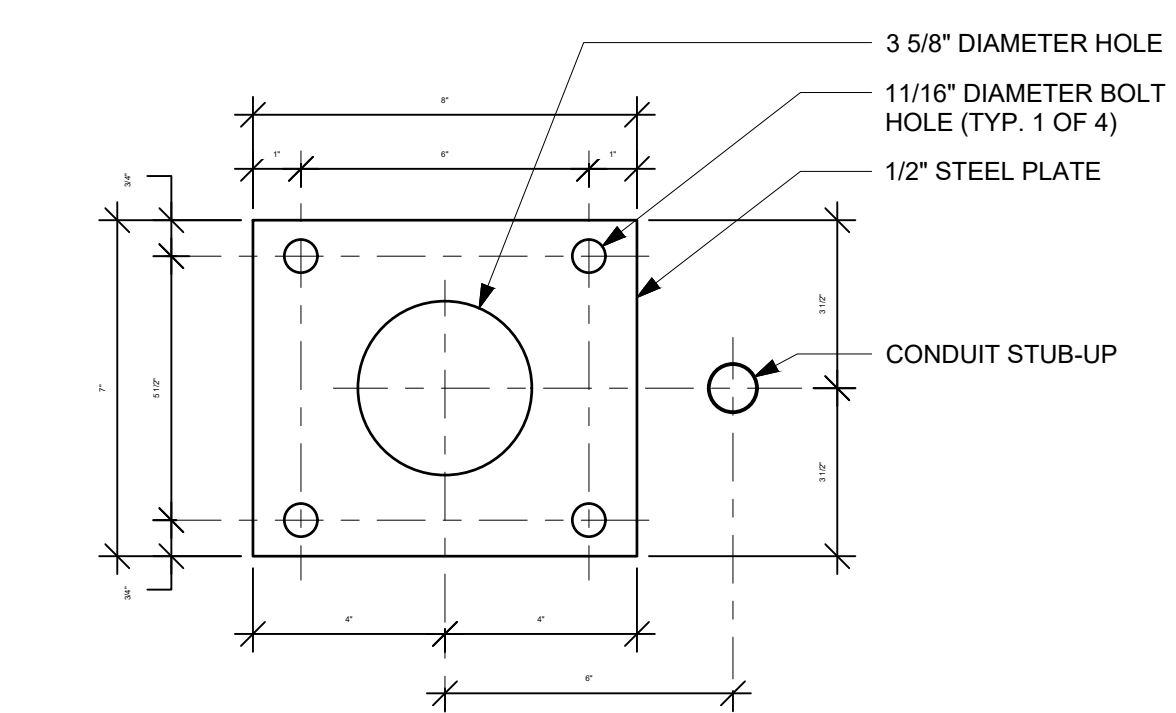
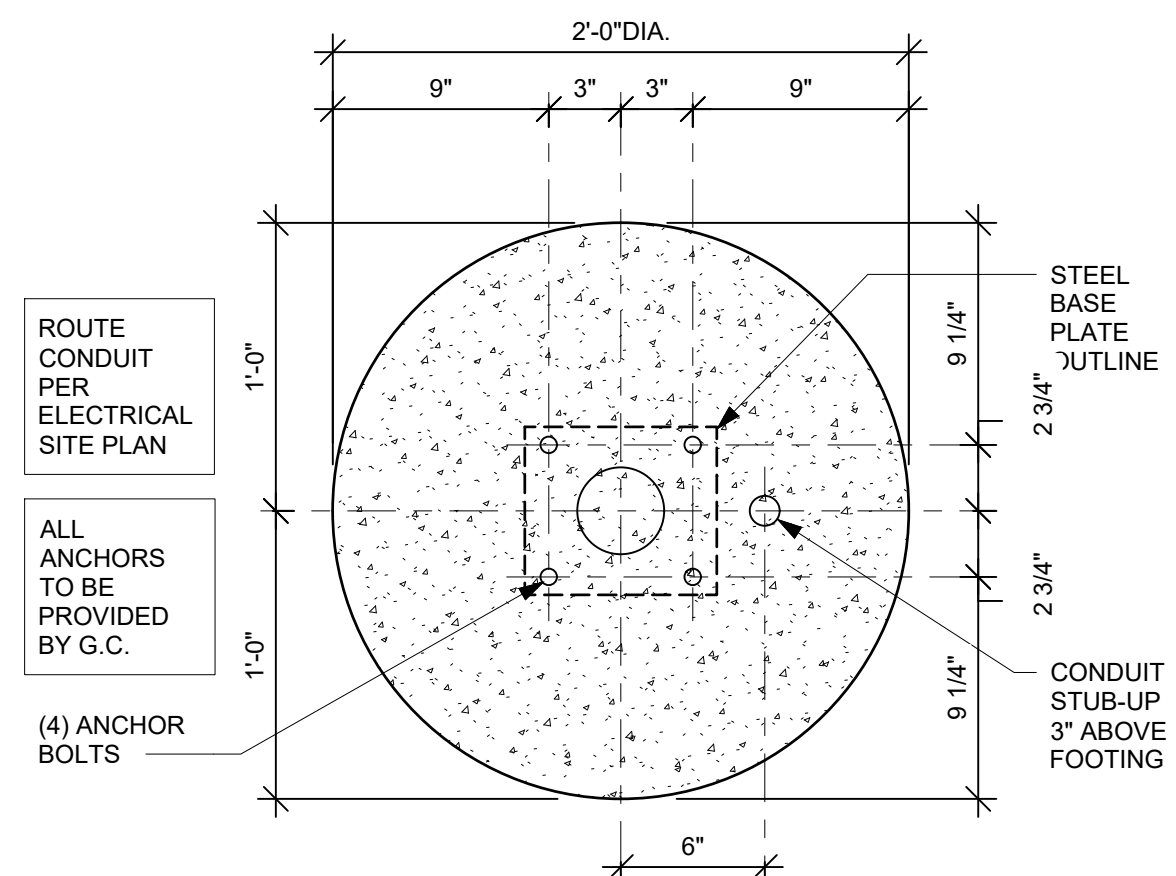
These documents in this form, electronic media, are being provided as your request. The information contained is proprietary to JTS Architects, Inc. and may not be reproduced, sold, distributed or utilized in any form on other projects without the express written permission of JTS Architects. Due to the unsecured nature of these documents, electronic media and the inability of the originator to establish controls over the use thereof, JTS Architects assumes no responsibility for any consequences arising out of the use of the data. It is the sole responsibility of the user to check the validity of all information contained herein. The user shall at all times refer to the signed and sealed construction drawings for the project during all phases of the project. The user shall assume all risks and liabilities resulting from the use of the information contained within the attached file.



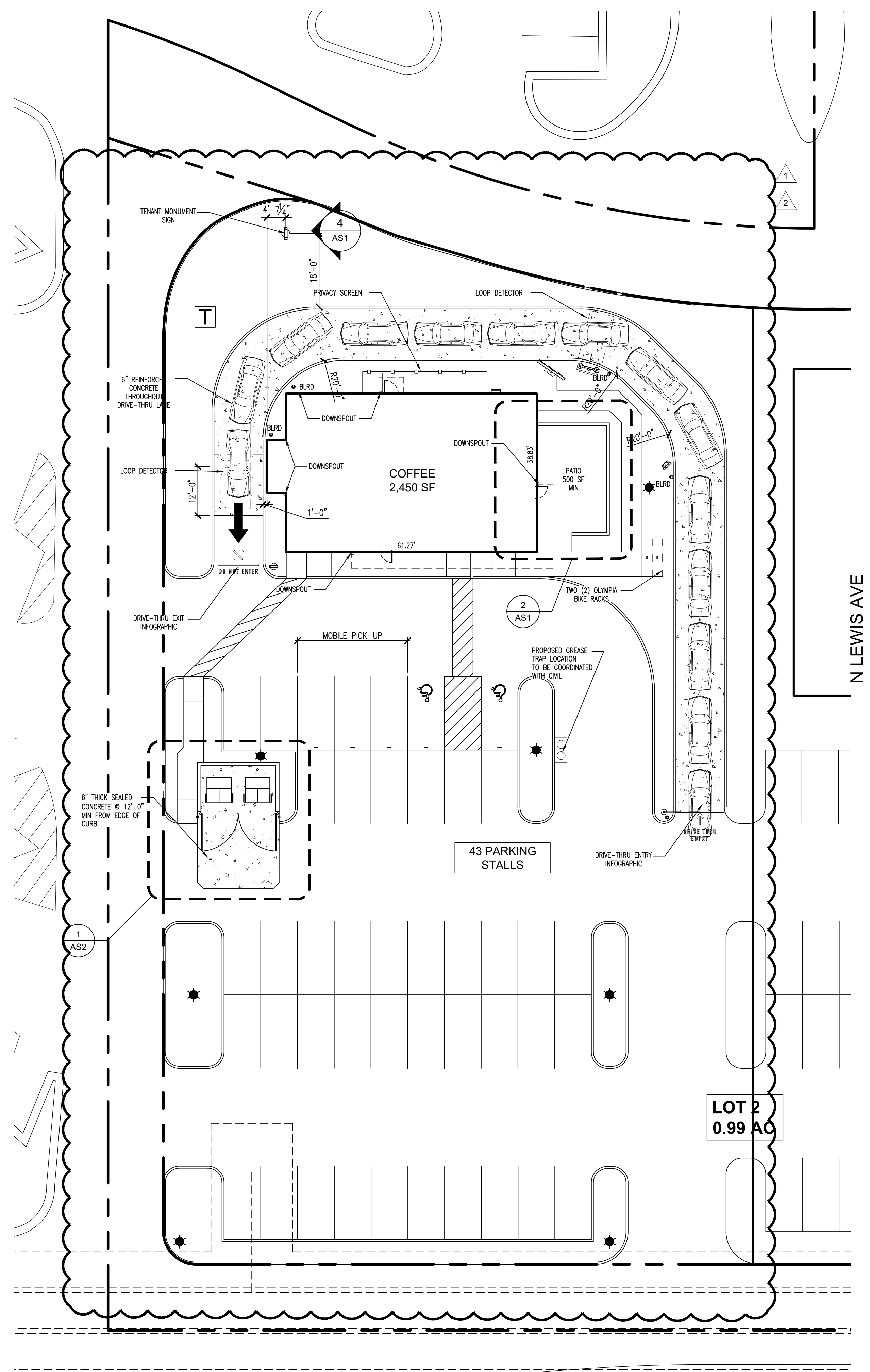
2 ENLARGED PATIO PLAN
SCALE: 1/4" = 1'-0"



3 MONUMENT SIGN ELEVATION & DETAILS
TBD



G.C. RESPONSIBLE FOR FOUNDATIONS AND FOOTINGS ON ALL MENU BOARD AND DRIVE THRU ELEMENTS. SIGNAGE VENDOR TO SUPPLY TEMPLATES AND INSTALL MENU BOARDS ONLY.

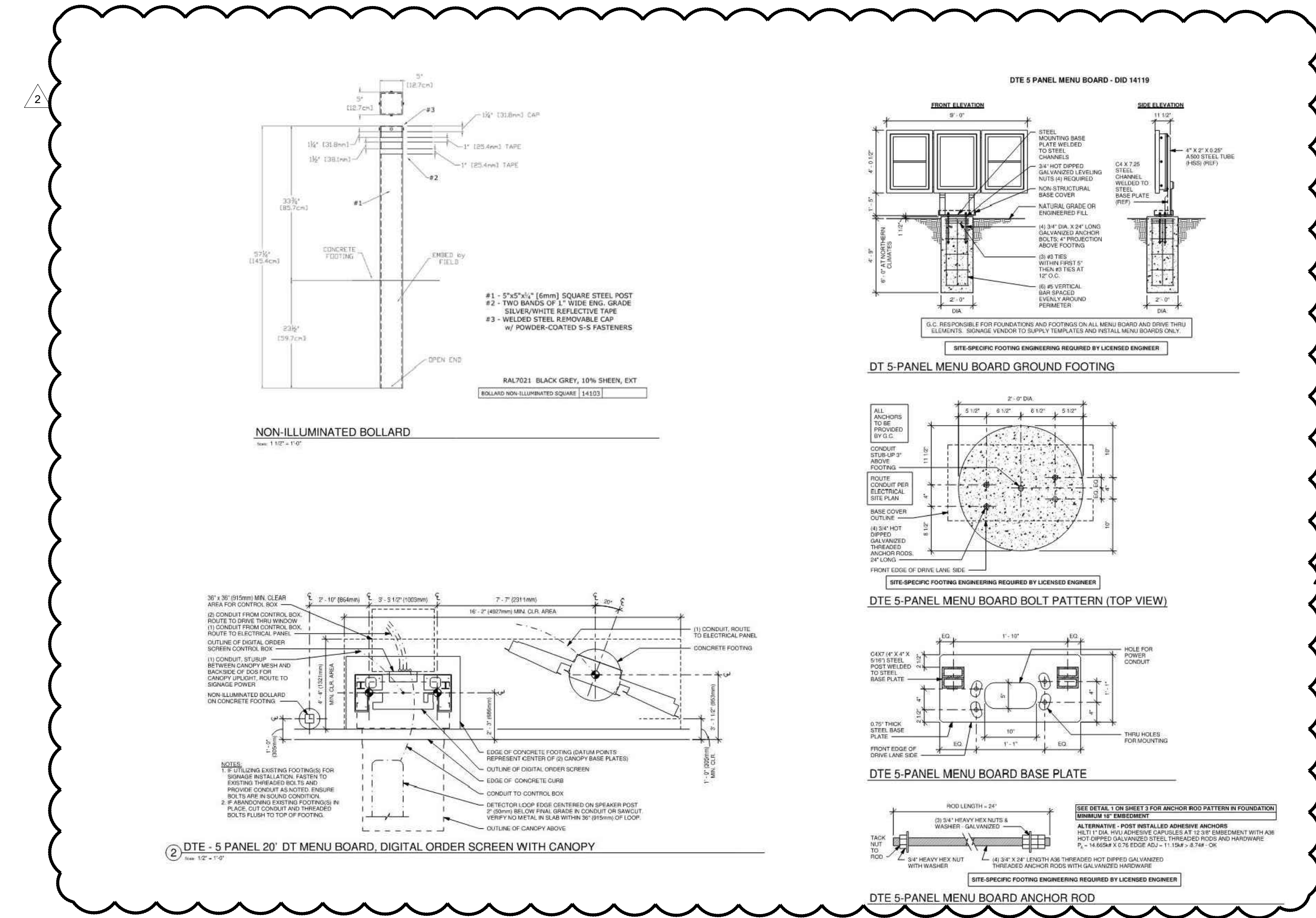
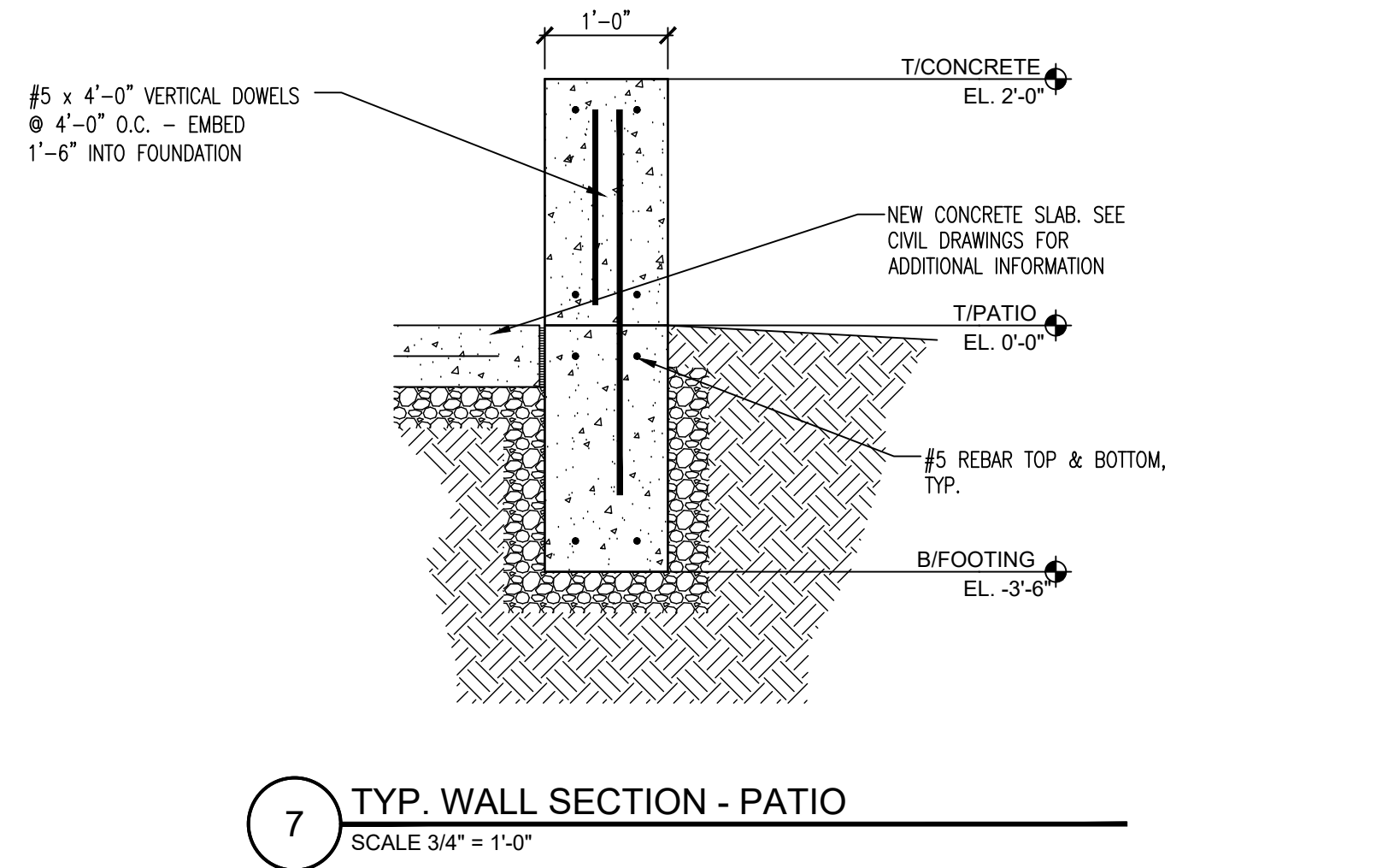
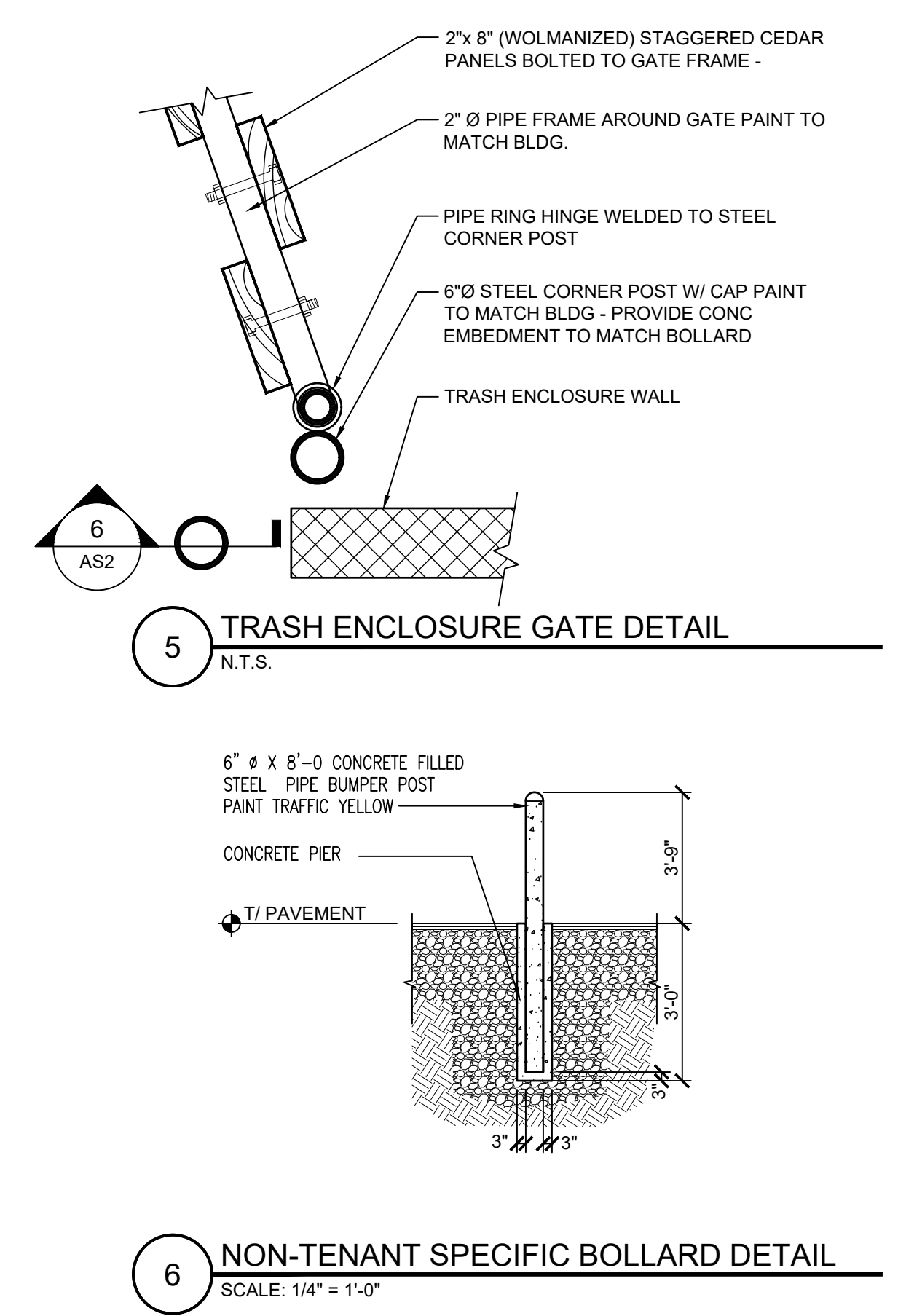
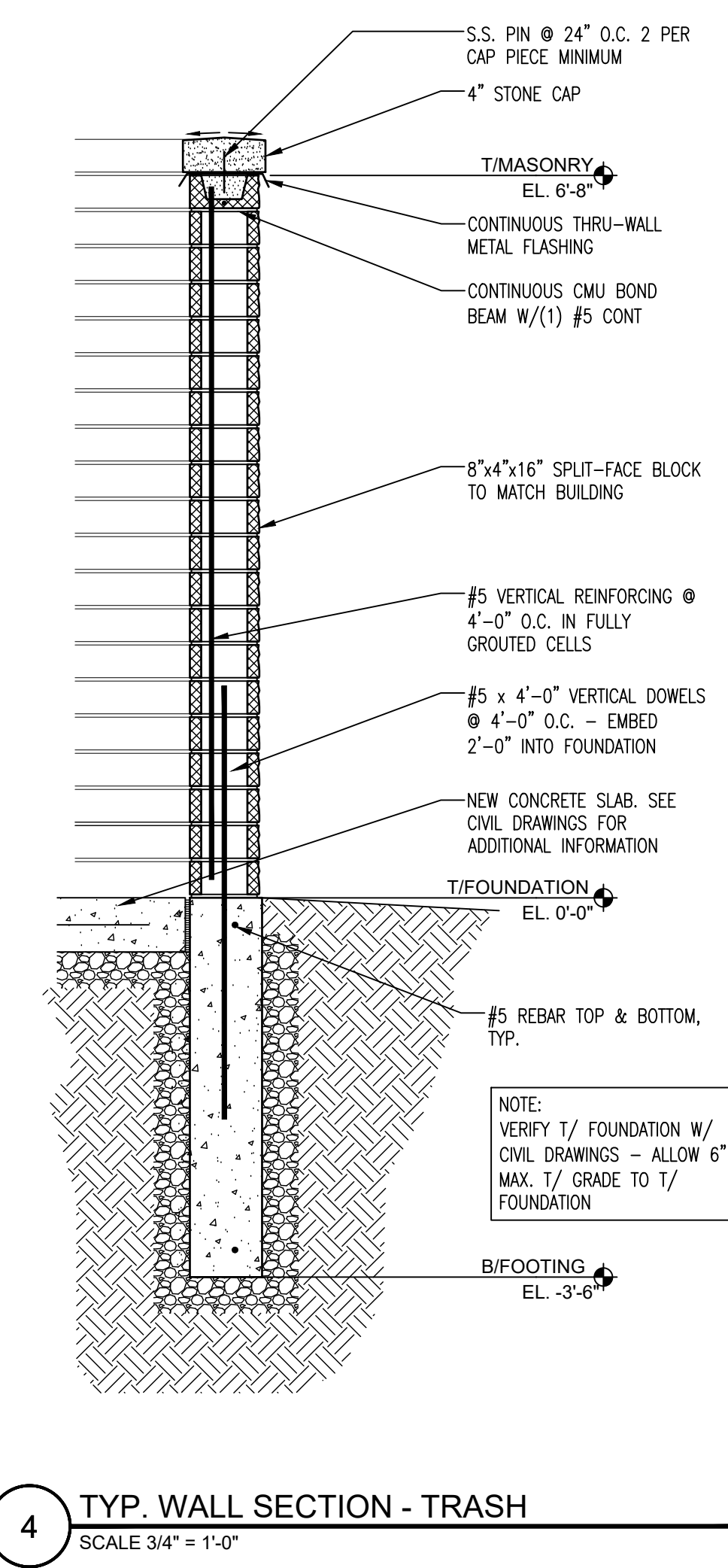
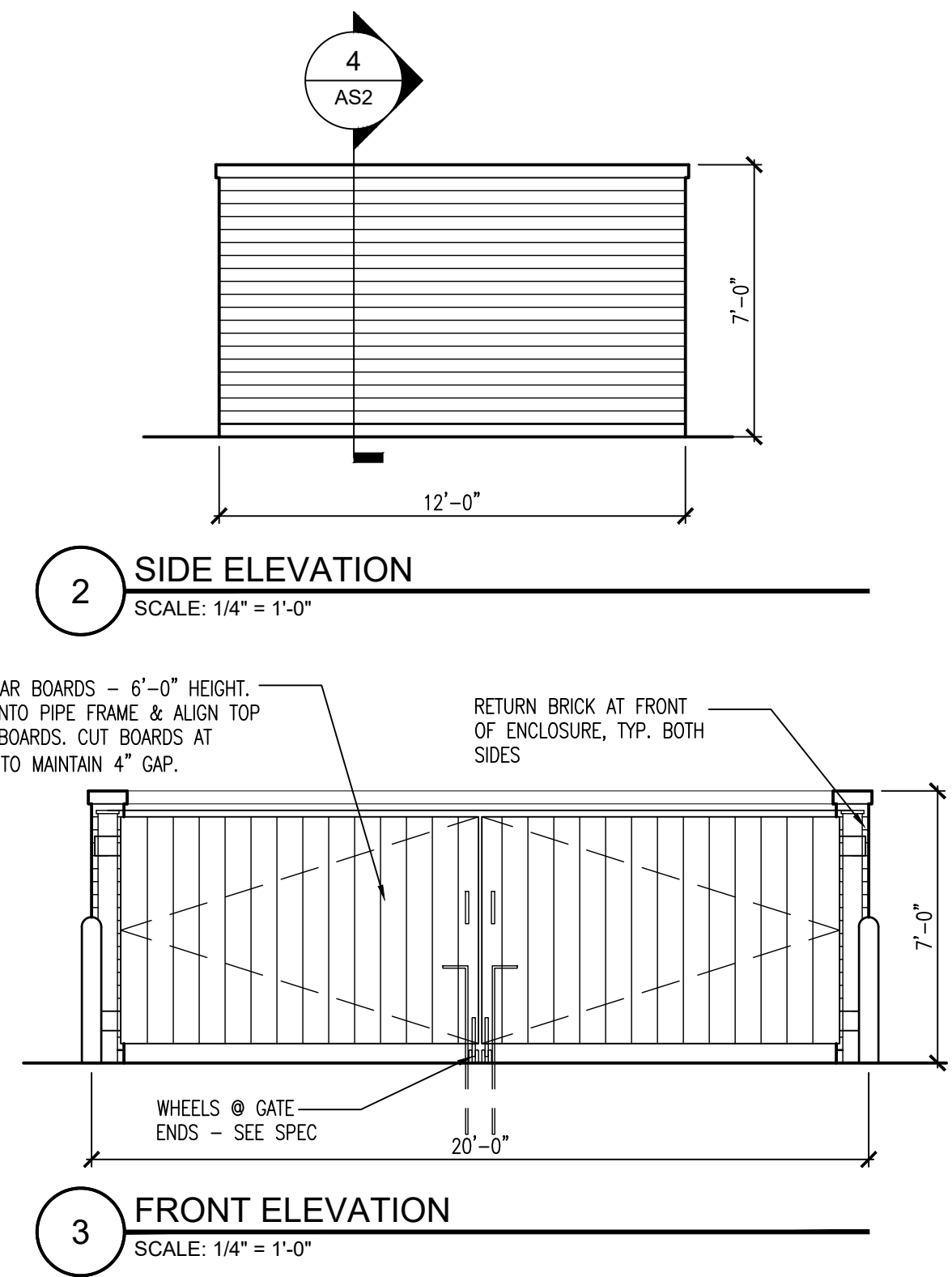
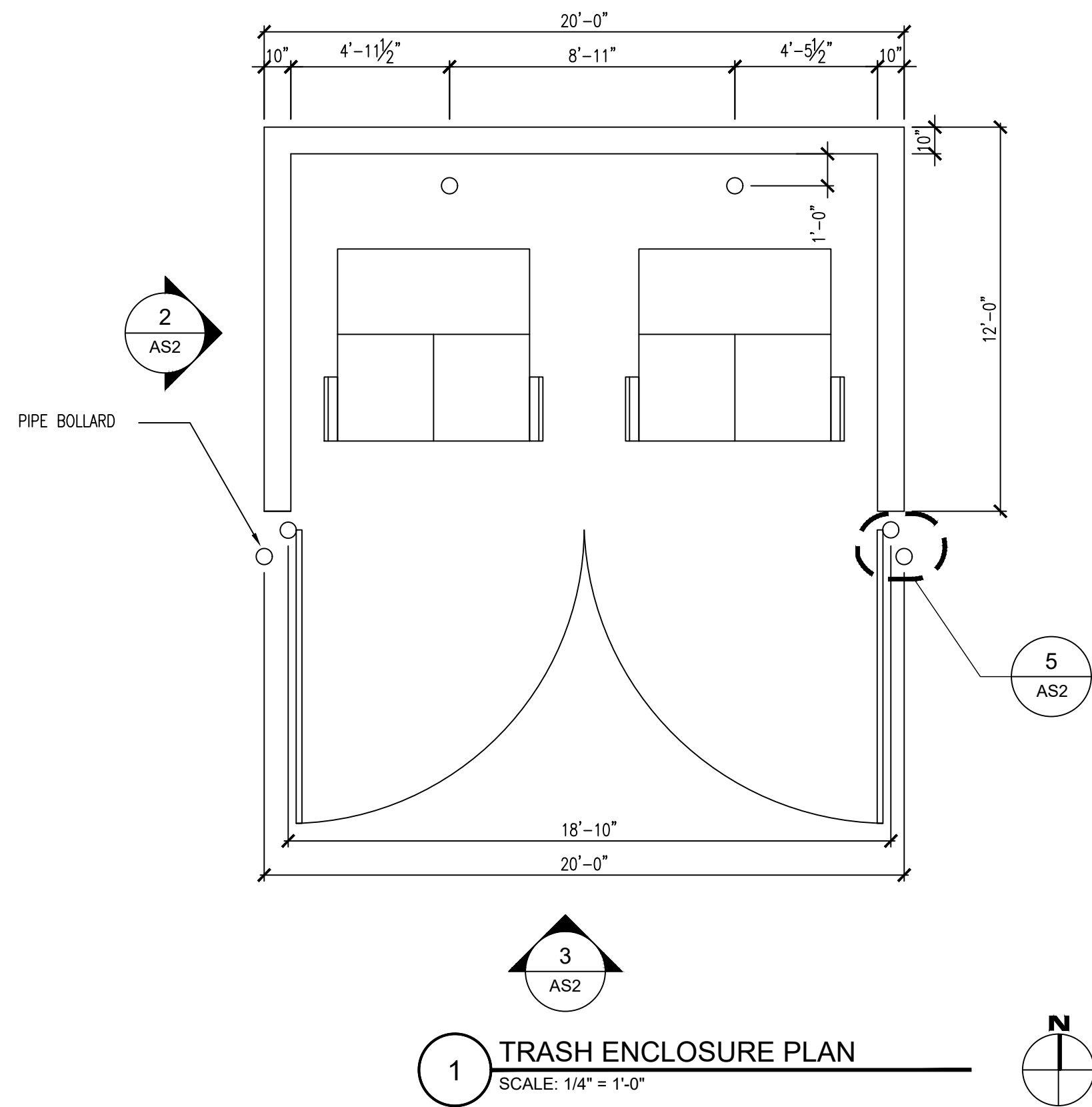


1 ARCHITECTURAL SITE PLAN
SCALE: 1/16" = 1'-0"

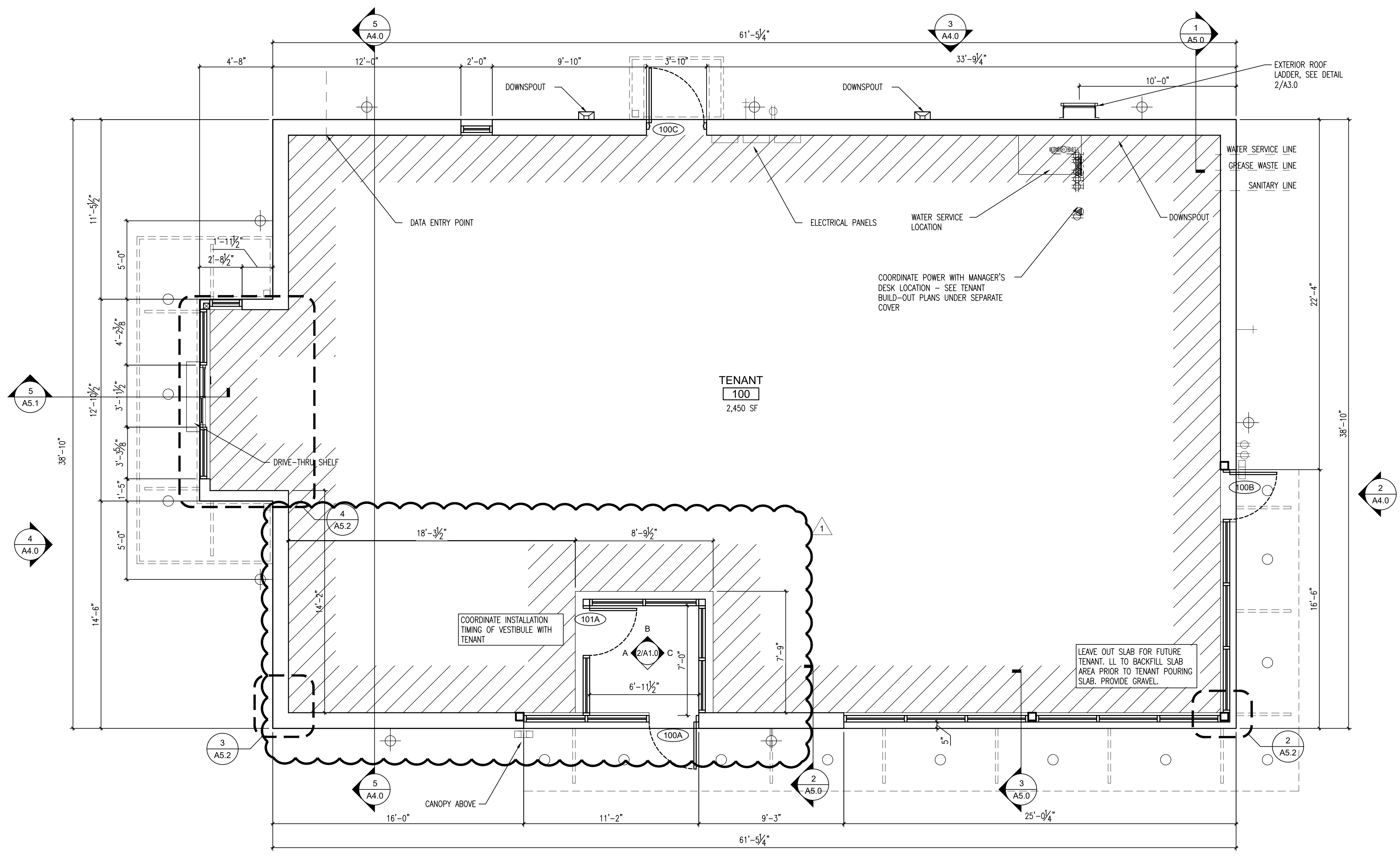
NOTE: COORDINATE SQUARE BOLLARD DETAIL WITH TENANT DRAWINGS. TOTAL COUNT: 8

NOTE: COORDINATE DRIVE-THRU EQUIPMENT LOCATION WITH TENANT DRAWINGS.

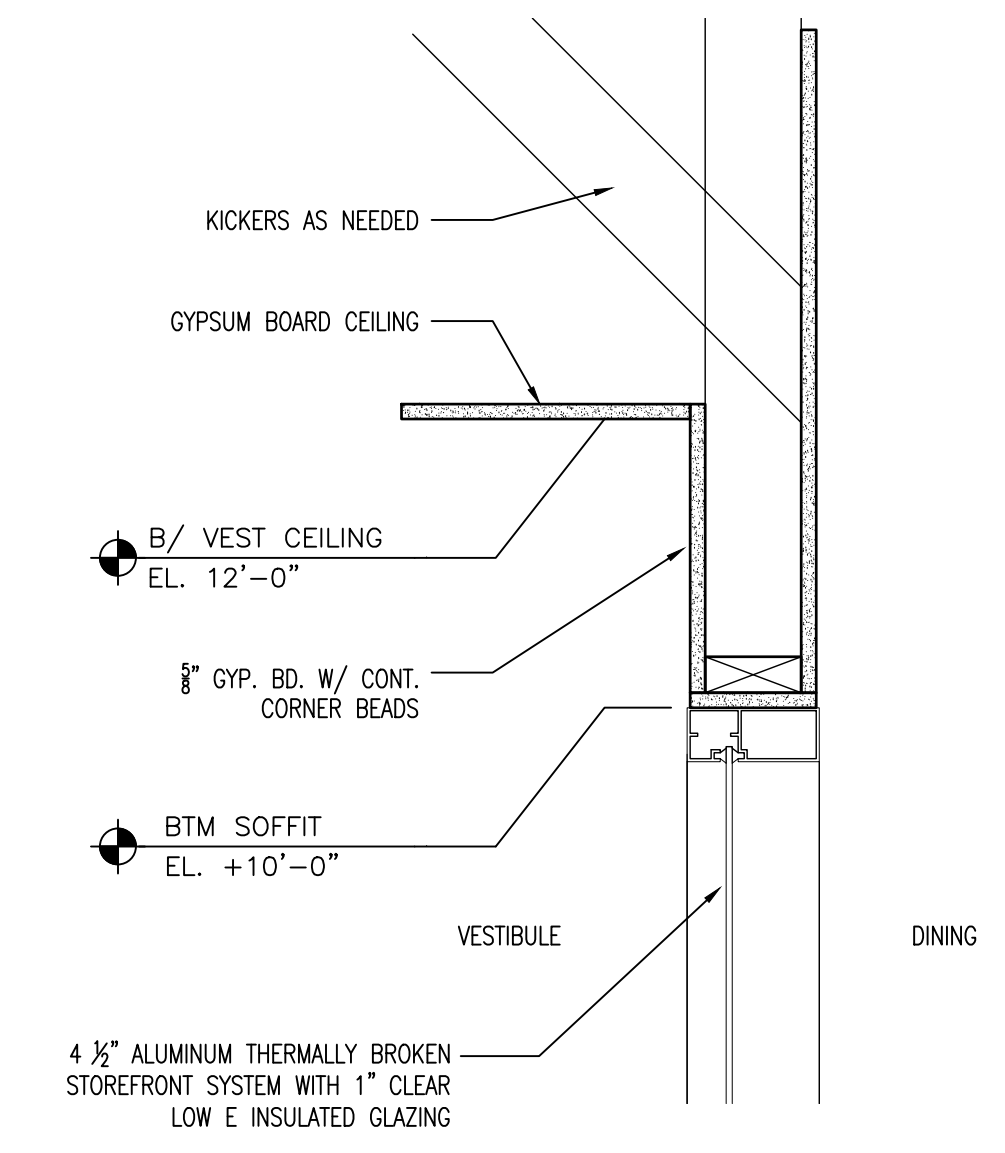
These documents in this form, electronic media, are being provided as your request. The information contained is proprietary in nature and may only be utilized for the named project. All documents information contained herein including, but not limited to, symbols, tables, blocks, details, etc. may not be reproduced, sold, distributed or utilized in any form on other projects without the express written permission of JTS Architects. Due to the unsecured nature of these documents, electronic media and the ability of the engineer to establish controls over the use thereof, JTS Architects assumes no responsibility for any consequences arising out of the use of the data. It is the sole responsibility of the user to check the reliability of all information contained herein. The user shall at all times refer to the signed and sealed contribution drawings for the project during all phases of the project. The user shall assume all risks and liabilities resulting from the use of the data. By accepting and/or extracting the information from the attached file, the recipient acknowledges and agrees to the above terms regarding the use of the information contained within the attached file.



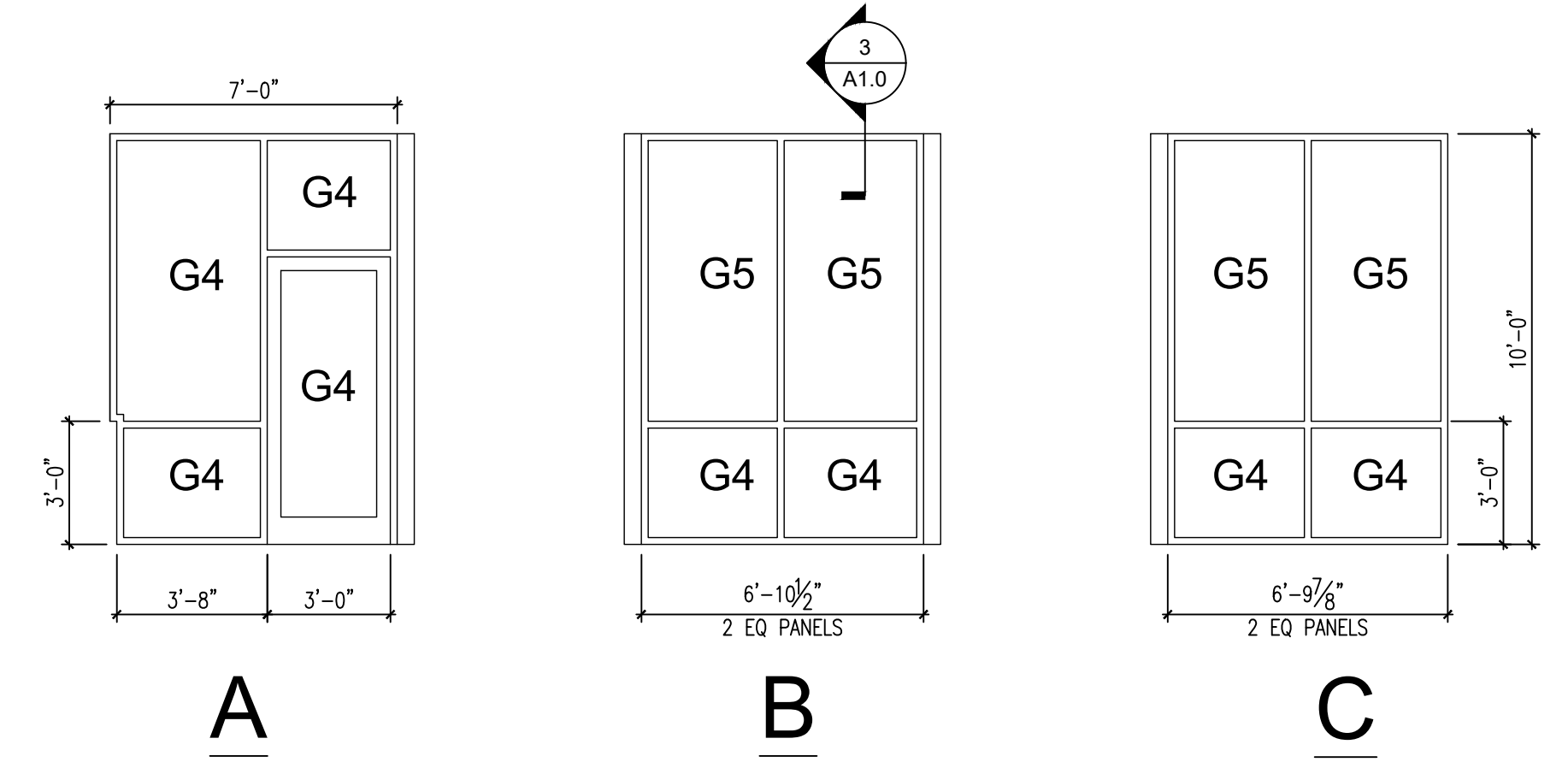
These documents in this form, electronic media, are being provided as per request. The information contained is proprietary in nature and may only be utilized for the current project. All documents information contained herein including, but not limited to, symbols, legends, blocks, details, etc. may not be reproduced, sold, distributed or utilized in any form on other projects without the express written permission of JTS Architects. Due to the unmeasured nature of these documents (electronic media) and the inability of the engineer to establish controls over the use thereof, JTS Architects assumes no responsibility for any consequences arising out of the use of the data. It is the sole responsibility of the user to check the validity of all information contained herein. The user shall at all times refer to the signed and sealed construction drawings for the project during all phases of the project. The user shall assume all risks and liabilities resulting from the use of this data. By accepting and/or extracting the information from the attached file, the recipient acknowledges and agrees to the above terms regarding the use of the information contained within the attached file.



1 FLOOR PLAN
Scale: 1/4" = 1'-0"



3 SOFFIT DETAIL
SCALE: 1 1/2" = 1'-0"



2 VESTIBULE ELEVATIONS

GLAZING	
G4	1/4" GLASS (CLEAR) FULLY TEMPERED
G5	1/4" GLASS (CLEAR)

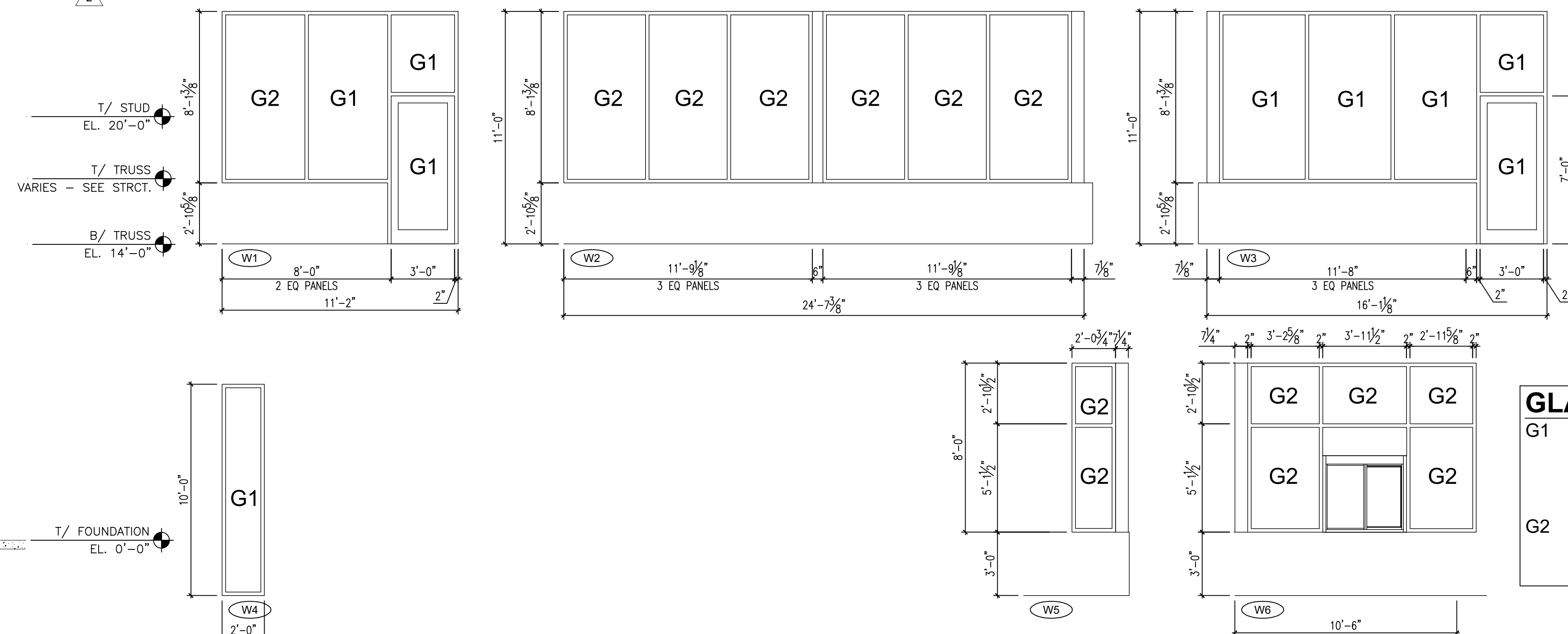
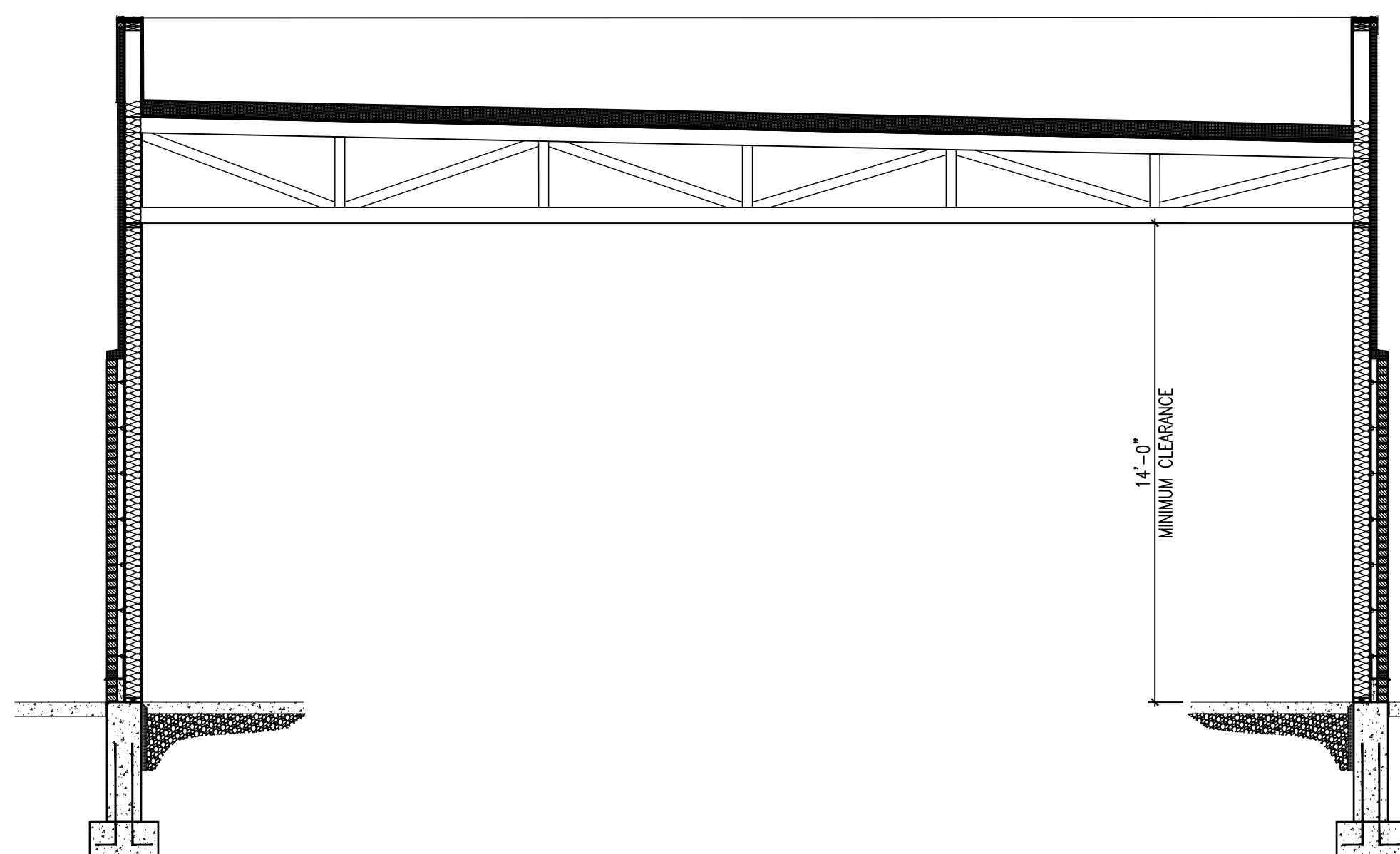
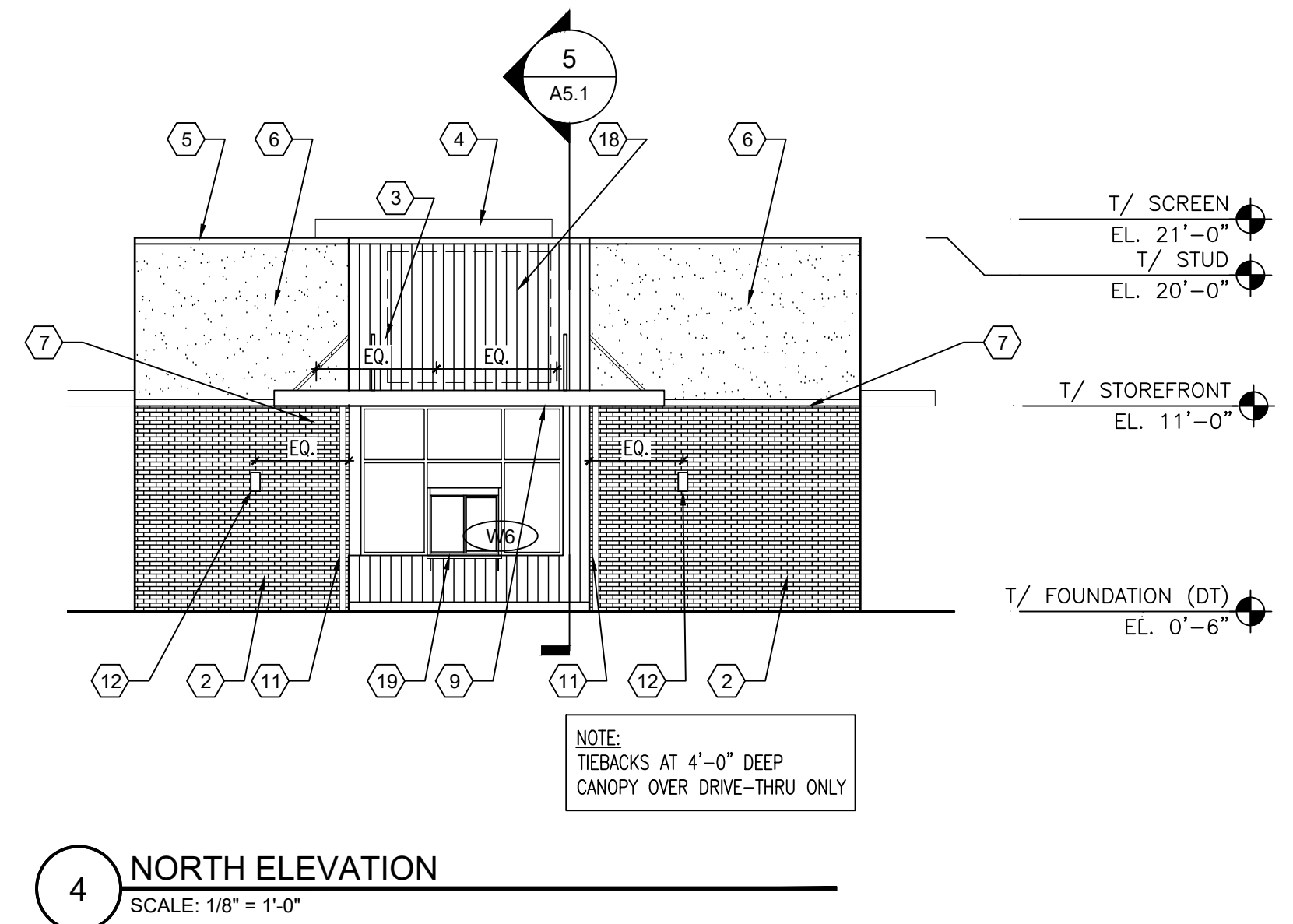
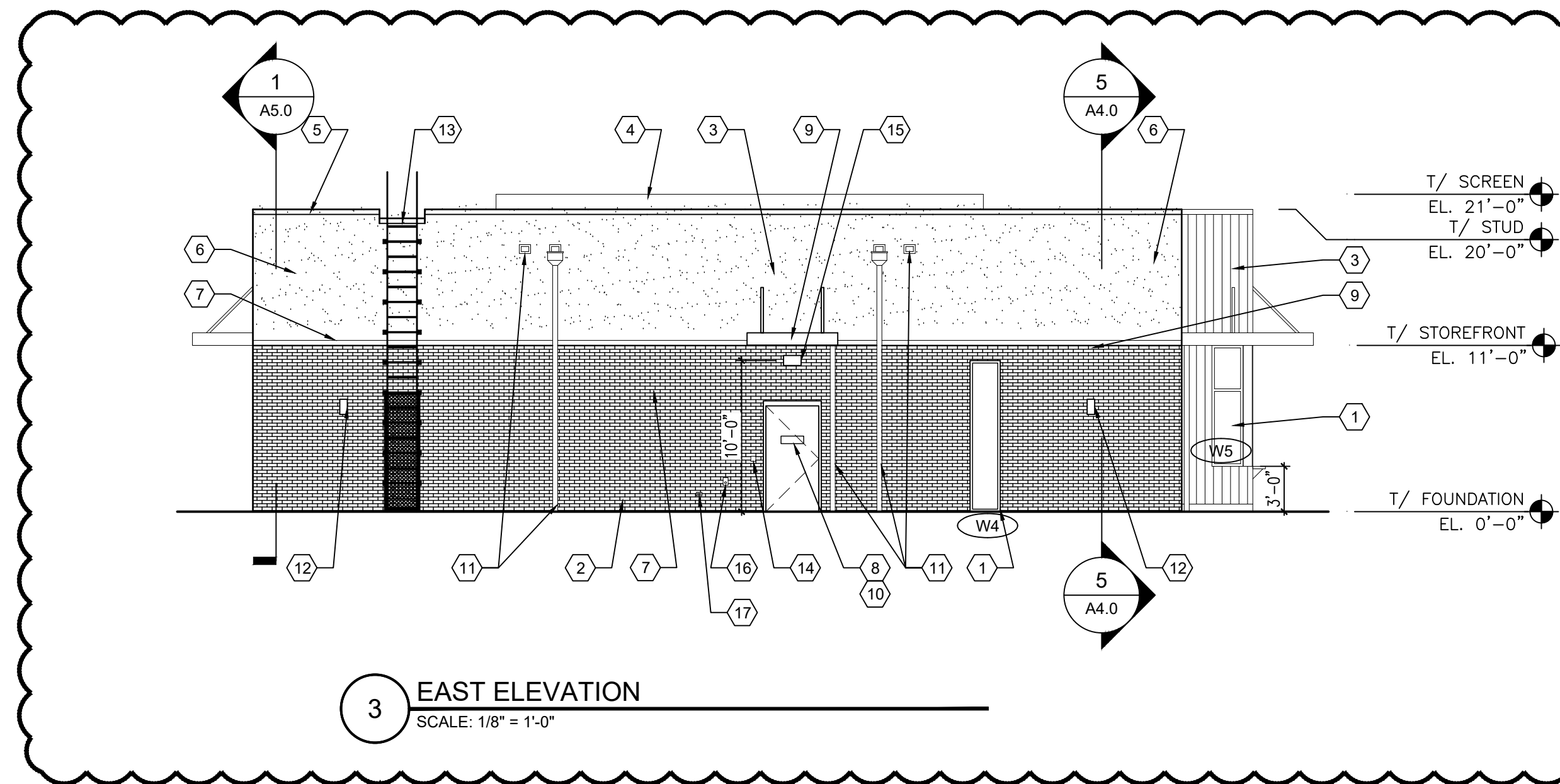
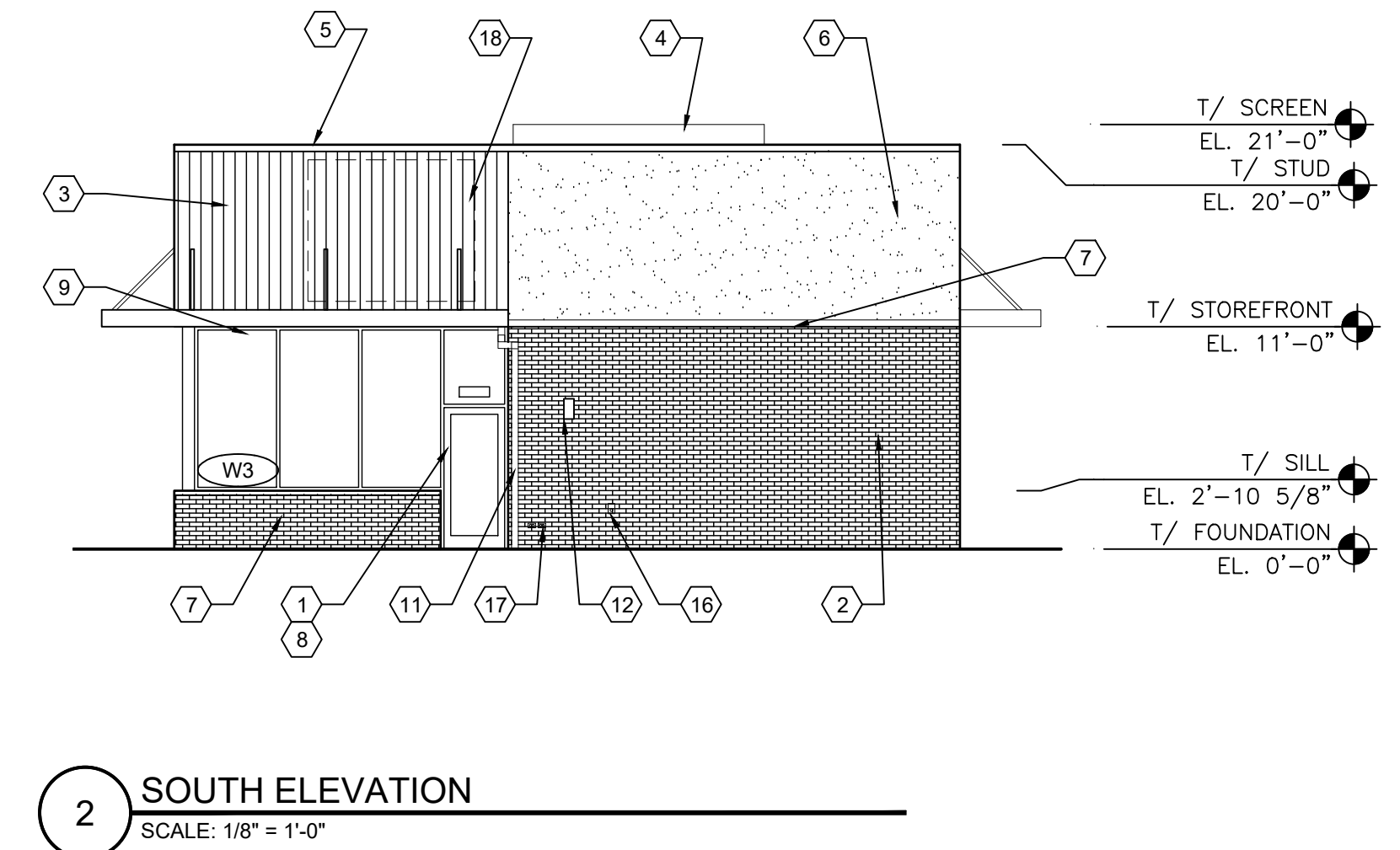
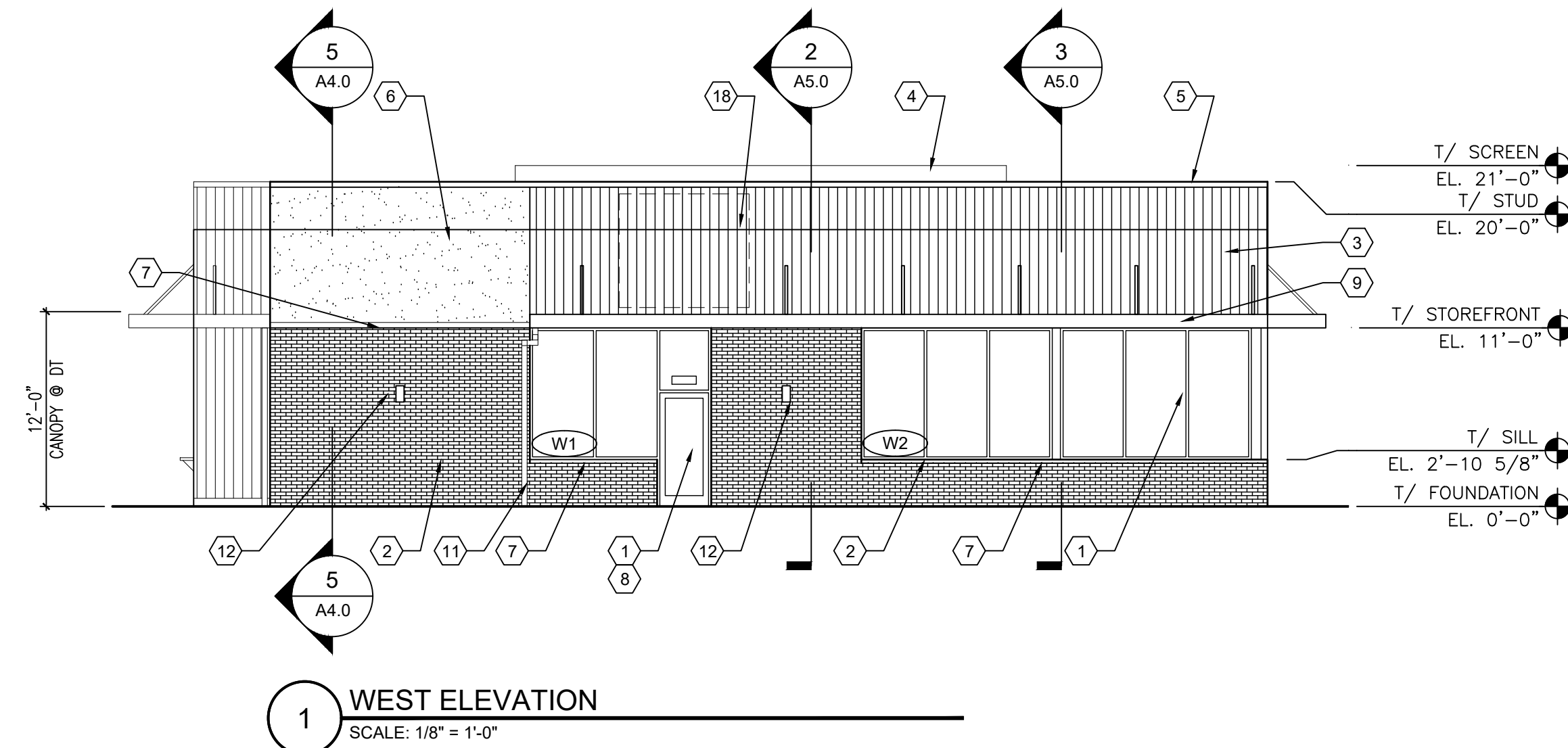
DATE	SUBMITTED FOR
10/3/23	TENANT REVIEW
05/08/24	TENANT COMMENTS
06/18/24	TENANT COMMENTS

These documents in this form, electronic media, are being provided as your request. The information contained is proprietary to JTS Architects, LLC and may not be reproduced, sold, distributed or utilized in any form on other projects without the express written permission of JTS Architects, LLC. Due to the unsecured nature of these documents, electronic media and the inability of the originator to establish controls over the use thereof, JTS Architects assumes no responsibility for any consequences arising out of the use of the data. It is the sole responsibility of the user to check the reliability of all information contained herein. The user shall refer to the signed and sealed construction drawings for the project during all phases of the project. The user shall assume all risks and liabilities resulting from the use of the data. By accepting and/or extracting the information from the attached file, the recipient acknowledges and agrees to the use of the information contained within the attached file.

EXTERIOR ELEVATION KEYNOTES

- 1 ALUMINUM STOREFRONT SYSTEM W/ CLEAR 1" INSULATED GLAZING (NON-TINTED, NON-REFLECTIVE)
- 4 1/2" KAWNEER IS451 - MATTE FINISH - MTO028-FLAT BLACK
- 2 MODULAR BRICK - PEWTER MISSION - RUNNING BOND - MUTUAL MATERIALS 888.688.8250 OR EQUAL TO MATCH
- SM100 GRAY - COLORED MORTAR
- 3 WOOD SIDING - 1200 PRETZEL MEDIUM BROWN WITH DARK BROWN GLAZE 8" W/ 1/16" REVEAL - SANDBLAST TEXTURE -
VERTICALLY STACKED - IDENTITY WOOD PRODUCTS OR SIMILAR
- 4 CORRUGATED METAL ROOF SCREEN - MATTE FINISH - MTO028-FLAT BLACK
- 5 PRE-FINISHED ALUMINUM COPING - - MATTE FINISH - MTO028-FLAT BLACK - UNA-CLAD OR EQUAL
- 6 EIFS - SW 7030 ANEW GRAY - SANDBLAST TEXTURE - DRYVIT OR EQUAL
- 7 STONE SILL - 224 SLOPES - BRECKENRIDGE - SHOULDICE OR EQUAL
- 8 PROVIDE BUILDING ADDRESS ABOVE FRONT ENTRY DOOR & ON REAR ACCESS DOOR
- 9 ALUMINUM BROW CANOPY - MATTE FINISH - MTO028-FLAT BLACK - MAPES OR EQUAL
- 10 HOLLOW METAL DOOR - PAINT TO MATCH STOREFRONT
- 11 PRE-FINISHED ALUMINUM SCUPPER/CONDUCTOR HEAD/GUTTER - MATTE FINISH - MTO028-FLAT BLACK
- 12 EXTERIOR WALL SCONCES MOUNTED AT 7'-0" A.F.F. TO CENTER OF J-BOX - PROVIDE BLOCKING AS REQUIRED
- 13 EXTERIOR ROOF LADDER - SEE DETAIL 3/A1.0 - PAINT TO MATCH MASONRY
- 14 LANDLORD KEY BOX @ 42" A.F.F. - MASTERLOCK 5423D
- 15 SECURITY LIGHT @ 9'-0" A.F.F. TO CENTER OF J-BOX
- 16 HOSEBIB - SEE PLUMBING PLANS
- 17 GFCI ELECTRICAL OUTLETS - SEE ELECTRICAL PLANS
- 18 FUTURE SIGNAGE AREAS
- 19 DRIVE-THRU ALUMINUM SHELF

TENANT SIGNAGE NOTE:
 - BUILDING SIGNAGE WILL BE REVIEWED AS TENANT SUBMITS THEIR SIGN PERMIT APPLICATIONS. CONTRACTOR TO PROVIDE 8" PLYWOOD SHEATHING AT ALL SIGN BOARD AREAS.



GLAZING	
G1	1" LOW E GLASS (CLEAR) MAX WINTER U-VALUE: 0.29 SUMMER U-VALUE: 0.27 SHGC: 0.38 FULLY TEMPERED
G2	1" LOW E GLASS (CLEAR) MAX WINTER U-VALUE: 0.29 SUMMER U-VALUE: 0.27 SHGC: 0.38

5 CROSS SECTION
SCALE: 1/4" = 1'-0"

6 STOREFRONT ELEVATIONS
SCALE: 1/4" = 1'-0"

DATE	SUBMITTED FOR
10/3/23	TENANT REVIEW
05/08/24	TENANT COMMENTS
06/18/24	TENANT COMMENTS

SHEET TITLE
BUILDING ELEVATIONS & DETAILS

DRAWN BY:
 S.S.
 JOB NO.
 3140.a
 SHEET

A4.0