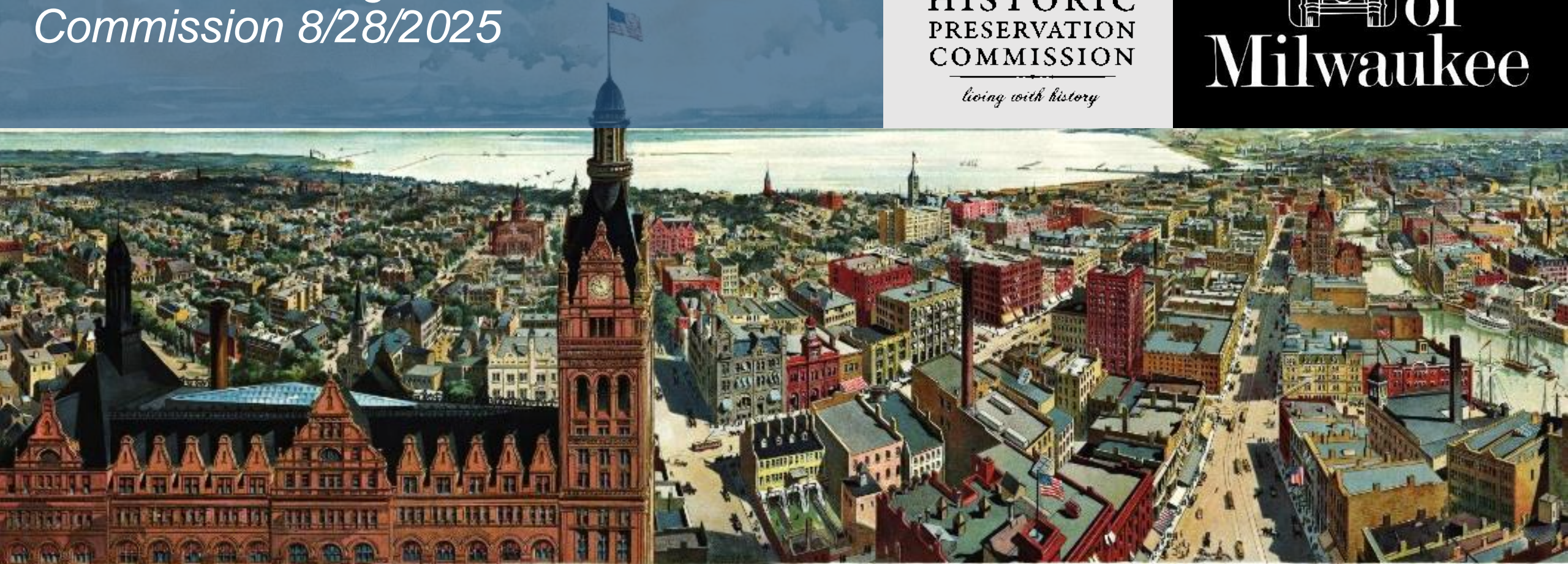


# Demolition Delay

*LaCrosse Heritage Preservation  
Commission 8/28/2025*



RTM  
NORTH DAME CONVENT  
SOMERSET SQUARE MANSION  
TEMPLE PARK  
CITY WATER WORKS  
NORTH BOWNE  
ST. MARY'S CHURCH  
HARBOR OF REFUGE  
STANLEY CO. BUILDING  
ST. JOHN'S CATHEDRAL  
ST. AUGUSTINE BOURGEOIS WARREN  
MADISON TOWER  
U. S. BANK BUILDING  
COUNTY JAIL  
COURT HOUSE  
FIRE HOUSE  
POST OFFICE  
HOTEL DE LOUISE  
HATHAWAY BUREAU  
UNIVERSITY BUILDING  
THE JOURNAL  
COUNTY ATTORNEY  
COURT HOUSE  
ST. CHARLES HOTEL  
EAST WATER ST. BERING NORTH  
ROLLS MILL & SAWYER  
HARRISON  
ST. AUGUSTINE  
MILWAUKEE  
CHAMBER OF COMMERCE  
SUPPORT OF PEOPLE  
HARBOUR ST. BRIDGE  
MILWAUKEE & INDIAN  
CHAMBER OF COMMERCE

PANORAMIC VIEW  
OF MILWAUKEE WIS.



# Milwaukee Landmarks Commission

1964-1981





# Milwaukee Landmarks Commission

*Phase 1: 1964-1967*





# Milwaukee Landmarks Commission

*Phase 2, 1967-1981*







# Historic Preservation Commission

*1982-Present*





# Elizabeth Plankinton Mansion

1886-1980



# Demolition Delay Policy



It is declared a matter of public policy that the protection, enhancement, perpetuation, and use of improvements of special architectural character or special historical interest or value is a public necessity and is required in the interest of health, prosperity, safety, and welfare of the people.

- **Demolition Delay**
  - City Ordinance: 16 days and newspaper publication
  - State Law: 30 days for National Register
  - HPC staff screen all demo permits
- **HPC**
  - Any demolition delay can be extended to 180 days upon public hearing
  - Demolition prohibition can be made permanent



# Demolition Delay Case Study

*Central City Plaza: Pago Liquor and the Masterpiece Motor Lodge*





# Trouble!

## URBAN MILWAUKEE

### Salvation Army Wants To Raze Black Landmark, Will City Allow It?

Salvation Army is contesting decision to protect Black-developed Central City Plaza.

## milwaukee journal sentinel

### Proposed homeless shelter meets objections from historic preservationists

The Salvation Army wants to raze a building to build a homeless center. Preservationists say the building is historic.

BUSINESS

### A Black architect's building could be designated as historic. That might block its demolition

Central City Plaza was designed by Alonzo Robinson, Wisconsin's first Black architect. Its development was led by civil rights leader Felmers Chaney.

LAND AND SPACE



# Milwaukee

## The Historic Central City Plaza Could be Demolished

Wisconsin's first Black-owned, Black-operated and Black-designed shopping center is at risk of being torn down.

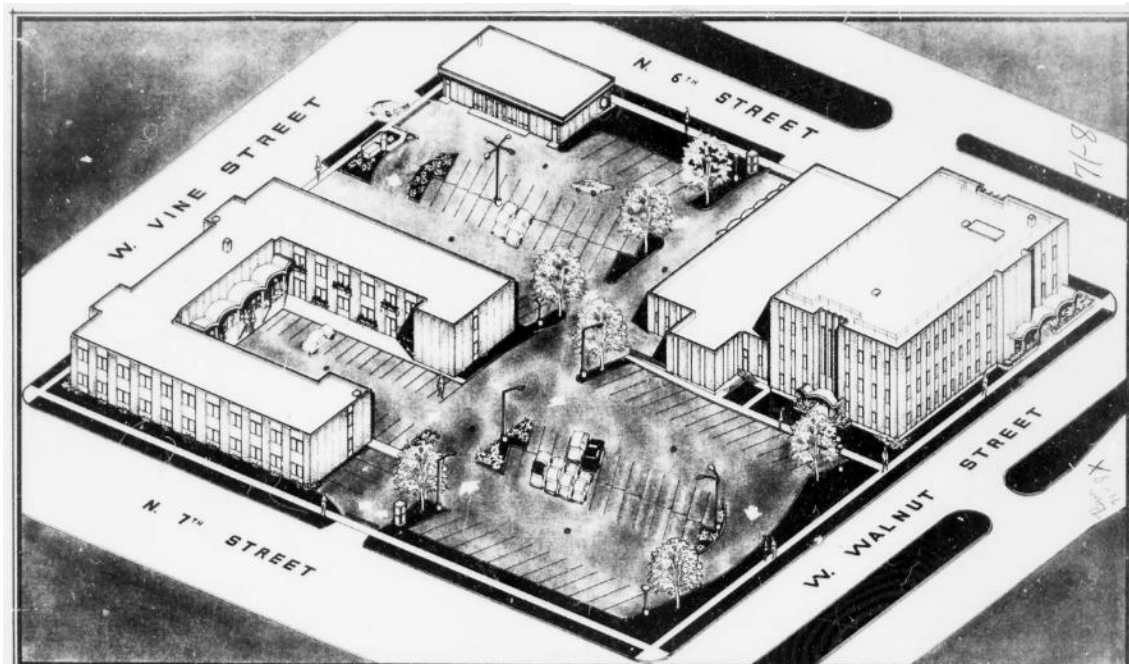




# Black-led Urban Renewal

Roosevelt  
Redevelopment Project

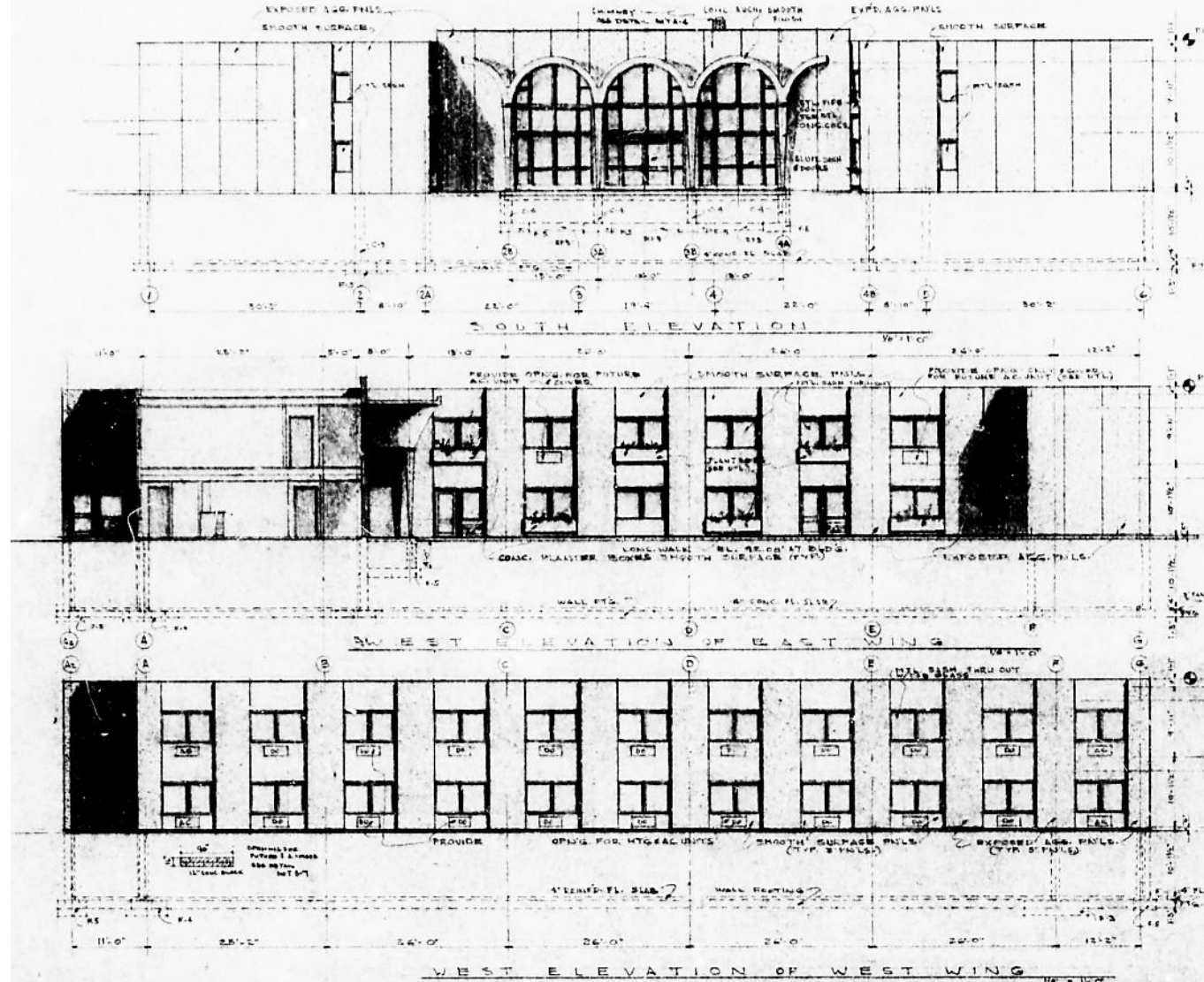
Land Use:  
Community Service  
Semi-Public (Institutional)



CENTRAL CITY DEVELOPMENT CORPORATION  
MILWAUKEE WISCONSIN

DESIGNER  
ARCHITECT  
ENGINEER  
REDAK - ROBINSON - CROSBY

70824





# Alonzo Robinson

*First Black Architect in Wisconsin*



The first Negro licensed by the state as an architect is Alonzo Robinson, 33, of 2457 N. 9th st. Robinson, an architectural designer in the city bureau of bridges and buildings, is a graduate of Howard university, Washington, D. C. —Journal Staff



—Journal Photo

Architect Alonzo Robinson at his drawing board





# Success!



## Salvation Army Now Wants To Save Black Landmark It Planned To Raze

Preservation advocacy results in compromise to save 1970's complex.

**milwaukee journal sentinel**

## Central City Plaza building will be saved after Salvation Army changes plan



**La Risa R. Lynch**

Milwaukee Journal Sentinel

Updated April 16, 2025, 5:34 p.m. CT



**Committee OKs historic status for Black-owned shopping plaza in Milwaukee**





# THANK YOU!

