

**LEGEND**

- |                      |                                     |
|----------------------|-------------------------------------|
| ☼ LIGHT POLE         | ⊗ BURIED GAS                        |
| ⊗ POWER POLE         | ⊗ BURIED TELEPHONE                  |
| — GUY                | — WATERMAIN                         |
| ⊗ ELECTRIC METER     | — FIBER OPTICS                      |
| ⊗ ELECTRICAL BOX     | — EDGE OF BITUMINOUS                |
| ⊗ ELECTRIC OUTLETS   | — VENT PIPE                         |
| ⊗ GAS METER          | ⊗ LIGHT BOLLARD                     |
| ⊗ GAS VALVE          | ⊗ BOLLARD                           |
| ⊗ TELEPHONE PEDESTAL | ⊗ BASKETBALL HOOP                   |
| ⊗ TELEPHONE MANHOLE  | ⊗ FLAG POLE                         |
| ⊗ SANITARY MANHOLE   | ⊗ SIGN                              |
| ⊗ WATER MANHOLE      | ⊗ DECIDUOUS TREE                    |
| ⊗ STORM MANHOLE      | ⊗ CONIFEROUS TREE                   |
| ⊗ UTILITY MANHOLE    | ⊗ BUSH/SHRUB                        |
| ⊗ CATCH BASIN        | ⊗ CONTOUR LINE                      |
| ⊗ CATCH BASIN        | ⊗ PLAY EQUIPMENT                    |
| ⊗ WATER VALVE        | ⊗ VERTICAL PIPE                     |
| ⊗ HYDRANT            | ⊗ BENCH                             |
| ⊗ IRRIGATION BOX     | ⊗ ROCKS                             |
| ⊗ FENCE              | ⊗ CONTROL POINT                     |
| ⊗ SANITARY SEWER     | ⊗ 3/4" IRON BAR FOUND               |
| ⊗ STORM SEWER        | ⊗ 1" IRON PIPE FOUND                |
| ⊗ POWER OVERHEAD     | ⊗ 2" IRON PIPE FOUND                |
| ⊗ BURIED ELECTRIC    | ⊗ COMPUTED PROPERTY CORNER          |
|                      | ⊗ SECTION CORNER PER COUNTY RECORDS |

**UNDERGROUND UTILITIES**

THESE RECORD DRAWINGS HAVE BEEN PREPARED IN PART, ON THE BASIS OF INFORMATION COMPILED AND FURNISHED BY OTHERS. THE SURVEYOR AND ARCHITECT WILL NOT BE HELD RESPONSIBLE FOR ANY ERRORS OR OMISSIONS WHICH HAVE BEEN INCORPORATED INTO THIS DOCUMENT AS A RESULT.

SOME UTILITIES HAVE BEEN LOCATED BY MAPS PROVIDED BY OTHERS-LOCATIONS ARE APPROXIMATE.

FIELD VERIFY SANITARY AND STORM SEWER PIPE SIZES AND THEIR LOCATIONS.

UNDERGROUND UTILITIES SHOWN ON THIS MAP ARE BASED IN PART ON MARKINGS BY DIGGERS HOTLINE. (TICKET #20221102904, 202402201443) AND PRIVATE UTILITY LOCATE PERFORMED BY PRIVATE LINES LLC.

**DESCRIPTION**

THE NORTH 1/2 OF THE NORTHWEST 1/4, SECTION 15, TOWNSHIP 15 NORTH, RANGE 7 WEST, CITY OF LA CROSSE, LA CROSSE COUNTY, WISCONSIN.

**BENCH MARK**

ELEVATIONS BASED ON NAVD 88 USING WISGEOID 12A:

BENCHMARK #1  
TOP NUT ON HYDRANT LOCATED OFF THE SOUTHEAST CORNER OF SOUTH PARKING LOT EAST OF DRIVEWAY FROM HILLVIEW DRIVE

ELEVATION: 677.87

BENCHMARK #2  
NORTHWEST BOLT ON HYDRANT LOCATED OFF THE SOUTH OF HILLVIEW DRIVE NEAR BUILDING 500

ELEVATION: 676.98

BENCHMARK #3  
BURY BOLT ON HYDRANT ON NORTHEAST SIDE OF BUILDING NEAR CP #11

ELEVATION: 676.82

**SURVEY CONTROL POINTS**

COORDINATE SYSTEM BASED ON: NAD83 (2011) WITH LA CROSSE COUNTY COORDINATES USING WISCORS

CP #1 - CP MAG  
N: 120137.64  
E: 457321.04  
Z: 675.25

CP #2 - CP MAG  
N: 120253.63  
E: 457519.63  
Z: 681.68

CP #3 - CP MAG  
N: 120585.31  
E: 457351.31  
Z: 679.85

CP #4 - CP MAG  
N: 120099.20  
E: 457164.34  
Z: 672.40

CP #5 - CP SPIKE  
N: 120394.99  
E: 457522.00  
Z: 676.22

CP #6 - CP SPIKE  
N: 120431.82  
E: 457743.01  
Z: 676.84

CP #7 - CP MAG  
N: 120487.46  
E: 457499.47  
Z: 674.72

CP #8 - CP MAG  
N: 120585.67  
E: 457611.53  
Z: 675.43

CP #9 - CP MAG  
N: 120664.31  
E: 457814.22  
Z: 674.69

CP #10 - CP MAG  
N: 120661.14  
E: 457814.94  
Z: 674.81

CP #11 - CP MAG  
N: 120835.16  
E: 457762.26  
Z: 674.73

CP #12 - CP MAG  
N: 120896.50  
E: 457569.41  
Z: 674.03

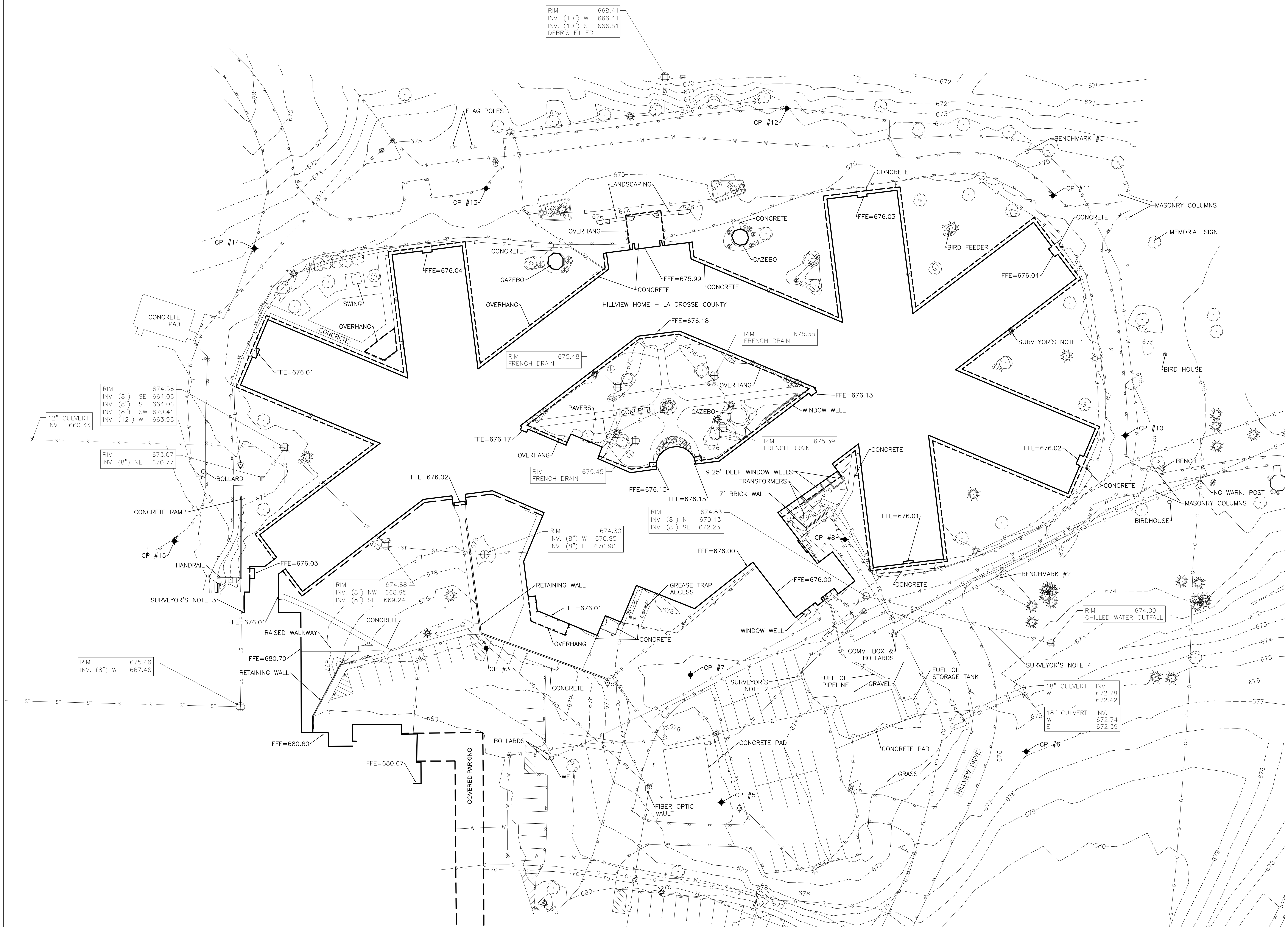
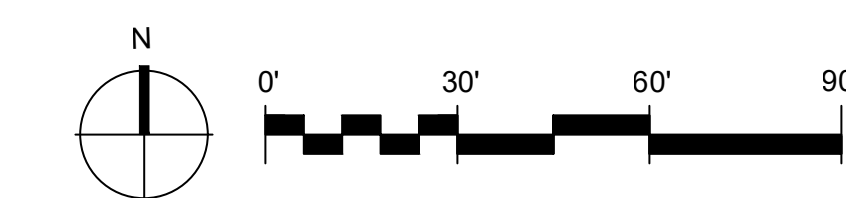
CP #13 - CP MAG  
N: 120840.42  
E: 457351.31  
Z: 674.66

CP #14 - CP MAG  
N: 120796.80  
E: 457183.34  
Z: 647.20

CP #15 - CP MAG  
N: 120594.37  
E: 457126.35  
Z: 671.65

**SURVEYOR'S NOTES**

- IRRIGATION VALVE BOX AND BACKFLOW DEVICE - NO TRACER WIRE PRESENT
- UTILITIES IN THIS AREA BASED ON MAPS PROVIDED BY OTHERS
- ABOVE GROUND STORM PIPE FROM ROOF DRAIN TO INLET
- PIPE ROUTING PROVIDED BY CLIENT.



RIM (10") W 668.41  
INV. (10") W 666.41  
INV. (10") S 666.51  
DEBRIS FILLED

RIM 674.56  
INV. (8") SE 664.06  
INV. (8") S 664.06  
INV. (8") SW 670.41  
INV. (12") W 663.96

RIM 673.07  
INV. (8") NE 670.77

RIM 674.83  
INV. (8") N 670.13  
INV. (8") SE 672.23

RIM 674.80  
INV. (8") W 670.85  
INV. (8") E 670.90

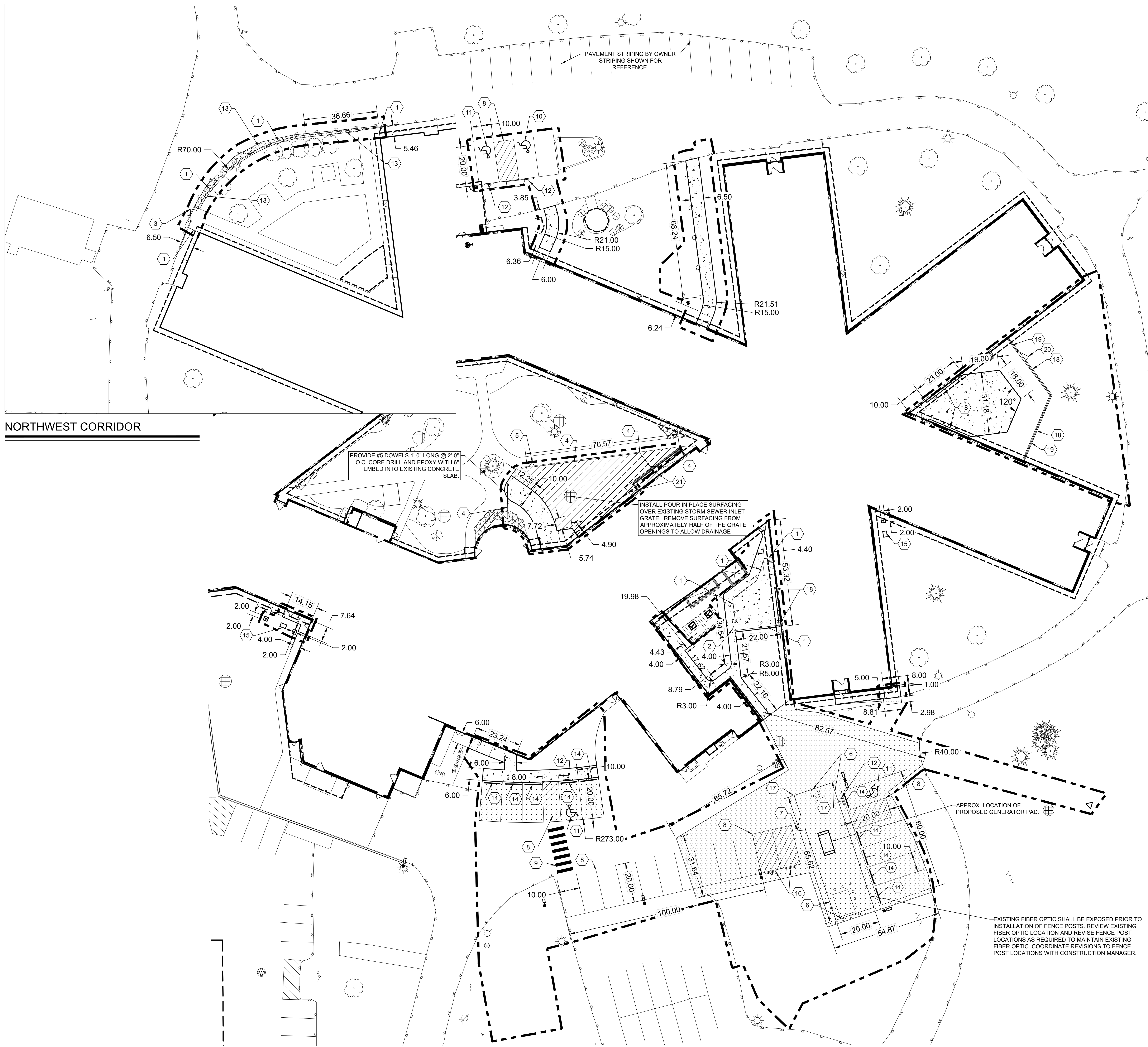
RIM 674.88  
INV. (8") NW 668.95  
INV. (8") SE 669.24

RIM 675.46  
INV. (8") W 667.46

18" CULVERT INV. 672.78  
W 672.42  
E 672.42

18" CULVERT INV. 672.74  
W 672.39  
E 672.39

RIM 674.09  
CHILLED WATER OUTFALL

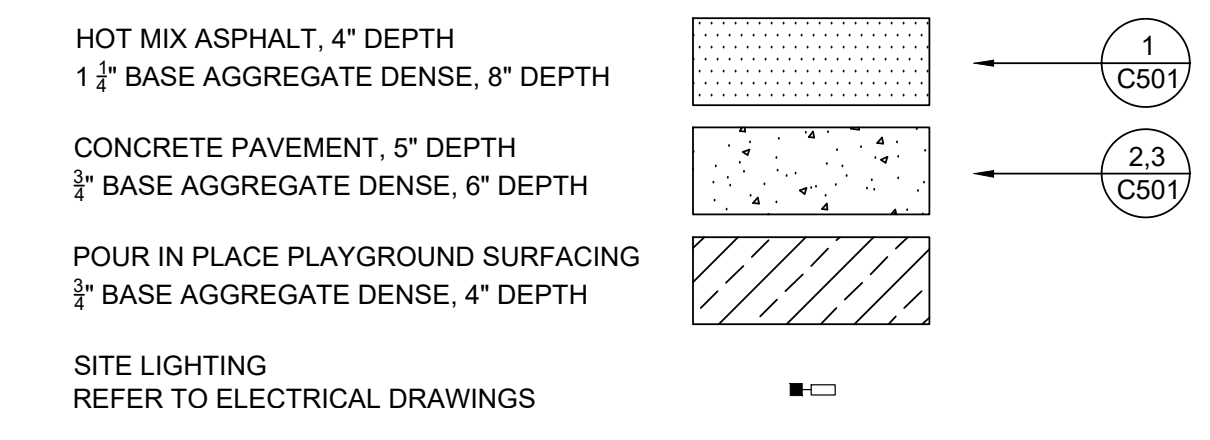


NORTHWEST CORRIDOR

**SITE LAYOUT - GENERAL NOTES**

1. CONTRACTORS SHALL CONTACT DIGGER'S HOTLINE 5 WORKING DAYS PRIOR TO THE START OF CONSTRUCTION.
2. CONTRACTORS SHALL BE RESPONSIBLE FOR LOCATING PRIVATE UTILITIES.
3. ALL PROPOSED DIMENSIONS ARE REFERENCED PARALLEL OR PERPENDICULAR TO THE PROPOSED FEATURES SHOWN.
4. SEED, FERTILIZE, AND GRIMP MULCH ALL GENERAL LANDSCAPE AREAS DISTURBED DURING CONSTRUCTION IN ACCORDANCE WITH THE PROJECT MANUAL SPECIFICATIONS.
5. ALL CONTRACTORS SUBMITTING A BID SHALL VISIT THE SITE AND REVIEW THE EXISTING SITE CONDITIONS PRIOR TO SUBMITTING A BID.

**SITE LAYOUT LEGEND**



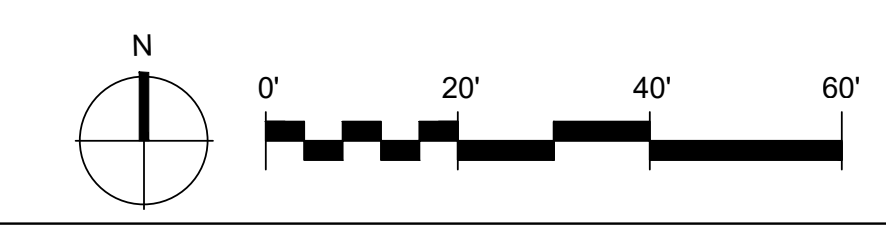
SITE LIGHTING  
REFER TO ELECTRICAL DRAWINGS

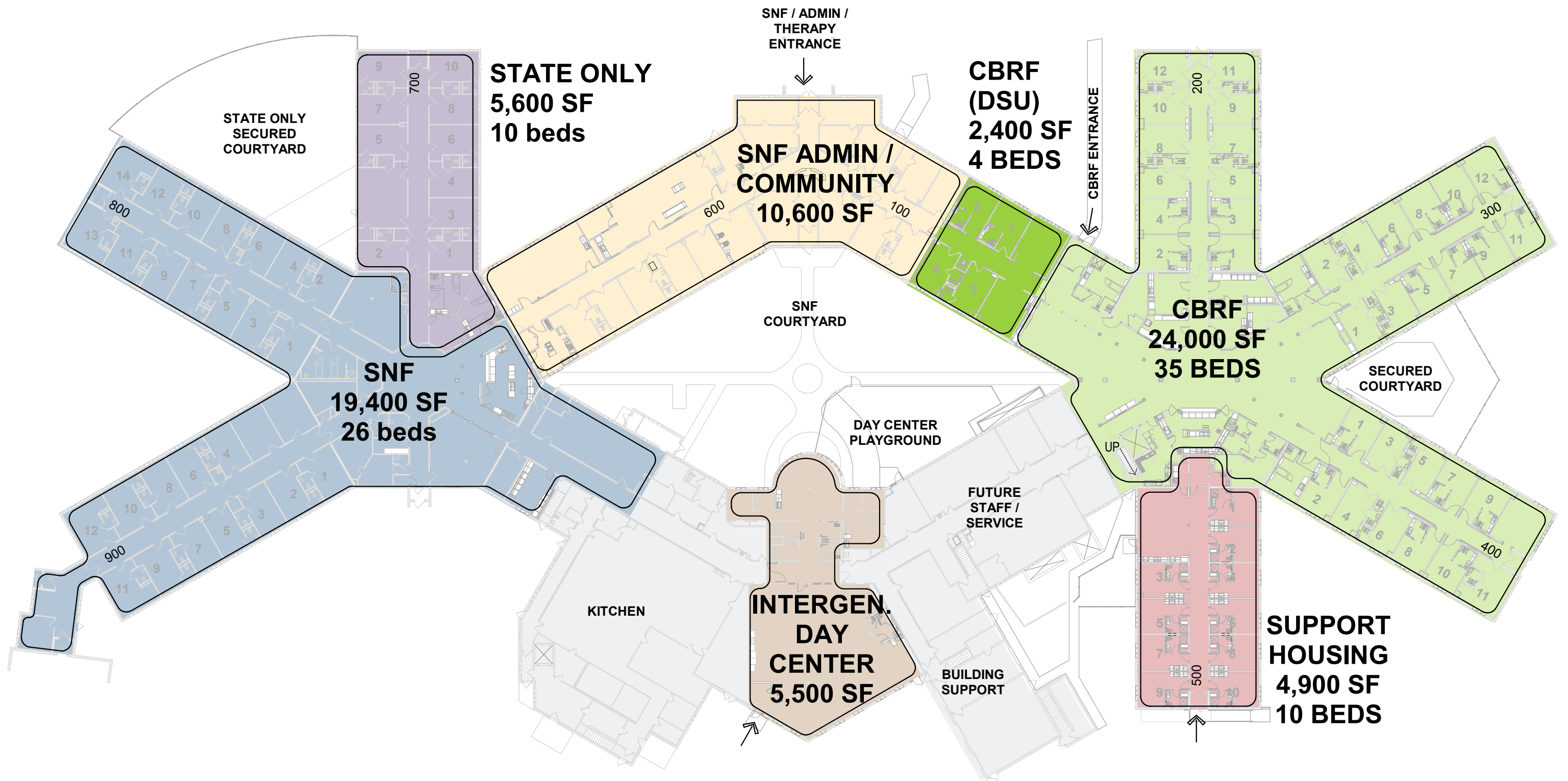
APPROXIMATE PROJECT LIMITS

**SITE LAYOUT KEYNOTES**

- 1' 6" H DECORATIVE SOLID LLDPE FENCE
- 6' H X 4' W DECORATIVE SOLID LLDPE FENCE GATE
- 6' H X 6' W DECORATIVE SOLID LLDPE FENCE GATE - LOCKABLE
- 4' H BLACK VINYL CHAIN LINK FENCE
- CUSTOM METAL GATE - REFER TO ARCH. DRAWINGS
- 6' H BLACK VINYL FENCE WITH PRIVACY SLATTING
- 6' H X 8' W BLACK VINYL FENCE GATE WITH PRIVACY SLATTING
- PAVEMENT MARKINGS - WHITE
- CROSSWALK
- STANDARD ADA STALL
- VAN ACCESSIBLE ADA STALL
- ADA PARKING SIGN
- LIMESTONE SCREENINGS MAINTENANCE STRIP. 1' OFFSET FROM EACH SIDE OF FENCE. FILL IN ADDITIONAL SPACE BETWEEN FENCE AND ADJACENT ASPHALT WHERE APPLICABLE.
- CONCRETE PARKING STOPS
- APPROX. LOCATION OF PROPOSED GREASE INTERCEPTORS AND CLEANOUTS - REFER TO MEP PLANS
- 12'X18' MAINTENANCE VEHICLE PARKING ONLY SIGN
- 6' STEEL BOLLARD
- 1' W LIMESTONE SCREENINGS MAINTENANCE STRIP
- 6' H DECORATIVE STEEL FENCE
- 6' H X 6' W DECORATIVE METAL FENCE GATE - LOCKABLE
- 5' H BLACK VINYL CHAIN LINK FENCE

MARK	DATE
ISSUED:	07/02/2024
PROJECT NO:	23470
DRAWN BY:	T. SCHMENK
CHECKED BY:	C. RETTLER





# CONCEPT FLOOR PLAN





# Hillview Health Center Remodel



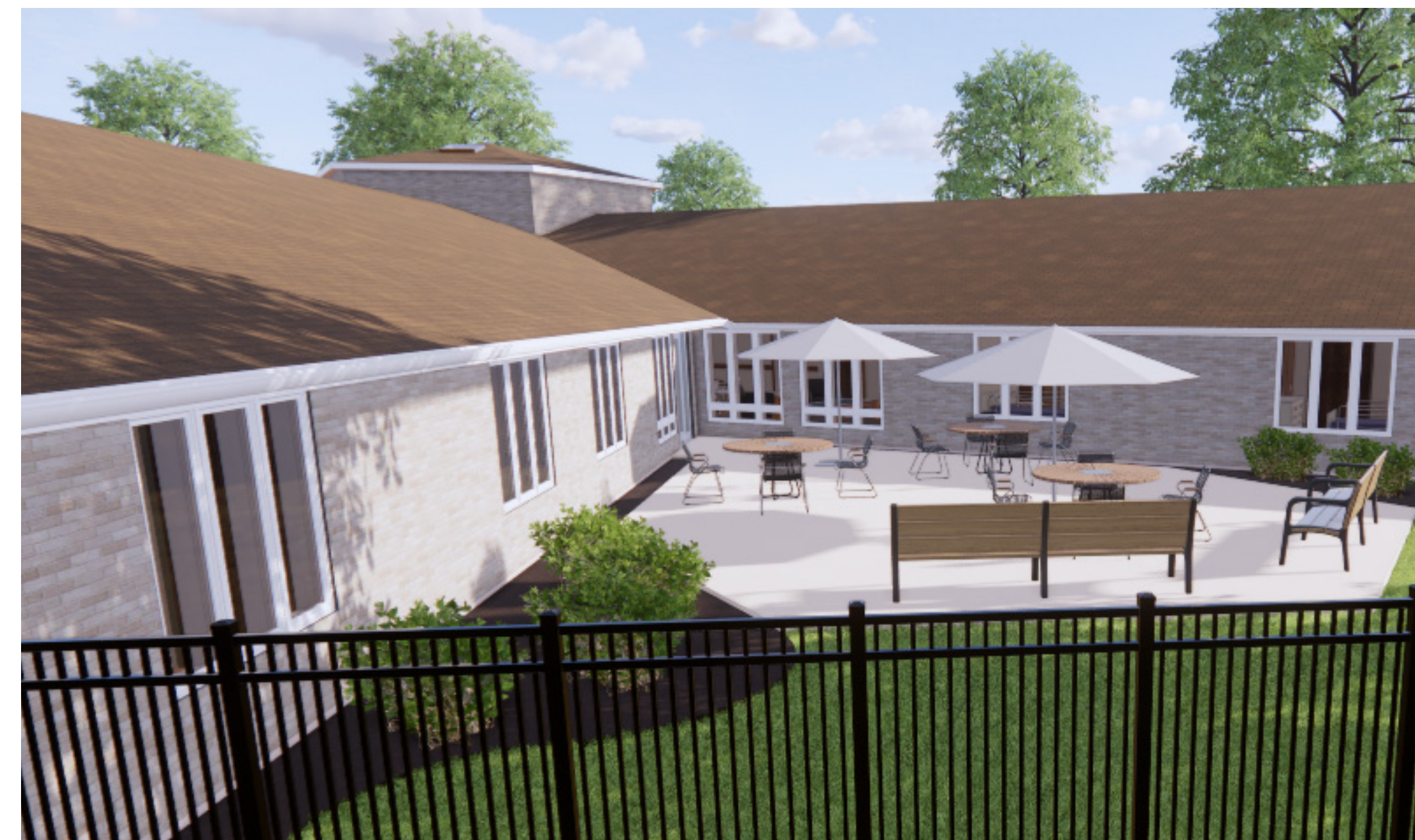
CBRF Resident Unit



CBRF Kitchen



CBRF Lounge



CBRF Patio



Day Center Playground