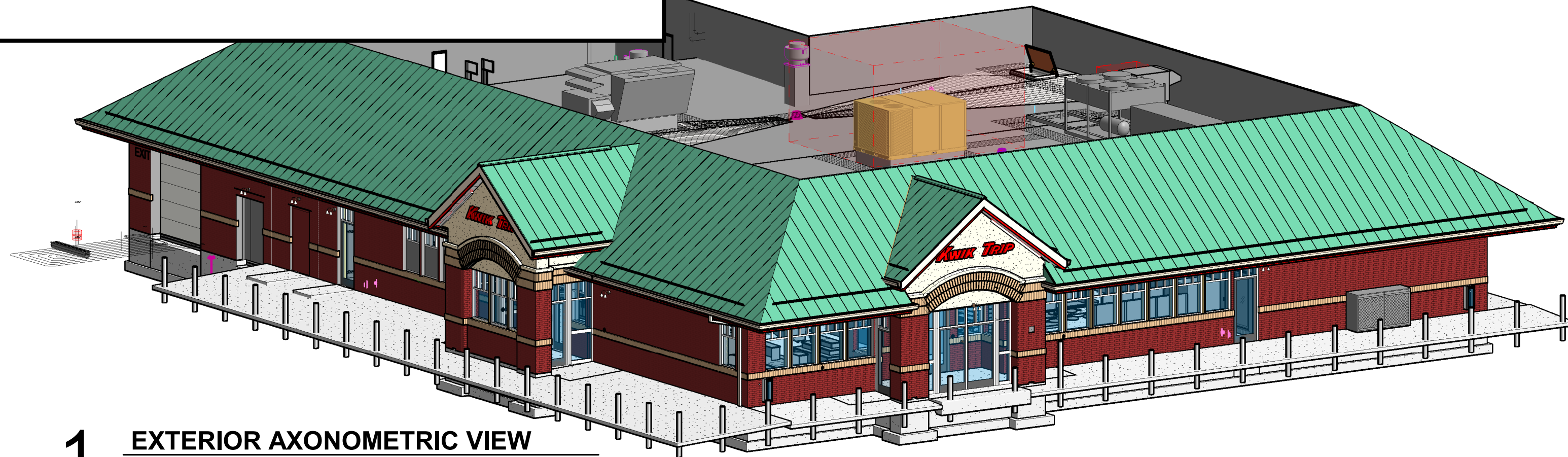


Kwik Trip, Inc.

Store #2024-G3-WI-LH-1CW-SV

Wisconsin

Store#762
La Crosse, WI



1 EXTERIOR AXONOMETRIC VIEW

2024 BID PACKAGE
 - THESE DRAWINGS ARE FOR
 BID PURPOSE ONLY
NOT FOR CONSTRUCTION

<p>General</p> <p>Vantage Architects, Inc. 750 N. Third Street, Suite F La Crosse, WI 54601 P: (608) 784-2729</p>	<p>Civil</p> <p>Insites 3131 Fernbrook Lane North, STE 260 Plymouth, MN 55447 P: (763) 383-8400</p>	<p>Piping</p> <p>Heideman Consulting P.O. Box 260124 Madison, WI 53726 P: (608) 445-5650</p>	<p>Structural</p> <p>Fink Horejsh, LLC. N9494 State Road 69 New Glarus, WI 53574 P: (608) 658-1257</p>	<p>Architectural</p> <p>Vantage Architects, Inc. 750 N. Third Street, Suite F La Crosse, WI 54601 P: (608) 784-2729</p>	<p>Plumbing</p> <p>JDR Engineering, Inc. 5525 Nobel Drive, Suite 110 Madison, WI 53711 P: (608) 277-1728</p>	<p>HVAC & Refrigeration</p> <p>JDR Engineering, Inc. 5525 Nobel Drive, Suite 110 Madison, WI 53711 P: (608) 277-1728</p>	<p>Electrical</p> <p>JDR Engineering, Inc. 5525 Nobel Drive, Suite 110 Madison, WI 53711 P: (608) 277-1728</p>
<p>G000 Cover Sheet G101 Life Safety Plan/ Code Compliance</p>	<p>T1 Title Sheet 1 of 3 Survey 2 of 3 Survey 3 of 3 Survey SP0 Site Circulation Plan SP1 Site Dimension Plan SP1.1 Site Keynote Plan SP2 Grade Plan SP2.1 Grade Plan Detail SP3 Storm Sewer Plan SP3.1 Storm Sewer Notes & Details SP4 Utility Plan SP4.1 Utility Notes and Details SP5 Site Plan Details SP6 Site Plan Details (WI DOT) SP7 Site Plan Details (WI DOT) SWP1 Erosion Control Plan SWP2 Erosion Control Notes SWP3 Erosion Control Notes SWP4 Erosion Control Details L1 Landscape Plan IR1 Irrigation Plan E1 Photometric Site Plan P1 Curtis St. Reconstruction Plan & Profile P2 Curtis St. Paving & Striping Plan</p>	<p>F000 Title Page F100 Fuel System Site Plan F101 UST & Piping Plan F102 Forecourt Plan F201 Unleaded 88/E15 Tank Plan F202 Regular Unleaded Tank Plan F203 Premium Unleaded Tank Plan F204 Auto Diesel Tank Plan F205 #2 Diesel Tank Plan F206 Premium Diesel Tank Plan F207 Diesel Exhaust Fluid Tank Plan F208 N87 Tank Plan F211 UST Anchor & Slab Plan - Auto F212 UST Burial Plan - Auto F213 UST Anchor & Slab Plan - HSD F301 STP Sump Sections - Plan View F302 STP Sump Sections F303 Fill & Vent Sections F304 DEF Recirculation Plan Detail F401 Dispenser Details NA3+Diesel F402 Dispenser Details NA3+N87 F404 Dispenser Details NP8 Master F406 Dispenser Details NP8 Satellite F407 Dispenser Details - NA2 Rec. F501 Vent Riser Details F601 Fueling System Equipment Sch. F602 Fueling System Equipment Sch. F603 Fueling System Equipment Sch.</p>	<p>S100A Foundation Plan - Segment A S100B Foundation Plan - Segment B S100C Foundation Plan - Segment C S101 Enlarged Vestibule Foundation Plan S102 Enlarged Side Vestibule Plan S105 Store Foundation Plan Details S106 Carwash Foundation Plan Details S110A Slab Plan - Segment A S110B Slab Plan - Segment B S110C Slab Plan - Segment C S111 Enlarged Side Vestibule Slab Plan S115 Slab Details S140 Roof Framing Overall Plan S141A Roof Framing Plan - Segment A S141B Roof Framing Plan - Segment B S142 Car Wash Roof Framing Plan & Details S143 Draft Stop Plan S143A Draft Stop Wall Sections & Details S144 Roof Curb & Refrigeration Rack Location S145 Roof Framing Details S146 Enlarged Side Vestibule Roof Framing Plan S400 Framing Elevations S401 Framing Elevations STB1 Bracing Plan STB2 Truss Elevation</p>	<p>A000 Overall Floor Plan & Thermal Envelope Insulation Values & Notes A001 Wall Types A110A Framing Floor Plan - Segment A A110B Framing Floor Plan - Segment B A110C Framing Floor Plan - Segment C A120A Equipment Floor Plan - Segment 'A' A120B Equipment Floor Plan - Segment 'B' A120C Equipment Floor Plan - Segment 'C' A125 Car Wash Elevation A130 Reflected Ceiling Plan - Overall A131 Reflected Ceiling Plan - Seg A A132 Reflected Ceiling Plan - Seg B A133 Ceiling Finish Plan, Lighting Plan, TV Plan & Color Schedule - Seg A A134 Ceiling Finish Plan, Lighting Plan, TV Plan & Color Schedule - Seg B A135 Ceiling Details A140 Roof Plan A145 Roof Plan Details A200 Exterior Elevations A300 Building Sections A301 Building Sections A302 Building Sections - Car Wash A310 Wall Sections - Store A311 Wall Sections - Store A313 Wall Sections - Vestibule A314 Wall Sections - Car Wash A315 Wall Section - Car Wash & Rear Gable A316 Wall Section Side Vestibule A317 Wall Sections - Side Vestibule A317A Wall Sections - Side Vestibule A320 Framing Details A321 Stair Plans & Details A400 Enlarged Toilet Room Plans A401 Enlarged Vestibule Plan A402 Enlarged Side Vestibule Plan A405 Rough Opening Schedule & Details A410 Interior Elevations - Toilet Rooms A411 Interior Elevations - Store Sales & Coffee A412 Interior Elevations - Store Sales, Coffee & CBT A413 Interior Elevations - Kitchen A414 Interior Elevations - Storage Room & IT Closet A415 Interior Elevations - Carwash Extrutech Panel Layout A420 Casework Details A421 Casework Details A423 Casework Details & Cooler Details A500 Door Schedule, Frame Elev., Details A510 Door Details A511 Door & Window Details A512 Flashing Details A600 Room Finish Schedule A610 Floor & Wall Finish Plan A620 Finish Details A700 Canopy Plan A701 Diesel Plan</p>	<p>P000 Symbols, Abbreviations & Notes - Plumbing P100A Underfloor Plan - Segment A - Plumbing P100B Underfloor Plan - Segment B - Plumbing P200A Floor Plan - Segment A - Plumbing P200B Floor Plan - Segment B - Plumbing P240 Underfloor Plan Carwash - Plumbing P241 Floor Plan Carwash - Plumbing P300 Domestic Water Isometric - Plumbing P301 Waste & Vent Isometric - Plumbing P302 Waste & Vent Isometrics - Plumbing P303 Storm Isometric - Plumbing P304 Carwash Waste & Vent Isometric - Plumbing P305 Carwash Domestic Water Isometric - Plumbing P306 Carwash Storm Isometric - Plumbing P400 Elevations - Plumbing P401 Carwash Section - Plumbing P402 Carwash Section - Plumbing P800 Details - Plumbing P801 Details - Plumbing P802 Details - Plumbing P803 Details - Plumbing P900 Schedules - Plumbing P901 Schedules - Plumbing</p>	<p>H000 Symbols and Abbreviations - HVAC H200A Floor Plan - Segment A - Ductwork - HVAC H200B Floor Plan - Segment B - Ductwork - HVAC H210A Floor Plan - Segment A - Piping - HVAC H210B Floor Plan - Segment B - Piping - HVAC H230 Roof Plan - HVAC H240 Carwash Plan - HVAC H300 Schematics - HVAC H800 Details - HVAC H801 Details - HVAC H802 Details Exhaust Hood (H-1) H803 Details Exhaust Hood (H-1) H804 Details Exhaust Hood (H-1) H805 Details Exhaust Hood (H-1) H806 Details Exhaust Hood (H-1) H900 Schedules - HVAC H901 Schedules - HVAC R200A Floor Plan Segment A - Refrigeration R200B Floor Plan Segment B - Refrigeration R800 Details Refrigeration R900 Schedules - Refrigeration TC000 Symbols & Abbreviations - Temperature Controls TC001 Details - Temperature Controls TC200A Floor Plan Temperature Controls TC200B Floor Plan Temperature Controls TC300 RTU-1 & ERV-1 Control Diagrams TC301 RTU-2 Control Diagrams TC302 Store Hot Water System Control Diagram TC303 Hot Water Terminal Unit Control Diagrams TC304 Kitchen Ventilation & Fan Control Diagrams TC305 Car Wash Control Diagrams TC900 Schedules Temperature Controls TC901 Schedules Temperature Controls</p>	<p>E000 Electrical Title Sheet E001 General Notes E002 Electrical Site Plan E100 Electrical Site Underground E110A Electrical Power Conduits - Segment A E110B Electrical Power Conduits - Segment B E120A Electrical Systems & Raceway Conduits - Segment A E120B Electrical Systems & Raceway Conduits - Segment B E140 Electrical Carwash Conduits - Dimensions E141 Electrical Carwash Conduits E200A Electrical Lighting Floor Plan - Segment A E200B Electrical Lighting Floor Plan - Segment B E210A Electrical Power Floor Plan - Segment A E210B Electrical Power Floor Plan - Segment B E220A Electrical System Floor Plan - Segment A E220B Electrical System Floor Plan - Segment B E230 Electrical Roof Plan E240 Electrical Carwash Lighting Floor Plan E241 Electrical Carwash Power Floor Plan E242 Electrical Carwash Systems Floor Plan E243 Electrical Carwash Equipment Floor Plan E245 Electrical Caewash Details E300 Electrical Lighting Wiring Diagrams E310 Electrical Power Wiring Diagrams E320 Electrical Systems Wiring Diagrams E321 Electrical Security Details E322 Electrical Security Details E340 Electrical Carwash Wiring Diagrams E341 Electrical Carwash Diagrams E400 Electrical Elevations & Sections E401 Kitchen Ventilation & Fan Control Diagrams E402 Car Wash Control Diagrams E403 Schedules Temperature Controls E404 Schedules Temperature Controls E405 Electrical Elevations & Sections E406 Electrical Elevations & Sections E407 Electrical Elevations & Sections E441 Electrical Elevations & Sections E442 Electrical Elevations & Sections E443 Electrical Elevations & Sections E444 Electrical Elevations & Sections E445 Electrical Elevations & Sections E500 Electrical Conduit Schedules - Building E501 Electrical Conduit Schedules - Building E502 Electrical Conduit Schedules - Building E540 Electrical Conduit Schedules - Carwash E541 Electrical Conduit Schedules - Carwash E560 Electrical Conduit Schedules - Site E600 Electrical Power One-Line Diagram E601 Electrical Power Panel Schedules E602 Electrical Power Panel Schedules E603 Electrical Power Panel Schedules E610 Electrical Panel Wall Detail E630 Electrical Equipment Schedules E631 Electrical Equipment Schedules E640 Electrical Power Panel Schedules E641 Electrical Carwash Panel Wall Detail E690 Electrical Schedules - Lighting & Control E800 Electrical Lighting Details E810 Electrical Power Details E811 Electrical Power Details EF150 Electrical Fueling Area Conduits EF151 Electrical Fueling Area Details EF250 Electrical Fueling Area Plan EF251 Electrical Power Details For EF Contractor EF252 Fuel Equipment Schedule EF350 Electrical Fueling Area Wiring Diagrams EF351 Electrical Fueling Area Wiring Diagrams EF550 Electrical Conduit Schedules - Fuel EF551 Electrical Conduit Schedules - Fuel EF552 Electrical Conduit Schedules - Fuel</p>

VANTAGE ARCHITECTS, INC.

750 N. Third Street
Ph (608) 784-2729

La Crosse, WI 54601
Fax (608) 784-2826

KWIK TRIP, Inc.
P.O. BOX 2107
1626 OAK STREET
LA CROSSE, WI 54602-2107
PH. (608) 781-8988
FAX (608) 781-8960

PROJECT TITLE:
Store #2024-G3-WI-LH-1CW-SV

PROJECT LOCATION:
Kwik Trip, Inc.
Wisconsin (Store#762)

JOB #: 1081

DATE: 10.02.2023

DRAWN BY: Author

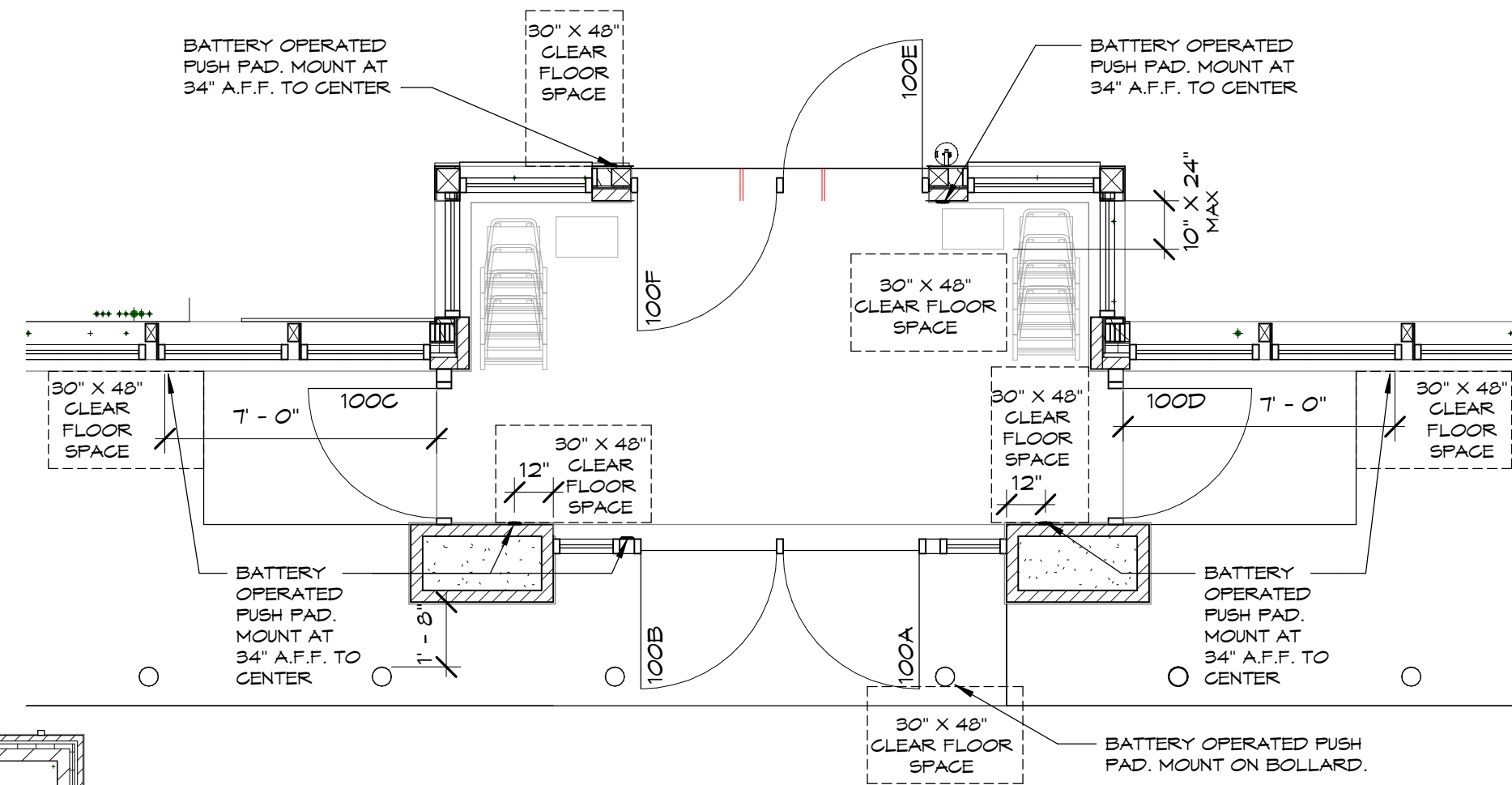
TYPE: Bid Set

REVISIONS

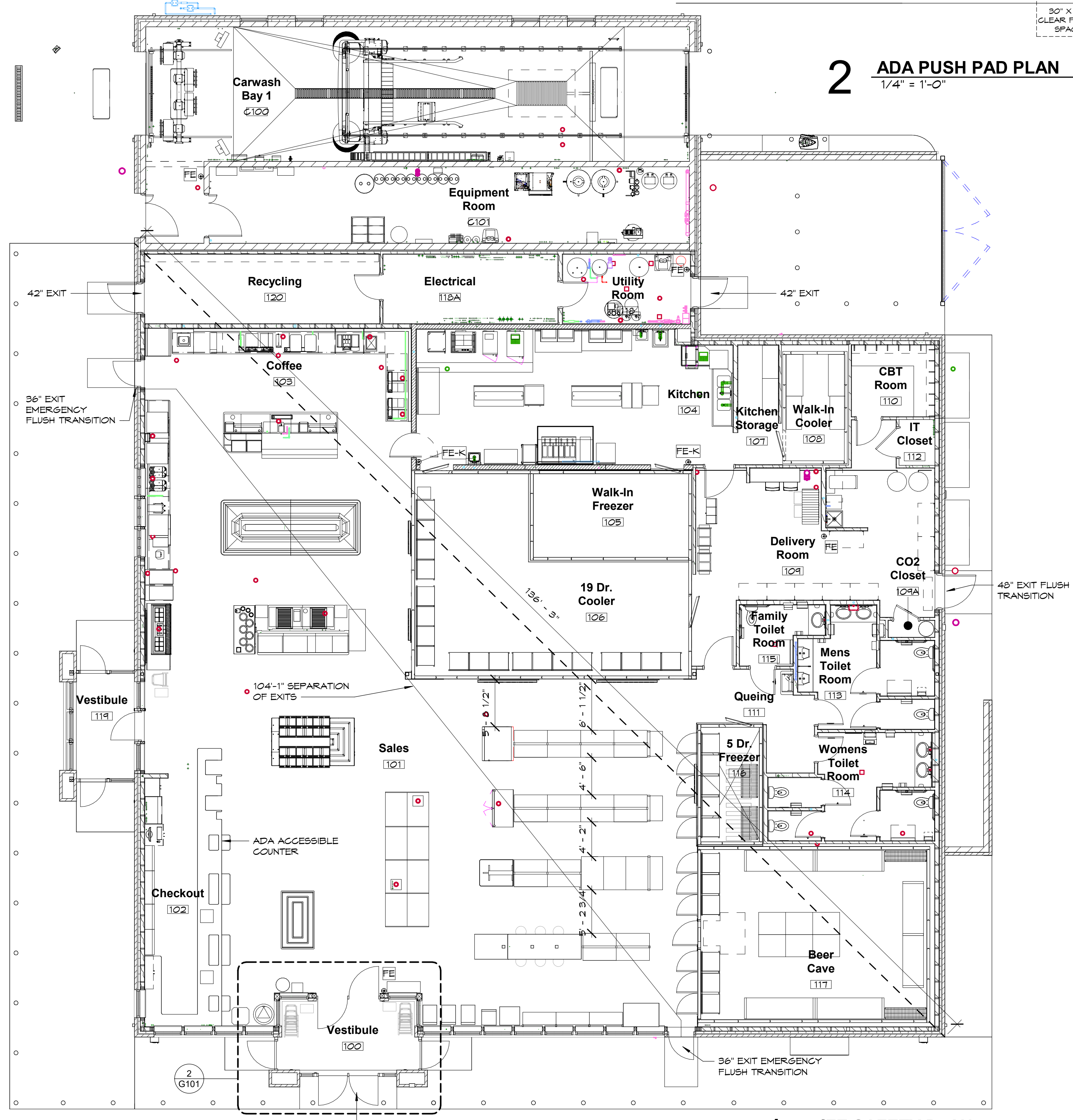
NO.	DATE	DESCRIPTION

SHEET TITLE
Cover Sheet

SHEET NO.
G000



2 ADA PUSH PAD PLAN
1/4" = 1'-0"



1 LIFE SAFETY PLAN
1/8" = 1'-0"

BUILDING CODE SUMMARY WI

Applicable Codes:	2015 Wisconsin State Building Code (2015 IBC w/ Amendments) 2015 International Mechanical Code (w/ WI Amendments) 2015 International Energy Conservation Code (w WI Amendments) 2015 International Fuel Gas Code (w/ WI Amendments) SPS381-387 WI Plumbing Code - Safety & Professional Services 2017 National Electrical Code 2015 NFPA 101 Life Safety Code 2015 International Fire Code 2009 ANSI 117.1 Accessibility Code - (IBC CHP 11)																																			
Description of Work:	New Building																																			
Building Occupancy:	Classification: Store: Mercantile Group M Car Wash: Business Group B																																			
Building Areas:	11,033 sq. ft. (9,000 sq. ft. allowable)																																			
Number of Stories:	One (one allowable)																																			
Type of Construction:	Store: Type 5B: Non-Sprinklered Car Wash: Type 5B: Non - Sprinklered																																			
Sprinkler Requirements:	Per 903.2.7 An automatic sprinkler system is not required for Group M fire areas less than 12,000 sq. ft.																																			
Fire Alarm:	Per 907.2.7 Group M- Manual fire alarm boxes are not required in a Group M occupancy having an occupant load less than 500 persons																																			
Area Modifications:	506.3 Frontage Increase (318/426-25) 30/30 = 0.50 x 9,000 sq. ft. = 4,500 sq. ft. additional per floor																																			
Building Separations, Fire Partitions: Rated Areas	Table 508.4 - no seperation is required between occupancy groups B & M.																																			
Fire Resistive Rating For Exterior Walls:	Table 602 Type V-B Construction, greater than 10 feet = 0 Rating																																			
Attic Separation:	Per 718.4.3 Draft stopping shall be installed in attics such that any horizontal area does not exceed 3,000 sq. ft. provide access to each separated area.																																			
Occupant Load:	Per Table 1004.1.2 Space Mercantile Grade Floor @ 30 sq. ft. Stock Area @ 300 sq. ft. 5,500 sq. ft./30 sq. ft. = 183 persons 3,610 sq. ft./300 sq. ft. = 12 persons Total occupant load = 195 persons																																			
Exit Requirements:	Table: 1005.3.2 "Required Exit Width" Based on occupant load - 195 x 0.2 = 39" Section: 1006 Egress based on occupant load and common path of egress travel distance. Section: 1006.2.1 Two exits required where more than 30 person occupant load and less than 500 persons Tables: 1006.2.1 & 1006.3.1 Common path: Common path of egress travel shall not exceed 75ft. Section: 1007 Exit & Exit Access Doorway Configuration 1007.1.1 Two exits shall be located a min. of 1/2 the diagonal distance of the building Section: 1017 Exit Access Travel Distance Table: 1017.2 Travel distance: 200 ft. Non-sprinklered Section: 1018 Aisles 1018.3 Min. aisle width per section 1005.3.2 = 195 Occupant x .2 = 39 inches required. Section: 1020 Corridors 1020.2 Corridor Width & Capacity Table: 1020.2 Minimum corridor width = 44" 1020.4 Dead end corridors shall not exceed 20'. There are no dead end corridors on this project.																																			
ADA Accessibility:	- The project will provide access to all areas of the facility. All spaces in the project will comply with ADA requirements. - The Restrooms have toilet compartments with toe clearance on two sides since the interior partitions continue to the floor. ANSI 117.1 Exception 1 & 2 - Min size for floor mounted toilets 65" deep x 66" wide min.																																			
Sanitary Fixtures:	Per Table 2902.1																																			
	<table border="1"> <thead> <tr> <th>Area</th> <th>U or WC (M)</th> <th>WC(F)</th> <th>Lav</th> <th>Showers</th> <th>D.F.</th> <th>Other</th> </tr> </thead> <tbody> <tr> <td>Mercantile</td> <td>.14</td> <td>.14</td> <td>.19</td> <td>---</td> <td>.14</td> <td>1 service sink</td> </tr> <tr> <td>Business</td> <td>.9</td> <td>.9</td> <td>1.1</td> <td>---</td> <td>.4</td> <td>1 service sink</td> </tr> <tr> <td>Required</td> <td>2</td> <td>2</td> <td>2</td> <td>---</td> <td>2</td> <td>1 service sink</td> </tr> <tr> <td>Provided</td> <td>4</td> <td>4</td> <td>4</td> <td>---</td> <td>See note below</td> <td>1 service sink</td> </tr> </tbody> </table>	Area	U or WC (M)	WC(F)	Lav	Showers	D.F.	Other	Mercantile	.14	.14	.19	---	.14	1 service sink	Business	.9	.9	1.1	---	.4	1 service sink	Required	2	2	2	---	2	1 service sink	Provided	4	4	4	---	See note below	1 service sink
Area	U or WC (M)	WC(F)	Lav	Showers	D.F.	Other																														
Mercantile	.14	.14	.19	---	.14	1 service sink																														
Business	.9	.9	1.1	---	.4	1 service sink																														
Required	2	2	2	---	2	1 service sink																														
Provided	4	4	4	---	See note below	1 service sink																														
Drinking Fountain Note:	Kwik Trip provides free cups of water from soda machine to all who enter.																																			
Fire Extinguishers:	906 per NFPA 10 Required Areas 906.1 - Required in groups B & M 906.1.2 - Required within 30 feet distance of travel from commerical cooking equipment. Fire Hazard Classifications 906.3.1 Class A Fire Hazards - Maximum distance of travel to extinguisher 75ft. - See floor plans for designated locations 906.4 Cooking Grease fires 904.12.5 International Fire Code - Portable Fire Extinguishers for Commerical Cooking Equipment 904.12.5.2 Class K portable fire extinguisher to be included in hazard areas that contain deep fat fryers. See floor plan for location of all fire extinguishers (FE & FEK)																																			
Foam Plastic Insulation:	2603.9 Special Approval - Cooler and freezer panels have passes UL1715 and conform to IBC 2603.9 for foam plastic insulation. See attached product data and Wisconsin Building Products Evaluation # 201305-I																																			
Exhaust Hood:	SPS 364.0507 Commerical Kitchen Hoods 507.2 Type I Hood - Type I hood shall be installed where cooking appliances produce grease 507.3 Type II Hood - Type II hood shall be installed where cooking or dishwashing appliances produce heat, steam, or products of combustion and do not produce grease or smoke. See floor plan for locations of both type I & II hoods																																			



KWIK TRIP, Inc.
P.O. BOX 2107
1626 OAK STREET
LA CROSSE, WI 54602-2107
PH. (608) 781-8988
FAX (608) 781-8960

PROJECT TITLE:
Store #2024-G3-WI-LH-1CW-SV
Kwik Trip, Inc.
PROJECT LOCATION:
Wisconsin (Store#747)

JOB #:	1081
DATE:	10.02.2023
DRAWN BY:	Author
TYPE:	Bid Set
REVISIONS	
NO.	DATE

SHEET TITLE
Life Safety Plan/ Code Compliance
SHEET NO.
G101