

ISSUED  
2024-03-29 - ISSUED FOR BID

NOT FOR CONSTRUCTION

PROJECT TITLE  
**River Point District  
- K1**

Riverside North La  
Crosse, Wisconsin  
SHEET TITLE  
**First Floor Plan**

SHEET NUMBER  
**A101**

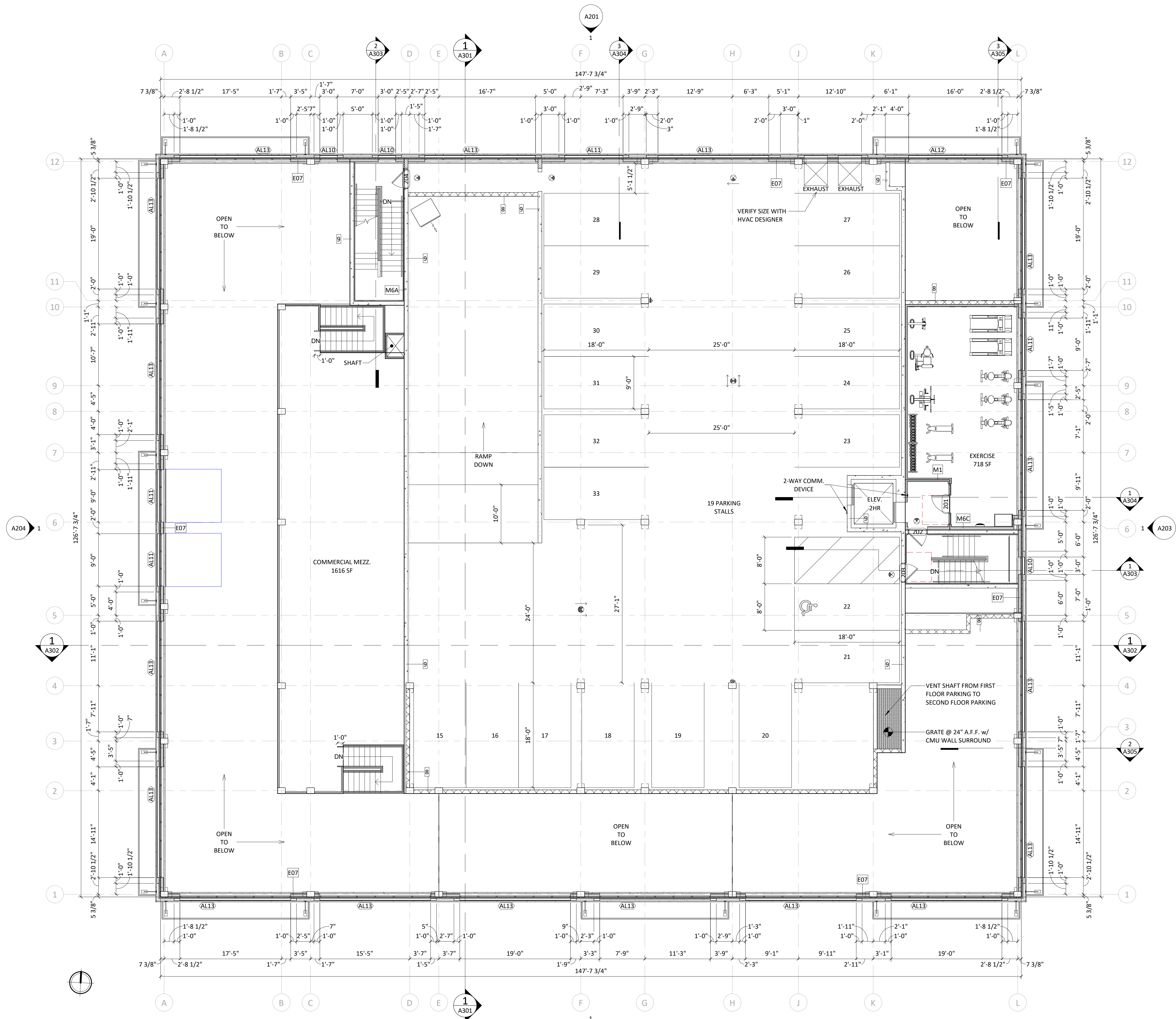
PROJECT NUMBER  
**2151**

1/8 - 01 - FIRST FLOOR  
1/8" = 1'-0"



knothe • bruce  
ARCHITECTS

Phone: 8401 Greenway Blvd, Suite 900  
608.836.3690 Middleton, WI 53562



ISSUED  
2024-03-29 - ISSUED FOR BID

NOT FOR CONSTRUCTION

PROJECT TITLE  
River Point District  
- K1

Riverside North La  
Crosse, Wisconsin  
SHEET TITLE  
Second Floor Plan

SHEET NUMBER

A102

PROJECT NUMBER

2151

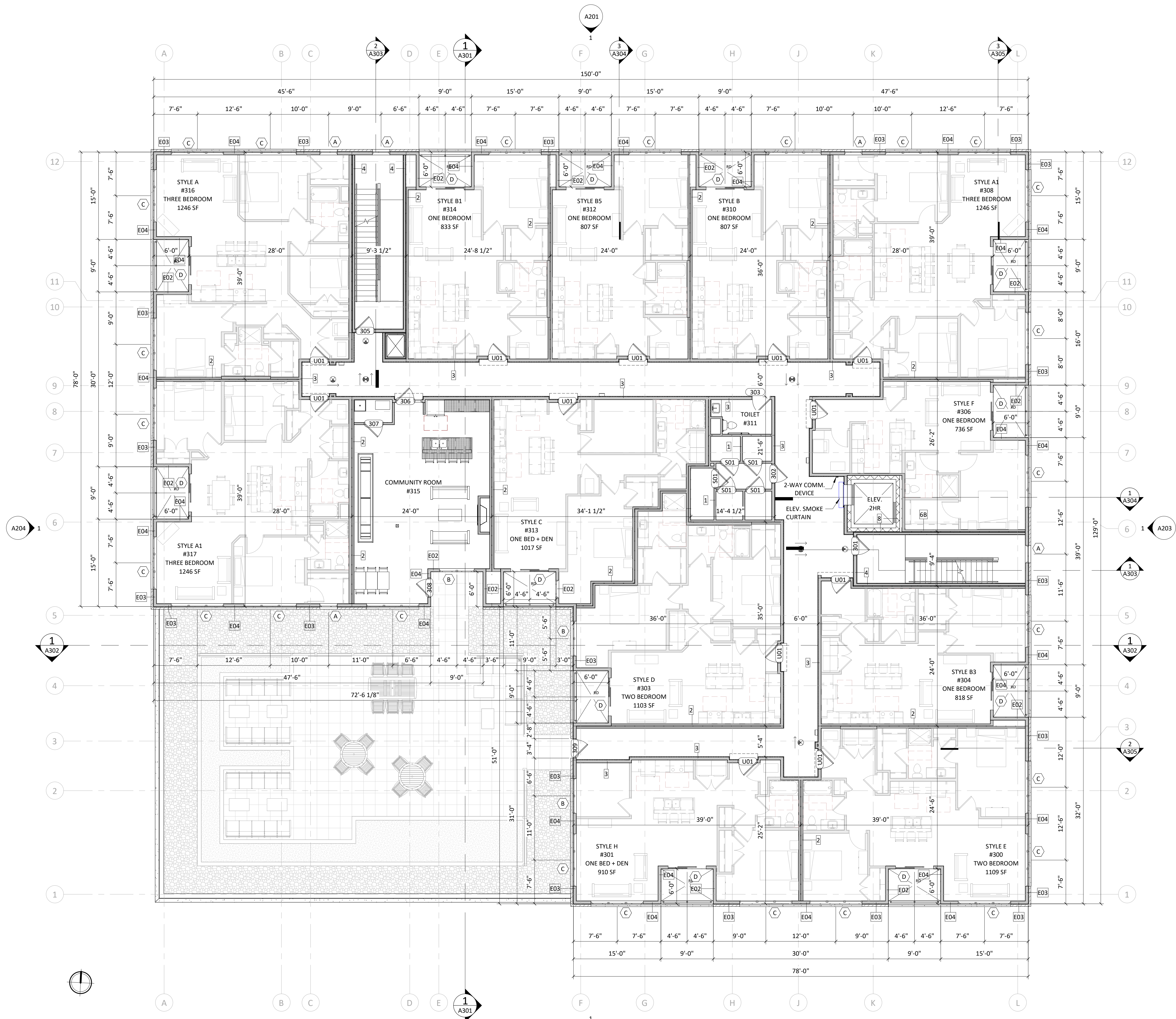
1/8 - 02 - SECOND FLOOR  
1/8" = 1'-0"





knothe • bruce  
ARCHITECTS

Phone: 8401 Greenway Blvd, Suite 900  
608.836.3690 Middleton, WI 53562



NOT FOR CONSTRUCTION

ISSUED  
2024-03-29 - ISSUED FOR BID

PROJECT TITLE  
River Point District  
- K1

Riverside North La  
Crosse, Wisconsin  
SHEET TITLE  
Third Floor Plan

SHEET NUMBER

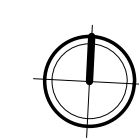
A103

PROJECT NUMBER

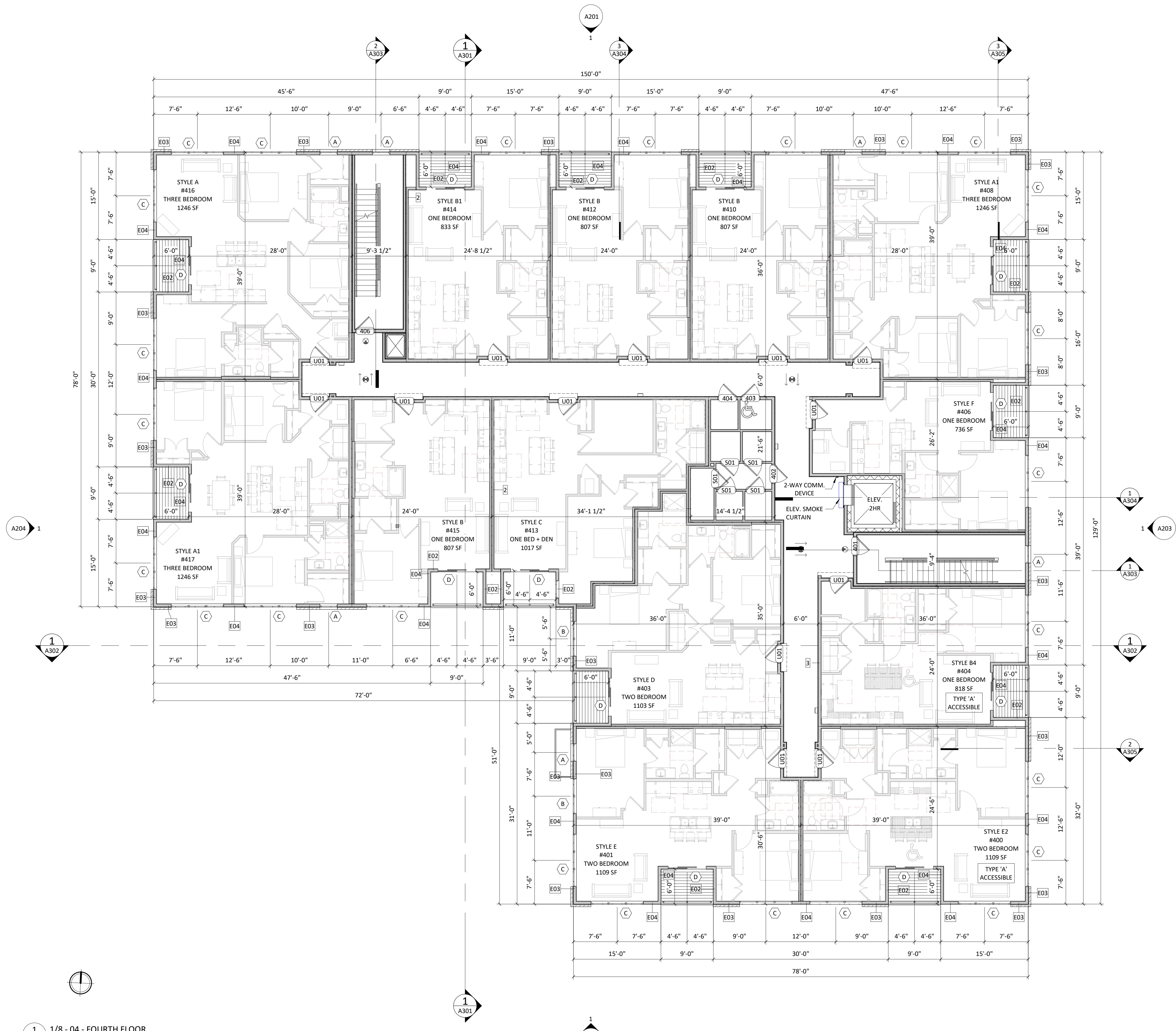
2151

© Knothe & Bruce Architects, LLC

1/8 - 03 - THIRD FLOOR  
1/8" = 1'-0"







ISSUED  
2024-03-29 - ISSUED FOR BID

NOT FOR CONSTRUCTION

PROJECT TITLE  
**River Point District  
- K1**

Riverside North La  
Crosse, Wisconsin  
SHEET TITLE  
**Fouth Floor Plan**

SHEET NUMBER

**A104**

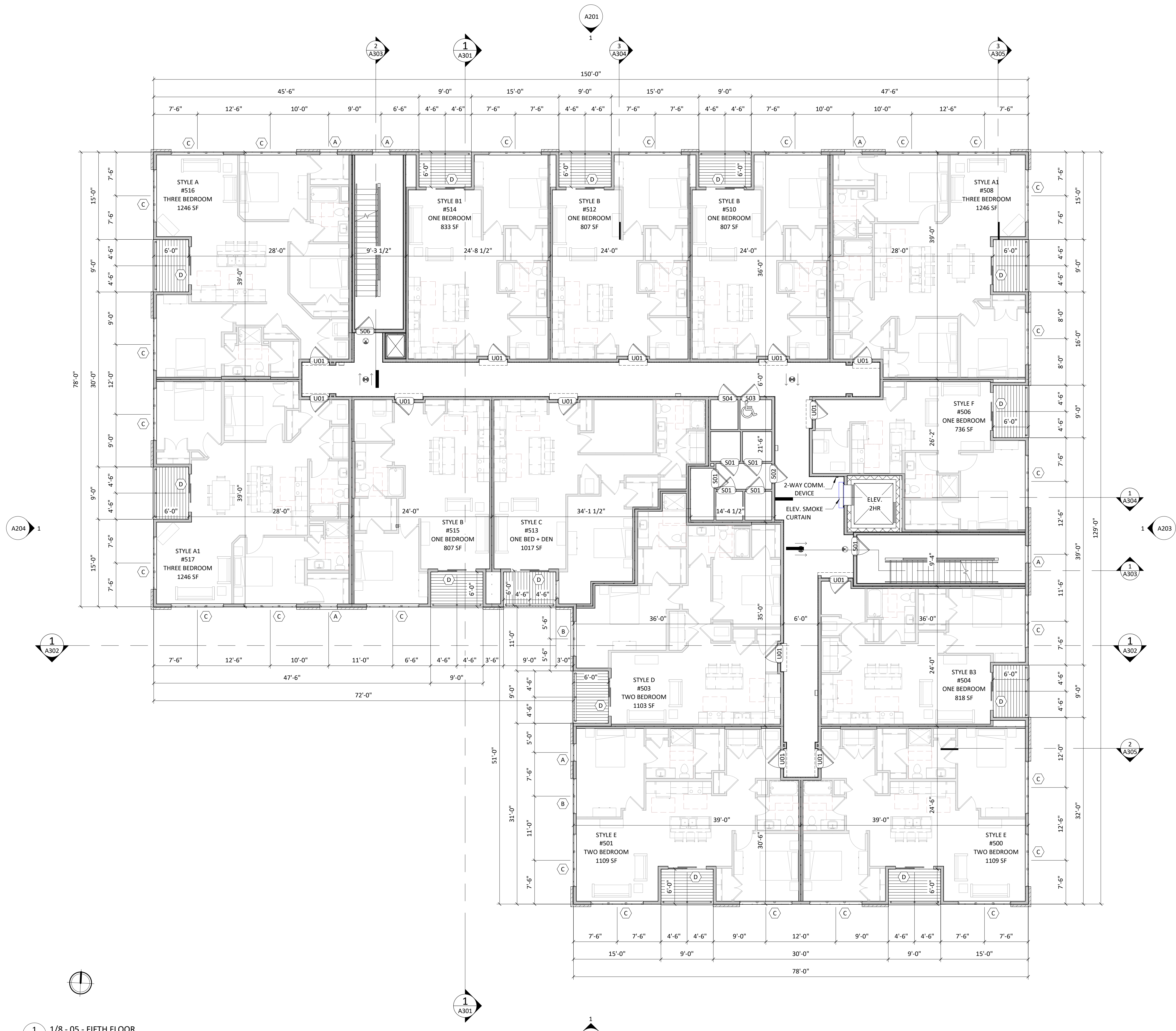
PROJECT NUMBER

**2151**



knothe • bruce  
ARCHITECTS

Phone: 8401 Greenway Blvd, Suite 900  
608.836.3690 Middleton, WI 53562



1  
A105 1/8" - 05 - FIFTH FLOOR  
1/8" = 1'-0"

NOT FOR CONSTRUCTION

ISSUED  
2024-03-29 - ISSUED FOR BID

PROJECT TITLE  
River Point District  
- K1

Riverside North La  
Crosse, Wisconsin  
SHEET TITLE  
Fifth Floor Plan

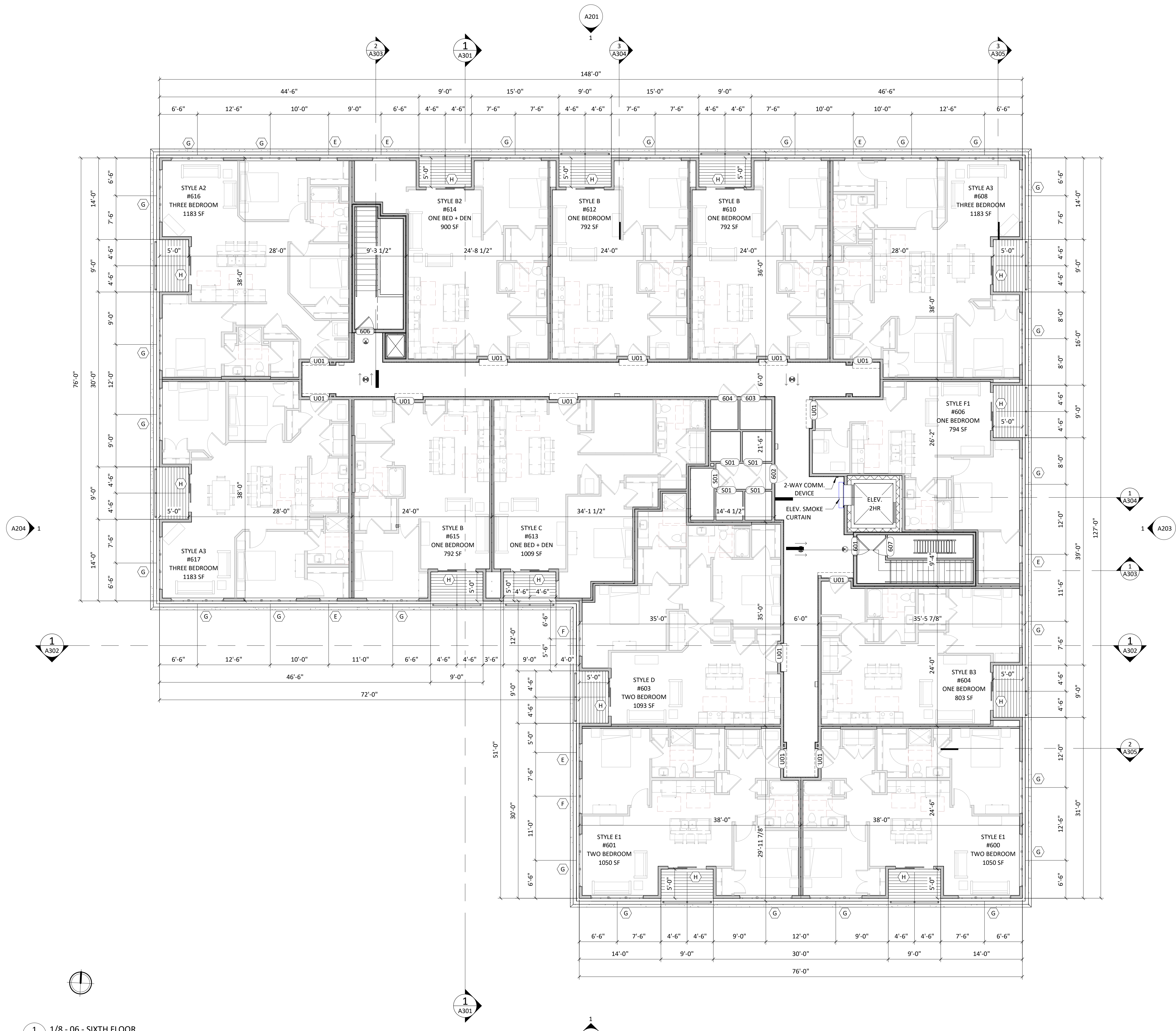
SHEET NUMBER

A105

PROJECT NUMBER

2151





NOT FOR CONSTRUCTION

ISSUED  
2024-03-29 - ISSUED FOR BID

PROJECT TITLE  
**River Point District  
- K1**

Riverside North La  
Crosse, Wisconsin  
SHEET TITLE  
**Sixth Floor Plan**

SHEET NUMBER

**A106**

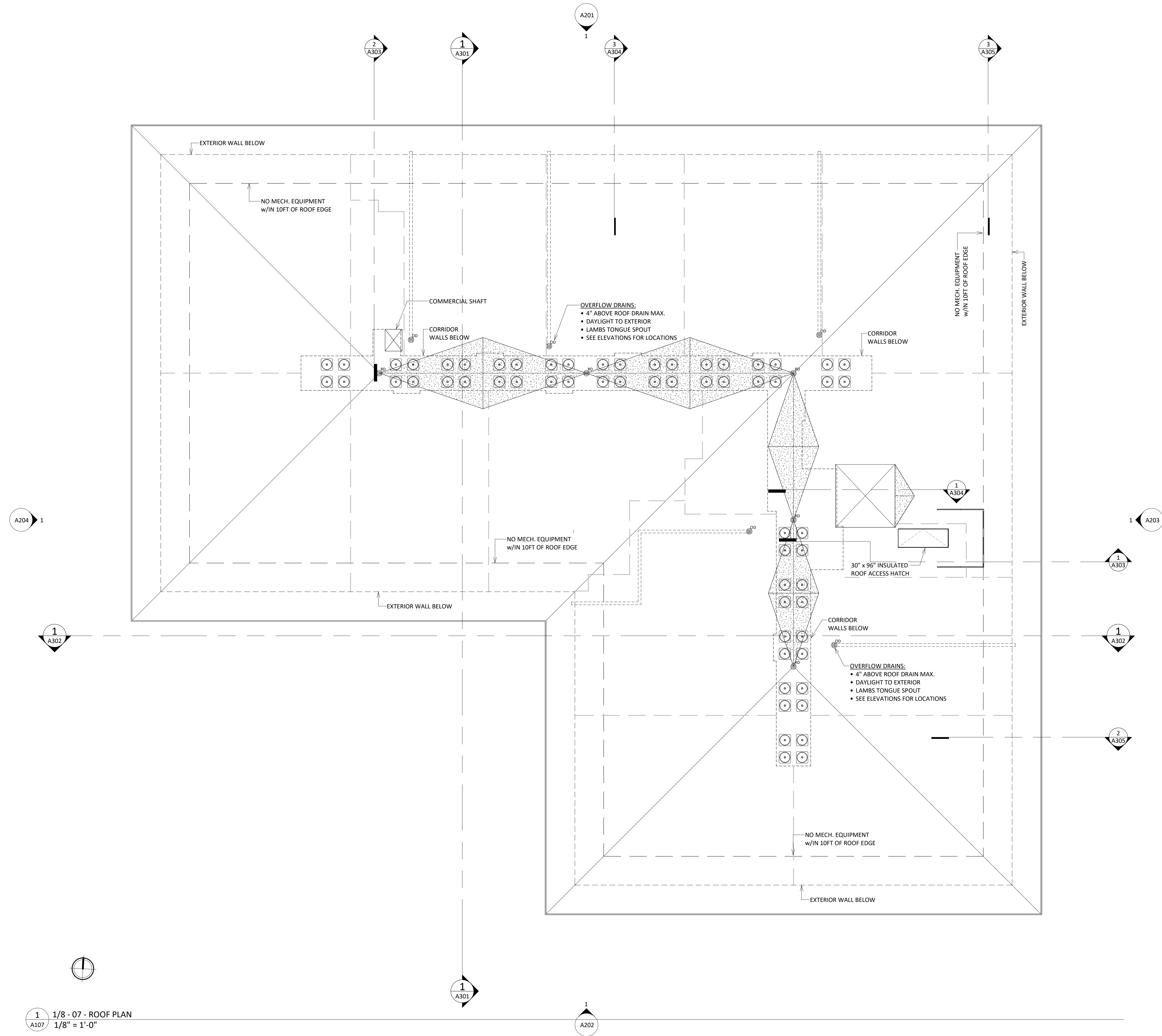
PROJECT NUMBER

**2151**



knothe • bruce  
ARCHITECTS

Phone: 8401 Greenway Blvd., Suite 900  
608.836.3690 Middleton, WI 53562



ISSUED  
2024-03-29 - ISSUED FOR BID

NOT FOR CONSTRUCTION

PROJECT TITLE  
River Point District  
- K1

Riverside North La  
Crosse, Wisconsin  
SHEET TITLE  
Roof Plan

SHEET NUMBER

A107

PROJECT NUMBER

2151

1  
A107 1/8 - 07 - ROOF PLAN  
1/8" = 1'-0"





1 ELEVATION - NORTH  
1/8" = 1'-0"

NOT FOR CONSTRUCTION

ISSUED  
2024-03-29 - ISSUED FOR BID

PROJECT TITLE  
River Point District  
- K1

EXTERIOR MATERIAL SCHEDULE			
BUILDING ELEMENT	MANUFACTURER	COLOR	
1	EXTRUDED ALUM. SIDING	LONG BOARD	LIGHT FIR
2	MCM PANEL	PAC-CLAD	BLACK ALUMINUM - PAC-3000 RS
3	4" COMPOSITE SIDING	JAMES HARDIE	JET BLACK
4	BRICK VENEER	INTERSTATE BRICK	ARCTIC WHITE
4.1	BRICK VENEER - SILLS	ARRISCRAFT	WHEAT
5	CAST STONE VENEER	ARRISCRAFT	CARBON - CAMBRIDGE RENAISSANCE - SANDBLASTED
6	CAST STONE - BANDS & SILLS	ARRISCRAFT	CARBON
7	COMPOSITE WINDOWS	TBD	BLACK EXT. - WHITE INT.
8	ALUM. STOREFRONT	TBD	BLACK
9	INSULATED METAL DOORS/ FRAMES	TBD	BLACK
10	RAILINGS & HANDRAILS	TBD	BLACK
11	CANOPIES & SOFFITS	LONG BOARD	LIGHT FIR
12	CANOPY SUPPORT CABLES	TBD	BLACK

Riverside North La  
Crosse, Wisconsin  
SHEET TITLE  
Exterior  
Elevations

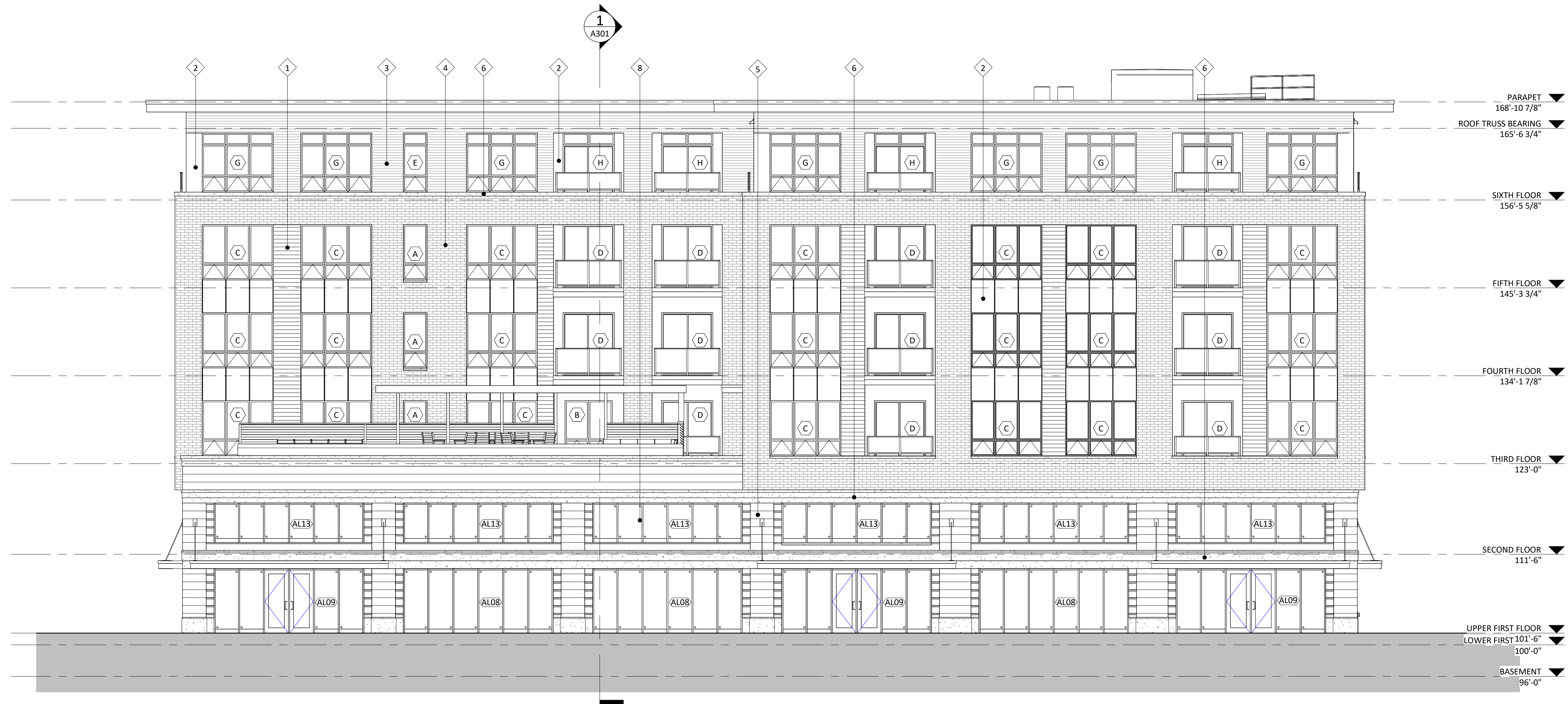
SHEET NUMBER

**A201**

PROJECT NUMBER

2151





1 ELEVATION - SOUTH  
A202 1/8" = 1'-0"

ISSUED  
2024-03-29 - ISSUED FOR BID

NOT FOR CONSTRUCTION

PROJECT TITLE  
River Point District  
- K1

EXTERIOR MATERIAL SCHEDULE			
BUILDING ELEMENT	MANUFACTURER	COLOR	
1	EXTRUDED ALUM. SIDING	LONG BOARD	LIGHT FIR
2	MCM PANEL	PAC-CLAD	BLACK ALUMINUM - PAC-3000 RS
3	4" COMPOSITE SIDING	JAMES HARDIE	JET BLACK
4	BRICK VENEER	INTERSTATE BRICK	ARCTIC WHITE
4.1	BRICK VENEER - SILLS	ARRISCRAFT	WHEAT
5	CAST STONE VENEER	ARRISCRAFT	CARBON - CAMBRIDGE RENAISSANCE - SANDBLASTED
6	CAST STONE - BANDS & SILLS	ARRISCRAFT	CARBON
7	COMPOSITE WINDOWS	TBD	BLACK EXT. - WHITE INT.
8	ALUM. STOREFRONT	TBD	BLACK
9	INSULATED METAL DOORS/ FRAMES	TBD	BLACK
10	RAILINGS & HANDRAILS	TBD	BLACK
11	CANOPIES & SOFFITS	LONG BOARD	LIGHT FIR
12	CANOPY SUPPORT CABLES	TBD	BLACK

Riverside North La  
Crosse, Wisconsin  
SHEET TITLE  
Exterior  
Elevations

SHEET NUMBER

**A202**

PROJECT NUMBER

2151



1 ELEVATION - EAST  
A203 1/8" = 1'-0"

NOT FOR CONSTRUCTION

ISSUED  
2024-03-29 - ISSUED FOR BID

PROJECT TITLE  
River Point District  
- K1

EXTERIOR MATERIAL SCHEDULE			
BUILDING ELEMENT	MANUFACTURER	COLOR	
1	EXTRUDED ALUM. SIDING	LONG BOARD	LIGHT FIR
2	MCM PANEL	PAC-CLAD	BLACK ALUMINUM - PAC-3000 RS
3	4" COMPOSITE SIDING	JAMES HARDIE	JET BLACK
4	BRICK VENEER	INTERSTATE BRICK	ARCTIC WHITE
4.1	BRICK VENEER - SILLS	ARRISCRAFT	WHEAT
5	CAST STONE VENEER	ARRISCRAFT	CARBON - CAMBRIDGE RENAISSANCE - SANDBLASTED
6	CAST STONE - BANDS & SILLS	ARRISCRAFT	CARBON
7	COMPOSITE WINDOWS	TBD	BLACK EXT. - WHITE INT.
8	ALUM. STOREFRONT	TBD	BLACK
9	INSULATED METAL DOORS/ FRAMES	TBD	BLACK
10	RAILINGS & HANDRAILS	TBD	BLACK
11	CANOPIES & SOFFITS	LONG BOARD	LIGHT FIR
12	CANOPY SUPPORT CABLES	TBD	BLACK

Riverside North La  
Crosse, Wisconsin  
SHEET TITLE  
Exterior  
Elevations

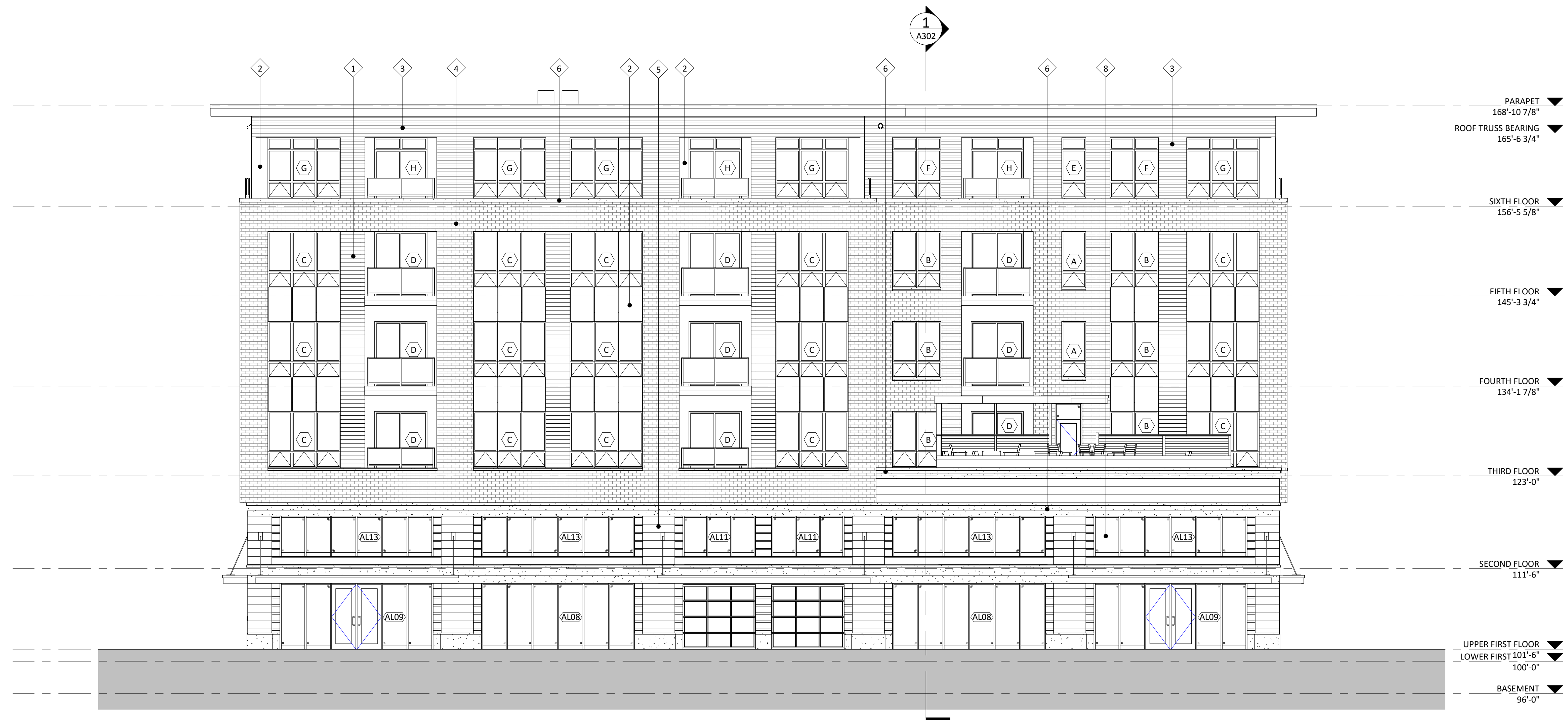
SHEET NUMBER

**A203**

PROJECT NUMBER

2151





1 ELEVATION - WEST  
A204 1/8" = 1'-0"

ISSUED  
2024-03-29 - ISSUED FOR BID

NOT FOR CONSTRUCTION

PROJECT TITLE  
River Point District  
- K1

EXTERIOR MATERIAL SCHEDULE		
BUILDING ELEMENT	MANUFACTURER	COLOR
1	EXTRUDED ALUM. SIDING	LONG BOARD
2	MCM PANEL	PAC-CLAD
3	4" COMPOSITE SIDING	JAMES HARDIE
4	BRICK VENEER	INTERSTATE BRICK
4.1	BRICK VENEER - SILLS	ARRISCROFT
5	CAST STONE VENEER	ARRISCRAFT
6	CAST STONE - BANDS & SILLS	ARRISCRAFT
7	COMPOSITE WINDOWS	TBD
8	ALUM. STOREFRONT	TBD
9	INSULATED METAL DOORS/ FRAMES	TBD
10	RAILINGS & HANDRAILS	TBD
11	CANOPIES & SOFFITS	LONG BOARD
12	CANOPY SUPPORT CABLES	TBD

Riverside North La  
Crosse, Wisconsin  
SHEET TITLE  
Exterior  
Elevations

SHEET NUMBER

**A204**

PROJECT NUMBER

2151





3 COLOR ELEVATION - EAST  
A205 1/16" = 1'-0"



1 COLOR ELEVATION - NORTH  
A205 1/16" = 1'-0"



4 COLOR ELEVATION - WEST  
A205 1/16" = 1'-0"



2 COLOR ELEVATION - SOUTH  
A205 1/16" = 1'-0"

ISSUED  
2024-03-29 - ISSUED FOR BID

NOT FOR CONSTRUCTION

PROJECT TITLE  
**River Point District  
- K1**

EXTERIOR MATERIAL SCHEDULE			
BUILDING ELEMENT	MANUFACTURER	COLOR	
1	EXTRUDED ALUM. SIDING	LONG BOARD	LIGHT FIR
2	MCM PANEL	PAC-CLAD	BLACK ALUMINUM - PAC-3000 RS
3	4" COMPOSITE SIDING	JAMES HARDIE	JET BLACK
4	BRICK VENEER	INTERSTATE BRICK	ARCTIC WHITE
4.1	BRICK VENEER - SILLS	ARRISCROFT	WHEAT
5	CAST STONE VENEER	ARRISCRAFT	CARBON - CAMBRIDGE RENAISSANCE - SANDBLASTED
6	CAST STONE - BANDS & SILLS	ARRISCRAFT	CARBON
7	COMPOSITE WINDOWS	TBD	BLACK EXT. - WHITE INT.
8	ALUM. STOREFRONT	TBD	BLACK
9	INSULATED METAL DOORS/ FRAMES	TBD	BLACK
10	RAILINGS & HANDRAILS	TBD	BLACK
11	CANOPIES & SOFFITS	LONG BOARD	LIGHT FIR
12	CANOPY SUPPORT CABLES	TBD	BLACK

Riverside North La  
Crosse, Wisconsin  
SHEET TITLE  
**Exterior  
Elevations Color**

SHEET NUMBER

**A205**

PROJECT NUMBER

**2151**