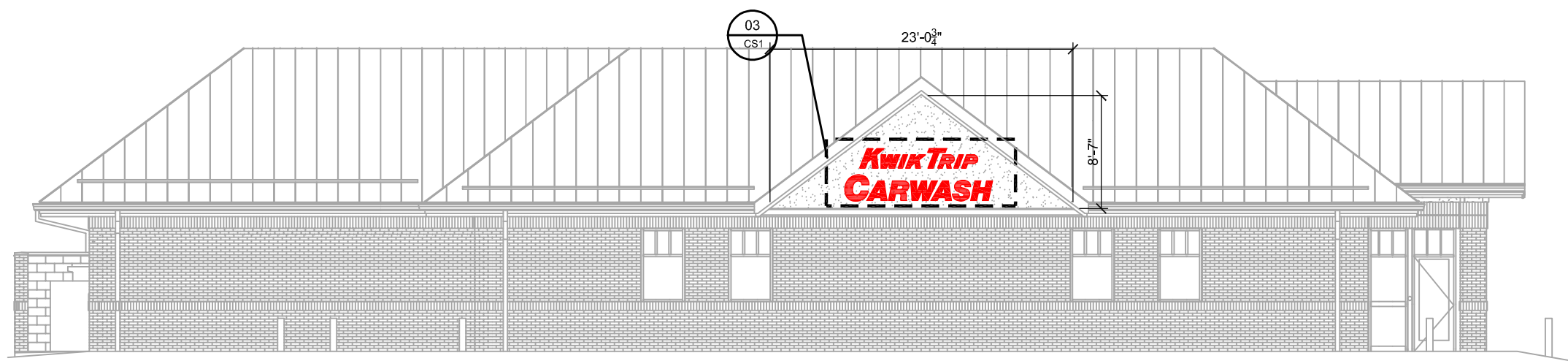


STORE ELEVATION

SCALE: 3/32" = 1'-0"



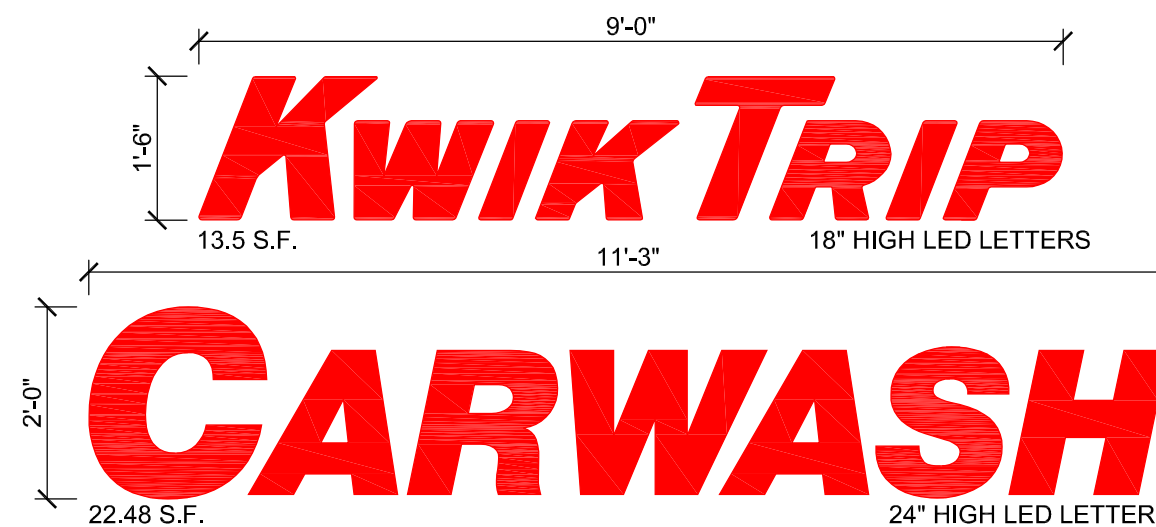
STORE ELEVATION

SCALE: 3/32" = 1'-0"



LOGO DETAIL - SIGN #01

SCALE: 1/2" = 1'-0"



LOGO DETAIL - SIGN #03

SCALE: 1/2" = 1'-0"

**Kwik  
TRIP**

**Kwik  
STAR**

KWIK TRIP, Inc.  
P.O. BOX 2107  
1626 OAK STREET  
LA CROSSE, WI 54602-2107  
PH. (608) 781-8988  
FAX (608) 781-8960

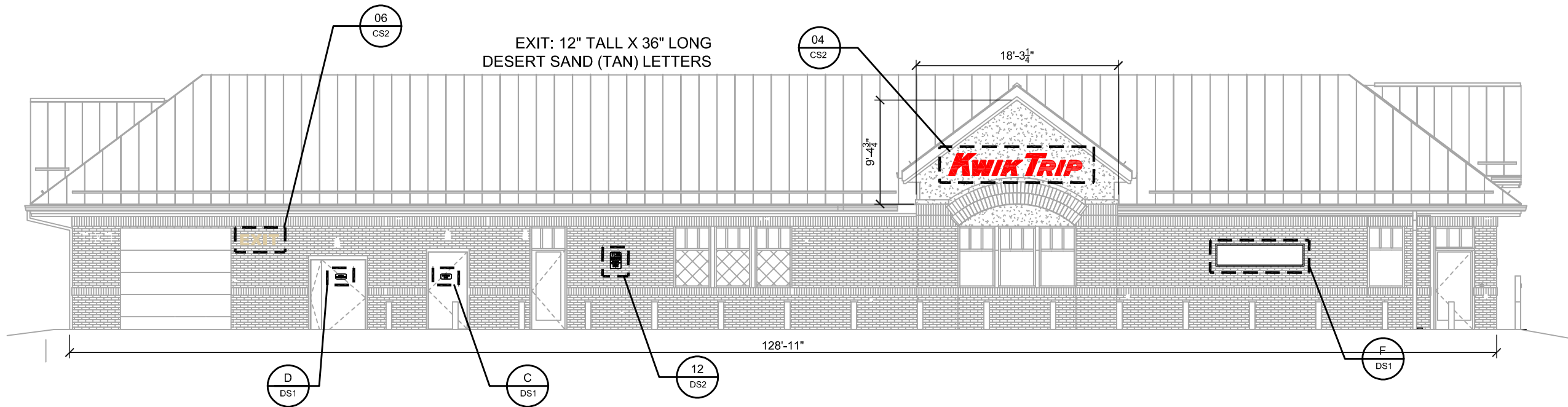
CONVENIENCE STORE SIGNAGE

CONVENIENCE STORE #762  
WITH CARWASH

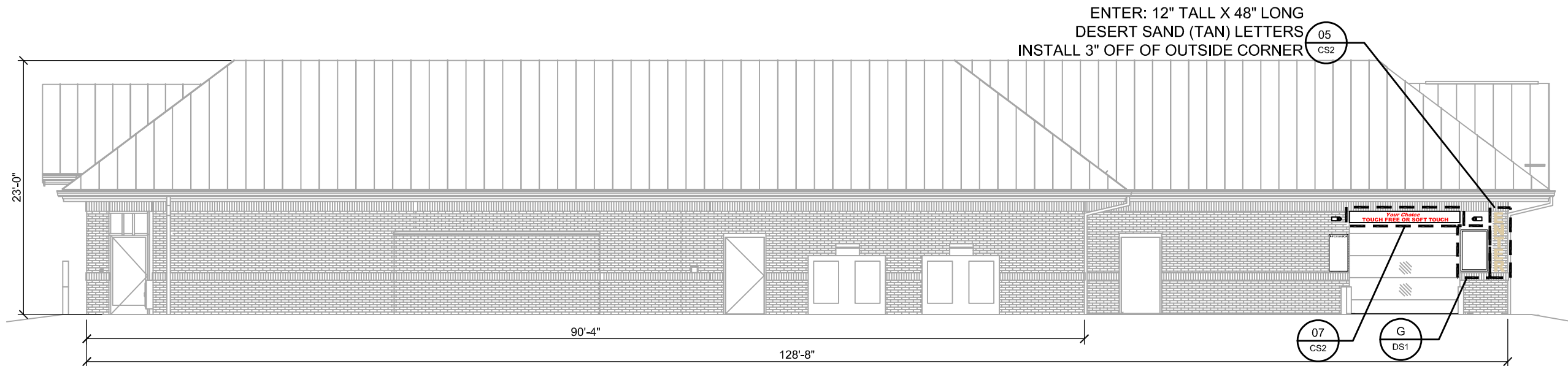
GEORGE ST  
LACROSSE WI

#	DATE	DESCRIPTION

DRAWN BY	KMK
SCALE	MULTIPLE
PROJ. NO.	0001
DATE	2024 01-16
SHEET	CS1



**STORE ELEVATION**  
SCALE: 3/32" = 1'-0"



**STORE ELEVATION**  
SCALE: 3/32" = 1'-0"



**LOGO DETAIL - SIGN #04**  
SCALE: 1/2" = 1'-0"

**Your Choice  
TOUCH FREE OR SOFT TOUCH**

NON-LIT INFORMATIONAL SIGN  
RED VINYL ON WHITE ALUMINUM  
1'-0"H X 10'-0"W = 10.0 SQ FT

**INFORMATIONAL SIGN #07**  
SCALE: 1/2" = 1'-0"

**KWIK  
TRIP**

**KWIK  
STAR**

KWIK TRIP, Inc.  
P.O. BOX 2107  
1626 OAK STREET  
LA CROSSE, WI 54602-2107  
PH. (608) 781-8988  
FAX (608) 781-8960

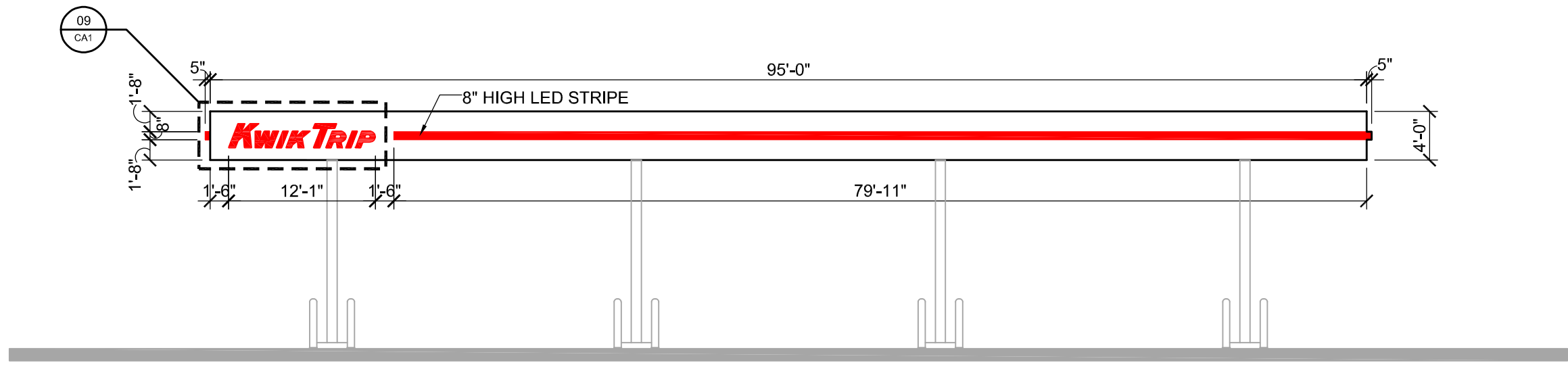
CONVENIENCE STORE SIGNAGE

CONVENIENCE STORE #762  
WITH CARWASH

GEORGE ST  
LACROSSE WI

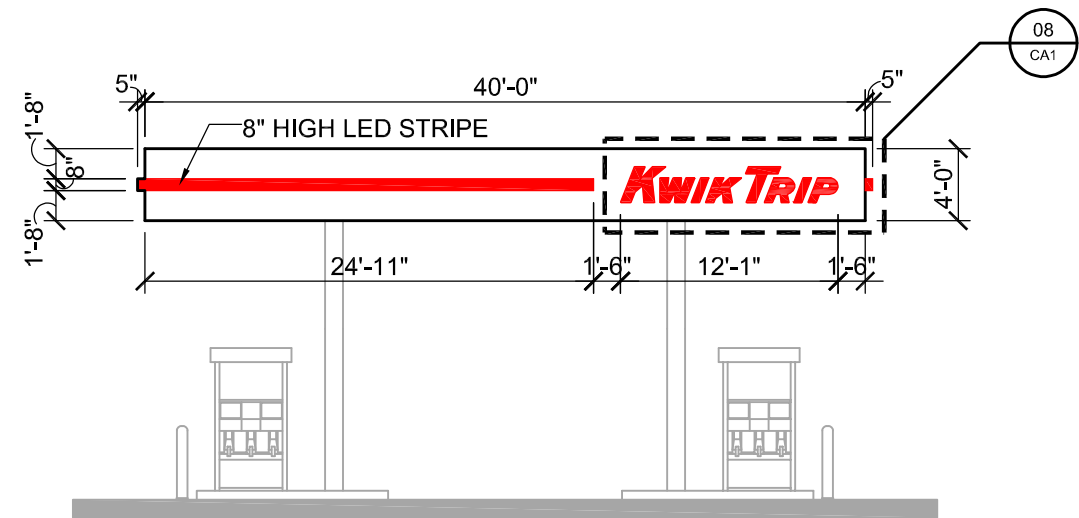
#	DATE	DESCRIPTION

DRAWN BY: KMK  
SCALE: MULTIPLE  
PROJ. NO.: 0001  
DATE: 2024 01-16  
SHEET: CS2



**CANOPY ELEVATION**

SCALE: 3/32" = 1'-0"



**CANOPY ELEVATION**

SCALE: 3/32" = 1'-0"



**LOGO DETAIL - SIGNS #08 & #09**

SCALE: 1/2" = 1'-0"

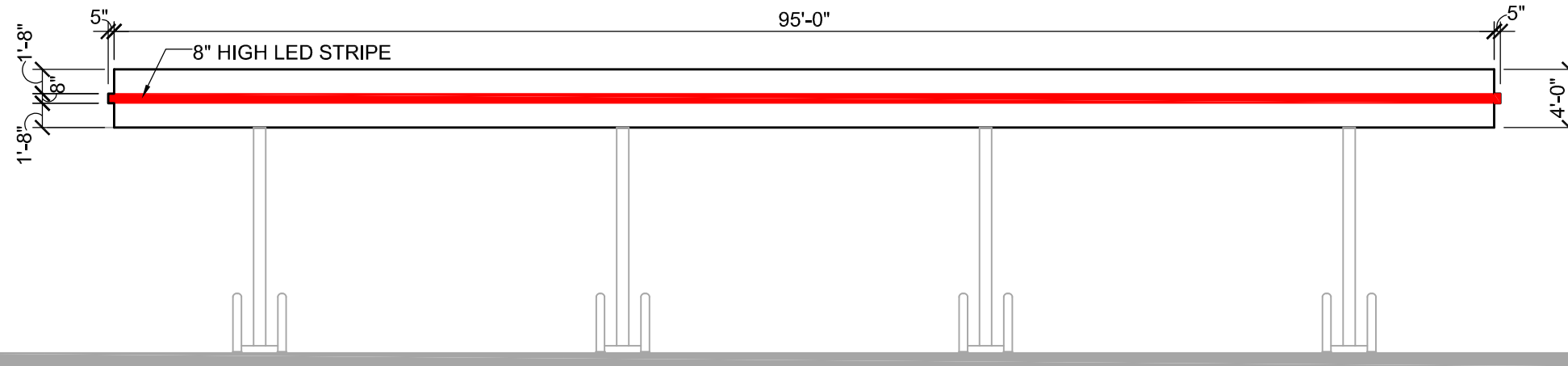


KWIK TRIP, Inc.  
P.O. BOX 2107  
1626 OAK STREET  
LA CROSSE, WI 54602-2107  
PH. (608) 781-8988  
FAX (608) 781-8960

CANOPY SIGNAGE  
CONVENIENCE STORE #762  
WITH CARWASH  
GEORGE ST  
LACROSSE WI

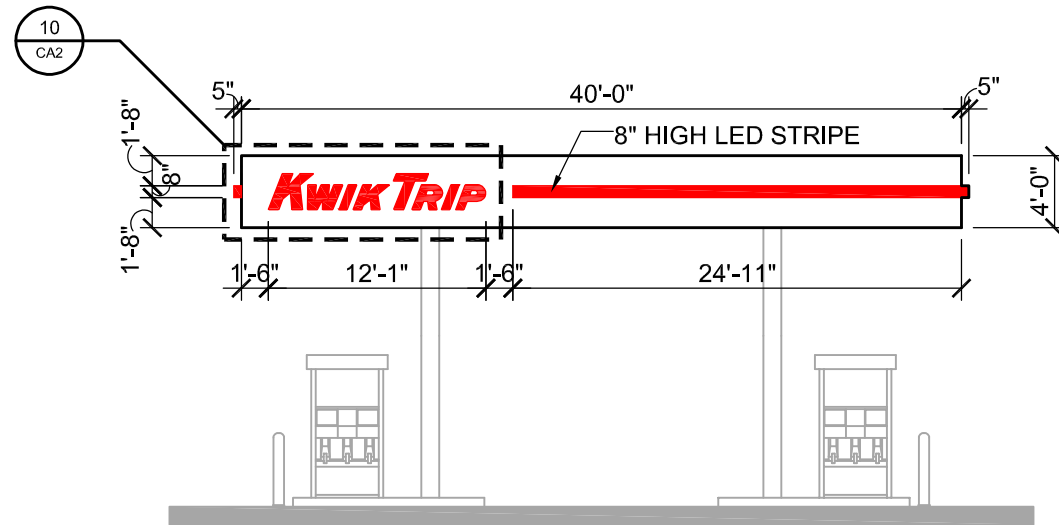
#	DATE	DESCRIPTION

DRAWN BY: KMK  
SCALE: MULTIPLE  
PROJ. NO.: 0001  
DATE: 2024 01-16  
SHEET: CA1



**CANOPY ELEVATION**

SCALE: 3/32" = 1'-0"



**CANOPY ELEVATION**

SCALE: 3/32" = 1'-0"



**LOGO DETAIL - SIGN #10**

SCALE: 1/2" = 1'-0"

**KWIK  
TRIP**

**KWIK  
STAR**

KWIK TRIP, Inc.  
P.O. BOX 2107  
1626 OAK STREET  
LA CROSSE, WI 54602-2107  
PH. (608) 781-8988  
FAX (608) 781-8960

CANOPY SIGNAGE

CONVENIENCE STORE #762  
WITH CARWASH

GEORGE ST  
LACROSSE WI

#	DATE	DESCRIPTION

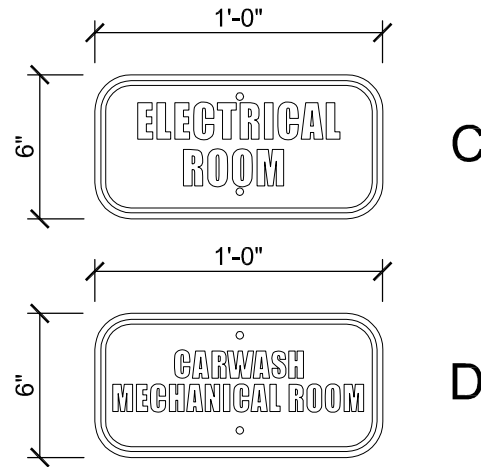
DRAWN BY: KMK  
SCALE: MULTIPLE  
PROJ. NO.: 0001  
DATE: 2024 01-16  
SHEET: CA2



5" WHITE VINYL ADDRESS LETTERS  
ON GLASS DOOR AS SHOWN ABOVE  
(VERIFY ACTUAL NUMBERS WITH PROJECT MANAGER)

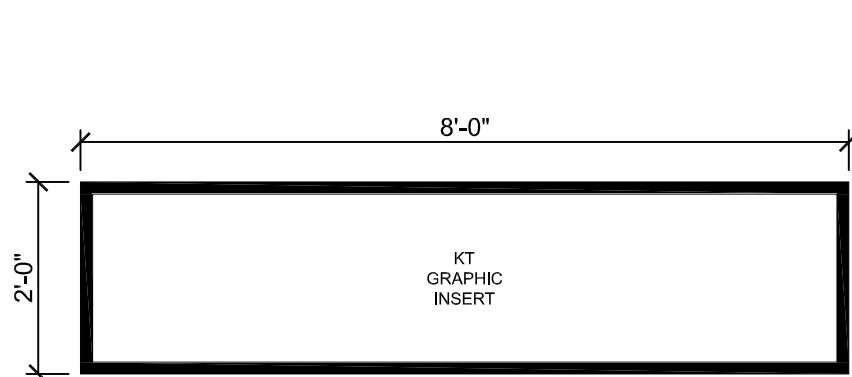
**ADDRESS SIGN A**

SCALE: 3/4" = 1'-0"

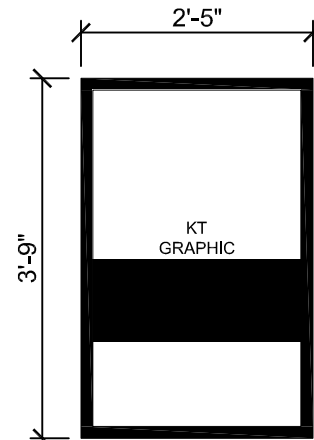


**INFORMATIONAL SIGNS C & D**

SCALE: 1 1/2" = 1'-0"



"SIGN F"  
BLACK ALUMINUM FRAME



"SIGN G"  
BLACK ALUMINUM FRAME



NON-LIT DIRECTIONAL SIGN  
WHITE VINYL ON RED ALUMINUM  
1'-0"H X 4'-0"W = 4.0 SQ FT

**DIRECTIONAL SIGN #02**

SCALE: 3/4" = 1'-0"

**GENERAL SPECIFICATIONS**

**ROOM SIGNS**  
Qty: 3 total (different copy on each)  
Size: per art  
Material: white sign blank  
Finish: cut vinyl

Install along with various signs for same site, crew to give to KT trim guys to install.

**KWIK TRIP**

**KWIK STAR**

KWIK TRIP, Inc.  
P.O. BOX 2107  
1626 OAK STREET  
LA CROSSE, WI 54602-2107  
PH. (608) 781-8988  
FAX (608) 781-8960

DIRECTIONAL SIGNAGE

CONVENIENCE STORE #762  
WITH CARWASH

GEORGE ST  
LACROSSE WI

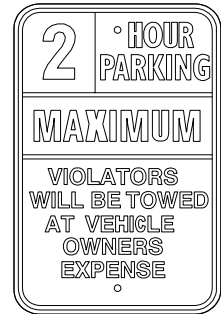
#	DATE	DESCRIPTION

DRAWN BY	KMK
SCALE	MULTIPLE
PROJ. NO.	0001
DATE	2024 01-16
SHEET	DS1

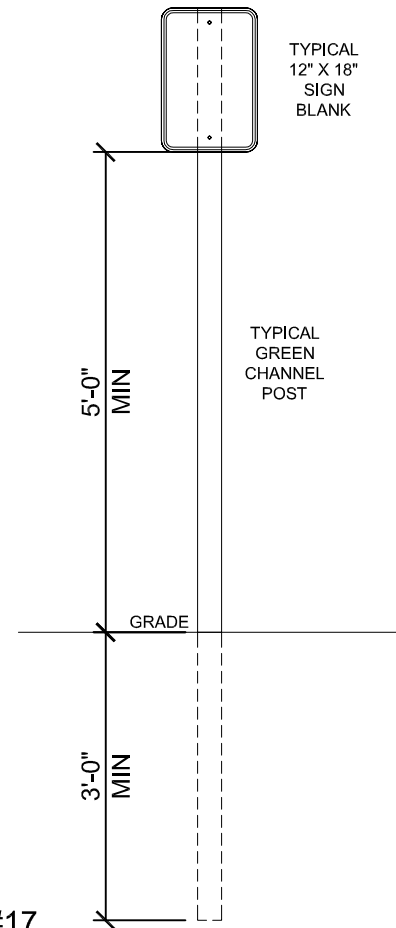
**INFORMATIONAL SIGNS F & G**

SCALE: 1/2" = 1'-0"

SINGLE SIDED SIGN



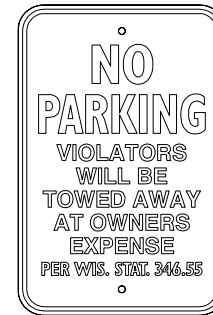
12" X 18" ALUMINUM SIGN  
QTY: 7



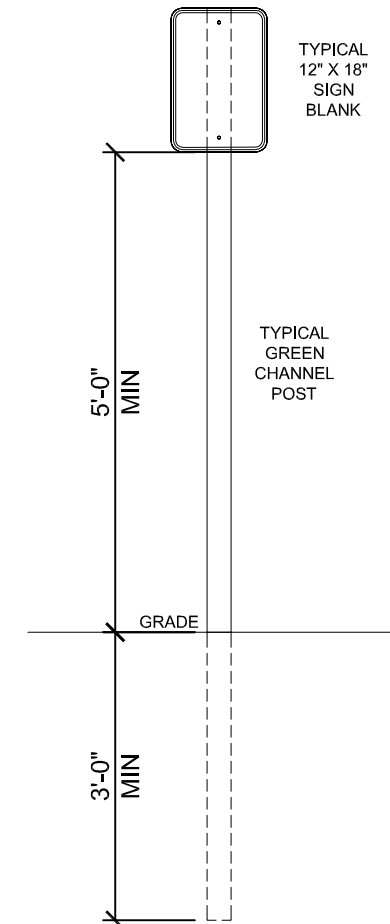
**2 HOUR PARKING SIGNS #11, #12, #13, #14, #15, #16, #17**

SCALE: 1/2" = 1'-0"

SINGLE SIDED SIGN



12" X 18" ALUMINUM SIGN  
QTY: 2

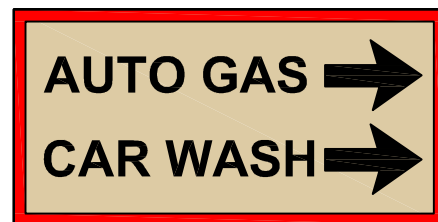


**1 HOUR PARKING SIGNS #18, #19**

SCALE: 1/2" = 1'-0"

DOUBLE SIDED DIRECTIONAL SIGN

NORTH SIDE



SOUTH SIDE



NON-LIT DIRECTIONAL SIGN  
RED & BLACK VINYL ON LIGHT BEIGE ALUMINUM  
1'-6"H X 3'-0"W X 4'-6"T= 4.50 SQ FT

**DIRECTIONAL SIGN #20**

SCALE: 3/4" = 1'-0"

SINGLE SIDED DIRECTIONAL SIGN

NORTH SIDE



NON-LIT DIRECTIONAL SIGN  
RED & BLACK VINYL ON LIGHT BEIGE ALUMINUM  
1'-6"H X 3'-0"W X 4'-6"T= 4.50 SQ FT

**DIRECTIONAL SIGN #21**

SCALE: 3/4" = 1'-0"



KWIK TRIP, Inc.  
P.O. BOX 2107  
1626 OAK STREET  
LA CROSSE, WI 54602-2107  
PH. (608) 781-8988  
FAX (608) 781-8960

DIRECTIONAL SIGNAGE  
CONVENIENCE STORE #762  
WITH CARWASH  
GEORGE ST  
LACROSSE WI

#	DATE	DESCRIPTION
△	03/01/24	BKGD UPDATE

DRAWN BY	KMK
SCALE	MULTIPLE
PROJ. NO.	0001
DATE	2024 01-16
SHEET	DS2

SINGLE SIDED DIRECTIONAL SIGN  
NORTH SIDE



NON-LIT DIRECTIONAL SIGN  
RED & BLACK VINYL ON LIGHT BEIGE ALUMINUM  
1'-6" H X 3'-0" W X 4'-6" T = 4.50 SQ FT

DIRECTIONAL SIGNS #22, #23, #24

SCALE: 3/4" = 1'-0"

#27 KWIK TRIP FREESTANDING MONUMENT SIGN

SEE ATTACHED ARTWORK

#25 KWIK TRIP FREESTANDING MONUMENT SIGN

SEE ATTACHED ARTWORK

**KWIK  
TRIP**

**KWIK  
STAR**

KWIK TRIP, Inc.  
P.O. BOX 2107  
1626 OAK STREET  
LA CROSSE, WI 54602-2107  
PH. (608) 781-8988  
FAX (608) 781-8960

DIRECTIONAL SIGNAGE

CONVENIENCE STORE #762  
WITH CARWASH

GEORGE ST  
LACROSSE WI

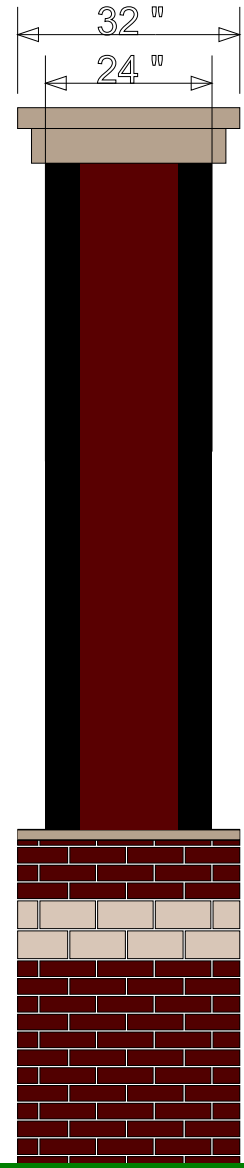
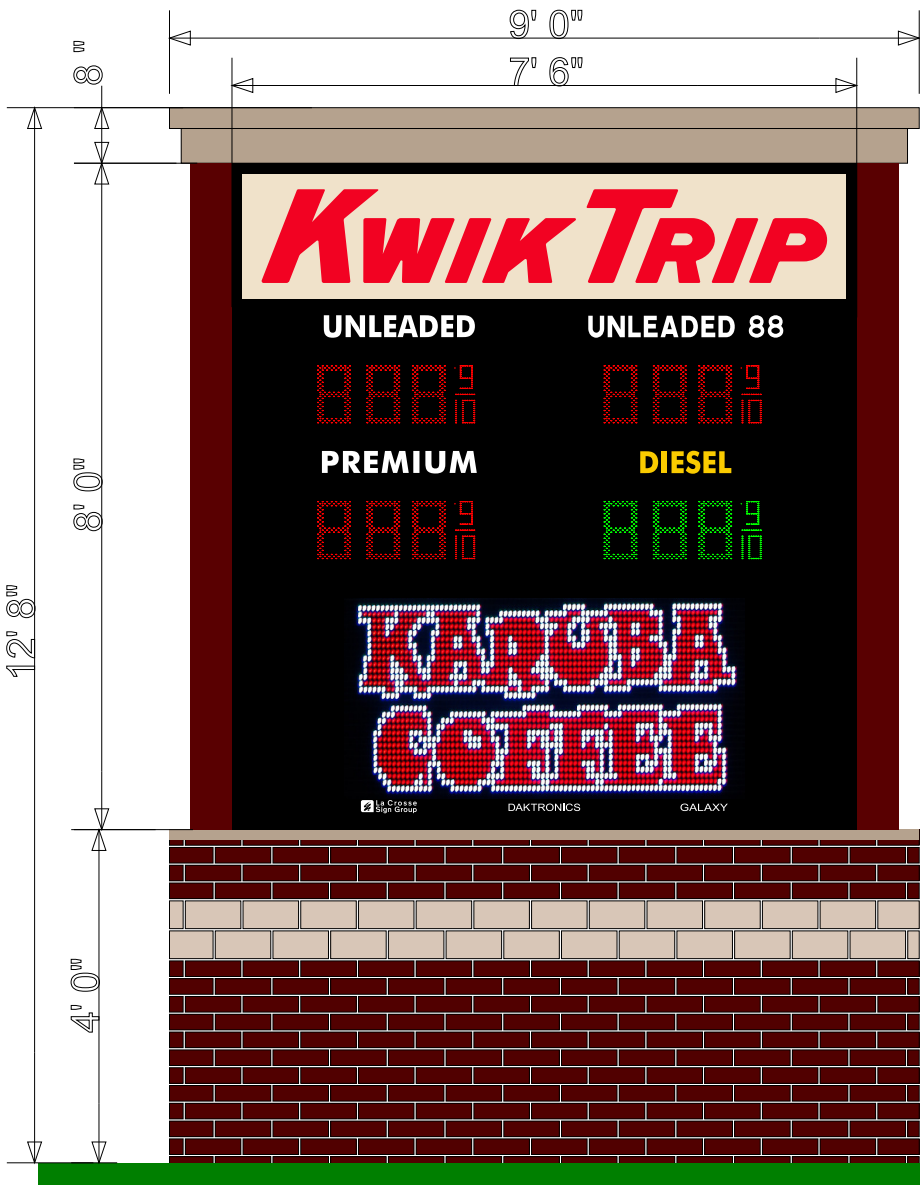
#	DATE	DESCRIPTION
△	03/01/24	BKGD UPDATE

DRAWN BY	KMK
SCALE	MULTIPLE
PROJ. NO.	0001
DATE	2024 01-16
SHEET	DS3



**NEW DOUBLE FACED MONUMENT**

**#762 LA CROSSE, WI**



KWIK TRIP Face  
Has Opaque  
Background with  
Red Acrylic Logo  
10.88 SQ FT

8" PRICERS  
Have Opaque  
Black Background  
with Illuminated  
Product Names  
2.06 SQ FT Each Pricer  
8.24 SQ FT Total Pricers

90x180  
8mm RGB  
Active SQ FT 11.52  
Overall SQ FT 14.68

Overall Sign  
SQ FT 60

Approved by: \_\_\_\_\_ Date: \_\_\_\_\_ Landlord: \_\_\_\_\_ Date: \_\_\_\_\_

This artwork is copyrighted and may not be otherwise used without permission. It is the property of La Crosse Sign Co., Inc., and must be returned to them.

[lacrossesign.com](http://lacrossesign.com)

**DESIGN**

**SALES**

**FILE**

**COLOR KEY**

\*COLORS ON SKETCH ARE ONLY A REPRESENTATION. ACTUAL COLOR OF FINISHED PRODUCT MAY DIFFER.



1450 Oak Forest Drive • Onalaska, WI 54650 • 608-781-1450  
2242 Mustang Way • Madison, WI 53718 • 608-222-5353  
2502 Melby Street • Eau Claire, WI 54703 • 715-835-6189

Drawing by: Danielle Hadley  
Sign Type: Monument  
Date Created:  
Last Modified:  
Scale: 3/8" = 1' 0"

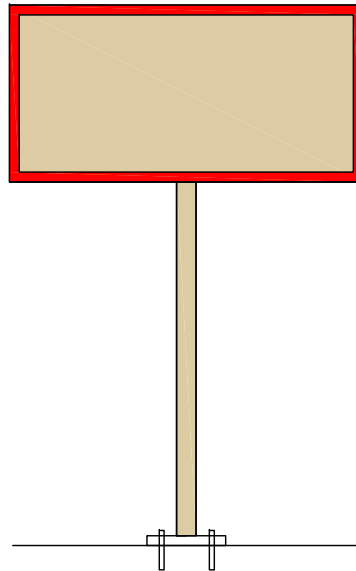
Job Name: Kwik Trip  
Job Address:  
La Crosse, WI  
Salesperson: Cindy Bluske  
Job Number: 107759

Revision Number:  
Job File Location:

- a ■ TBD
- b ■
- c ■
- d □
- e □
- f □

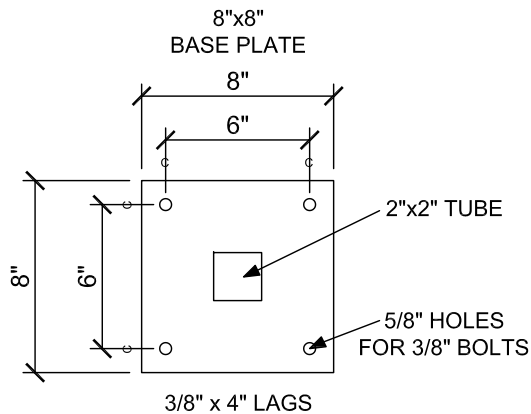
- g □ TBD
- h □
- i □
- j □
- k □
- l ■

SINGLE SIDED NON-LIT DIRECTIONAL SIGN



**DIRECTIONAL SIGN EXAMPLE**

SCALE: NTS



**NOTES:**

- Sign vendor to anchor sign/s to concrete pad
- Sign vendor to anchor signs with (4) 3/8" x 4" lags & shield anchors. Use stainless steel hardware
- Stainless steel flat washers may be used under base plate as needed to shim sign to be plumb
- Concrete Pad installed by others (Kwik Trip/Kwik Star Concrete Vendor)
  - Concrete Pad to be 5"x 36"x 36"
  - Center of footing to be installed 48" from face of curb



**DIRECTIONAL SIGN BASE PLATE**

SCALE: 1 1/2" = 1'-0"

	KWIK TRIP, Inc. P.O. BOX 2107 1626 OAK STREET LA CROSSE, WI 54602-2107 PH. (608) 781-8988 FAX (608) 781-8960	PROJECT: Store- All Stores Date - 08/31/2023  DESCRIPTION: All Directional signs will have a single post per the detail above	SCB #1