

# RIVER POINT DISTRICT - K1

Riverside North La Crosse, Wisconsin

PROJECT NUMBER 2151



## SHEET INDEX

- G0.0 Cover Sheet
- A1.1 First Floor Plan
- A1.2 Second Floor Plan
- A1.3 Third Floor Plan
- A1.4 Fourth Floor Plan
- A1.5 Fifth Floor Plan
- A1.6 Sixth Floor Plan
- A1.7 Roof Plan
- A2.1 Exterior Elevations
- A2.2 Exterior Elevations
- A2.3 Exterior Elevations
- A2.4 Exterior Elevations
- A2.5 Exterior Elevations Color

UNIT - TOTALS	
ONE BED + DEN	6
ONE BEDROOM	22
THREE BEDROOM	12
TWO BEDROOM	11
<b>TOTAL UNITS: 51</b>	

GROSS AREAS	
LEVEL	GROSS AREA
GROUND FLOOR	18699 SF
SECOND FLOOR	18699 SF
THIRD FLOOR	14976 SF
FOURTH FLOOR	14976 SF
FIFTH FLOOR	14976 SF
SIXTH FLOOR	14539 SF
<b>TOTAL AREA</b>	<b>96864 SF</b>

PARKING COUNT - VEHICLES	
LEVEL	TYPE
SECOND FLOOR	ADA PARKING STALL
1	
SECOND FLOOR	TYPICAL PARKING STALL
18	
SECOND FLOOR: 19	
LOWER FIRST FLOOR	ADA PARKING STALL
1	
LOWER FIRST FLOOR	TYPICAL PARKING STALL
13	
LOWER FIRST FLOOR: 14	
<b>TOTAL PARKING COUNT: 33</b>	

ISSUED  
 2024-02-09 - Progress Set  
 2024-02-23 - Preliminary Design Review



SHEET TITLE  
**Cover Sheet**

SHEET NUMBER  
**G0.0**





knothe • bruce  
ARCHITECTS

Phone: 8401 Greenway Blvd., Suite 900  
608.836.3690 Middleton, WI 53562

ISSUED  
2024-02-09 - Progress Set  
2024-02-23 - Preliminary Design Review

PROJECT TITLE  
RIVER POINT  
DISTRICT - K1

Riverside North La  
Crosse, Wisconsin  
SHEET TITLE  
First Floor Plan

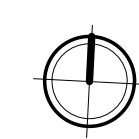
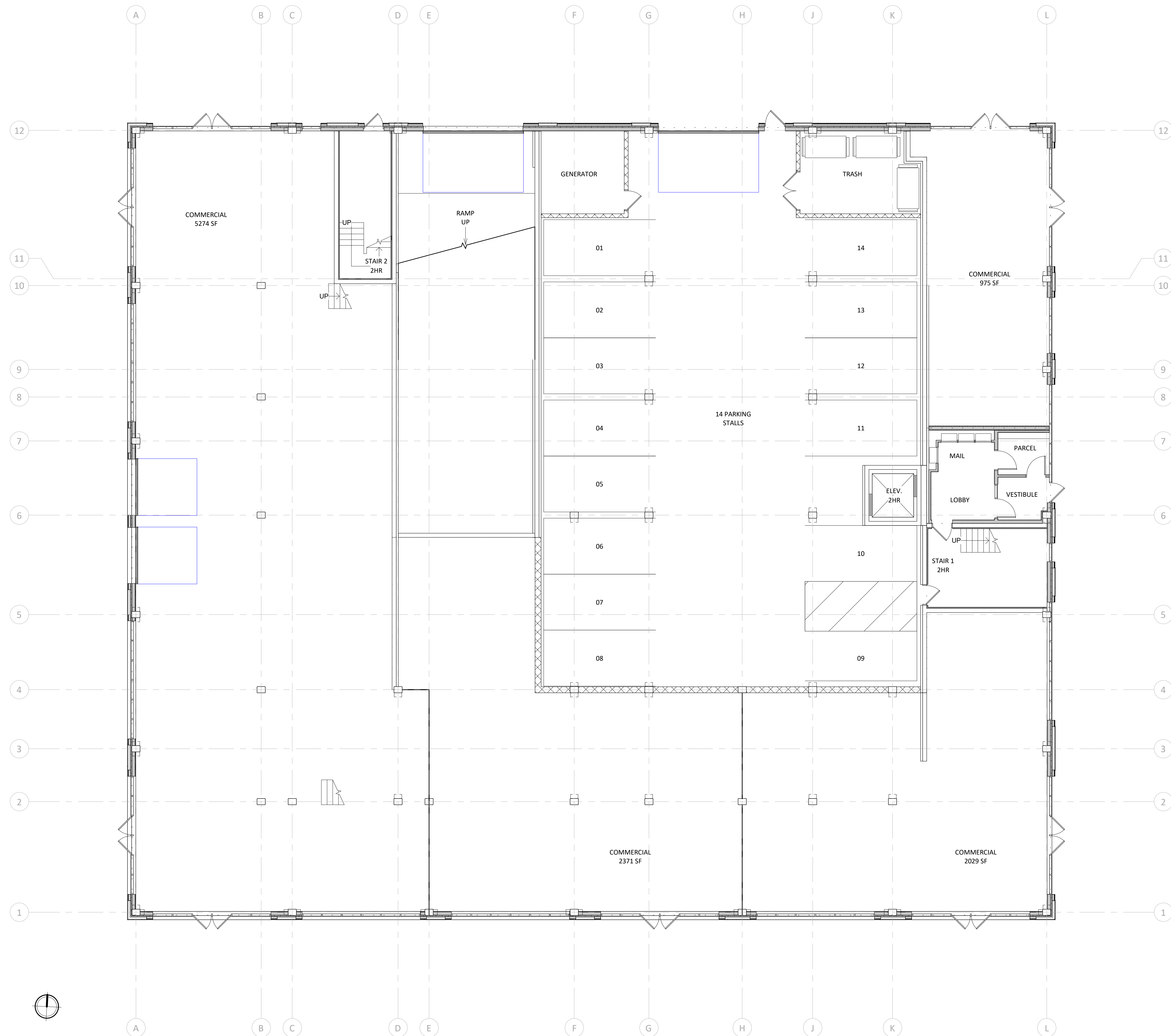
SHEET NUMBER

A1.1

PROJECT NUMBER

2151

© Knothe & Bruce Architects, LLC



1 CITY - 01 - FIRST FLOOR  
A1.1 1/8" = 1'-0"



knothe • bruce  
ARCHITECTS

Phone: 8401 Greenway Blvd., Suite 900  
608.836.3690 Middleton, WI 53562

ISSUED  
2024-02-09 - Progress Set  
2024-02-23 - Preliminary Design Review

PROJECT TITLE  
RIVER POINT  
DISTRICT - K1

Riverside North La  
Crosse, Wisconsin  
SHEET TITLE  
Second Floor Plan

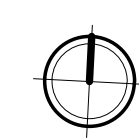
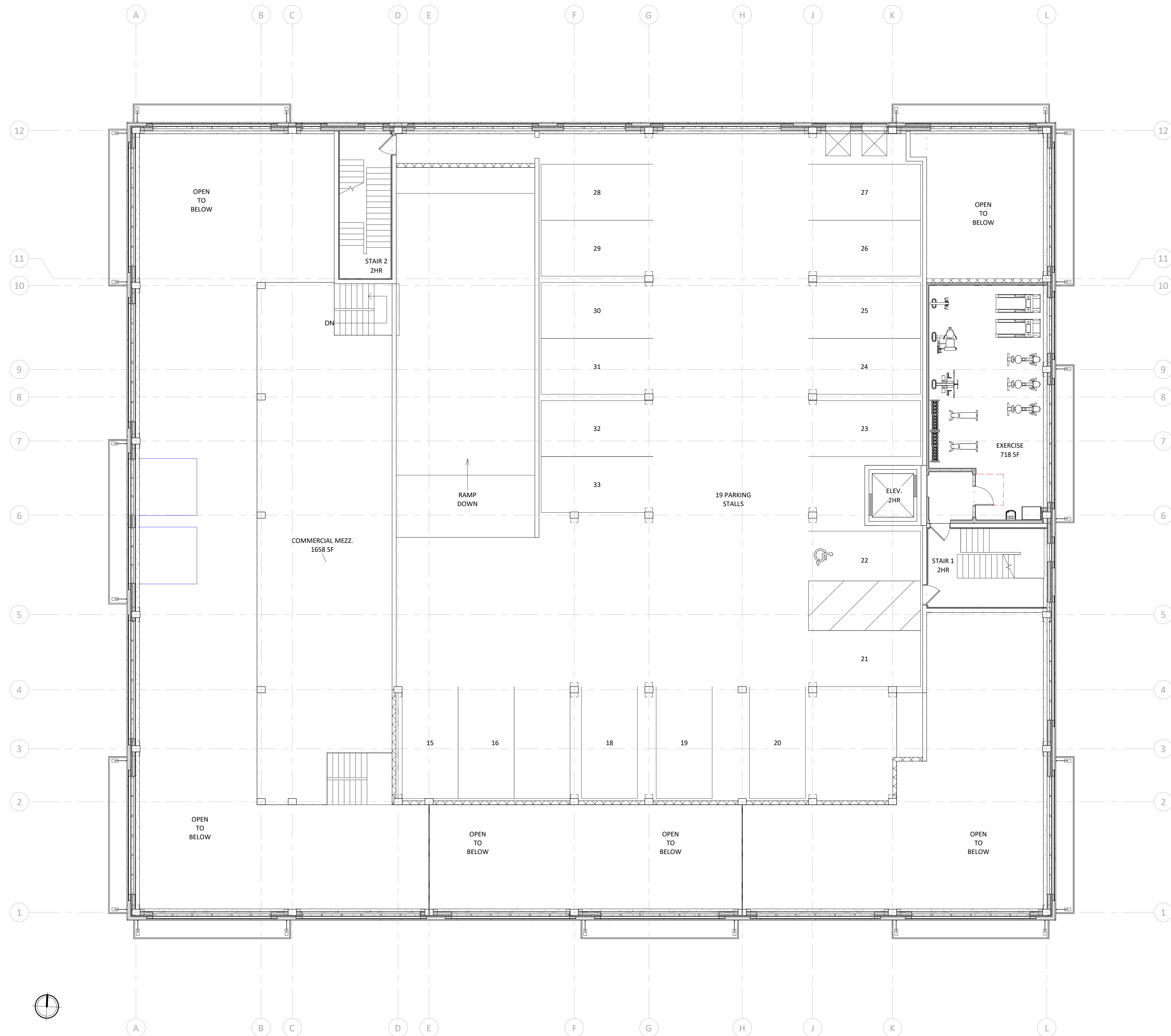
SHEET NUMBER

A1.2

PROJECT NUMBER

2151

© Knothe & Bruce Architects, LLC



1 CITY - 02 - SECOND FLOOR  
A1.2 1/8" = 1'-0"

ISSUED  
2024-02-09 - Progress Set  
2024-02-23 - Preliminary Design Review

PROJECT TITLE  
**RIVER POINT  
DISTRICT - K1**

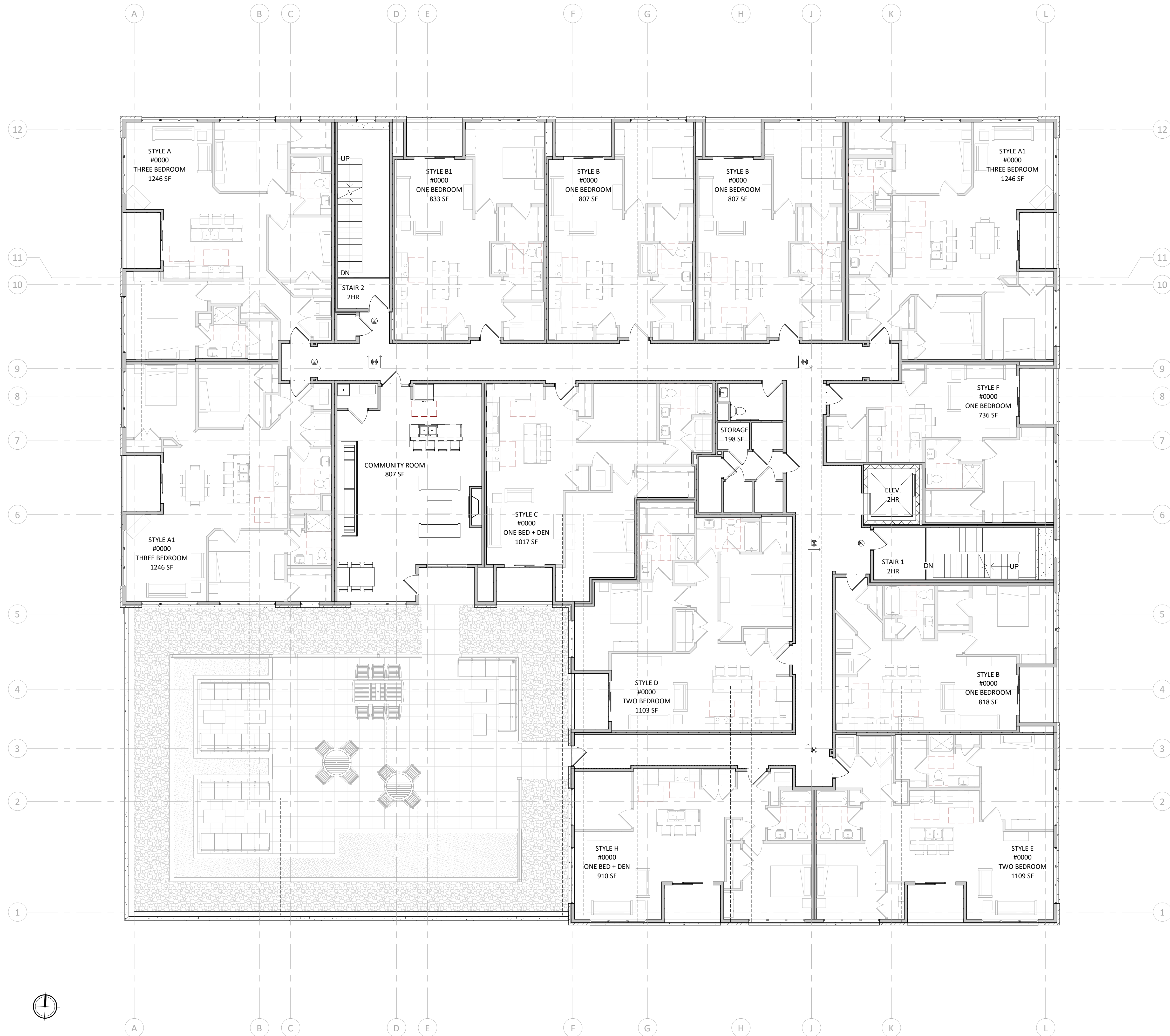
Riverside North La  
Crosse, Wisconsin  
SHEET TITLE  
**Third Floor Plan**

SHEET NUMBER

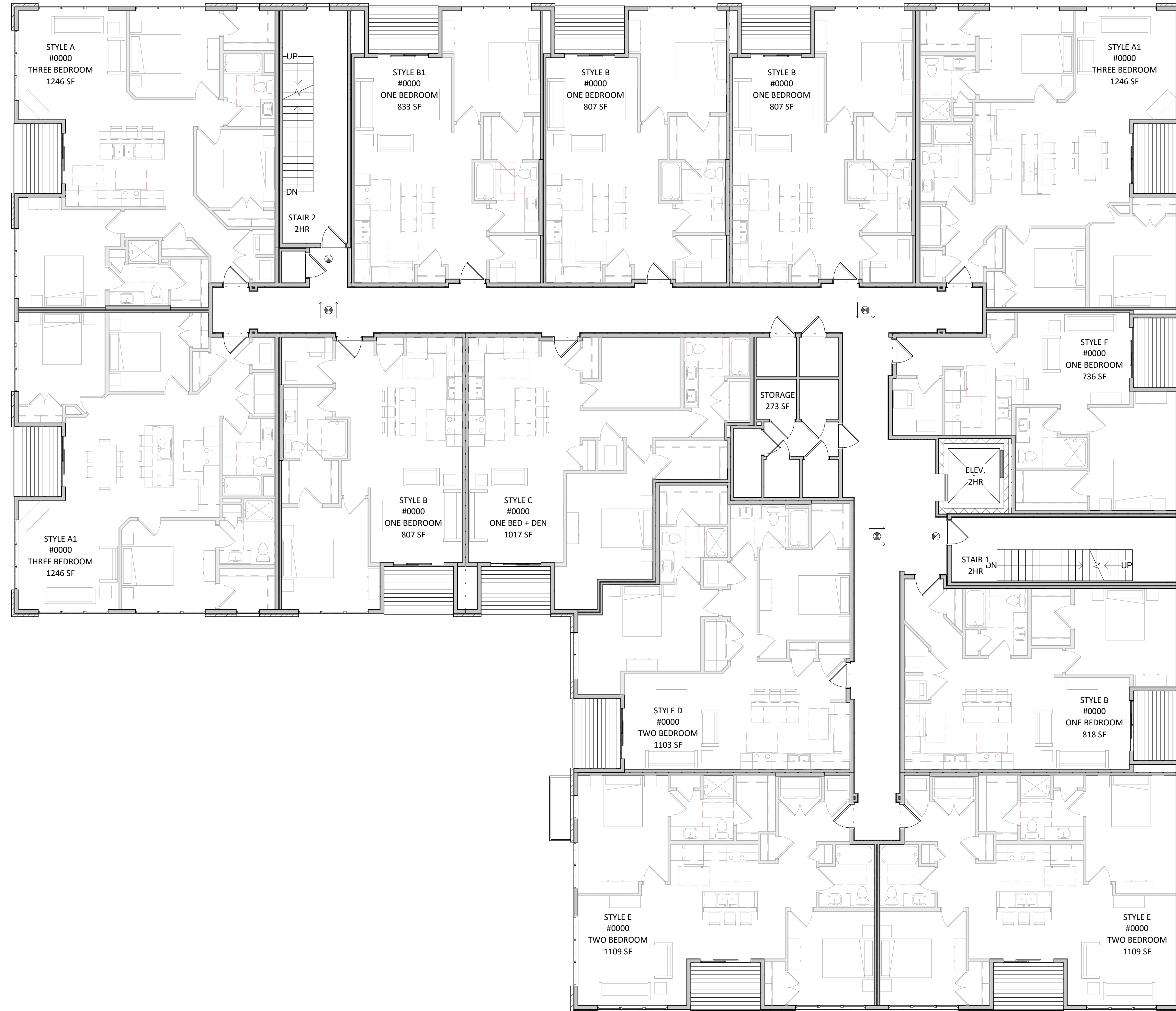
**A1.3**

PROJECT NUMBER

**2151**







ISSUED  
2024-02-09 - Progress Set  
2024-02-23 - Preliminary Design Review

PROJECT TITLE  
**RIVER POINT  
DISTRICT - K1**

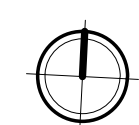
Riverside North La  
Crosse, Wisconsin  
SHEET TITLE  
**Fouth Floor Plan**

SHEET NUMBER

**A1.4**

PROJECT NUMBER

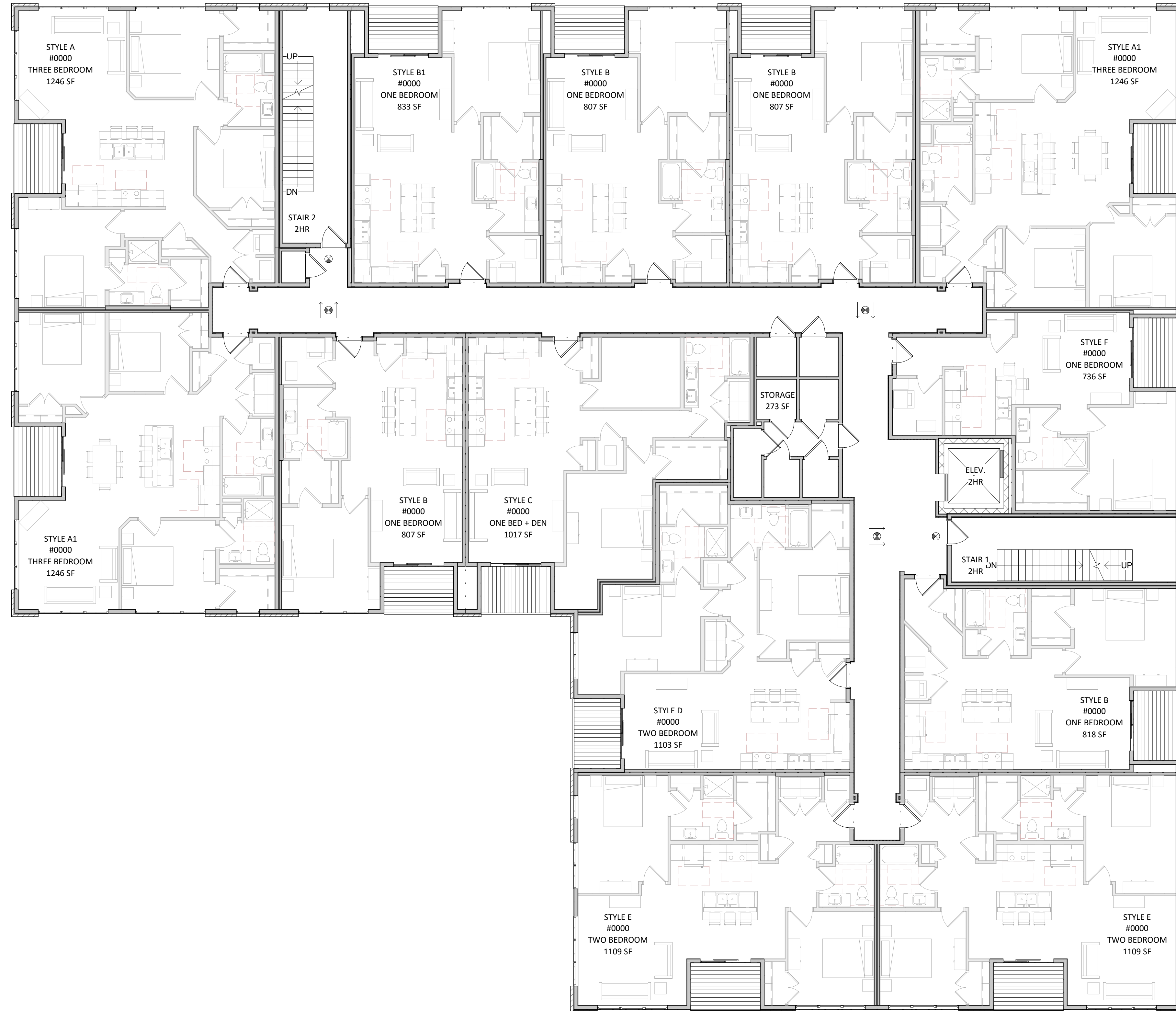
**2151**





knothe • bruce  
ARCHITECTS

Phone: 8401 Greenway Blvd., Suite 900  
608.836.3690 Middleton, WI 53562



ISSUED  
2024-02-09 - Progress Set  
2024-02-23 - Preliminary Design Review

PROJECT TITLE  
RIVER POINT  
DISTRICT - K1

Riverside North La  
Crosse, Wisconsin  
SHEET TITLE  
Fifth Floor Plan

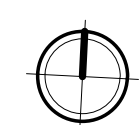
SHEET NUMBER

A1.5

PROJECT NUMBER

2151

© Knothe & Bruce Architects, LLC



1 CITY - 05 - FIFTH FLOOR  
A1.5 1/8" = 1'-0"



knothe • bruce  
ARCHITECTS

Phone: 608.836.3690 8401 Greenway Blvd., Suite 900  
Middleton, WI 53562



ISSUED  
2024-02-09 - Progress Set  
2024-02-23 - Preliminary Design Review

PROJECT TITLE  
**RIVER POINT  
DISTRICT - K1**

Riverside North La  
Crosse, Wisconsin  
SHEET TITLE  
**Sixth Floor Plan**

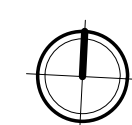
SHEET NUMBER

**A1.6**

PROJECT NUMBER

**2151**

© Knothe & Bruce Architects, LLC



1 CITY - 06 - SIXTH FLOOR  
A1.6 1/8" = 1'-0"





knothe • bruce  
ARCHITECTS

Phone: 8401 Greenway Blvd., Suite 900  
608.836.3690 Middleton, WI 53562

ISSUED  
2024-02-09 - Progress Set  
2024-02-23 - Preliminary Design Review

PROJECT TITLE  
RIVER POINT  
DISTRICT - K1

Riverside North La  
Crosse, Wisconsin  
SHEET TITLE  
Roof Plan

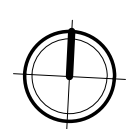
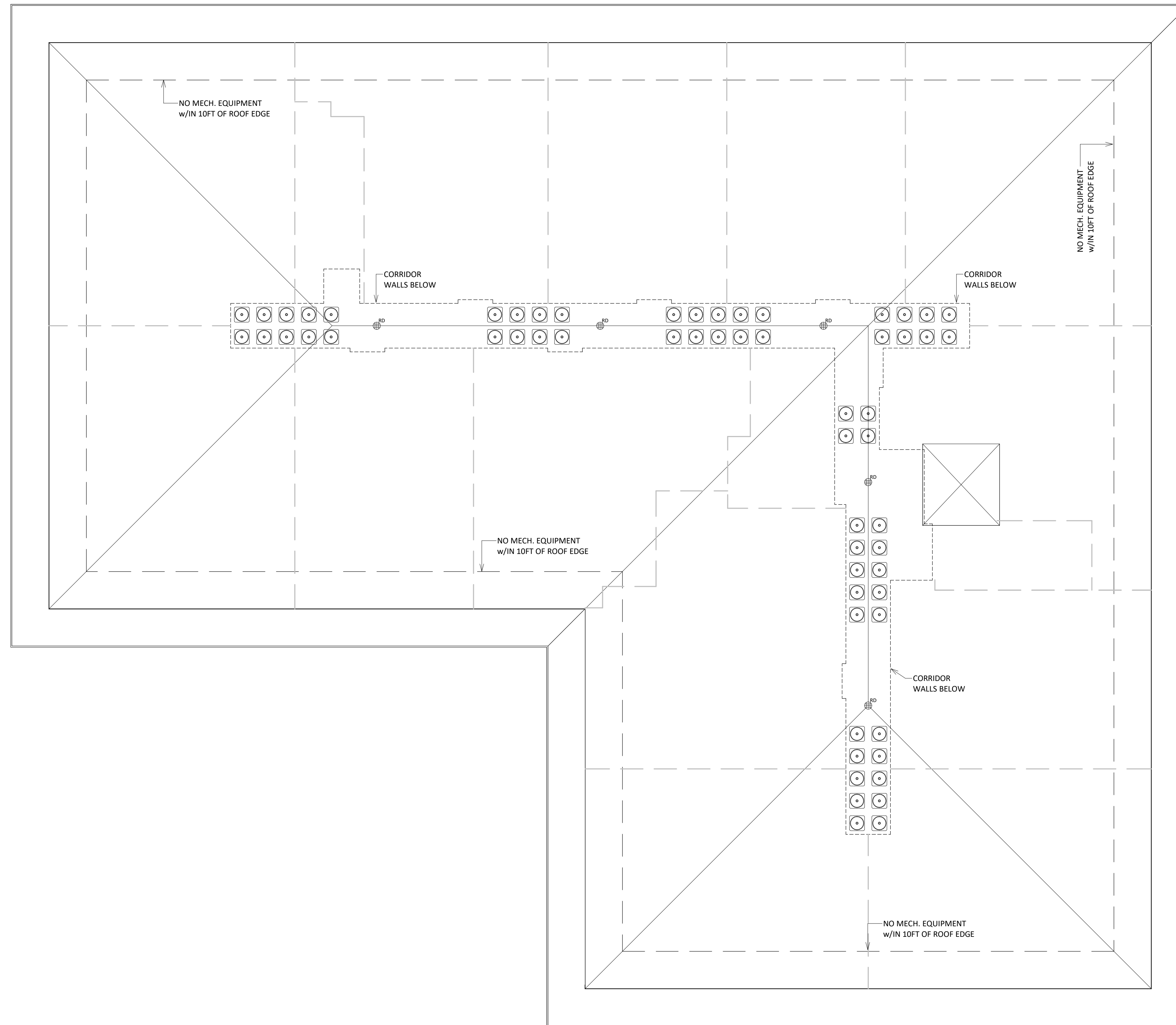
SHEET NUMBER

**A1.7**

PROJECT NUMBER

**2151**

© Knothe & Bruce Architects, LLC



1 CITY - 07 - ROOF PLAN  
A1.7 1/8" = 1'-0"





1 CITY - ELEVATION - NORTH  
A2.1 1/8" = 1'-0"

ISSUED  
2024-02-09 - Progress Set  
2024-02-23 - Preliminary Design Review

PROJECT TITLE  
**RIVER POINT  
DISTRICT - K1**

EXTERIOR MATERIAL SCHEDULE	
MARK	BUILDING ELEMENT
1	6" COMPOSITE SIDING
2	COMPOSITE PANEL
3	4" COMPOSITE SIDING
4	BRICK VENEER
5	CAST STONE VENEER
6	CAST STONE BANDS & SILLS
7	COMPOSITE WINDOWS
8	ALUM. STOREFRONT
9	INSULATED METAL DOORS/ FRAMES
10	RAILINGS & HANDRAILS
11	CANOPIES & SOFFITS
12	CANOPY SUPPORT CABLES

Riverside North La  
Crosse, Wisconsin  
SHEET TITLE  
**Exterior  
Elevations**

SHEET NUMBER  
**A2.1**  
PROJECT NUMBER  
**2151**





1 CITY - ELEVATION - SOUTH  
A2.2 1/8" = 1'-0"

ISSUED  
2024-02-09 - Progress Set  
2024-02-23 - Preliminary Design Review

PROJECT TITLE  
**RIVER POINT  
DISTRICT - K1**

EXTERIOR MATERIAL SCHEDULE	
MARK	BUILDING ELEMENT
1	6" COMPOSITE SIDING
2	COMPOSITE PANEL
3	4" COMPOSITE SIDING
4	BRICK VENEER
5	CAST STONE VENEER
6	CAST STONE BANDS & SILLS
7	COMPOSITE WINDOWS
8	ALUM. STOREFRONT
9	INSULATED METAL DOORS/ FRAMES
10	RAILINGS & HANDRAILS
11	CANOPIES & SOFFITS
12	CANOPY SUPPORT CABLES

Riverside North La  
Crosse, Wisconsin  
SHEET TITLE  
**Exterior  
Elevations**

SHEET NUMBER

**A2.2**

PROJECT NUMBER

**2151**





1 CITY - ELEVATION - EAST  
 A2.3 1/8" = 1'-0"

ISSUED  
 2024-02-09 - Progress Set  
 2024-02-23 - Preliminary Design Review

PROJECT TITLE  
**RIVER POINT  
 DISTRICT - K1**

EXTERIOR MATERIAL SCHEDULE	
MARK	BUILDING ELEMENT
1	6" COMPOSITE SIDING
2	COMPOSITE PANEL
3	4" COMPOSITE SIDING
4	BRICK VENEER
5	CAST STONE VENEER
6	CAST STONE BANDS & SILLS
7	COMPOSITE WINDOWS
8	ALUM. STOREFRONT
9	INSULATED METAL DOORS/ FRAMES
10	RAILINGS & HANDRAILS
11	CANOPIES & SOFFITS
12	CANOPY SUPPORT CABLES

Riverside North La  
 Crosse, Wisconsin  
 SHEET TITLE  
**Exterior  
 Elevations**

SHEET NUMBER  
**A2.3**  
 PROJECT NUMBER  
**2151**





1 CITY - ELEVATION - WEST  
A2.4 1/8" = 1'-0"

ISSUED  
2024-02-09 - Progress Set  
2024-02-23 - Preliminary Design Review

PROJECT TITLE  
**RIVER POINT  
DISTRICT - K1**

EXTERIOR MATERIAL SCHEDULE	
MARK	BUILDING ELEMENT
1	6" COMPOSITE SIDING
2	COMPOSITE PANEL
3	4" COMPOSITE SIDING
4	BRICK VENEER
5	CAST STONE VENEER
6	CAST STONE BANDS & SILLS
7	COMPOSITE WINDOWS
8	ALUM. STOREFRONT
9	INSULATED METAL DOORS/ FRAMES
10	RAILINGS & HANDRAILS
11	CANOPIES & SOFFITS
12	CANOPY SUPPORT CABLES

Riverside North La  
Crosse, Wisconsin  
SHEET TITLE  
**Exterior  
Elevations**

SHEET NUMBER

**A2.4**

PROJECT NUMBER

**2151**





3 CITY - COLOR ELEVATION - EAST  
A2.5 1/16" = 1'-0"



1 CITY - COLOR ELEVATION - NORTH  
A2.5 1/16" = 1'-0"



4 CITY - COLOR ELEVATION - WEST  
A2.5 1/16" = 1'-0"



2 CITY - COLOR ELEVATION - SOUTH  
A2.5 1/16" = 1'-0"

ISSUED  
2024-02-09 - Progress Set  
2024-02-23 - Preliminary Design Review

PROJECT TITLE  
**RIVER POINT  
DISTRICT - K1**

EXTERIOR MATERIAL SCHEDULE	
MARK	BUILDING ELEMENT
1	6" COMPOSITE SIDING
2	COMPOSITE PANEL
3	4" COMPOSITE SIDING
4	BRICK VENEER
5	CAST STONE VENEER
6	CAST STONE BANDS & SILLS
7	COMPOSITE WINDOWS
8	ALUM. STOREFRONT
9	INSULATED METAL DOORS/ FRAMES
10	RAILINGS & HANDRAILS
11	CANOPIES & SOFFITS
12	CANOPY SUPPORT CABLES

Riverside North La  
Crosse, Wisconsin  
SHEET TITLE  
**Exterior  
Elevations Color**

SHEET NUMBER

**A2.5**

PROJECT NUMBER

**2151**