

PROJECT INFORMATION

PROPOSED CAR WASH FOR:
MISTER CAR WASH #2580
STATE ROAD 16 • LA CROSS, WI 54601

(130L - V1.2 - Z0)

PROFESSIONAL SEAL

PRELIMINARY DATES

APR. 19, 2024

NOT FOR CONSTRUCTION

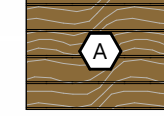
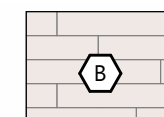


JOB NUMBER

240067400

SHEET NUMBER

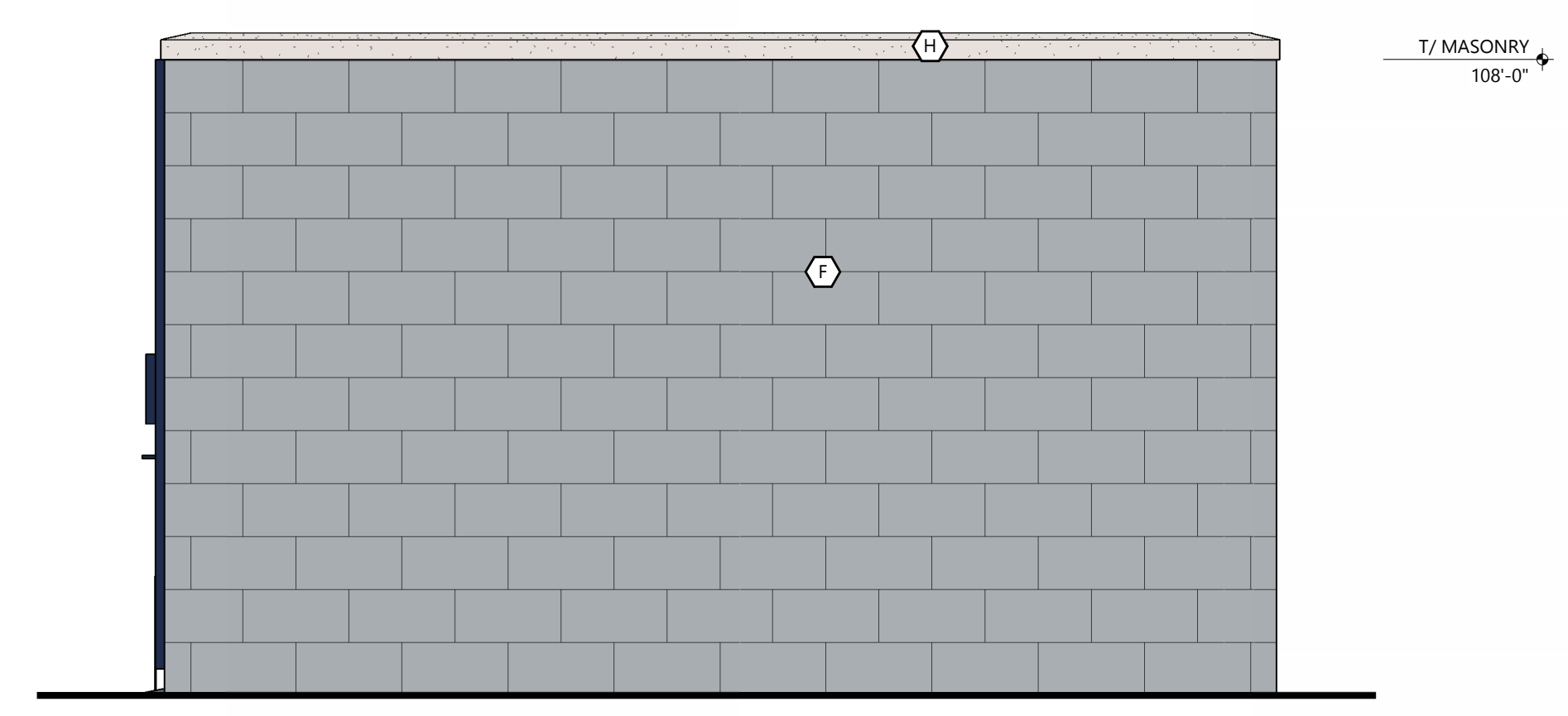
PRE-5

EXTERIOR MATERIAL KEY

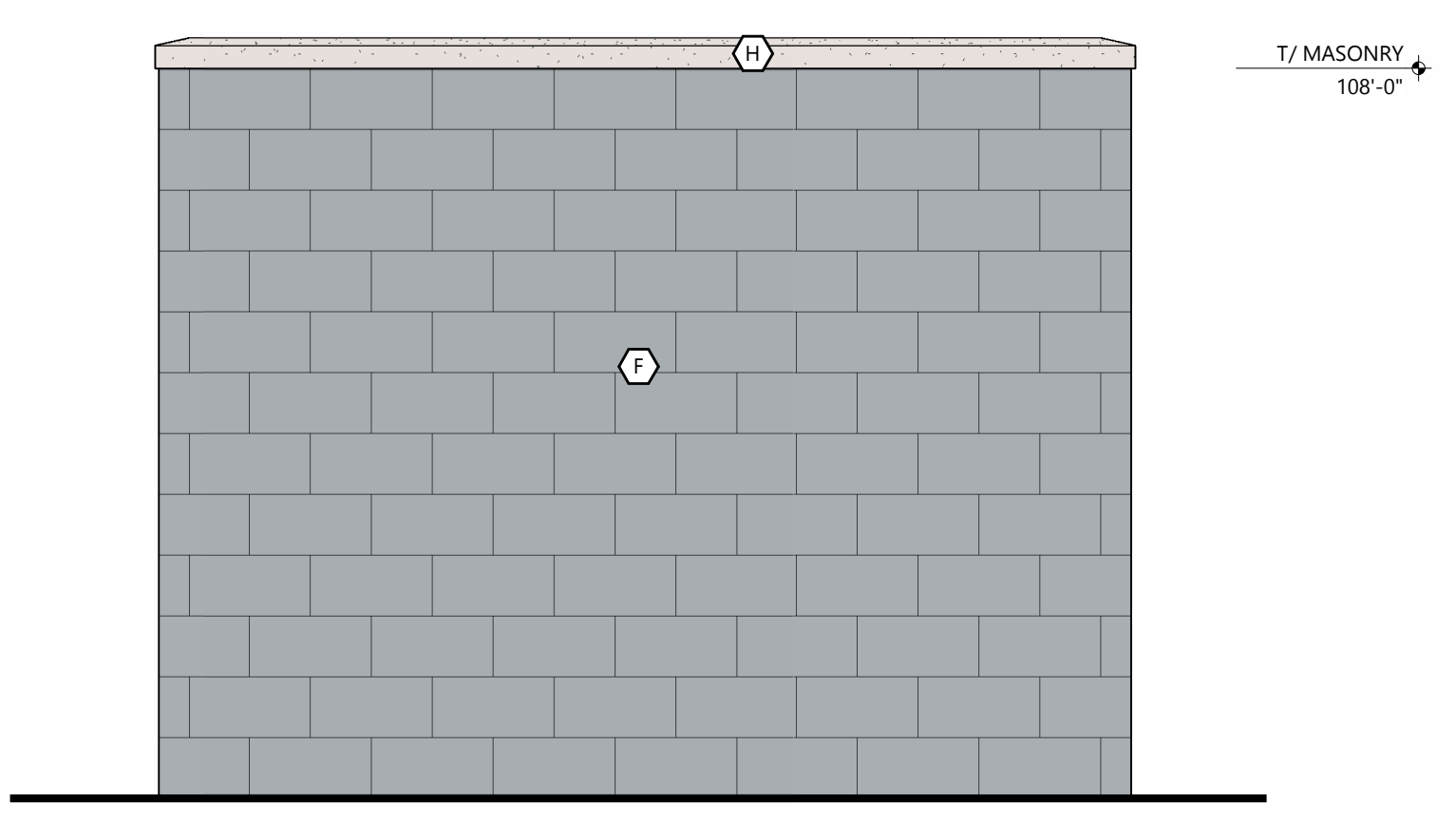
-  **PREFINISHED ALUMINUM BATTENS**
MFR: LUMASULT
STYLE: MOSAIC 1x6 BATTENS
COLOR: HAZELNUT BROWN
-  **STONE VENEER**
MFR: EL DORADO STONE
STYLE: VANTAGE 30 (6"H x 30"L x -1"D)
COLOR: WHITE ELM w/ MATCHING MORTAR JOINT
-  **EIFS**
TEXTURE: SAND
COLOR: PT-6 (MORNING FOG)
-  **EIFS**
TEXTURE: SAND
COLOR: PT-3 (WALL STREET)
-  **EIFS**
TEXTURE: SAND
COLOR: PT-9 (IN THE NAVY)
-  **SINGLE WYTHE CMU**
TEXTURE: SMOOTH FACE
INTEGRAL COLOR TO MATCH PT-6 (MORNING FOG)
-  **SINGLE WYTHE CMU**
TEXTURE: SPLIT FACE
INTEGRAL COLOR TO MATCH PT-3 (WALLSTREET)
-  **PRECAST STONE SILL**
COLOR: LIMESTONE
-  **PREFINISHED ALUMINUM WALL PANEL**
MFR: CTMRS (OR EQUAL)
COLOR: PT-9 (IN THE NAVY)
STYLE: R PANEL
-  **PREFINISHED STANDING SEAM METAL ROOF PANEL**
MFR: CTMRS (OR EQUAL)
STYLE: LARGE BATTEN 24 GA
COLOR: PT-9 (IN THE NAVY)
-  **PREFINISHED METAL TRIM AND ACCESSORIES**
MFR: CTMRS (OR EQUAL)
COLOR: PT-9 (IN THE NAVY)
-  **ALUMINUM STOREFRONT SYSTEM**
GLAZING: CLEAR
FRAME: CLEAR ANODIZED
-  **CONCRETE CUBE**
TEXTURE: HAND RUB
COLOR TO MATCH PT-3
-  **TBEK DECK BOARD**
COLOR TO MATCH PT-3

GENERAL NOTES

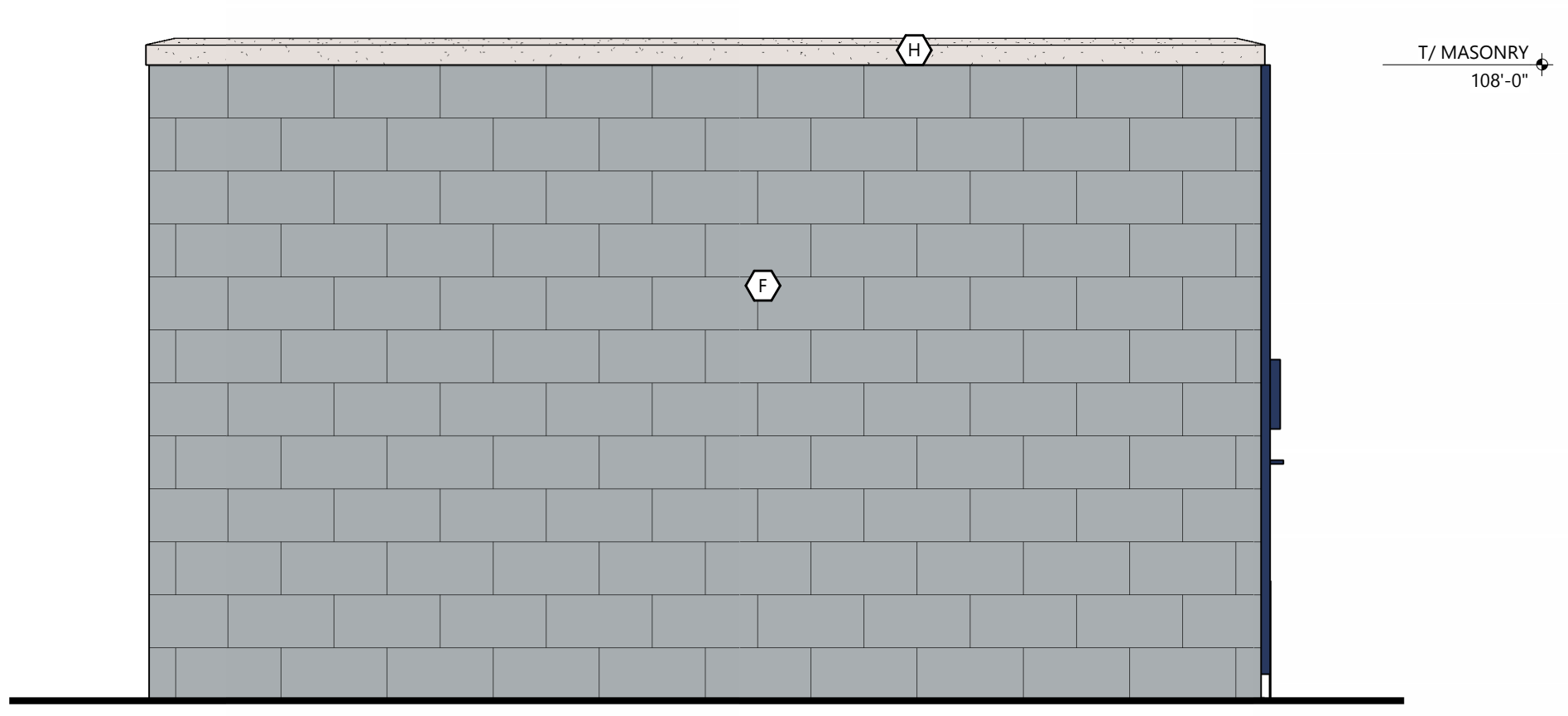
• ALL SIGNAGE SHOWN FOR INFORMATIONAL PURPOSES ONLY. ALL ADVERTISING SIGNAGE SUBJECT TO SEPARATE SIGN PERMIT SUBMITTAL AND APPROVAL.



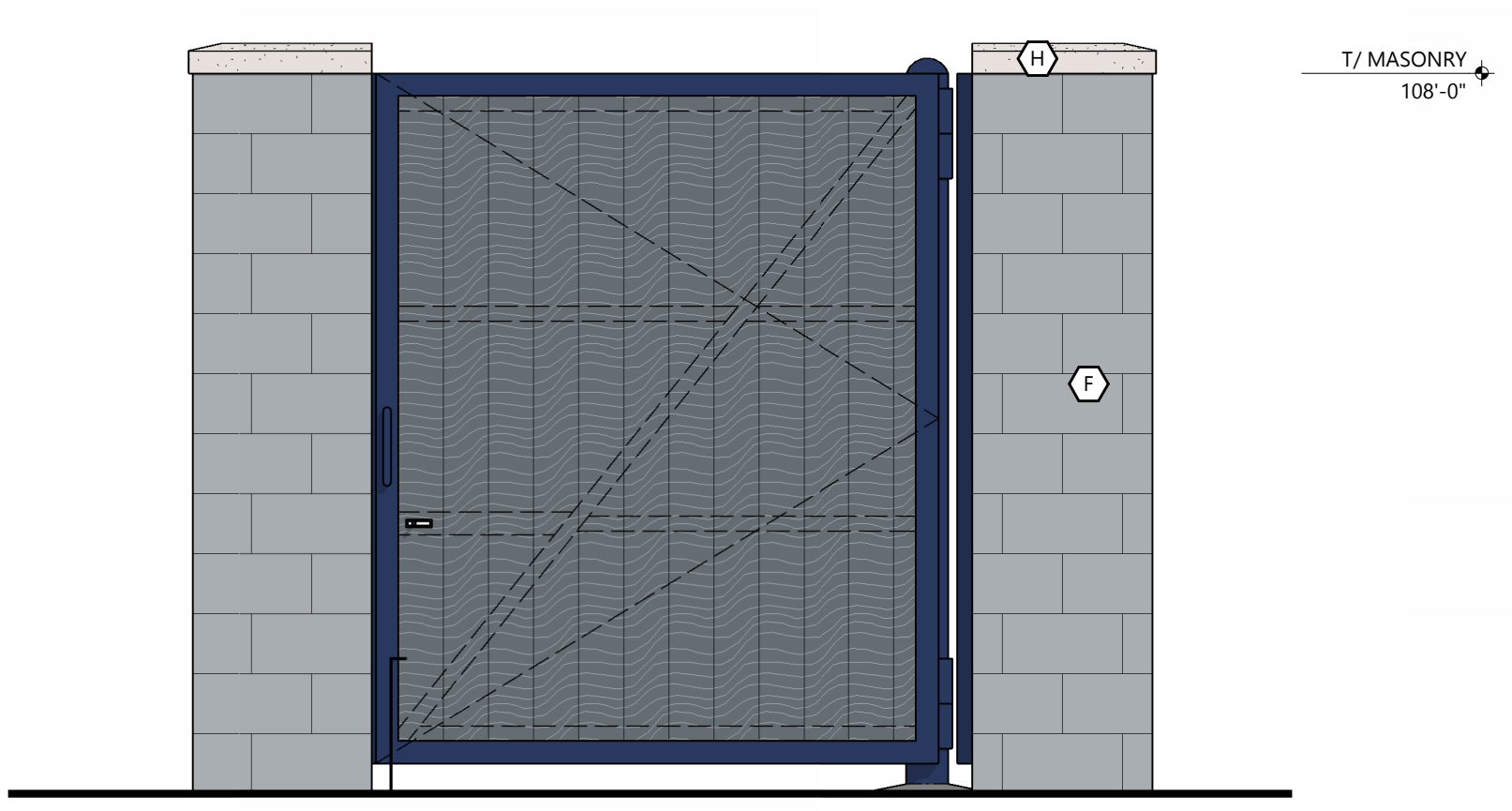
RIGHT ELEVATION
SCALE: 1/2" = 1'-0"



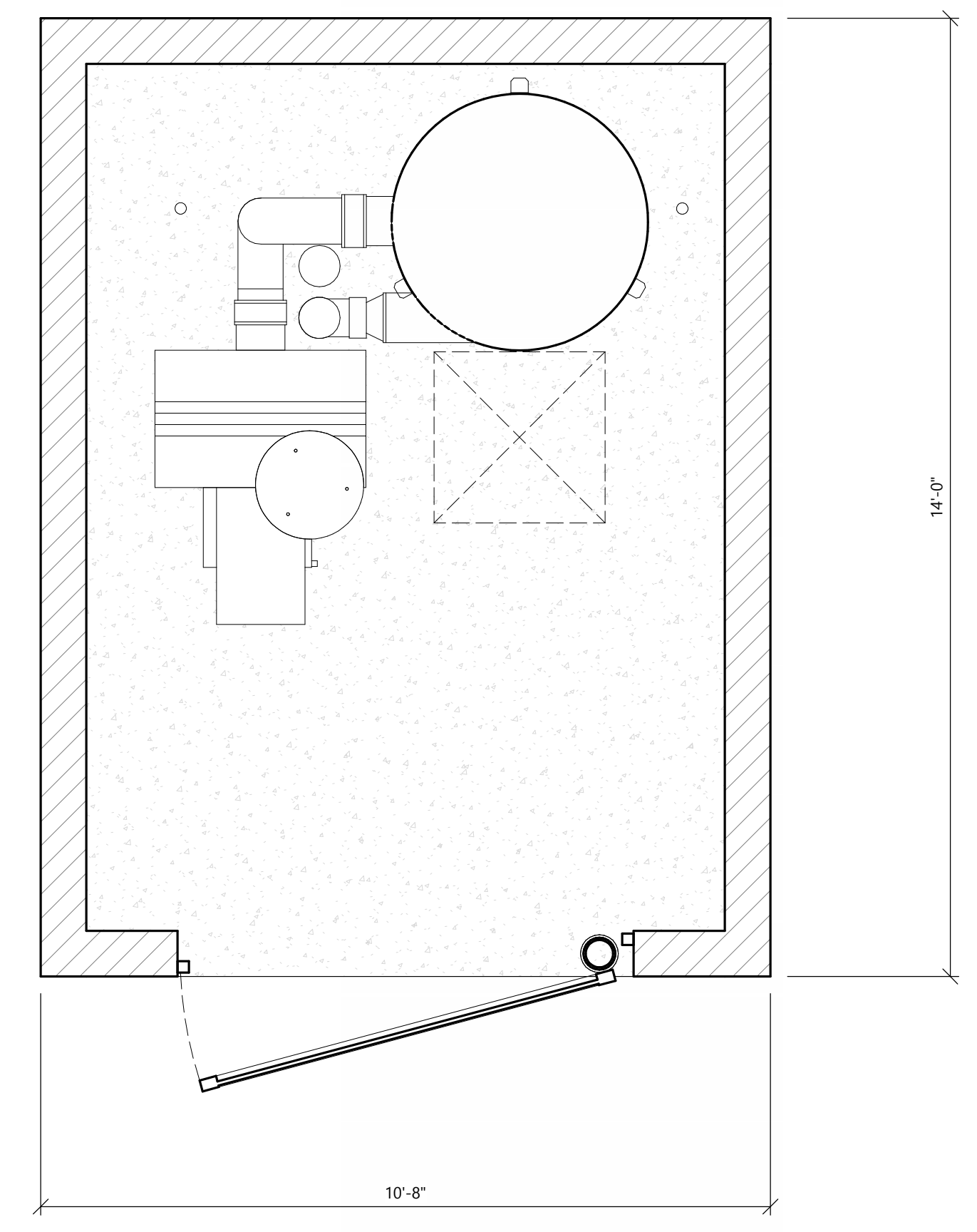
REAR ELEVATION
SCALE: 1/2" = 1'-0"



LEFT ELEVATION
SCALE: 1/2" = 1'-0"



FRONT ELEVATION
SCALE: 1/2" = 1'-0"



PLAN - VACUUM EQUIPMENT ENCLOSURE
SCALE: 1/2" = 1'-0"